

Bluetooth Keypad

User's Manual

WKP-3290M

About This Manual

This manual is designed to assist you in installing and using the Bluetooth Keypad. Information in this document has been carefully checked for accuracy; however, no guarantee is given to the correctness of the contents. The information in this document is subject to change without notice.

Edition

1st Edition,

Copyright

© Copyright 2014

This document contains proprietary information protected by copyright. All rights are reserved. No part of this manual may be reproduced by any mechanical, electronic or other means, in any form, without prior written permission of the manufacturer.

Trademarks

All trademarks and registered trademarks are the property of their respective owners.

FEDERAL COMMUNICATIONS COMMISSION STATEMENT

This Equipment has been tested and found to comply with the limits for a class B digital device, pursuant to Part 15 of the Federal Communications Commission (FCC) rules. These limits are designed to provide reasonable protection against harmful interference in a residential installation. This equipment generates, uses, and can radiate radio frequency energy and, if not installed and used in accordance with the instructions, may cause harmful interference to radio communications. However, there is no guarantee that interference will not occur in a particular installation. If this equipment does cause harmful interference to radio or television reception, which can be determined by turning the equipment off and on, the user is encouraged to try to correct the interference by one or more of the following measures:

- ◆ Reorient or relocate the receiving antenna.
- ◆ Increase the separation between the equipment and receiver.
- ◆ Connect the equipment into and outlet on a circuit different from that to which the receiver is connected.
- ◆ Consult the dealer or an experienced radio/TV technician for help.

This device complies with Part 15 of the FCC rules. Operation is subject to the following two conditions: (1) this device may not cause harmful interference, and (2) this device must accept any interference that may cause undesired operation.

15.21

You are cautioned that changes or modifications not expressly approved by the part responsible for compliance could void the user's authority to operate the equipment.

15.105(b)

This equipment has been tested and found to comply with the limits for a Class B digital device, pursuant to part 15 of the FCC rules. These limits are designed to provide reasonable protection against harmful interference in a residential installation. This equipment generates uses and can radiate radio frequency energy and, if not installed and used in accordance with the instructions, may cause harmful interference to radio communications. However, there is no guarantee that interference will not occur in a particular installation. If this equipment does cause harmful interference to radio or television reception, which can be determined by turning the equipment off and on, the user is encouraged to try to correct the interference by one or more of the following measures:

- Reorient or relocate the receiving antenna.
- Increase the separation between the equipment and receiver.
- Connect the equipment into an outlet on a circuit different from that to which the receiver is connected.
- Consult the dealer or an experienced radio/TV technician for help.

Operation is subject to the following two conditions:

- 1) this device may not cause interference and
- 2) this device must accept any interference, including interference that may cause undesired operation of the device.

Caution:

RISK OF EXPLOSION IF BATTERY IS REPLACED BY AN INCORRECT TYPE.

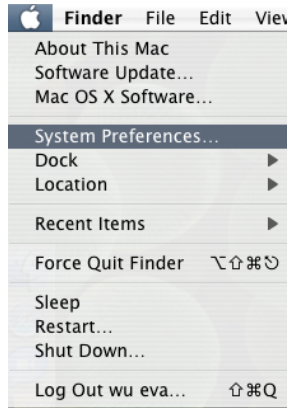
DISPOSE OF USED BATTERIES ACCORDING TO THE INSTRUCTIONS.

System Requirements

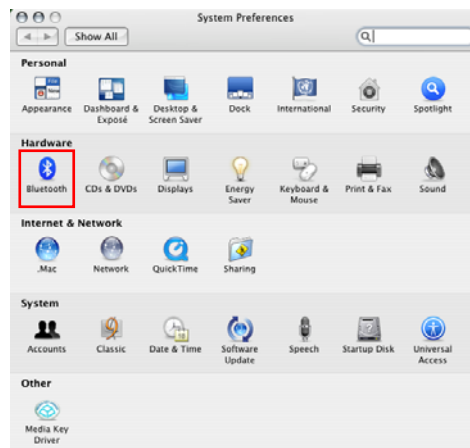
- MAC OS X.
- Build-in Bluetooth module or Bluetooth dongle.

Device pairing

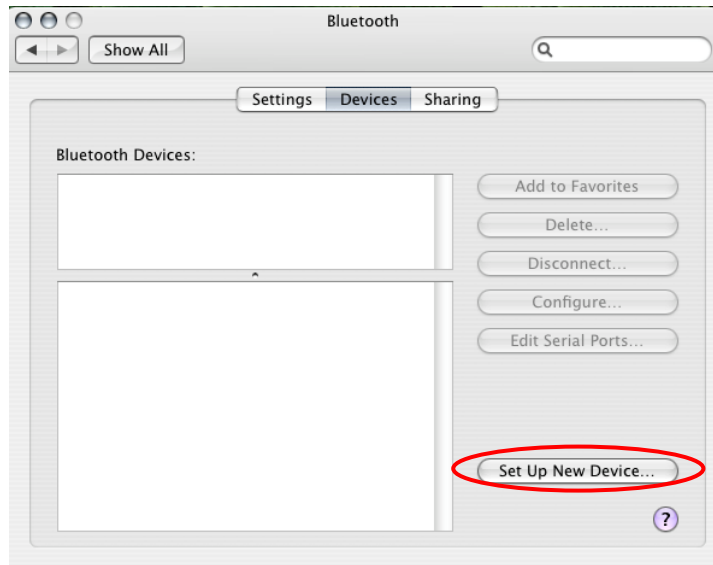
1. Click on the Apple icon and choose “System Preferences”



2. Click on the Bluetooth option.



3. Click the “Set Up New Device” .



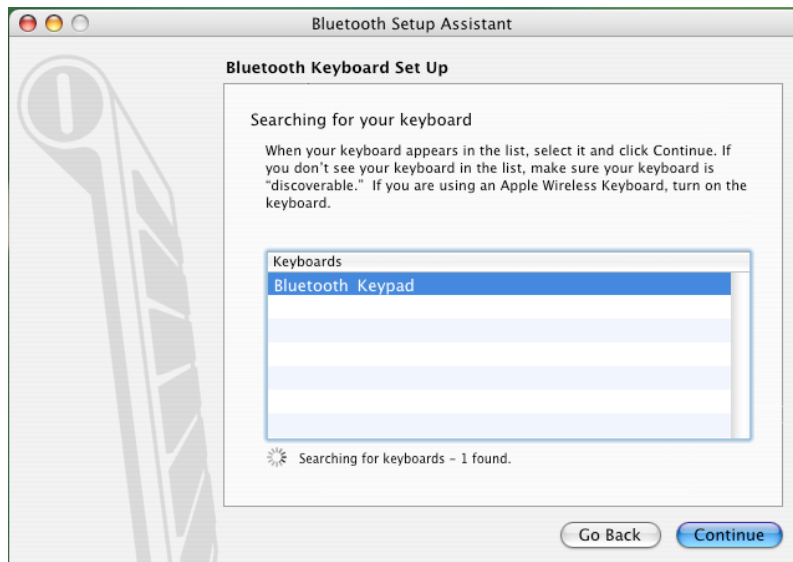
4. Click the “Continue” button.



5. Press the CONN button at back of the Bluetooth keypad, then the led will start flashing. Choose “Keyboard” and click the “Continue” button.



6. Choose “Bluetooth Keypad” and click the “Continue” button.



7. Just follow the screen display to input the Passkey then press “enter”
(the keypad enter)



8. Click the “Quit” button. The Bluetooth keypad is ready to use.



Power Switch

There is a power switch at back of the keypad. When not in use, please turn to OFF to save battery power.

Note:

- 1. After 30 minutes non-operation, the keypad will go to low-power mode. Please press any key to wake up and wait the blue LED turn off before using.**
- 2. Power ON/OFF also need to press any key to reconnect and wait the blue LED turn off before using.**
- 3. CAUTION : RISK OF EXPLOSION IF BATTERY IS REPLACED BY AN INCORRECT TYPE. DISPOSE OF USED BATTERIES ACCORDING TO THE INSTRUCTIONS**