

Bluetooth Keypad

User's Manual

About This Manual

This manual is designed to assist you in installing and using the Bluetooth Keypad. Information in this document has been carefully checked for accuracy; however, no guarantee is given to the correctness of the contents. The information in this document is subject to change without notice.

Edition

1st Edition,

Copyright

© Copyright 2007

This document contains proprietary information protected by copyright. All rights are reserved. No part of this manual may be reproduced by any mechanical, electronic or other means, in any form, without prior written permission of the manufacturer.

Trademarks

All trademarks and registered trademarks are the property of their respective owners.

Federal Communications Commission (FCC) Statement

15.21

You are cautioned that changes or modifications not expressly approved by the part responsible for compliance could void the user's authority to operate the equipment.

15.105(b)

This equipment has been tested and found to comply with the limits for a Class B digital device, pursuant to part 15 of the FCC rules. These limits are designed to provide reasonable protection against harmful interference in a residential installation. This equipment generates, uses and can radiate radio frequency energy and, if not installed and used in accordance with the instructions, may cause harmful interference to radio communications. However, there is no guarantee that interference will not occur in a particular installation. If this equipment does cause harmful interference to radio or television reception, which can be determined by turning the equipment off and on, the user is encouraged to try to correct the interference by one or more of the following measures:

- Reorient or relocate the receiving antenna.
- Increase the separation between the equipment and receiver.
- Connect the equipment into an outlet on a circuit different from that to which the receiver is connected.**
- Consult the dealer or an experienced radio/TV technician for help.

Operation is subject to the following two conditions:

- 1) this device may not cause interference and
- 2) this device must accept any interference, including interference that may cause undesired operation of the device.

FCC RF Radiation Exposure Statement:

This equipment complies with FCC radiation exposure limits set forth for an uncontrolled environment. End users must follow the specific operating instructions for satisfying RF exposure compliance. This transmitter must not be co-located or operating in conjunction with any other antenna or transmitter.

System Requirements

- Microsoft® Windows® 98/Me/2000/XP/Vista compatible
- Build-in Bluetooth module or Bluetooth dongle.

Device pairing

Widcomm software:

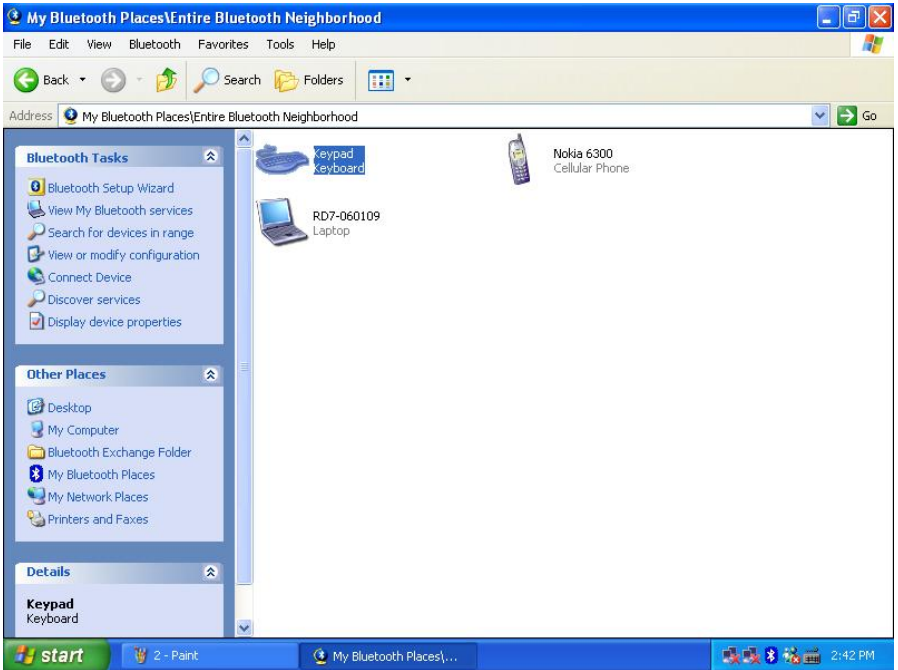
1. Right click on the BT icon and choose “Explore My Bluetooth Places”



2. Press the ID button at back of the Bluetooth keypad, then the led will start flashing.




3. Click the “Search for devices in range” option, the “keypad” will be found.



4. Double click on the “Keypad” icon, it will pop-up another windows. Just follow the screen display to input the Pin Code then press “enter” (the keypads enter).



5. The Found New Hardware Wizard appears and the OS will install the driver automatically. No other steps are necessary.
6. The Bluetooth icon will become to . The Bluetooth keypad is ready to use.

Toshiba software:

1. Right click on the BT icon and choose “Add New Connection”



2. Press the ID button at back of the Bluetooth keypad, then the led will start flashing.



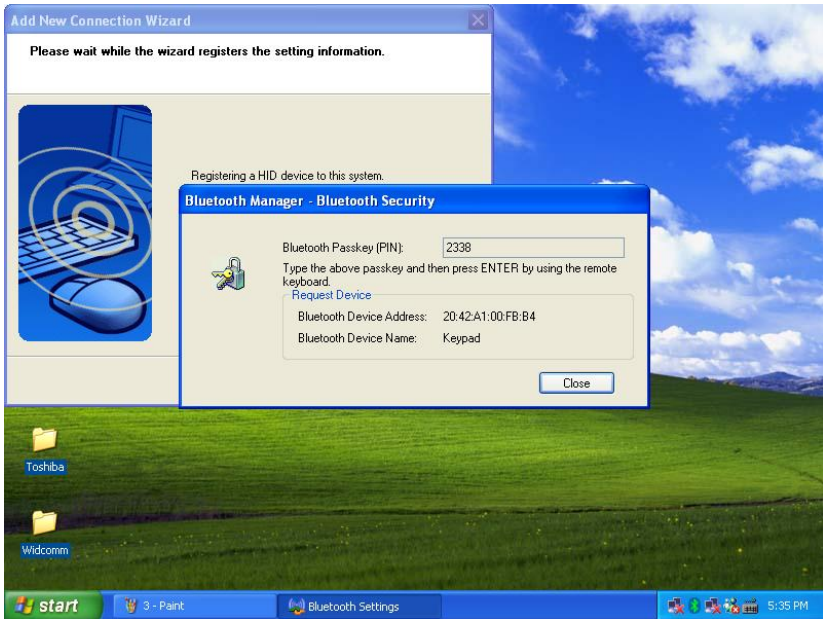
3. Click “Next”



4. Choose the “Keypad” device and click “Next”




5. Just follow the screen display to input the Pin Code then press “enter” (the keypads enter).



6. Click “Next”



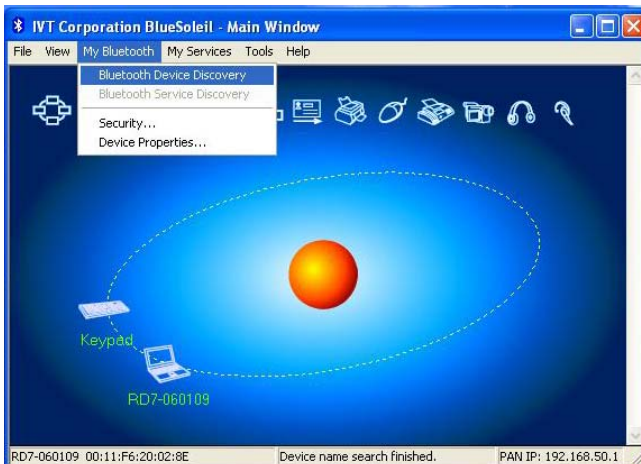
7. The Found New Hardware Wizard appears and the OS will install the driver automatically. No other steps are necessary.
8. The Bluetooth icon will become to . The Bluetooth keypad is ready to use.

IVT Software:

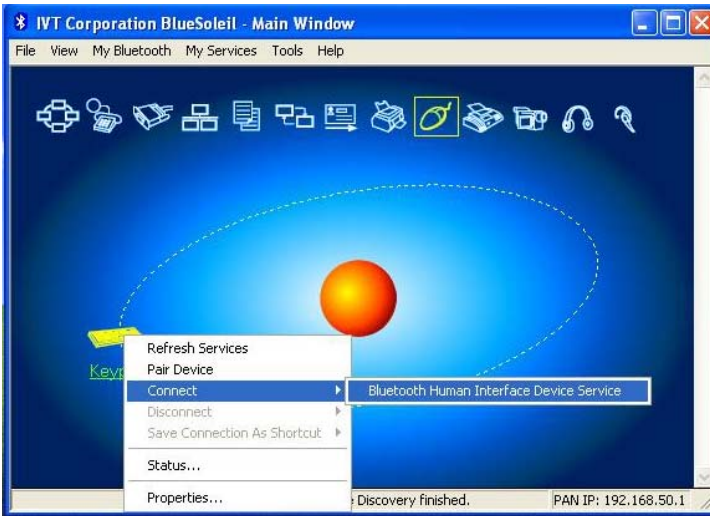
1. Press the ID button at back of the Bluetooth keypad, then the led will start flashing.



2. Double click the BT icon on the system tray and it will pop-up a windows. Choose “My Bluetooth” → ” Bluetooth Device Discovery”




- It will find the “Keypad” device. Right click on the keypad icon and choose “Connect” → “Bluetooth Human Interface Device Service”



- Just follow the screen display to input the Passkey then press “enter” (the keypads enter).



5. The Found New Hardware Wizard appears and the OS will install the driver automatically. No other steps are necessary.
6. The Bluetooth icon will become to . The Bluetooth keypad is ready to use.

Key function

Calculator mode

Key Functions	Definition
M+	Adds the current display from the content of memory.
M-	Subtracts the current display from the content of memory.
MRC	i. First push, as MR key, transfers the contents of the memory register into the display register. ii. Second push, as MC key, clears the memory.
TAB	Calculator mode: Specifies the number of decimal places for rounding.
+/-	Switches the sign of the displayed value between positive (+) and negative (-).
%	Use this key in combination with arithmetic operator keys to perform percent
MODE	Change mode between the calculator and the keypad status.
SEND	Send the calculation result to PC when the device is in calculator mode or in keypad mode.

Keypad mode:

Function Name	Function Description
+	Numlock ON: Input “+” symbol
	Numlock OFF: Input “=” symbol
—	Input “—” symbol
*	Input “*” symbol
/	Input “/” symbol
BK SP ←	AS the keyboard BackSpace function
• Del	Numlock ON: Input “ • ” symbol
	Numlock OFF: As the keyboard “del” function.
00 ,	Numlock ON: Input “00” symbol
	Numlock OFF: Input “ , ” symbol
Pre-track	Switches to the previous media track. Press once for each preceding media track.
Next-track	Switches to the next media track. Press once for each preceding media track.
V-	Decreases the computer’s sound volume. Turn left to decrease volume.
Mute	Mutes the computer’s sound volume. Press it again to turn the system volume back on.
V+	Increases the computer’s sound volume. Turn right to increase volume.

Stop	Stops playing the media.
Play/pause	Once Pause is pressed, pressing this button again resumes play.
Calculator	Starts Microsoft Calculator

About the Display

The display shows the number you input, calculation results, and various indicators showing the status of the calculator.

-MINUS	Negative value indicator
MEMORY	Independent memory indicator
ERROR	Error indicator
'	3-digit separator (apostrophe)
CALC	Indicate you are in calculator status
KEYPAD	Indicate you are in keypad status
GT	Grant total

Rounding Selector & Decimal Place Selector

➤ Press TAB To Rounding Selector

Specified the rounding system

F	Floating decimal point system, which displays the value without rounding.
0,2,4	Number of decimal places for the 5/4 setting of the Rounding Selector.
A	The "Add Mode" automatically adds a decimal point and two decimal places to all values, even if you don't input a decimal point. This mode is very useful when performing calculations in dollars or other monetary systems that require two decimal places. Two decimal places are not added in this mode if you press the DEL key while inputting a value, or for any operation other than addition and subtraction.