

Bluetooth Keyboard

User's Manual



Version 1.0 2011/01

ID NO:

About This Manual

This manual is designed to assist you in installing and using the Bluetooth Keyboard Information in this document has been carefully checked for accuracy; however, no guarantee is given to the correctness of the contents. The information in this document is subject to change without notice.

Edition

1st Edition,

Copyright

© Copyright 2010

This document contains proprietary information protected by copyright. All rights are reserved. No part of this manual may be reproduced by any mechanical, electronic or other means, in any form, without prior written permission of the manufacturer.

Trademarks

All trademarks and registered trademarks are the property of their respective owners.

FEDERAL COMMUNICATIONS COMMISSION STATEMENT

You are cautioned that changes or modifications not expressly approved by the part responsible for compliance could void the user's authority to operate the equipment.

This Equipment has been tested and found to comply with the limits for a class B digital device, pursuant to Part 15 of the Federal Communications Commission (FCC) rules. These limits are designed to provide reasonable protection against harmful interference in a residential installation. This equipment generates, uses, and can radiate radio frequency energy and, if not installed and used in accordance with the instructions, may cause harmful interference to radio communications. However, there is no guarantee that interference will not occur in a particular installation. If this equipment does cause harmful interference to radio or television reception, which can be determined by turning the equipment off and on, the user is encouraged to try to correct the interference by one or more of the following measures:

- ◆ Reorient or relocate the receiving antenna.
- ◆ Increase the separation between the equipment and receiver.
- ◆ Connect the equipment into and outlet on a circuit different from that to which the receiver is connected.
- ◆ Consult the dealer or an experienced radio/TV technician for help.

Operation is subject to the following two conditions:

- 1) this device may not cause interference and
- 2) this device must accept any interference, including interference that may cause undesired operation of the device.

FCC RF Radiation Exposure Statement:







This equipment complies with FCC radiation exposure limits set forth for an uncontrolled environment. End users must follow the specific operating instructions for satisfying RF exposure compliance. This transmitter must not be co-located or operating in conjunction with any other antenna or transmitter.

System Requirements

- Microsoft® Windows® XP with MCE/Vista/7 compatible
- Build-in Bluetooth module or Bluetooth dongle.

Hot key function:

- **Multimedia Buttons:** Volume down, Volume up, Mute, Pre track, Next track, Play/Pause,.

	Play/Pause	Switches between Play and Pause of DVD/VCD/MP3/Audio media. Once Pause is pressed, pressing this button again resumes play.
	V-	Decreases the computer's sound volume. Hold down to decrease volume more quickly.
	V+	Increases the computer's sound volume. Hold down to increase volume more quickly.
	Mute	Mutes the computer's sound volume. Press it again to turn the system volume back on.
	Next track	Switches to the next media track. Press once for each subsequent media track.
	Pre-track	Switches to the previous media track. Press once for each preceding media track.

Device pairing

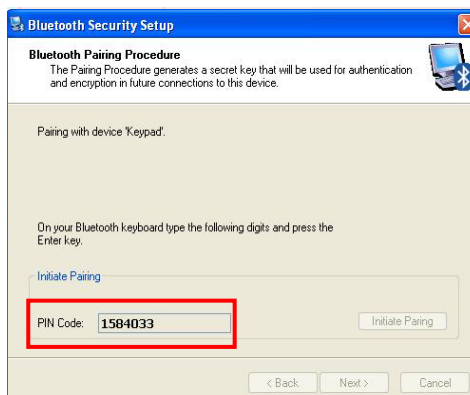
Widcomm software:

1. Right click on the BT icon and choose “Explore My Bluetooth Places”



2. Press the ID button at back of the Bluetooth Mine Keyboard, then the led will start flashing.
3. Click the “Search for devices in range” option, the “Bluetooth Keyboard” will be found.

Double click on the “Bluetooth Keyboard” icon, it will pop-up another windows. Just follow the screen display to input the Pin Code then press “enter”.



4. The Found New Hardware Wizard appears and the OS will install the driver automatically. No other steps are necessary.
5. The Bluetooth icon will become to . The Bluetooth Mini Keyboard is ready to use.

Toshiba software:

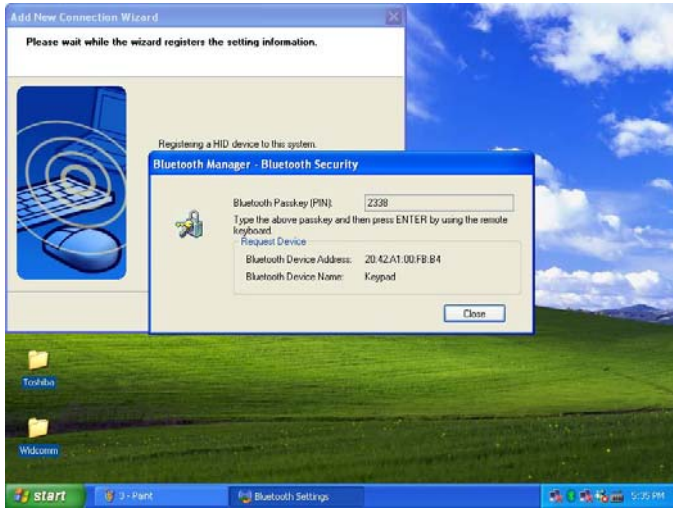
1. Right click on the BT icon and choose “Add New Connection”



2. Press the ID button at back of the Bluetooth Mini Keyboard, then the led will start flashing.
3. Click “Next”



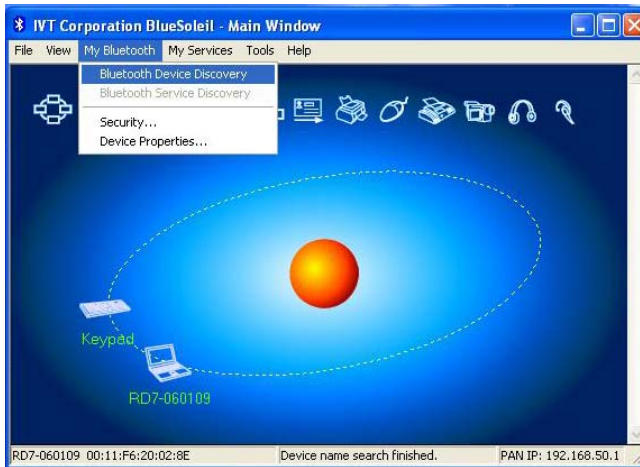
4. Choose the “Bluetooth Keyboard” device and click “Next”
5. Just follow the screen display to input the Pin Code then press “enter”




6. The Found New Hardware Wizard appears and the OS will install the driver automatically. No other steps are necessary.
7. The Bluetooth icon will become to  . The Bluetooth Mini Keyboard is ready to use.

IVT Software:

1. Press the ID button at back of the Bluetooth Mini Keyboard, then the led will start flashing.
2. Double click the BT icon on the system tray and it will pop-up a windows. Choose “My Bluetooth” → ” Bluetooth Device Discovery”



3. It will find the “Bluetooth Keyboard” device. Right click on the Keyboard icon and choose “Connect” → “Bluetooth Human Interface Device Service”
4. Just follow the screen display to input the Passkey then press “enter”
5. The Found New Hardware Wizard appears and the OS will install the driver automatically. No other steps are necessary.
6. The Bluetooth icon will become to . The Bluetooth Mini Keyboard is ready to use.

Troubleshooting

➤ Wireless Product Does Not Work

- Make sure you have installed the batteries correctly. Check to make sure the batteries you have installed are not dead. Try the batteries in another device.

➤ **RF Distance Does Not Reach 10M**

It is possible that computer monitor (or a large metal object) may be interfering with the receiver's radio reception. Also, the batteries may be low. Check the batteries status. You may also need to re-establish the connection between the keyboard and receiver.