

VUP-7240 & VUP-7240RX

Wireless VoIP USB Phone & Wireless VoIP USB Phone Receiver

User's Manual



Version 1.0 2006/02

ID NO: FAO-82265123-00

Federal Communications Commission (FCC) Statement

15.21

You are cautioned that changes or modifications not expressly approved by the part responsible for compliance could void the user's authority to operate the equipment.

15.105(b)

This equipment has been tested and found to comply with the limits for a Class B digital device, pursuant to part 15 of the FCC rules. These limits are designed to provide reasonable protection against harmful interference in a residential installation. This equipment generates, uses and can radiate radio frequency energy and, if not installed and used in accordance with the instructions, may cause harmful interference to radio communications. However, there is no guarantee that interference will not occur in a particular installation. If this equipment does cause harmful interference to radio or television reception, which can be determined by turning the equipment off and on, the user is encouraged to try to correct the interference by one or more of the following measures:

- Reorient or relocate the receiving antenna.
- Increase the separation between the equipment and receiver.
- Connect the equipment into an outlet on a circuit different from that to which the receiver is connected.
- Consult the dealer or an experienced radio/TV technician for help.

Operation is subject to the following two conditions:

- 1) this device may not cause interference and
- 2) this device must accept any interference, including interference that may cause undesired operation of the device.

FCC Caution: Any changes or modifications not expressly approved by the party responsible for compliance could void the user's authority to operate this equipment. "ORtek Technology, Inc. declare that

IMPORTANT NOTE:

FCC Radiation Exposure Statement:

This equipment complies with FCC radiation exposure limits set forth for an uncontrolled environment. To maintain compliance with FCC RF exposure compliance requirements, please avoid direct contact to the transmitting antenna during transmitting. End users must follow the specific operating instructions for satisfying RF exposure compliance.

This transmitter must not be co-located or operating in conjunction with any other antenna or transmitter.

CONTENTS

CHAPTER 1 Welcome to USB Phone

1.1	Features.....	4
1.2	System Requirements.....	5
1.3	Driver Installation.....	5
1.4	Hardware Installation.....	6

CHAPTER 2 Use of USB Phone

2.1	Run Skype.....	7
2.2	Connect USB Phone to PC.....	8
2.3	Call to regular phone (PC to Phone).....	9
2.4	Answer a call.....	9
2.5	Function Keys.....	9
2.6	Function operation.....	13
2.7	FAQ.....	13

CHAPTER 1

Welcome to Wireless USB Phone

1.1 Features

1. Echo cancellation, noise reduction
2. Full duplex communication
3. Customized hand phone casing designs available
4. Key-in tone function
5. Hold ring tone function
6. Clear and private conversation with Bluetooth technology
7. Works at full 360° efficient with Bluetooth Technology
8. Wireless freedom up to 15~20 meters
9. Talk up to 4 hours and standby up to 20 hours without recharging
10. Easy to read wide dot-matrix graphic LCD display with 128 x 32 pixels
11. Any language characters can be displayed
12. Supported application: MSN, NetMeeting, Yahoo Messenger, 100% compatible with Skype
13. Blue LED backlight for incoming call alert or press any key
14. Cellular phone size makes this model popular for travelers (48 x 128.5 x 32.4 mm)
15. Free PC to PC call or low PC to Phone call rate over the Internet
16. Convenient Volume Control Button
17. Miss calls and received calls indication
18. Multiple ringer tones choices
19. No Power/Memory/Sound Card required
20. USB port battery charger
21. USB dongle transceiver for best result

1.2 System Requirements

1. P with 200 MHz CPU or better with USB interface
2. 64MB of RAM
3. 10MB or more hard disk space
4. Operating System: Windows 2000/XP
5. Network: LAN, ADSL, ISDN, 33.6K modem or better

1.3 Driver Installation

Insert the Driver CD into your CD-ROM drive and the CD will Auto Run. If it does not, please choose (Run) from the Start Menu. The file name on the CD is "**setup**". The first screen is an introduction. Read it before proceeding to the next step. The software will automatically begin to install to your hard disk in a sub-directory titled **C:\PROGRAM FILES\Skywin**. After installation, you will be prompted to reboot your computer in order to enable the Skywin software.

After reboot, a pop-up window will display onscreen. Choose "**Allow this program to use Skype**".



Note: If there is any update driver, users just need to install the new one. The driver will auto update.

1.4 Hardware Installation

Connect the receiver to your PC, then the “Add New Hardware Wizard appears”. Just click the “Next” button, the system will install the driver automatically. No other steps are necessary.

Click any button on the phone; it will connect with your computer.

CHAPTER 2

Use of USB Phone

2.1 Run Skype

- ▣ Download Skype software and install it (www.skype.com), the version.
- ▣ Run Skype and log in with skype account.




You can create a Skype account as shown below:





After the software startup, the icon will appear to the system tray as shown below:




That indicates the Skype has successfully connected to Internet. If it hasn't connected to Internet, the icon will be shown as , now you have to check whether PC is connected to Internet successfully or not.

2.2 Connect USB Phone to PC

- Connect USB Phone to PC , the LCD shows time, and the icon on system tray will become  

2.3 Call to regular phone (PC to Phone)

- Press "011"+"country code"+"phone number", then press .

Example: call to Taiwan, Taipei, press 011886212345678, then press SEND key.

886	2	12345678
-----	-----	-----
country code	area code	destination number

Note: If you want to use this function, you should buy SkypeOut Credit first.




2.4 Answer a call

When a incoming call and USB phone is ringing, press  to



answer the call or press  to refuse the call.



2.5 Function keys



Key Location	Function Description
0~9	Keypad 0~9
#	Keypad #
*	Keypad *
∧	Volume up (This function only can work when you are talking with someone)
∨	Volume down(This function only can work when you are talking with someone)
▲	Change setting or switch option up. For example, if you choose the "RING TONE"


	option; press this button to change the ring tone.
	Change setting or switch option down. For example, if you choose the “RING TONE” option; press this button to change the ring tone.
S	Call Skype window
Info	I. To see the contact person’s information. Including mobile, office and home phone number. II. During conversation, it will become the “Hold” function.
	I. Answer the phone II. Enter the function menu III. Press 3 seconds to turn on
	I. Hang up II. Exit the function menu III. Press 3 seconds to turn off.




2.6 Function operation


Press  to enter the function menu, press  to exit . There are four options that you can choose; you can press the “left” and “right” button to choose.

Contacts: Under this option then press the  button to see your contact list. Press the “up” and “down” button to look up your contact list. If your contact person is online, the “Online” will display on LCD.
You can press the “Info” key to see the contact person’s detail information or press the  button to call.

Miss call: Under this option then press the  button to look up your miss call. Press the “up” and “down” button to look up the miss call. If not, press the  to exit this option.

Call list: Under this option then press the  button to check your call list. Press the “up” and “down” button to look up the call list.

Option: Under this option then press the  button to set your phone function. There are six options to set your phone. Press the “up” and “down” button to choose, then press the  button to enter the option. After your setting, you need to press  to

save your setting. For example, if you choose your favorite ring is 10. You need to press  to save your setting.

VOL SET:	Setting the handset volume. Press the “up” button to increase the volume; press the “down” button to decrease the volume. The max volume is level 7.
RING VOL:	Setting the ring volume. Press the “up” button to increase the volume; press the “down” button to decrease the volume.
ENTEEREG:	For RF pairing use.
KEY TONE:	Setting the key tone ON or OFF.
RING SET:	Setting the ring tone (11 options). Press the “up” and “down” button to choose your favorite ring tone.
HOLD SET:	Setting the hold ring (5 options+ Mute). Press the “up” and “down” button to choose your favorite hold ring.

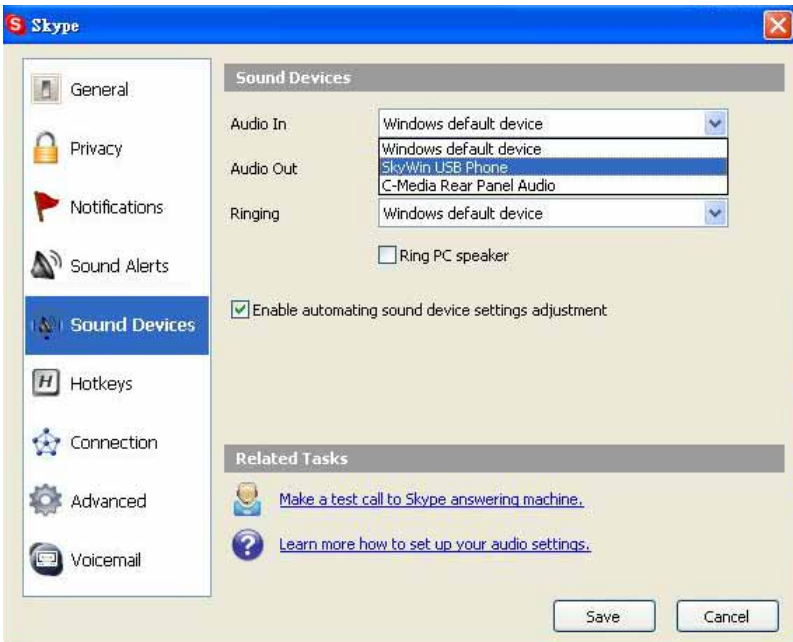
2.7 FAQ

Problem 1

The voice is played from the PC's sound card instead of the USB phone when I make/answer a call?

Solution

Open the Main window of Skype, click on “File->Options”, and go to the table **Hand/headsets**, set **Audio In**, **Audio Out** and **Ringing** to the **SkyWin USB Phone**.

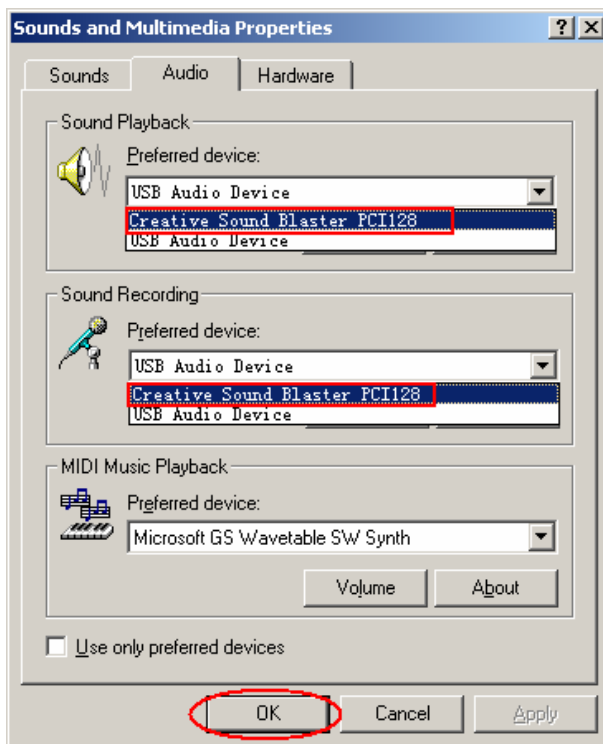


Problem 2

There is no voice comes out when play music?

Solution

Please execute the “Control Panel->Sound and Video (🔊)->Audio”, set **Sound Playback** and **Sound Recording**’s Preferred device to your sound card, it shown as below:



Problem 3

My USB phone cannot work on Windows 2000.

Solution

The Windows 2000 cannot support all of the Sounds and Audio Devices. So please download the DirectX from <http://www.microsoft.com/> to solve this bug.