

APPENDIX

A

PORT PINOUTS AND CABLE DIAGRAMS

A.1 Console Port

Pin No.	Name	Function	Direction
3	TD	Transmit Data	Out
2	RD	Receive Data	In
5	SG	Signal Ground	–
4*	DTR	Data Terminal Ready	Out
7*	RTS	Request to Send	Out

* always pulled high

A.2 RS-232 Plus Port (SLIM Card)

Pin No.	Name	Function	Direction
1	FG	Frame Ground	–
2	TD	Transmit Data	Out
3	RD	Receive Data	In
7	SG	Signal Ground	–

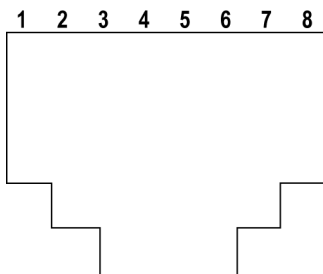
A.3 RS-232/Current Loop Port (SLIM Card)

Pin No.	Name	Function	Direction
1	FG	Frame Ground	–
2	TD	Transmit Data	Out
3	RD	Receive Data	In
4	RTS	Request to Send	Out
5	CTS	Clear to Send	In
6	DSR	Data Set Ready	In
7	SG	Signal Ground	–
8	DCD	Data Carrier Detect	In
12	–	20 mA Current Loop	In
13	–	20 mA Current Loop	In
14	–	20 mA Out	Out
19	–	Loop Enable	Out
20	DTR	Data Terminal Ready	Out

A.4 DA15 Connector Pinout (10Base5 Ethernet)

Pin No.	Function	Direction
1	Signal Ground	–
2	Collision +	In
3	Transmit +	Out
4	Signal Ground	–
5	Receive +	In
6	Signal Ground	–
7	No Connection	–
8	Signal Ground	–
9	Collision -	In
10	Transmit -	Out
11	Signal Ground	–
12	Receive -	In
13	+12 Volt Supply	Out
14	Signal Ground	–
15	No Connection	–

A.5 RJ-45 Connector Pinouts (10Base-T Ethernet)



Contact	Signal
1	TD+
2	TD-
3	RD+
4	Not used
5	Not used
6	RD-
7	Not used
8	Not used



Note: Usually, a straight-through connection is needed to connect Twisted-Pair (10Base-T) to the hub.

A.6 Token Ring Dsub9 Connector

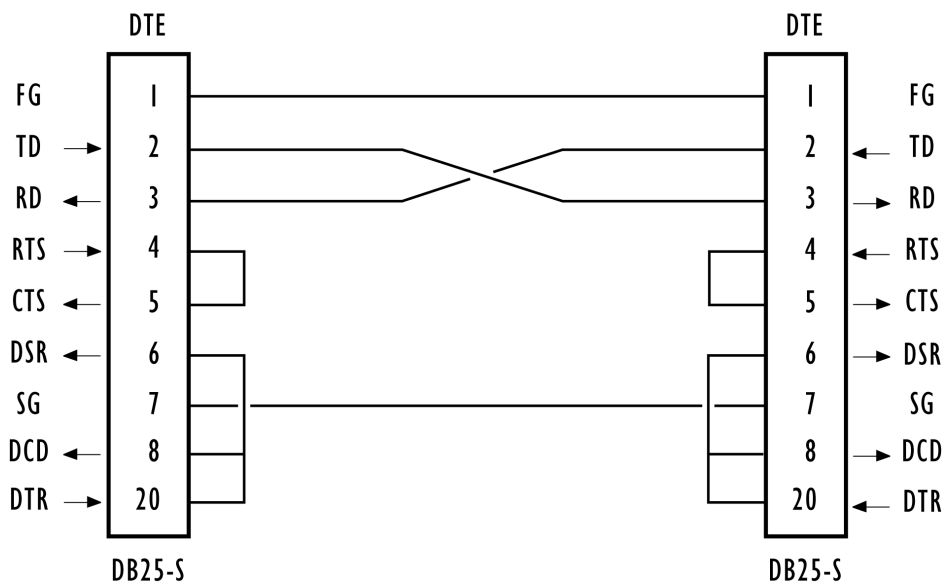
Pin No.	Function	Direction
1	Ring Input (A)	In
2	Frame Ground	–
3	+5 Volt Supply	Out
4	Frame Ground	–
5	Ring Output (B)	Out
6	Ring Input (B)	In
7	Frame Ground	–
8	Frame Ground	–
9	Ring Output (A)	Out

* This connection supports Shielded Twisted Pair (IBM STP) cable Type 1 or 6.

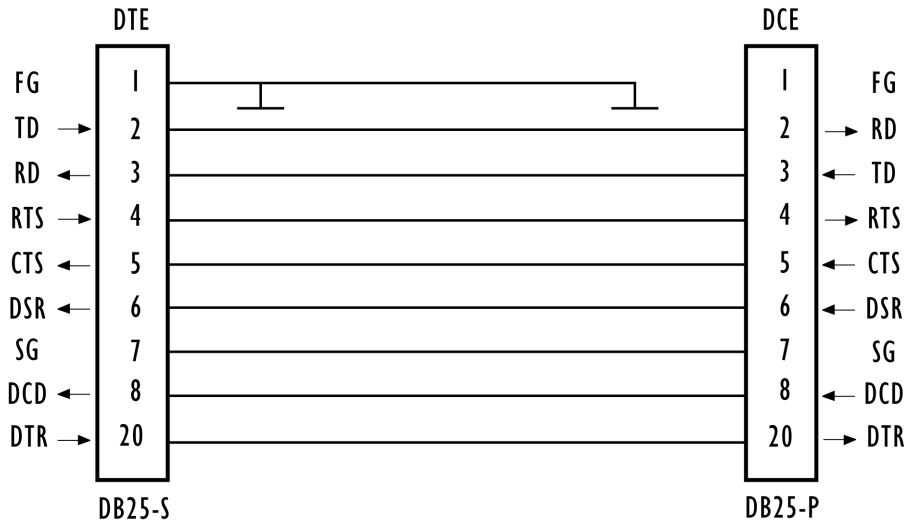
A.7 Serial Cable Descriptions

Cable No.	Function	Connection	Standard Length
16590	9400/9300 to 9150	Direct RS-232	15 feet
16598	9400/9300 to 9150	Modem RS-232	8 feet
16599	9400/9300 to 9150	Current Loop	15 feet
19387	9150 to Console	Direct	6 feet

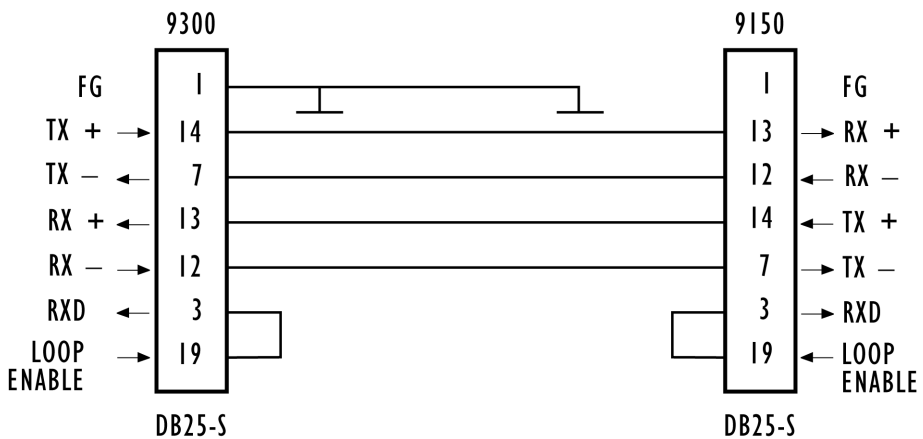
DTE to DTE Cable No. 16590



DTE to DCE Cable No. 16598



Current Loop Cable No. 16599



Console Port Cable No. 19387

