

WORKABOUT PRO RFID MODULE UHF-CA3-AC5-XMOD EXPANSION MODULE INSTRUCTIONS

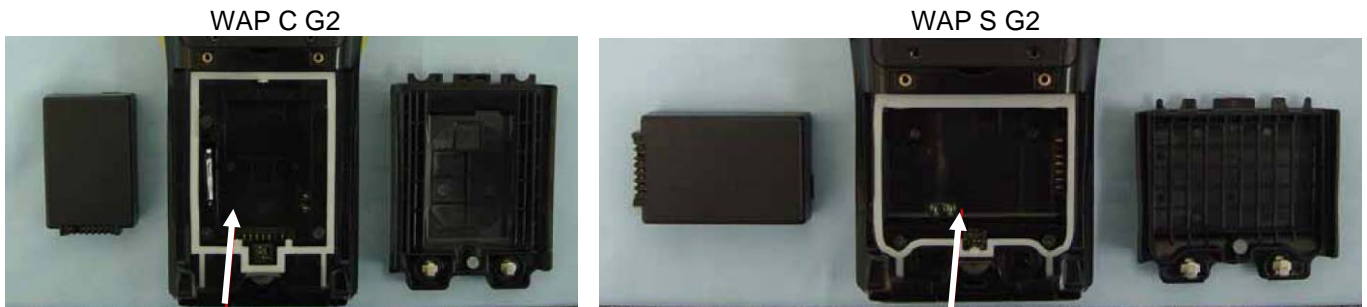
Important: All Approval and safety information is outlined in the 'Workabout pro Handheld-computer User Manual' – part number 8100140A. This manual is available on our website www.pSIONteklogix.com through the community website <http://community.pSIONteklogix.com/home/default.aspx>.

Important: The WORKABOUT PRO with the RFID option must not be held closer than 20 cm from the rest of the body. This product must not be used in a holster or on a belt-clip.

Easily installable expansion modules for the WORKABOUT PRO allow you to customise this hand-held to meet your specific mobile computing requirements. This chapter outlines how to install the RFID Module UHF-CA3-AC5-XMOD (this module is composed of one RFID Coupler UHF-CA3-XMOD and RFID Circular Antenna 915 MHz).

Before installing a module in the WORKABOUT PRO, all power sources must be turned off.

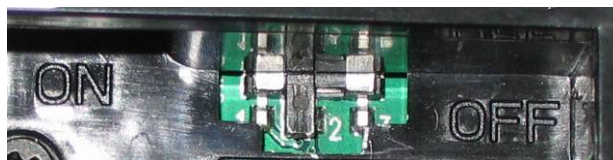
- Remove the batteries. If your unit is using AC power, disconnect it.
- Stick the FCC / IC Label (FCC ID: GM3UHFA3A5, IC ID: 2739D-UHFA3A5) underneath the battery.



Label area

Label area

- Slide the switch to position OFF to shut off internal battery power.



With the power shut down, you can install the RFID Module UHF-CA3-AC5-XMOD.

- Remove and discard the two screws on the bottom of the metal frame.



- Remove the scanner flex



- Put the RFID Coupler UHF-CA3-XMOD in the same alignment of the expansion connector on the WORKABOUT PRO. Apply slight pressure to snap the module into place on the hand-held.



- Use four new screws (M2 x 4 mm) provided to secure the module in place.
- Connect the RFID Circular Antenna to the RFID Coupler UHF-CA3-XMOD.



- Close the extended back plate with the RFID antenna.
- Slide the switch to the position ON to turn power back on and replace the batteries.

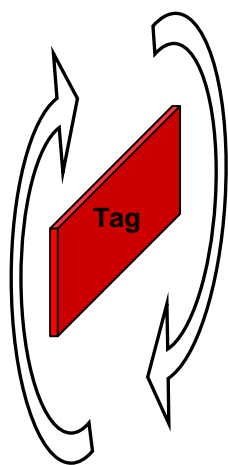
For detailed instructions, please refer to the WORKABOUT PRO Hand-Held Computer User Manual and to the RFID MODULE UHF-CA3-AC5-XMOD User manual. These manuals are available on our website www.pSIONteklogix.com through the PSION TEKLOGIX community web site <http://community.pSIONteklogix.com/home/default.aspx>.

Important: The WORKABOUT PRO G2 with the RFID option must not be held closer than 20 cm from the rest of the body. This product must not be used in a holster or on a belt-clip.

READING AREA:









This area depend of the TAG type, TAG packaging, configuration of the WORKABOUT PRO (scanner, Compact flash...), environment (metallic or not).

Circular Antenna



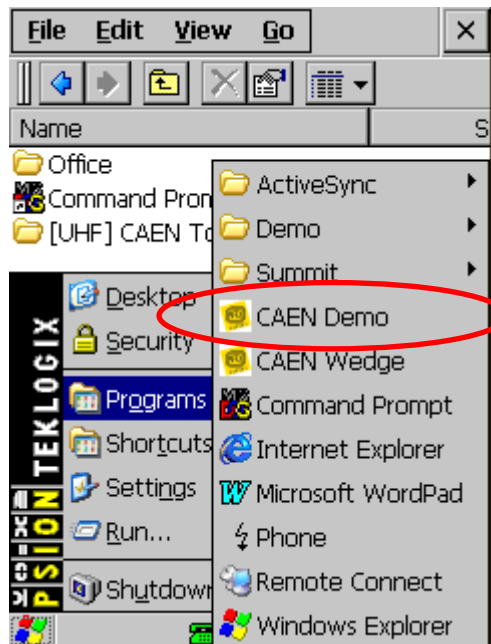
HAND EFFECT:

The location of the hand on the WAP can affect the RFID performance. Here are the different ways to position the hand on the handheld terminal

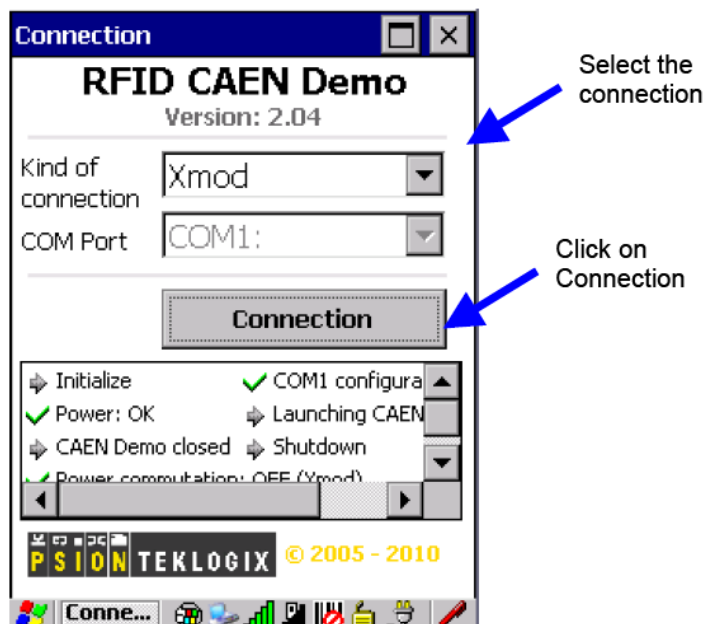
Position of the Hand	Performance	Comments	Status
	Very good 200 – 250 cm	Position recommended	
	Very good 200 – 250 cm	Position recommended	
	Good 175 – 200 cm	Position allowed	
	Very Bad Few centimetres	Position not recommended, the position affects highly the performance. The hand recovers the RFID antenna	

SOFTWARE INSTALLATION:

- Copy and install the CAB file named “[UHF] CAEN Tools.vX.XX.CAB” on the WAP.
- After installation, select “CAEN Demo” in Programs.



- In Connection form, select the kind of connection Xmod and COM Port 1 :



- For the first use, a message box can appear to suggest you to configure the WorkAbout Pro and then reset the device. You have to perform this operation, to have a working connection between RFID module and PTX device.

- To configure CAEN Demo, select the configuration tab.

Click here to know the current application version

Click here to show details concerning the CAEN reader like FW version

Select the protocol according to your tag (if available).

Select the RF Regulation according to your region (if available).

Select the bitrate according to your tag.

- To read the ID of a TAG, select Read Tab and press the button Read. Put the TAG in front of the antenna.

Serial number of TAG

Sum of different TAGs

Sum of reading TAG

Sum of different reading TAGs

TagID	#
303804714277360000093...	10
32223030090703500005E...	10
457063433147322020303...	15

Sum of Tags: 3

Sum of Reads: 35

<p>WORKABOUT PRO RFID MODULE UHF-CA3-AC5-XMOD RFID Regulatory Information</p>
--

IMPORTANT NOTE FOR NORTH AMERICA:

The RFID must not be used whilst the host WORKABOUT PRO is being powered by the ac/dc adaptor.

FCC Information to Users:

This product and its antennas must not be co-located or operated in conjunction with any other antenna or transmitter.

Radiation Exposure Compliance

This product complies with the FCC RF exposure limits for an uncontrolled environment. For continued compliance, the product must not be held closer than 20 cm from the rest of the body. This product must not be used in a holster or on a belt-clip.

Federal Communication Commission Interference Statement.

This equipment has been tested and found to comply with the limits for a Class B digital device, pursuant to Part 15 of the FCC Rules.

These limits are designed to provide reasonable protection against harmful interference in a residential installation. This equipment generates, uses and can radiate radio frequency energy and, if not installed and used in accordance with the instructions, may cause harmful interference to radio communications. However, there is no guarantee that interference will not occur in a particular installation.

If this equipment does cause harmful interference to radio or television reception, which can be determined by turning the equipment off and on, the user is encouraged to try to correct the interference by one of the following measures:

- Reorient or relocate the receiving antenna.
- Increase the separation between the equipment and receiver.
- Connect the equipment into an outlet on a circuit different from that to which the receiver is connected.
- Consult the dealer or an experienced radio/TV technician for help.

This device complies with Part 15 of the FCC Rules. Operation is subject to the following two conditions: (1) This device may not cause harmful interference, and (2) this device must accept any interference received, including interference that may cause undesired operation.

FCC Caution: Any changes or modifications not expressly approved by the party responsible for compliance could void the user's authority to operate this equipment.

Emissions Information for Canada:

This Class B digital apparatus complies with Canadian ICES-003.

Cet appareil numérique de la classe B est conforme à la norme NMB-003 du Canada.