



PRODUCT LABEL SPECIFICATIONS

RFID Module LF-AH1-G2

©PSION TEKLOGIX - Company confidential

Author: Philippe PORTE

File: RFID Module LF-AH1-G2 LabelSmpl & LabelLoc Co-Loc

Date: 6/2/08

Page: 1 / 6

Ref: DPC A00295 A10

PRODUCT LABEL SPECIFICATIONS

RFID Module LF-AH1-G2

Author: Philippe PORTE
File: RFID Module LF-AH1-G2 LabelSmpl & LabelLoc Co-Loc
Date: 25/04/08
Pages: 6
Reference: DPC A00295 A10

Revision	Date	Prepared by	Verify by	Validated by
A10	25/04/08	Philippe PORTE	Pierre BONNEFOY	John INGOLD

PSION TEKLOGIX

Printing date: 02/06/2008 13:57:00



PRODUCT LABEL SPECIFICATIONS

RFID Module LF-AH1-G2

©PSION TEKLOGIX - Company confidential

Author: Philippe PORTE

File: RFID Module LF-AH1-G2 LabelSmpl & LabelLoc Co-Loc

Date: 6/2/08

Page: 2 / 6

Ref: DPC A00295 A10

TABLE OF CONTENTS

1.	<u>SCOPE OF DOCUMENT</u>	3
2.	<u>TERMINOLOGY</u>	3
3.	<u>UPDATING OF DOCUMENT</u>	3
4.	<u>ENVIRONMENT</u>	3
4.1.	DOCUMENTS AND REFERENCE ELEMENTS	3
5.	<u>DESCRIPTION</u>	4
5.1.	SERIAL NUMBER CODIFICATION	4
5.2.	LABEL FOR RFID MODULE LF-AH1-G2	4
5.3.	LABEL CA/US WAP-G2 RFID + BT	4
5.4.	LABEL US WAP-G2 RFID + BT + WIFI RA2041	5
5.5.	LABEL US WAP-G2 RFID + BT + WIFI RA2041 + GPRS RA3030-G2	5
6.	<u>INSTALLATION PROCEDURE</u>	6
6.1.	LABEL AREA FOR RFID MODULE LF-AH1-G2	6
6.2.	LABEL AREA FOR RFID MODULE LF-AH1-G2 BOX	6
6.3.	LABEL AREA FOR WAP-G2	6



PRODUCT LABEL SPECIFICATIONS

RFID Module LF-AH1-G2

©PSION TEKLOGIX - Company confidential

Author: Philippe PORTE

File: RFID Module LF-AH1-G2 LabelSmpl & LabelLoc Co-Loc

Date: 6/2/08

Page: 3 / 6

Ref: DPC A00295 A10

1. SCOPE OF DOCUMENT

This document describes the Product label specification of the RFID Module LF-AH1-G2.

This document is only for personnel associated in the project, and is strictly confidential.

2. TERMINOLOGY

3. UPDATING OF DOCUMENT

Version	Evolutions	Author	Date
A00	Creation	Philippe PORTE	09/07/07
A10	Add Co-location label	Philippe PORTE	25/04/08

4. ENVIRONMENT

4.1. Documents and reference elements

Document	Reference	Version	Date



PRODUCT LABEL SPECIFICATIONS

RFID Module LF-AH1-G2

©PSION TEKLOGIX - Company confidential

Author: Philippe PORTE

File: RFID Module LF-AH1-G2 LabelSmpl & LabelLoc Co-Loc

Date: 6/2/08

Page: 4 / 6

Ref: DPC A00295 A10

5. DESCRIPTION

5.1. Serial number codification

S/N: 171204 LFAH1 001

Daily incremental number

LFAH1: RFID Module LF-AH1-G2

Date of production ex: 17 December 2004 -> 171204

5.2. Label for RFID Module LF-AH1-G2

This device complies with part 15 of the FCC Rules. Operation is subject to the following two conditions:
 (1) This device may not cause harmful interference, and
 (2) this device must accept any interference received, including interference that may cause undesired operation.

IC: 2739D-LFAH1G2 FCC ID: GM3LFAH1G2

PSION TEKLOGIX Rating: --- 5 v, 150 mA
 M/N: RFID MODULE LF-AH1-G2
 P/N: NCI A00262 S/N: 171204LFAH1001
 Made in France

This part is to be placed directly on the product and the

5.3. Label CA/US WAP-G2 RFID + BT

WAP C G2:

CONTAINS :

FCC ID: GM3LFAH1G2
 IC: 2739D-LFAH1G2

PSION TEKLOGIX
 7527C-G2 WORKABOUT PRO
 RATING: 5 VDC 3A MAX
 CONTAINS: FCC ID: GM37525BTB
 IC: 2739D-7525BTB

CE 0682
 N15025
 For Batteries See User Instructions
 1050928B

WAP S G2:

CONTAINS :

FCC ID: GM3LFAH1G2
 IC: 2739D-LFAH1G2

PSION TEKLOGIX
 7527S-G2 WORKABOUT PRO
 RATING: 5 VDC --- 3A MAX
 CONTAINS: FCC ID: GM37525BTB
 IC: 2739D-7525BTB

CE 0682
 N15025
 For Batteries See User Instructions
 1050928B



PRODUCT LABEL SPECIFICATIONS

RFID Module LF-AH1-G2

©PSION TEKLOGIX - Company confidential

Author: Philippe PORTE

File: RFID Module LF-AH1-G2 LabelSmpl & LabelLoc Co-Loc

Date: 6/2/08

Page: 5 / 6

Ref: DPC A00295 A10

5.4. Label US WAP-G2 RFID + BT + WIFI RA2041

WAP C G2:

CONTAINS:
FCC ID: GM3LFAH1G2
FCC ID: GM37527RA2041



WAP S G2:

CONTAINS:
FCC ID: GM3LFAH1G2
FCC ID: GM37527RA2041



5.5. Label US WAP-G2 RFID + BT + WIFI RA2041 + GPRS RA3030-G2

WAP C G2:

CONTAINS:
FCC ID: GM3LFAH1G2
FCC ID: GM37527RA2041
FCC ID: GM375273RADA



WAP S G2:

CONTAINS:
FCC ID: GM3LFAH1G2
FCC ID: GM37527RA2041
FCC ID: GM375273RADA



PRODUCT LABEL SPECIFICATIONS

RFID Module LF-AH1-G2

©PSION TEKLOGIX - Company confidential

Author: Philippe PORTE

File: RFID Module LF-AH1-G2 LabelSmpl & LabelLoc Co-Loc

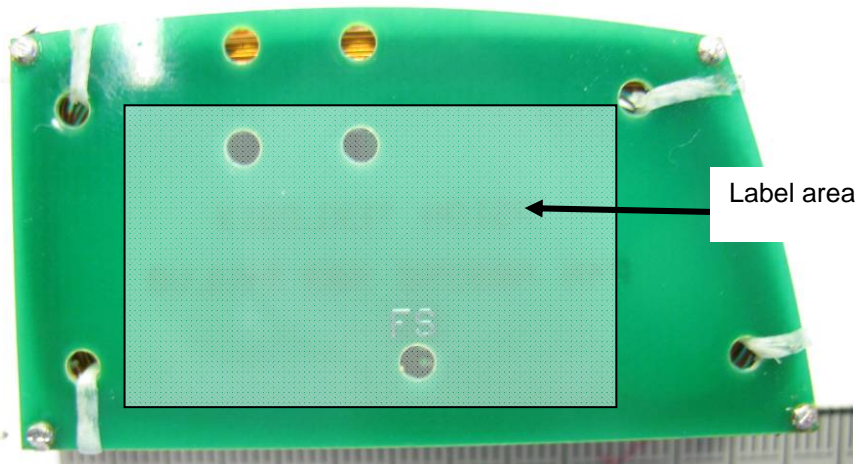
Date: 6/2/08

Page: 6 / 6

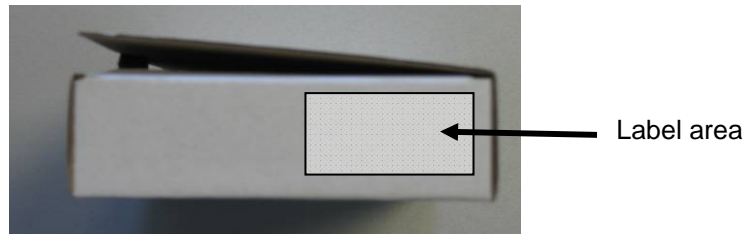
Ref: DPC A00295 A10

6. INSTALLATION PROCEDURE

6.1. Label area for RFID Module LF-AH1-G2



6.2. Label area for RFID Module LF-AH1-G2 Box



6.3. Label area for WAP-G2



Label area

Label area