

WORKABOUT PRO G2
RFID Reader HF-AM2-G2
User Manual



www.pSIONteklogix.com

Title	RFID reader HF-AM2-G2 User Manual		
Doc Type	User Manual		
Doc Id	TS A00350		
Revision	Date	Name	Status/Comment
A00	12/12/07	F.DEBULOIS	Initial Version

Specifications are subject to change without notice

Psion Teklogix™ is a trademark of Psion Teklogix Inc. Other product names mentioned in this document may be trademarks of Psion Teklogix Inc. or trademarks or registered trademarks of other hardware, software, or service providers and are used herein for identification purposes only.

Table of Content

I. Important – read carefully	4
II. Overview	4
II.1. Bill of Material	4
II.2. Interface Board installation	5
II.3. Reader Board Installation	6
II.3.1. HF-AM2-G2 Endcap	6
II.3.2. SAGEM endcap dual reader with slot	6
III. Hardware installation	7
III.1. Preparing	7
III.2. Interface Board installation	8
III.3. Reader Board installation	8
III.3.1. HF-AM2-G2 Endcap assembly	8
III.3.2. SAGEM endcap dual reader with slot assembly	10
III.4. Endcap connection	14
III.4.1. HF-AM2-G2 Endcap	14
III.4.2. SAGEM endcap dual reader with slot	15
III.5. Final steps	15
IV. Reading Area	16
V. RFID Regulatory Information	16

I. Important – read carefully

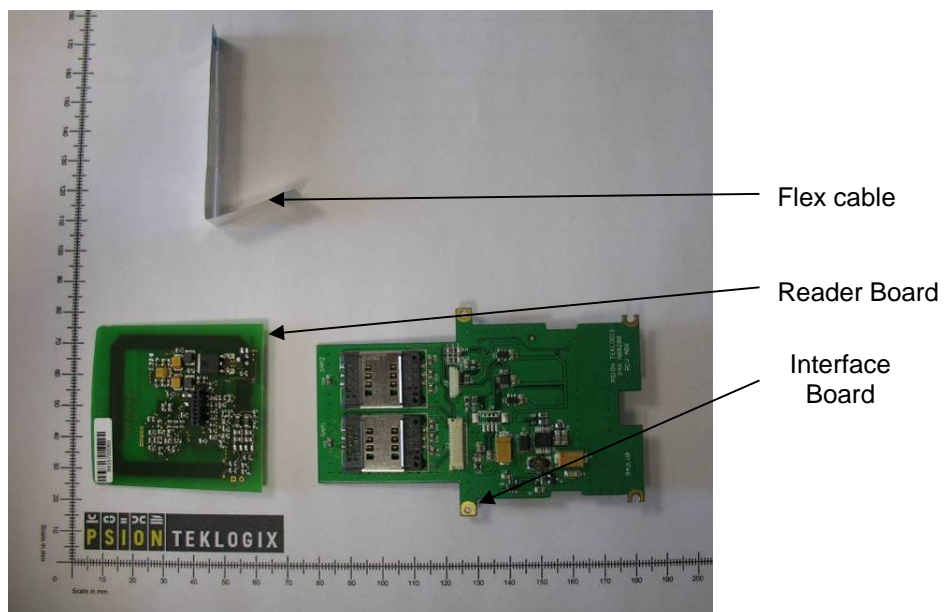
All Approval and safety information is outlined in the 'Workabout pro G2 Handheld-computer User Manual' – part number 8100140A. This manual is available on our website www.pSIONteklogix.com through the Teknet extranet

II. Overview

II.1. Bill of Material

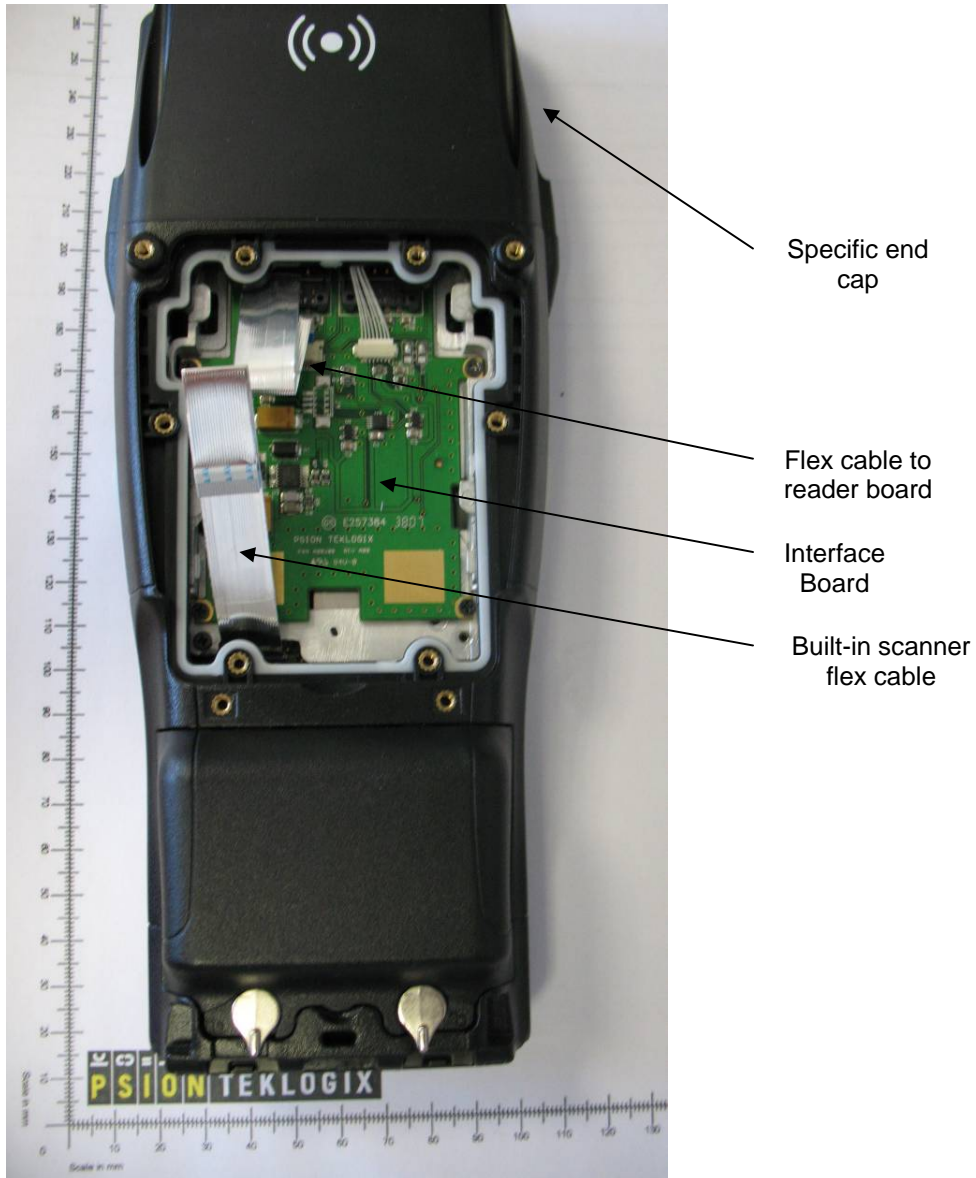
RFID Reader HF-AM2-G2 is composed of :

- an interface board, connected in the Workabout Pro G2 Handheld computer
- a reader board, with its built-in antenna
- a flex cable, which connects the two boards.



II.2. Interface Board installation

The interface Board has to be installed in the Workabout Pro:



II.3. Reader Board Installation

The reader board has to be installed in a specific endcap depending of the configuration:

II.3.1. HF-AM2-G2 Endcap



II.3.2. SAGEM endcap dual reader with slot



III. Hardware installation

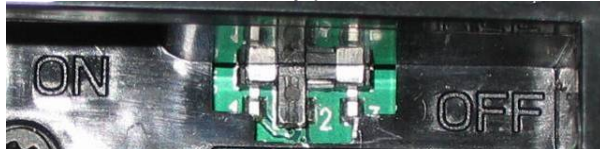
III.1. Preparing

Before installing a module in the WORKABOUT PRO G2, all power sources must be turned off.

Remove the batteries. If your unit is using AC power, disconnect it.



Slide the switch to position OFF to shut off internal battery power



Remove the End cap at the top of the WORKABOUT PRO G2



Remove the backplate



III.2. Interface Board installation

Insert the board as shown and screw the 4 provided screws



Plug the flex cable as shown

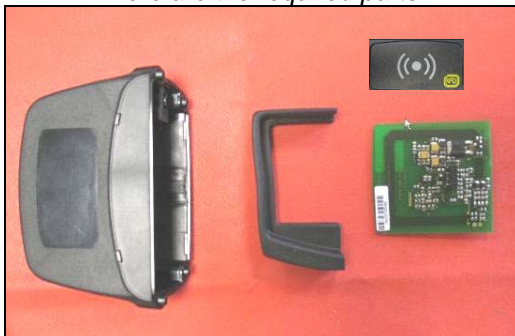


III.3. Reader Board installation

The reader board intends to fit in a specific endcap which depends on the desired configuration. Each following paragraph describes how to assemble every configuration.

III.3.1. HF-AM2-G2 Endcap assembly

Here are the required parts



- A multipurpose endcap
- A rubber
- A sticker

Insert the reader board in the rubber



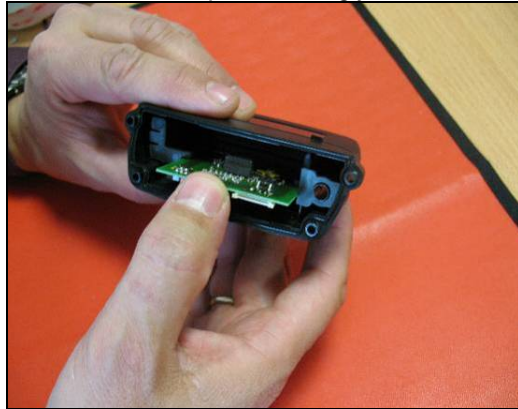
Inject silicon on the 3 internal sides of the endcap



Place the rubber inside the endcap...



and press strongly



Put silicon between the rubber and the reader board



in order to ensure a good holding

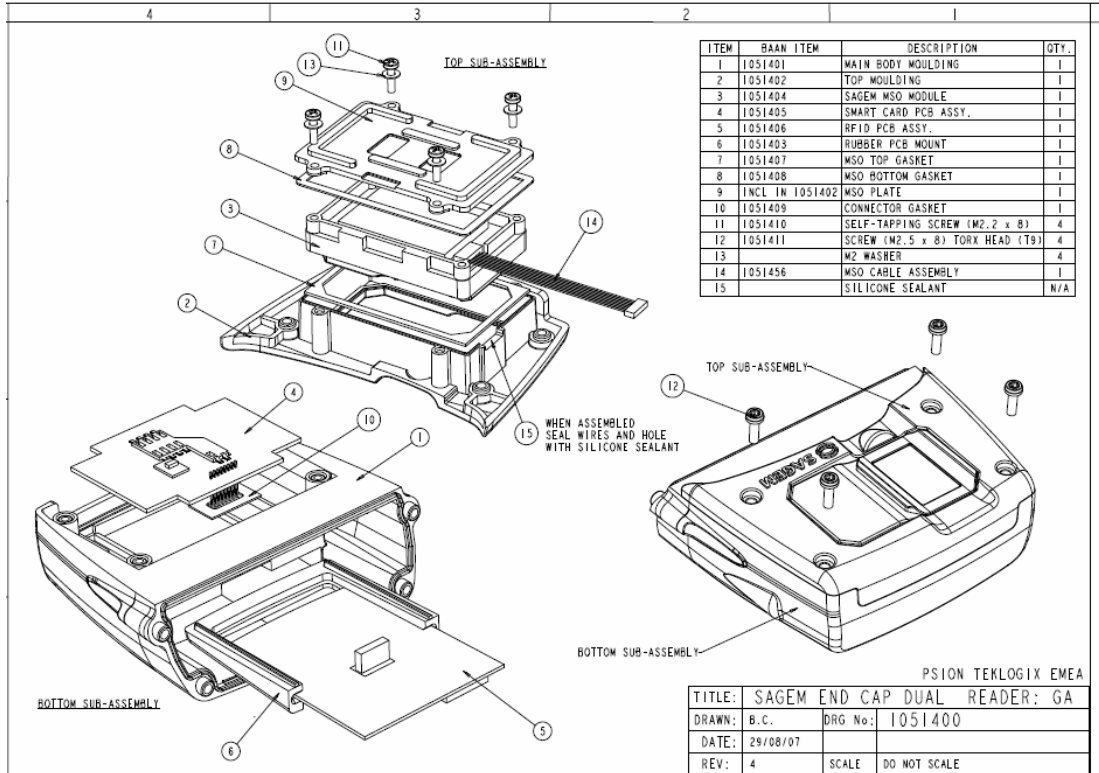


Stick the sticker on the top of the endcap

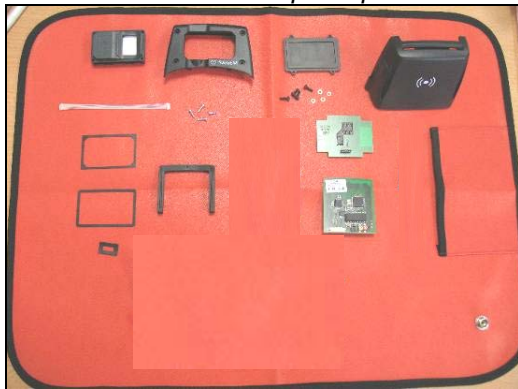


III.3.2. SAGEM endcap dual reader with slot assembly

The following drawing shows the whole assembly



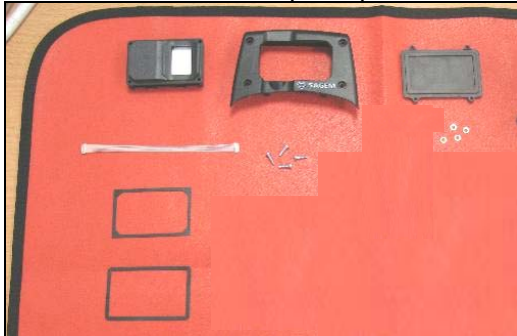
Here are the required parts



- 1 MSO sensor
- 1 Top moulding
- 1 MSO plate
- 1 biometric endcap
- 1 8-ways MSO cable
- 4 self tapping screws
- 4 thox screws
- 4 washers
- 1 smart card board
- 3 gaskets
- 1 rubber
- 1 reader board

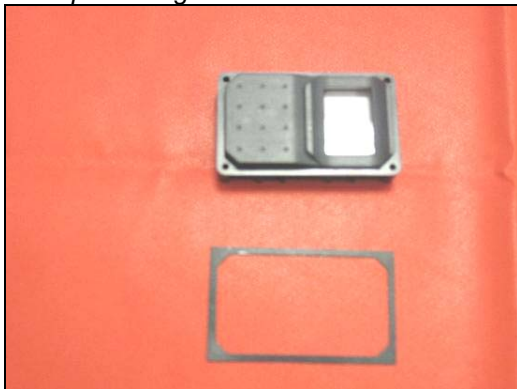
The first step is to build the fingerprint unit (top- subassembly)

Here are the required parts



- 1 MSO sensor
- 1 Top moulding
- 1 MSO plate
- 1 8-ways MSO cable
- 4 self tapping screws
- 4 washers
- 2 gaskets

Prepare the gasket and the MSO sensor



Place the gasket on the sensor as shown



Place the sensor in the top moulding



Check the gasket positioning



Connect the MSO cable to the MSO sensor



Prepare the MSO plate and its gasket



Put the gasket on the plate as shown



Place the cover on the top moulding



Screw the 4 self tapping screws with their washer



Put silicon in the MSO cable window to ensure proper sealing

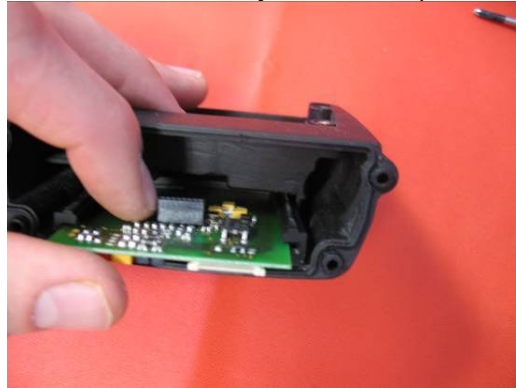


It is now time to perform final assembly:

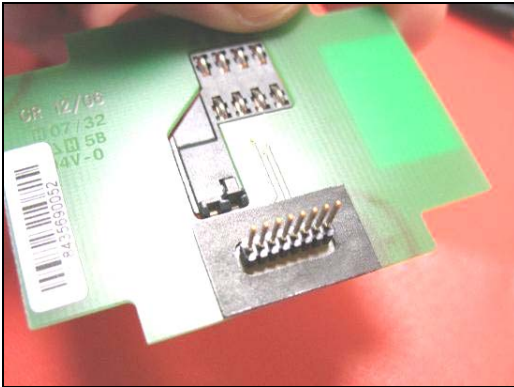
Insert the reader board in the rubber



Insert the assembly in the endcap slot



Stick the gasket around the smart card board connector



Place the smart card board on the top of the endcap



The smart card board and the reader board are plugged together with a 8-ways SIL connector



Pass the 8 way connector of the fingerprint unit through the window of the endcap



Close the endcap with the fingerprint unit and screw the 4 thorx screws



Finish the endcap sealing with a silicon injection in the 8-way cable window.

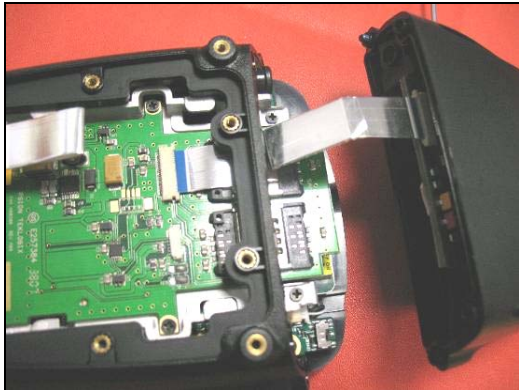


III.4. Endcap connection

The endcap has to be connected to the interface board:

III.4.1. HF-AM2-G2 Endcap

Connect the flex cable from the interface board to the reader board.

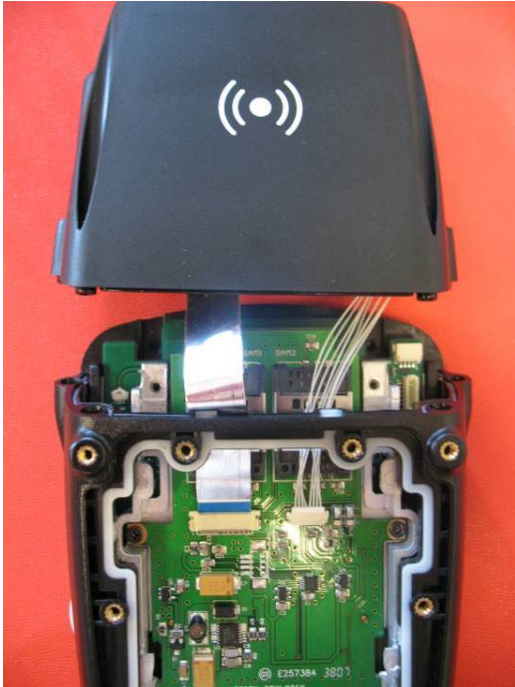


Screw then endcap

III.4.2. SAGEM endcap dual reader with slot

Connect the flex cable from the interface board to the reader board. And the MSO cable in the dedicated connector

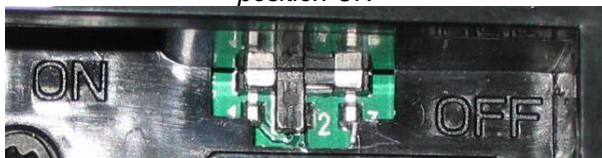
Screw then endcap



III.5. Final steps

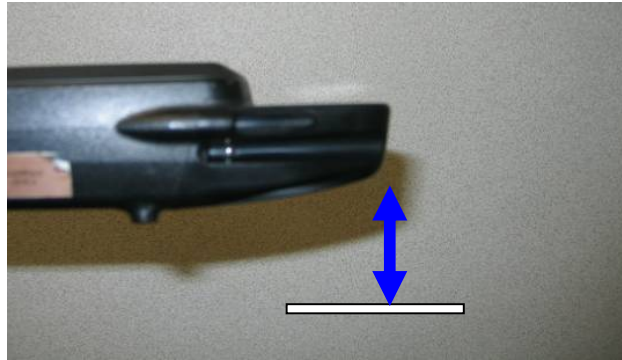
Slide the switch located in the battery casing to position ON

Put back the batteries and close the battery cover.



IV. Reading Area

This area depend of the TAG type, TAG packaging, configuration of the WORKABOUT PRO (scanner, Compact flash...), environment (metallic or not).



V. RFID Regulatory Information

CE Marking

When used in a residential, commercial or light industrial environment the product and its approved UK and European peripherals fulfil all requirements for CE marking.

R&TTE Directive 1999/5/EC

This equipment complies with the essential requirements of EU Directive 1999/5/EC (Declaration available: www.pSIONteklogix.com/DoC).

Cet équipement est conforme aux principales caractéristiques définies dans la Directive européenne RTTE 1999/5/CE. (Déclaration disponible sur le site: www.pSIONteklogix.com/DoC).

Die Geräte erfüllen die grundlegenden Anforderungen der RTTE-Richtlinie (1999/5/EG). (Den Wortlaut der Richtlinie finden Sie unter: www.pSIONteklogix.com/DoC).

Questa apparecchiatura è conforme ai requisiti essenziali della Direttiva Europea R&TTE 1999/5/CE. (Dichiarazione disponibile sul sito: www.pSIONteklogix.com/DoC).

Este equipo cumple los requisitos principales de la Directiva 1995/5/CE de la UE, "Equipos de Terminales de Radio y Telecomunicaciones". (Declaración disponible en: www.pSIONteklogix.com/DoC).

Este equipamento cumpre os requisitos essenciais da Directiva 1999/5/CE do Parlamento Europeu e do Conselho (Directiva RTT). (Declaração disponível no endereço: www.pSIONteklogix.com/DoC).

Ο εξοπλισμός αυτός πληροί τις βασικές απαιτήσεις της κοινοτικής οδηγίας EU R&TTE 1999/5/EK. (Η δήλωση συμμόρφωσης διατίθεται στη διεύθυνση: www.pSIONteklogix.com/DoC)

Deze apparatuur voldoet aan de noodzakelijke vereisten van EU-richtlijn betreffende radioapparatuur en telecommunicatie-eindapparatuur 199/5/EG. (verklaring beschikbaar: www.pSIONteklogix.com/DoC).

Dette udstyr opfylder de Væsentlige krav i EU's direktiv 1999/5/EC om Radio- og teleterminaludstyr. (Erklæring findes på: www.pSIONteklogix.com/DoC).

Dette utstyret er i overensstemmelse med hovedkravene i R&TTE-direktivet (1999/5/EC) fra EU. (Erklæring finnes på: www.pSIONteklogix.com/DoC).

Utrustningen uppfyller kraven för EU-direktivet 1999/5/EC om ansluten teleutrustning och ömsesidigt erkännande av utrustningens överensstämmelse (R&TTE). (Förklaringen finns att läsa på: www.pSIONteklogix.com/DoC).

Tämä laite vastaa EU:n radio- ja telepäätelaitedirektiivin (EU R&TTE Directive 1999/5/EC) vaatimuksia. (Julkilausuma nähtävillä osoitteessa: www.pSIONteklogix.com/DoC).

PSION TEKLOGIX tímto prohlašuje, že tohle mobilní zařízení je ve shodě se základními požadavky a dalšími příslušnými ustanoveními směrnice 1995/5/ES (NV č. 426/2000 Sb.) a Prohlášení o shodě je k dispozici na www.pSIONteklogix.com/DoC.

Toto zařízení lze provozovat v České republice na základě generální licence č. GL - 12/R/2000.

PSION TEKLOGIX týmto vyhlasuje, že toto mobilné zariadenie spĺňa základné požiadavky a všetky príslušné ustanovenia Smernice 1995/5/ES (NV č. 443/2001 Z.z.) a Vyhlásenie o zhode je k dispozícii na www.pSIONteklogix.com/DoC.

Toto zariadenie je možné prevádzkovať v Slovenskej republike na základe Všeobecného povolenia č. VPR-01/2001.

Настоящото устройство е в съответствие с основните изисквания на европейската Директива 1999/5/EC (Декларацията за съответствие може да бъде намерена на адрес: www.pSIONteklogix.com/DoC)

Acest echipament satisface cerințele esențiale ale Directivei UE 1999/5/EC
(Declarația poate fi găsită pe site-ul: www.pSIONteklogix.com/DoC)

Oprema je skladna z bistvenimi zahtevami EU direktive 1999/5/EC
(Deklaracija je na voljo: www.pSIONteklogix.com/DoC)

Käesolev seade vastab EU Direktiivile 1999/5/EC (selgitus saadaval:
www.pSIONteklogix.com/DoC)

Az eszköz megfelel az EU 1999/5/EC fő direktíváinak (a nyilatkozat
megtalálható: www.pSIONteklogix.com/DoC)

Šī aparatūra nodrošina nepieciešamas ES Direktīvas prasības
(Deklarācija ir pieejama: www.pSIONteklogix.com/DoC)

Įranga atitinka pagrindinius EU direktyvos 1999/5/EC reikalavimus
(Deklaraciją galima rasti www.pSIONteklogix.com/DoC)

Dan l-apparat huwa konformi mal-kriterji tad-direttiva ta' l- EU 1999/5/EC
(Din id-dikjarazzjoni tista ssiba fuq is sit www.pSIONteklogix.com/DoC)

To urządzenie spełnia wymagania zasadnicze dyrektywy Unii
Europejskiej 1999/5/EC (Deklarację zgodności można znaleźć
pod adresem internetowym www.pSIONteklogix.com/DoC)

IMPORTANT NOTE FOR NORTH AMERICA:

The RFID must not be used whilst the host WORKABOUT PRO is being powered by the ac/dc adaptor.

FCC Information to Users:

This product and its antennas must not be co-located or operated in conjunction with any other antenna or transmitter.

Radiation Exposure Compliance

This product complies with the FCC RF exposure limits for an uncontrolled environment. For continued compliance, the product must not be held closer than 20 cm from the rest of the body.

Federal Communication Commission Interference Statement.

This equipment has been tested and found to comply with the limits for a Class B digital device, pursuant to Part 15 of the FCC Rules.

These limits are designed to provide reasonable protection against harmful interference in a residential installation. This equipment generates uses and can radiate radio frequency energy and, if not installed and used in accordance with the instructions, may cause harmful interference to radio communications. However, there is no guarantee that interference will not occur in a particular installation.

If this equipment does cause harmful interference to radio or television reception, which can be determined by turning the equipment off and on, the user is encouraged to try to correct the interference by one of the following measures:

- Reorient or relocate the receiving antenna.
- Increase the separation between the equipment and receiver.
- Connect the equipment into an outlet on a circuit different from that to which the receiver is connected.
- Consult the dealer or an experienced radio/TV technician for help.

This device complies with Part 15 of the FCC Rules. Operation is subject to the following two conditions: (1) This device may not cause harmful interference, and (2) this device must accept any interference received, including interference that may cause undesired operation.

FCC Caution: Any changes or modifications not expressly approved by the party responsible for compliance could void the user's authority to operate this equipment.

Emissions Information for Canada:

This Class B digital apparatus complies with Canadian ICES-003.

Cet appareil numérique de la classe B est conforme à la norme NMB-003 du Canada.