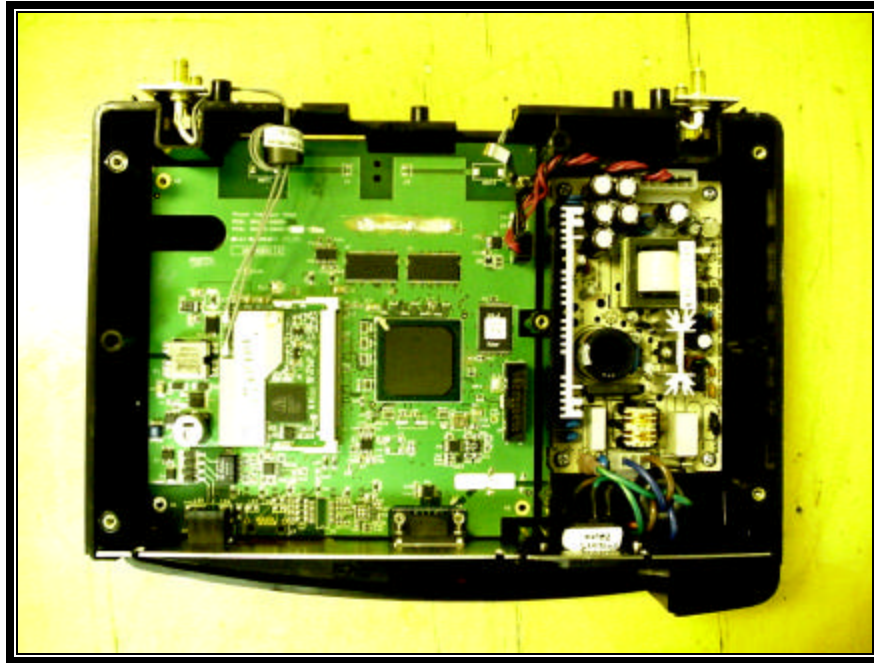
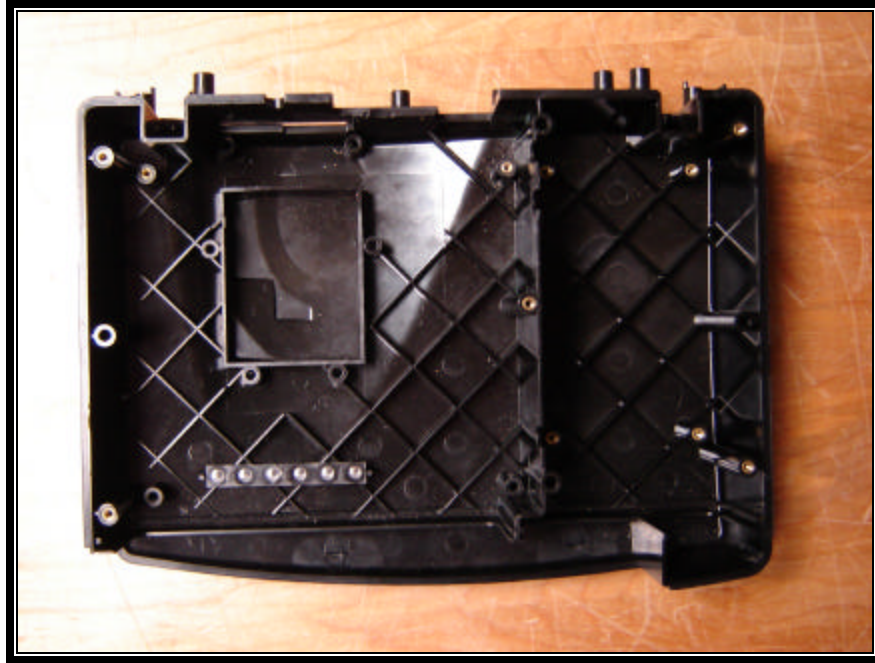


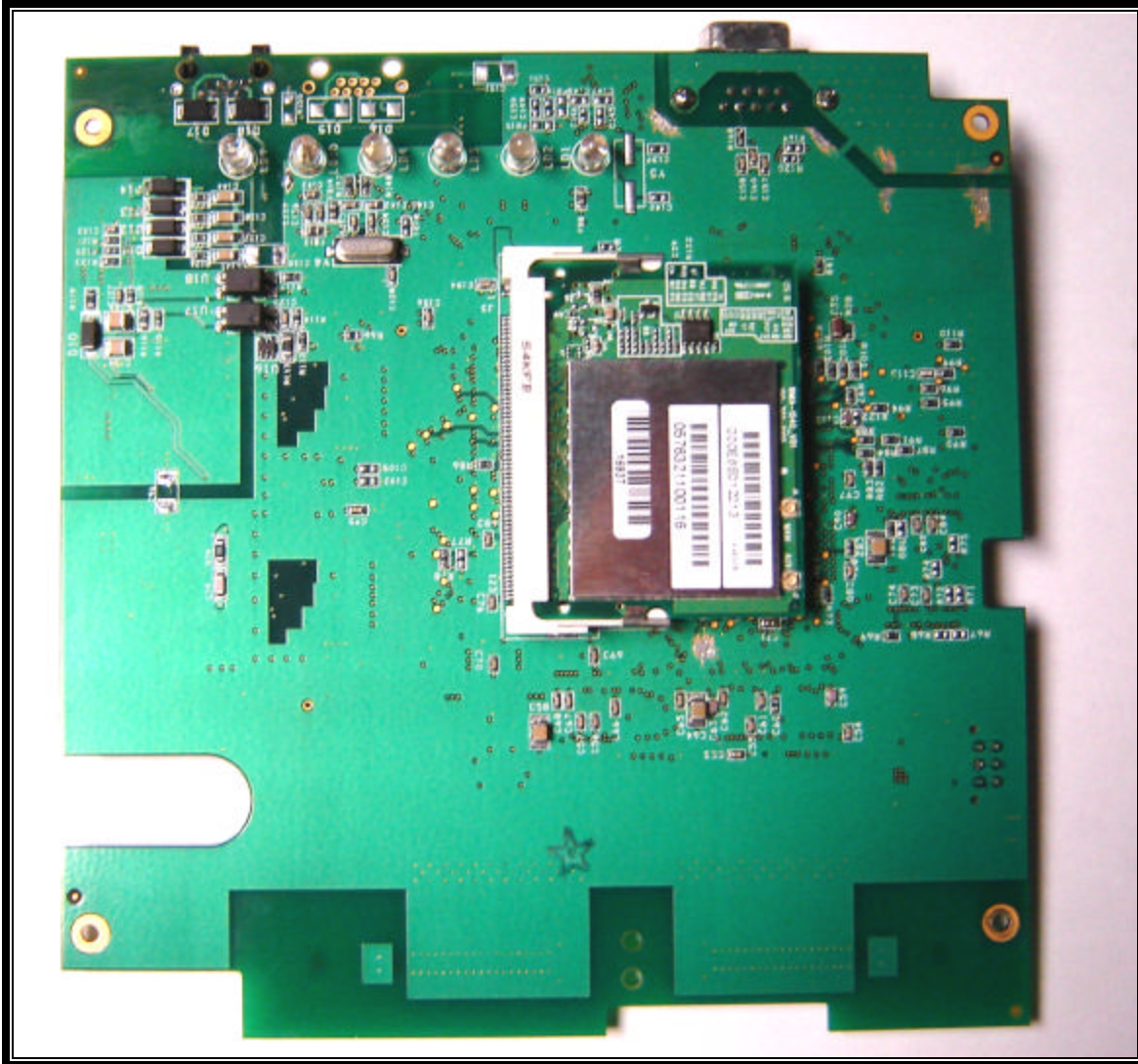
Appendix P: Internal Photographs



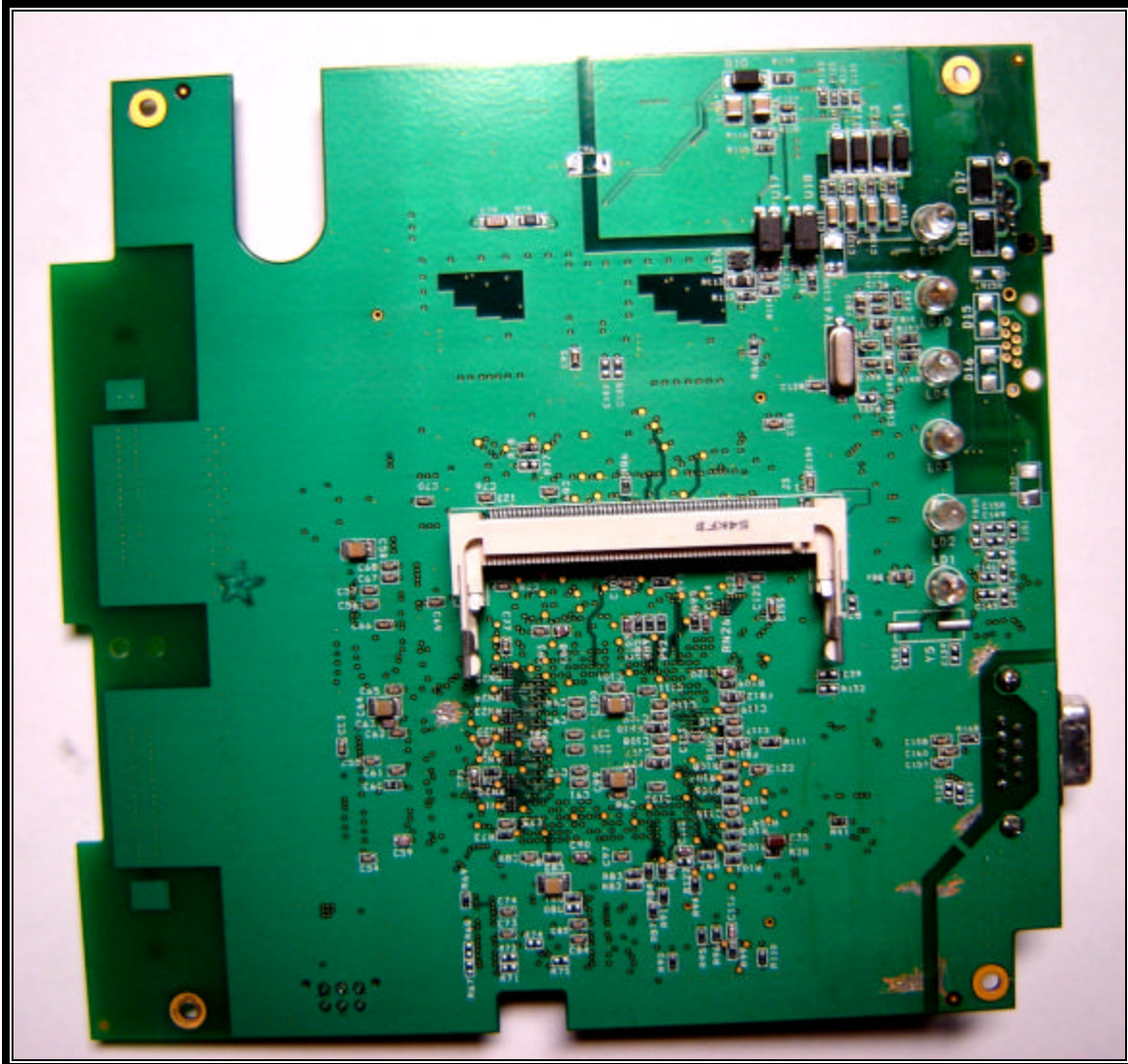
Photograph 29: Inside Bottom View with PCB's



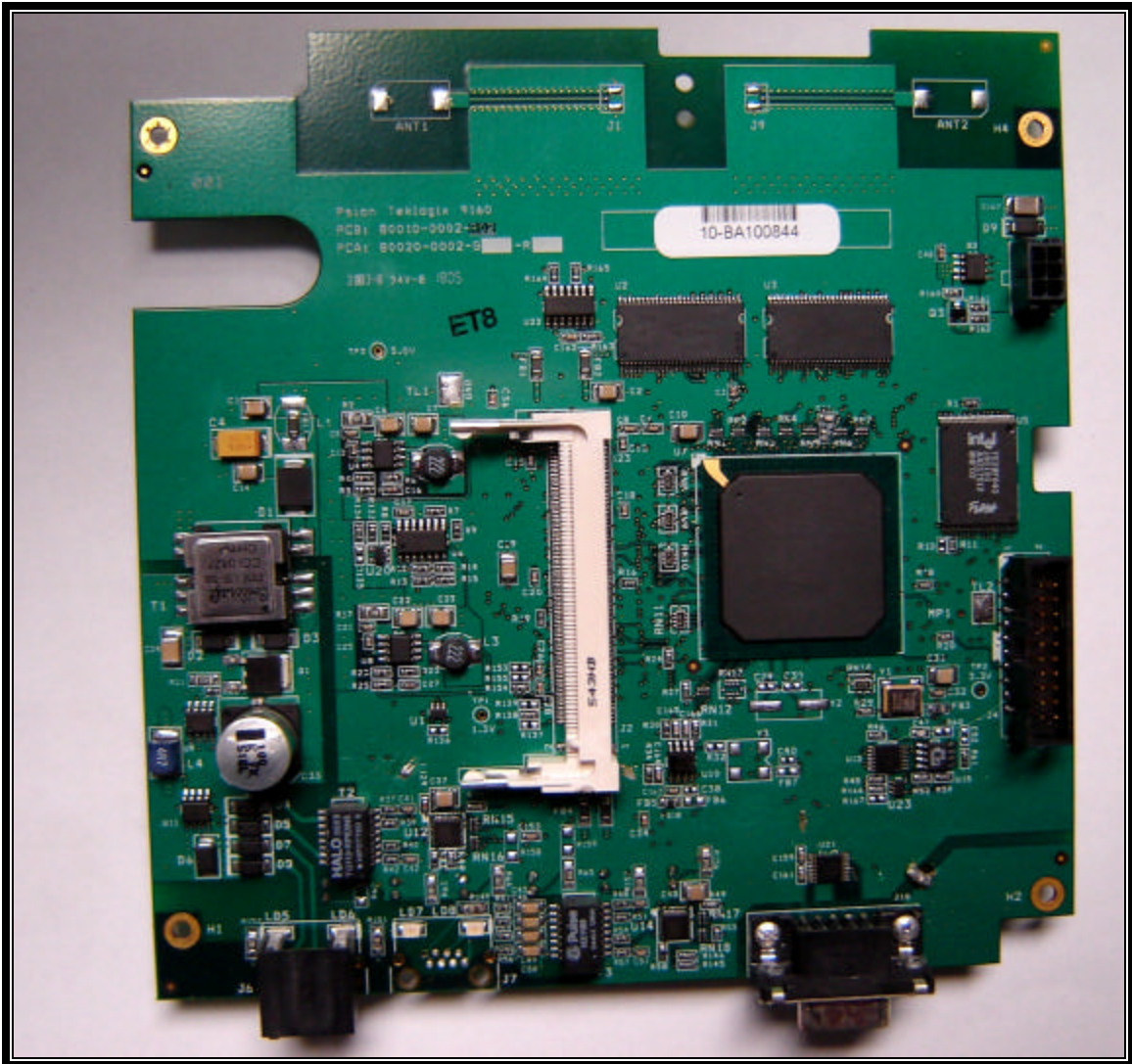
Photograph 30: Inside Bottom View PCB's Removed



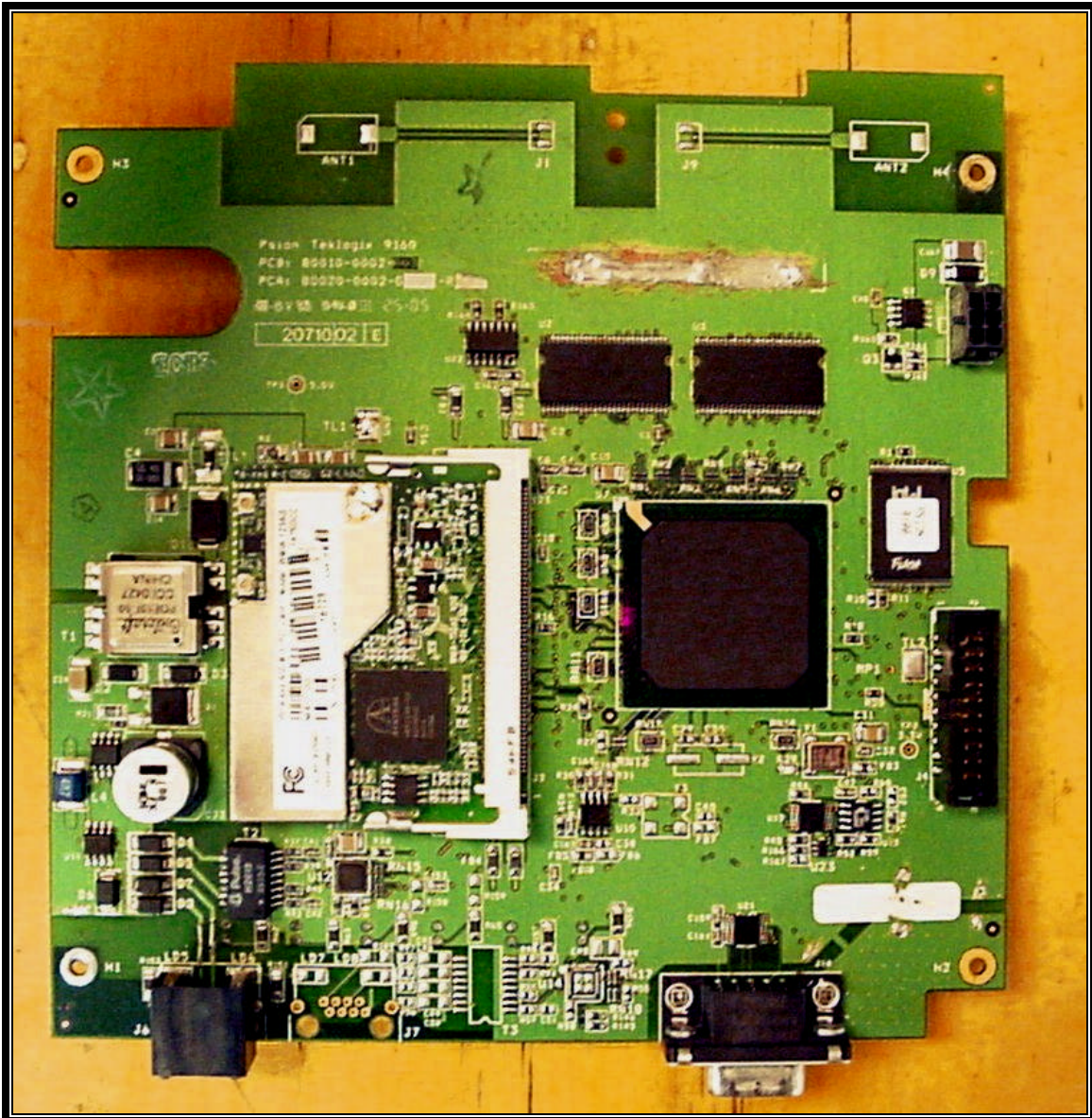
Photograph 31: Main PCB; Top View with Radio Card



Photograph 32: Main PCB; Top View Radio Removed



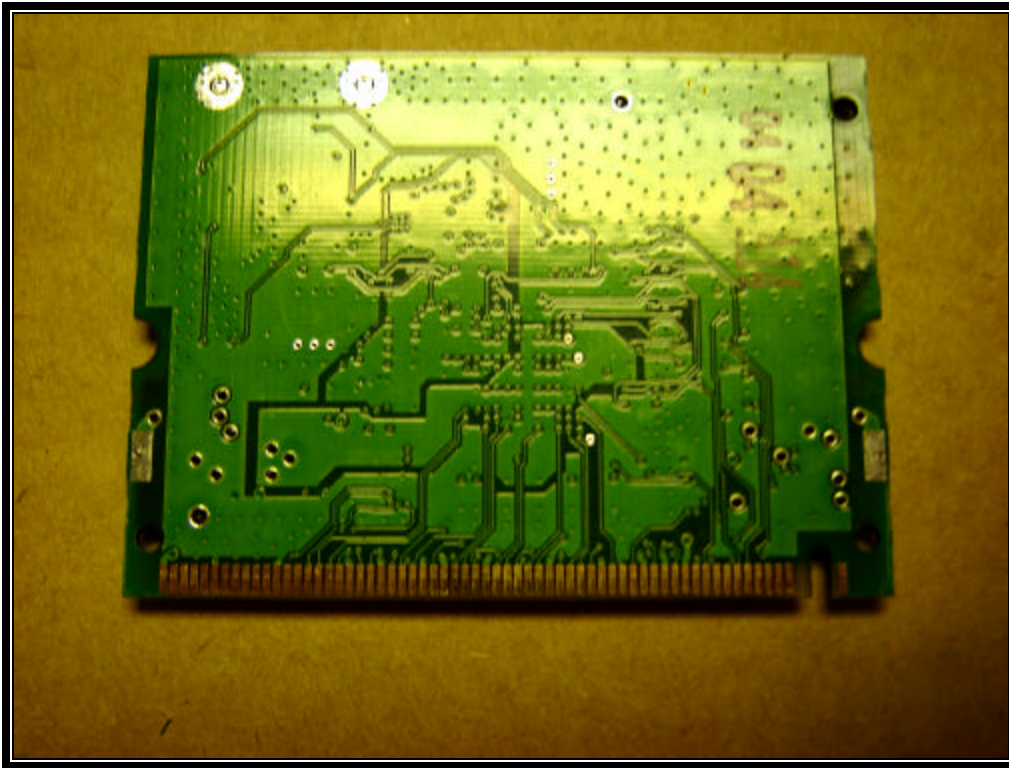
Photograph 33: Main PCB Bottom View



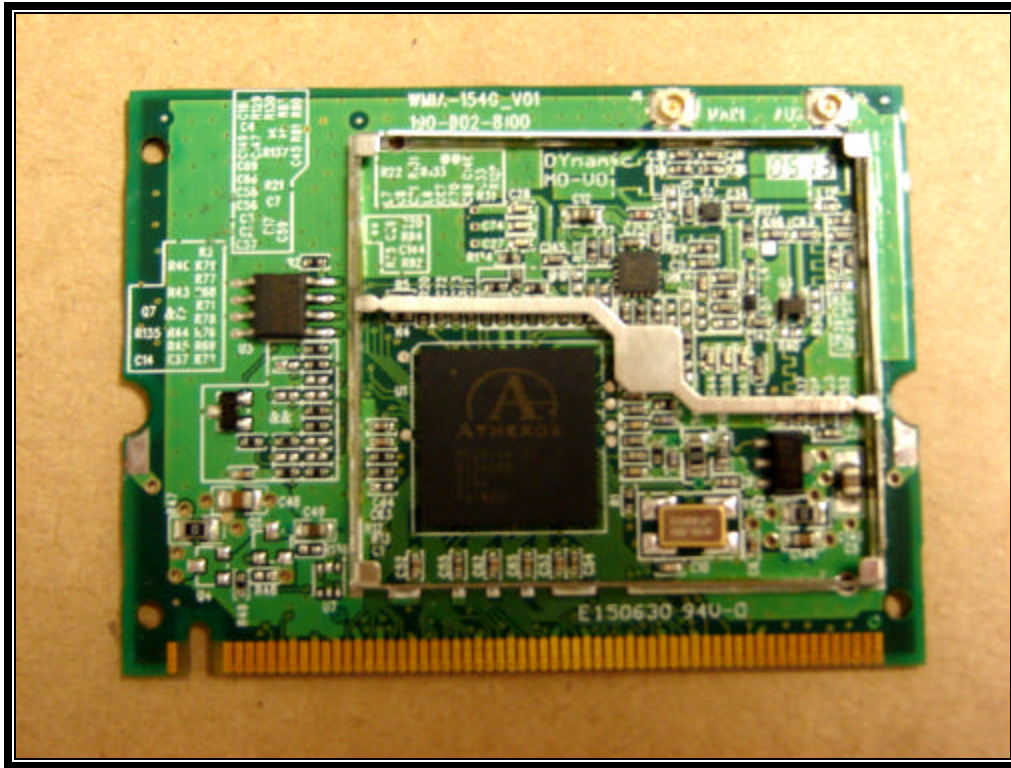
Photograph 34: Main PCB Bottom View with Radio Card



Photograph 35: WMIA-154G-V01 802.11b/g Radio Card Front View with Shield



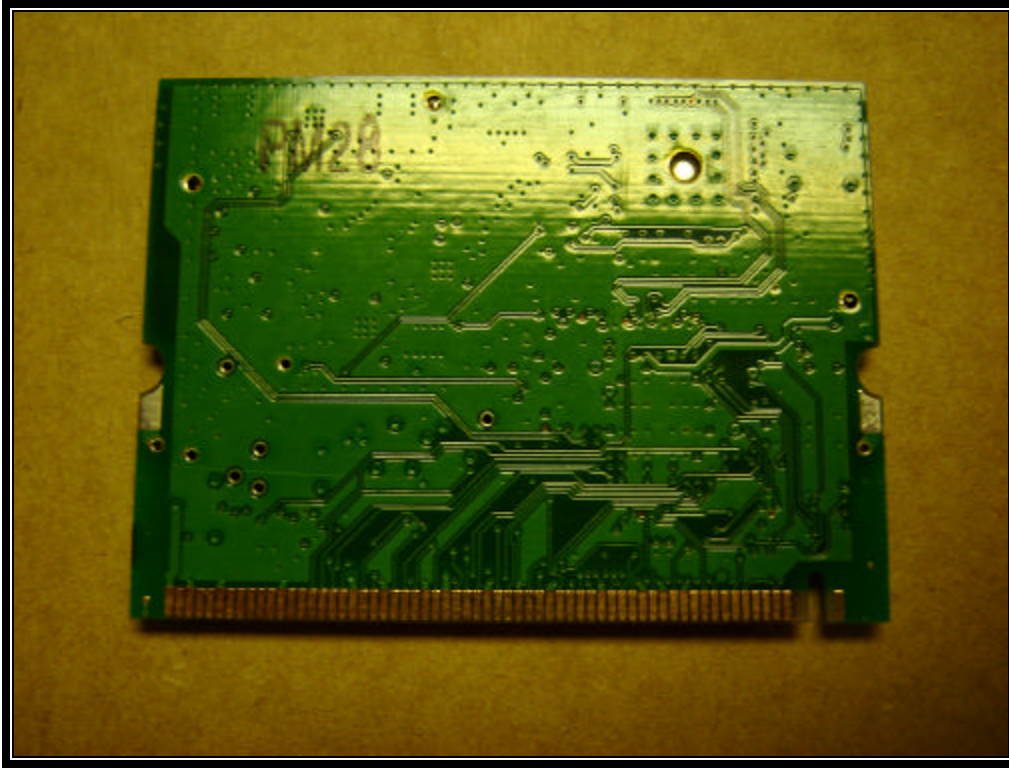
Photograph 36: WMIA-154G-V01 802.11b/g Radio Card Back View



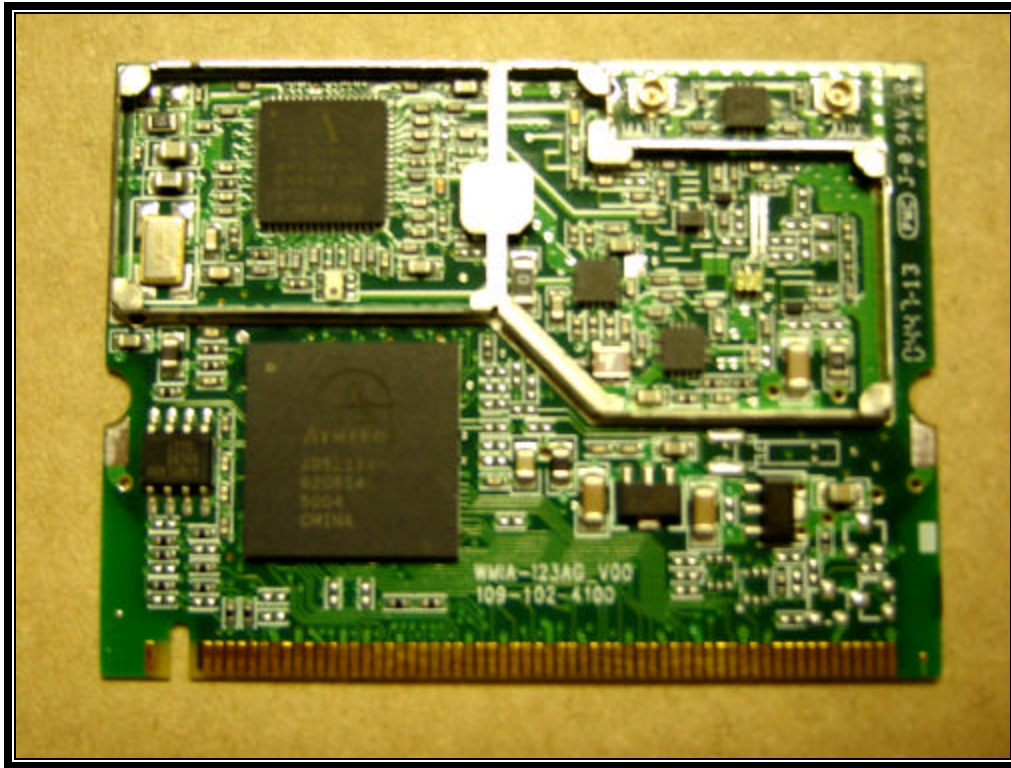
Photograph 37: WMA-154G-V01 802.11b/g Radio Card Front View with Shield Removed



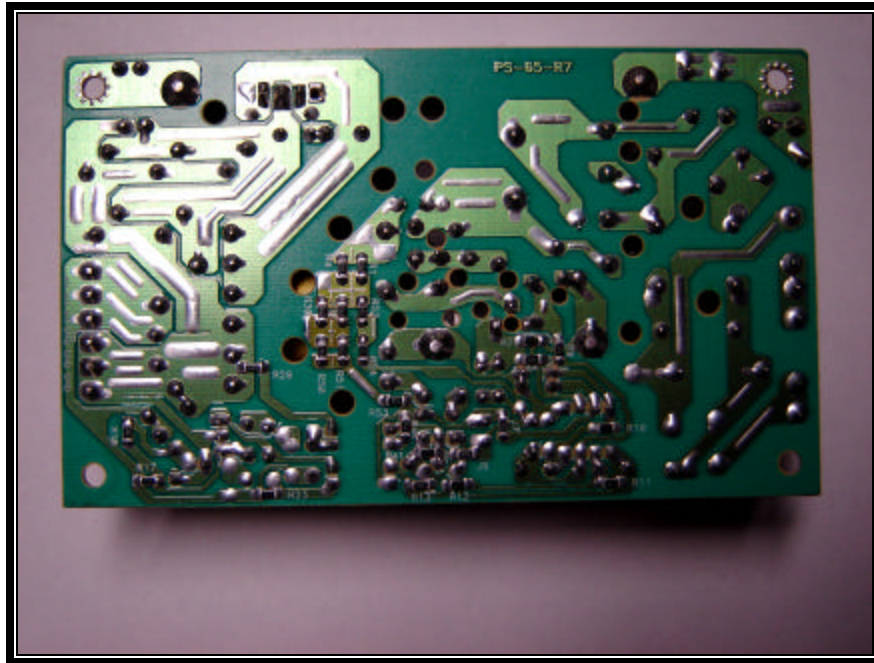
Photograph 38: WMIA-123AG 802.11a/b/g Radio Card Front View with Shield



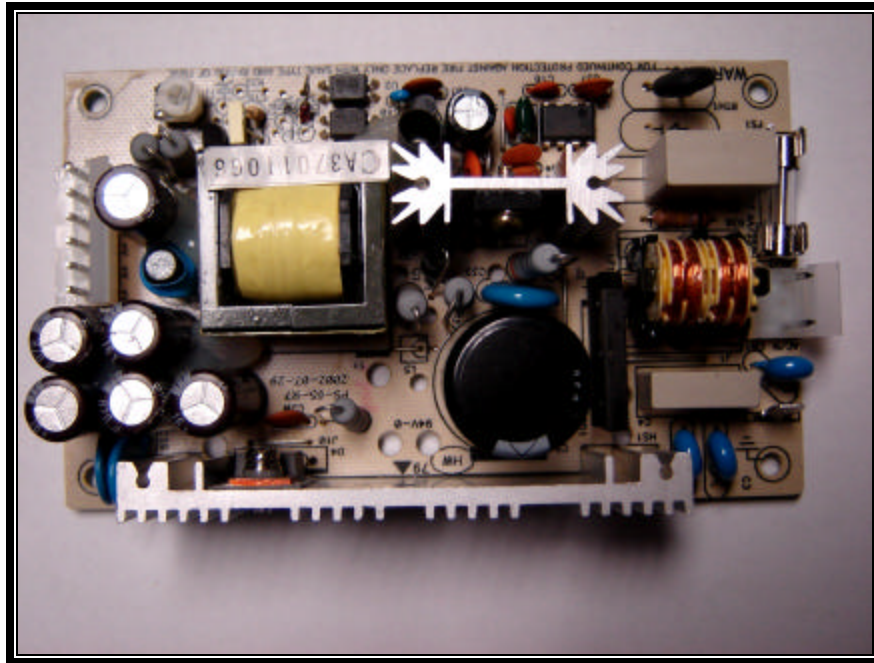
Photograph 39: WMIA-123AG 802.11a/b/g Radio Card Back View



Photograph 40: WMIA-123AG 802.11a/b/g Radio Card Front View with Shield Removed



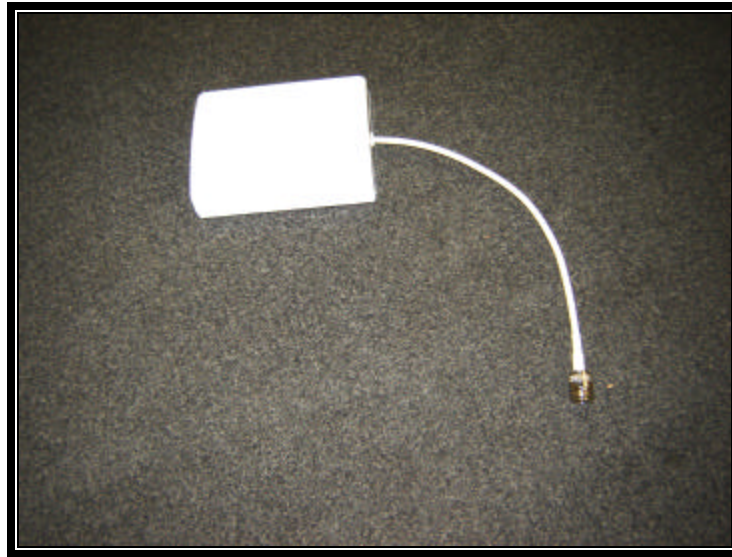
Photograph 41: Top of Power Supply PCB



Photograph 42: Bottom of Power Supply PCB



Photograph 43: MaxRad MYP24014 14 dBi Yagi Antenna



Photograph 44: Centurion CAF94180 8.5 dBi Patch Antenna



Photograph 45: Mobile Mark OD12-2400 12 dBi Collinear Omni Antenna



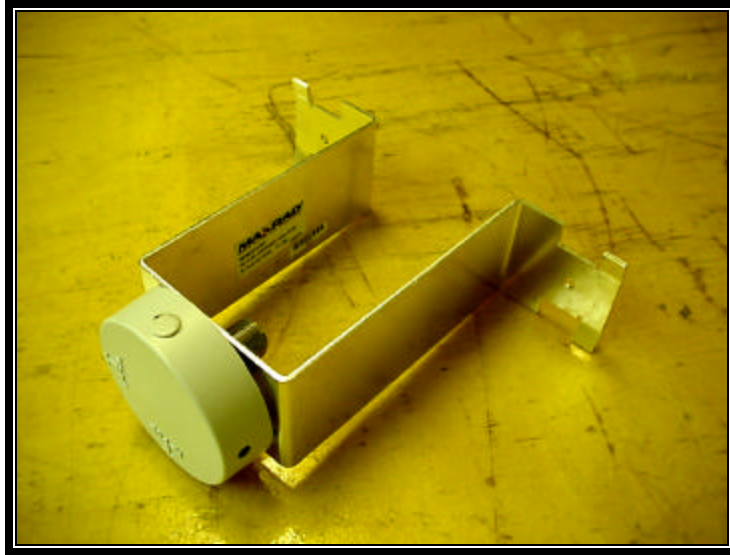
Photograph 46: Gabriel QF2-52 (5.25-5.85) Dish Antenna



Photograph 47: Pacific OD58-12 12 dBi Collinear Omni Antenna



Photograph 48: MaxRad MFB51510 10 dBi Collinear Omni Antenna



Photograph 49: MaxRad MP52010NF 10 dBi Panel Antenna



Photograph 50: Radiall R380600201 6 dBi Collinear Omni Antenna