

OMNII™ END-CAP WITH GPS & HSPA+ RADIO KIT INSTALLATION



Warning: The installation of any components must be performed using the appropriate anti-static devices. If unavailable, discharge static from your body by touching a grounded metallic object before opening any covers on the hand-held.

This instruction sheet describes how to install the GPS/HSPA+ Radio Kit and an end-cap kit.

The GPS Radio Kit contains the following:

- GPS radio with frame
- Torx T6 screws (x 3)
- Regulatory label 1004434

The GPS End-cap Kit includes:

- GPS end-cap with antenna attached.
- Torx T10 screws (x 4)

The tools listed below are needed for this procedure:

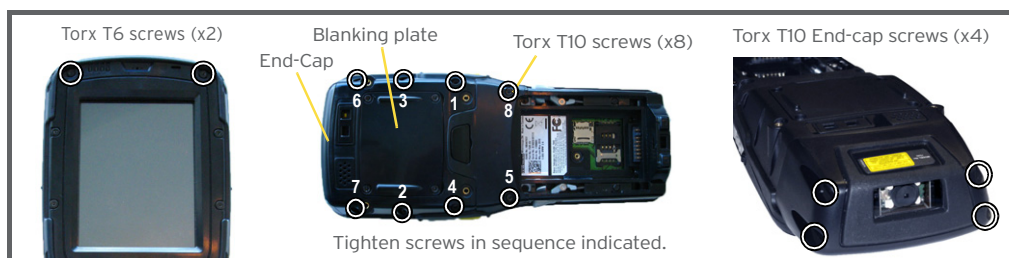
- Torx T10 screwdriver
- Torx T6 screwdriver
- small needle-nose pliers

1. Getting the Omnii Ready for GPS/HSPA+ Installation



Warning: Always disconnect the Omnii from all power sources (battery & A/C power) before servicing components.

Figure 1



- Remove the battery.
- Remove the blanking plate (four screws) using a Torx T10 screwdriver.
- Using a Torx T6 screwdriver, remove the two top-most screws on the front of the unit, just above the display.
- Remove the eight T10 screws holding the back cover to the main housing. The screws are illustrated in Figure 1.
- Carefully separate the back cover from the chassis without putting strain on the cables that are still connected.
- Locate the trigger/speaker cable at the top corner of unit. Grasp the wires in a bundle, and lift them **straight up** to disconnect the harness from the socket on the main logic board. Carefully disconnect any other cables.



Warning: Do not try to pry the harness from the socket, or you may dislocate the socket from the main logic board.

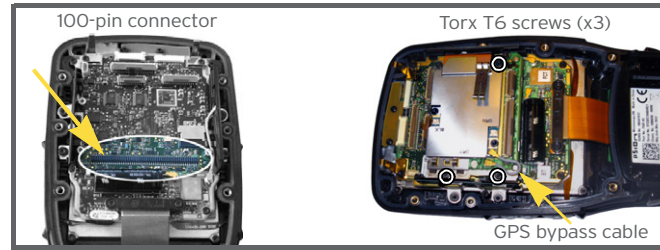


- Remove the existing end-cap (four screws) using a Torx T10 screwdriver.

2. Installing the GPS/HSPA+ Radio Module

- Align the 100-pin connector on the GPS radio module with the connector on the main logic board, and press down to attach it.
- Using a Torx T6 screwdriver, secure the GPS radio to the main logic board with 3 screws (M2x5 mm), torqued to 2.5 in-lb (0.28 N-m).

Figure 2



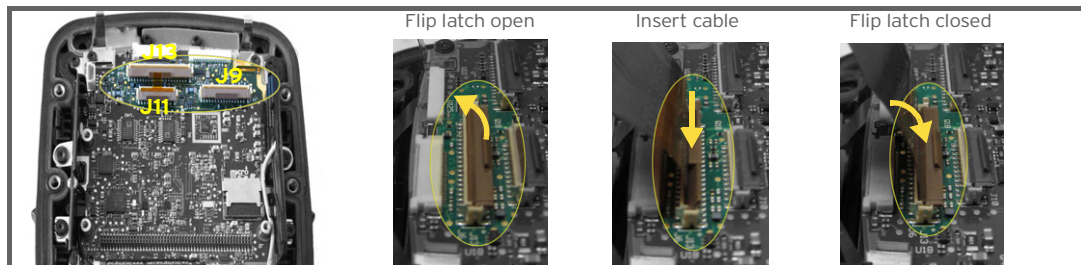
3. Attaching the GPS/HSPA+ End-Cap

- Run the cables (x3) and scanner/imager flex cable through the opening at the top of the expansion back cover.
- Using a Torx T10 screwdriver and the four screws provided (M3 x 6 mm), secure the GPS end-cap to the expansion back cover. Torque to 5 in-lb (0.56 N-m).

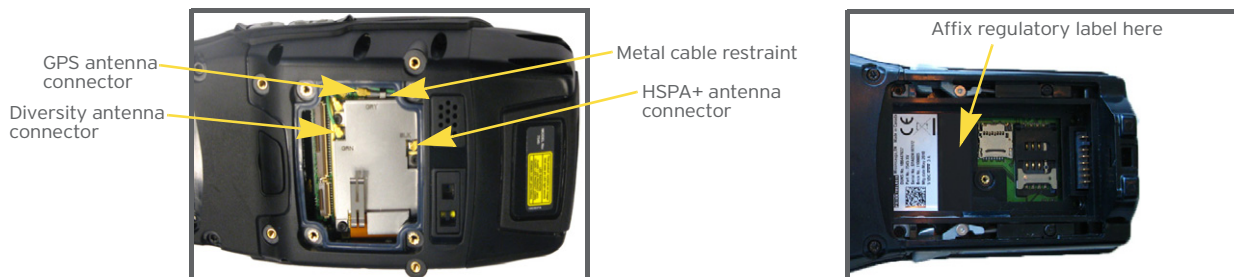
4. Reassembling Omnii

- Before reattaching the back cover, connect the pistol grip trigger/speaker wire harness to socket J11 on the main logic board. Connect the camera flex cable to socket J9 on the main logic board.
- If a scanner/imager flex cable is present in the end-cap, connect it to socket J13 on the main logic board as shown in Figure 3. If no cable has previously been installed in this socket, there may be a piece of “dummy” stiffener that must be removed before inserting the cable.
- Make certain the GPS bypass cable is connected (see Figure 2 on the previous page).

Figure 3



- Fit the back cover in place against the main housing, ensuring that no cables are caught in the seal.
- Using a Torx T10 screwdriver, tighten the eight screws (M3x6 mm) to a torque of 5 in-lb (0.56 N-m). Install the screws in the sequence shown in Figure 1 on the previous page to ensure a consistent seal around the opening.
- Using a Torx T6 screwdriver, replace the two screws (M2x8 mm) above the display on the front of the unit. Torque to 2.5 in-lb (0.28 N-m).
- Through the scanner pod opening, use small needle-nose pliers to route the *grey* GPS antenna cable under the two metal cable restraints on the left side of the GPS module.
- Press the grey GPS antenna connector into the socket labelled *GRY* on the left side of the unit. Snap it into place.
- Through the scanner pod opening, use small needle-nose pliers to route the *black* HSPA+ radio antenna cable under the metal cable restraint at the top of the radio module.
- Press the black HSPA+ antenna connector into the socket labelled *BLK* on the radio module. Snap it into place.



- Press the *green* diversity cable connector into the socket labelled *GRN*.
- Affix regulatory label 1004434.
- Reattach the blanking plate using a Torx T10 screwdriver and four screws (M3x5 mm) to 5 in-lb (0.56 N-m).
- Install the battery.