

#01_WLAN2.4GHz_802.11b 1Mbps_Left Side_0mm_Ch11;pod-Holster-ST6056

Communication System: 802.11b; Frequency: 2462 MHz; Duty Cycle: 1:1

Medium: MSL_2450_150918 Medium parameters used : $f = 2462$ MHz; $\sigma = 2.023$ S/m; $\epsilon_r = 52.623$; $\rho = 1000$ kg/m³

Ambient Temperature : 23.4 °C; Liquid Temperature : 22.4 °C

DASY5 Configuration

- Probe: EX3DV4 - SN3925; ConvF(7.54, 7.54, 7.54); Calibrated: 2015/5/27;
- Sensor-Surface: 1.4mm (Mechanical Surface Detection)
- Electronics: DAE3 Sn495; Calibrated: 2015/5/22
- Phantom: ELI v5.0; Type: QDOVA002AA; Serial: TP:1227
- Measurement SW: DASY52, Version 52.8 (8); SEMCAD X Version 14.6.10 (7331)

Configuration/Ch11/Area Scan (12x231x1): Interpolated grid: dx=1.200 mm, dy=1.200 mm
 Maximum value of SAR (interpolated) = 0.0737 W/kg

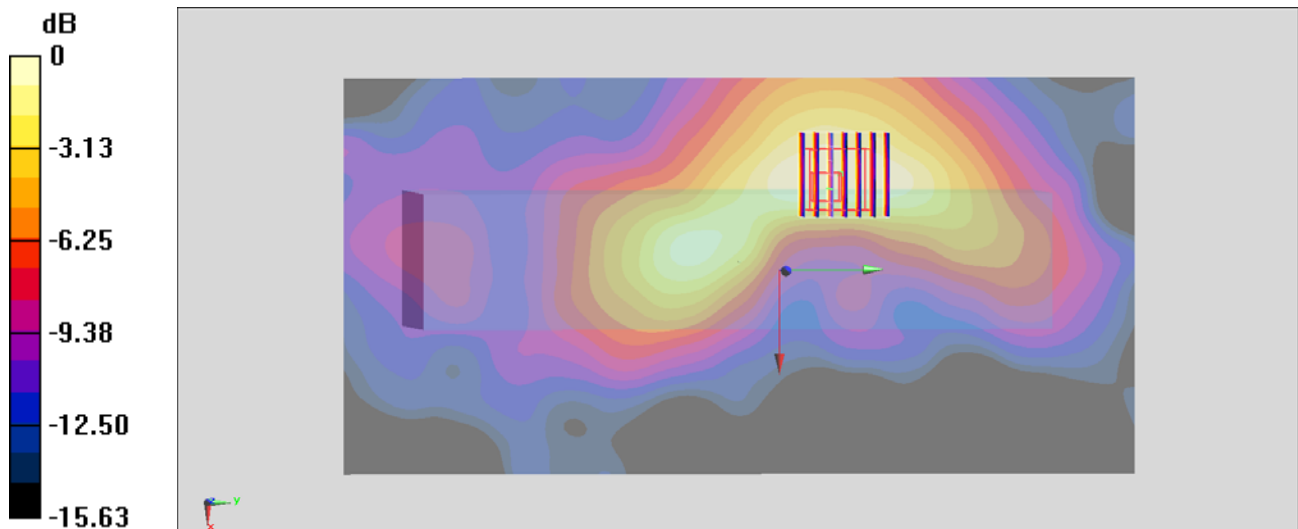
Configuration/Ch11/Zoom Scan (7x7x7)/Cube 0: Measurement grid: dx=5mm, dy=5mm, dz=5mm

Reference Value = 5.332 V/m; Power Drift = -0.08 dB

Peak SAR (extrapolated) = 0.0810 W/kg

SAR(1 g) = 0.043 W/kg; SAR(10 g) = 0.025 W/kg

Maximum value of SAR (measured) = 0.0659 W/kg



0 dB = 0.0659 W/kg = -11.81 dBW/kg

#02_WLAN5GHz_802.11a_6Mbps_Right Side_0mm_Ch36;pod-Holster-ST6056

Communication System: 802.11a; Frequency: 5180 MHz; Duty Cycle: 1:1.021

Medium: MSL_5G_150919 Medium parameters used: $f = 5180$ MHz; $\sigma = 5.415$ S/m; $\epsilon_r = 48.377$; $\rho = 1000$ kg/m³

Ambient Temperature : 23.4 °C; Liquid Temperature : 22.4 °C

DASY5 Configuration

- Probe: EX3DV4 - SN3925; ConvF(4.62, 4.62, 4.62); Calibrated: 2015/5/27;
- Sensor-Surface: 1.4mm (Mechanical Surface Detection)
- Electronics: DAE3 Sn495; Calibrated: 2015/5/22
- Phantom: ELI v5.0; Type: QDOVA002AA; Serial: TP:1227
- Measurement SW: DASY52, Version 52.8 (8); SEMCAD X Version 14.6.10 (7331)

Configuration/Ch36/Area Scan (141x261x1): Interpolated grid: dx=1.000 mm, dy=1.000 mm
 Maximum value of SAR (interpolated) = 0.0463 W/kg

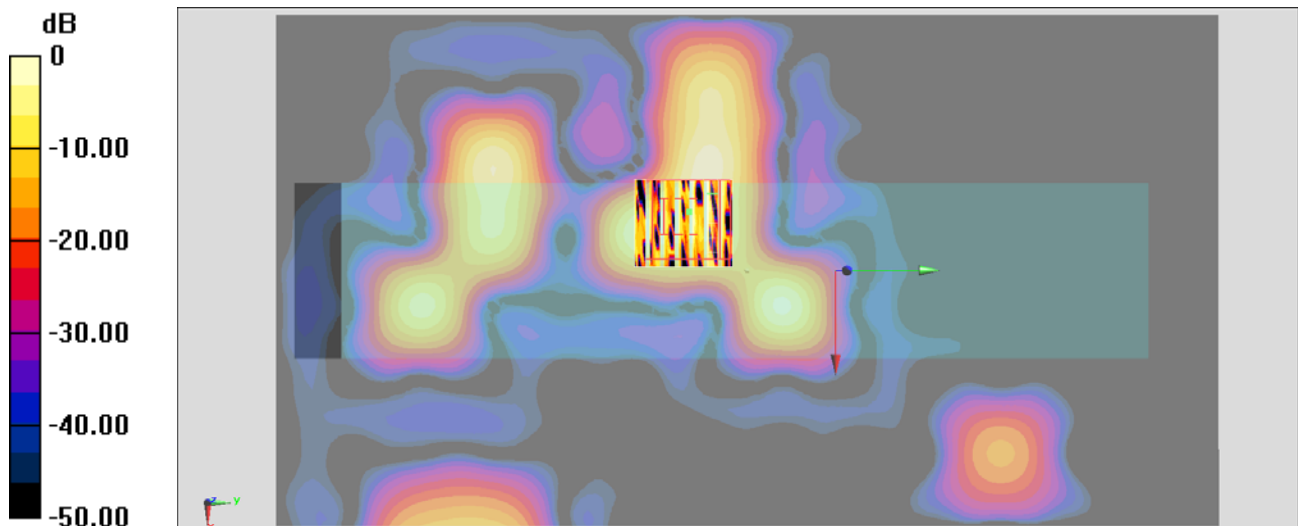
Configuration/Ch36/Zoom Scan (7x7x7)/Cube 0: Measurement grid: dx=4mm, dy=4mm, dz=1.4mm

Reference Value = 3.256 V/m; Power Drift = 0.15 dB

Peak SAR (extrapolated) = 0.188 W/kg

SAR(1 g) = 0.015 W/kg; SAR(10 g) = 0.00475 W/kg

Maximum value of SAR (measured) = 0.0468 W/kg



0 dB = 0.0468 W/kg = -13.30 dBW/kg

#03_WLAN5GHz_802.11a_6Mbps_Right Side_0mm_Ch52;pod-Holster-ST6056

Communication System: 802.11a ; Frequency: 5260 MHz;Duty Cycle: 1:1.021

Medium: MSL_5G_150919 Medium parameters used: $f = 5260$ MHz; $\sigma = 5.522$ S/m; $\epsilon_r = 48.227$; $\rho = 1000$ kg/m³

Ambient Temperature : 23.4 °C ; Liquid Temperature : 22.4 °C

DASY5 Configuration

- Probe: EX3DV4 - SN3925; ConvF(4.43, 4.43, 4.43); Calibrated: 2015/5/27;
- Sensor-Surface: 1.4mm (Mechanical Surface Detection)
- Electronics: DAE3 Sn495; Calibrated: 2015/5/22
- Phantom: ELI v5.0; Type: QDOVA002AA; Serial: TP:1227
- Measurement SW: DASY52, Version 52.8 (8); SEMCAD X Version 14.6.10 (7331)

Configuration/Ch52/Area Scan (141x261x1): Interpolated grid: dx=1.000 mm, dy=1.000 mm
 Maximum value of SAR (interpolated) = 0.0609 W/kg

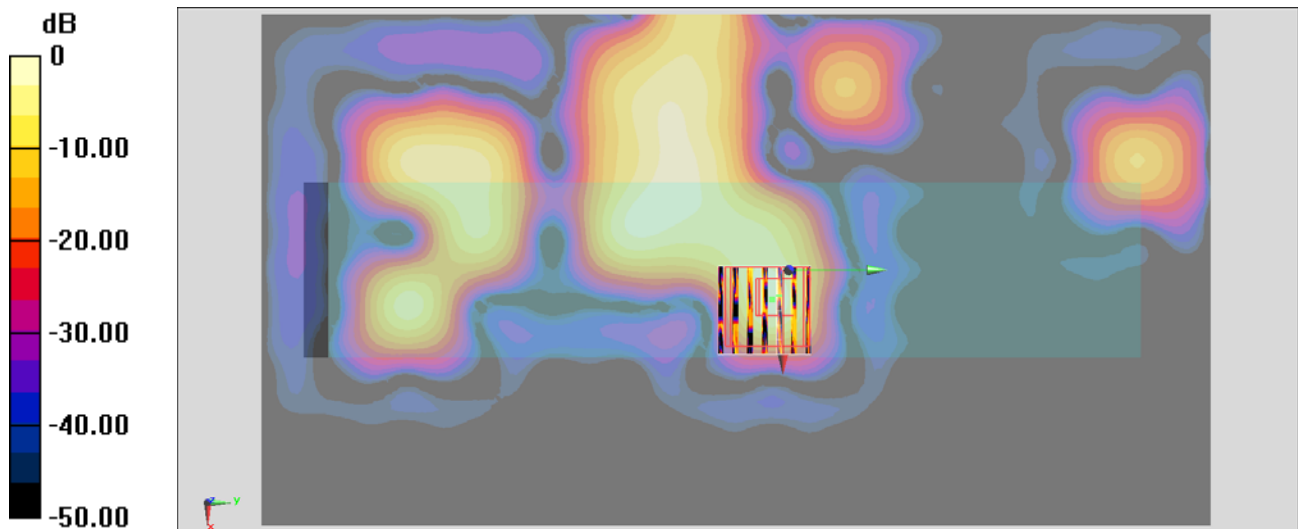
Configuration/Ch52/Zoom Scan (7x7x7)/Cube 0: Measurement grid: dx=4mm, dy=4mm, dz=1.4mm

Reference Value = 3.792 V/m; Power Drift = -0.11 dB

Peak SAR (extrapolated) = 0.0980 W/kg

SAR(1 g) = 0.020 W/kg; SAR(10 g) = 0.00348 W/kg

Maximum value of SAR (measured) = 0.0653 W/kg



0 dB = 0.0653 W/kg = -11.85 dBW/kg

#04_WLAN5GHz_802.11a 6Mbps_Right Side_0mm_Ch104;pod-Holster-ST6056

Communication System: 802.11a ; Frequency: 5520 MHz;Duty Cycle: 1:1.021

Medium: MSL_5G_150919 Medium parameters used: $f = 5520$ MHz; $\sigma = 5.862$ S/m; $\epsilon_r = 47.792$; $\rho = 1000$ kg/m³

Ambient Temperature : 23.4 °C ; Liquid Temperature : 22.4 °C

DASY5 Configuration

- Probe: EX3DV4 - SN3925; ConvF(4.16, 4.16, 4.16); Calibrated: 2015/5/27;
- Sensor-Surface: 1.4mm (Mechanical Surface Detection)
- Electronics: DAE3 Sn495; Calibrated: 2015/5/22
- Phantom: ELI v5.0; Type: QDOVA002AA; Serial: TP:1227
- Measurement SW: DASY52, Version 52.8 (8); SEMCAD X Version 14.6.10 (7331)

Configuration/Ch104/Area Scan (141x261x1): Interpolated grid: dx=1.000 mm, dy=1.000 mm
 Maximum value of SAR (interpolated) = 0.103 W/kg

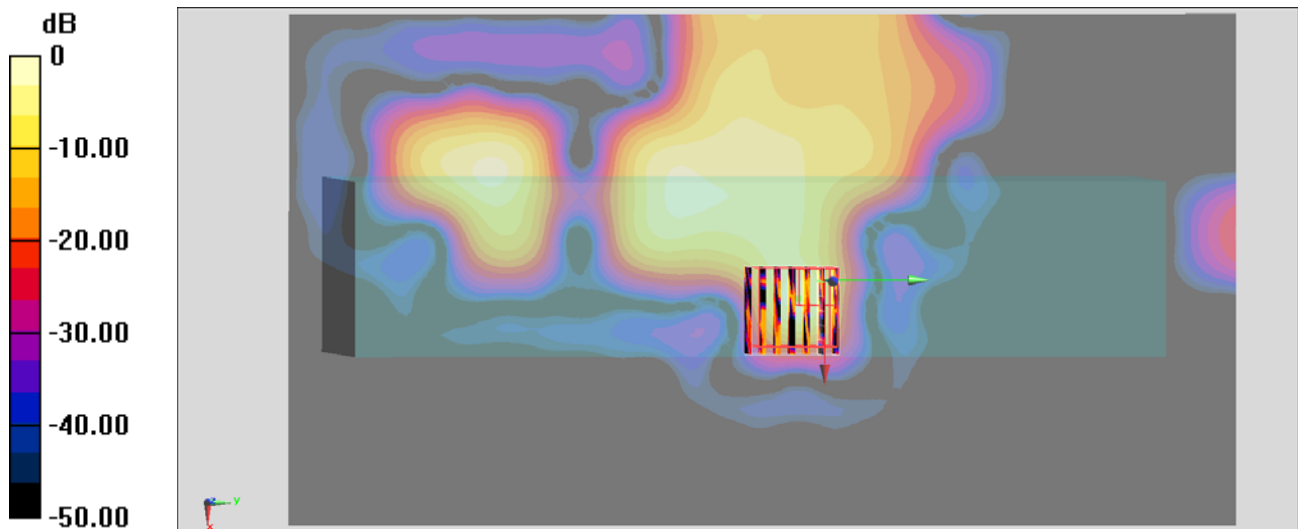
Configuration/Ch104/Zoom Scan (7x7x7)/Cube 0: Measurement grid: dx=4mm, dy=4mm, dz=1.4mm

Reference Value = 4.913 V/m; Power Drift = -0.06 dB

Peak SAR (extrapolated) = 0.218 W/kg

SAR(1 g) = 0.049 W/kg; SAR(10 g) = 0.00723 W/kg

Maximum value of SAR (measured) = 0.141 W/kg



0 dB = 0.141 W/kg = -8.51 dBW/kg

#05_WLAN5GHz_802.11a_6Mbps_Right Side_0mm_Ch149;pod-Holster-ST6056

Communication System: 802.11a ; Frequency: 5745 MHz;Duty Cycle: 1:1.021

Medium: MSL_5G_150919 Medium parameters used: $f = 5745$ MHz; $\sigma = 6.176$ S/m; $\epsilon_r = 47.443$; $\rho = 1000$ kg/m³

Ambient Temperature : 23.4 °C ; Liquid Temperature : 22.4 °C

DASY5 Configuration

- Probe: EX3DV4 - SN3925; ConvF(4.16, 4.16, 4.16); Calibrated: 2015/5/27;
- Sensor-Surface: 1.4mm (Mechanical Surface Detection)
- Electronics: DAE3 Sn495; Calibrated: 2015/5/22
- Phantom: ELI v5.0; Type: QDOVA002AA; Serial: TP:1227
- Measurement SW: DASY52, Version 52.8 (8); SEMCAD X Version 14.6.10 (7331)

Configuration/Ch149/Area Scan (141x261x1): Interpolated grid: dx=1.000 mm, dy=1.000 mm

Maximum value of SAR (interpolated) = 0.0395 W/kg

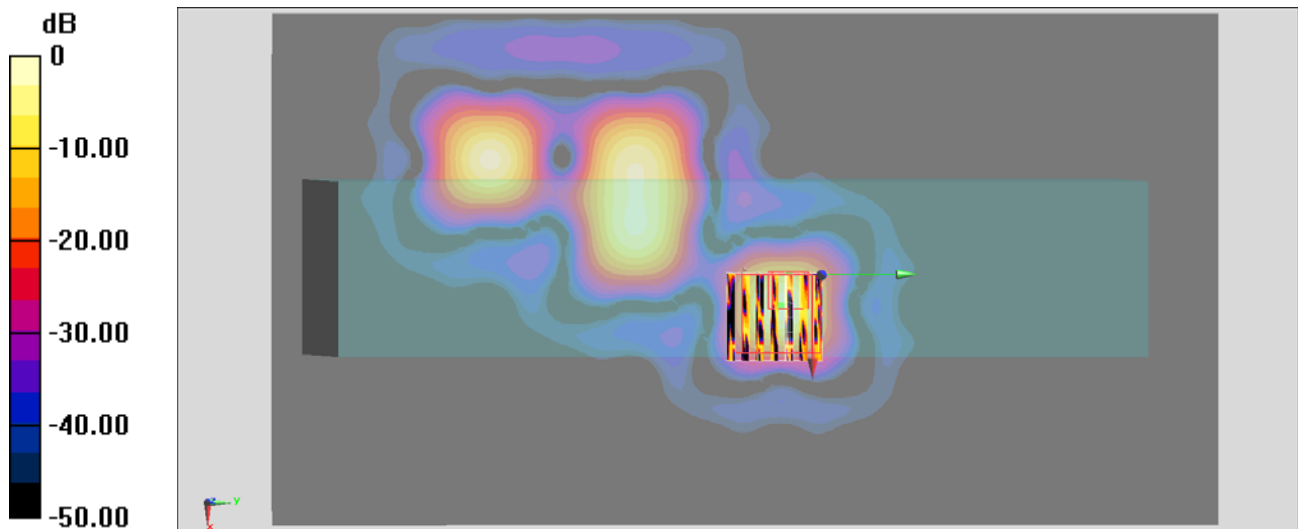
Configuration/Ch149/Zoom Scan (7x7x7)/Cube 0: Measurement grid: dx=4mm, dy=4mm, dz=1.4mm

Reference Value = 2.995 V/m; Power Drift = 0.15 dB

Peak SAR (extrapolated) = 0.0970 W/kg

SAR(1 g) = 0.015 W/kg; SAR(10 g) = 0.00197 W/kg

Maximum value of SAR (measured) = 0.0514 W/kg



0 dB = 0.0514 W/kg = -12.89 dBW/kg