

7545 5GHz Antenna

M. Tran
Mar 14, 2011

Antenna Assembly (includes plastic bracket) = 1004857
PCB Assembly (includes coax cable) = 1005313

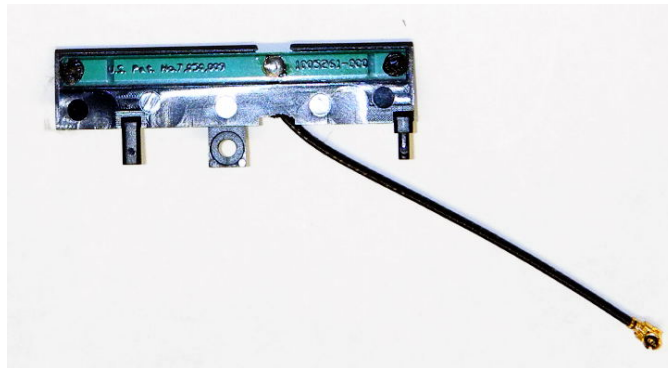


Figure 1: Antenna Assembly 1004857

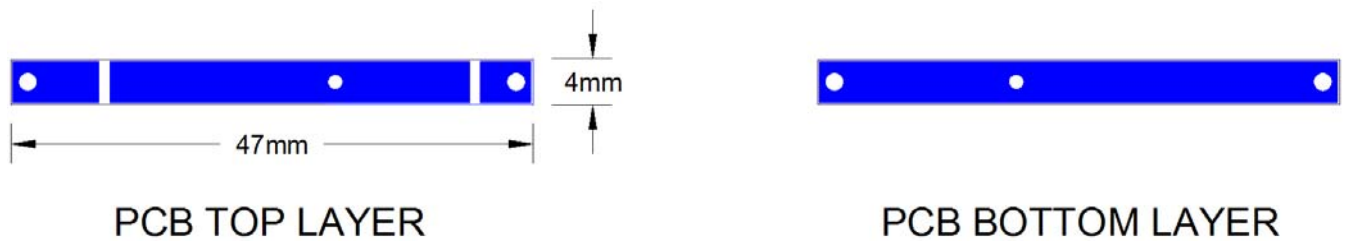

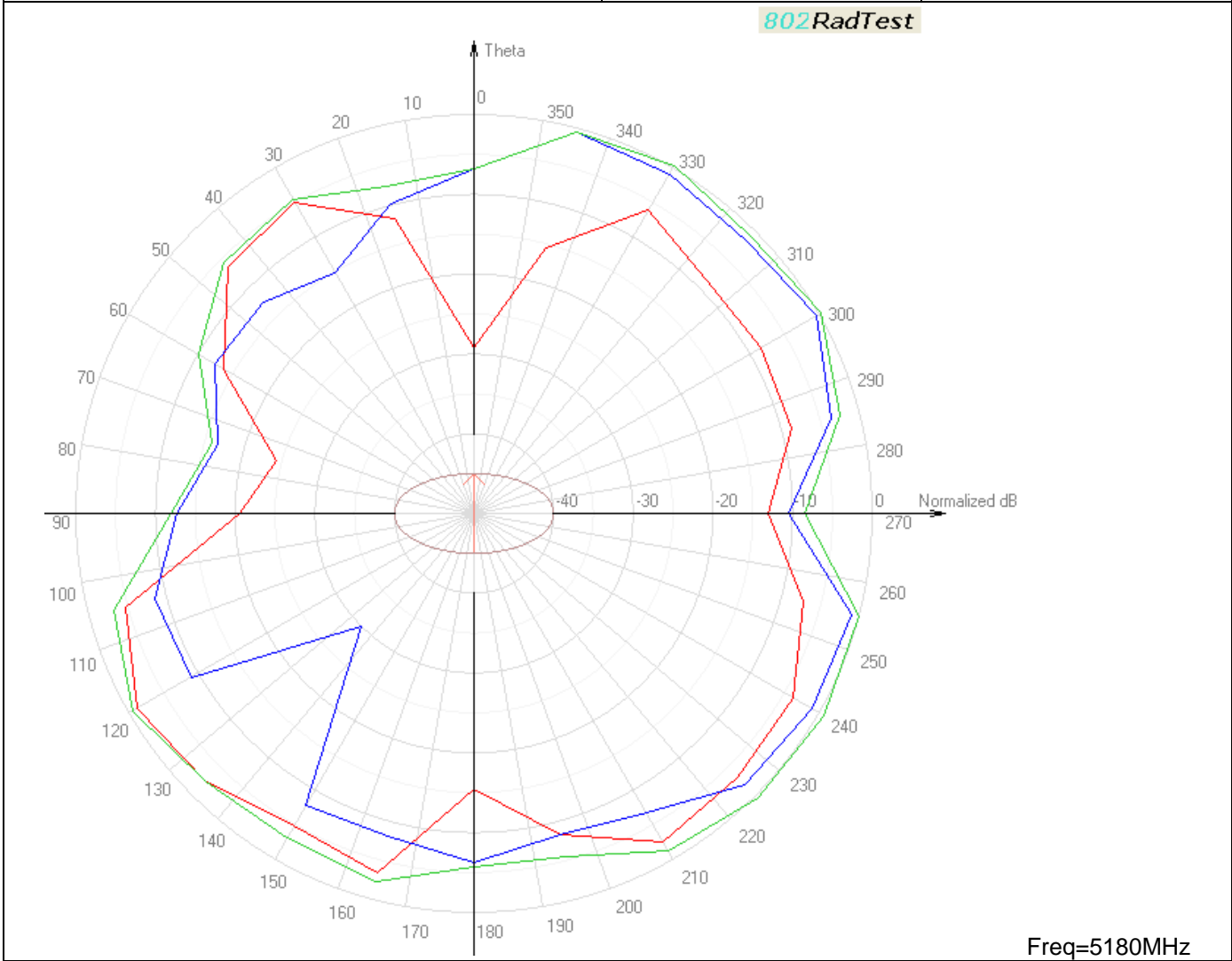


Figure 2: PCB Layout 1004651-500

Table 1: Specification

Parameter	Specification	Comments
Operating Frequency	5100-5840MHz	
Type/Gain	PCB/2.0dBi	
VSWR (inside terminal)	2.5:1 max	Valid for all terminal options
Connector	Hirose U.FL plug (female)	
Coaxial cable	1.32mm OD double shielded 73mm long	

<p>DUT configuration: WAN and GPS.</p> <p>Mounting & Orientation: DUT is mounted horizontally in free space test fixture (corresponds to Phi 0°). Theta 0° is with the top of DUT is pointed toward REF antenna.</p>	<p>Polarization Legends:</p> <p>RED = VER BLUE = HOR GREEN = VER + HOR</p>	<p>Theta Definition:</p> 
--	---	---



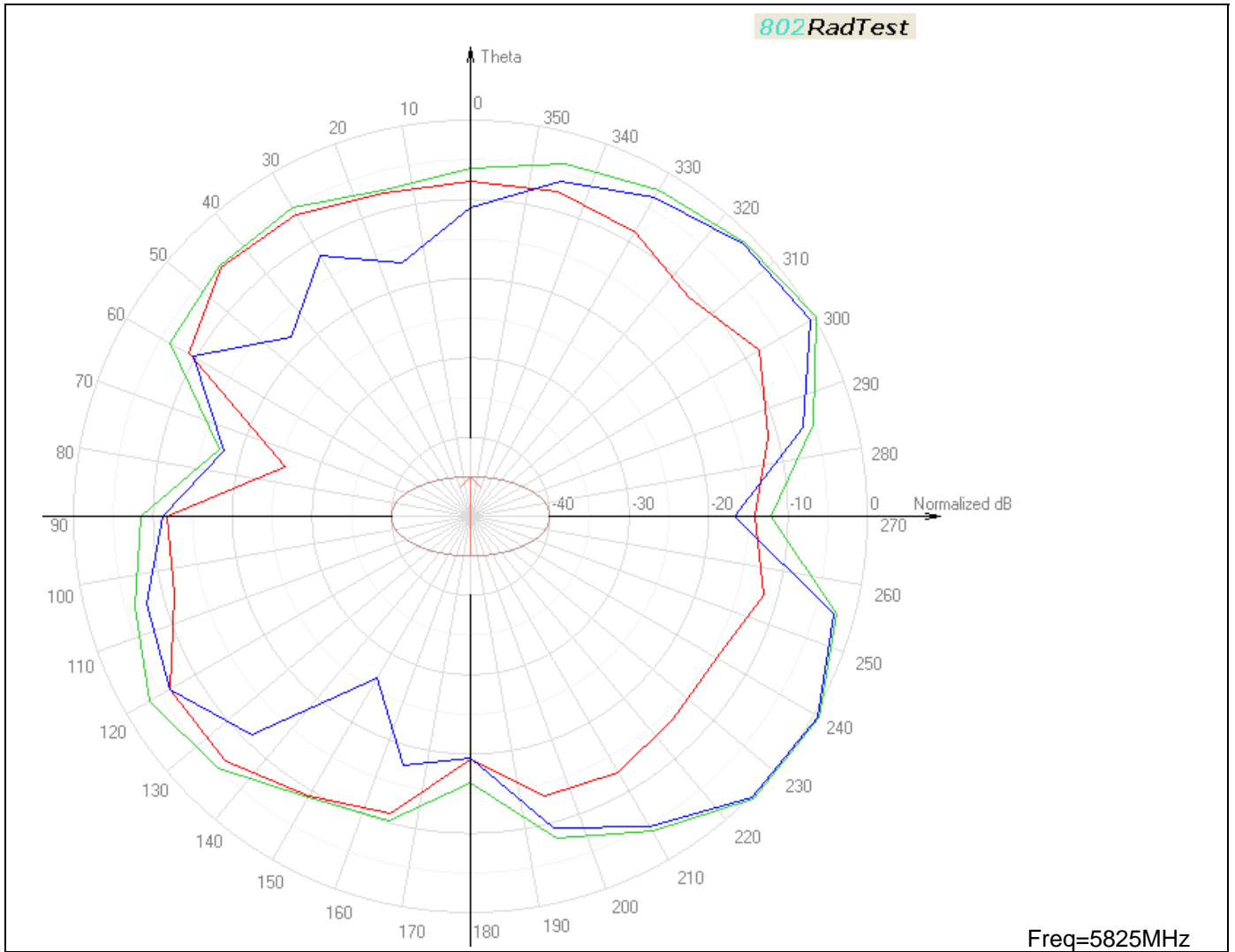


Figure 3: Measured Antenna Pattern @ Phi 0°