

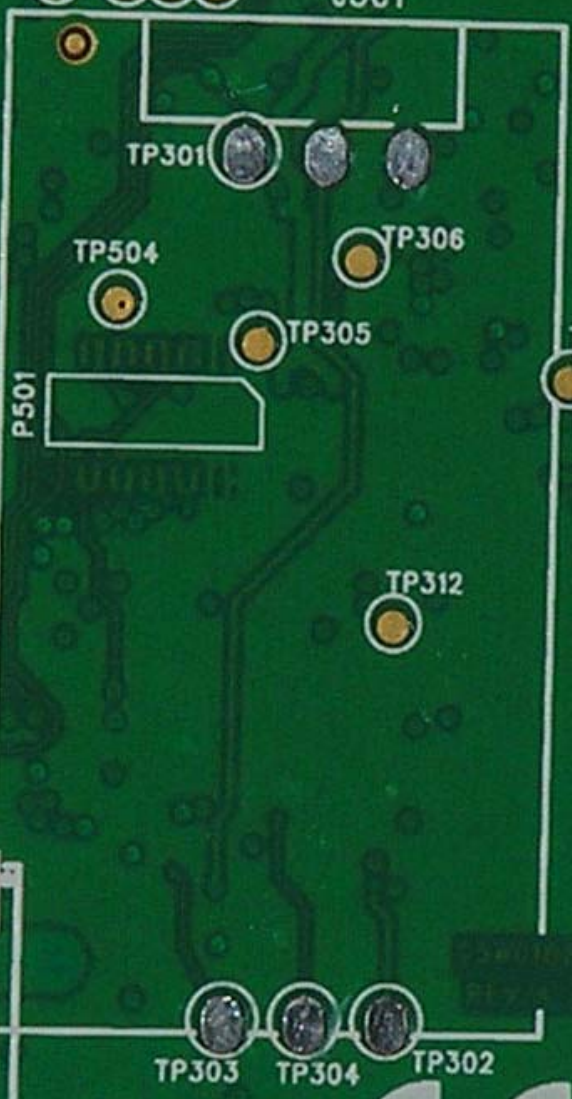






Rev  
\_78MG108M GSM ASY

TP316 TP310 TP311 TP315 TP314 TP309 TP307 TP308 J301 TP402



TP401 **enfora**<sup>®</sup> **CE** TP403  
MV11 94V-0 TP404  
0533 IC: 4160A-GSM0108  
FCC: MIVGSM0108 J401

