

## 3.9.1 Storing Batteries

Long term battery storage is not recommended. If storage is necessary:

- Always try to use a ‘first-in first-out’ approach to minimize storage time.
- Lithium-Ion batteries age much faster at elevated temperatures. Store batteries at temperatures between 0° C and 20°C.
- Always charge batteries to 40 to 60% before storing them. Batteries can be damaged by an over-discharge phenomenon that occurs when an empty battery is stored for a long period of time such that the cell voltage drops below a lower limit.
- To minimize storage degradation, recharge stored batteries to 40 to 60% every 4 or 6 months to prevent over-discharge damage.
- A ‘never used’ Li-Ion battery that has been stored for 3 years may have limited or no useful life remaining once put into service. Think of batteries as perishable goods.

## 3.10 Monitoring The Network Connection

If your hand-held is equipped with a wireless LAN radio, it will typically associate with the nearest access point. The radio signal quality meter in the taskbar indicates the relative strength of the communication link.

To access the radio signal icon from the keyboard:

- Press <BLUE> <0> to display the Start Menu.
- Choose `System Tray` from the menu.
- Use the <LEFT> and <RIGHT> arrow keys to highlight the radio signal icon in the taskbar.
- Press <ENTER> to display the wireless statistics box dialogue box.

***If you have a touchscreen:***

- Tap on the radio icon in the taskbar to display the wireless statistics dialogue box.



**Note:** *Moving in and out of the radio coverage area can have varying effects on a network session. At times, you may need to renew your connection by logging in again.*

## 3.11 Uploading Data In A Docking Station

The Combo Docking and Quad Docking peripherals allow the 7535 to link to an Ethernet network. They are typically used to upload transaction data to a server computer when a radio link is not available. When a 7530 is properly inserted in a docking station, a dock icon is displayed in the taskbar at the bottom of the 7530 screen. The 7530 also detects the presence of the Ethernet network. Review the documentation provided with the user application installed in your 7530 before performing data uploads.

## 3.12 General Maintenance

### 3.12.1 Caring For The Touchscreen

The top of the touchscreen is a thin, flexible polyester plastic sheet with a conductive coating on the inside. The polyester can be permanently damaged by harsh chemicals and is susceptible to abrasions and scratches. Using sharp objects on the touchscreen can scratch or cut the plastic, or crack the internal conductive coating.

The chemicals listed below must not come into contact with the touchscreen:

- mustard,
- sodium hydroxide,
- concentrated caustic solutions,
- benzyl alcohol, and
- concentrated mineral acids.

If the touchscreen is used in harsh environments, consider applying a disposable screen protector (PN HU6110). These covers reduce the clarity of the display slightly but will dramatically extend the useful life of the touchscreen. When they become scratched and abraded, they are easily removed and replaced.

### 3.12.2 Cleaning The 7530



**Important:** *Do not immerse the unit in water. Dampen a soft cloth with mild detergent to wipe the unit clean.*

- Use **only** mild detergent or soapy water to clean the hand-held unit.
- Avoid abrasive cleaners, solvents or strong chemicals for cleaning. The 7535 has a plastic case that is susceptible to harsh chemicals. The plastic is partially soluble in oils, mineral spirits and gasoline. The plastic slowly decomposes in strong alkaline solutions.
- To clean ink marks from the keypad and touchscreen, use isopropyl alcohol.



# WORKING WITH WINDOWS CE

# 4

4.1 Navigating In Windows CE And Applications . . . . .	61
4.1.1 Navigating Using A Touchscreen And Stylus . . . . .	61
4.1.2 Navigating Using The Keyboard . . . . .	62
4.2 Working With Files, Folders And Programs . . . . .	63
4.3 The Startup Desktop . . . . .	64
4.3.1 The Desktop Icons . . . . .	65
4.3.2 The Taskbar . . . . .	66
4.3.2.1 Using The Taskbar . . . . .	66
4.3.2.2 Customizing The Taskbar . . . . .	67
4.4 The Start Menu . . . . .	68
4.4.1 The Desktop . . . . .	68
4.4.2 Security Settings . . . . .	69
4.4.3 The System Tray . . . . .	70
4.4.4 The Task Manager . . . . .	71
4.4.5 Cycle Tasks . . . . .	71
4.4.6 Power Info . . . . .	71
4.4.7 Programs . . . . .	72
4.4.8 Settings . . . . .	73
4.4.9 Run . . . . .	74
4.4.10 Shutdown . . . . .	75
4.5 Using A Dialogue Box . . . . .	76



## 4.1 Navigating In Windows CE And Applications

Graphic user interfaces like Windows CE for portable devices and desktop Windows (2000, XP, etc.) utilize ‘point and click’ navigation. An equivalent keyboard shortcut is also available for every ‘point and click’ action.

Windows CE supports the same ‘point and click’ user interface and keyboard shortcuts as desktop Windows with one difference – the ‘point and click’ action is accomplished using a touchscreen rather than a mouse. Actions can be performed using any combination of keyboard shortcuts or touchscreen tapping (provided your 7530 is equipped with a touchscreen).

### 4.1.1 Navigating Using A Touchscreen And Stylus



**Note:** *If the touch screen is not registering your screen taps accurately, the touchscreen may need recalibration. Refer to “Calibrating The Touchscreen” on page 41.*

A touchscreen is an **optional** feature. A 7530 equipped with a touchscreen has a *stylus* – a pointing tool that looks like a pen – stored in a slot at the top of the 7530. The stylus is used to select objects on the touchscreen.



**Note:** *To prevent damage to the touchscreen, use only the stylus (pen) supplied with your 7530.*

To open a file, launch an applet or open a folder:

- Double-tap the stylus on the appropriate icon.

## 4.1.2 Navigating Using The Keyboard

If your 7530 has a standard screen (rather than a touchscreen), choosing icons and navigating dialogue boxes, displaying the desktop, and so on requires keyboard input. If your unit has already been fully configured and your application is launched at startup, you'll have little need for keyboard navigation.

Operation	Key or Key Combination
Switch between active applications	<ALT> <TAB>
Open task manager	<ALT> <ESC>
Move the cursor	Arrow keys
Open file, folder or icon	<ENTER>
Exit & Save	<ENTER>
Close/Exit & Do Not Save	<ESC>
Navigate Dialogue Boxes	<TAB> To move cursor up <SHIFT> <TAB> To display the contents of the next 'tab' in a dialogue box <CTRL> <TAB>
Select Radio Button/Press Button	<SPACE>
Go to Start Menu	<BLUE><0>

Table 4.1 Keyboard Navigation

Keep in mind that unlike a desktop computer, the 7530 does not support key chording (pressing two keys at the same time). You must press one key followed by the next in sequence.

Refer to “Working With Files, Folders And Programs” on page 63 for additional details about keyboard navigation.



## 4.2 Working With Files, Folders And Programs

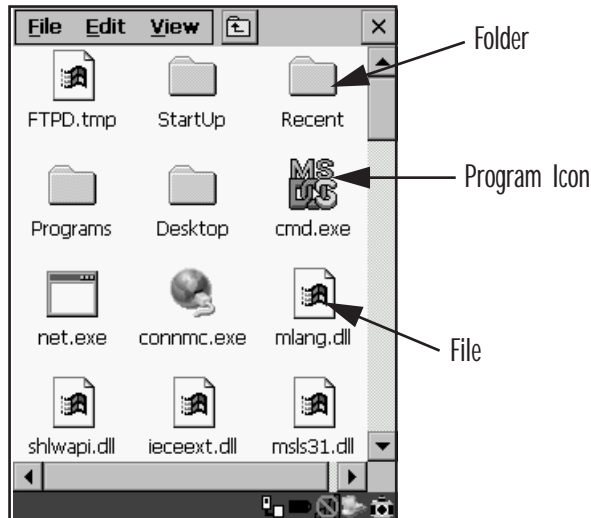


Figure 4.1 Working With Windows Icons

- Use the arrow keys to highlight the icon you want to open or launch.
- Press <ENTER>.

***If you have a touchscreen:***

- Double-tap on the appropriate icon – either a folder icon, a program icon or a file icon – to open or launch your selection.

## 4.3 The Startup Desktop

When the 7530 boots up, the startup desktop (shell) is displayed. Any applications stored in the Startup folder start up immediately.



**Note:** *The startup folder is located in \Windows\StartUp and \Flash Disk\StartUp.*

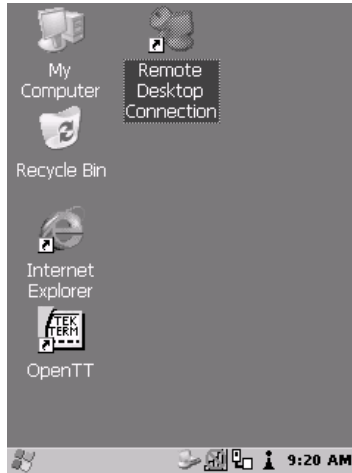


Figure 4.2 The 7530 Startup Desktop

To access desktop icons:

- Use the arrow keys to highlight the icon, and press <ENTER> to launch the highlighted icon.



**Note:** *If the arrow keys do not highlight the desktop icons, the desktop may not be selected. Press <BLUE> 0 (zero) to display the Start Menu, and select Desktop. Now the desktop will be “in focus” and the arrow keys will highlight the icons.*

**If you have a touchscreen:**

- Tap on the icon to open a window or, in the case of an application icon, launch an application.

## 4.3.1 The Desktop Icons

The icons displayed in the startup desktop operate in much the same way as those displayed on any standard PC desktop that is running Windows®.

### My Computer

Choosing this icon displays the contents of your 7530 computer. If you're not sure how to work with the files, folders and programs displayed, refer to "Working With Files, Folders And Programs" on page 63.

### Recycle Bin

This option temporarily contains items that were deleted, allowing you to either permanently delete or restore these items.

### Internet Explorer

Choosing this icon launches Internet Explorer – a standard Windows CE version. Keep in mind that your supervisor will need to set up access using the Internet Options and the Network and Dial-up Connections icons in the Control Panel.

### Remote Desktop Connection

This option allows your 7530 to communicate with a remote desktop PC. "Remote Desktop Connection" on page 83 provides a website with step-by-step instructions.

## 4.3.2 The Taskbar

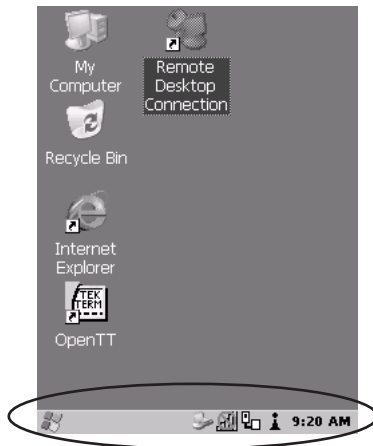


Figure 4.3 The Taskbar

The 7530 is equipped with a taskbar at the bottom of the screen. It displays icons through which you can view the battery capacity and radio signal quality of your unit. If the hand-held is attached to a charger, cradle, docking station or PDM, an associated icon is displayed. In addition, the taskbar displays the application(s) currently running on your unit and the security level assigned to your 7530.

The taskbar also displays active modifier keys – <SHIFT>, <ALT>, <CTRL>, <BLUE> and <ORANGE>. Keys that have been locked “on” are displayed in *uppercase* letters. For example, if you press the <CTRL> key twice to lock it “on”, it is displayed as CTRL KEY in the taskbar.

### 4.3.2.1 Using The Taskbar

- Press <BLUE> <0> to display the Start Menu.
- Type <Y> to choose System Tray from the menu.
- Use the arrow keys to highlight the icon in the taskbar about which you’d like more information.
- Press <ENTER> to display the appropriate dialogue box.

#### ***If you have a touchscreen:***

- Using the stylus, tap on the indicator you want to view – the battery icon for example – to display a dialogue box listing the current battery capacity information.

### 4.3.2.2 Customizing The Taskbar

To customize the taskbar so that it displays only those icons you require:

- Press <BLUE> <0> (zero) to display the Start Menu.
- Highlight the Settings option, highlight Taskbar... in the sub-menu, and press <ENTER>.

The Taskbar and Start Menu dialogue box is displayed.

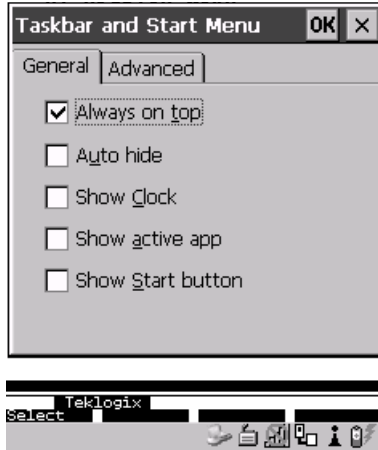


Figure 4.4 Taskbar And Start Menu Settings

- Under the General tab, highlight the options you want to activate, and press the <SPACE> key to select them. A check mark indicates active items.

***If you have a touchscreen:***

- Tap the stylus on the items you want to activate or deactivate. The check mark indicates active items.

## 4.4 The Start Menu

**Note:** Some of the Start Menu items may be disabled based on the 7530's current security settings.

The Start Menu lists the operations you can access and work with. It is available from the startup desktop or from within any application.

To display the menu:

- Press <BLUE> <0> (zero).

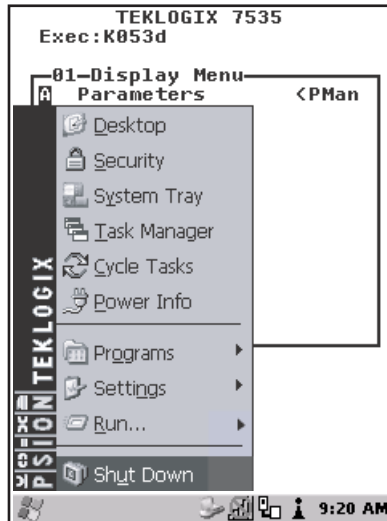


Figure 4.5 Start Menu

- Use the arrow keys to highlight a menu item, and press <ENTER>, **or**

If the menu item has an underlined character:

- Type the underlined alpha character – for example, to display the Power Info dialog box, type the letter *p*.

**If you have a touchscreen:**

- Tap on the Windows® Start button in the taskbar. Tap on the item in the menu with which you want to work.

### 4.4.1 The Desktop

Choosing the Desktop option from the Start Menu displays the 7530 desktop.

## 4.4.2 Security Settings

Choosing the security option from the Start Menu displays a dialogue box in which you can define the access level for the 7530 – Teklogix, Supervisor or User.



Figure 4.6 Security Levels

### Security Level

These security levels define the options accessible to the operator in the Start Menu and the taskbar. When you change security levels, you'll need to enter the appropriate password in the Password textbox. The security level is represented by an icon in the shape of a lock in the taskbar.

### Changing A Password



**Note:** *Keep in mind that this is the same password as that assigned through the Password control panel applet. Refer to “Control Panel Icons” on page 84.*

To assign a password:

- Choose a security level, and enter the existing password in the Password field
- Choose the Set Password button.

A dialogue box labelled Password Properties is displayed.

- Type the new password in the Password: text box
- In the Confirm Password: text box, retype the new password.

## Configuring Security

Choosing the Configure button displays the Configure Security dialogue box.



Figure 4.7 Configuring Security

This dialogue box allows you to determine which security levels will have an associated icon displayed in the taskbar. By default, a security icon is not displayed for user-level security.

### 4.4.3 The System Tray

The `System Tray` option allows access to the icons in the taskbar at the bottom of the screen. The taskbar displays indicators such as a battery capacity gauge and the security level. These indicators are attached to dialogue boxes that provide additional information.

- Choose `System Tray` from the Start Menu.

When `System Tray` is chosen, the taskbar icons become accessible. To display the dialogue box attached to an icon:

- Use the arrow keys to highlight an icon – for example – the security icon.
- Press <ENTER> to display the security level dialogue box.

#### *If you have a touchscreen:*

- Tap on the icon with which you want to work. The associated dialogue box is displayed.



## 4.4.4 The Task Manager

The **T**ask Manager option allows you to switch to another task or to end an active task. To display the task manager window:

- Press <BLUE><0><T>, *or*
- Press <ALT> <ESC>.

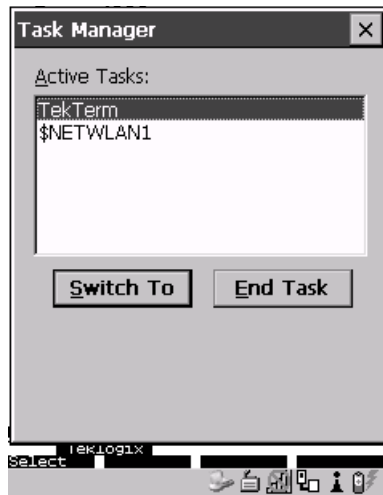


Figure 4.8 Task Manager

## 4.4.5 Cycle Tasks

When **C**ycle Tasks is selected (and the Task Manager is not open), you can cycle through active applications. To choose this option:

- Press <BLUE><0>, and type <C>, *or*
- Press <ALT> <TAB>.

## 4.4.6 Power Info

Selecting **P**ower Info from the Start Menu displays the Power Properties dialogue box. This dialogue box indicates the remaining charge capacity of the battery.

## 4.4.7 Programs

With **Programs** highlighted, press the <RIGHT> arrow key to display a sub-menu of options.

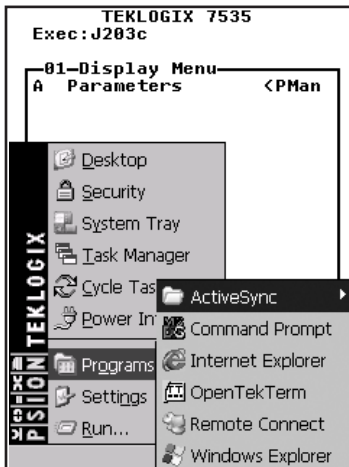


Figure 4.9 Program Sub-Menu

This sub-menu allows you to choose ActiveSync and Command Prompt, and you can access the Internet Explorer, installed applications (e.g., Open Tekterm), Remote Desktop Connection or Windows Explorer.

### ActiveSync®

This option allows you to connect to another device using ActiveSync.

### Command Prompt

Command Prompt is used to access the DOS command prompt. At the prompt, you can type DOS commands such as *dir* to display all the directories in the drive.

### Internet Explorer

The 7530 is equipped with Microsoft® Internet Explorer consistent with all Windows CE devices on the market. You can access the Internet Options icon through the Start Menu under **Settings**>**Control Panel** or by double-tapping on the desktop icon labelled My Computer and then, double-tapping on the Control Panel icon.

## Windows Explorer

Windows Explorer installed on your 7530 is consistent with all Windows CE.NET 4.2 devices. You can access this option either from the Start Menu under `Programs>Windows Explorer`.

## Remote Desktop Connection

Remote Desktop Connection is a 7530 application used to connect to a Windows Terminal Server so that you can run a “session” on the Server machine using the 7530 (Windows CE device). “Remote Desktop Connection” on page 83 provides a website with details about this option.

### 4.4.8 Settings

With `Settings` highlighted, pressing the <RIGHT> arrow key displays a sub-menu of options, including Control Panel, Network and Dial-up Connections and Taskbar and Start Menu settings.

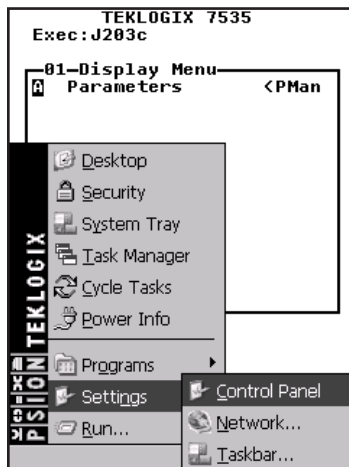


Figure 4.10 Settings Sub-Menu

## Control Panel

The Control Panel contains applets used to configure hardware, the operating system and the shell. If your 7530 is running with the Psion Teklogix Tekterm application or another application, additional configuration applets may appear in the Control Panel.

## Run

### Network And Dial-Up Connections

The Network and Dial-up Connections window allows you to configure the 7530 radio or execute an existing configuration. Refer to “Configuring An IEEE 802.11 Radio Installed In The 7530” on page 18 for radio setup details.

### Taskbar And Start Menu

The Taskbar and Start Menu option displays a dialogue box in which you can customize the taskbar, choosing which options will be displayed. Refer to “Customizing The Taskbar” on page 67 for additional details about this option.

## 4.4.9 Run

Choosing the Run option from the Start Menu displays a dialogue box in which you can enter the name of the program, folder or document you want to open or launch.



Figure 4.11 Run Dialogue Box

## 4.4.10 Shutdown

With **Shut**down highlighted, pressing the <RIGHT> arrow key displays a sub-menu of options, including Suspend, Warm Reset and Cold Reset.

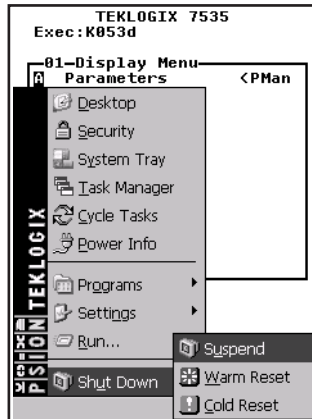


Figure 4.12 Shutdown Sub-Menu



**Note:** This menu varies slightly depending on the security level chosen. When the 7530 is set to **User** level, the **Shut**down option is replaced by **Su**spend. A sub-menu is not available.

At **Teklogix** security level, an additional option is available in the sub-menu – **B**ootloader. This option behaves like cold-reset, except that the 7530 starts **Boot**loader rather than Windows CE.

### Suspend

The **Su**spend option suspends the 7530 immediately – this is equivalent to turning the hand-held off.

### Warm Reset

The **Wa**rm Reset option resets the 7530, leaving all saved files and (registry) settings intact. Any unsaved data is lost.

### Cold Reset

The **Co**ld Reset option resets the 7530. Any files not stored in permanent memory are lost. However, the registry settings are saved.

## 4.5 Using A Dialogue Box

A dialogue box (like the samples in Figure 4.13) appears when you need to make selections and enter further information.

You can move between dialogue items by tapping on them, or by pressing the arrow keys and the <TAB> key. (<SHIFT> <TAB> moves the cursor backwards.)

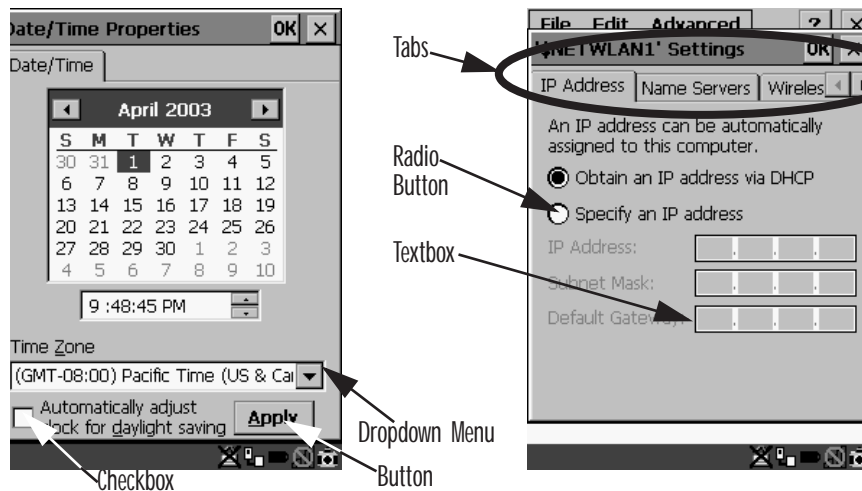


Figure 4.13 Dialogue Boxes



**Note:** If your unit is *equipped with a touchscreen*, you can use the stylus to tap on an element in a dialogue box to select or deselect it, display dropdown menu items, save your selections, and so on.

Dialogue boxes contain one or more of the following elements:

**Tab:** A tab separates different elements of a dialogue box. Press the <TAB> key until a tab in the dialogue box is highlighted. To display adjoining tabs, press the <RIGHT> or <LEFT> arrow key. **To display the information in the next tab from anywhere in the window, press <CTRL> <TAB>.**

**Textbox:** A textbox requires that you type information. Press the <TAB> key to highlight the textbox and then type the appropriate information.

**Dropdown:** This type of menu is identified by up and down arrows next to the dropdown menu to indicate that additional options are available. Press the <TAB> key to highlight the menu, and use the arrow keys on your keyboard to cycle through the options.

**Checkbox:** This box allows you to select or deselect an option. To select or deselect a checkbox, press the <TAB> key to highlight the checkbox, and press the <SPACE> key to select (√) or deselect it.

**Radio buttons:** These buttons allow you to choose from a number of options. For example, in the sample screen in Figure 4.13 on page 76 you can choose to 'Obtain an IP address via DHCP' or 'Specify an IP address'. Press the <TAB> key to highlight a radio button option, and then select a radio button by pressing the arrow keys to highlight the appropriate option.

**Buttons:** This type of button allows you to 'Save', 'Delete' and so on the options you've chosen in a dialogue box. Use the <TAB> key to highlight the button you want to use. Press the <ENTER> key to activate it.

**Saving Your Choices:** Once you've made all your changes, press the <ENTER> key to save your changes and exit the window.



**Note:** *A dialogue box item that is displayed in grey text indicates that it is not currently available.*





# CONFIGURATION

# 5

5.1 Remote Desktop Connection . . . . .	83
5.2 Pocket PC Compatibility . . . . .	83
5.3 The Control Panel . . . . .	83
5.4 Control Panel Icons . . . . .	84
5.5 Basic Setup . . . . .	88
5.5.1 Display Properties . . . . .	88
5.5.1.1 Display Contrast . . . . .	88
5.5.1.2 Display Backlight . . . . .	89
5.5.1.3 Display Appearance . . . . .	91
5.5.2 Keyboard Properties . . . . .	92
5.5.2.1 Key Repeat. . . . .	92
5.5.2.2 Keyboard Backlight . . . . .	93
5.5.2.3 Keyboard One Shot Modes . . . . .	94
5.5.2.4 Keyboard Macro Keys . . . . .	95
5.5.2.5 Unicode Mapping . . . . .	97
5.5.3 Volume And Sound Properties . . . . .	99
5.5.3.1 Volume Adjustments . . . . .	99
5.5.4 Power Management Properties . . . . .	100
5.5.4.1 Battery Capacity . . . . .	100
5.5.4.2 Power Saving Schemes . . . . .	101
5.5.4.3 Suspend Threshold. . . . .	102
5.5.4.4 Charger Details . . . . .	103
5.5.5 Stylus Properties . . . . .	103
5.5.5.1 Setting Double-Tap Sensitivity . . . . .	104
5.5.5.2 Touchscreen Calibration . . . . .	104
5.5.6 Certificate Assignment . . . . .	105
5.7 Scanner Properties Setup . . . . .	118
5.7.1 Scanner Options . . . . .	118
5.7.2 Bar Codes . . . . .	121
5.7.2.1 Code 39 Settings. . . . .	122
5.7.2.2 Code 128 Settings . . . . .	124

5.7.2.3	EAN 13 Settings . . . . .	125
5.7.2.4	EAN 8 . . . . .	126
5.7.2.5	UPC And EAN Settings . . . . .	127
5.7.2.6	UPC A Settings. . . . .	127
5.7.2.7	UPC E Settings. . . . .	127
5.7.2.8	Codabar. . . . .	128
5.7.2.9	Code 93. . . . .	128
5.7.2.10	Code 11 . . . . .	128
5.7.2.11	Interleaved 2 of 5 . . . . .	129
5.7.2.12	MSI Plessey . . . . .	129
5.7.2.13	Discrete 2 of 5 . . . . .	129
5.7.2.14	IATA 2 of 5 . . . . .	130
5.7.2.15	Postal: Australian . . . . .	130
5.7.2.16	Postal: Japanese. . . . .	130
5.7.2.17	Postal: Korean. . . . .	130
5.7.2.18	Postal: PlaNET . . . . .	131
5.7.2.19	Postal: PostNET. . . . .	131
5.7.2.20	Postal: Royal Mail . . . . .	131
5.7.2.21	2D DataMatrix . . . . .	131
5.7.2.22	2D Maxicode . . . . .	131
5.7.2.23	2D PDF-417. . . . .	131
5.7.2.24	2D Micro PDF-417 . . . . .	132
5.7.2.25	2D QR Code . . . . .	132
5.7.2.26	2D RSS Code . . . . .	132
5.7.2.27	Aztec . . . . .	132
5.7.3	Translations . . . . .	132
5.8	SNMP (Simple Network Management Protocol) Setup. . . . .	134
5.8.1	Contact Tab . . . . .	135
5.8.2	Communities Tab . . . . .	136
5.8.2.1	Adding A Community . . . . .	137
5.8.2.2	Modifying A Community Setting . . . . .	138
5.8.2.3	Removing An Existing Community . . . . .	138
5.8.3	Trap Destination Tab . . . . .	139
5.8.3.1	Enabling Authentication TRAPS. . . . .	139
5.8.3.2	Adding A Destination . . . . .	139
5.8.3.3	Changing A Destination . . . . .	140
5.8.3.4	Removing A Trap Destination . . . . .	140

5.8.4 Permitted Hosts Tab . . . . .	141
5.8.4.1 Adding A Host . . . . .	141
5.8.4.2 Changing A Host. . . . .	142



## 5.1 Remote Desktop Connection

Remote Desktop Connection is a 7530 application used to connect to a Windows Terminal Server so that you can run a “session” on the Server machine, using the 7530 (Windows CE device).

Refer to the following website for step-by-step information about setting up this connection:

<http://www.microsoft.com/WindowsXP/pro/using/howto/gomobile/remotedesktop/default.asp>

## 5.2 Pocket PC Compatibility

The 7530 supports the AYGShell API set that allows PocketPC-compatible applications to run on the hand-held. Microsoft® Windows® CE.NET 4.2 is designed to include application programming interface (API) compatibility support for the Microsoft Windows Powered Pocket PC 2002 shell in 7530s running Windows® CE.NET 4.2.

The website listed below describes the APIs exposed through AYGShell and the application compatibility between Windows Powered Pocket PC 2002-based applications and Windows CE.NET 4.2-based devices:

[http://msdn.microsoft.com/library/default.asp?url=/library/en-us/dncenet/html/WINCENET\\_CEPPC\\_App.asp](http://msdn.microsoft.com/library/default.asp?url=/library/en-us/dncenet/html/WINCENET_CEPPC_App.asp)

## 5.3 The Control Panel

The Windows CE Control Panel provides a group of icons through which you can set a variety of system-wide properties, such as mouse sensitivity, network configuration and the desktop color scheme.



**Note:** *If you are uncertain how to move around a dialogue box and make selections, review “Using A Dialogue Box” on page 76.*

When the 7530 boots up, the startup desktop (shell) is displayed, and any applications stored in the Startup folder start up immediately.

To access the Windows CE Control Panel:

- Press BLUE> <0> to display the Start Menu.
- Highlight Settings in Start Menu, and press the <RIGHT > arrow key to highlight the Control Panel option.
- Press the <ENTER> key to display the contents of the Control Panel window.

*If you have a touchscreen:*

- Use the stylus to tap on the Windows Start button in the taskbar to display the Start Menu. Tap on **S**ettings>**C**ontrol Panel.

The Control Panel folder contains icons used in the setup of your 7530.



Figure 5.1 Control Panel

## 5.4 Control Panel Icons

The Windows CE Control Panel provides a group of icons that allow you to customize and adjust settings on your 7530.



### Date/Time

Date/Time

Allows you to set the current Month, Date, Time and Time Zone on your unit.



### Display

Display

Changes the appearance (window colour scheme) on the unit desktop.



### Keyboard

Keyboard

Toggles character repeat on and off and specifies delay and rate for repeated characters. It also allows you to adjust the keyboard backlight threshold and intensity.



Volume &  
Sounds

## Volume & Sound

Allows you to adjust the volume of the beep that is emitted to indicate events like warnings, key clicks and, if your unit is equipped with a touch-screen, screen taps.

Sounds (wave files) cannot be reproduced on 7530 units. The beeper volume and the conditions under which it sounds are tailored from within the application installed on your unit.



Mouse

## Mouse Properties

For units equipped with touchscreens, this icon allows you to customize the sensitivity and speed of the stylus double-tap.



Owner

## Owner

Provides fields in which you can specify owner information. A 'Notes' tab allows additional information to be entered and displayed when the unit is powered up. 'Network ID' tab information is used to access network resources. (This information should be provided by your System Administrator.)



Password

## Password

Allows you to assign a password to restrict access to elements of the unit. Once assigned, password access cannot be circumvented so it is important that you write down your password and keep it in a safe place. Refer to "Security Settings" on page 69 for details.



Power

## Power

Displays battery pack power status. (Alternately, battery status can be accessed through the taskbar.) The 'Power Scheme' tab allows you to determine a suspend states, and the 'Charger' tab determines whether or not a battery that requires it, can be recalibrated. (Refer to "Power Saving Schemes" on page 101 for details.)

## Control Panel Icons



Regional

### Regional Settings

Allows you to specify the local language the display text will use along with the format of numbers, currency, time and date for your region.



Remove

### Remove Programs

Lists the programs that can be removed from your unit. To remove a program, select it and then click on the Remove button.



Stylus

### Stylus

Adjusts how Windows CE recognizes your double-tap (as slow or rapid successive taps).

Under the 'Calibration' tab, you can recalibrate your touchscreen by tapping on the 'Recalibrate' button and following the directions on the calibration screen.



System

### System

Displays system and memory properties. Under the Memory tab, you can allocate memory between storage memory and program memory.



Dialing

### Dialing

Specifies dialing settings, including area code, country code, dial type and the code to disable call waiting. You can store multiple patterns – for example, 'Work', 'Home', and so on using this dialogue box.



Certificates

### Certificates

A public key is transmitted as part of a certificate. The certificate assigned through this icon is used to ensure that the submitted public key is, in fact, the public key that belongs to the submitter. The client checks that the certificate has been digitally signed by a certification authority that the client explicitly trusts. "Certificate Assignment" on page 105 directs you to the appropriate setup information.





PC  
Connection

## PC Connection

Enables direct connections to a desktop computer. Selecting the ‘Change Connection’ button allows you to change the type of direct connect to your PC.



Teklogix  
Scanners

## Teklogix Scanners

Used to set up scanner parameters and choose the bar code symbologies that the 7530 scanner will successfully read.



Network and  
Dial-up Co...

## Network And Dial-up Connections

Displays a network window from which the 7530 radio can be configured and an existing configuration can be executed. Refer to “Configuring An IEEE 802.11 Radio Installed In The 7530” on page 18 for details.



Internet  
Options

## Internet Options

Used to configure your Internet browser including options such as identifying the default and search page that the browser applies when connecting to the Internet, setting the cache size, specifying the Internet connection options, and defining the security level that is applied when browsing.



SNMP

## SNMP

SNMP (Simple Network Management Protocol) is the protocol used to monitor and manage devices attached to a TCP/IP network.

## 5.5 Basic Setup

### 5.5.1 Display Properties

- In the Control Panel, choose the Display icon.



Figure 5.2 Choosing The Display Icon

#### 5.5.1.1 Display Contrast

The Contrast tab allows you to adjust the 7530 display contrast to suit the environment in which you are using the hand-held.

- In the Display Properties dialogue box, open the Contrast tab.

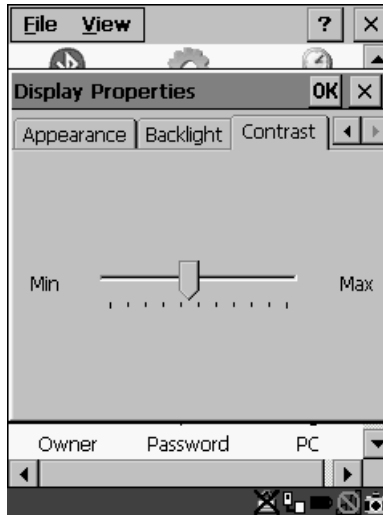


Figure 5.3 Display Contrast Properties

Sliding bar in the Contrast tab to the **left** decreases or **darkens** the display contrast. Sliding the bar to the **right** to increases or **lightens** the display contrast.

### 5.5.1.2 Display Backlight

The backlight is activated for a configurable amount of time if the ambient light is below a specified threshold and if the 7530 is in use (key press, scanner trigger or data received from the host). The Display Properties dialogue box in the Control Panel allows you to specify the intensity of the backlight along with how the backlight behaves in low-light conditions and when the unit is not in use.



**Note:** *Keep in mind that this option may be restricted to supervisory use only.*

- In the Display Properties dialogue box, open the Backlight tab.

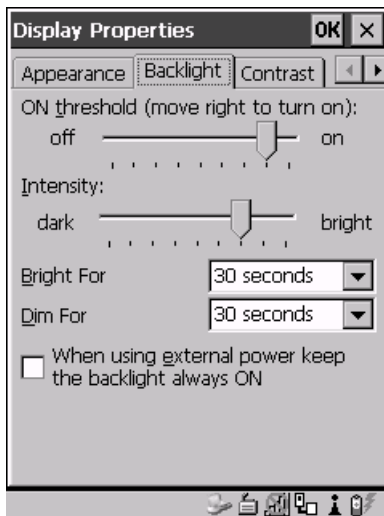


Figure 5.4 Display Backlight Properties



**Note:** *Backlight changes take affect immediately. You do not need to reset the 7530.*

## ON Threshold

The 7530 is equipped with an ambient light sensor. This sliding bar allows you to determine how dark the ambient light needs to be before the backlight turns on.

## Intensity

This parameter is used to adjust the light intensity of the 7530 backlight. Sliding the bar to the left lowers the light intensity, and sliding it to the right raises the intensity.

## Bright For

The value chosen from this dropdown menu determines the duration of time that the backlight stays on at the configured intensity when a unit is not in use.

## Dim For

The value chosen from this dropdown menu determines the duration of time that the backlight stays on at half the configured intensity (dimmed backlight) when a unit is not in use.

## External Power Checkbox

When you select (✓) the checkbox next to 'When using external power keep the backlight always ON.', the backlight remains ON at the configured intensity *when the 7530 is operating with external power* (not battery power). If the 7530 is drawing power from its battery, this option is ignored and the other parameters defined in Display Properties dialogue box take affect.

### 5.5.1.3 Display Appearance

- In the Display Properties dialogue box, open the Appearance tab.



Figure 5.5 Display Appearance Properties

This dialogue box allows you to customize the display colour scheme.

## 5.5.2 Keyboard Properties

This icon displays the Keyboard Properties dialogue box in which you can adjust the repeat rate of the keys, the intensity of the keyboard backlight and the behaviour of the <BLUE> and <ORANGE> modifier keys. This dialogue box also allows you to define macro keys and Unicode characters.

- In the Control Panel, choose the Keyboard icon.

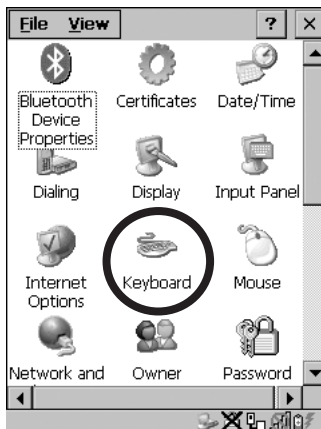


Figure 5.6 Choosing The Keyboard Icon

### 5.5.2.1 Key Repeat

- In the Keyboard Properties dialogue box, open the Repeat tab.

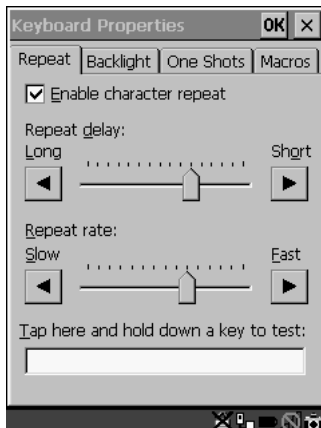


Figure 5.7 Key Repeat Properties

## Repeat Delay

The value assigned for this parameter determines the delay in milliseconds between repeat characters. Sliding the Repeat Delay bar to the left increases the delay between key repeats while sliding the bar to the right shortens the repeat delay time.

## Repeat Rate

The value assigned for the Repeat Rate parameter determines how quickly the key you press repeats and is measured in characters per second (cps). Sliding the bar to the left slows the repeat rate, and sliding the bar to the right increases the repeat rate.



**Note:** Use the field at the bottom of this dialogue box to test the repeat delay and rate settings you've chosen.

### 5.5.2.2 Keyboard Backlight

- In the Keyboard Properties dialogue box, open the Backlight tab.

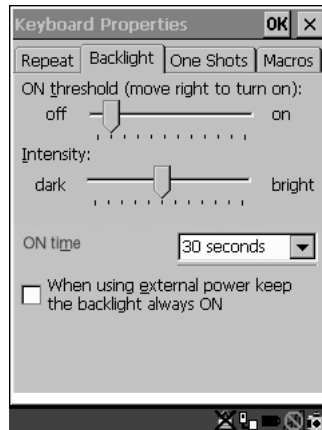


Figure 5.8 Keyboard Backlight Properties

### ON Threshold

The ON Threshold sliding bar allows you to determine how dark the ambient light needs to be before the keyboard backlight turns on.

### Intensity

This parameter is used to adjust the light intensity of the 7530 keyboard backlight. Sliding the bar to the left darkens the keyboard backlight intensity, and sliding it to the right lightens the intensity.

## ON Time

The value chosen from this dropdown menu determines the duration of time that the keyboard backlight stays on when a unit is not in use.

### 5.5.2.3 Keyboard One Shot Modes

- In the Keyboard Properties dialogue box, open the One Shots tab.

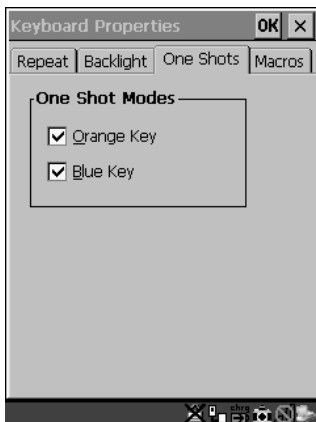


Figure 5.9 Keyboard One Shot Properties

When these options are enabled (✓), the <ORANGE> and <BLUE> keys only remain active until the next key is pressed. If the 'One Shots' options are disabled (the checkbox is left blank), the <ORANGE> and <BLUE> keys are locked 'on' when pressed only **once**; they remain 'on' until they are pressed a second time to unlock them.



**Note:** *Keep in mind that checking the taskbar lets you know whether or not these keys are locked on. When the <ORANGE> and <BLUE> keys are locked 'on', the taskbar at the bottom of the screen displays them in **uppercase** characters – BLUE KEY and ORANGE KEY. If these keys are displayed in **lowercase** characters in the taskbar, you'll know that the Blue Key and the Orange Key are **not** locked. They will become inactive following a key press.*



### 5.5.2.4 Keyboard Macro Keys

- In the Keyboard Properties dialogue box, open the Macros tab.

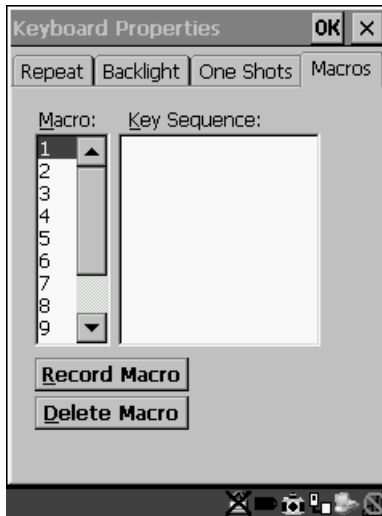


Figure 5.10 Macro Dialogue Box

A macro has 20 programmable characters (or “positions”). The macro keys can be programmed to replace frequently used keystrokes, along with the function of executable keys including <ENTER>, <BKSP> and <DEL> (<BLUE>-<BKSP>), function keys and arrow keys.

### Recording And Saving A Macro

You can program up to 12 macro keys on a **58-key** keyboard and 6 macro keys on a **36-key** keyboard.

- In the Macro: menu, highlight a macro key number – for example, macro 1 to assign a macro to macro key <M1>. Press the <TAB> key twice to highlight the Record Macro button, and press <ENTER>.

A message screen is displayed instructing you to 'Please Enter Key Strokes'.



Figure 5.11 Recording A Macro

- Type the macro sequence you want to assign to the Macro key. You can type text and numbers, and you can program the function of special keys into a macro.
- When you've finished recording your macro sequence, press the key sequence – <CTRL> <ALT> <ENTER>.

A new screen displays the macro sequence you created. The Save Macro button is highlighted.

- Press <ENTER> to save your macro.



**Note:** If you want to discard the macro you've just created, press the <TAB> key to highlight the Discard Macro button and press <ENTER>.

## Executing A Macro

To execute a macro:

- Press the macro key to which you've assigned the macro. For example, if you created a macro for macro key '1', press <M1> to execute the macro.

## Deleting A Macro

To delete a macro:

- In the **Macros** tab, use the arrow keys to highlight the macro number you want to delete.
- Press <TAB> to highlight the **Delete Macro** button, and press <ENTER>.

### 5.5.2.5 Unicode Mapping

- In the **Keyboard Properties** dialogue box, open the **Unicode Mapping** tab.

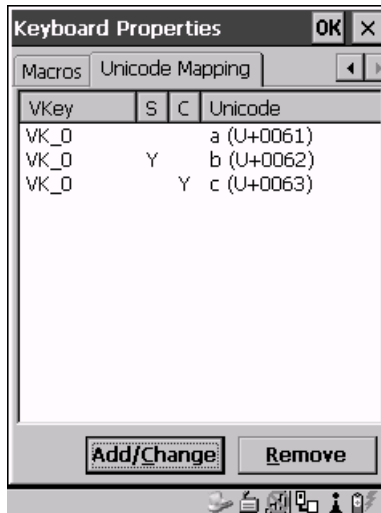


Figure 5.12 Unicode Mapping

The **Unicode Mapping** tab is used to map combinations of virtual key values and <CTRL> and <SHIFT> states to Unicode™ values. This tab shows the configured Unicode character along with the Unicode value. For example, the sample screen above shows “a (U+0061)” indicating that the character “a” is represented by the Unicode value “0061”, and so on. Keep in mind that Unicode configurations are represented as hexadecimal rather than decimal values.

All user-defined Unicode mappings are listed in the **Unicode Mapping** tab in order of virtual key value, and then by order of the shift state. If a Unicode mapping is not listed, the Unicode mapping is mapped to the default Unicode value.

## Adding And Changing Unicode Values



**Important:** *Changes to Unicode mappings are not saved until you exit the Keyboard Properties dialog box.*

- Press <TAB> to highlight the Add/Change button, and press <ENTER>.

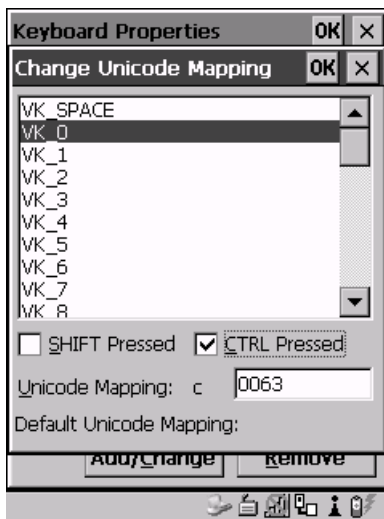


Figure 5.13 Adding And Change Unicode Values

- Highlight the a value in the Unicode mapping list – in the sample screen above, a value will be assigned to virtual key 0 (VK 0).
- Press <TAB> to position the cursor in the ‘Unicode Mapping’ field and type a Unicode value for the highlighted key.



**Note:** *To add a shifted state – <SHIFT> and/or <CTRL>, press <TAB> to position the cursor in the checkbox next to ‘SHIFT Pressed’ and/or ‘CTRL Pressed’. Press <SPACE> to select (√) the shift state you want to assign.*

## Removing Unicode Values

- In the ‘Unicode Mapping’ tab, highlight the item you want to delete, and press <TAB> to highlight the Remove button.
- Press <ENTER> to delete the value.

## 5.5.3 Volume And Sound Properties



**Note:** Sounds (wave files) cannot be reproduced on 7530 units. The conditions under which 7530s emit sounds are tailored from within the application installed on your unit.

- In the Control Panel, choose the Volume & Sounds icon.

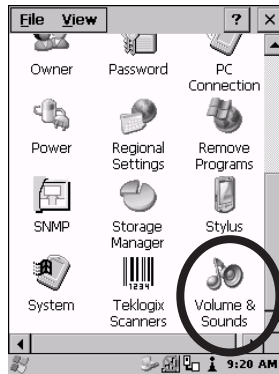


Figure 5.14 Choosing The Volume Icon

### 5.5.3.1 Volume Adjustments

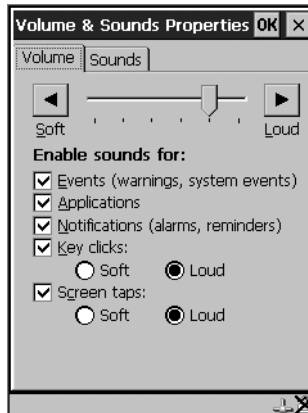


Figure 5.15 Volume Settings

- Slide the volume button to the left to lower the beeper volume or to the right to increase the beeper volume.
- Under the heading 'Enable sounds for:', enable (✓) the conditions under which you want the 7530 to emit a beep.

## 5.5.4 Power Management Properties

This icon displays a Power Properties dialog box that indicates the unit's battery capacity and allows you to manage battery use.

- In the Control Panel, choose the Power icon.



Figure 5.16 Choosing The Power Icon

### 5.5.4.1 Battery Capacity

- In the Power Properties dialog box, open the Battery tab.

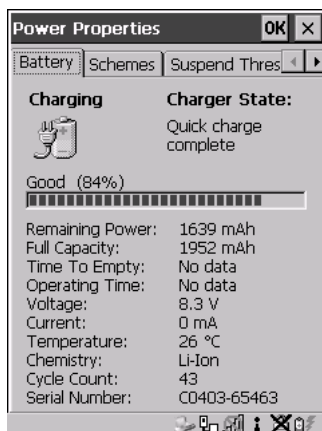


Figure 5.17 Power Battery Properties

The Battery tab details information about the battery installed in your 7530.

## 5.5.4.2 Power Saving Schemes

- In the Power Properties dialogue box, open the Schemes tab.

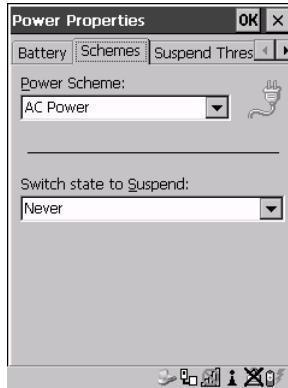


Figure 5.18 Power Scheme Properties

### Power Scheme

This dropdown menu allows you to specify whether the unit is using AC Power or Battery Power.

### Switch State To Suspend



**Important:** *Psion Teklogix recommends setting the Suspend value to 10 minutes. Setting ‘Switch State To Suspend’ to ‘Never’ will adversely affect the battery run time.*

*To further reduce power consumption, carefully consider the duration of time that the display backlight is ‘on’ (see “Display Backlight” on page 89).*

When the 7530 is idle – not receiving any user input (a key touch, a scan, and so on) or system activity (serial data, an activity initiated by an application, and so on), the hand-held uses the value assigned in the Switch State To Suspend field to determine when the unit will go to sleep (appear to be off).

When the time in the Suspend field elapses without any activity, the unit enters Suspend state. In Suspend state, the 7530 CPU enters a *sleep* state, and the radio is shut off. The state of the device (RAM contents) is preserved. Pressing <ENTER> wakes the system from suspend state. When the 7530 is in suspend state, the network connection will not be broken immediately. If the connection is dropped, you must re-establish the network connection.

### 5.5.4.3 Suspend Threshold

- In the Power Properties dialogue box, open the Suspend Threshold tab.

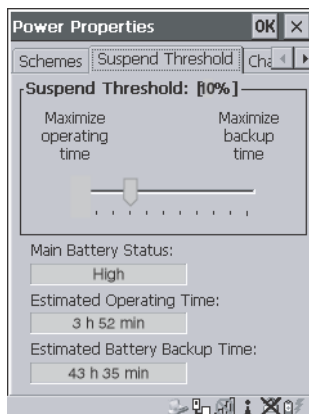


Figure 5.19 Suspend Threshold Properties

### Suspend Threshold

The sliding bar in this tab is used to set the battery capacity (as a percentage value) at which the hand-held will be forced into a *suspend* state. For example, if you slide the bar in the Suspend Threshold tab to the right to the 10% level, when the battery capacity falls to 10%, the 7530 will enter suspend state. You will not be able to resume until the battery is charged, or you operate the 7530 using AC power. The allowable threshold ranges from 0 to 50%. The default value is 0%.



**Note:** *The 7530 hand-held does not enter suspend state when it is using AC power.*

### Main Battery Status

This field indicates the status of the main battery.

### Estimated Operating Time

This field estimates the length of time the 7530 can remain 'on' (operating) before reaching the configured Suspend Threshold.

### Estimated Battery Backup Time

This field displays the amount of time the state of the 7530 will be maintained in *suspend* at the currently configured Suspend Threshold.



### 5.5.4.4 Charger Details

- In the Power Properties dialogue box, open the Charger tab.

When the 7530 is in a Combo Dock, enabling (✓) Allow Battery Calibration in this tab allows a battery requiring recalibration to be fully discharged and recharged.

Recalibration occasionally extends the battery charge time. If you prefer that the battery always be charged in the shortest time possible, *do not* check this box.

### 5.5.5 Stylus Properties



**Note:** *Touchscreen calibration may not be enabled on your unit. If your screen appears to require recalibration, contact your supervisor.*

- In the Control Panel, choose the Stylus icon.

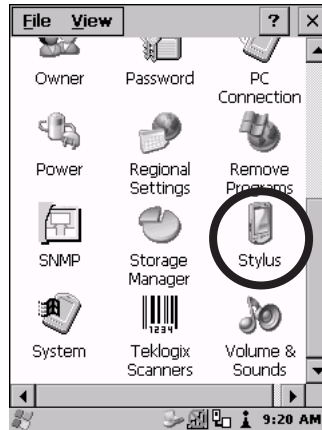


Figure 5.20 Stylus Icon

### 5.5.5.1 Setting Double-Tap Sensitivity

- In the Double-Tap tab, follow the directions to tailor the sensitivity of the stylus when you tap on the touchscreen.

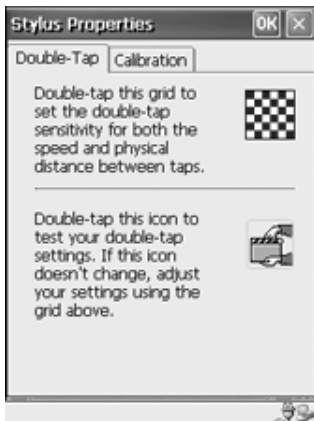


Figure 5.21 Setting Stylus Sensitivity

### 5.5.5.2 Touchscreen Calibration

Touchscreens rarely require recalibration. However, if your touchscreen has never been calibrated or if you find that the stylus pointer is not accurate when you tap on an item, follow the directions below.

- Choose the Calibration tab and then tap on the Recalibrate button.

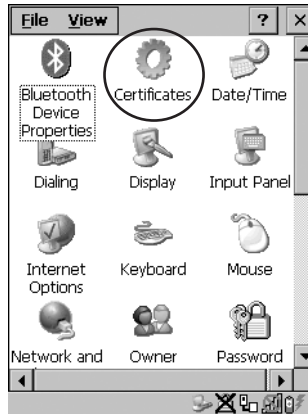


Figure 5.22 Calibrating The Touchscreen

- Follow the directions in the Calibration tab to recalibrate the screen.

## 5.5.6 Certificate Assignment

- In the Control Panel, choose the Certificate icon.



The dialogue box is used in conjunction with 802.1x authentication to enhance 7530 security.



Figure 5.23 Certificates Dialogue Box

For a detailed description about Certificate setup for both the server and client-side devices (7530s), refer to the following website:

[www.microsoft.com/windows2000/techno/planning/walkthroughs/default.asp](http://www.microsoft.com/windows2000/techno/planning/walkthroughs/default.asp) - "Security Services"



**Note:** When importing certificates, the 7530 only recognizes .cer files.

## 5.7 Scanner Properties Setup

The Teklogix Scanners icon in the Control Panel provides dialogue boxes in which you can tailor bar code options and choose the bar codes your scanner will recognize.

### 5.7.1 Scanner Options

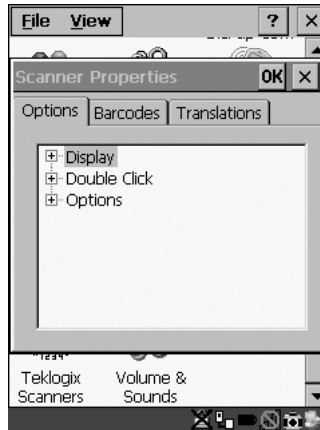


Figure 5.45 Bar Code Options

To display the sub-menus available in the Options tab:

- Highlight the option you want to work with, and press the right <ARROW> key.

To change a parameter:

- Highlight the parameter and press the <RIGHT> arrow key, *or* press the <SPACE> key.

If a field requires text entry, a text field is displayed in which you can type the appropriate value.

### Display Parameters

#### Scan Result

When this parameter is enabled (set to 'ON'), the type of bar code and the result of the scan appear on the screen. Note that this information is only displayed after a successful decode and is visible only while the scanner trigger is pressed. When the trigger is released, this information is cleared from the screen.

## Scan Indicator

When this parameter is enabled (set to 'ON'), the laser warning logo appears on the display whenever the scanner is activated.

## Scan Result Time (sec)

The value assigned to the "Scan Result Time (sec)" parameter determines how long the scan results of a successful scan are displayed on the screen. Time is measured in seconds, and a value of "0" (zero) disables the parameter.



*Note:* To remove the scan result from the screen before the "Result Time" has expired, point the scanner away from the bar code and press the trigger.

## Scan Beep

This parameter determines whether or not the 7530 emits an audible scanner 'beep' when a scan is performed. Set this parameter to either 'ON' to enable the beeper or 'OFF' to disable it.

## Scan Log File

If this parameter is enabled, the input barcode and the modified/translated output bar code are logged in the file \Flash Disk\ScanLog.txt. Keep in mind that if the 'Scan Log File' is enabled, there is a slight performance effect when performing multiple scans since the log file is written to persistent storage.

## Double Click Parameters

### Click Time (msec)

This parameter controls the maximum gap time (in milliseconds) for a double-click. If the time between the first and second clicks of the scanner trigger is within this time, it is considered a double-click. The allowable range is 0 to 1000. A value of zero disables this feature.

A double-click produces different results depending on whether or not a value is assigned in the "Click Data" parameter. When a value is *not* assigned for the "Click Data", double-clicking the scanner trigger overrides the target dot delay set in the "Dot Time" parameter and initiates a normal scan sweep. If a value *is* assigned for the "Click Data" parameter, double-clicking the scanner trigger inserts the "Click Data" value rather than initiating a scan.

## Scanner Options

### Click Data

For both integrated and external scanners, this parameter determines which character is sent to the application installed in your 7530 following a double-click. A dialogue box appears, asking that you press the key you want to insert. The ASCII/Unicode key value of the keypress is displayed.

Pressing the <ESC> key in this dialogue box resets the data to zero.

### Options

#### Dot Time (msec)

The value selected for “Dot Time (msec)” determines (in milliseconds) how long the targeting dot remains on before the scanner switches to a normal scan sweep. The allowable values are: 0, 0.1, 0.5, 1.0, 1.5, 2.0, 2.5 and 3.0 seconds. A value of 0 (zero) disables the target dot.

#### Short Code

When enabled (set to ‘ON’), this parameter allows scanning of short I 2 of 5 bar codes (2 characters). When disabled, these short bar codes are rejected.

Enabling “Short Code” may reduce the robustness of the decoding since the 7530 must decode more potential bar codes; it is therefore not recommended for general-purpose bar codes with 4 or more characters.

#### Verify

The value entered for this parameter determines the number of correct additional decodes required *after* the initial decode before a bar code is accepted. Higher values significantly increase the time it takes to decode a bar code but also improve the reliability of the decoded bar code.

#### Security

This parameter controls the tolerance for decoding edge-to-edge bar codes (Code 93, Code 128, UPC/EAN). Lower values have a lower tolerance for misreads, but they also increase the time it takes to decode the bar code. The default value of 30 is generally a good compromise setting.

## 5.7.2 Bar Codes

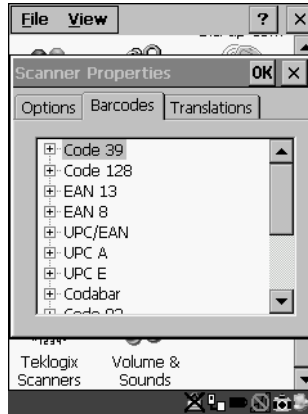


Figure 5.46 Bar Code Selection

All the available bar code symbologies can be selected from this menu.



**Important:** *To improve the decode speed and performance, enable (set to ‘ON’) only those codes that are required by the application.*

Keep in mind that some bar code types are only available when an internal imaging scanner is installed. The bar code settings do not affect the operation of internal or external decoded scanners. These scanners must be configured by scanning special configuration bar codes. These configuration bar codes affect the communication speed or data format between the scanner and the 7530 and must not be changed. The scanner manufacturer provides programming manuals for configuration purposes.

- For Symbol, refer to “Programming Guide P300”.
- For PSC, refer to “Powerscan Programing guide (PSC)”.

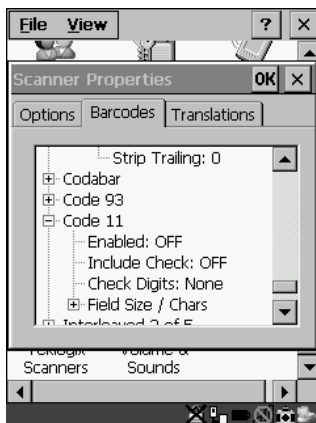


Figure 5.47 Code 39 Bar Code Settings

A 'plus' sign (+) to the left of the each bar code listed in this Barcodes tab indicate that that a sub-menu of parameters is attached. To work with a sub-menu:

- Highlight the bar code you want to work with, and press the <RIGHT> arrow key to display the sub-menu.
- Use the <UP> and <DOWN> arrow keys to highlight a parameter.
- To change a parameter value, press <SPACE> or the <RIGHT> arrow key. If a field requires text entry, a text box is displayed in which you can enter the appropriate value.

### 5.7.2.1 Code 39 Settings

#### Full Ascii

If this parameter is enabled (set to 'ON'), the characters +, %, and / are used as escape characters. The combination of an escape character and the next character is converted to an equivalent ASCII character.

#### Include Check

If this parameter is enabled (set to 'ON'), the check digit is included with the decoded bar code data.



## AIAG Strip

If this parameter is enabled (set to 'ON'), the AIAG data identifier is removed from each decoded Code 39 label. The data identifier occurs in the first position next to the Code 39 start character. It can be a single alphabetic character or a series of numeric digits followed by an alphabetic character. This identifier defines the general category or specific use of the data contained in the rest of the bar code.



***Note:** If your unit is operating with the Psion Teklogix TESS application, this parameter should **not** be used in conjunction with the TESS AIAG feature. This is because the 7530 hand-held performs the strip function before it processes the data through the AIAG feature; if the prefix is stripped, the data is not identified as AIAG.*

## Error Accept

If the "Err Accept" and "AIAG Strip" parameters are enabled (set to 'ON'), all label data without an AIAG identifier character is accepted. If the "Err Accept" parameter is disabled and the "AIAG Strip" parameter is enabled (set to 'ON'), the label data is not accepted.

## Mod Checks

### Mod 43 Check

If this parameter is enabled (set to 'ON'), the Mod 43 check digit is calculated.

### Mod 10 Check

If this parameter is enabled (set to 'ON'), the Mod 10 check digit is calculated.

### None

If you choose 'None', a check is not executed.

## Field Size/Chars

### Field Size

The field size is the length of the field after the first character is stripped and the prefix and suffix characters are added. If the field size is non-zero, only bar codes of that length are passed through.

## Code 128 Settings

### Prefix Char

This character, if non-zero, is added before a successfully decoded bar code. Press the key you want to insert in the dialogue box attached to this parameter. The ASCII/Unicode key value of the keypress is displayed.

Pressing the <ESC> key in this dialogue box resets the data to zero.

### Suffix Char



**Note:** *The appended character is treated as any other keyboard character. For example, if <BKSP> is pressed, the usual action for that key is performed. If your unit is operating with the Psion Teklogix ANSI emulation application, the 7530 transmits the escape sequence associated with the function immediately after the bar code data.*

This character, if non-zero, is added after a successfully decoded bar code. Press the key you want to insert in the dialogue box attached to this parameter. The ASCII/Unicode key value of the keypress is displayed.

Pressing the <ESC> key in this dialogue box resets the data to zero.

### Strip Leading

This parameter determines the number of characters that will be removed from the beginning of the bar code before the prefix character is added.



**Note:** *For Code 39 bar codes, the “AIAG Strip” is performed before the “Strip Leading”.*

### Strip Trailing

The value entered in this parameter determines the number of characters that will be removed from the end of the bar code before the suffix character is added.

## 5.7.2.2 Code 128 Settings

### Include Sym

Setting “Include Sym” to ‘ON’ causes the group separator(s) and start code contained in this type of bar code to be displayed on the screen.



**Note:** *This option is available only when ‘EAN/UCC 128’ is selected.*

## Variations

When using Code 128, you can choose the variation or type of bar code variation the scanner will recognize. The options available are Standard, UCC and EAN/UCC. These options are described below.

### Standard

Enable (set to 'ON') "Standard" if Code 128 is desired.

### UCC 128

"UCC" is a variation of Code 128.

### EAN/UCC 128

To successfully scan this type of bar code, "EAN/UCC" must be enabled (set to 'ON'). "EAN/UCC" bar codes include group separators and start codes.

## Field Size/Chars

Refer to the description beginning on page 123 for details.

## 5.7.2.3 EAN 13 Settings

### Include Country

If this parameter is enabled (set to 'ON'), the country code is included with the decoded bar code data.

### Include Check

If this parameter is enabled (set to 'ON'), the check digit is included with the decoded bar code data.

### Addendum



**Important:** *Before "Addendum" can take effect, the "Short Code" parameter in the Options menu (see page 120) must be enabled (set to 'ON').*

An addendum is a separate bar code, supplementary to the main bar code. This parameter provides three options: Disabled, Optional and Required. Depending on the value chosen for this parameter, an addendum is recognized or ignored.

When “Addendum” is set to `Disabled`, the scanner does not recognize an addendum. If this parameter is set to `Optional`, the scanner searches for an addendum and if one exists, appends it to the main bar code. When the parameter is set to `Required`, the scanner does not accept the main bar code without an addendum.

## Prefix/Suffix

### Prefix Char

This character, if non-zero, is added before a successfully decoded bar code. Press the key you want to insert in the dialogue box attached to this parameter. The ASCII/Unicode key value of the keypress is displayed.

Pressing the `<ESC>` key in this dialogue box resets the data to zero.

### Suffix Char

This character, if non-zero, is added after a successfully decoded bar code. Press the key you want to insert in the dialogue box attached to this parameter. The ASCII/Unicode key value of the keypress is displayed.

Pressing the `<ESC>` key in this dialogue box resets the data to zero.

### Strip Leading

This parameter determines the number of characters that will be removed from the beginning of the bar code before the prefix character is added.



**Note:** *The appended character is treated as any other keyboard character. For example, if `<BKSP>` is pressed, the usual action for that key is performed. If your 7530 is operating with the Psion Teklogix ANSI emulation application, the hand-held transmits the escape sequence associated with the function immediately after the bar code data.*

### Strip Trailing

The value entered in this parameter determines the number of characters that will be removed from the end of the bar code before the suffix character is added.

## 5.7.2.4 EAN 8

### Include Check

If this parameter is enabled (set to “Y”), the check digit is included with the decoded bar code data.



## Addendum

**Important:** *Before “Addendum” can take effect, the “Short Code” parameter in the Options menu (see page 120) must be enabled (set to ‘ON’).*

Refer to “Addendum” on page 125.

## Prefix/Suffix

See “Size/Chars” beginning on page 126.

### 5.7.2.5 UPC And EAN Settings

#### Field Size/Char

Refer to page 123 for details.

### 5.7.2.6 UPC A Settings

#### Include Number Sys

If this parameter is enabled (set to ‘ON’), the number system digit is included with the decoded bar code data.

#### Include Check

If this parameter is enabled (set to ‘ON’), the check digit will be included with the decoded bar code data.

## Addendum



**Important:** *Before “Addendum” can take effect, the “Short Code” parameter in the Options menu (see page 120) must be enabled (set to ‘ON’).*

Refer to “Addendum” on page 125.

## Prefix/Suffix

Refer to page 126 for details.

### 5.7.2.7 UPC E Settings

#### Convert to UPC-A

Setting this parameter to ‘ON’ results in a non-standard decoding that returns 12 digits from the 6 digit UPC E bar code.

## Include Number Sys

If this parameter is enabled (set to 'ON'), the number system digit is included with the decoded bar code data.

## Include Check

When enabled (set to 'ON'), the check digit is included with the decoded bar code data.



## Addendum

**Important:** *Before "Addendum" can take effect, the "Short Code" parameter in the Options menu (see page 120) must be enabled (set to 'ON').*

Refer to "Addendum" on page 125.

## Prefix/Suffix

Refer to page 126 for details.

## 5.7.2.8 Codabar

### Field Size/Char

Refer to page 123 for details.

## 5.7.2.9 Code 93

### Field Size/Char

Refer to page 123 for details.

## 5.7.2.10 Code 11

### Include Check

If "Include Chk" is enabled (set to 'ON'), the check digit is included with the decoded bar code data.

### Check Digit

This parameter can be set to `None`, `One Check Digits` or `Two Check Digits`.

If this parameter set to `One Check Digits`, it is assumed that the last digit is a check digit.

If this parameter is set to `Two Check Digits`, it is assumed that the last two digits are check digits.

## Field Size/Chars

Refer to page 123 for details.

### 5.7.2.11 Interleaved 2 of 5

#### Mod 10 Chk

If this parameter is enabled (set to 'ON'), the Mod 10 check digit is calculated. This calculation is the same as the Code 39 Mod 10 check digit.

#### ITF Chk

If this parameter is enabled (set to 'ON'), the ITF-14/16 Mod10 check digit is calculated.

#### Include Check

If this parameter is enabled (set to 'ON'), the check digit is included with the decoded bar code data.

## Field Size/Chars

Refer to page 123 for details.

### 5.7.2.12 MSI Plessey

#### One Check Digit

If this parameter is enabled (set to 'ON'), it is assumed that the last digit is a check digit.

#### Include Check

If this parameter is enabled (set to 'ON'), the check digit is included with the decoded bar code data.

## Field Size/Chars

Refer to page 123 for details.

### 5.7.2.13 Discrete 2 of 5

#### Mod 10 Check

If this parameter is enabled (set to 'ON'), the Mod 10 check digit is calculated. This calculation is the same as the Code 39 Mod 10 check digit.

### ITF Check

If this parameter is enabled (set to 'ON'), the ITF-14/16 Mod10 check digit is calculated.

### Include Check

If this parameter is enabled (set to 'ON'), the check digit is included with the decoded bar code data.

### Field Size/Chars

Refer to page 123 for details.

## 5.7.2.14 IATA 2 of 5

### Mod 10 Check

If this parameter is enabled (set to 'ON'), the Mod 10 check digit is calculated.

### ITF Check

If this parameter is enabled (set to 'ON'), the ITF-14/16 Mod10 check digit is calculated.

### Include Check

If this parameter is enabled (set to 'ON'), the check digit is included with the decoded bar code data.

### Field Size/Chars

Refer to page 123 for details.

## 5.7.2.15 Postal: Australian

### Size/Chars

Refer to page 123 for details.

## 5.7.2.16 Postal: Japanese

### Size/Chars

Refer to page 123 for details.

## 5.7.2.17 Postal: Korean

### Size/Chars

Refer to page 123 for details.



### 5.7.2.18 Postal: PlaNET

#### Size/Chars

Refer to page 123 for details.

### 5.7.2.19 Postal: PostNET

#### Size/Chars

Refer to page 123 for details.

### 5.7.2.20 Postal: Royal Mail

#### Size/Chars

Refer to page 123 for details.

### 5.7.2.21 2D DataMatrix

#### Inverse Video

If enabled (set to 'ON'), this parameter allows symbols that contain light cells on a dark background to be decoded.

#### Rectangular Symbols

When enabled (set to 'ON'), this parameter allows rectangular DataMatrix symbols to be decoded.

#### Small Symbols

If enabled (set to 'ON'), DataMatrix symbols of small physical size can be successfully decoded.

#### Field Size/Chars

Refer to page 123 for details.

### 5.7.2.22 2D Maxicode

#### Field Size/Chars

Refer to page 123 for details.

### 5.7.2.23 2D PDF-417

#### Field Size/Chars

Refer to page 123 for details.

### 5.7.2.24 2D Micro PDF-417

#### Field Size/Chars

Refer to page 123 for details.

### 5.7.2.25 2D QR Code

#### Inverse Video

If enabled (set to 'ON'), this parameter allows symbols that contain light cells on a dark background to be decoded.

#### Field Size/Chars

Refer to page 123 for details.

### 5.7.2.26 2D RSS Code

#### Field Size/Chars

Refer to page 123 for details.

### 5.7.2.27 Aztec

#### Field Size/Chars

Refer to page 123 for details.

## 5.7.3 Translations



Figure 5.48 Translation tab

- In the Translation tab, choose the Add button.

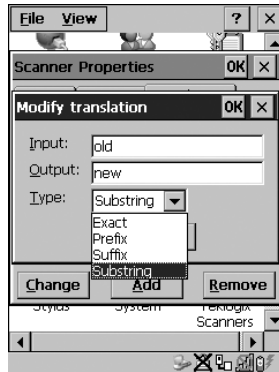


Figure 5.49 Translation Dialogue Box

## Input

This value is compared with the decoded bar code reading. If there is a match, the “Output” string is translated into the decoded bar code.

## Output

If there is a match between the decoded bar code and the corresponding “Input” string, the decoded bar code will be translated into the “Output” string. This string entry parameter can be null, or it may contain any combination of standard and special characters (e.g., function keys, <ENTER>, etc.).

## Type

The value chosen from this dropdown menu determines what is compared with the decoded bar code reading – the beginning of decoded bar code, the end of decoded bar code, the entire decoded bar code or anywhere within the decoded bar code (default).

## 5.8 SNMP (Simple Network Management Protocol) Setup

Simple Network Management Protocol (SNMP) is the protocol used to monitor and manage devices attached to a TCP/IP network (providing they support SNMP). SNMP uses Management Information Bases (MIBs) that define the variables an SNMP Network Management Station can access. Each product has a defined set of MIBs that determine how SNMP operates, the type of access allowed and so on.

All Teklogix products support the TEKLOGIX-GENERIC-MIB – a MIB that defines some common features across Teklogix products. All devices also support MIB-II, a management information base that defines the common features of TCP/IP networks. The SNMP Agent software embedded in the 7530 product supports SNMPv1 (RFC 1157).

- In the Control Panel, choose the SNMP icon.

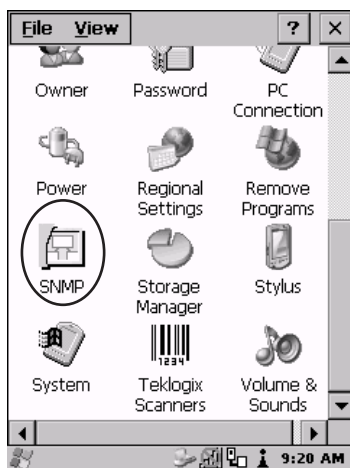


Figure 5.50 SNMP Icon

## 5.8.1 Contact Tab

The SNMP dialog box is displayed.

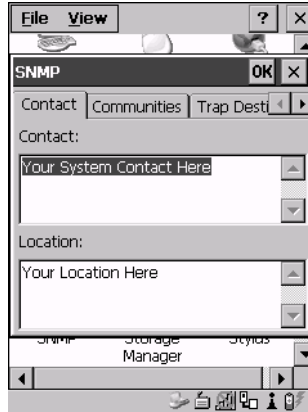


Figure 5.51 Contact Tab

### Contact

This field identifies the contact person for this managed node along with information about how to get in touch with this person. The content of this parameter is accessible through MIB-II's `sysContact` object.

### Location

This parameter is used to identify the physical location of this node (e.g., Warehouse A: Pillar 32B). The content of this parameter is accessible through MIB-II's `sysLocation` object.

## 5.8.2 Communities Tab



Figure 5.52 Community Settings

The “Communities” tab provides a means of limiting access to SNMP managed devices to those SNMP Managers with matching “community names”, as specified by RFC 1157.

### Enable SNMP

Enabling (✓) ‘Enable SNMP’ allows the device to respond to SNMP queries and to send Traps. After enabling this option and rebooting the device, the SNMP Agent will automatically start up. To disable this feature, remove the check mark from the check box.

### 5.8.2.1 Adding A Community

- Choose the Add button to add a new ‘community’.

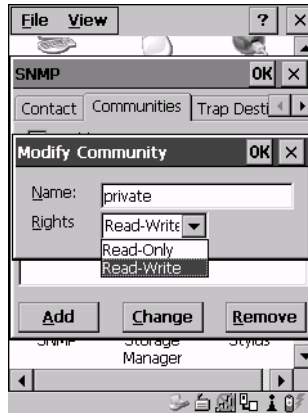


Figure 5.53 Adding A Community

#### Name

The value assigned here is the name assigned by the network administrator to the set of devices to which this managed node belongs.

#### Rights

This menu allows you to specify access – that is, ‘Read-Only’ or Read-Write’

### 5.8.2.2 Modifying A Community Setting

To modify an existing community:

- Highlight the community you want to alter.
- Choose the Change button.

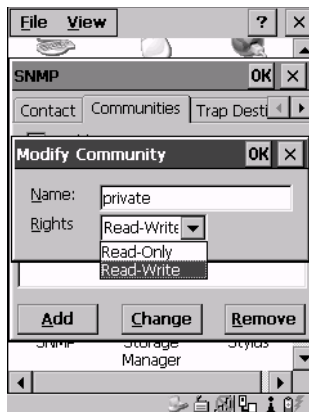


Figure 5.54 Changing Or Removing A Community

A Modify Community dialogue box is displayed, listing the community you highlighted.

- Edit the Name and/or Rights, and press <ENTER> to save your changes.

### 5.8.2.3 Removing An Existing Community

To remove an item:

- Highlight the community you want to remove in the Communities tab and then choose the Remove button.

A Delete Confirmation screen is displayed.

- To remove a community, choose the Yes button.
- If you decide not to remove the community, choose the No button.



## 5.8.3 Trap Destination Tab

A trap is an unsolicited report sent to SNMP Managers by the SNMP Agent running on the managed node. This option allows you to define where the report will be sent.



Figure 5.55 Trap Destination Tab

### 5.8.3.1 Enabling Authentication TRAPS

Enabling (✓) 'Enable Authentication TRAPS' allows authorization traps to be sent when a failure is detected (e.g., an SNMP message received with a bad community name).

### 5.8.3.2 Adding A Destination

To add a new destination:

- Choose the Add button.



Figure 5.56 Adding A Trap Destination

- Type a destination in the text box provided, and press <ENTER>.

### 5.8.3.3 Changing A Destination

To change an existing trap destination:

- Highlight the destination you want to alter in the Trap Destination tab, and then choose the Change button.

A dialogue box like the one displayed when you *add* a destination is displayed.



Figure 5.57 Changing A Destination

- Make the changes to the destination, and press <ENTER> to save the changes.

### 5.8.3.4 Removing A Trap Destination

To remove a trap destination:

- In the Trap Destination tab, highlight the destination you want to delete.
- Choose the Remove button.

A Delete Confirmation screen is displayed.

- To remove a destination, choose the Yes button.
- If you decide not to remove the destination, choose the No button.

## 5.8.4 Permitted Hosts Tab

For security reasons, the Network Administrator may want to restrict SNMP-node access to a known sub-set of SNMP Managers. This tab lists the IP addresses of all the SNMP Managers which are allowed to monitor and manage this device. If no entries are listed, the device will accept SNMP queries from any host.

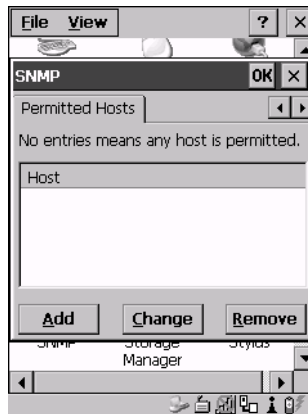


Figure 5.58 Permitted Hosts Tab

### 5.8.4.1 Adding A Host

To add a new host:

- Highlight the Add button, and press <ENTER>.

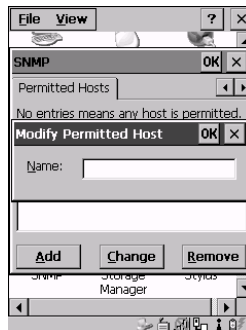


Figure 5.59 Adding A Host

- Type a new host IP address in the text box provided, and press <ENTER>.

## 5.8.4.2 Changing A Host

To change an existing host IP address:

- Highlight the IP address you want to alter in the Permitted Hosts tab, and then choose the Change button.

A dialogue box like the one displayed when you *add* a host is displayed.

- Make the necessary changes, and press <ENTER>.

# TEKTERM APPLICATION

# 6

6.1	The Tekterm Application . . . . .	147
6.2	Additional Keyboard Functions . . . . .	147
6.2.1	Function Keys And Softkeys . . . . .	147
6.2.1.1	Function Keys . . . . .	147
6.2.1.2	Softkey Function Keys . . . . .	148
6.2.2	Macro Keys . . . . .	149
6.3	Keyboard Modes . . . . .	150
6.3.1	View Mode . . . . .	150
6.3.1.1	Changing Font Sizes . . . . .	150
6.3.1.2	Panning The Screen Contents . . . . .	150
6.3.1.3	Exiting View Mode . . . . .	151
6.3.2	Using The Task Manager To Switch Between Applications . . . . .	152
6.4	The Tekterm Status Area . . . . .	153
6.5	TESS Emulation . . . . .	154
6.5.1	Configuration. . . . .	154
6.5.2	Working With Multiple Sessions. . . . .	154
6.5.3	The Field Types . . . . .	154
6.5.4	IBM 5250 Emulation Keys . . . . .	155
6.5.5	Data Entry . . . . .	155
6.5.5.1	TESS Edit Modes And Cursor Movement . . . . .	156
6.5.5.2	<DEL> Key Behaviour In TESS . . . . .	157
6.5.5.3	<BKSP> Key Behaviour In TESS . . . . .	158
6.5.6	TESS Status Message . . . . .	159
6.5.7	Lock Messages. . . . .	160
6.5.8	Control Commands . . . . .	160
6.5.9	Resetting A TESS Session . . . . .	160
6.5.10	The Local Menu . . . . .	161
6.5.11	Selecting Another Host Computer . . . . .	161
6.5.12	Queuing Mode . . . . .	162
6.6	ANSI Emulation . . . . .	162
6.6.1	Configuration. . . . .	162
6.6.2	Sending Data To The Host . . . . .	163
6.6.3	Psion Teklogix Keyboard And VT220 Equivalent Keys. . . . .	163

6.6.4	Block Mode (Local Editing)	164
6.6.5	Working With Sessions	165
6.6.5.1	Establishing A New Session	165
6.6.5.2	Listing Sessions And Moving To Other Sessions.	165
6.6.5.3	Closing A Session.	165
6.6.5.4	Printing A Screen	166
6.6.5.5	Smart Echo – Disabling.	166
6.8	The Tekterm Startup Display Menu.	168
6.9	Working With Menus	169
6.9.1	Using The Keyboard To Navigate Through Menus	170
6.9.1.1	Sub-Menus	170
6.9.1.2	Numeric Parameters.	170
6.9.1.3	Y/N Parameters	171
6.9.1.4	Alpha Parameters	171
6.9.1.5	String Entry Parameters.	171
6.9.2	Using The Touchscreen To Navigate Through Menus	173
6.9.2.1	Sub-Menus	173
6.9.2.2	Numeric Parameters.	174
6.9.2.3	Y/N Parameters	174
6.9.2.4	Alpha Parameters	174
6.9.2.5	String Entry Parameters.	174
6.9.3	Saving Changes To Parameters.	175
6.9.4	Retrieving Default Parameter Values	175
6.10	Resetting The 7530 Hand-Held Computer	175
6.11	The Parameters Menu	176
6.11.1	Security Settings.	176
6.12	Display Options	177
6.13	More Parameters.	177
6.14	Radio Parameters	179
6.15	System Parameters.	180
6.15.1	Keyboard	181
6.15.1.1	Macro Control Panel.	181
6.15.1.2	Indicators	182
6.15.1.3	Softkeys	182
6.15.1.4	Ctrl Panel	182
6.15.2	Audio	183
6.15.3	Power Mgmt Ctrl Panel	184
6.15.4	Security	185
6.15.4.1	Default Mode	185
6.15.4.2	User Level Options	185
6.15.4.3	Sup. Password	186
6.15.4.4	Allow Teklogix.	186

6.16	Scanner Control Panel . . . . .	187
6.17	View Manager . . . . .	187
6.17.1	Split Screen . . . . .	188
6.17.1.1	Splitting And Displaying Screens . . . . .	189
6.17.1.2	Moving Between Split Screens . . . . .	190
6.17.1.3	Toggling Between Full & Split Screens . . . . .	190
6.17.1.4	Using The Asterisk As A Wild Card . . . . .	190
6.17.2	Custom Characters (Unicode™) . . . . .	191
6.17.2.1	Creating A Unicode™ Character . . . . .	191
6.17.2.2	Displaying The Unicode™ Pop-up Window . . . . .	192
6.18	Applications . . . . .	194
6.18.1	ANSI Settings. . . . .	195
6.18.1.1	Host Conn. . . . .	196
6.18.1.2	Screen . . . . .	199
6.18.1.3	Xmit Modes . . . . .	202
6.18.1.4	Kbd Modes . . . . .	206
6.18.1.5	Edit Modes . . . . .	209
6.18.1.6	Serial . . . . .	210
6.18.1.7	Host Char Set . . . . .	210
6.18.1.8	Anchor View . . . . .	211
6.18.2	TESS Settings. . . . .	212
6.18.2.1	Host Conn. . . . .	213
6.18.2.2	Screen . . . . .	214
6.18.2.3	Characters . . . . .	216
6.18.2.4	Tests . . . . .	218
6.18.2.5	Features . . . . .	219
6.18.2.6	Scanner . . . . .	223
6.18.2.7	Fields . . . . .	224
6.18.2.8	Anchor View . . . . .	227
6.18.2.9	Emulation . . . . .	227
6.19	Ports– Tether And Console . . . . .	235
6.19.1	Tether And Console Port Peripheral Options . . . . .	235
6.19.2	Tether And Console Port Parameter Settings . . . . .	236
6.19.3	Tether And Console Port Scan-See Parameters. . . . .	239
6.19.3.1	Scan-See Sub-Menu – Mapping The Viewport . . . . .	239
6.19.3.2	Scan-See Keyboard Mapping . . . . .	244
6.20	Network . . . . .	244
6.20.1	Network Ctrl Panel Settings . . . . .	245
6.20.2	802.IQ v2 . . . . .	245





## 6.1 The Tekterm Application

Tekterm is a powerful emulation application ideally suited for real time data transaction applications associated with mainframes and servers. The 7530 includes unique features that support Tekterm – a Psion Teklogix application that has the ability to maintain multiple simultaneous sessions with a variety of host computers.

## 6.2 Additional Keyboard Functions

In addition to the standard keyboard functions (see “The Keyboard” on page 35), Tekterm supports function keys, softkeys and macro keys.

### 6.2.1 Function Keys And Softkeys

#### 6.2.1.1 Function Keys

The 7530 is equipped with a series of function keys each of which is defined in the application software. Depending on the type of keyboard your 7530 has – 58-key or 36-key – the number and location of the function keys on the keyboard varies slightly.

#### 58-Key Keyboard Function Keys

The 58-key keyboard is equipped with thirty function keys. Function keys <F1> to <F6> are located across the top of the keyboard and are directly accessible – a key combination is not required. Function keys <F7> to <F30> are colour coded in *blue* print above the alpha keys and are accessed using a key combination – <BLUE> followed by the appropriate alpha key.

To access function keys <F7> to <F30>:

- Press the <BLUE> key followed by the alpha key to which the function key you want to use is mapped. For example:  
To access function key <F7>, press <BLUE> <C>.  
To access function key <F8>, press <BLUE> <D>, and so on.

#### 36-Key Keyboard Function Keys

The 36-key keyboard is equipped with thirty function keys. Function keys <F1> to <F4> are located across the top of the keyboard and function keys <F5> to <F10> are located at the bottom of the keyboard.

**Softkey Function Keys**

Additional function keys – <F11> to <F20> – are colour coded in *orange* print above function keys <F1> to <F10>.

To access function keys <F11> to <F20>:

- Press the <ORANGE> key followed by the appropriate function key.  
For example:  
To access function key <F11>, press the <ORANGE> key followed by <F1>.  
To access function key <F12>, press <ORANGE> followed by <F2>, and so on.

To access function keys <F21> to <F30>, you'll need to press <SHIFT> <F1> to <F10>.

To access function keys <F21> to <F30>:

- Press the <SHIFT> key followed by the appropriate function key.  
For example:  
To access function key <F21>, press the <SHIFT> key followed by <F1>.  
To access function key <F22>, press <SHIFT> followed by <F2>, and so on.

### 6.2.1.2 Softkey Function Keys

To speed the process of moving through menus and changing parameters, function keys <F1> to <F5> have been programmed to perform specific actions in the Tekterm menus. Table 6.1 describes these function keys.

These softkeys can be reprogrammed to perform different functions within TESS and ANSI applications.



**Important:** *If your 7530 is equipped with a touchscreen, tapping the stylus on the appropriate softkey label executes the function of the softkey providing that the labels are visible at the bottom of the 7530 screen. See “Softkeys” on page 182 if they are not visible.*

Function Key	Softkey Function
<F1>	NEXT – Displays the next sub-menu
<F2>	PREV – Displays the previous menu.
<F3>	DEFLT – Restores parameters to default settings – even after pressing <F4> to save the changes.

<F4>	SAVE – Saves a change to a parameter value.
<F5>	LITRL – Literal mode allows special characters to be entered in a string parameter such as macro key strings.

Table 6.1 Softkeys



**Note:** *The SAVE onscreen label only appears when a parameter value has been changed and has not yet been saved.*

## 6.2.2 Macro Keys



**Important:** *Refer to “Keyboard Macro Keys” on page 95 for details about creating macros.*

7530 hand-helds are equipped with a series of macro keys that can be programmed to replace frequently used keystrokes, along with the *function* of executable keys like the <ENTER> key, the <BKSP> key, any function key and arrow key, and so on.

### 58-Key Keyboard Macro Keys

7530s with 58-key keyboards have twelve macro keys – <M1> to <M12>. These keys are colour coded in *orange* print above alpha keys <O> to <Z>.

To access a macro key:

- Press the <ORANGE> key followed by the appropriate alpha key from O to Z. For example:  
 To access macro key <M1>, press <ORANGE> <O>.  
 To access macro key <M2>, press <ORANGE> <P>, and so on.

### 36-Key Keyboard Macro Keys

36-key keyboards are equipped with six macro keys – <M1> to <M6>. Macro keys <M1> to <M2> are directly accessible in the bottom row of the keyboard – a key combination is not required.

Macro keys <M3> and <M4> are colour coded in *orange* print above macro keys <M1> and <M2>.

- To access <M3>, press the <ORANGE> key followed by <M1>
- To access <M4>, press <ORANGE> <M2>.

## Keyboard Modes

Macro keys <M5> to <M6> are colour coded in *blue* print above macro keys <M1> and <M2>.

- To access <M5>, press the <BLUE> key followed by <M1>.
- To access <M6>, press <BLUE> <M2>.

## 6.3 Keyboard Modes

### 6.3.1 View Mode

Placing the 7530 keyboard in *View* mode allows you to choose another screen font and to pan the contents of the screen.

To place the computer keyboard in *View* mode:

- Press <CTRL> <ALT> <V>.

When the hand-held is in *View* mode, the onscreen message – *View* – is displayed in the status area at the bottom of the screen.

Keep in mind that this is a toggle key combination – pressing <CTRL> <ALT> <V> a second time turns *View* mode off.

#### 6.3.1.1 Changing Font Sizes

To cycle through the available fonts (with the unit in *View* mode):

- Press the <F> key.

Each time you press the <F> key, the font on the screen changes. Once you've displayed the appropriate font:

- Press <CTRL> <ALT> <V> to exit *View* mode.

#### 6.3.1.2 Panning The Screen Contents

If the content of a screen is too large to fit in the margins of the 7530 display, the content can be *panned* or shifted to bring the information outside the margins into view. Normally, the Arrow keys move the cursor around the screen in the direction of the arrow pressed. However, if the 7530 is operating in *View* mode, the <LEFT>, <RIGHT>, <UP> and <DOWN> arrow keys pan the entire content of the screen rather than the cursor.

- Press <CTRL> <ALT> <V> to place the 7530 in *View* mode. An onscreen message – *View* – is displayed in the status area of the screen.

Panning relies on the values set in the “Use Increment”, “X Increment” and “Y Increment” parameters to determine the number of columns (spaces) and rows (lines) the screen contents shift.

- In the “More Parameters” menu, position the cursor on “View Manager” and press <F1>.
- First, enable the “Use Increment” parameter – set it to “Y”.

“X Increment” determines the number of columns (spaces) the screen pans when the <LEFT> or <RIGHT> arrow key is pressed in View mode.

“Y Increment” determines the number of rows (lines) the screen pans when the <UP> or <DOWN> arrow key is pressed in View mode.

- Assign a value to the “X Increment” and “Y Increment” parameters.

To pan the screen contents:

- Press the <RIGHT>, <LEFT>, <UP> or <DOWN> arrow key.



*Note:* Pressing the <LEFT> arrow pans the screen to the right, pressing the <RIGHT> arrow pans the screen to the left, and so on.

### 6.3.1.3 Exiting View Mode

To exit View mode and resume normal operation:

- Press <CTRL> <ALT> <V> again.



*Note:* You can press the <BLUE> key followed by the appropriate arrow key each time you want to pan the contents **one** increment at a time in the direction of the arrow key without placing the 7530 in View mode.

## 6.3.2 Using The Task Manager To Switch Between Applications

To display the Task Manager screen:

- Press <BLUE> <0> to display the Start Menu.
- Highlight Task Manager, and press <ENTER>, *or*
- Just type the underlined alpha character – in this case, the letter ‘t’.

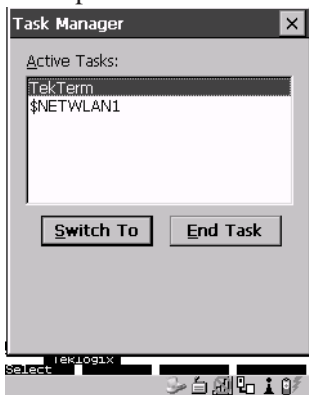


Figure 6.1 Task Manager Screen



**Note:** *A shortcut – to bypass the Start Menu and go directly to the ‘Task Manager’ screen, press <ALT> <ESC>.*

To switch between applications:

- Highlight the application you want to work with, and press <ENTER>.

To end or close an application:

- Highlight the application you want to end, press <TAB> to highlight the <End Task> button, and press <ENTER>.