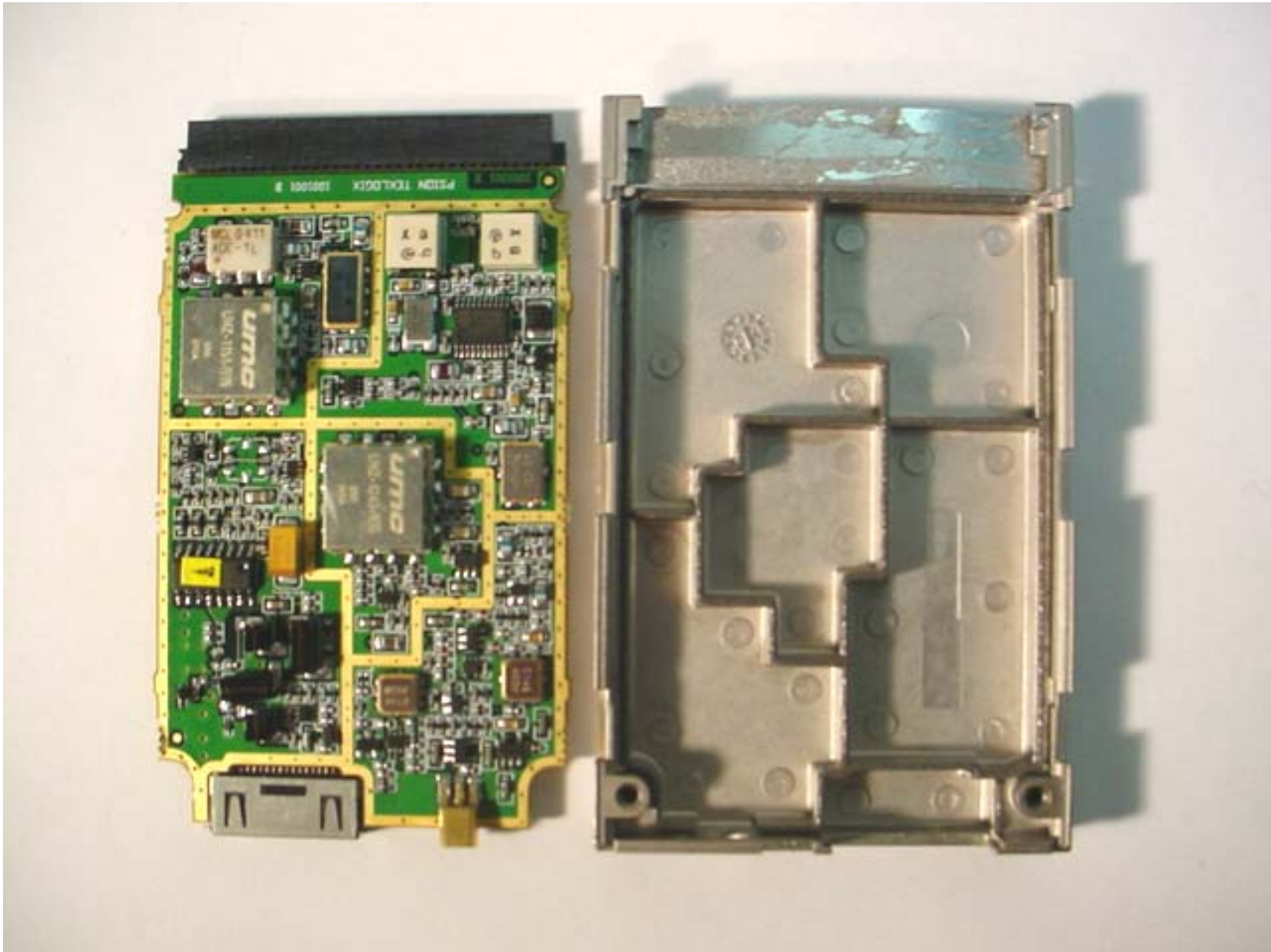


**Annex 3 - Internal Photographs of the Equipment under Test**  
UHF Radio Transceiver Module, Model RA1001

**Photo # 1**  
FCC ID: GM37530RA1001  
IC: 2739A-RA1001

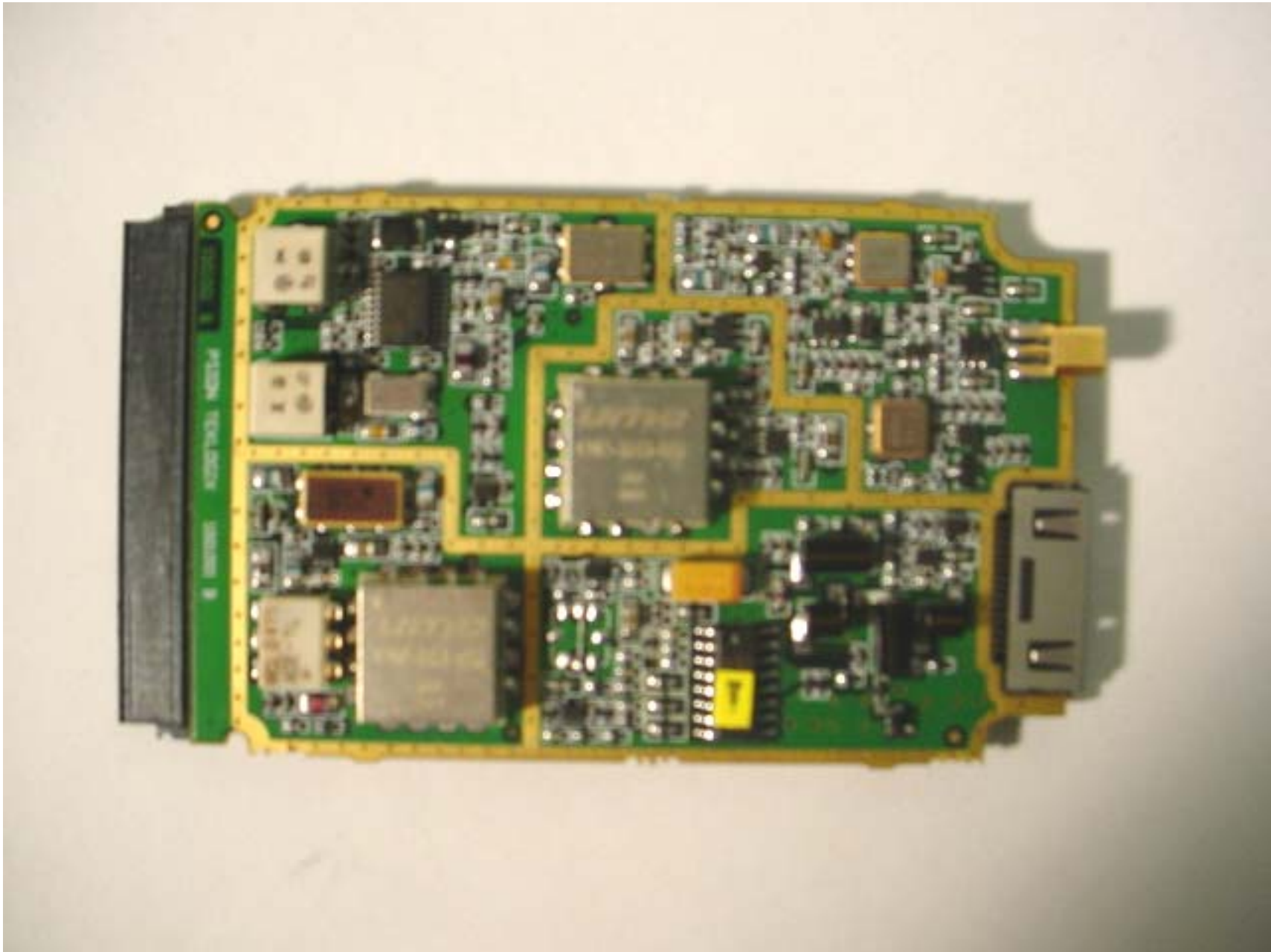
**Model RA1001 – 450-470 MHz Band**



**Annex 3 - Internal Photographs of the Equipment under Test**  
UHF Radio Transceiver Module, Model RA1001

**Photo # 2**  
FCC ID: GM37530RA1001  
IC: 2739A-RA1001

**Model RA1001 – 450-470 MHz Band**



**Annex 3 - Internal Photographs of the Equipment under Test**  
UHF Radio Transceiver Module, Model RA1001

**Photo # 3**  
FCC ID: GM37530RA1001  
IC: 2739A-RA1001

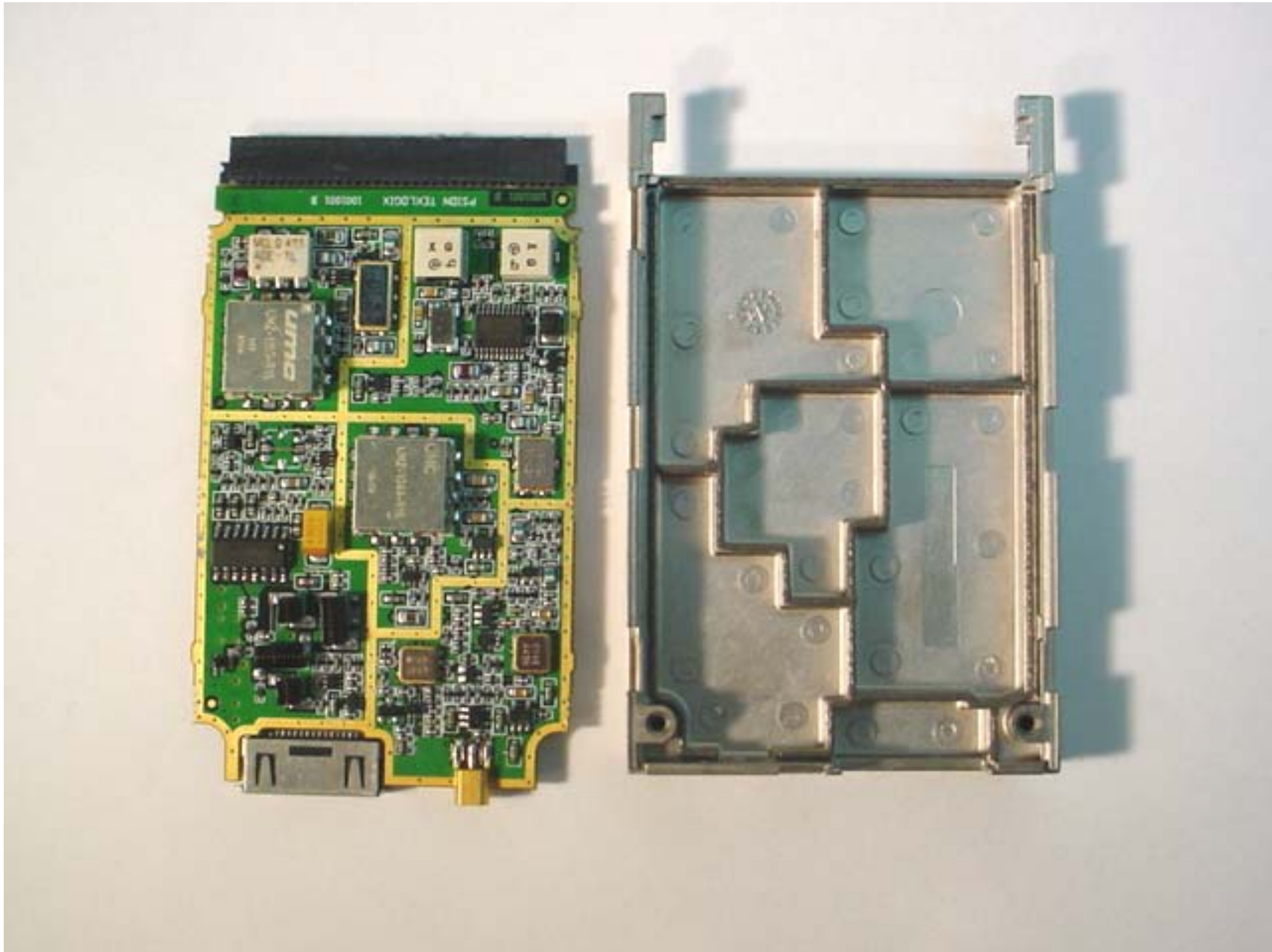
**Model RA1001 – 450-470 MHz Band**



**Annex 3 - Internal Photographs of the Equipment under Test**  
UHF Radio Transceiver Module, Model RA1001

**Photo # 4**  
FCC ID: GM37530RA1001  
IC: 2739A-RA1001

**Model RA1001 – 435-451 MHz Band**



**Model RA1001 – 435-451 MHz Band**



**Annex 3 - Internal Photographs of the Equipment under Test**  
UHF Radio Transceiver Module, Model RA1001

**Photo # 6**  
FCC ID: GM37530RA1001  
IC: 2739A-RA1001

**Model RA1001 – 435-451 MHz Band**

