

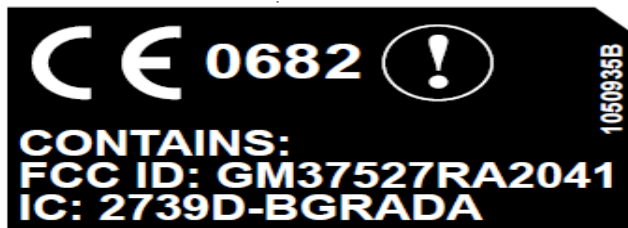
The Bluetooth module built in (7527C and 7527S) hosts has already got a limit module approval (LMA) FCC grant (FCC ID: GM37525BTB). Based on the Bluetooth function basis, the BT+ WLAN was applied for Original Equipment Authorization. The WWAN module also got an approval on hosts,7527C and 7527S. Finally, three Radio functions, Bluetooth, WLAN, and WWAN, inside hosts,7527C and 7527S, will be applied for FCC PC II change (WLAN and WWAN co-transmission ).

7527C

Original Equipment Authorization

WLAN + BT

(FCC ID: GM37527RA2041 & FCC ID: GM37525BTB)



[FCC PC II change \(WLAN and WWAN co-transmission \)](#)

WLAN + WWAN + BT

(FCC ID: GM37527RA2041 & FCC ID: GM375273RADA & FCC ID: GM37525BTB)

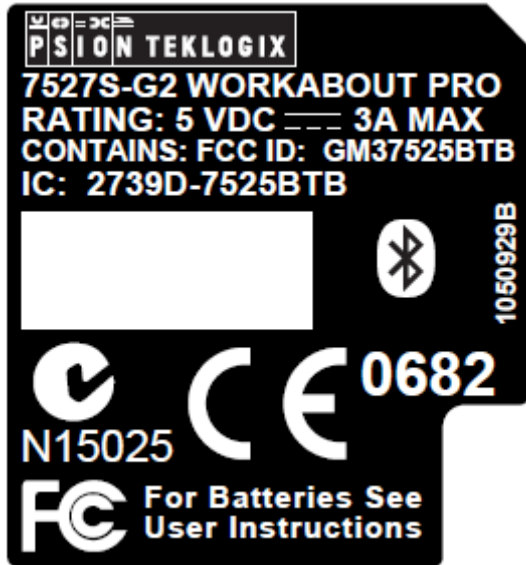


7527S

**Original Equipment Authorization**

WLAN + BT

(FCC ID: GM37527RA2041 & FCC ID: GM37525BTB)



**FCC PC II change (WLAN and WWAN co-transmission )**

WLAN + WWAN + BT

(FCC ID: GM37527RA2041 & FCC ID: GM375273RADA & FCC ID: GM37525BTB)

