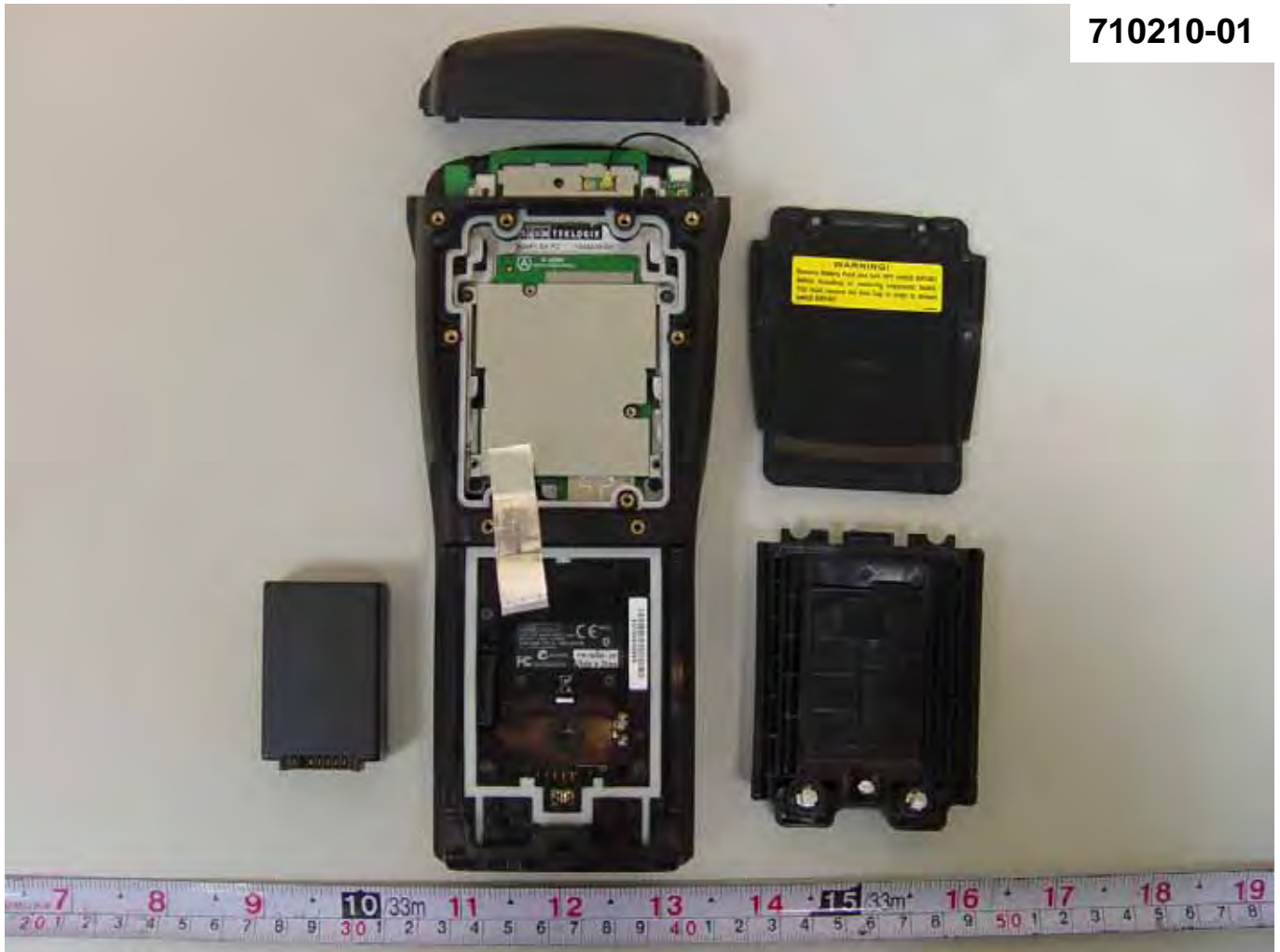




APPENDIX B. Internal Photographs of EUT

7527C

710210-01





710210-01





710210-01

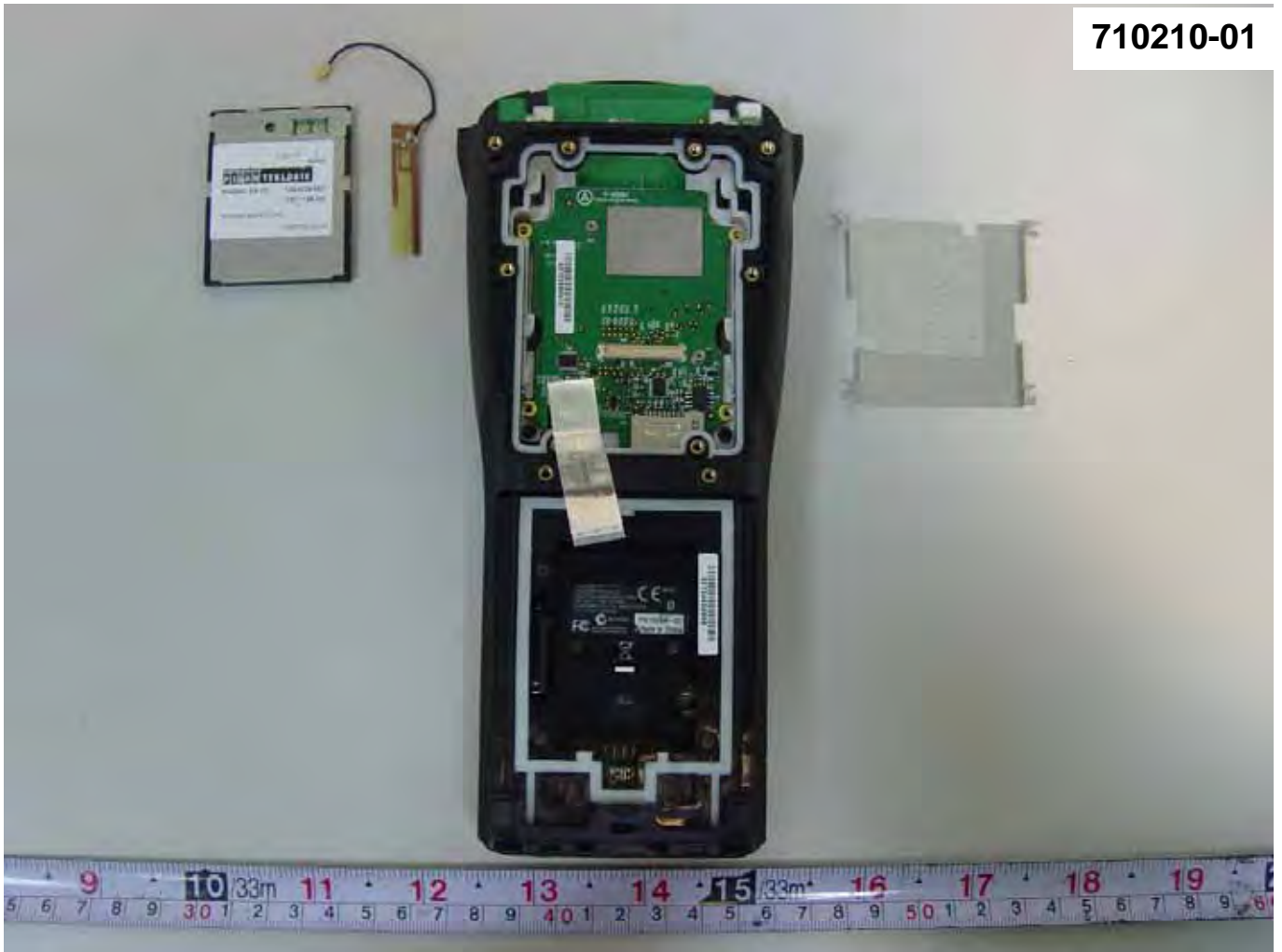


710210-01





710210-01





710210-01



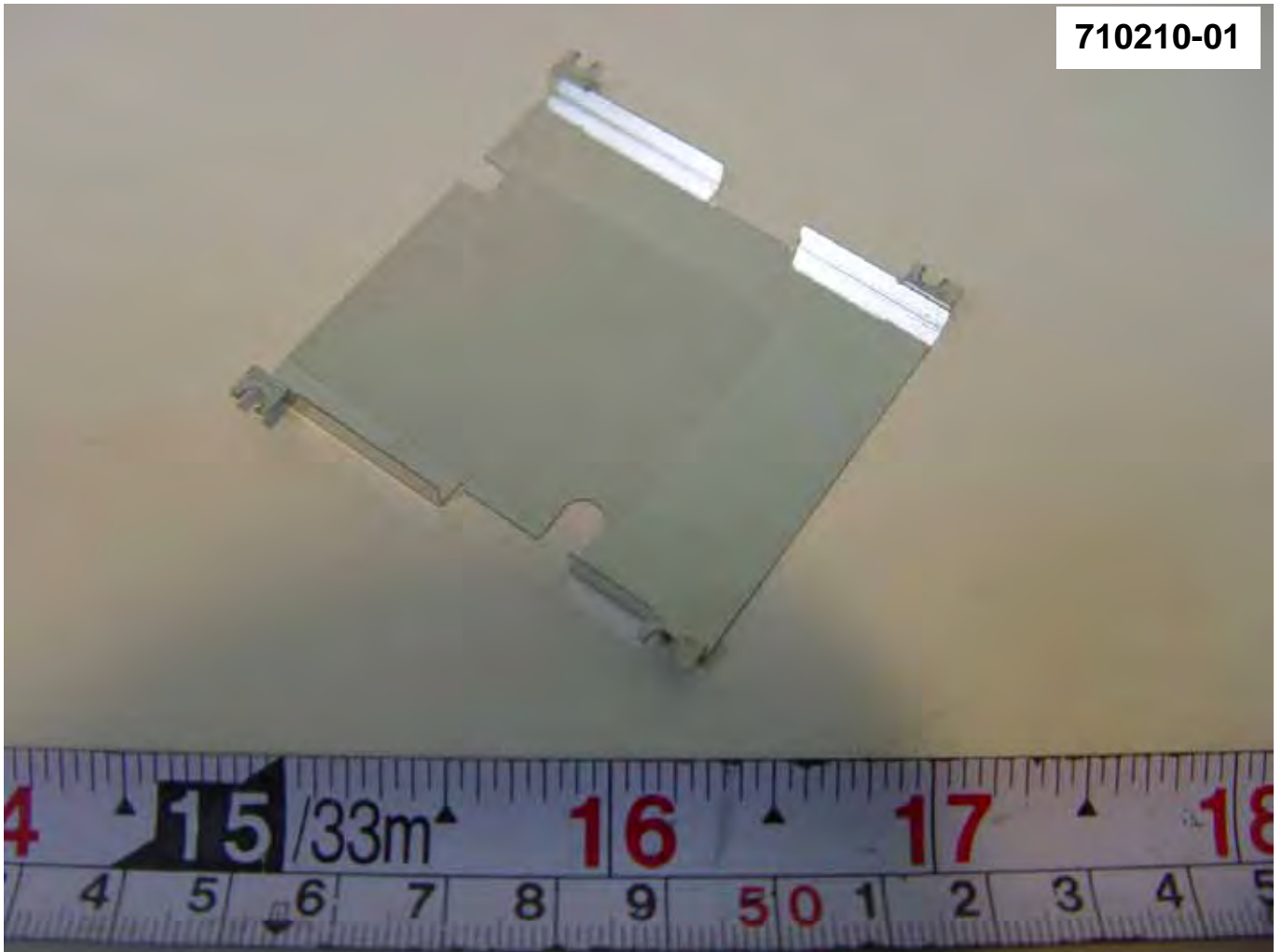


710210-01



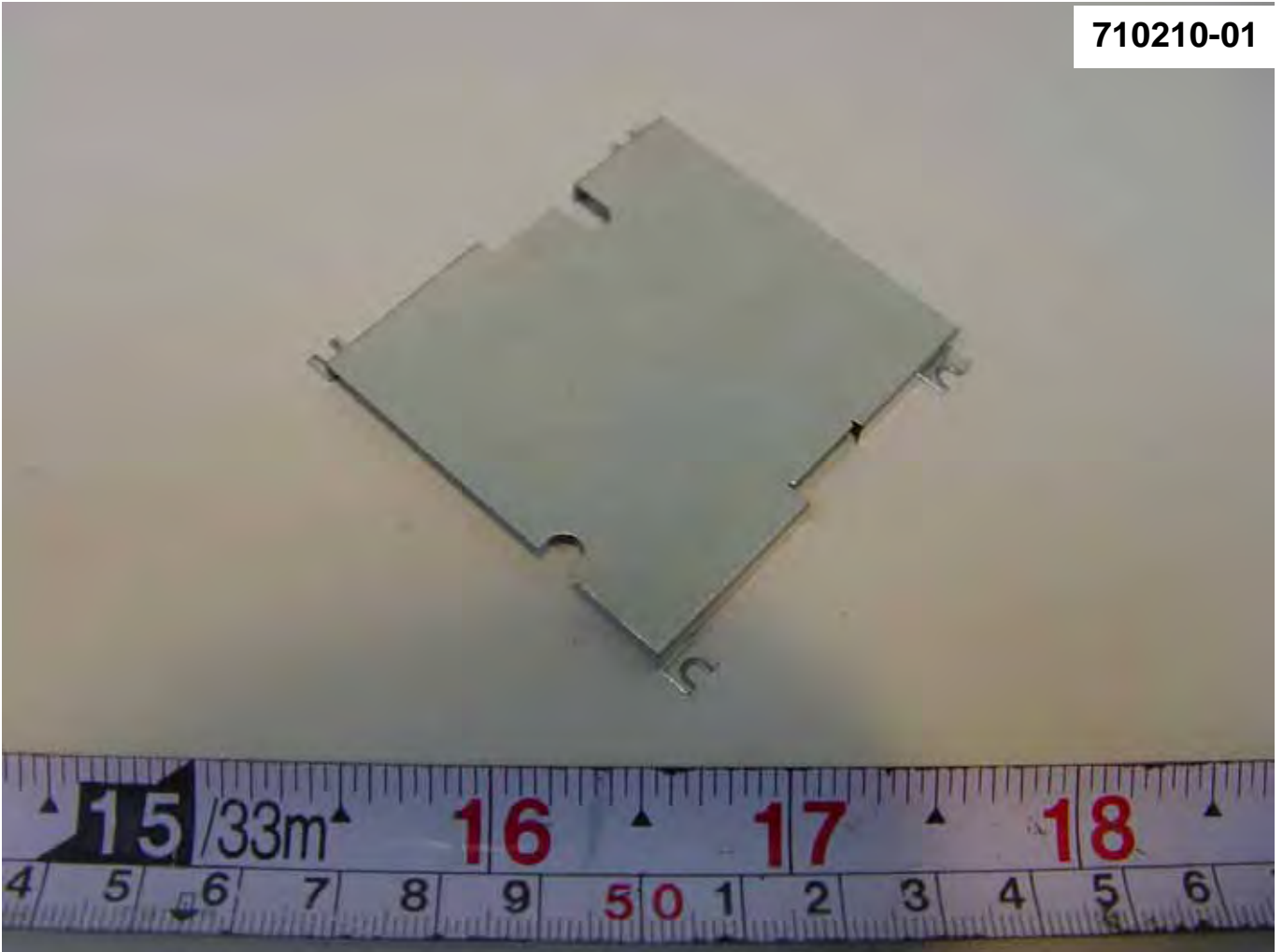


710210-01





710210-01



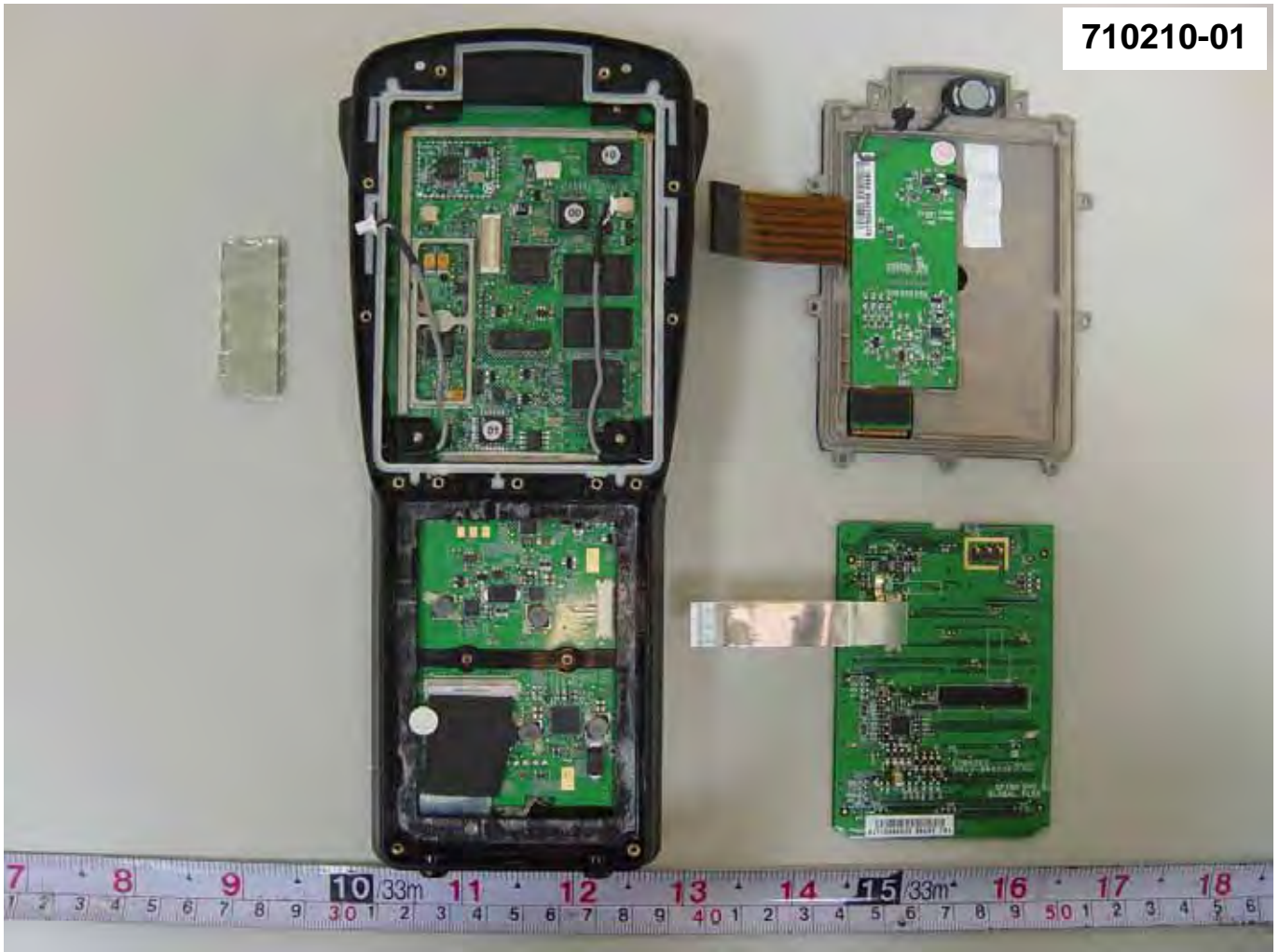


710210-01





710210-01



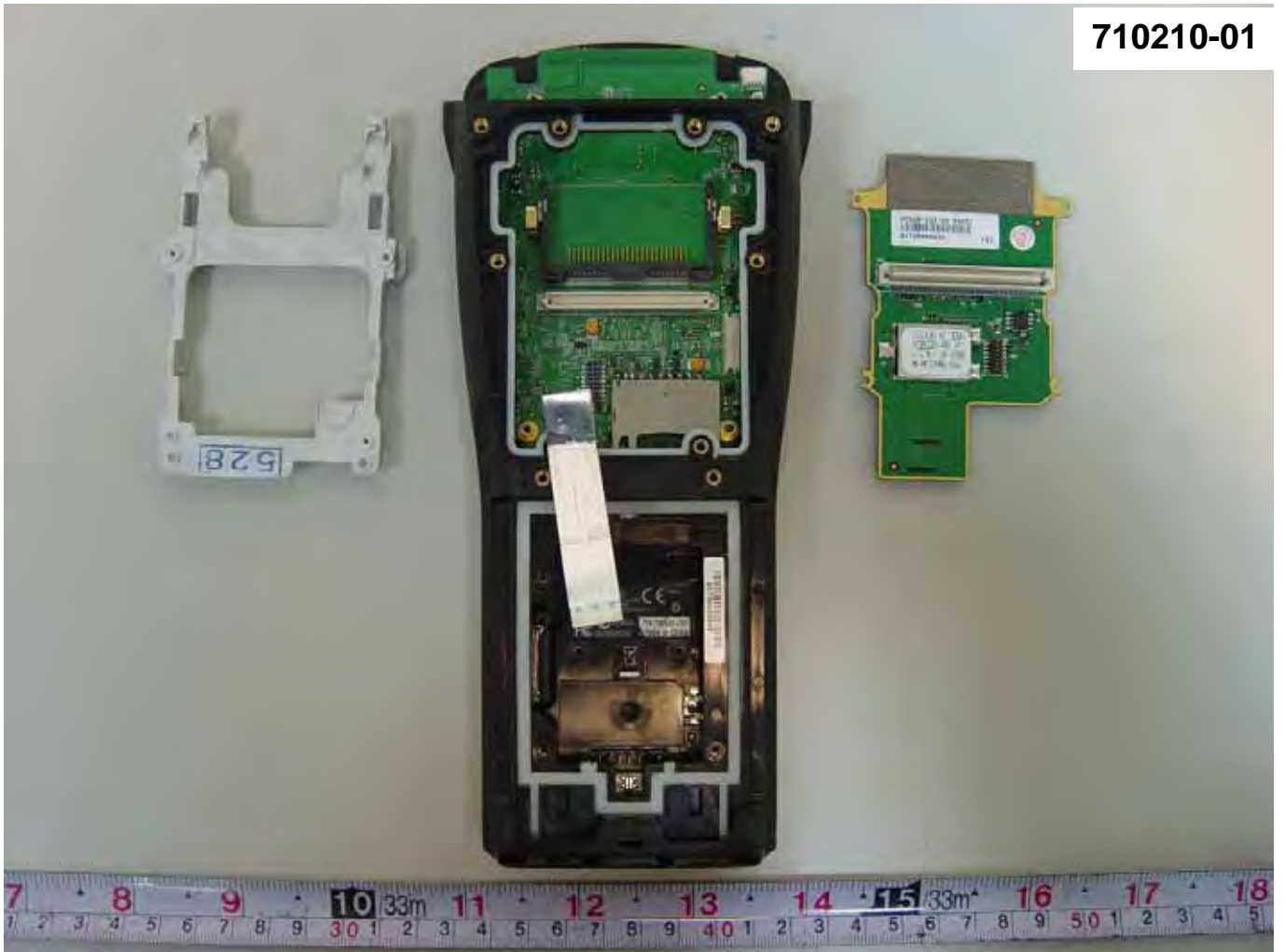


710210-01



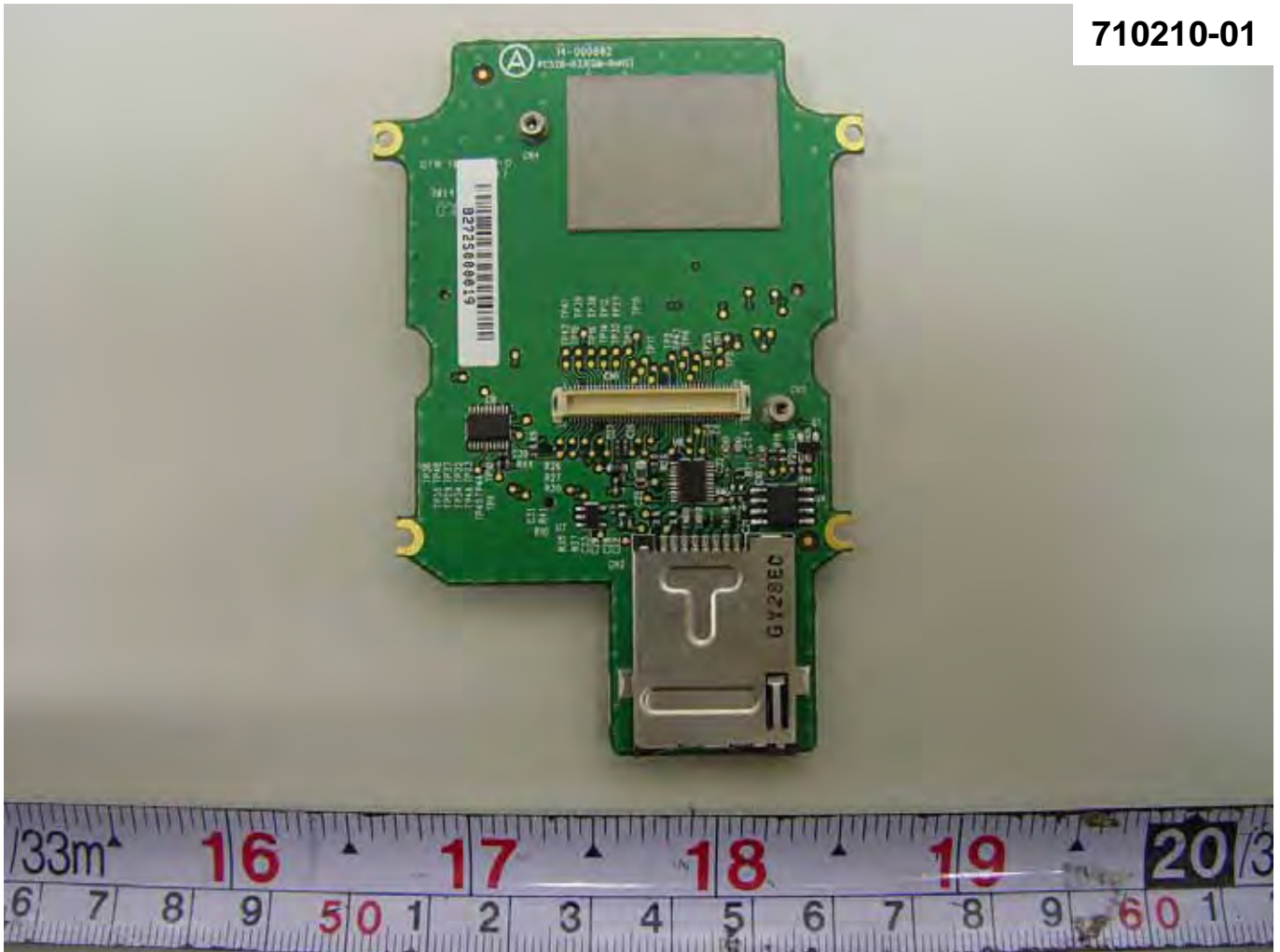


710210-01



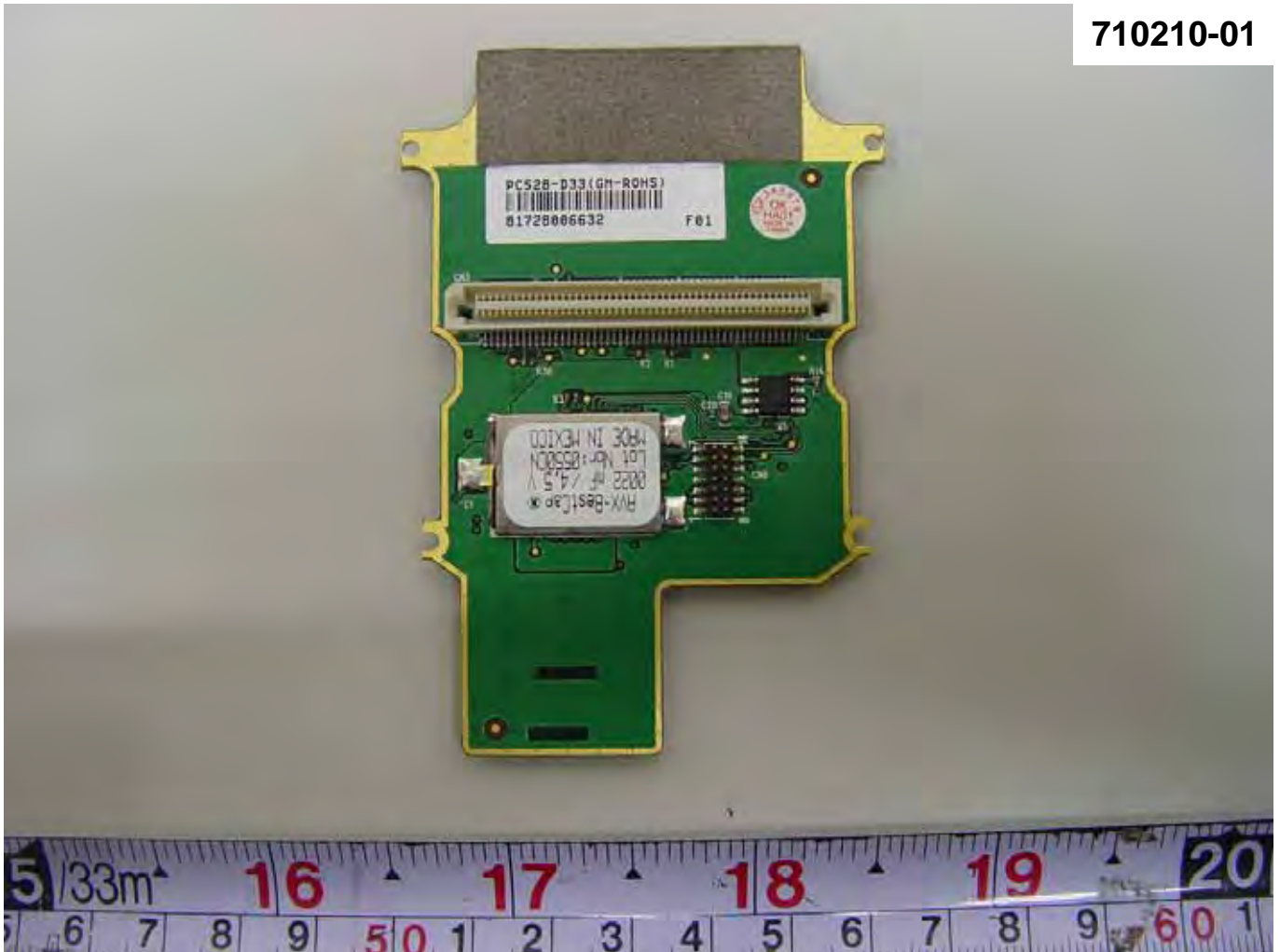


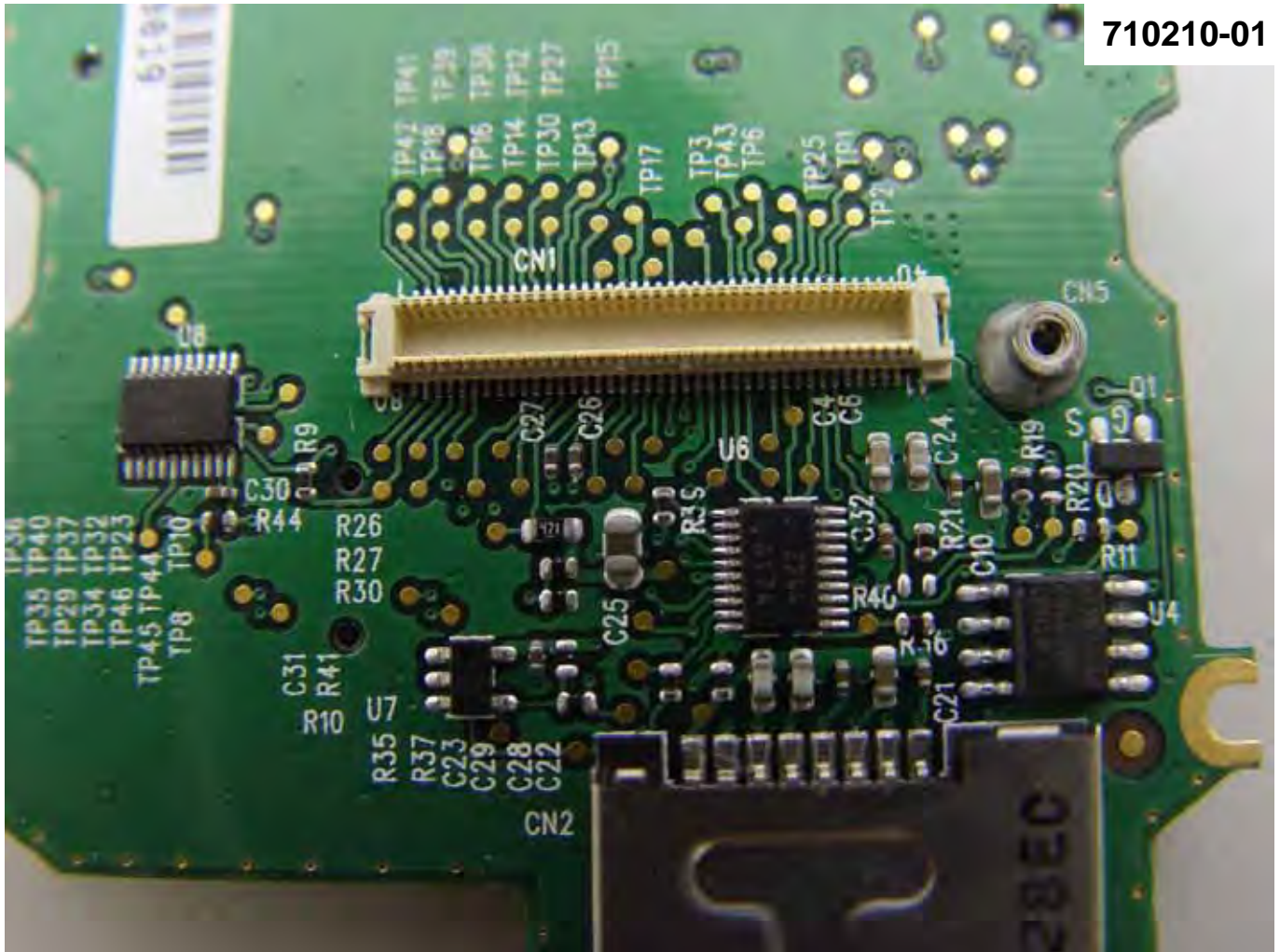
710210-01





710210-01

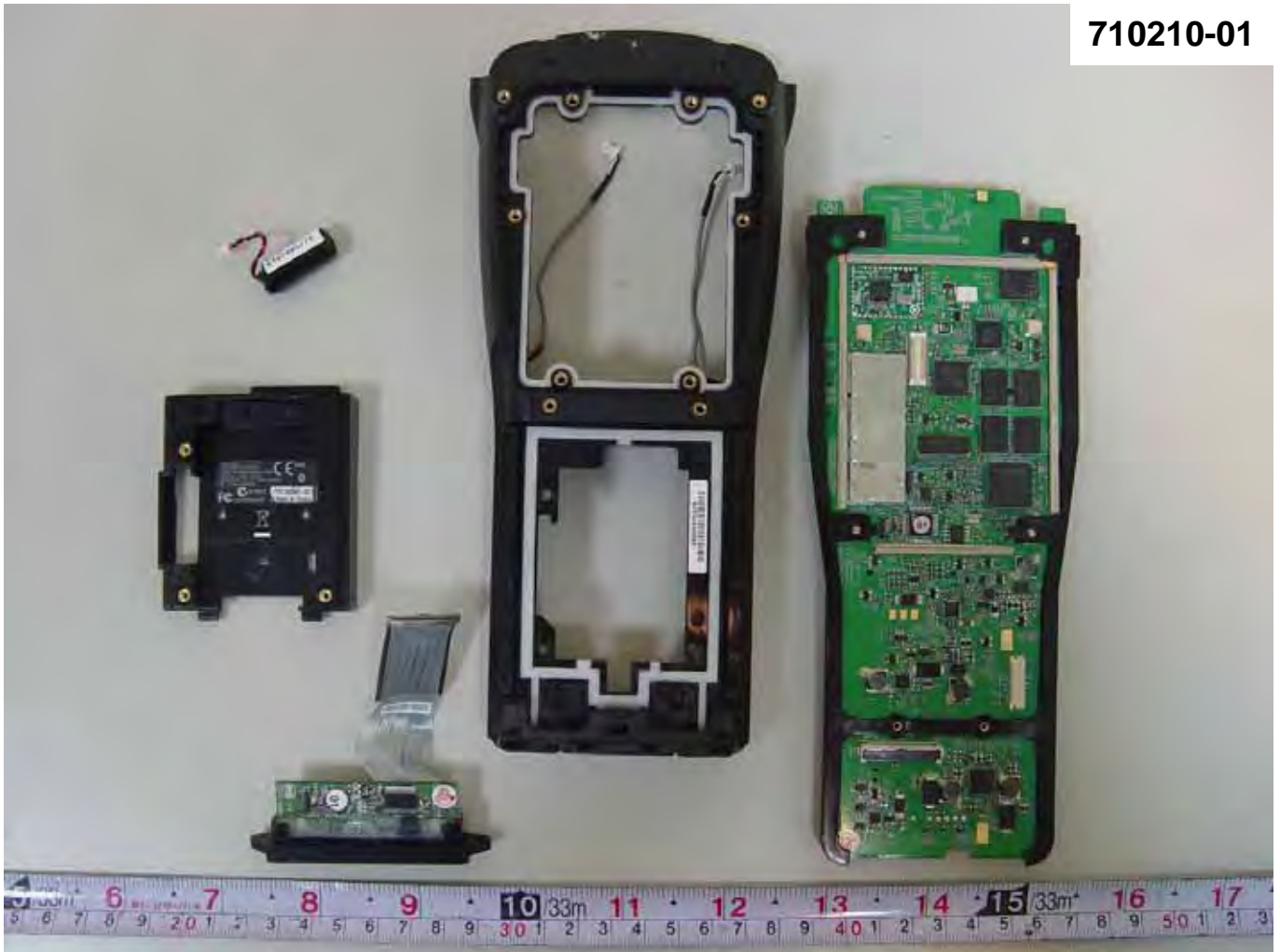






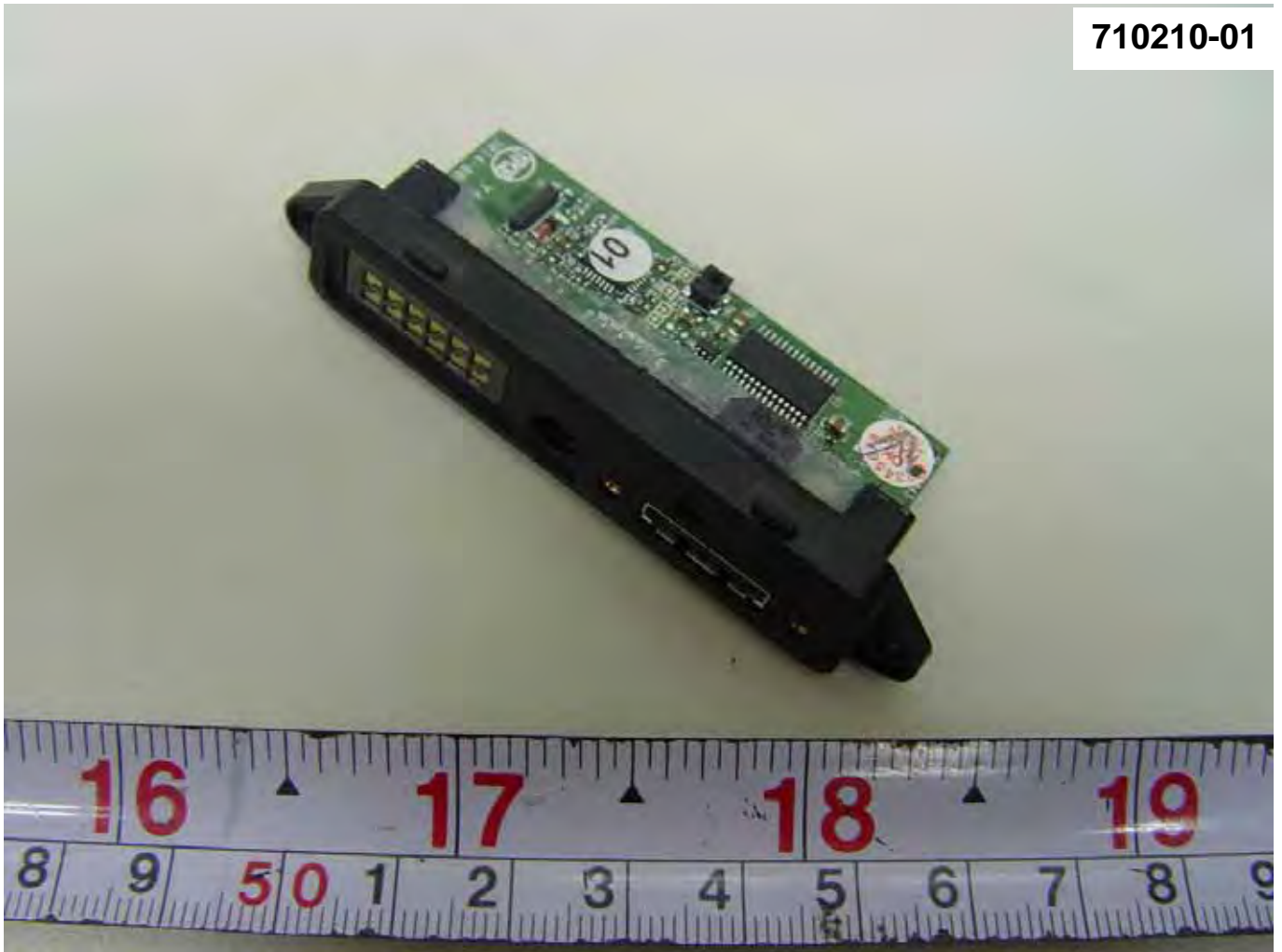


710210-01



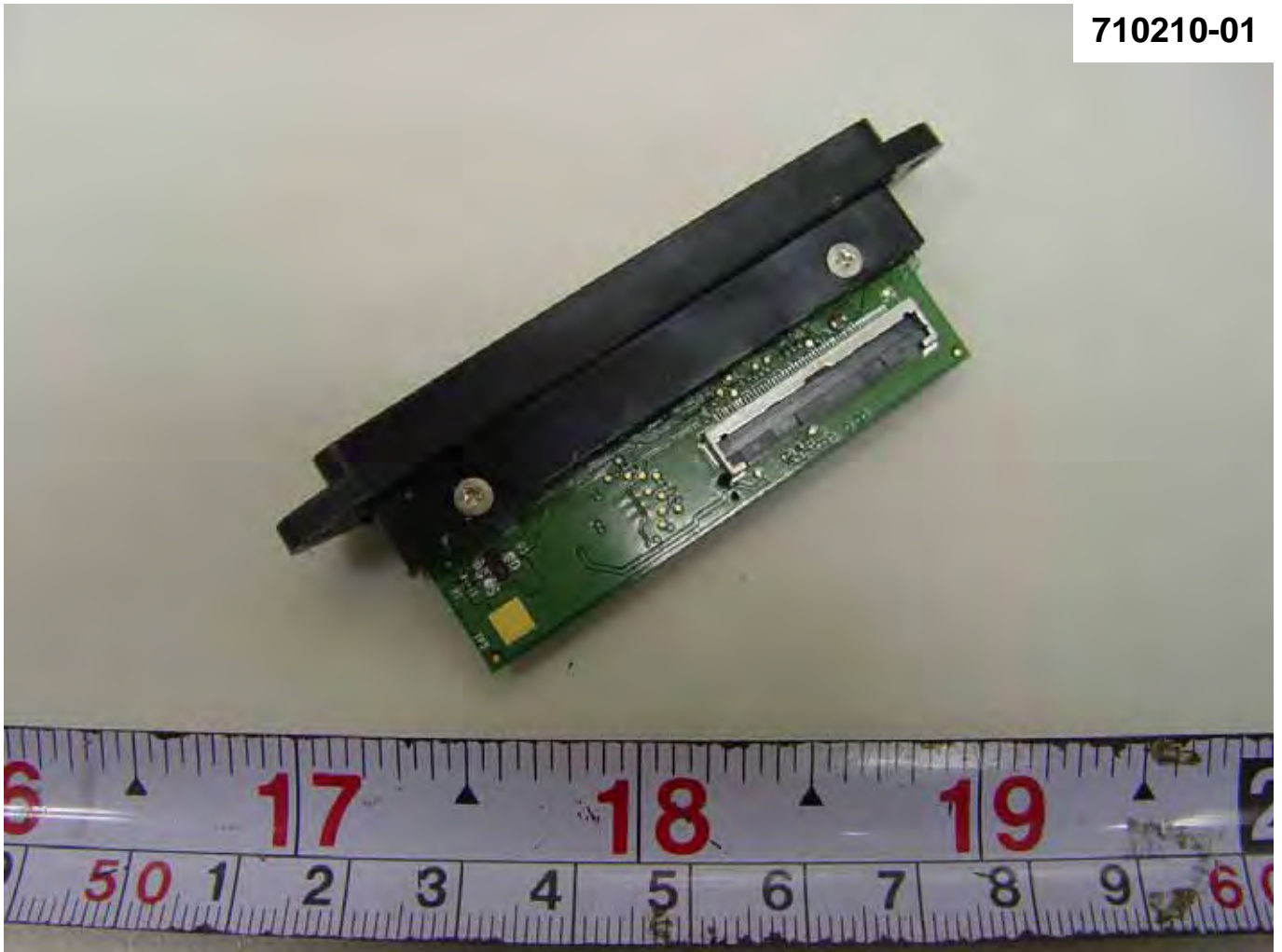


710210-01





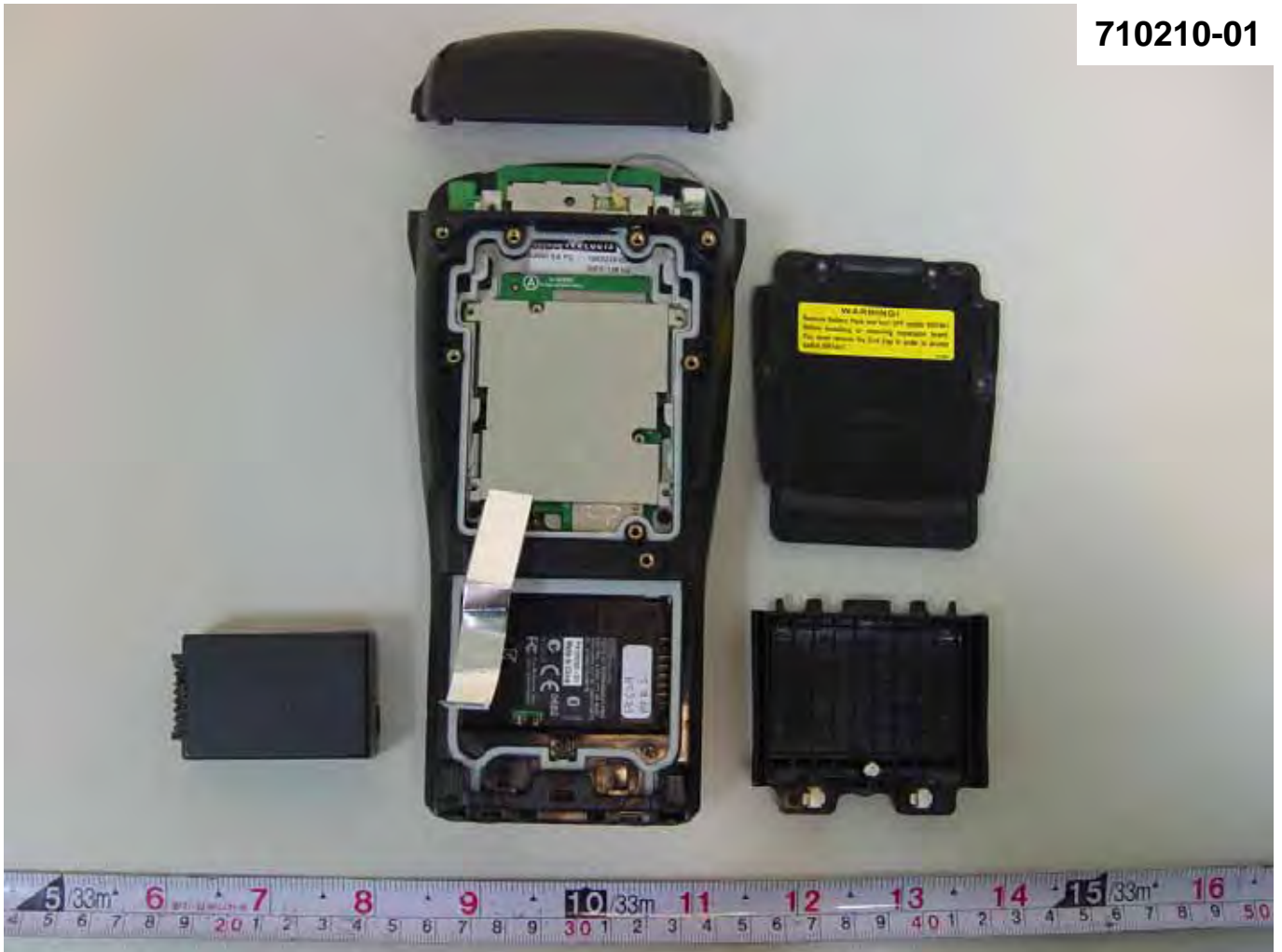
710210-01





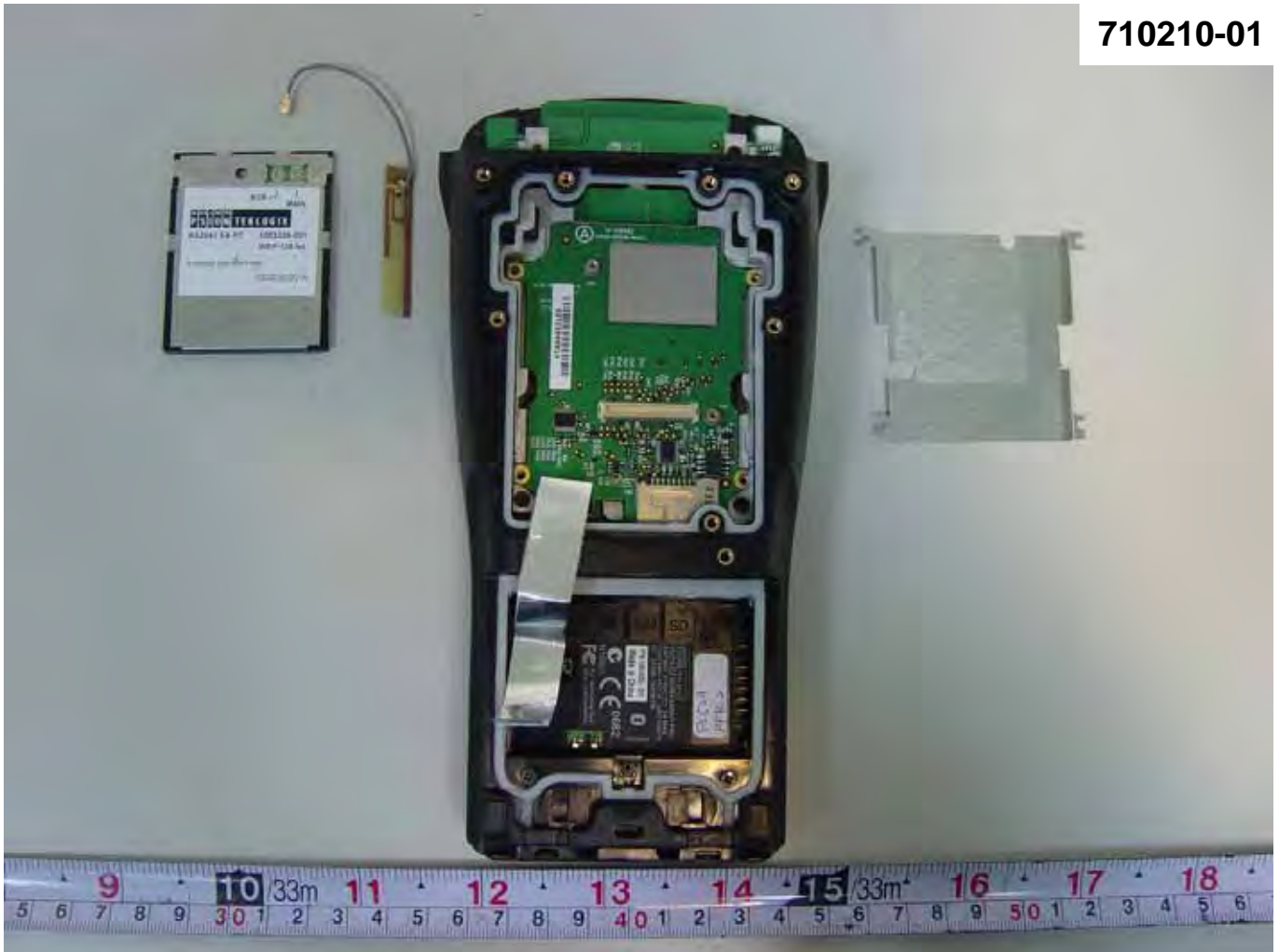
7527S

710210-01





710210-01





710210-01





710210-01





710210-01





710210-01



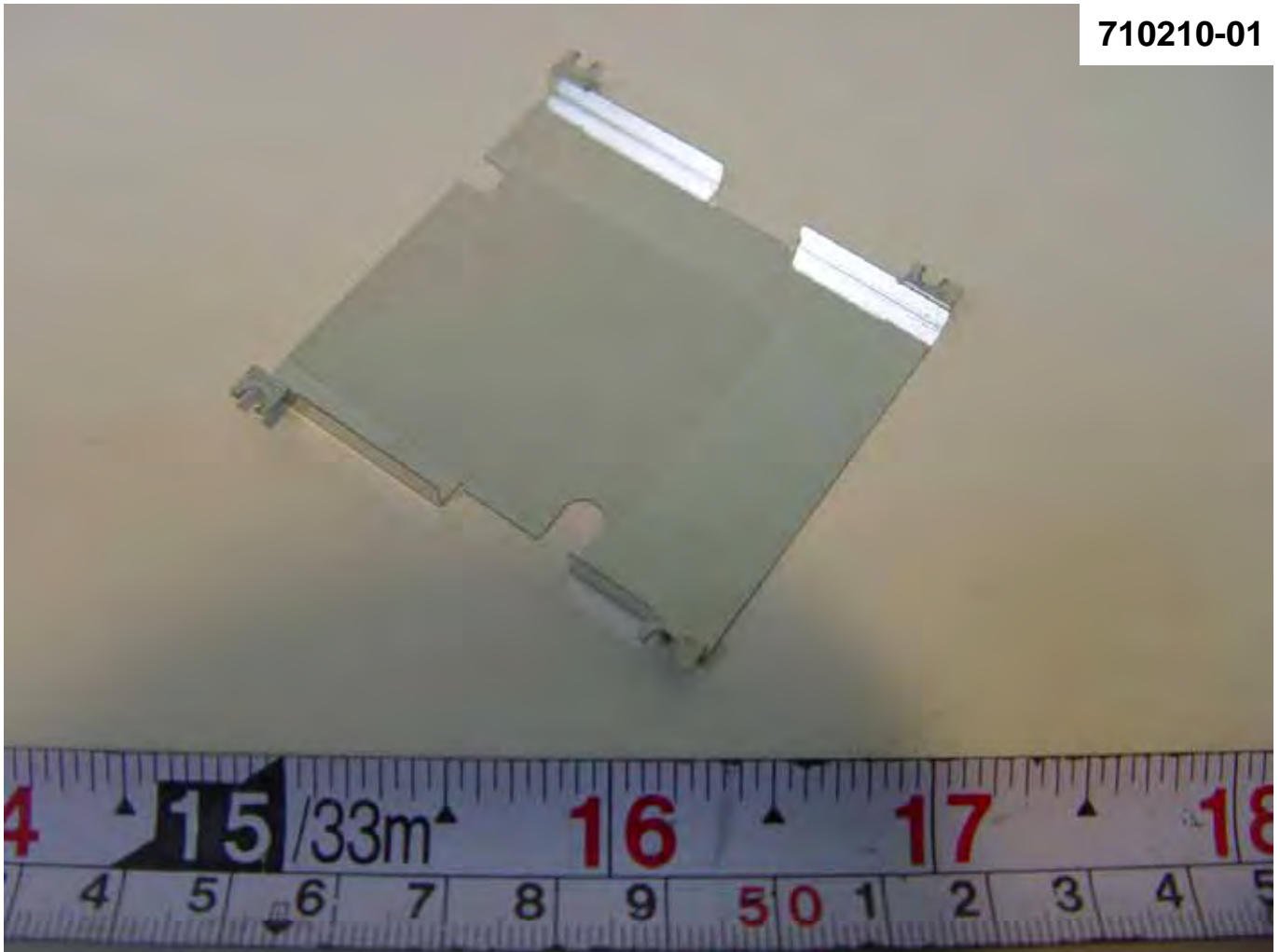


710210-01



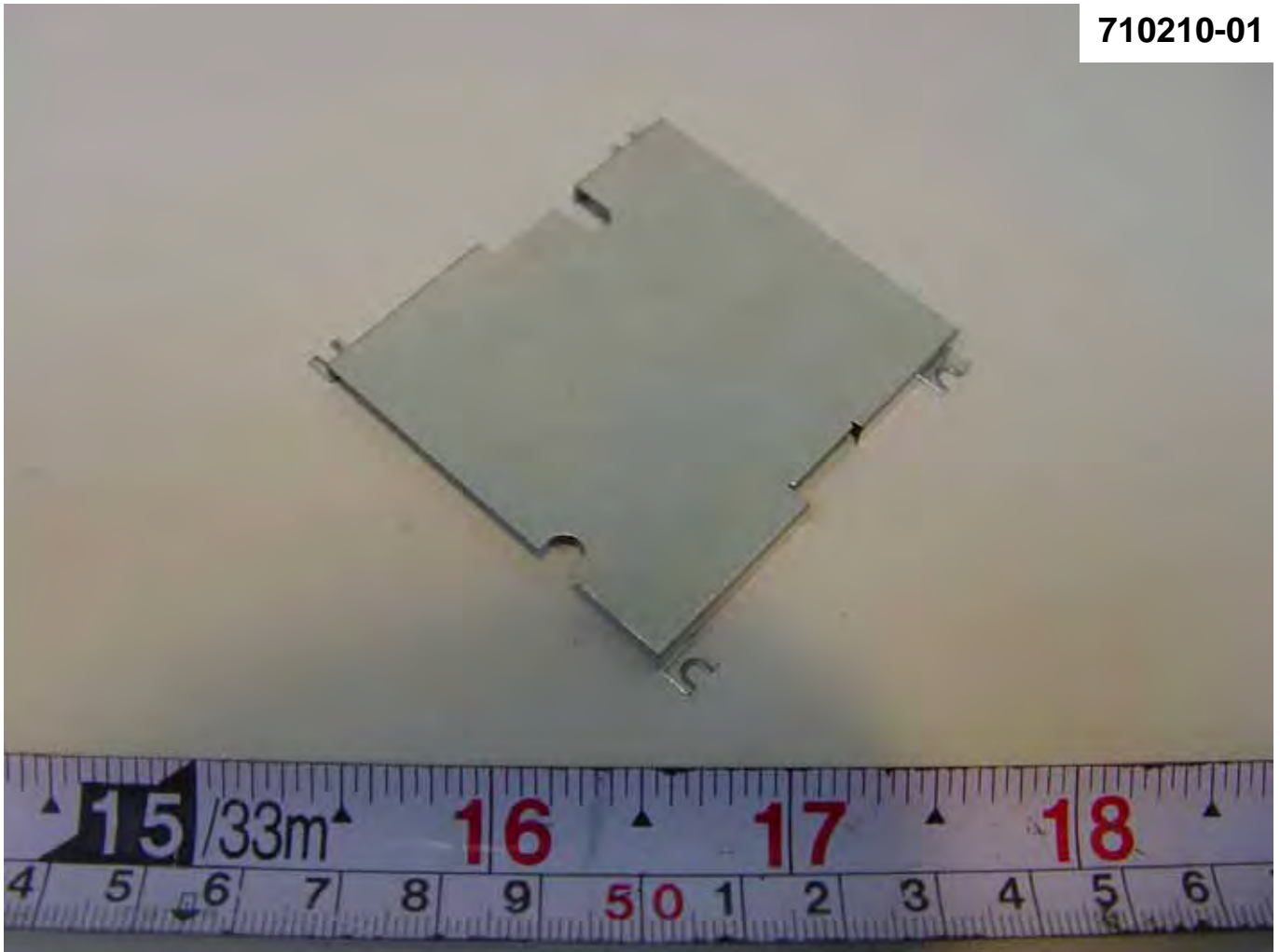


710210-01



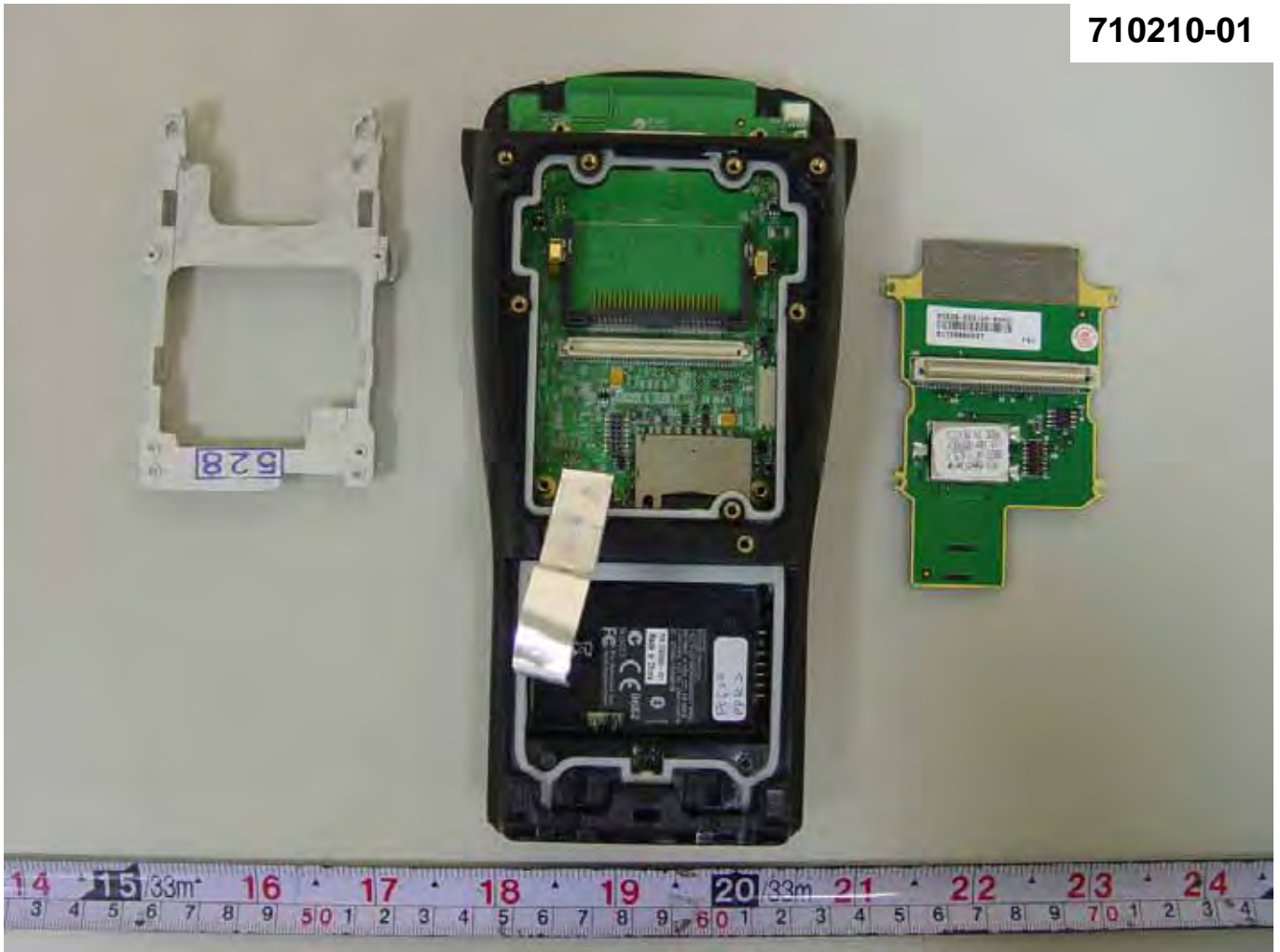


710210-01



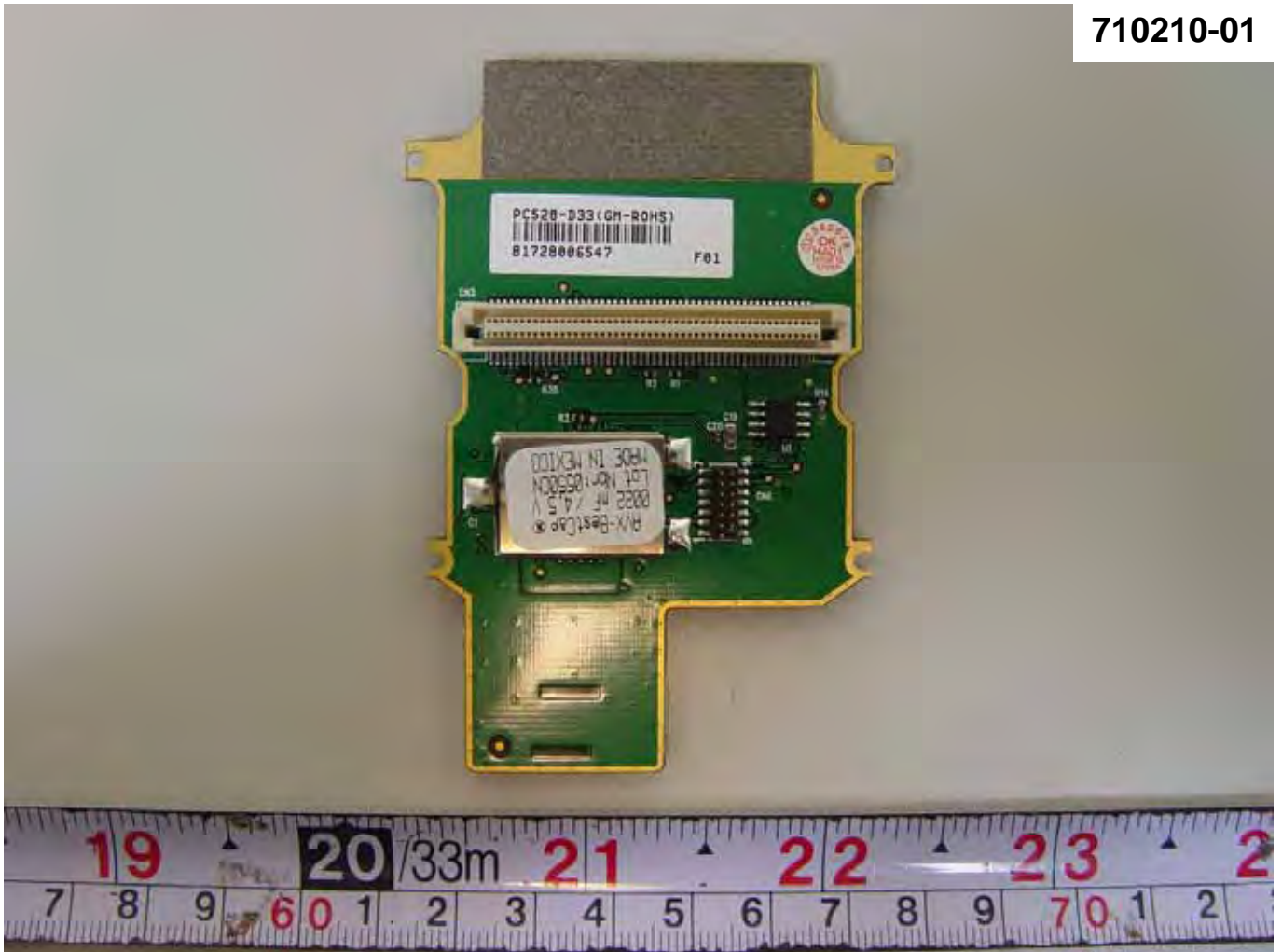


710210-01



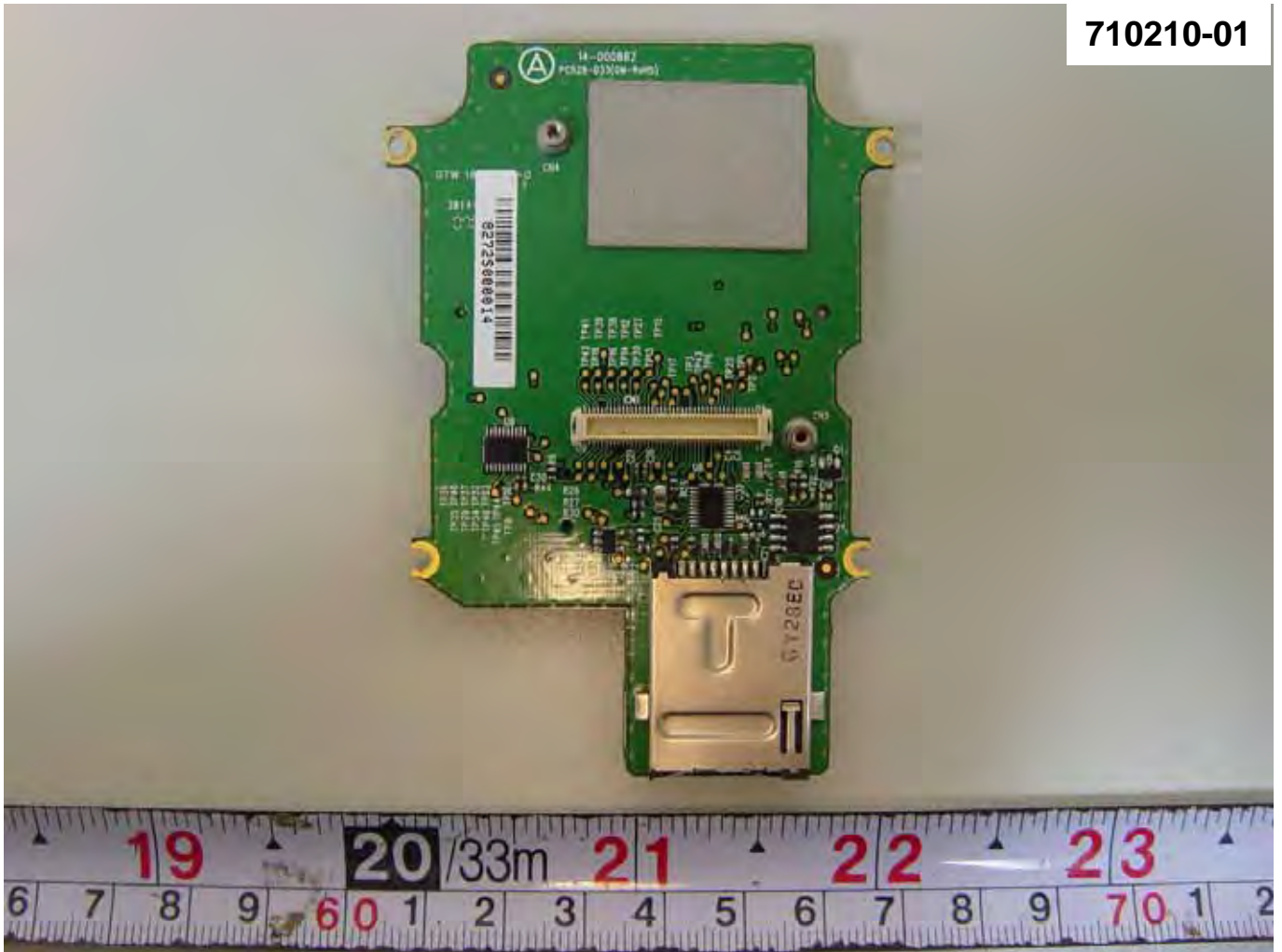


710210-01





710210-01



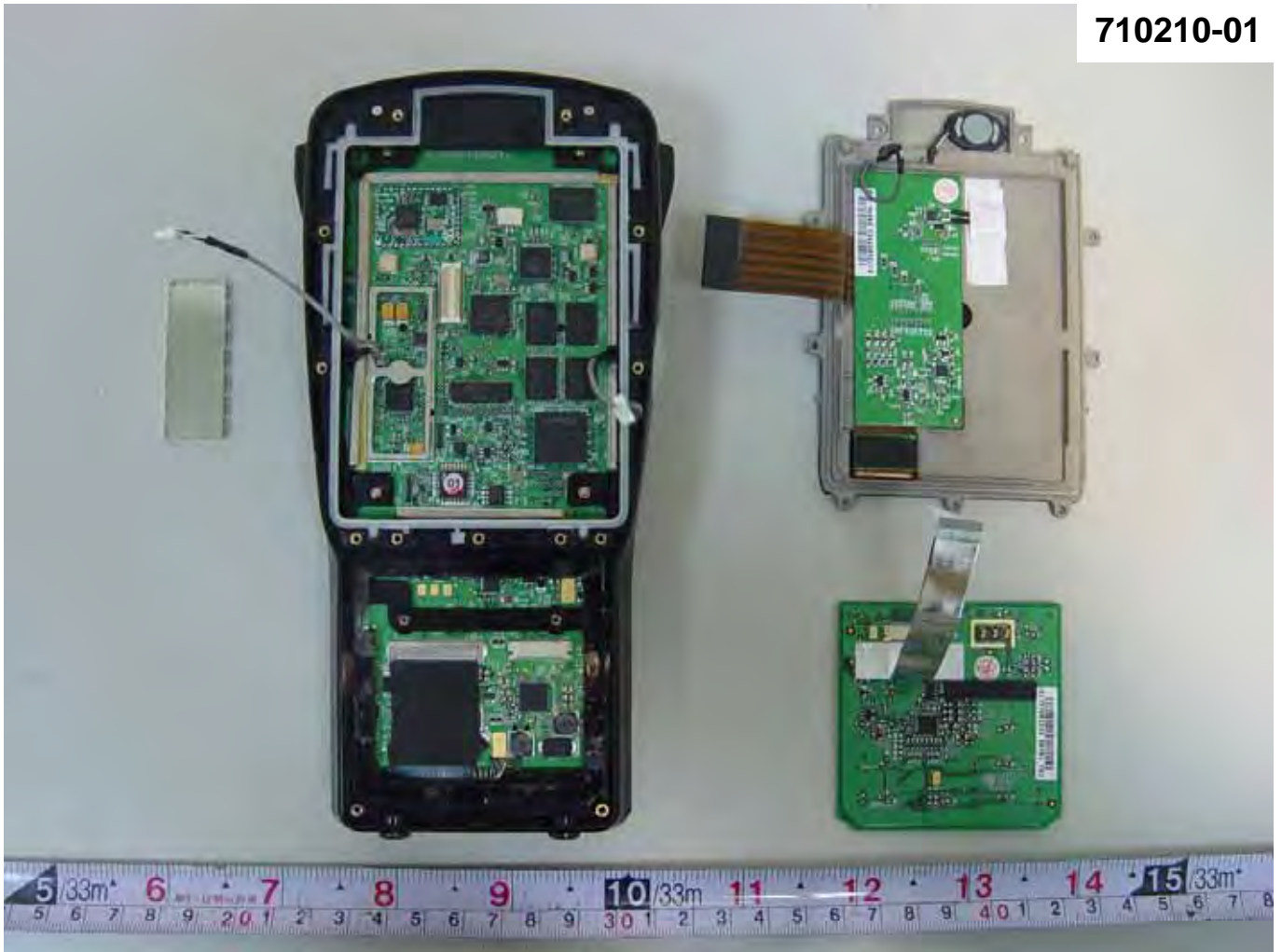


710210-01





710210-01







710210-01





710210-01



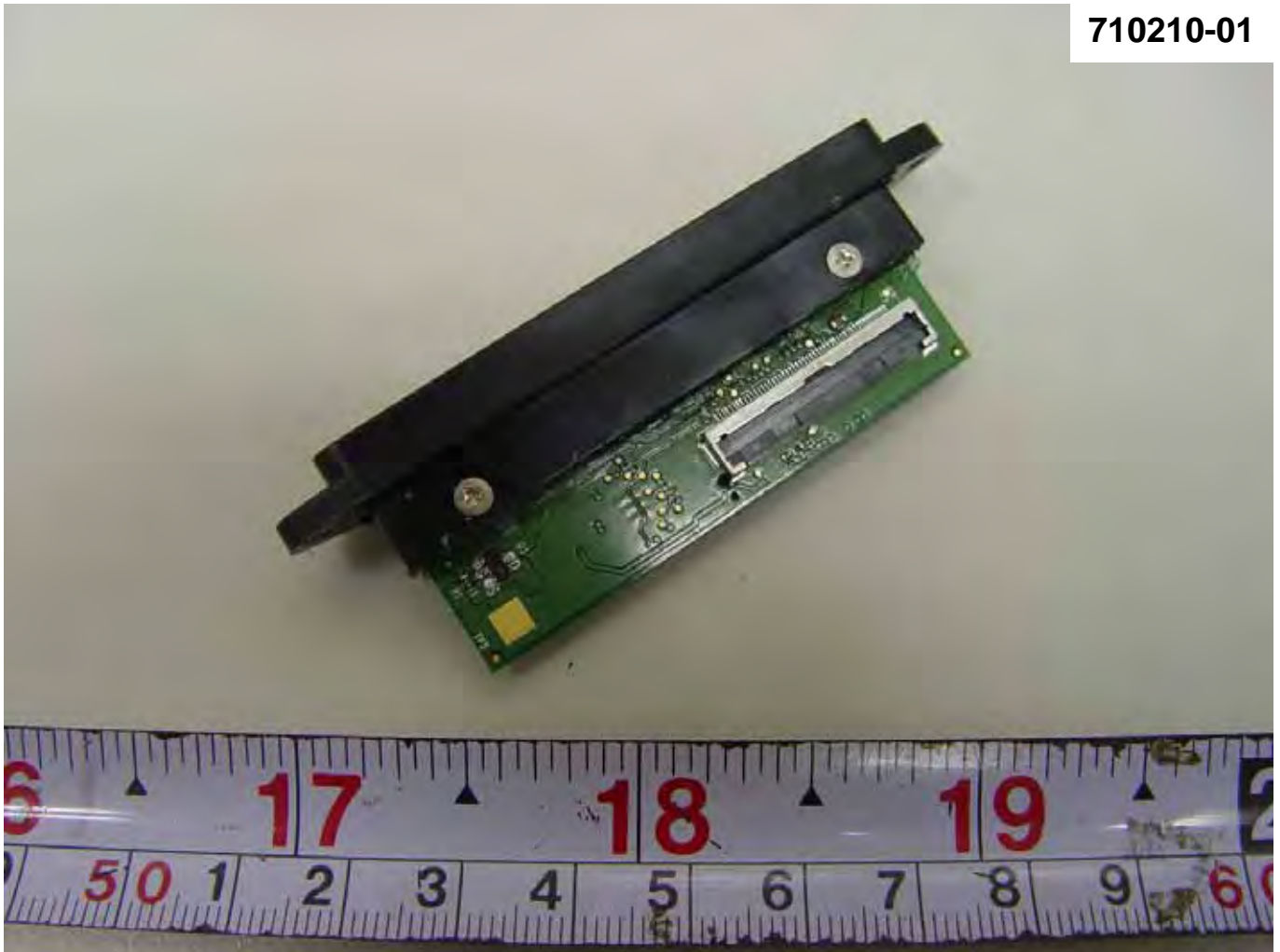


710210-01





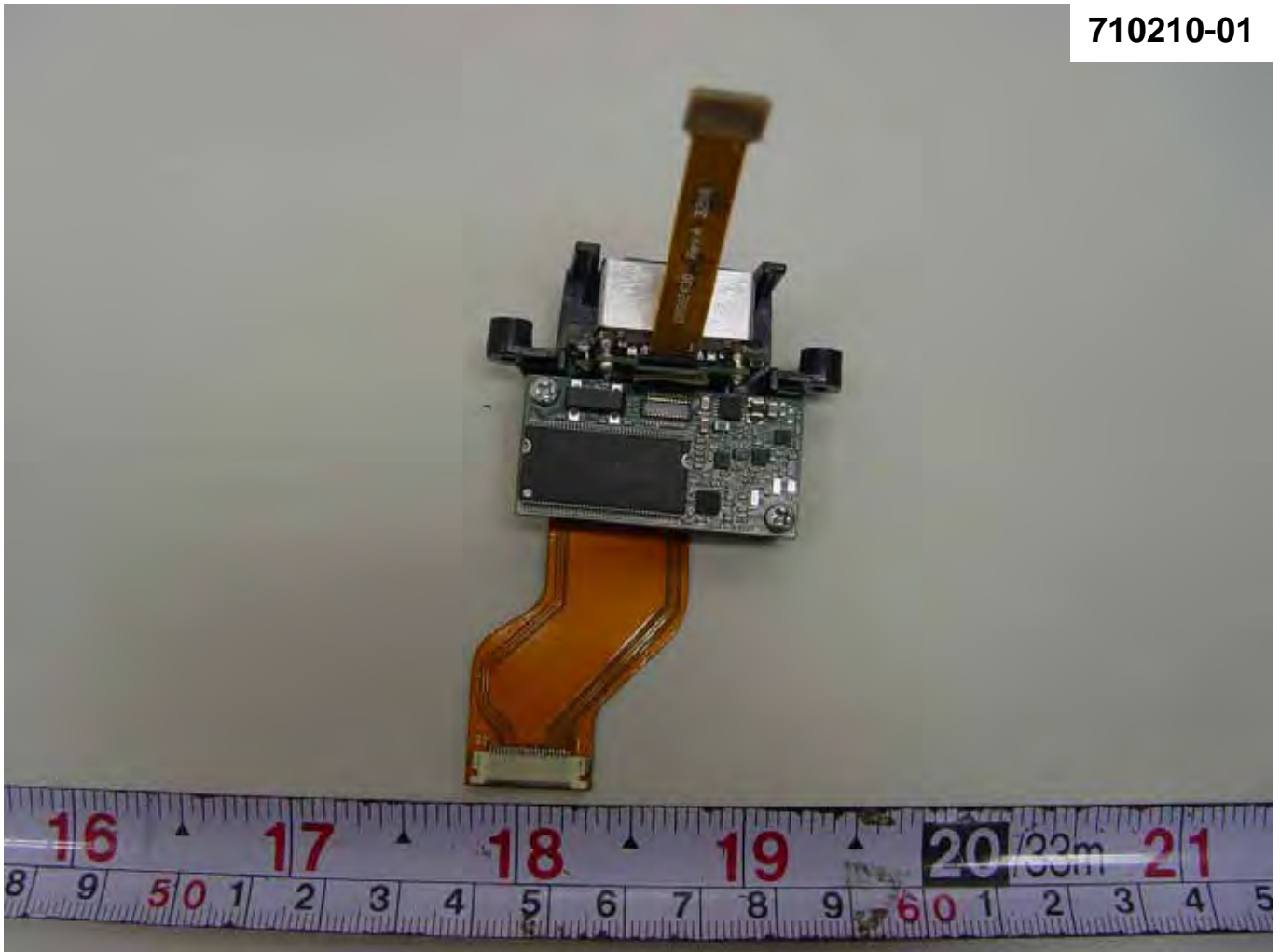
710210-01





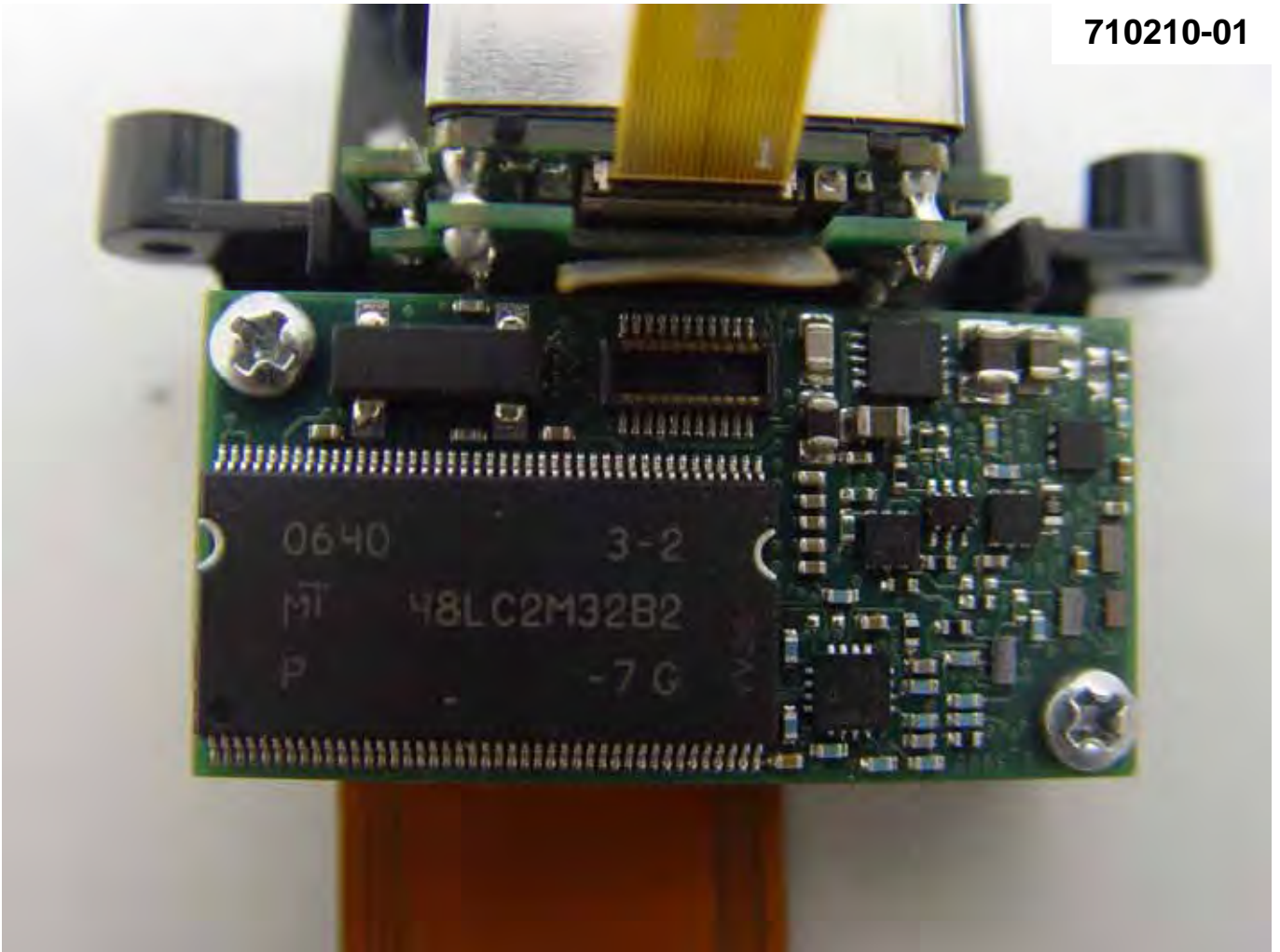
Accessory

710210-01



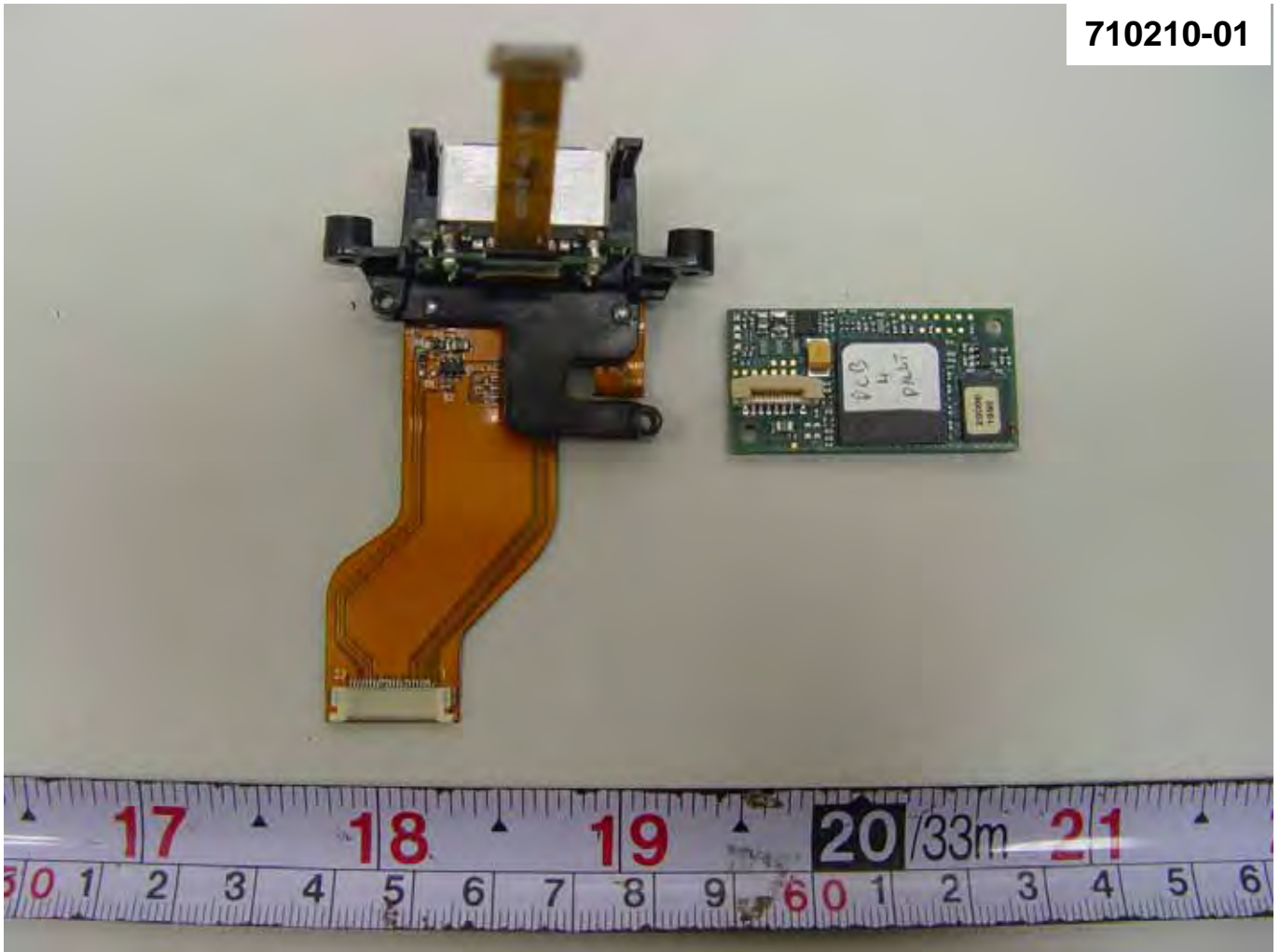


710210-01



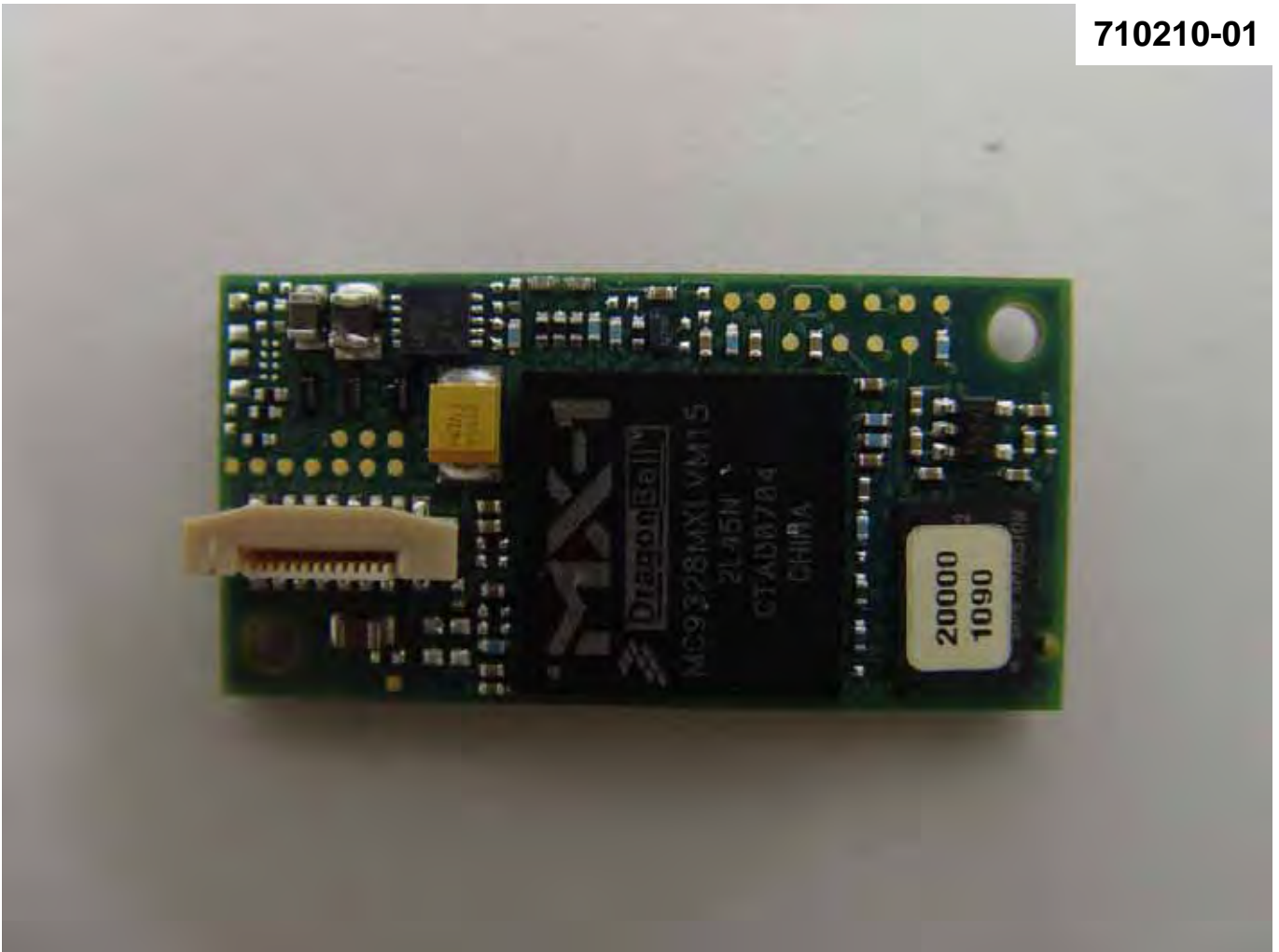


710210-01





710210-01



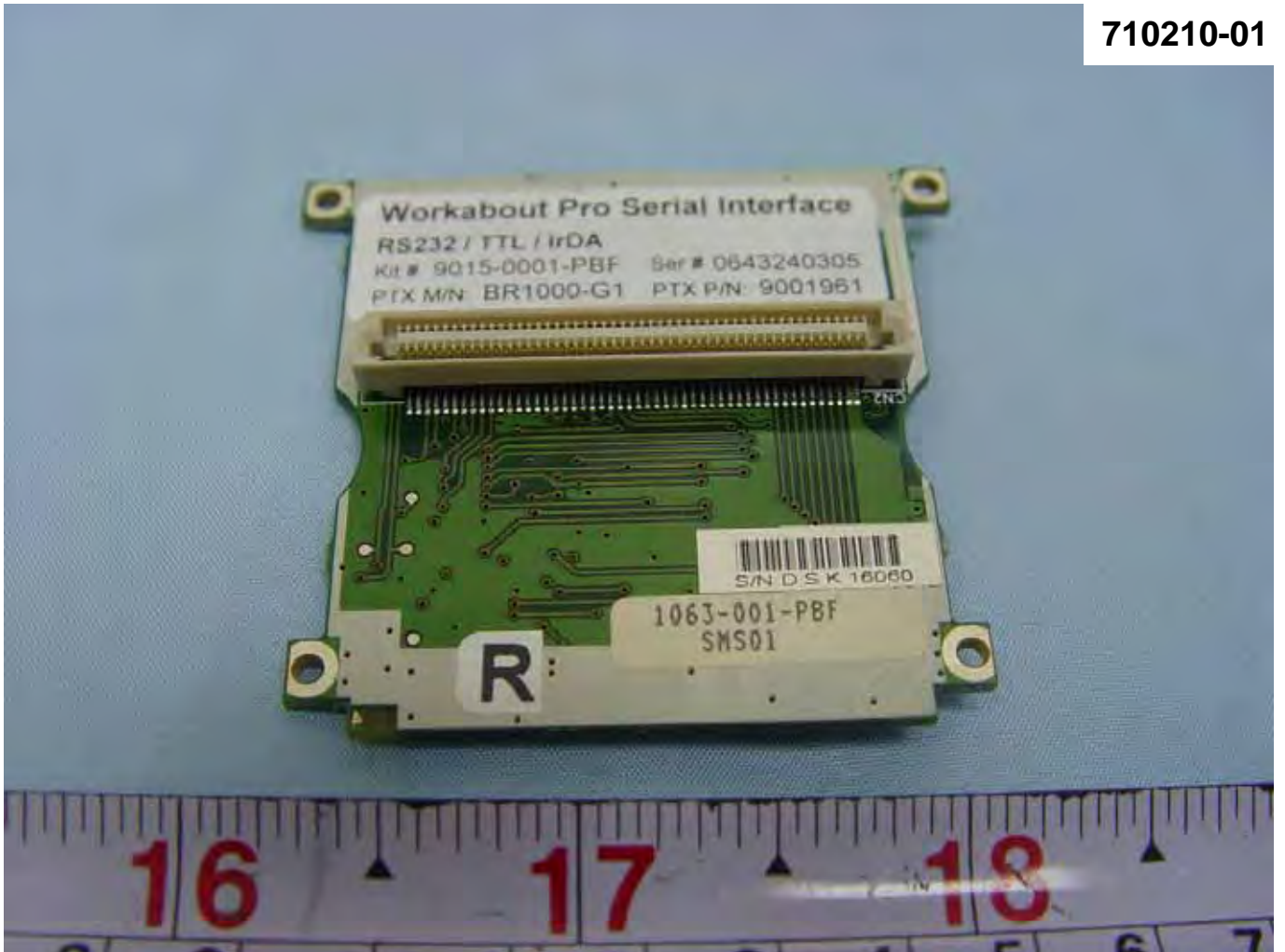


710210-01



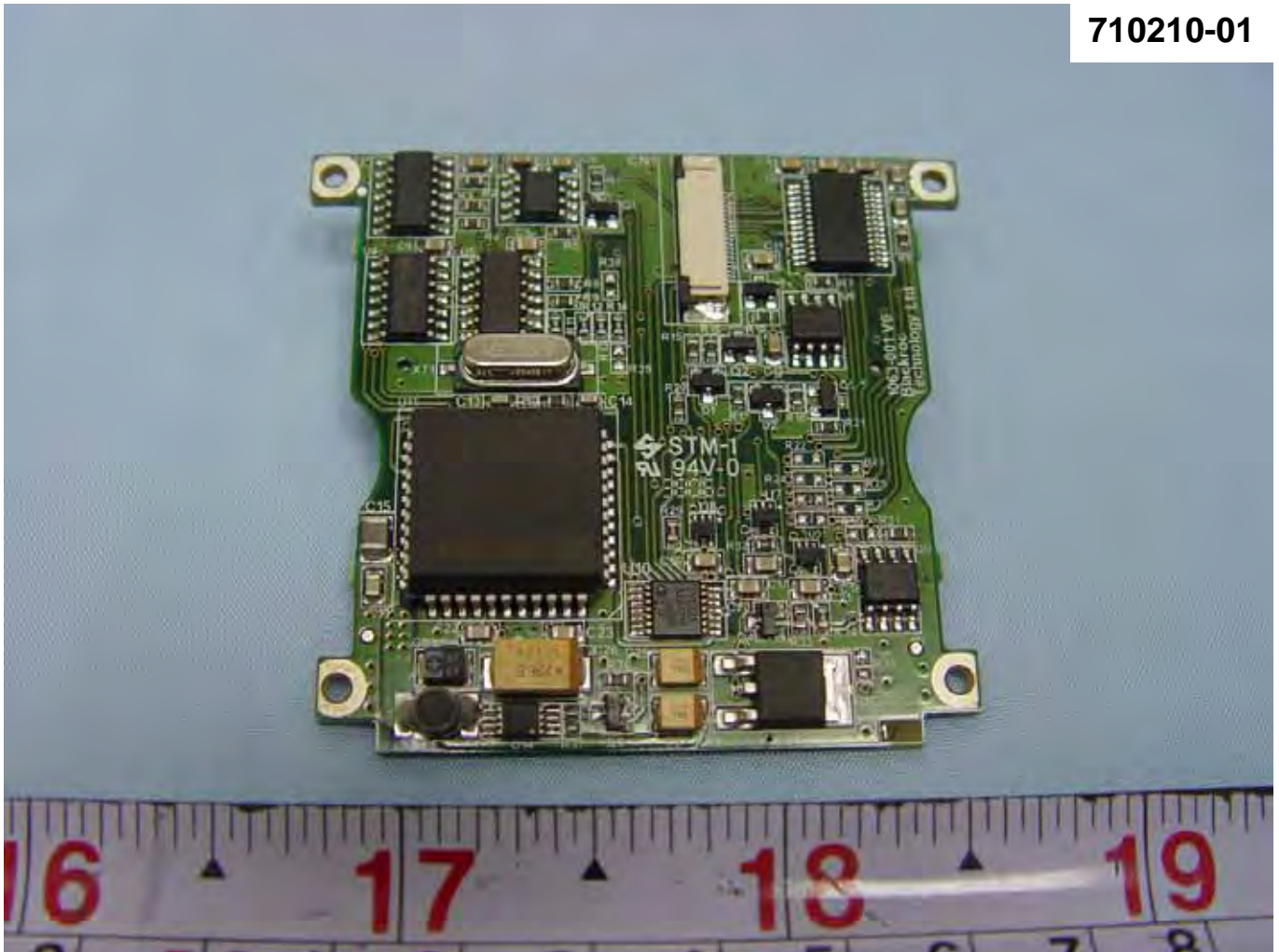


710210-01



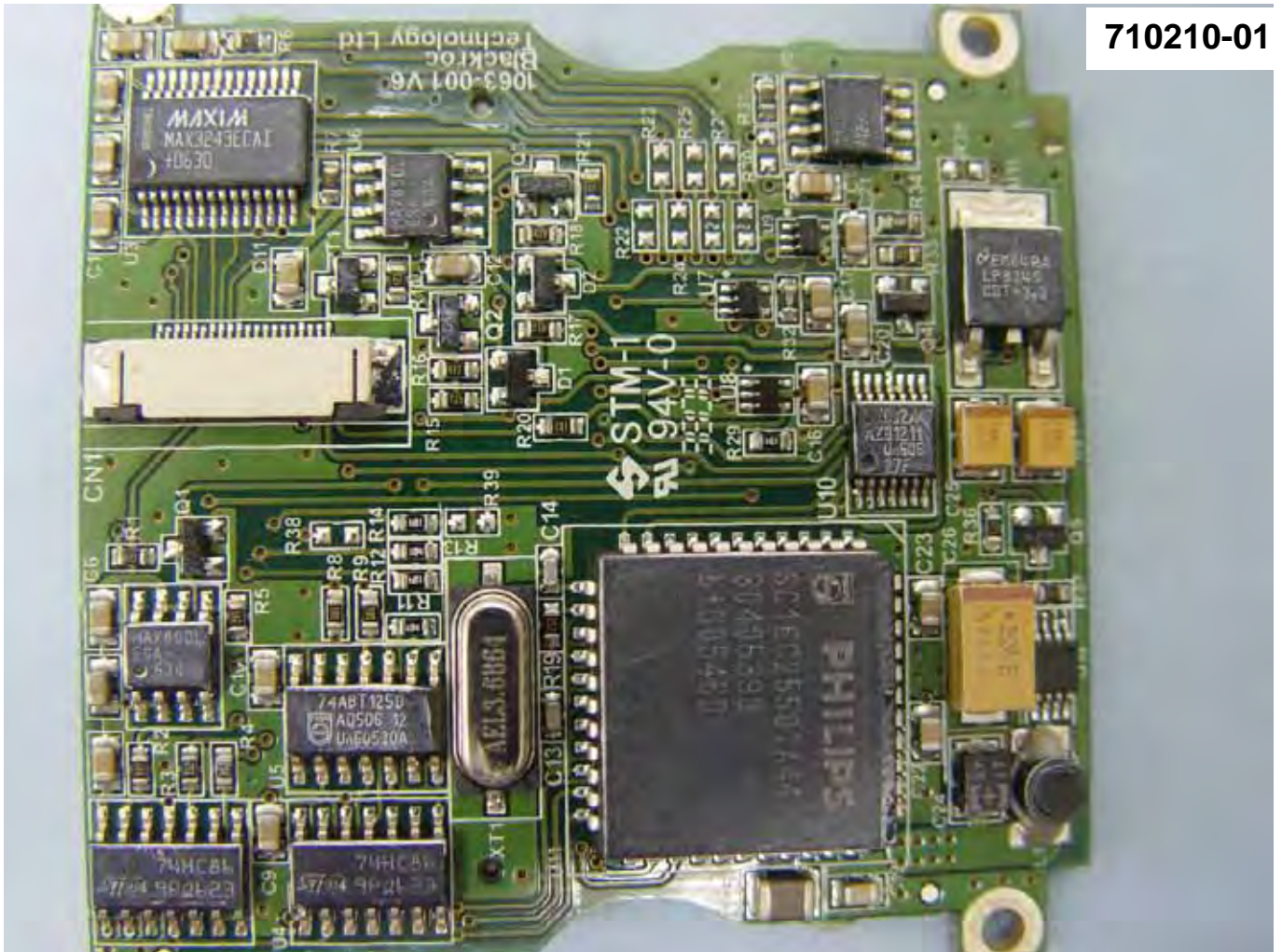


710210-01



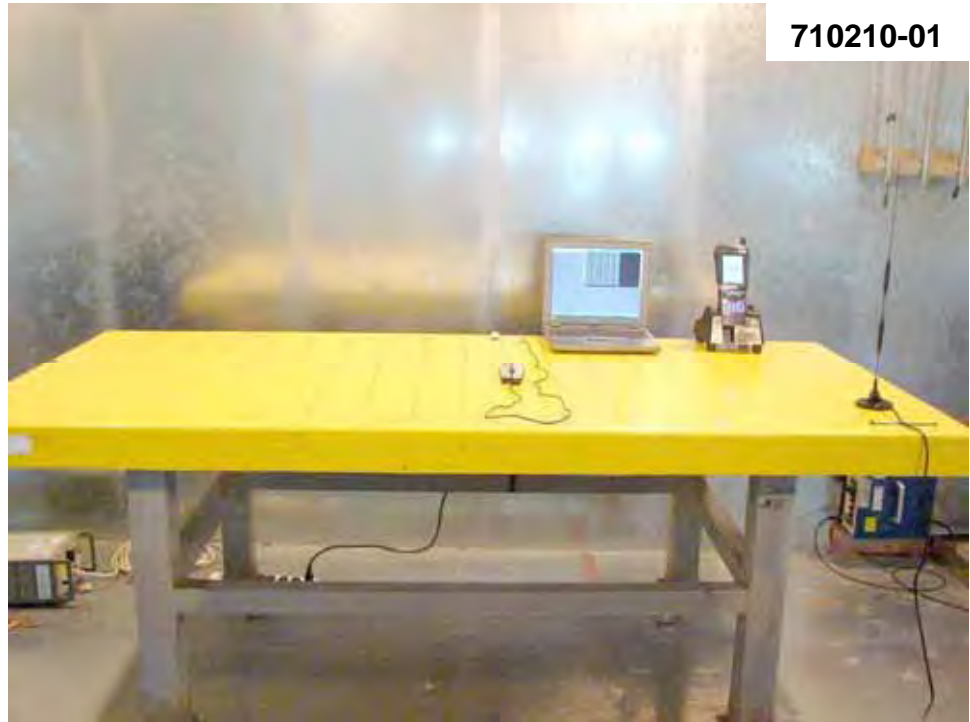


710210-01



Appendix C. Set up Photograph
Conducted Emission
Mode 1

FRONT VIEW



REAR VIEW



SIDE VIEW



Mode 2

FRONT VIEW



710210-01

REAR VIEW



710210-01

SIDE VIEW



**Radiation Emission
Mode 1~6**

FRONT VIEW



REAR VIEW



Mode 7~8

FRONT VIEW

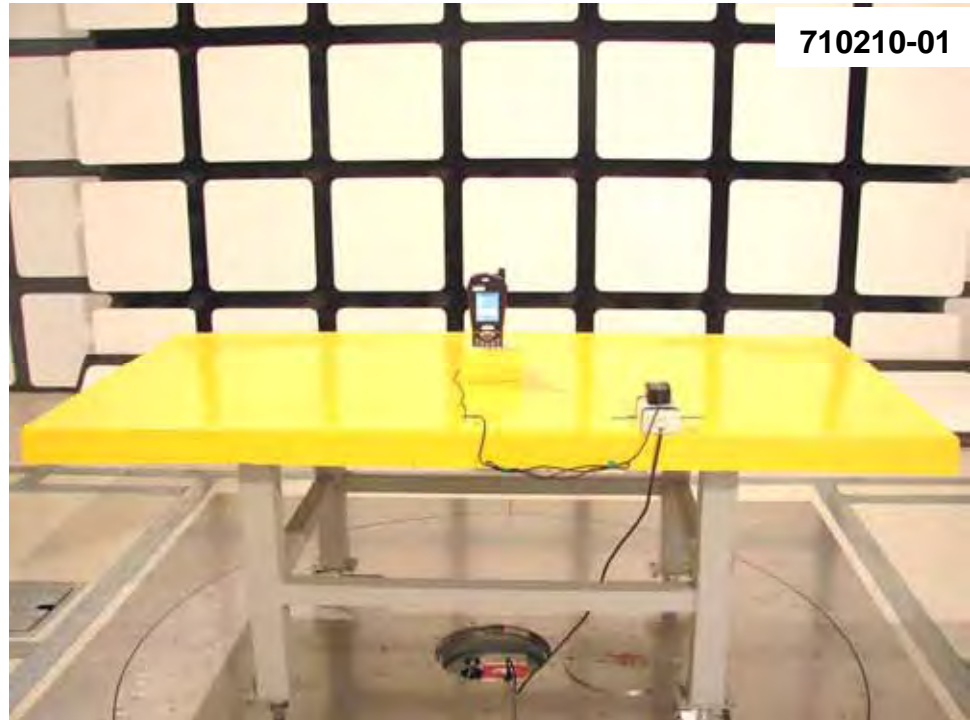


REAR VIEW

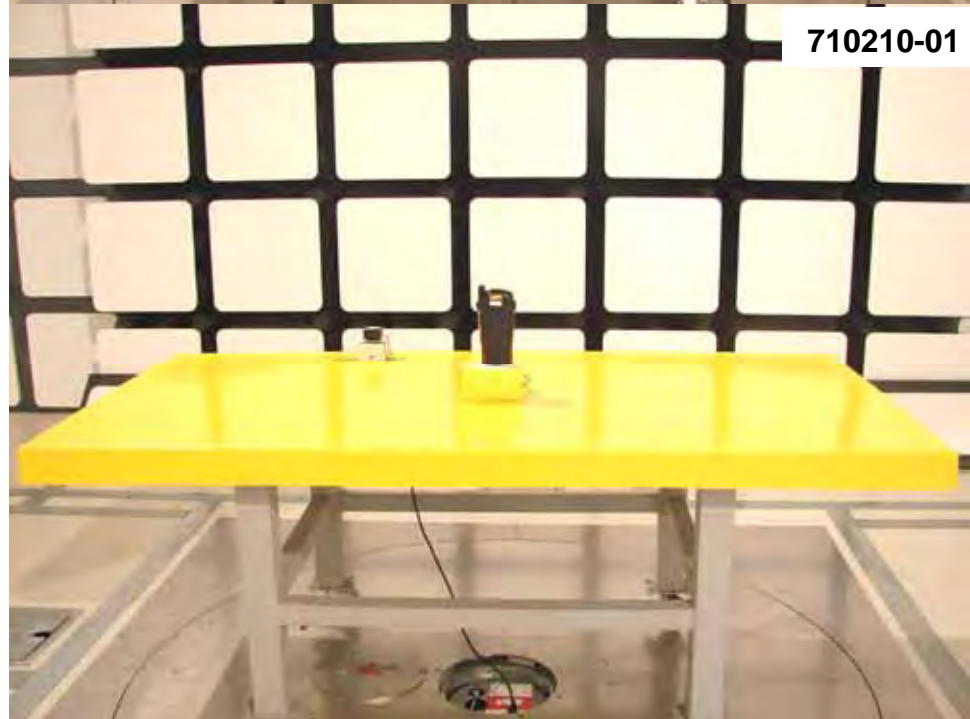


Mode 9~12 and 14~18

FRONT VIEW



REAR VIEW

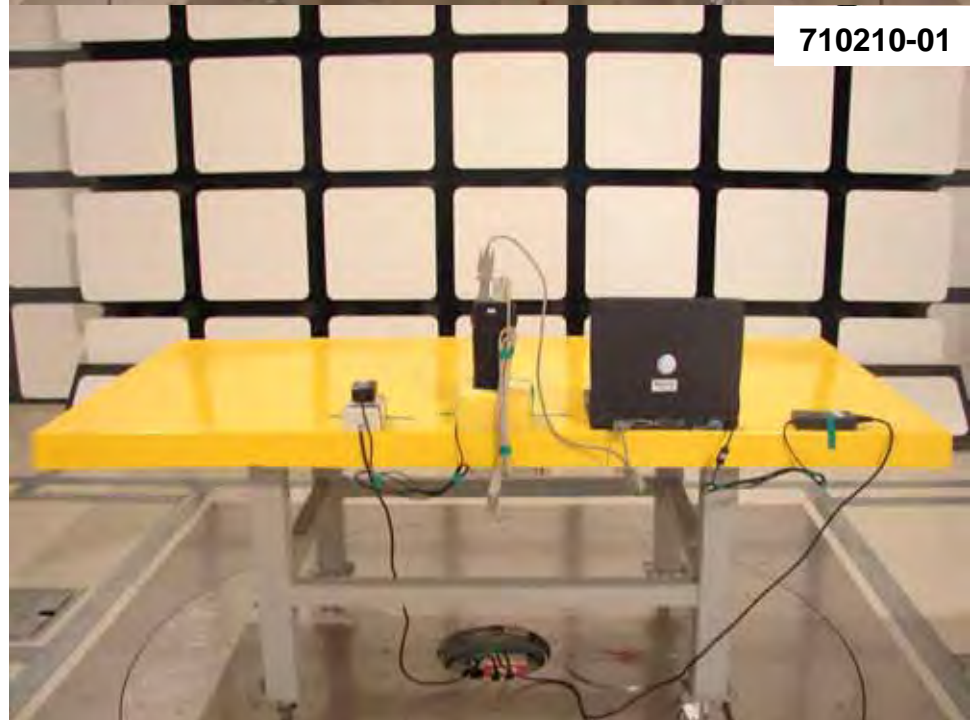


Mode 13

FRONT VIEW



REAR VIEW



Mode 19

FRONT VIEW



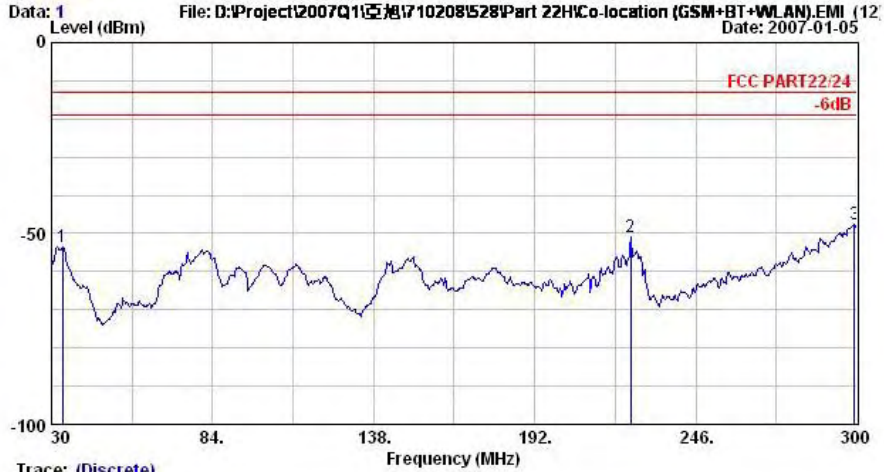
REAR VIEW





APPENDIX D. Part 15C RSE Data for WLAN+BT+GSM Co-location

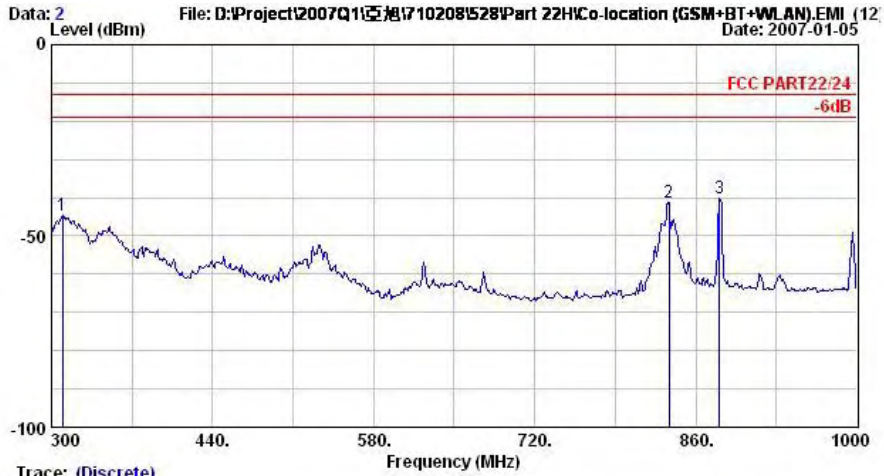
Horizontal Polarization



Trace: (Discrete)

- : 08CH06-HY
- : LF-SPURIOUS HORIZONTAL
- : EUT PDA with GPRS/EDGE+WLAN11g+BT
- : Power 120V ac/60Hz
- : Model FG 710211
- : Memo GSM850 Link;Ch189+11b Tx_CK01+Adaptor
- : Memo +BT Tx_CK00
- : Plane E2

	Freq	Level	Over	Limit	Read		
	MHz	dBm	dB	dBm	dBm	dB	Remark
1	33.8	-53.41	-40.41	-13.00	-51.33	-2.08	Peak
2	224.1	-50.99	-37.99	-13.00	-38.44	-12.55	Peak
3	299.2	-47.60	-34.60	-13.00	-37.65	-9.95	Peak



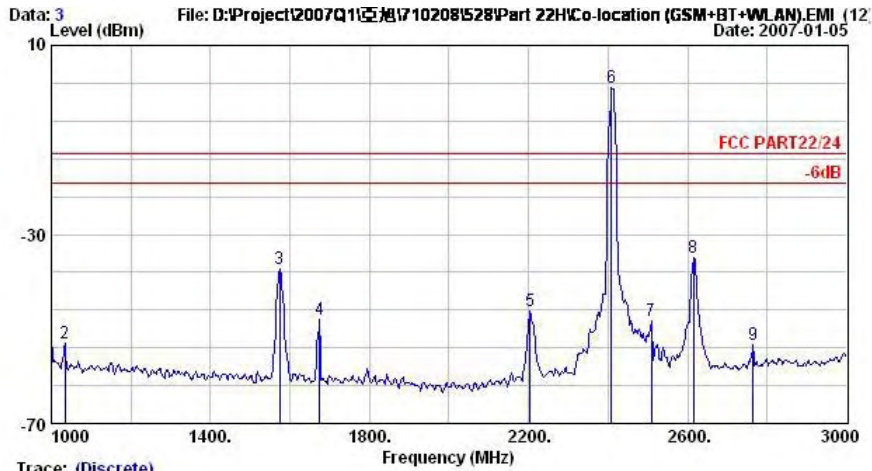
Trace: (Discrete)

Site : 08CH06-HY
 Condition : LF-SPURIOUS HORIZONTAL
 EUT : PDA with GPRS/EDGE+WLAN11g+BT
 Power : 120Vac/60Hz
 Model : PG 710211
 Memo : GSM850 Link;Ch189+11b Tx_Ck01+Adaptor
 Memo : +BT Tx_Ck00
 Plane : E2

	Freq	Level	Over	Limit	Read		
	MHz	dBm	Limit	Line	Level	Factor	Remark
			dB	dBm	dBm	dB	
1	309.8	-44.49	-31.49	-13.00	-34.87	-9.61	Peak
2	836.9	-41.21			-39.88	-1.33	Peak
3	880.3	-40.06			-39.14	-0.91	Peak

Remark:

- #2: MS Signal
- #3: BS Signal



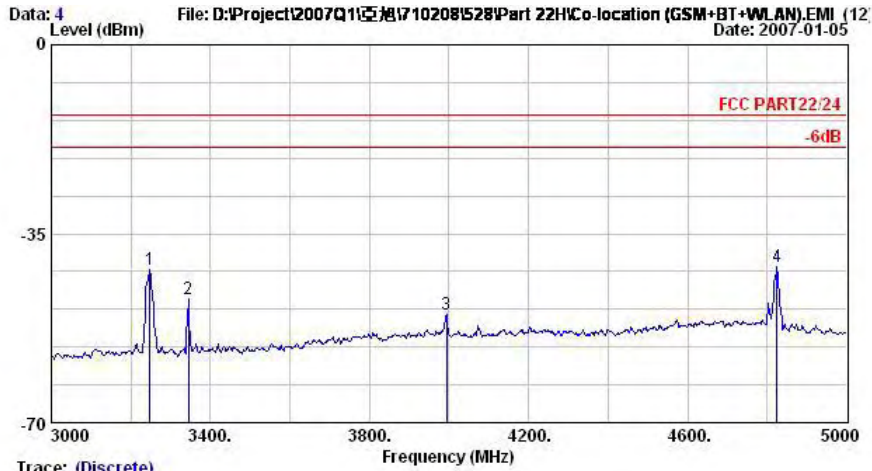
Trace: (Discrete)

Site : 08CH06-HY
 Condition : HF-SPURIOUS HORIZONTAL
 EUT : PDA with GPRS/EDGE+WLAN1g+BT
 Power : 120Vac/60Hz
 Model : PG 710211
 Memo : GSM850 Link;Ch189+11b Tx_Ch01+Adaptor
 Memo : +BT Tx_Ch00
 Plane : E2

	Freq	Level	Over	Limit	Read		Remark	Pol/Phase
	MHz	dBm	Limit	Line	Level	Factor		
			dB	dBm	dBm	dB		
1	1000.0	-52.69	-39.69	-13.00	-54.49	1.80	Peak	HORIZONTAL
2	1034.0	-53.02	-40.02	-13.00	-54.80	1.78	Peak	HORIZONTAL
3	1574.0	-37.34	-24.34	-13.00	-37.71	0.37	Peak	HORIZONTAL
4	1674.0	-48.14	-35.14	-13.00	-48.36	0.22	Peak	HORIZONTAL
5	2204.0	-46.11	-33.11	-13.00	-46.83	0.72	Peak	HORIZONTAL
6 @	2408.0	0.93			0.04	0.89	Peak	HORIZONTAL
7	2508.0	-48.19	-35.19	-13.00	-49.39	1.20	Peak	HORIZONTAL
8	2614.0	-34.99	-21.99	-13.00	-36.83	1.84	Peak	HORIZONTAL
9	2764.0	-53.28	-40.28	-13.00	-56.32	3.04	Peak	HORIZONTAL

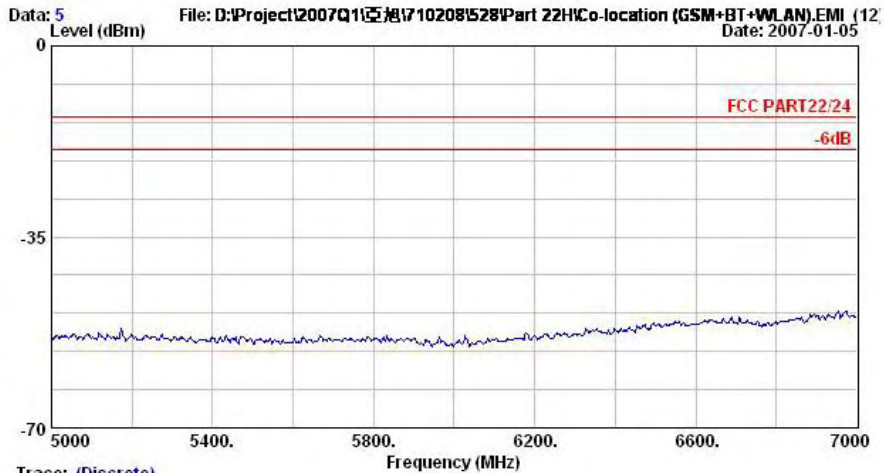
Remark:

- #6: WLAN Signal



Trace: (Discrete)
 Site : 08CH06-HY
 Condition : HF-SPURIOUS HORIZONTAL
 EUT : PDA with GPRS/EDGE+WLAN11g+BT
 Power : 120Vac/60Hz
 Model : PG 710211
 Memo : GSM850 Link;Ch189+11b Tx_Ch01+Adaptor
 : +BT Tx_Ch00
 Plane : E2

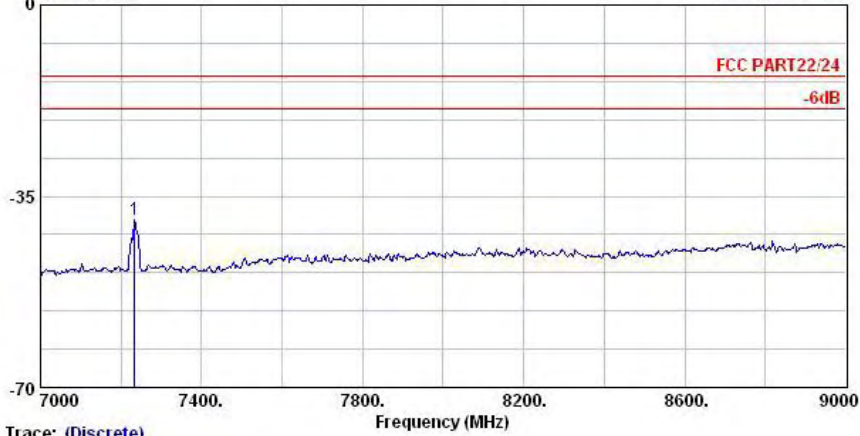
	Freq MHz	Level dBm	Over Limit dB	Limit Line dBm	Read Level dBm	Factor dB	Remark
1	3248.0	-41.59	-28.59	-13.00	-46.59	4.99	Peak
2	3344.0	-47.08	-34.08	-13.00	-52.49	5.41	Peak
3	3994.0	-49.86	-36.86	-13.00	-58.97	9.11	Peak
4	4824.0	-41.19	-28.19	-13.00	-52.74	11.55	Peak



Trace: (Discrete)
 Site : 08CH06-HY
 Condition : HF-SPURIOUS HORIZONTAL
 EUT : PDA with GPRS/EDGE+WLAN11g+BT
 Power : 120Vac/60Hz
 Model : PG 710211
 Memo : GSM850 Link;Ch189+11b Tx_Ch01+Adaptor
 : +BT Tx_Ch00
 Plane : E2



Data: 6 File: D:\Project\2007Q1\亞洲\710208\528\Part 22\Co-location (GSM+BT+WLAN).EMI (12 Date: 2007-01-05



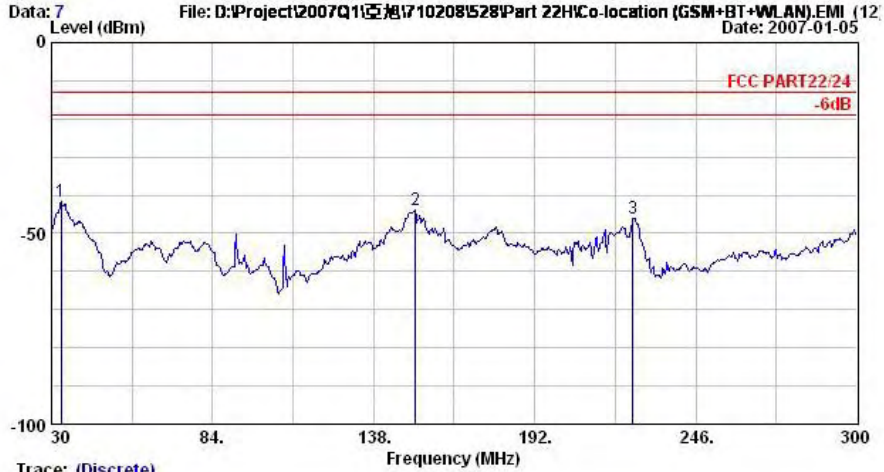
Site : 08CH06-HY
 Condition : HF-SPURIOUS HORIZONTAL
 EUT : PDA with GPRS/EDGE+WLAN11g+BT
 Power : 120V_{ac}/60Hz
 Model : PG 710211
 Memo : GSM850 Land;CH189+11b Tx_CM01+Adaptor
 Memo : +BT Tx_CM00
 Plane : E2

Trace: (Discrete)

	Freq	Level	Over	Limit	Read		
	MHz	dBm	dB	dBm	dBm	dB	Remark
1	7234.0	-39.39	-26.39	-13.00	-54.68	15.29	Peak



Vertical Polarization

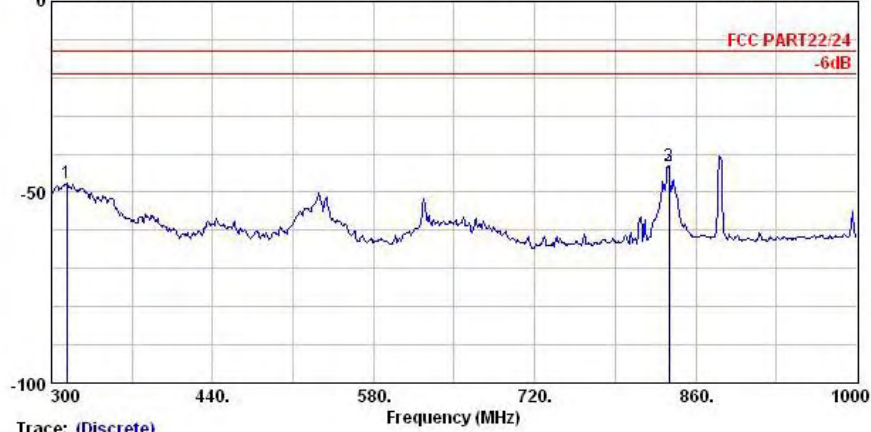


Trace: (Discrete)
 : 08CH06-HY
 Condition : LF-SFURIOUS VERTICAL
 EUT : PDA with GPRS/EDGE+WLAN11g+BT
 Power : 120V ac/60Hz
 Model : FG 710211
 Memo : GSM850 Link; CM189+11b Tx_CM01+Adaptor
 Memo : +BT Tx_CM00
 Plane : E2

	Freq	Level	Over	Limit	Read		
	MHz	dBm	dB	dBm	dBm	dB	Remark
1	33.2	-41.66	-28.66	-13.00	-31.77	-9.89	Peak
2	152.0	-43.95	-30.95	-13.00	-35.79	-8.16	Peak
3	224.9	-46.03	-33.03	-13.00	-37.98	-8.05	Peak



Data: 8 File: D:\Project\2007Q1\区域\710208\528\Part 22\ICo-location (GSM+BT+WLAN).EMI (12 Date: 2007-01-05

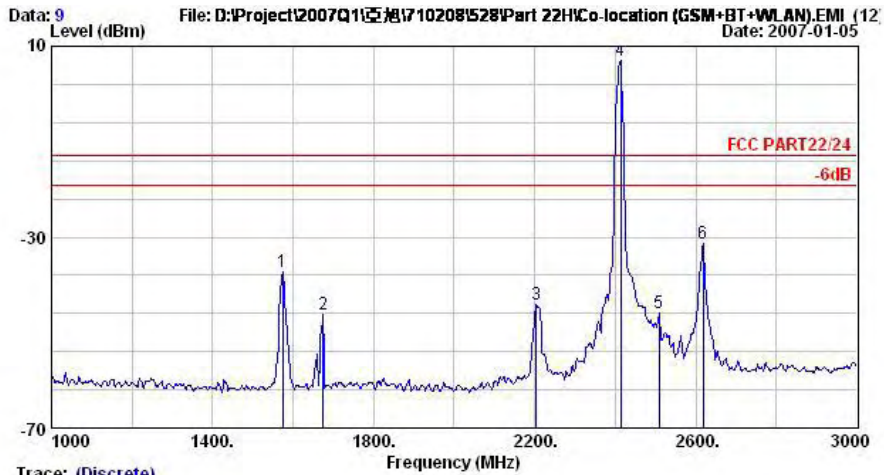


Trace: (Discrete)
 Site : 08CH06-HY
 Condition : LF-SFURIOUS VERTICAL
 EUT : PDA with GPRS/EDGE+WLAN11g+BT
 Power : 120Vac/60Hz
 Model : PG 710211
 Memo : GSM250 Link;CH189+11b Tx_CK01+Adaptor
 Memo : +BT Tx_CK00
 Plane : E2

	Freq	Level	Over	Limit	Read		
	MHz	dBm	Limit	Line	Level	Factor	Remark
			dB	dBm	dBm	dB	
1	313.3	-47.73	-34.73	-13.00	-41.56	-6.17	Peak
2	836.9	-43.07			-44.43	1.36	Peak
3	836.9	-43.07			-44.43	1.36	Peak

Remark:

- #2: MS Signal
- #3: BS Signal



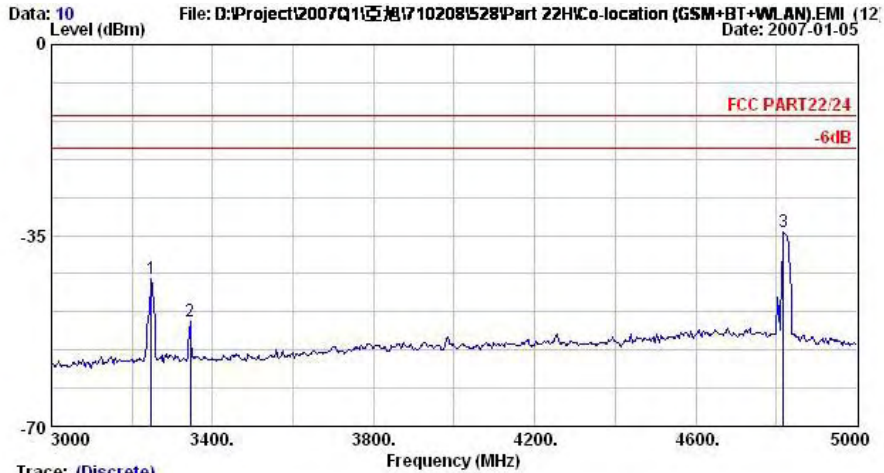
Trace: (Discrete)

Site : 08CH06-HY
 Condition : HF-SFURIOUS VERTICAL
 EUT : FDA with GPRS/EDGE+WLAN11g+BT
 Power : 120V ac/60Hz
 Model : PG 710211
 Memo : GSM250 Link;Ch189+11b Tx_Ch01+Adaptor
 Memo : +BT Tx_Ch00
 Plane : E2

	Freq	Level	Over	Limit	Read			
	MHz	dBm	Limit	Line	Level	Factor	Remark	Pol/Phase
			dB	dBm	dBm	dB		
1	1574.0	-37.35	-24.35	-13.00	-36.68	-0.67	Peak	VERTICAL
2	1674.0	-46.08	-33.08	-13.00	-45.60	-0.48	Peak	VERTICAL
3	2204.0	-44.00	-31.00	-13.00	-45.53	1.53	Peak	VERTICAL
4 @	2414.0	7.10			5.23	1.87	Peak	VERTICAL
5	2508.0	-45.95	-32.95	-13.00	-48.22	2.27	Peak	VERTICAL
6	2618.0	-31.26	-18.26	-13.00	-33.77	2.51	Peak	VERTICAL

Remark:

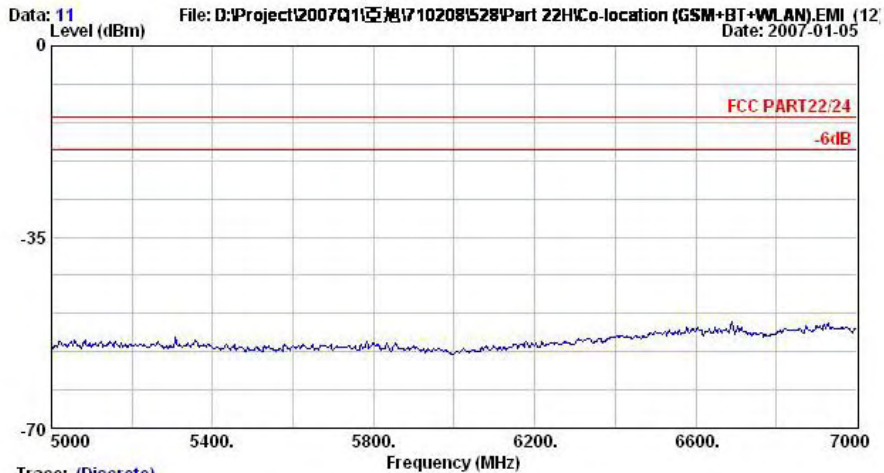
- #4: WLAN Signal



Trace: (Discrete)

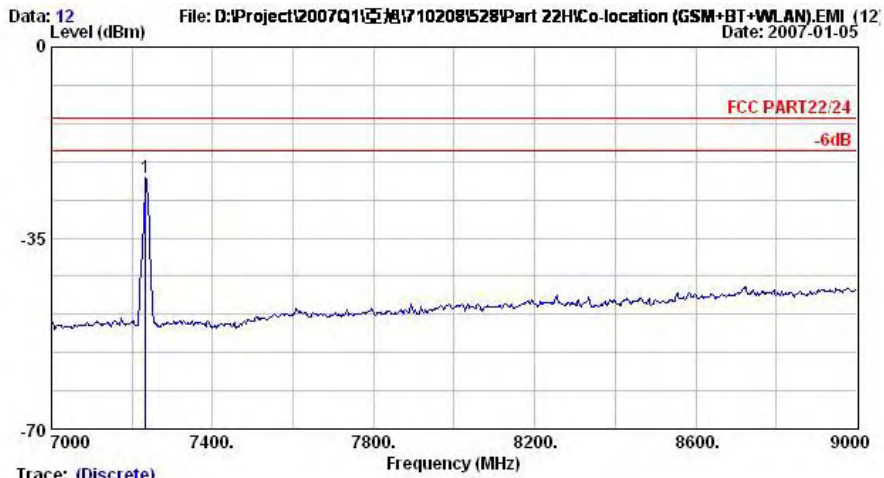
Site : 08CH06-HY
 Condition : HF-SFURIOUS VERTICAL
 EUT : PDA with GPRS/EDGE+WLAN11g+BT
 Power : 120Vac/60Hz
 Model : FG 710211
 Memo : GSM250 Link;CM189+11b Tx_Channel+Adaptor
 Memo : +BT Tx_Channel
 Plane : E2

	Freq	Level	Over	Limit	Read		
	MHz	dBm	dB	dBm	dBm	dB	Remark
1	3248.0	-42.98	-29.98	-13.00	-47.04	4.05	Peak
2	3344.0	-50.63	-37.63	-13.00	-55.10	4.47	Peak
3	4818.0	-34.47	-21.47	-13.00	-44.70	10.23	Peak



Trace: (Discrete)

Site : 08CH06-HY
 Condition : HF-SFURIOUS VERTICAL
 EUT : PDA with GPRS/EDGE+WLAN11g+BT
 Power : 120Vac/60Hz
 Model : FG 710211
 Memo : GSM250 Link;CM189+11b Tx_Channel+Adaptor
 Memo : +BT Tx_Channel
 Plane : E2



Trace: (Discrete)

Site : 08CH06-HY
 Condition : HF-SFURIOUS VERTICAL
 EUT : PDA with GPRS/EDGE+WLAN11g+BT
 Power : 120Vac/60Hz
 Model : PG 710211
 Memo : GSM250 Liner;CH189+11b Tx_CK01+Adaptor
 Memo : +BT Tx_CK00
 Plane : E2

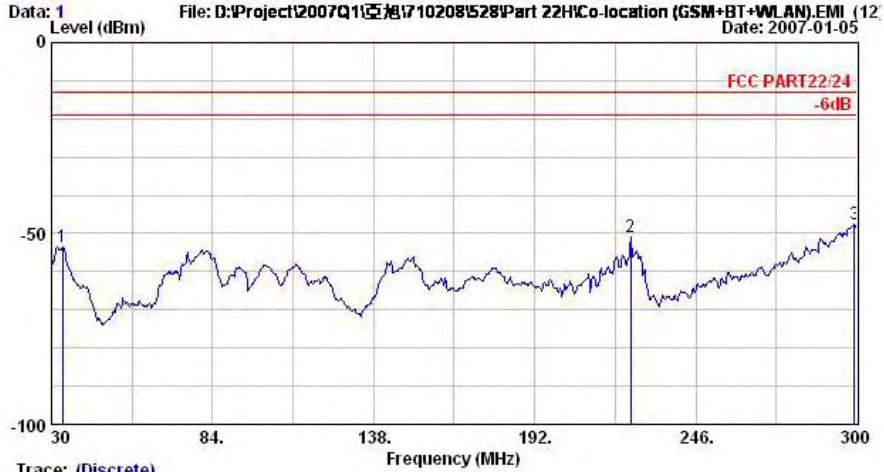
	Freq	Level	Over Limit	Limit Line	Read Level	Factor	Remark
	MHz	dBm	dB	dBm	dBm	dB	
1 @	7234.0	-24.00	-11.00	-13.00	-36.89	12.88	Peak

Remark : There is no more obvious emission except the listings above.



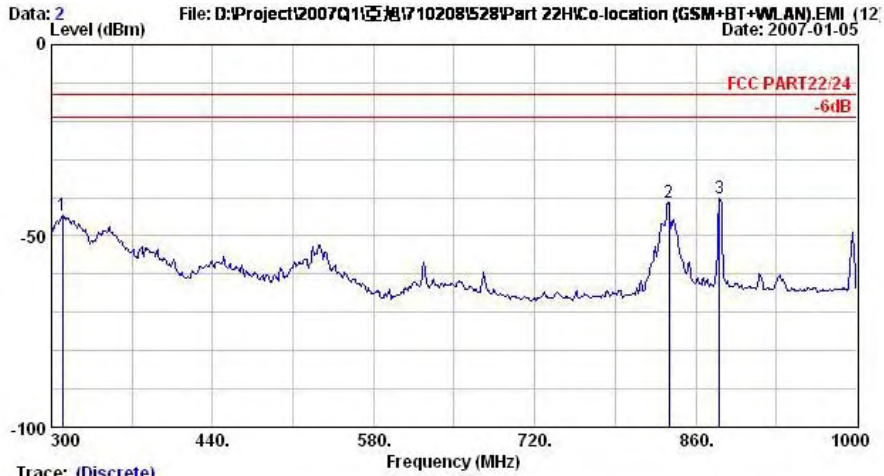
APPENDIX E. Part 22/24 RSE Data for WLAN+GSM+BT Co-location

Horizontal Polarization



Site : 08CH06-HY
 Condition : LF-SPURIOUS HORIZONTAL
 EUT : PDA with GPRS/EDGE+WLAN11g+BT
 Power : 120V ac/60Hz
 Model : FG 710211
 Memo : GSM850 Link;Ch189+11b Tx_CK01+Adaptor
 Memo : +BT Tx_CK00
 Plane : E2

	Freq	Level	Over	Limit	Read		
	MHz	dBm	dB	dBm	dBm	dB	Remark
1	33.8	-53.41	-40.41	-13.00	-51.33	-2.08	Peak
2	224.1	-50.99	-37.99	-13.00	-38.44	-12.55	Peak
3	299.2	-47.60	-34.60	-13.00	-37.65	-9.95	Peak



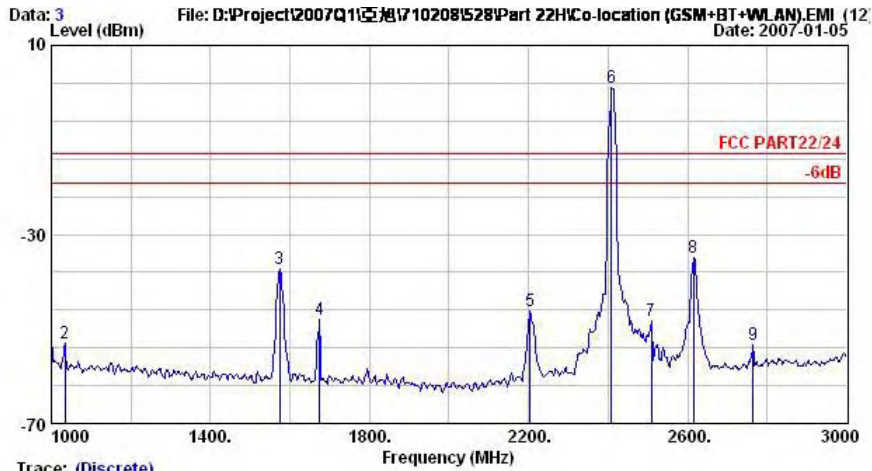
Trace: (Discrete)

Site : 08CH06-HY
 Condition : LF-SPURIOUS HORIZONTAL
 EUT : PDA with GPRS/EDGE+WLAN11g+BT
 Power : 120Vac/60Hz
 Model : FG 710211
 Memo : GSM850 Link;Ch189+11b Tx_Ck01+Adaptor
 Memo : +BT Tx_Ck00
 Plane : E2

	Freq	Level	Over	Limit	Read		
	MHz	dBm	Limit	Line	Level	Factor	Remark
			dB	dBm	dBm	dB	
1	309.8	-44.49	-31.49	-13.00	-34.87	-9.61	Peak
2	836.9	-41.21			-39.88	-1.33	Peak
3	880.3	-40.06			-39.14	-0.91	Peak

Remark:

- #2: MS Signal
- #3: BS Signal



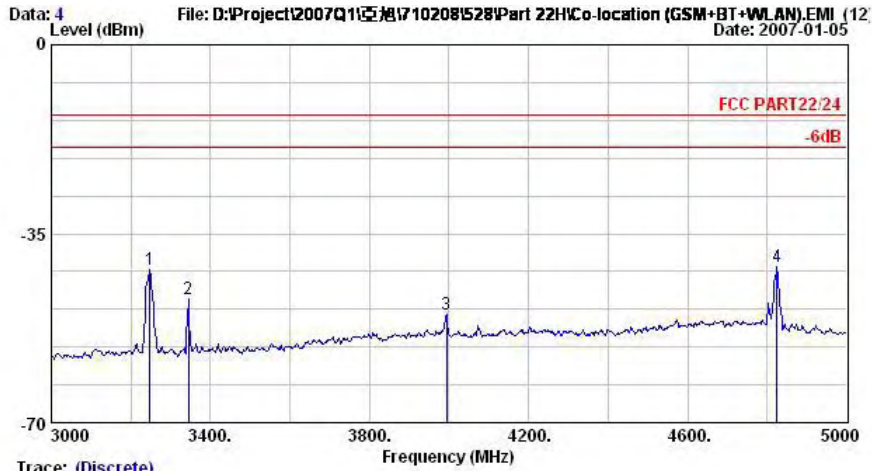
Trace: (Discrete)

Site : 08CH06-HY
 Condition : HF-SPURIOUS HORIZONTAL
 EUT : PDA with GPRS/EDGE+WLAN1g+BT
 Power : 120Vac/60Hz
 Model : PG 710211
 Memo : GSM850 Link;Ch189+11b Tx_Ch01+Adaptor
 : +BT Tx_Ch00
 Plane : E2

	Freq	Level	Over	Limit	Read			
	MHz	dBm	Limit	Line	Level	Factor	Remark	Pol/Phase
			dB	dBm	dBm	dB		
1	1000.0	-52.69	-39.69	-13.00	-54.49	1.80	Peak	HORIZONTAL
2	1034.0	-53.02	-40.02	-13.00	-54.80	1.78	Peak	HORIZONTAL
3	1574.0	-37.34	-24.34	-13.00	-37.71	0.37	Peak	HORIZONTAL
4	1674.0	-48.14	-35.14	-13.00	-48.36	0.22	Peak	HORIZONTAL
5	2204.0	-46.11	-33.11	-13.00	-46.83	0.72	Peak	HORIZONTAL
6 @	2408.0	0.93			0.04	0.89	Peak	HORIZONTAL
7	2508.0	-48.19	-35.19	-13.00	-49.39	1.20	Peak	HORIZONTAL
8	2614.0	-34.99	-21.99	-13.00	-36.83	1.84	Peak	HORIZONTAL
9	2764.0	-53.28	-40.28	-13.00	-56.32	3.04	Peak	HORIZONTAL

Remark:

- #6: WLAN Signal

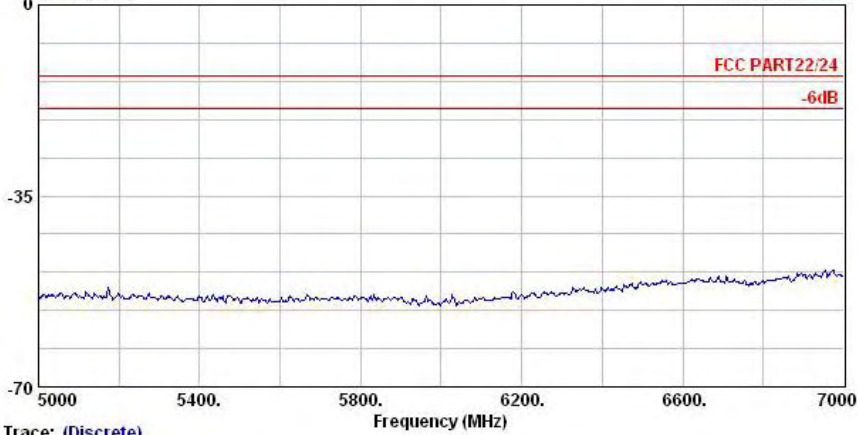


Site : 08CH06-HY
 Condition : HF-SPURIOUS HORIZONTAL
 EUT : PDA with GPRS/EDGE+WLAN11g+BT
 Power : 120Vac/60Hz
 Model : PG 710211
 Memo : GSM850 Link;Ch189+11b Tx_Ch01+Adaptor
 : +BT Tx_Ch00
 Plane : E2

Trace: (Discrete)

	Freq MHz	Level dBm	Over Limit dB	Limit Line dBm	Read Level dBm	Factor dB	Remark
1	3248.0	-41.59	-28.59	-13.00	-46.59	4.99	Peak
2	3344.0	-47.08	-34.08	-13.00	-52.49	5.41	Peak
3	3994.0	-49.86	-36.86	-13.00	-58.97	9.11	Peak
4	4824.0	-41.19	-28.19	-13.00	-52.74	11.55	Peak

Data: 5 Level (dBm) File: D:\Project\2007Q1\亞旭\710208\528\Part 22\HC-co-location (GSM+BT+WLAN).EMI (12) Date: 2007-01-05

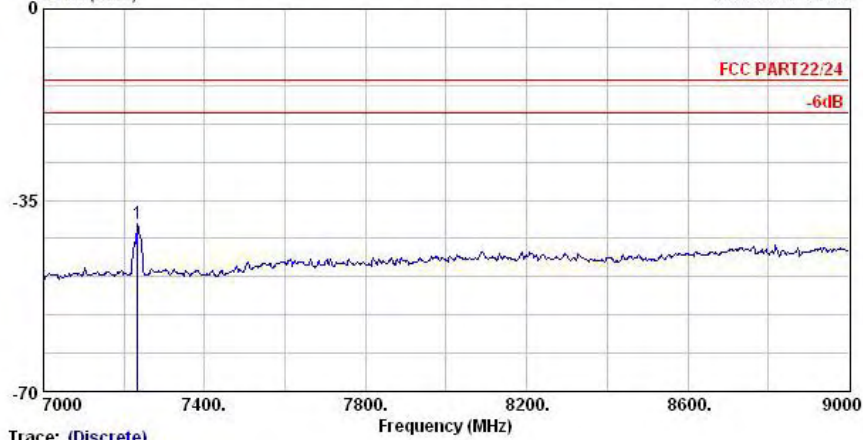


Site : 08CH06-HY
 Condition : HF-SPURIOUS HORIZONTAL
 EUT : PDA with GPRS/EDGE+WLAN11g+BT
 Power : 120Vac/60Hz
 Model : PG 710211
 Memo : GSM850 Link;Ch189+11b Tx_Ch01+Adaptor
 : +BT Tx_Ch00
 Plane : E2

Trace: (Discrete)



Data: 6 File: D:\Project\2007Q1\亞洲\710208\528\Part 22\Co-location (GSM+BT+WLAN).EMI (12 Date: 2007-01-05



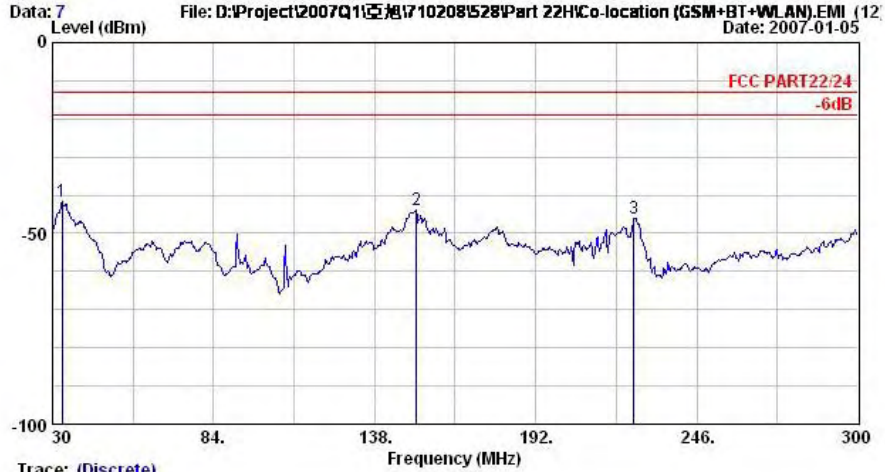
Site : 08CH06-HY
 Condition : HF-SPURIOUS HORIZONTAL
 EUT : PDA with GPRS/EDGE+WLAN11g+BT
 Power : 120V_{ac}/60Hz
 Model : PG 710211
 Memo : GSM850 Land;CH189+11b Tx_CM01+Adaptor
 Memo : +BT Tx_CM00
 Plane : E2

Trace: (Discrete)

	Freq	Level	Over	Limit	Read		
	MHz	dBm	dB	dBm	dBm	dB	Remark
1	7234.0	-39.39	-26.39	-13.00	-54.68	15.29	Peak



Vertical Polarization

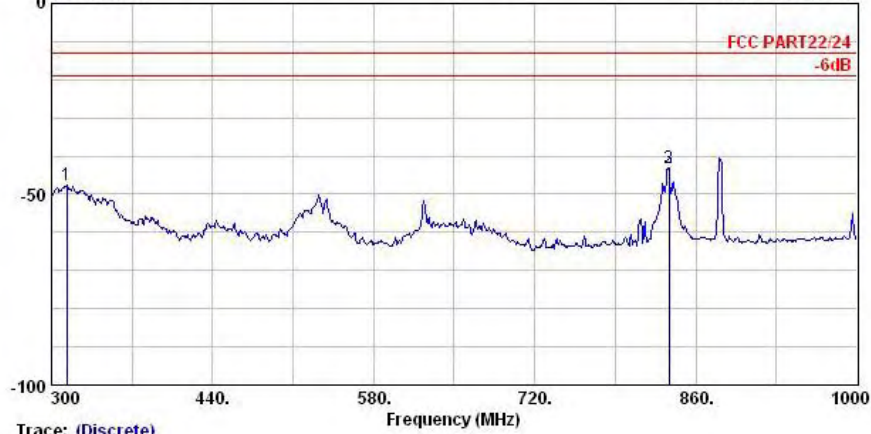


Trace: (Discrete)
 : 08CH06-HY
 : LF-SFURIOUS VERTICAL
 : PDA with GPRS/EDGE+WLAN11g+BT
 : 120Vac/60Hz
 : FG 710211
 : GSM850 Link;CM189+11b Tx_CM01+Adaptor
 : +BT Tx_CM00
 : E2

	Freq	Level	Over	Limit	Read		
	MHz	dBm	dB	dBm	dBm	dB	Remark
1	33.2	-41.66	-28.66	-13.00	-31.77	-9.89	Peak
2	152.0	-43.95	-30.95	-13.00	-35.79	-8.16	Peak
3	224.9	-46.03	-33.03	-13.00	-37.98	-8.05	Peak



Data: 8 File: D:\Project\2007Q1\区域\710208\528\Part 22\Co-location (GSM+BT+WLAN).EMI (12 Date: 2007-01-05

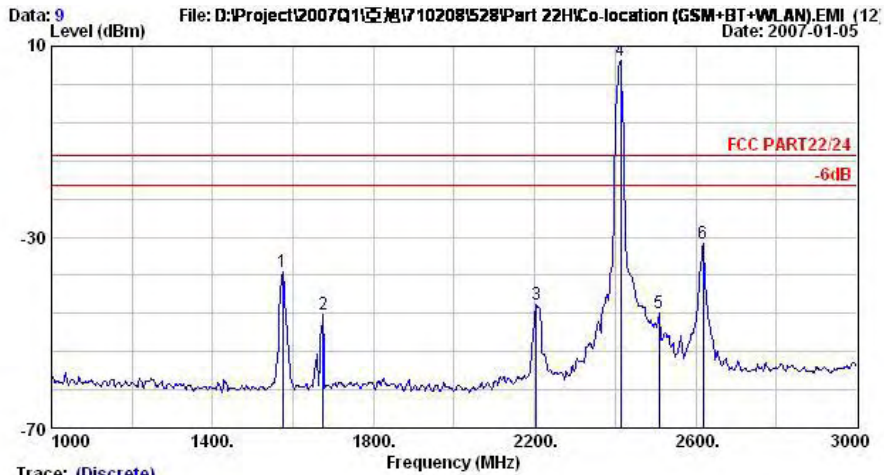


Trace: (Discrete)
 Site : 08CH06-HY
 Condition : LF-SFURIOUS VERTICAL
 EUT : PDA with GPRS/EDGE+WLAN11g+BT
 Power : 120Vac/60Hz
 Model : PG 710211
 Memo : GSM250 Link;CH189+11b Tx_CK01+Adaptor
 Memo : +BT Tx_CK00
 Plane : E2

	Freq	Level	Over	Limit	Read		
	MHz	dBm	Limit	Line	Level	Factor	Remark
			dB	dBm	dBm	dB	
1	313.3	-47.73	-34.73	-13.00	-41.56	-6.17	Peak
2	836.9	-43.07			-44.43	1.36	Peak
3	836.9	-43.07			-44.43	1.36	Peak

Remark:

- #2: MS Signal
- #3: BS Signal

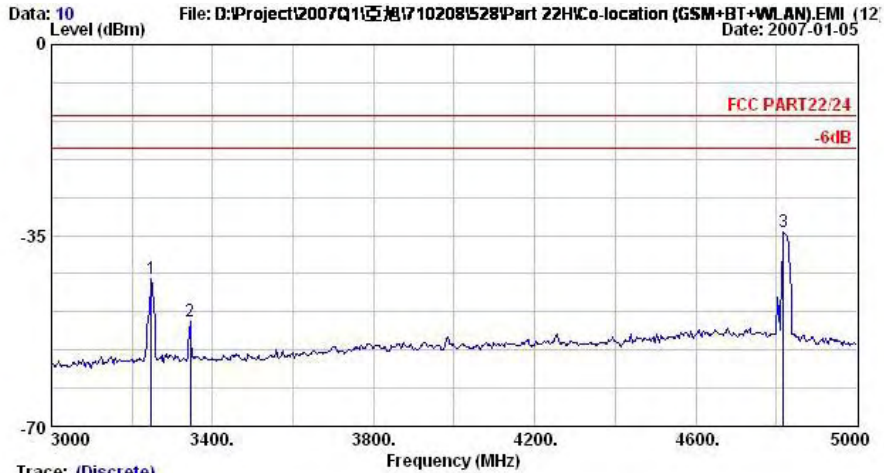


Trace: (Discrete)
 Site : 08CH06-HY
 Condition : HF-SFURIOUS VERTICAL
 EUT : FDA with GPRS/EDGE+WLAN11g+BT
 Power : 120V ac/60Hz
 Model : PG 710211
 Memo : GSM250 Link;Ch189+11b Tx_Ch01+Adaptor
 Memo : +BT Tx_Ch00
 Plane : E2

	Freq	Level	Over	Limit	Read			
	MHz	dBm	Limit	Line	Level	Factor	Remark	Pol/Phase
			dB	dBm	dBm	dB		
1	1574.0	-37.35	-24.35	-13.00	-36.68	-0.67	Peak	VERTICAL
2	1674.0	-46.08	-33.08	-13.00	-45.60	-0.48	Peak	VERTICAL
3	2204.0	-44.00	-31.00	-13.00	-45.53	1.53	Peak	VERTICAL
4 @	2414.0	7.10			5.23	1.87	Peak	VERTICAL
5	2508.0	-45.95	-32.95	-13.00	-48.22	2.27	Peak	VERTICAL
6	2618.0	-31.26	-18.26	-13.00	-33.77	2.51	Peak	VERTICAL

Remark:

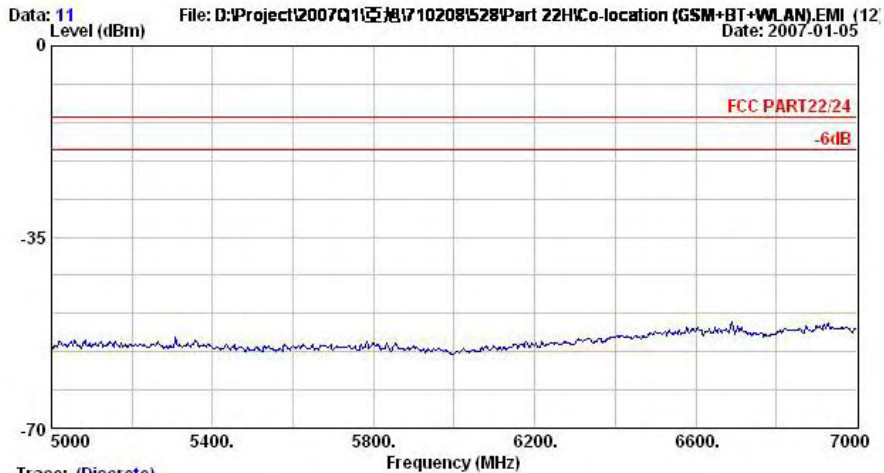
- #4: WLAN Signal



Trace: (Discrete)

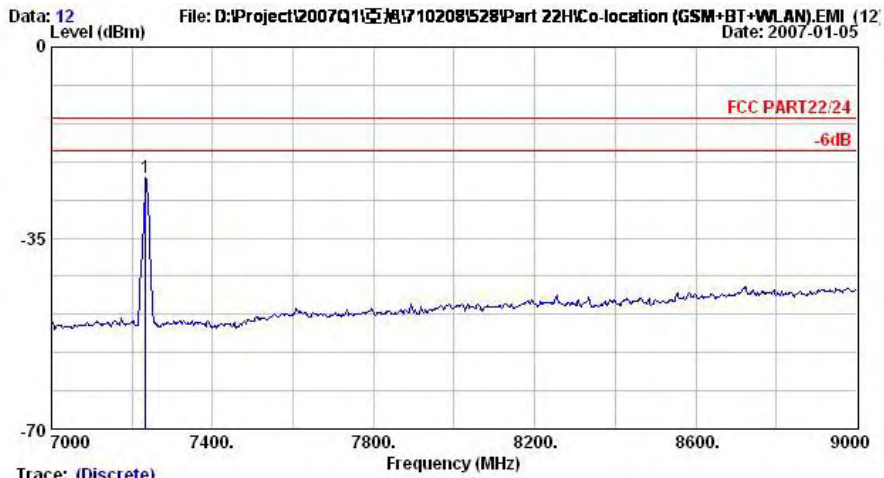
Site : 08CH06-HY
 Condition : HF-SFURIOUS VERTICAL
 EUT : PDA with GPRS/EDGE+WLAN11g+BT
 Power : 120Vac/60Hz
 Model : FG 710211
 Memo : GSM250 Link;CH189+11b Tx_Channel+Adaptor
 Memo : +BT Tx_Channel
 Plane : E2

	Freq	Level	Over	Limit	Read		
	MHz	dBm	Limit	Line	Level	Factor	Remark
			dB	dBm	dBm	dB	
1	3248.0	-42.98	-29.98	-13.00	-47.04	4.05	Peak
2	3344.0	-50.63	-37.63	-13.00	-55.10	4.47	Peak
3	4818.0	-34.47	-21.47	-13.00	-44.70	10.23	Peak



Trace: (Discrete)

Site : 08CH06-HY
 Condition : HF-SFURIOUS VERTICAL
 EUT : PDA with GPRS/EDGE+WLAN11g+BT
 Power : 120Vac/60Hz
 Model : FG 710211
 Memo : GSM250 Link;CH189+11b Tx_Channel+Adaptor
 Memo : +BT Tx_Channel
 Plane : E2



Trace: (Discrete)

Site : 08CH06-HY
 Condition : HF-SFURIOUS VERTICAL
 EUT : PDA with GPRS/EDGE+WLAN11g+BT
 Power : 120Vac/60Hz
 Model : PG 710211
 Memo : GSM250 Liner;CH189+11b Tx_CN01+Adaptor
 Memo : +BT Tx_CN00
 Plane : E2

	Freq	Level	Over Limit	Limit Line	Read Level	Factor	Remark
	MHz	dBm	dB	dBm	dBm	dB	
1 @	7234.0	-24.00	-11.00	-13.00	-36.89	12.88	Peak

Remark : There is no more obvious emission except the listings above.