

WORKABOUT PRO M/C Hand-Held Computer

User Manual

August 6, 2004 Part No. 800024.B



*ISO 9001 Certified
Quality Management System*



© Copyright 2004 by Psion Teklogix Inc., Mississauga, Ontario

This document and the information it contains is the property of Psion Teklogix Inc., is issued in strict confidence, and is not to be reproduced or copied, in whole or in part, except for the sole purpose of promoting the sale of Teklogix manufactured goods and services. Furthermore, this document is not to be used as a basis for design, manufacture, or sub-contract, or in any manner detrimental to the interests of Psion Teklogix Inc.

All trademarks are the property of their respective holders.

Return-To-Factory Warranty

Psion Teklogix warrants a return-to-factory warranty for a period of one year. In some regions, the warranty exceeds this period. Please contact your local Psion Teklogix office for details. For a list of offices, see *Appendix A: Support Services And Worldwide Offices*. The warranty on Psion Teklogix manufactured equipment does not extend to any product that has been tampered with, altered, or repaired by any person other than an employee of an authorized Psion Teklogix service organization. See Psion Teklogix terms and conditions of sale for full details.

Service

When requesting service, please provide information concerning the nature of the failure and the manner in which the equipment was used when the failure occurred. Type, model, and serial number should also be provided. Before returning any products to Psion Teklogix, please call the Customer Services Group for a Return Authorization number.

Support Services

Psion Teklogix provides a complete range of product support services to its customers. For detailed information, please refer to *Appendix A: Support Services And Worldwide Offices*. This section also provides information about accessing support services through the Psion Teklogix web site.

Disclaimer

Every effort has been made to make this material complete, accurate, and up-to-date. Psion Teklogix Inc. reserves the right to make changes without notice and shall not be responsible for any damages, including but not limited to consequential damages, caused by reliance on the material presented, including but not limited to typographical errors.

TABLE OF CONTENTS

Program License Agreements	I
Approvals And Safety Summary	IX
Chapter 1: Introduction	
1.1 About This Manual	3
1.2 Text Conventions	4
1.3 About The WORKABOUT PRO Hand-Held Computer	4
1.3.1 Features.	4
1.3.2 The WORKABOUT PRO Hand-Held Computer	9
1.3.3 Regulatory Labels	10
Chapter 2: Basic Checkout	
2.1 Preparing The WORKABOUT PRO For Operation	15
2.1.1 The Main Battery.	15
2.1.2 Charging The Battery	15
2.1.3 The Internal Battery	15
2.2 Turning The WORKABOUT PRO On and Off.	15
2.2.1 Installing The Battery And Switching The Unit On	15
2.2.2 Switching The Unit Off (Suspend).	16
2.3 Connecting The WORKABOUT PRO To A PC	16
2.3.1 Using Microsoft® ActiveSync® To Work With Files.	16
2.4 Calibrating The Touchscreen	17
2.5 Resetting The WORKABOUT PRO Hand-Held	17
Chapter 3: Getting To Know The WORKABOUT PRO	
3.1 Features Of The WORKABOUT PRO	21
3.2 The Batteries	22
3.2.1 Battery Safety	23

Contents

3.2.2	Removing And Installing The Battery Pack	23
3.2.3	Charging The Battery	24
3.3	Switching The Hand-Held On And Off	25
3.4	The Keyboard	26
3.4.1	Modifier Keys.	27
3.4.1.1	Activating Modifier Keys.	27
3.4.1.2	Locking Modifier Keys.	27
3.4.2	The Keys	27
3.4.3	The Keypad Backlight	29
3.5	The Display	29
3.5.1	Colour Display	29
3.5.2	Monochrome Display.	30
3.5.3	Calibrating The Touchscreen	30
3.6	Indicators.	31
3.6.1	The LED	31
3.6.2	Onscreen Indicators.	32
3.6.3	Audio Indicators	34
3.6.3.1	Adjusting The Speaker Volume	35
3.7	Monitoring The Battery And Maximizing Run Time	35
3.7.1	Storing Batteries	36
3.8	Uploading Data In A Docking Station.	36
3.9	Bluetooth Radio	37
3.10	The SD/MMC Card – Adding Memory	37
3.10.1	Inserting The Card	37
3.11	General Maintenance	39
3.11.1	Caring For The Touchscreen	39
3.11.2	Cleaning The WORKABOUT PRO	39

Chapter 4: Working With Windows CE .NET

4.1	Navigating In Windows CE .NET And Applications	43
4.1.1	Navigating Using A Touchscreen And Stylus	43
4.1.2	Navigating Using The Keyboard	43
4.2	Working With Files, Folders And Programs	44
4.3	The Startup Desktop	44
4.3.1	The Desktop Icons	45
4.3.2	The Taskbar.	46

Contents

4.3.2.1	Using The Taskbar46
4.3.2.2	Customizing The Taskbar46
4.4	The Start Menu47
4.4.1	The Desktop48
4.4.2	Security Settings48
4.4.3	The System Tray49
4.4.4	The Task Manager50
4.4.5	Cycle Tasks.50
4.4.6	Power Info50
4.4.7	Programs51
4.4.8	Settings52
4.4.9	Run53
4.4.10	Shutdown.54
4.5	Using A Dialogue Box55

Chapter 5: Configuration

5.1	Remote Desktop Connection59
5.2	Pocket PC Compatibility59
5.3	The Control Panel59
5.4	Control Panel Icons60
5.5	Basic Setup64
5.5.1	Display Properties64
5.5.1.1	Display Contrast64
5.5.1.2	Display Backlight65
5.5.1.3	Display Appearance66
5.5.2	Keyboard Properties67
5.5.2.1	Key Repeat.67
5.5.2.2	Keyboard Backlight68
5.5.2.3	Keyboard One Shot Modes69
5.5.2.4	Keyboard Macro Keys70
5.5.2.5	Unicode Mapping71
5.5.3	Volume And Sound Properties.73
5.5.3.1	Volume Adjustments73
5.5.4	Power Management Properties.74
5.5.4.1	Battery Capacity74
5.5.4.2	Power Saving Schemes75
5.5.5	Stylus Properties76
5.5.5.1	Setting Double-Tap Sensitivity76

Contents

5.5.5.2	Touchscreen Calibration	77
5.5.5.3	Touchscreen Options	77
5.5.6	Certificate Assignment	77
5.6	Bluetooth Setup	78
5.6.1	The Devices Tab	79
5.6.2	The Server Tab	82
5.6.3	The Property Tab	83
5.6.4	The Bluetooth GPRS Phone	84
5.7	SNMP (Simple Network Management Protocol) Setup.	90
5.7.1	Contact Tab	91
5.7.2	Communities Tab	92
5.7.2.1	Adding A Community	93
5.7.2.2	Modifying A Community Setting	94
5.7.2.3	Removing An Existing Community	94
5.7.3	Trap Destination Tab	95
5.7.3.1	Enabling Authentication TRAPS.	95
5.7.3.2	Adding A Destination	95
5.7.3.3	Changing A Destination	96
5.7.3.4	Removing A Trap Destination	96
5.7.4	Permitted Hosts Tab	97
5.7.4.1	Adding A Host	97
5.7.4.2	Changing A Host	98
5.8	Total Recall	98
5.8.1	Creating A Backup Profile	99
5.8.2	Restoring A Profile	102
5.9	APN Manager Settings	102
5.9.1	Automatic GSM Setup – Connecting To The Network	102
5.9.2	Manual GSM Setup – APN Settings Manager	103
5.9.3	PIN Settings.	105

Chapter 6: Connecting To A LAN With 802.11b

6.1	Installing The 802.11b Radio	109
6.2	Connecting To A LAN Using An 802.11b Radio	111
6.2.1	Configuring An IEEE 802.11b Radio	111
6.2.2	Assigning An IP Address	117
6.2.3	Name Servers Tab	118
6.2.4	Advanced Features	118

- 6.2.4.1 Rearranging Preferred Networks 119
- 6.2.4.2 Deleting A Preferred Network 119
- 6.2.4.3 Changing Network Properties 119

Chapter 7: Expansion Modules

- 7.1 Expansion Modules 123
 - 7.1.1 Removing The End-Cap And Back Plate 123
 - 7.1.2 What’s Inside. 124
 - 7.1.3 Shutting Off Power. 125
 - 7.1.4 Installing The PCMCIA Module. 125
 - 7.1.5 Installing A GSM/GPRS Module 127
 - 7.1.6 Installing An SE 1223HP Scanner 128

Chapter 8: Peripheral Devices & Accessories

- 8.1 Carrying Accessories 133
 - 8.1.1 Attaching The Hand Strap 133
 - 8.1.2 Attaching The Pistol Grip 135
 - 8.1.3 Protective Carrying Case. 136
 - 8.1.3.1 Using The Swivel Belt Loop With The Carrying Case 137
 - 8.1.4 Soft Shell Holster. 139
- 8.2 The Batteries 140
 - 8.2.1 Lithium Ion Battery Safety Precautions 140
- 8.3 Chargers And Docking Stations. 141
 - 8.3.1 Installation – Chargers And Docking Stations 142
 - 8.3.2 Power Consumption Considerations 142
 - 8.3.3 Operator Controls 142
 - 8.3.4 Important Charger Safety Instructions 142
- 8.4 Desktop Docking Station – Model #WA4002 144
 - 8.4.1 Charging A Battery Installed In The WORKABOUT PRO . . . 145
 - 8.4.2 Charging A Spare Battery 145
 - 8.4.3 Battery Charge Duration 145
 - 8.4.4 Charger LED Indicators 145
 - 8.4.5 Troubleshooting The Charging Operation Of The Dock 146
 - 8.4.6 Desktop Docking Station Ports 146
 - 8.4.7 Linking A WORKABOUT PRO To A PC 146
 - 8.4.7.1 Using Microsoft® ActiveSync® To Work With Files . 147

Contents

8.4.8	Linking A WORKABOUT PRO To An Ethernet Network . . .	147
8.4.8.1	Network Access	148
8.4.9	Troubleshooting The Docking Station Operations	148
8.5	Single Battery Charger – Model #WA3001	148
8.5.1	Inserting A Battery In The Single Battery Charger.	149
8.5.2	Battery Charge Duration	149
8.5.3	Charge Indicators – The LED.	149
8.6	Quad Battery Charger – Model #WA3004.	150
8.6.1	Charging Batteries	150
8.6.2	Battery Charge Duration	150
8.6.3	Charge Indicators – The LEDs	150
8.6.4	Troubleshooting.	151
8.6.4.1	Excessive Charge Duration.	151
8.6.4.2	Indicator Flashing Red	151
8.6.4.3	Power LED Does Not Light Up	151
8.6.4.4	Indicator Does Not Light When Battery Installed . . .	152
8.7	Quad Docking Station – Model #WA4004	152
8.7.1	Quad Docking Station Setup	153
8.7.2	Quad Indicators	153
8.7.3	Inserting A WORKABOUT In The Quad Docking Station . .	153
8.7.4	Network Access.	153
8.7.4.1	Network Addressing	154
8.7.5	Battery Charging – LED Behaviour	154
8.7.6	Troubleshooting.	154
8.7.6.1	Network Link Unsuccessful	154
8.7.6.2	Hand-Held LED Does Not Light When Docked. . .	154
8.8	AC Wall Adaptor And Tether Cable	155
8.9	Automotive Adaptor	156
8.10	The Vehicle Cradle.	157
8.10.1	Vehicle Cradle Mounting Recommendations	157
8.10.1.1	Mounting Template.	158
8.10.2	Wiring Guidelines	158
8.10.3	Using The Vehicle Cradle	158
8.10.4	Maintaining The Vehicle Cradle	159
8.10.5	Powered Cradle Installation In High Voltage Vehicles	159
8.10.6	Powered Vehicle Cradle Installation	160
8.10.6.1	Wiring Vehicle Power To The Cradle	160

Contents

8.10.7 The Port Replicator	161
8.11 Bluetooth Peripherals	162

Chapter 9: Specifications

9.1 Hand-Held Computer Specifications	165
9.2 Radio Specifications.	167
9.3 SE 1223HP Scanner Specifications	167
9.4 Battery Specifications	168
9.4.1 Standard Battery Pack	168
9.4.2 High-Capacity Battery Pack	169
9.4.3 Maxell ML2032 Rechargeable Coin Battery	171

Appendix A: Support Services And Worldwide Offices

A.1 Technical Support	A-1
A.2 Product Repairs	A-1
A.3 Worldwide Offices.	A-2

Appendix B: Port Pinouts

B.1 Standard Battery Contact Pin Definition	B-1
B.2 High-Capacity Battery Contact Pin Definition	B-1
B.3 LIF (Low Insertion Force) Port Pinout	B-2
B.4 Tether Port Pinout	B-2
B.5 Audio Mini-Plug	B-3

Appendix C: USB Setup Application

C.1 USB Setup.	C-1
C.1.1 Launching The Application	C-1
C.1.2 Pre-Installation: Updating usbstor.inf And wceusbsh.inf	C-2
C.1.3 Installation: WORKABOUT PRO As A Device On Your PC	C-4
C.1.4 Post Installation	C-5

PROGRAM LICENSE AGREEMENTS

Microsoft's End User License Agreement

You have acquired a device (“DEVICE”) that includes software licensed by Psion Teklogix Inc. from Microsoft Licensing Inc. or its affiliates (“MS”). Those installed software products of MS origin, as well as associated media, printed materials, and “online” or electronic documentation (“SOFTWARE”) are protected by international intellectual property laws and treaties. The SOFTWARE is licensed, not sold. All rights reserved.

IF YOU DO NOT AGREE TO THIS END USER LICENSE AGREEMENT (“EULA”), DO NOT USE THE DEVICE OR COPY THE SOFTWARE. INSTEAD, PROMPTLY CONTACT PSION TEKLOGIX INC. FOR INSTRUCTIONS ON RETURN OF THE UNUSED DEVICE(S) FOR A REFUND. ANY USE OF THE SOFTWARE, INCLUDING BUT NOT LIMITED TO USE ON THE DEVICE, WILL CONSTITUTE YOUR AGREEMENT TO THIS EULA (OR RATIFICATION OF ANY PREVIOUS CONSENT).

GRANT OF SOFTWARE LICENSE. This EULA grants you the following license:

- You may use the SOFTWARE only on the DEVICE.
- **NOT FAULT TOLERANT.** THE SOFTWARE IS NOT FAULT TOLERANT. PSION TEKLOGIX INC. HAS INDEPENDENTLY DETERMINED HOW TO USE THE SOFTWARE IN THE DEVICE, AND MS HAS RELIED UPON PSION TEKLOGIX INC. TO CONDUCT SUFFICIENT TESTING TO DETERMINE THAT THE SOFTWARE IS SUITABLE FOR SUCH USE.
- **NO WARRANTIES FOR THE SOFTWARE. THE SOFTWARE is provided “AS IS” and with all faults. THE ENTIRE RISK AS TO SATISFACTORY QUALITY, PERFORMANCE, ACCURACY, AND EFFORT (INCLUDING LACK OF NEGLIGENCE) IS WITH YOU. ALSO, THERE IS NO WARRANTY AGAINST INTERFERENCE WITH YOUR ENJOYMENT OF THE SOFTWARE OR AGAINST**

INFRINGEMENT. IF YOU HAVE RECEIVED ANY WARRANTIES REGARDING THE DEVICE OR THE SOFTWARE, THOSE WARRANTIES DO NOT ORIGINATE FROM, AND ARE NOT BINDING ON, MS.

- **Note on Java Support.** The SOFTWARE may contain support for programs written in Java. Java technology is not fault tolerant and is not designed, manufactured, or intended for use or resale as online control equipment in hazardous environments requiring fail-safe performance, such as in the operation of nuclear facilities, aircraft navigation or communication systems, air traffic control, direct life support machines, or weapons systems, in which the failure of Java technology could lead directly to death, personal injury, or severe physical or environmental damage. Sun Microsystems, Inc. has contractually obligated MS to make this disclaimer.
- **No Liability for Certain Damages. EXCEPT AS PROHIBITED BY LAW, MS SHALL HAVE NO LIABILITY FOR ANY INDIRECT, SPECIAL, CONSEQUENTIAL OR INCIDENTAL DAMAGES ARISING FROM OR IN CONNECTION WITH THE USE OR PERFORMANCE OF THE SOFTWARE. THIS LIMITATION SHALL APPLY EVEN IF ANY REMEDY FAILS OF ITS ESSENTIAL PURPOSE. IN NO EVENT SHALL MS BE LIABLE FOR ANY AMOUNT IN EXCESS OF U.S. TWO HUNDRED FIFTY DOLLARS (U.S.\$250.00).**
- **Limitations on Reverse Engineering, Decompilation, and Disassembly.** You may not reverse engineer, decompile, or disassemble the SOFTWARE, except and only to the extent that such activity is expressly permitted by applicable law notwithstanding this limitation.
- **SOFTWARE TRANSFER ALLOWED BUT WITH RESTRICTIONS.** You may permanently transfer rights under this EULA only as part of a permanent sale or transfer of the Device, and only if the recipient agrees to this EULA. If the SOFTWARE is an upgrade, any transfer must also include all prior versions of the SOFTWARE.
- **EXPORT RESTRICTIONS.** You acknowledge that SOFTWARE is subject to U.S. export jurisdiction. You agree to comply with all applicable international and national laws that apply to the SOFTWARE, including the U.S. Export Administration Regulations, as well as end-user, end-use and destination restrictions issued by U.S. and other governments. For additional information see <http://www.microsoft.com/exporting/>.

Meetinghouse Data Communications, Inc. End User License Agreement

End User License Agreement:

ATTENTION: PLEASE READ THIS SOFTWARE LICENSE AGREEMENT ("LICENSE") CAREFULLY BEFORE INSTALLATION. USE OF THE SOFTWARE IS SUBJECT TO THE SOFTWARE LICENSE TERMS SET FORTH BELOW. USING THE SOFTWARE INDICATES YOUR ACCEPTANCE OF THESE LICENSE TERMS. IF YOU DO NOT ACCEPT THESE LICENSE TERMS, YOU MUST RETURN THE SOFTWARE FOR A FULL REFUND. IF THE SOFTWARE IS SUPPLIED WITH ANOTHER PRODUCT, YOU MAY RETURN THE ENTIRE UNUSED PRODUCT FOR A FULL REFUND.

Software License Terms:

The following terms govern your use of the enclosed Software unless you have a separate written agreement with Meetinghouse Data Communications, Inc. herein also known as "MDC".

License Grant:

MDC grants you a non-exclusive and non-transferable license to Use one copy of the Software. "Use" means storing, loading, installing, executing or displaying the Software. "Software" means software, documentation and any fonts accompanying this License whether on disk, in read only memory, on any other media or in any other form. You may not modify the Software or disable any licensing or control features of the Software. If the Software is licensed for "concurrent use", you may not allow more than the maximum number of authorized users to Use the Software concurrently.

The Software is licensed as a "Shareware" version, on one computer only. You may use the Software distributed and licensed as Shareware on a trial basis only. The shareware version of the Software may be distributed freely without any associated fees to other parties who wish to try the software as long as the Software is distributed within an exact copy of the original MDC self-extracting installation file. In other words, nothing may be left out of the Shareware as distributed on MDC's web site at <http://www.mtghouse.com>.

License Agreement

All permanent licenses are prepaid and the Software is licensed to you by MDC. You own the media on which the Software is recorded but MDC and/or MDC's licensor(s) retain title to the Software. The Software and any copies which this License authorizes you to make are subject to this License.

Permitted Uses and Restrictions:

This License allows you to install and use the Software on a single computer at a time. This License does not allow the Software to exist on more than one computer at a time. You may make one copy of the Software in machine-readable form for backup purposes only. The backup copy must include all copyright information contained on the original. Except as expressly permitted in this License, you may not, in whole or part, decompile, reverse engineer, disassemble, modify, rent, lease, loan, sublicense, distribute or create derivative works based upon the Software, or transmit the Software over a network. You may not copy the Software onto any bulletin board or similar system. You agree that you will not utilize any information obtained from MDC or obtained or learned in the course of using the Software, to develop or improve technology with similar functionality to the Software, nor will you directly or indirectly assist any other party in doing so. You further agree that you will not separate the various modules of the software for their different purposes, if any.

High Risk Activities:

The Software is not fault-tolerant and is not designed, manufactured or intended for use or resale as on-line control equipment in hazardous environments requiring fail-safe performance, such as in the operation of nuclear facilities, aircraft navigation or communication systems, air traffic control, direct life support machines, or weapons systems, in which the failure of the Software could lead directly to death, personal injury, or severe physical or environmental damage ("High Risk Activities"). Accordingly, MDC and its suppliers specifically disclaim any express or implied warranty of fitness for High Risk Activities. You agree that MDC and its suppliers will not be liable for any claims or damages arising from the use of the Software in such applications.

Ownership:

The Software is licensed, not sold. The Software is owned and copyrighted by MDC or its third party suppliers. Your license confers no title or ownership in the Software and is not a sale of any rights in the Software. You acknowledge such ownership and intellectual property rights and will not take any action to jeopardize, limit or interfere in any manner with MDC's or its suppliers' ownership of or rights with respect

License Agreement

to the Software. The Software is protected by copyright and other intellectual property laws and by international treaties. MDC's third party suppliers may protect their rights in the event of any violation of these License Terms.

Termination:

Your rights under this License will terminate automatically without notice from MDC if you fail to comply with any term(s) of this License. Upon termination, you must immediately destroy the Software, together with all copies, adaptations and merged portions in any form.

U.S. Government Restricted Rights:

The Software and documentation have been developed entirely at private expense and are provided as "Commercial Computer Software" or "restricted computer software". They are delivered and licensed as "commercial computer software" as defined in DFARS 252.227-7013 (Oct 1988), DFARS 252.211-7015 (May 1991) or DFARS 252.227-7014 (Jun 1995), as a "commercial item" as defined in FAR 2.101 (a), or as "Restricted computer software" as defined in FAR 52.227-19 (Jun 1987) (or any equivalent agency regulation or contract clause), whichever is applicable. You have only those rights provided for such Software and Documentation by the applicable FAR or DFARS clause or the MDC standard software agreement for the product.

Export Law Assurances:

You may not use or otherwise export or reexport the Software except as authorized by United States law and the laws of the jurisdiction in which the Software was obtained. In particular, but without limitation, the Software may not be exported or reexported (i) into (or to a national or resident of) any U.S. embargoed country or (ii) to anyone on the U.S. Treasury Department's list of Specially Designated Nationals or the U.S. Department of Commerce's Table of Denial Orders. By using the Software, you represent and warrant that you are not located in, under control of, or a national or resident of any such country or on any such list.

Limited Warranty on Media: (if applicable)

MDC warrants the media on which the Software is recorded to be free from defects in materials and workmanship under normal use for a period of ninety (90) days from the date of original retail purchase. Your exclusive remedy under this paragraph shall be, at MDC's option, a refund of the purchase price of the product containing the Software or replacement of the Software which is returned to MDC or a

License Agreement

MDC authorized representative with a copy of the receipt. THIS LIMITED WARRANTY AND ANY IMPLIED WARRANTIES ON THE MEDIA INCLUDING THE IMPLIED WARRANTIES OF MERCHANTABILITY AND FITNESS FOR A PARTICULAR PURPOSE ARE LIMITED IN DURATION TO NINETY (90) DAYS FROM THE DATE OF ORIGINAL RETAIL PURCHASE. SOME JURISDICTIONS DO NOT ALLOW LIMITATIONS ON HOW LONG AN IMPLIED WARRANTY LASTS, SO THIS LIMITATION MAY NOT APPLY TO YOU. THE LIMITED WARRANTY SET FORTH HEREIN IS EXCLUSIVE AND IN LIEU OF ALL OTHERS, WHETHER ORAL OR WRITTEN, EXPRESS OR IMPLIED. LICENSOR SPECIFICALLY DISCLAIMS ALL OTHER WARRANTIES. THIS LIMITED WARRANTY GIVES YOU SPECIFIC LEGAL RIGHTS, AND YOU MAY ALSO HAVE OTHER RIGHTS WHICH VARY BY JURISDICTION.

Disclaimer of Warranty on Software:

You expressly acknowledge and agree that use of the Software is at your sole risk. The Software is provided "AS IS" and without warranty of any kind and MDC and MDC's licensor(s) (for the purposes of warranty and liability, MDC and MDC's licensor(s) shall be collectively referred to as "MDC") EXPRESSLY DISCLAIM ALL WARRANTIES AND/OR CONDITIONS, EXPRESS OR IMPLIED, INCLUDING, BUT NOT LIMITED TO, THE IMPLIED WARRANTIES AND/OR CONDITIONS OF MERCHANTABILITY OR SATISFACTORY QUALITY AND FITNESS FOR A PARTICULAR PURPOSE AND NON-INFRINGEMENT OF THIRD PARTY RIGHTS. LICENSOR DOES NOT WARRANT THAT THE FUNCTIONS CONTAINED IN THE SOFTWARE WILL MEET YOUR REQUIREMENTS, OR THAT THE OPERATION OF THE SOFTWARE WILL BE UNINTERRUPTED OR ERROR-FREE, OR THAT DEFECTS IN THE SOFTWARE WILL BE CORRECTED. FURTHERMORE, LICENSOR DOES NOT WARRANT OR MAKE ANY REPRESENTATIONS REGARDING THE USE OR THE RESULTS OF THE USE OF THE SOFTWARE OR RELATED DOCUMENTATION IN TERMS OF THEIR CORRECTNESS, ACCURACY, RELIABILITY, OR OTHERWISE. NO ORAL OR WRITTEN INFORMATION OR ADVICE GIVEN BY LICENSOR OR AN LICENSOR AUTHORIZED REPRESENTATIVE SHALL CREATE A WARRANTY OR IN ANY WAY INCREASE THE SCOPE OF THIS WARRANTY. SHOULD THE SOFTWARE PROVE DEFECTIVE, YOU (AND NOT LICENSOR OR AN LICENSOR AUTHORIZED REPRESENTATIVE) ASSUME THE ENTIRE COST OF ALL NECESSARY SERVICING, REPAIR OR CORRECTION. SOME JURISDICTIONS DO NOT ALLOW THE EXCLUSION OF IMPLIED WAR-

License Agreement

RANTIES, SO THE ABOVE EXCLUSION MAY NOT APPLY TO YOU. THE TERMS OF THIS DISCLAIMER DO NOT AFFECT OR PREJUDICE THE STATUTORY RIGHTS OF A CONSUMER ACQUIRING LICENSOR PRODUCTS OTHERWISE THAN IN THE COURSE OF A BUSINESS, NEITHER DO THEY LIMIT OR EXCLUDE ANY LIABILITY FOR DEATH OR PERSONAL INJURY CAUSED BY LICENSOR'S NEGLIGENCE.

Limitation of Liability:

UNDER NO CIRCUMSTANCES, EXCEPT TO THE EXTENT PROHIBITED BY LOCAL LAW, INCLUDING NEGLIGENCE, SHALL LICENSOR, ITS SUBSIDIARIES, AFFILIATES, OR SUPPLIERS BE LIABLE FOR ANY DIRECT, INCIDENTAL, SPECIAL, INDIRECT OR CONSEQUENTIAL DAMAGES (INCLUDING LOST PROFIT, LOST DATA, OR DOWNTIME COSTS) ARISING OUT OF OR RELATING TO THIS LICENSE, THE USE, INABILITY TO USE, OR THE RESULTS OF USE OF THE SOFTWARE, WHETHER BASED IN WARRANTY, CONTRACT, TORT OR OTHER LEGAL THEORY, AND WHETHER OR NOT ADVISED OF THE POSSIBILITY OF SUCH DAMAGES. In no event shall MDC's total liability to you for all damages exceed the price paid for the license to use the Software, regardless of the form of the claim.

Government End Users:

If the Software is supplied to the United States Government, the Software is classified as "restricted computer software" as defined in clause 52.227-19 of the FAR. The United States Government's rights to the Software are as provided in clause 52.227-19 of the FAR.

Controlling Law and Severability:

This License shall be governed by the laws of the United States and the State of New Hampshire. As to any dispute relating to this License or the Software, you further agree to jurisdiction and venue in the Federal and State Courts located in the State of New Hampshire. If for any reason a court of competent jurisdiction finds any provision, or portion thereof, to be unenforceable, the remainder of this License shall continue in full force and effect.

Acknowledgement:

Your use of any software produced by MDC is based only on your acknowledgement that you have read this License, understand it, and agree to be bound by its terms and conditions.

License Agreement

MDC Acknowledgments:

This product includes software developed by MDC and its licensors. This product includes software developed by the OpenSSL Project for use in the OpenSSL Toolkit (<http://www.openssl.org/>). This product includes cryptographic software written by Eric Young (eay@cryptsoft.com). This product includes software written by Tim Hudson (tjh@cryptsoft.com).

Complete Agreement:

This License constitutes the entire agreement between the parties with respect to the use of the Software and supersedes all prior or contemporaneous understandings regarding such subject matter. No amendment to or modification of this License will be binding unless in writing and signed by MDC.

NOTE: EXCEPT TO THE EXTENT ALLOWED BY LOCAL LAW, THESE WARRANTY TERMS DO NOT EXCLUDE, RESTRICT, OR MODIFY, AND ARE IN ADDITION TO, THE MANDATORY STATUTORY RIGHTS APPLICABLE TO THE LICENSE OF THE SOFTWARE TO YOU.

Meetinghouse Data Communications, Inc.

150 Greenleaf Avenue, Unit F

Portsmouth, NH 03801

Revised 8/12/2002

APPROVALS AND SAFETY SUMMARY

Declaration Of Conformity

Product: **7525 WORKABOUT PRO**

Application of Council Directive(s): EMC Directive: 89/336/EEC
Low Voltage Directive: 73/23/EEC

Conformity Declared to Standards: EN 55022: 1998 Class B;
EN 61000-3-2; EN 61000-3-3
EN 55024:1998;
EN 61000-4-2; ± 4 kV CD; ± 8 kV AD
EN 61000-4-3; 3V/m, 80-1000 MHz
EN 61000-4-4; ± 1 kV Power lines
EN 61000-4-5; ± 1 kV Differential mode
EN 61000-4-6; 3VRMS, 150kHz-80MHz
EN 61000-4-11; AC Mains Ports
EN 60950: 2000
IEC 60825-1:1993+A1:1997+A2:2001

Manufacturer: ASKEY COMPUTER CORP.
10F, NO. 119, ChienKang Rd., Chung-Ho,
Taipei, Taiwan, R.O.C.

Year of Manufacture: 2004

Manufacturer's Address in the European Community: PSION TEKLOGIX S.A.
La Duranne; 135 Rue Rene Descartes; BP 421000
13591 Aix-En-Provence
Cedex 3; France

Type of Equipment: Information Technology Equipment

Equipment Class: Commercial and Light Industrial

I the undersigned hereby declare that the equipment specified above conforms to the above directives and standards.

Manufacturer:

Legal Representative in Europe:

Signature

Signature

John Chiou

Dominique Binckly

Position

Position

Product Certification Manager

Vice President International Sales

Place

Place

ASKEY COMPUTER, TAIPEI

PSION TEKLOGIX S.A. France

FCC DECLARATION OF CONFORMITY (DoC)

Applicant's Name & Address:

ASKEY COMPUTER CORP.
10F, NO. 119, ChienKang Rd., Chung-Ho,
Taipei, Taiwan, R.O.C.

Contact Person: Piyang Chiang
Telephone No.: (510) 440-8694
47849 FREMONT BLVD. FREMONT,
CA, 94538, USA

US Representative's Name & Address:

PSION TEKLOGIX
1810 Airport Exchange Blvd., Suite 500
Erlanger, KY, 41018, USA

Contact Person: Kyle Day
Telephone No.: (859) 372-4329

Equipment Type/Environment:

Computing Devices

Trade Name / Model No.:

WORKABOUT PRO, Model 7525

Year of Manufacture:

2004

Standard(s) to which Conformity is Declared:

The WORKABOUT PRO, model 7525, supplied by Askey Computer Corp., has been tested and found to comply **with FCC PART 15, SUBPART B - UNINTENTIONAL RADIATORS, CLASS B COMPUTING DEVICES FOR HOME & OFFICE USE.**

I, the undersigned, hereby declare that the equipment as tested is representative within manufacturing tolerance to units.

Applicant

Legal Representative in U.S.

Signature

Signature

Piyang Chiang

Kyle Day

Full Name

Full Name

General Manager

V.P. Channel Sales

Position

Position

Askey International Corp

Erlanger, KY 41018, USA

Place

Place

Feb. 4, 2004

Feb. 4, 2004

Date

Date

Approvals And Safety Summary

This equipment complies with Class B Part 15 of the FCC rules.

Operation is subject to the following two conditions:

1. This device may not cause harmful interference, and
2. This device must accept any interference received, including interference that may cause undesired operation.

Changes or modifications not expressly approved by Psion Teklogix, the party responsible for compliance, may void the user's authority to operate the equipment.

1. FCC Information to Users

For Class B Unintentional Radiators:

This equipment has been tested and found to comply with the limits for a Class B digital device, pursuant to Part 15 of the FCC Rules. These limits are designed to provide reasonable protection against harmful interference in a residential installation. This equipment generates, uses, and can radiate radio frequency energy and, if not installed and used in accordance with the instruction manual, may cause harmful interference to radio communications. However, there is no guarantee that interference will not occur in a particular installation. If this equipment does cause harmful interference to radio or television reception, which can be determined by turning the equipment off and on, the user is encouraged to try to correct the interference by one of more of the following measures:

- Reorient or relocate the receiving antenna
- Increase the separation between the equipment and receiver
- Connect the equipment into an outlet on a circuit different from that to which the receiver is connected.
- Consult the dealer or an experienced radio/TV technician for help.

2. Warning to Users



Warning: Changes or modifications not expressly approved by Psion Teklogix Inc. could void the user's authority to operate the equipment.

Approvals And Safety Summary

This product complies with CDRH 21 CFR 1040 Class II and IEC 60825-1:1993+A1:1997+A2:2001 laser product.



LASER WARNINGS

For your own safety, it is critical that you comply with the following warnings:



CAUTION

The laser aperture is located in the front of terminal. Do not look into the laser beam or point the beam at people or animals.



CAUTION

Using controls or adjustments, or performing procedures other than those specified herein may result in hazardous radiation exposure.



CAUTION

The use of optical instruments with this product will increase eye hazard.

This product contains a laser scanner that emits less than 1.2 mW maximum radiant power at a wavelength of 650nm to 680nm. This product complies with CDRH 21 CFR 1040 Class II and IEC 60825-1:1993+A1:1997+A2:2001 Class 2 laser product.



DO NOT OPERATE IN AN EXPLOSIVE ATMOSPHERE

Operating Psion Teklogix equipment where explosive gas is present may result in an explosion.



DO NOT REMOVE COVERS OR OPEN ENCLOSURES

To avoid injury, the equipment covers and enclosures should only be removed by qualified service personnel. Do not operate the equipment without the covers and enclosures properly installed.

Before removing the cover and enclosures, remove the battery pack at first

Approvals And Safety Summary



CAUTION!

Danger of explosion if a battery is incorrectly handled, charged, disposed of or replaced. Replace only with the same or equivalent type recommended by the manufacturer. Dispose of used batteries according to the instructions described in “Lithium Ion Battery Safety Precautions” on page 140. Carefully review all battery safety issues.



VORSICHT!

Explosionsgefahr bei unsachgemäßem Austausch der Batterie Ersatz nur durch denselben oder einen vom Hersteller empfohlenen gleichwertigen Typ. Entsorgung gebrauchter Batterien nach Angaben des Herstellers.

INTRODUCTION

1

1.1 About This Manual	3
1.2 Text Conventions	4
1.3 About The WORKABOUT PRO Hand-Held Computer	4
1.3.1 Features	4
1.3.2 The WORKABOUT PRO Hand-Held Computer	9
1.3.3 Regulatory Labels	10

1.1 About This Manual

This manual describes how to configure, operate and maintain the WORKABOUT PRO hand-held computer.

Chapter 1: Introduction

provides a basic overview of the WORKABOUT PRO hand-held.

Chapter 2: Basic Checkout

describes the steps required to get the unit ready for operation.

Chapter 3: Getting To Know The WORKABOUT PRO

describes the features and outlines how to charge and maintain the battery. This chapter also provides indicators, installing a SD/MMC card and general maintenance.

Chapter 4: Working With Windows CE .NET

describes the Microsoft® Windows CE .NET desktop and how to use it. This chapter also outlines the basics of moving around a Windows CE .NET window, selecting and opening icons, files, folders and working with a dialogue box.

Chapter 5: Configuration

provides a description of the Windows CE .NET Control Panel and how to use it to configure the WORKABOUT PRO, along with the scanners attached to the hand-held, and so on.

Chapter 6: Connecting To A LAN With 802.11b

describes how to insert and configure an 802.11b radio.

Chapter 7: Expansion Modules

provides instructions about installing expansion modules – the PCMCIA module, the GSM/GPRS module and the scanner module.

Chapter 8: Peripheral Devices & Accessories

describes the peripherals and accessories available for your hand-held.

Chapter 9: Specifications

details radio, hand-held computer, scanner and battery specifications.

Appendix A: Support Services And Worldwide Offices

provides the helpdesk phone number at the Mississauga, Ontario, Canada office and details the support services available. This appendix also lists the worldwide office addresses and phone numbers.

Appendix B: Port Pinouts

includes port pinouts.

Appendix C: USB Setup Application

details how to use the USB Setup application.

1.2 Text Conventions



Note: *Notes highlight additional helpful information.*



Important: *These statements provide particularly important instructions or additional information that is critical to the operation of the equipment.*



Warning: *These statements provide critical information that may prevent physical injury, equipment damage or data loss.*

1.3 About The WORKABOUT PRO Hand-Held Computer

The WORKABOUT PRO is a ruggedized hand-held personal computer, running the Microsoft® Windows CE .NET operating system. It is intended for use in commercial and light industrial applications with a focus on real time wireless data transactions. This hand-held is optimized for mobile computing applications and third party expansion. It is available with a monochrome or colour touchscreen.

1.3.1 Features

- Rugged design:
 - sealed from water and dust to IP54 (light rain) rating.
 - withstands multiple drops of up to 1.2m (4 ft.) drop to concrete.
- WORKABOUT PRO Model Variants
 - WORKABOUT PRO M:
 - Monochrome touchscreen display
 - 32 MB Flash
 - 64 MB RAM
 - WORKABOUT PRO C:
 - 32 MB Flash
 - 128 MB RAM

- Integrated Bluetooth
- Processor:
 - 400 MHz Intel Xscale PXA255
- Operating System:
 - Microsoft Windows CE .NET 4.2
- Programming Environment:
 - HTML, XML
 - Psion Teklogix Mobile Devices SDK
 - HDK - Hardware Development Kit for third-party developed expansion modules.
 - Compact Framework
 - java
 - Standard protocol APIs
Windows sockets (Windows CE .NET)
 - Psion Teklogix Mobile SDK
- Wireless Communications:
 - Optional expansion modules for:
 - 802.11b (via expansion interface)
 - GSM/GPRS (via expansion interface)
 - CDMA/1xRTT (via expansion interface) (*future project*)
 - Internet Bluetooth class II, version 1.1 standard on WORKABOUT PRO C
Note: WAN, 802.11b and Bluetooth are available simultaneously on WORKABOUT PRO C units.
- Application Software:
 - Internet Explorer 6.0 for CE
 - Open TekTerm (optional)
 - ANSI, TESS terminal emulations IBM 3270, IBM 5250, HP 2392 (optional)

Features

- User Interface:
 - Monochrome Touchscreen Display
 - 3.5 in. (8.9 cm) diagonal, 1/4 VGA 240 x 320 transfective portrait mode LCD
 - Backlight on/off control, adjustable contrast
 - Sunlight readable for outdoor use
 - High reliability EL backlight
 - Colour Touchscreen Display
 - 3.5 in. (8.9 cm) diagonal 1/4 VGA, 240 x 320 transfective portrait mode TFT
 - 16-bit colour
 - Adjustable backlight
 - Sunlight readable for outdoor use
 - High reliability LED backlight
 - Touchscreen
 - Passive stylus or finger operation
 - Signature capture
 - Stylus held on main unit
 - Keyboards
 - Alphanumeric
 - Ergonomic ambidextrous one-hand operation
 - Backlit, high durability hard-capped keys
 - Indicators and Controls
 - Internal speaker with volume control
 - LED indicating battery charge status
- Bar Code Applications:
 - Optional 2D Imager expansion module*
 - Optional 1D SE 1223HP laser scanner expansion module*
 - Optional field-upgradeable/replaceable pistol grip*
 - * Note: All are field upgradeable
- Expansion Slots:
 - One SD/MMC memory card slot – user accessible

- 100 Pin High-Speed Expansion connector, accessible through end-cap or back cover
Supports serial, USB, PCMCIA
- Type II Compact Flash slot accessible through end-cap
- Other Expansion Modules:
 - Type II PCMCIA slot – field upgradeable
 - Third Party accessories
- External Ports:
 - USB Host port on base of tethered USB devices (printers, etc.)
 - Low Insertion Force Docking Station Port with:
USB device port
USB Host port
Power
- Power Management:
 - Lithium Ion 3.7V Standard Battery
 - Long life Lithium Ion 3.7V High-Capacity Battery
 - Quick swap pack
 - Advanced Smart Battery with gas gauge
 - 3 power source options:
Battery
Wall adaptor
Cigarette light adaptor
 - Built-in charger
 - Also accepts standard consumer available AA Alkaline batteries
 - Rechargeable, user replaceable coin-cell backup battery
- Environmental (Standard):
 - Operating temperature: 14° F to 122° F (-10° C to 50° C)
 - Storage temperature: -13° F to 140° F (-25° C to 60° C)
 - Humidity: 5-95% RH non-condensing
 - Rain/Dust: IEC 529, classification IP54
 - Shock: Multiple 4 ft. (1.2m) drops to polished concrete
- Power Accessories
 - AC Wall adaptor (charge and operate hand-held)

Features

- Single battery charger
- Quad battery charger
- Charger/Docking Station (charges hand-held and spare battery)
- Vehicle cradle with optional charge capability
- Automotive adaptor
- Communication Accessories:
 - Quad Dock (4-site) with 10/100BaseT Ethernet and charge functions
 - Desktop Charger/Docking Station supports USB host and device ports and optional 10/100Base T Ethernet module.
 - Powered/non-powered cradle for vehicle applications
 - Port Replicator for vehicle cradles (field installable option) includes 3 RS232 ports plus USB device port.
- Carrying Accessories:
 - handstrap, pistol grip w/ trigger, shoulder strap.
 - holster, belt loop, protective vinyl carrying case with belt clip.

1.3.2 The WORKABOUT PRO Hand-Held Computer



Figure 1.1 WORKABOUT PRO



Figure 1.2 Tether Port, Low Insertion Force (LIF) Port And Audio Jack

1.3.3 Regulatory Labels



Warning: *Using controls or adjustments or performing procedures other than those specified herein may result in hazardous radiation exposure.*



Figure 1.3 Scanner Module—Laser Warning Label

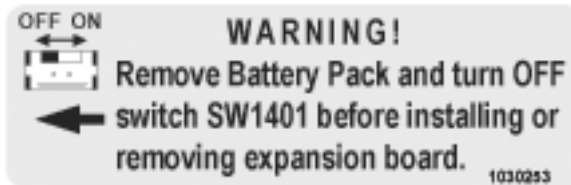


Figure 1.4 End- Cap—Expansion Module Warning

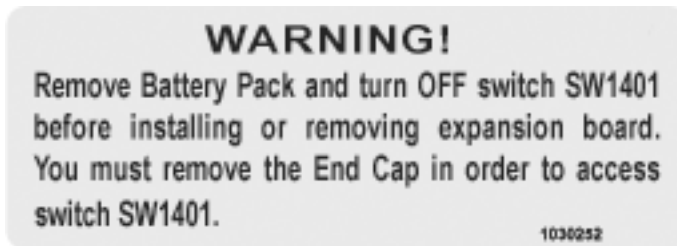


Figure 1.5 Back Plate—Expansion Module Warning Label



Figure 1.6 Manufacturer Label – WORKABOUT PRO C Unit



Figure 1.7 Manufacturer Label – WORKABOUT PRO M Unit



Figure 1.8 FCC Compliance Label

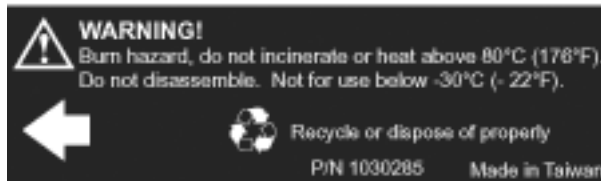


Figure 1.9 Standard Capacity Battery Label

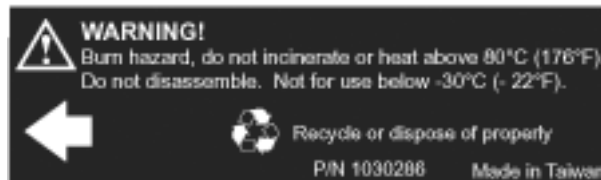


Figure 1.10 High-Capacity Battery Label

BASIC CHECKOUT

2

2.1	Preparing The WORKABOUT PRO For Operation	15
2.1.1	The Main Battery	15
2.1.2	Charging The Battery	15
2.1.3	The Internal Battery.	15
2.2	Turning The WORKABOUT PRO On and Off	15
2.2.1	Installing The Battery And Switching The Unit On	15
2.3	Connecting The WORKABOUT PRO To A PC	16
2.3.1	Using Microsoft® ActiveSync® To Work With Files	16
2.4	Calibrating The Touchscreen	17
2.5	Resetting The WORKABOUT PRO Hand-Held	17

2.1 Preparing The WORKABOUT PRO For Operation

2.1.1 The Main Battery

The WORKABOUT PRO can be powered with one of the following battery packs:

- Standard Battery
- High-Capacity Battery, *or*
- 3 AA alkaline batteries.

2.1.2 Charging The Battery



Important: *It is critical that you review the battery safety guidelines in “Lithium Ion Battery Safety Precautions” on page 140 before charging the battery.*

Battery packs shipped from the factory are not charged. They must be fully charged prior to use. Full capacity may not be reached until at least 5 full charge/discharge cycles have been performed.

Batteries can be charged using a variety of chargers and docking stations along with a Workabout internal charger. When using the internal charger, a suitable power source is required. All chargers and docking stations are described in *Chapter 8: Peripheral Devices & Accessories* beginning on page 150.

2.1.3 The Internal Battery

To preserve data stored in your WORKABOUT PRO while you swap the main battery, the unit is equipped with an internal battery – a standard Lithium Alloy Manganese Dioxide coin battery – a Maxell ML2032. This battery is easily accessible by removing the back cover of the unit.

2.2 Turning The WORKABOUT PRO On and Off

2.2.1 Installing The Battery And Switching The Unit On

- Turn the fasteners at the base of the battery cover counter-clockwise to unlock the cover and remove it. The top of the stylus is shaped to help you loosen the fasteners.
- Slide the *charged* battery into the unit. Replace the battery cover, and turn the fasteners at the base of the battery cover clockwise to lock the battery in place.

Switching The Unit Off (Suspend)



Note: *If you are using a docking station or an external power supply, you can insert an uncharged battery, dock the unit and switch it on.*

To switch on the WORKABOUT PRO:

- Press and hold down the <ENTER/ON> key for at least one second.
- When the LED flashes green, release the <ENTER/ON> button.

A splash screen displaying the Psion Teklogix logo and the Microsoft® Windows CE .NET logo appears followed by the startup desktop.



Note: *If the unit was already in use – the unit may be off (suspend state) – pressing <ENTER/ON> ‘wakes’ the unit from this state. The screen in which you were working prior to the suspend state is displayed.*

2.2.2 Switching The Unit Off (Suspend)

- Press the <BLUE> key, and then press <ENTER/ON> to switch off the WORKABOUT PRO.

2.3 Connecting The WORKABOUT PRO To A PC



Note: *Refer to “Linking A WORKABOUT PRO To A PC” on page 146 for more details about the desktop docking station and how to link to a PC.*

The WORKABOUT PRO can be connected to a PC using the desktop docking station.

- Insert the unit in the desktop docking station,
- Use the Client USB connector to complete the communication link between the hand-held and the PC.

2.3.1 Using Microsoft® ActiveSync® To Work With Files

ActiveSync® – Microsoft PC connectivity software – can be used to connect the WORKABOUT PRO to PCs running this software. By connecting the hand-held to a PC through your desktop docking station and running ActiveSync on the PC, you can view WORKABOUT PRO files, drag and drop files between the WORKABOUT PRO and the PC, back up WORKABOUT PRO files to the PC, and so on.



Note: *You’ll need the USB setup utility to configure the .ini file. For information about this USB application, refer to Appendix C: USB Setup Application.*

To install ActiveSync, follow the step-by-step instructions provided with the program's setup wizard. Refer to the following website for details:
<http://www.microsoft.com/windowsmobile/resources/downloads/pocketpc/activesync35.msp>

2.4 Calibrating The Touchscreen

Refer to “Calibrating The Touchscreen” on page 30 for details.

2.5 Resetting The WORKABOUT PRO Hand-Held



Important: *Because Psion Teklogix cannot guarantee what has been saved (registry) after a reset, this should be considered as a last resort.*

To reset the unit:

- Press and hold down the <BLUE> key and the <ENTER/ON> key simultaneously for a minimum of six seconds.

A reset results in a complete reboot of the unit. All RAM memory contents are lost. The contents of the flash memory and memory card may be preserved, but Psion Teklogix cannot guarantee this.



Note: *You do not need to reset your WORKABOUT PRO after configuring the radio.*

GETTING TO KNOW THE WORKABOUT PRO

3

3.1 Features Of The WORKABOUT PRO	21
3.2 The Batteries	22
3.2.1 Battery Safety	23
3.2.2 Removing And Installing The Battery Pack	23
3.2.3 Charging The Battery	24
3.3 Switching The Hand-Held On And Off	25
3.4 The Keyboard	26
3.4.1 Modifier Keys	27
3.4.1.1 Activating Modifier Keys	27
3.4.1.2 Locking Modifier Keys	27
3.4.2 The Keys	27
3.4.3 The Keypad Backlight	29
3.5 The Display	29
3.5.1 Colour Display	29
3.5.2 Monochrome Display	30
3.5.3 Calibrating The Touchscreen	30
3.6 Indicators	31
3.6.1 The LED	31
3.6.2 Onscreen Indicators	32
3.6.3 Audio Indicators	34
3.6.3.1 Adjusting The Speaker Volume	35
3.7 Monitoring The Battery And Maximizing Run Time	35
3.7.1 Storing Batteries	36
3.8 Uploading Data In A Docking Station	36
3.9 Bluetooth Radio	37
3.10 The SD/MMC Card – Adding Memory	37
3.10.1 Inserting The Card	37
3.11 General Maintenance	39
3.11.1 Caring For The Touchscreen	39
3.11.2 Cleaning The WORKABOUT PRO	39

3.1 Features Of The WORKABOUT PRO



Figure 3.1 Front Of WORKABOUT PRO M Or C

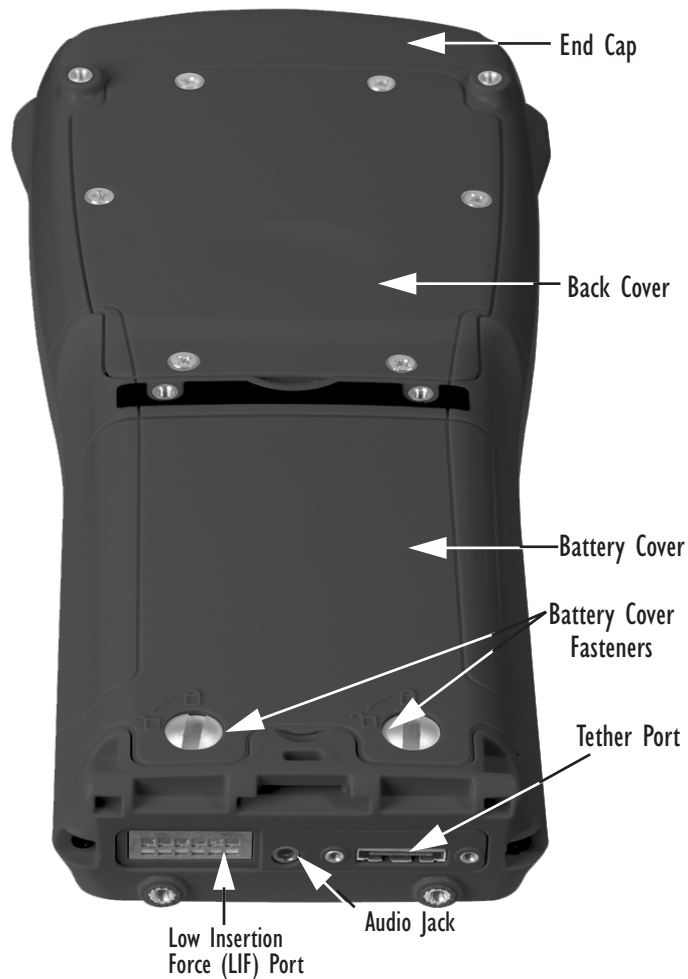


Figure 3.2 Back Of WORKABOUT PRO

3.2 The Batteries

The WORKABOUT PRO hand-held can operate with a Standard Lithium Ion battery pack, a High Capacity Lithium Ion battery pack or three AA alkaline batteries. If you are using a Lithium Ion battery pack, preparing the hand-held unit for operation requires that the battery pack be charged before it is installed in the unit.

To maintain data during a battery swap, the WORKABOUT PRO is also equipped with an easily accessible coin backup battery.



3.2.1 Battery Safety

Important: *Before attempting to install, use or charge the battery pack, it is **critical** that you review and follow the important safety guidelines in the section entitled “Lithium Ion Battery Safety Precautions” beginning on page 140.*

3.2.2 Removing And Installing The Battery Pack

Removing The Battery Cover

- Turn the fasteners at the base of the battery cover counter-clockwise to unlock the cover. The top of the stylus has a screwdriver shaped end to help you loosen the fasteners.
- Lift and remove the cover.

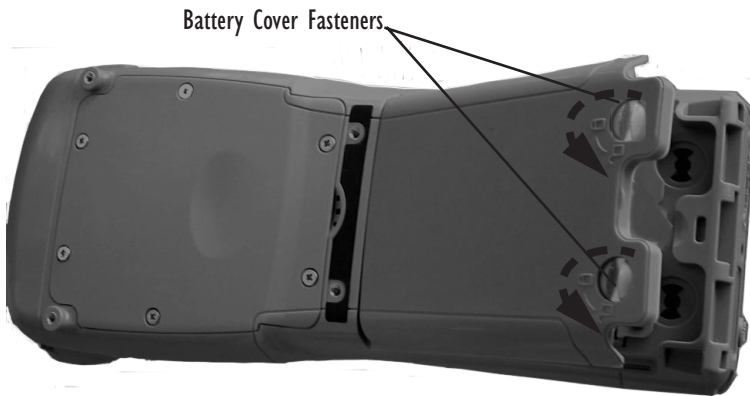


Figure 3.3 The Battery Cover

Installing The Battery

- Insert the **charged** battery in the unit.
- Replace the battery cover, and turn the fasteners at the base of the battery cover **clockwise** to lock the battery in place.



Note: *If you are using a docking station or other external power source, you can insert an uncharged battery, dock the unit and switch it on.*

3.2.3 Charging The Battery



Important: *FOR DETAILED INFORMATION about chargers and docking stations, refer to Chapter 8: Peripheral Devices & Accessories beginning on page 131.*

For battery safety, refer to “Lithium Ion Battery Safety Precautions” beginning on page 140.

Lithium Ion battery packs must be charged before use. These batteries can be charged with a variety of chargers and docking stations. These include:

- Desktop Docking Station (Model #WA4002) – operates as both a charger and a docking station. Operating as a charger, both the battery installed in the hand-held and a spare battery can be charged simultaneously.
- Quad Docking Station (Model #WA4004) – can charge the battery of up to four WORKABOUT PROs inserted in the docking station.
- Single Battery Charger (Model #WA3001) – charges a single battery.
- Quad Battery Charger (Model #WA3004) – charges up to four spare Standard or High-Capacity WORKABOUT PRO battery packs.

It can take up to 5 hours to charge a battery. The WORKABOUT PRO’s intelligent charging system protects the battery from over-charging by terminating the charge process when the battery is at maximum capacity.



Note: *Refer to “Monitoring The Battery And Maximizing Run Time” on page 35 for additional information about the battery.*



Important: *To avoid damaging the battery, chargers will not begin the charge process until the battery temperature is between 0° C to 45° C (32° F to 113° F).*

3.3 Switching The Hand-Held On And Off

Switching On The WORKABOUT PRO

- Press and hold down the <ENTER/ON> key for at least one second.
- When the LED flashes green, release the <ENTER/ON> button.

A splash screen displaying the Psion Teklogix logo and the Windows CE .NET logo appears followed by the startup desktop.



Note: *If the WORKABOUT PRO is in suspend state, pressing <ENTER/ON> key ‘wakes’ the unit from this state. The screen in which you were working before the computer entered suspend state is displayed.*

Switching Off The WORKABOUT PRO (Suspend)



Important: *Keep in mind that turning off the WORKABOUT PRO does not result in a complete reboot; rather, the unit enters a power-saving, “suspend” state. When the unit is turned on from suspend state, operation resumes within a few seconds.*

To switch off the WORKABOUT PRO:

- Press the <BLUE> key, and then press the <ENTER/ON> key.

3.4 The Keyboard

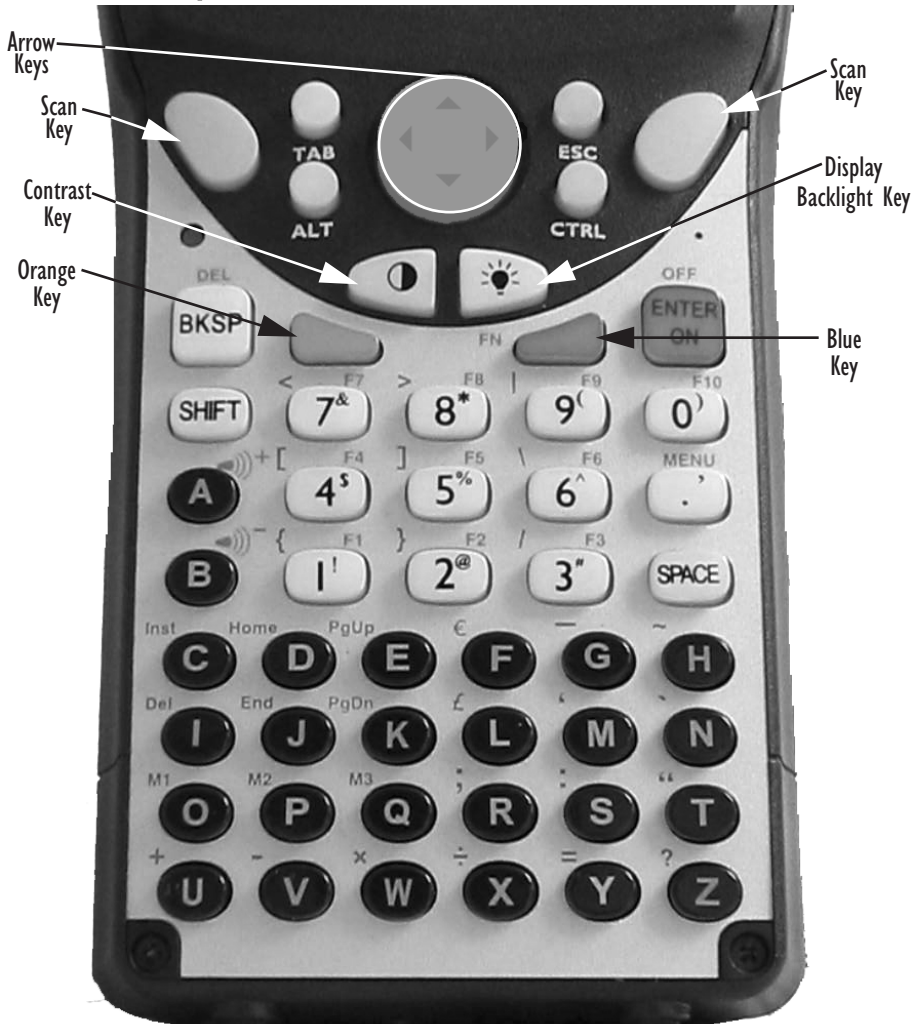


Figure 3.4 The Keys

The WORKABOUT PRO is equipped with a 55-key alphanumeric keyboard. Along with the standard keyboard keys, the <ORANGE> and <BLUE> modifier keys provide access to additional keys and system functions. These functions are colour coded in *orange* and *blue* print above the keyboard keys.



Note: *Almost all keys can be reprogrammed to suit your requirements.*

3.4.1 Modifier Keys

The <SHIFT>, <CTRL>, <ALT>, <ORANGE> and <BLUE> keys are *modifier* keys. Pressing a modifier key changes the function of the next key pressed. For example, a square bracket is printed in *orange* print above the <4> key. Pressing the <ORANGE> key followed by the <4> key displays a square bracket rather than the number 4.

The <SHIFT>, <CTRL> and <ALT> keys operate like a desktop keyboard except that they are not chorded (two keys held down simultaneously). The modifier key must be pressed first followed by the key whose function you want modified.

3.4.1.1 Activating Modifier Keys

When a modifier key is pressed once, it is displayed in lowercase letters in the taskbar at the bottom of the screen. For example, if the <CTRL> key is pressed once, *ctrl* key is displayed in the taskbar. Once the next key is pressed, the modifier key becomes inactive and disappears from the taskbar.

3.4.1.2 Locking Modifier Keys

When a modifier key is pressed twice, it is 'locked' on. A 'locked' modifier key is displayed in uppercase letters in the taskbar. For example, pressing the <BLUE> key twice locks it on – it is displayed as **BLUE KEY** in the taskbar at the bottom of the computer screen.

The locked modifier key will remain active until it is pressed a third time to unlock or turn it off. Once a modifier key is unlocked (pressed a third time), the uppercase representation in the taskbar is no longer displayed.



Note: *The locking function of the <ORANGE> and <BLUE> keys can be disabled so that pressing either of these keys **once** will lock the keys 'on'. Refer to "Keyboard One Shot Modes" on page 69 for details.*

3.4.2 The Keys

The <SHIFT> Key

The <SHIFT> key is used to display uppercase alpha characters and provide access to the symbols above the numeric keys. Pressing this key twice locks it 'on' so that when you press an alpha key, an upper case character is displayed. When you press a numeric key, the associated symbol on the numeric key is displayed

The Keys

The Arrow Keys

The Arrow keys are located on the grey circular key at the top of the keyboard, directly below the display. The arrow keys move the cursor around the screen – up, down, left and right. The cursor is the flashing box or underline character that indicates where the next character you type will appear.

The <BKSP/DEL> Key

The <BKSP> key (sometimes referred to as destructive backspace) moves the cursor one character to the left, erasing the incorrectly entered key stroke.

The key (<BLUE> <BKSP>) erases the character at the cursor position.

The <CTRL> And <ALT> Keys

The <CTRL> and <ALT> keys modify the function of the next key pressed and are application dependent.

The <TAB> Key

Typically, the <TAB> key moves the cursor to the next field to the right or downward.

The <ESC> Key

Generally, this key is used as a keyboard shortcut to close the current menu, dialogue box or activity and return to the previous one.

The <SPACE> Key

Pressing this key inserts a blank space between characters. In a Windows dialogue box, pressing the <SPACE> key enables (√) or disables a checkbox.

The <SCAN> Keys

Pressing either of the <SCAN> keys – the two yellow keys situated in upper-left and upper-right corner of the keyboard – activates the scanner beam. For units that **do not have** internal scanners, these keys are inoperable.

The Function Keys – <F1> to <F10>

Function keys <F1> to <F10> perform special, custom-defined functions. These keys are accessed by pressing <BLUE> followed by numeric keys <1> to <10>. They can be used with the Windows CE .NET operating system or another application.

The Macro Keys – <M1> to <M3>

Macro keys <M1> to <M3> contain up to 20 programmable characters (“positions”) and executable keys. These keys are accessed by pressing <ORANGE> followed by alpha keys <O>, <P> or <Q>. When pressed, the macro key executes a custom-defined string of characters, including executable keys.

3.4.3 The Keypad Backlight

The intensity of the keypad backlight and the conditions under which this backlight is activated can be configured using the Keyboard icon in the Control Panel. The behaviour of the keypad backlight is tailored in the Keyboard Properties dialogue box. Refer to “Keyboard Backlight” on page 68 for details about this option.



Note: Keep in mind that this option may be restricted to supervisory use only.

3.5 The Display

Depending on the type of display – colour or monochrome – you can adjust the backlight behaviour or the contrast of the display to improve character visibility.



Note: Display backlight and contrast adjustments may be restricted to supervisory use only.

3.5.1 Colour Display

Adjusting The Backlight



Note: For units equipped with monochrome screens, the Backlight key <☀> turns the backlight on or off. Backlight intensity cannot be adjusted.

On colour screens, the display backlight can be adjusted using the keyboard.

- Press the Backlight key <☀> to cycle from the lightest to darkest settings, and then back to lightest. Press <ORANGE> <☀> to cycle backward from darker to lighter.

To set the *range* of the backlight intensity and the duration of time that the backlight will remain on, you’ll need to choose the Display icon in the Control Panel. **Refer to “Display Backlight” on page 65** for details about the Display Properties Backlight tab.

3.5.2 Monochrome Display

Adjusting The Contrast



Note: Contrast adjustment is only available on hand-helds equipped with monochrome screens. Contrast has no effect on units with colour screens.

The display contrast can be adjusted from the keyboard using the Contrast key <◀▶> just below the arrow keys.

- Press this key until you are satisfied with the contrast adjustment. Press <ORANGE> <◀▶> to shift contrast backward.

To set the maximum *range* of the contrast on a monochrome screen, you'll need to choose the Display icon in the Control Panel. **Refer to “Display Contrast” on page 64 for details about the Display Properties Contrast tab.**

Keep in mind that this option may be restricted to supervisory use only

3.5.3 Calibrating The Touchscreen

If your touchscreen has never been calibrated or if you find that the stylus pointer is not accurate when you tap on an item, use the Stylus Properties dialogue box in the Control Panel to recalibrate the screen.

- In the Control Panel, choose the Stylus icon to display the Stylus Properties window.

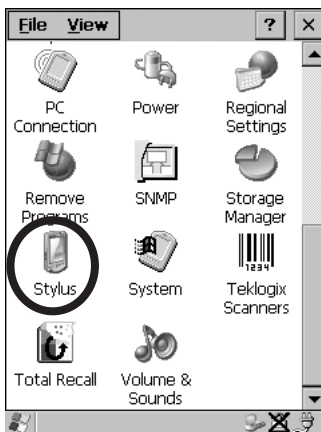


Figure 3.5 Stylus Icon

- Select the Calibration tab, and then tap on the 'Recalibrate' button.



Figure 3.6 Calibration Screen

- Follow the directions on the calibration screen to calibrate the screen.



Note: The Stylus Properties dialog box provides two additional tabs: Double-tap and Options. The Double-Tap tab allows you to adjust the sensitivity of the double-tap and the physical distance between taps. The Options tab allows you to disable the touchscreen.

3.6 Indicators

The WORKABOUT PRO uses an LED (Light Emitting Diode), onscreen messages and audio tones to indicate the various conditions of the hand-held, the batteries, the scans and so on.

3.6.1 The LED

The WORKABOUT PRO is equipped with a single, dual-coloured LED. When the <ENTER/ON> key is pressed, the LED flashes green to indicate that the unit has been powered up.

Onscreen Indicators

If the unit is attached to an external power supply, the hand-held LED reflects the battery charge status.

LED Behaviour	Charge Status
Off	No battery detected in the charge well.
Solid green	Battery is fully charged.
Fast flashing green	Battery is charged to 75% capacity.
Slow flashing green	Charge in progress.
Solid red	Battery is outside ambient temperature range of 0° C to 45° C (32° F to 113° F).
Flashing red	Charge alarm indicating a charging circuit problem. Refer to “Troubleshooting” on page 151 for details.
Flashing red then green in a 3 second cycle	Power up test sequence.

Table 3.1 WORKABOUT PRO LED BEHAVIOUR



Note: *The application installed on your WORKABOUT may alter the behaviour of the LED on your unit. Refer to your application manual for details.*

3.6.2 Onscreen Indicators

The taskbar at the bottom of the screen displays a variety of system status indicators.



Figure 3.7 Taskbar

Taskbar icons change dynamically, and only those icons that are applicable are displayed. For example, if a Bluetooth radio is not installed in your hand-held, the Bluetooth radio icon is not displayed in the taskbar.



Note: To access these icons and display the associated menu and dialogue boxes, refer to “Using The Taskbar” on page 46.



Windows® Start Button

This icon provides access to the Start Menu. Tapping on the Windows® Start button displays the menu.



Modifier Key Indicators

<SHIFT>, <CTRL>, <ALT>, <BLUE> and <ORANGE> are modifier keys that have associated onscreen indicators to show when a key is active or locked. If a modifier key is pressed once to activate it, the key is displayed in the taskbar in *lowercase* characters – for example, pressing the <BLUE> key once displays ‘blue key’ in the taskbar. If a modifier key is pressed twice, it is ‘locked on’ and the onscreen indicator is displayed in *uppercase* letters in the taskbar – for example, pressing <BLUE> twice displays ‘BLUE KEY’ in the taskbar.



Battery Gauge

The battery shaped icon displayed in the taskbar provides a visual indication of the remaining battery power. The icon acts as a meter that is either full, at three-quarter level, half, quarter level or empty.

When the battery level is low – approximately 15 minutes from empty – a warning window pops up. When the battery power is completely depleted, a final warning window indicates that the WORKABOUT PRO will be powered down.

If the unit is being powered externally, an external power icon is displayed in the taskbar.



Full



75%



50%



25%



Empty



External Power

Audio Indicators



Battery Charge

The battery charge icon is displayed in the taskbar when the battery is being charged.



LIF and USB Devices

When a device such as a docking station or a charger is connected to the USB (tether) port or the LIF (Low Insertion Force) port and is activated, an associated icon appears in the taskbar. A message also appears on the screen recognizing that a new device has been connected through either the USB or the LIF port.



New device connected:
LIF Port



New device connected:
USB Port



Bluetooth Radio



If a Bluetooth radio is installed in your unit, this icon is displayed in the taskbar.



Security Level


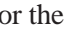
Security levels can be set to limit user access to the settings. In addition, applications can be restricted to prevent inadvertent changes.

3.6.3 Audio Indicators

The audio speaker provides a variety of sounds and can be configured to emit a sound when a key is pressed, a keyboard character is rejected, scan input is accepted or rejected, an operator's entry does not match in a match field or the battery is low. The volume keys are located above the <A> and keys. The *increase* volume key is labelled with a plus symbol  and the *decrease* volume key is labelled with a minus symbol .

3.6.3.1 Adjusting The Speaker Volume

To adjust the speaker volume:

- Press the <BLUE> key twice to lock the key ‘on’ and then, press the *increase volume* key  or the *decrease volume* key  key until the volume meets your requirements.
- Remember to press the <BLUE> key again to turn it ‘off’.

3.7 Monitoring The Battery And Maximizing Run Time

Under normal operating conditions, fully charged Standard Batteries hold a charge for up to 8 hours. High-Capacity batteries can hold a charge for up to 12 hours.

As Lithium Ion batteries age, their capacity decreases gradually, and they are generally considered depleted after approximately 2 years of use (less than 60% of original capacity remaining). Keep in mind however that heavy usage or operating the unit at temperature extremes will shorten the battery life.

Lithium Ion batteries do not require conditioning cycles and the WORKABOUT PRO battery system (including chargers) requires no user interaction to maintain peak performance.

To maximize the run time of your batteries, consider the following:

- The display backlight is the largest drain on the battery. Try to keep its brightness as low as possible.
- The hand-held is ‘event’ driven – that is, when the unit is not in use, it reverts to *sleep* mode (even when it appears to be running), saving battery power. Events include a key press, touchscreen taps and scan triggers. Power consumption is reduced if you avoid unnecessary events, and allow the unit to *sleep* as much as possible.
- The battery is a ‘smart battery’ with built-in intelligence. The taskbar battery icon is a linear gauge used to estimate the remaining run time of the battery. It is important to note that the battery capacity icon displays quarter percentages of *nominal* capacity (the capacity of a new battery). An aged battery, even when fully charged, shows somewhat less capacity than nominal.

Double-tapping on the battery icon displays a dialogue box that provides detailed information about the battery status and performance.

Storing Batteries

- When the hand-held is switched off, it goes into a low-power, suspend state but continues to draw a small amount of power from the battery. This should not be an issue unless the unit is left in suspend state for more than a week – in this case, the battery should be removed.

3.7.1 Storing Batteries

Long term battery storage is not recommended. If storage is necessary:

- Always try to use a ‘first-in first-out’ approach to minimize storage time.
- Lithium Ion batteries age much faster at elevated temperatures. Store batteries at temperatures between 0° C and 20°C.
- Always charge batteries to at least 40 to 60% before storing them. Batteries can be damaged by an over-discharge phenomenon that occurs when an empty battery is stored for a long period of time such that the cell voltage drops below a lower limit.
- To minimize storage degradation, recharge stored batteries to 40 to 60% every 4 or 6 months to prevent over-discharge damage.
- A ‘never used’ Li-Ion battery that has been stored for 3 years may have limited or no useful life remaining once put into service. Think of batteries as perishable goods.

3.8 Uploading Data In A Docking Station



Important: *Review the documentation provided with the user application installed in your WORKABOUT PRO before performing data uploads.*

The *desktop docking station* and *quad docking station* allows the WORKABOUT PRO to link to an Ethernet network. They are typically used to upload transaction data to a server computer when a radio link is not available.



Note: *Refer to “Chargers And Docking Stations” on page 141 for more details.*

The desktop docking station can complete batch uploads to a Client USB connected PC or server. An optional 10/100baseT Ethernet module is also available.

Unlike the desktop docking station, the quad docking station supports only TCP/IP connections to a PC or server through a 10/100baseT Ethernet connection.

When a WORKABOUT PRO is properly inserted in a docking station, a dock icon is displayed in the taskbar at the bottom of the screen. The unit also detects the presence of the Ethernet network.

3.9 Bluetooth Radio



Note: *Integrated Bluetooth class II radios are standard on WORKABOUT PRO C units. Keep in mind also that Bluetooth is available simultaneously with WAN and 802.11b on a single unit.*

A WORKABOUT PRO C is equipped with an on-board Bluetooth radio. This type of radio enables short range data communication between devices. The Bluetooth also provides the capability to use a Bluetooth-enabled cellular phone as a data modem, exchanging information with other Bluetooth devices and providing network access. Keep in mind too that a Bluetooth and an 802.11b radio card can operate simultaneously in your unit. Refer to “The Bluetooth GPRS Phone” on page 84 for setup details.

3.10 The SD/MMC Card — Adding Memory

To add additional non-volatile memory to your hand-held, you can insert a Secure Digital/Multi-Media Card (SD/MMC) through the battery compartment.

3.10.1 Inserting The Card

- Remove the battery cover and the battery.

A hinged door at the top of the battery compartment protects the connectors.

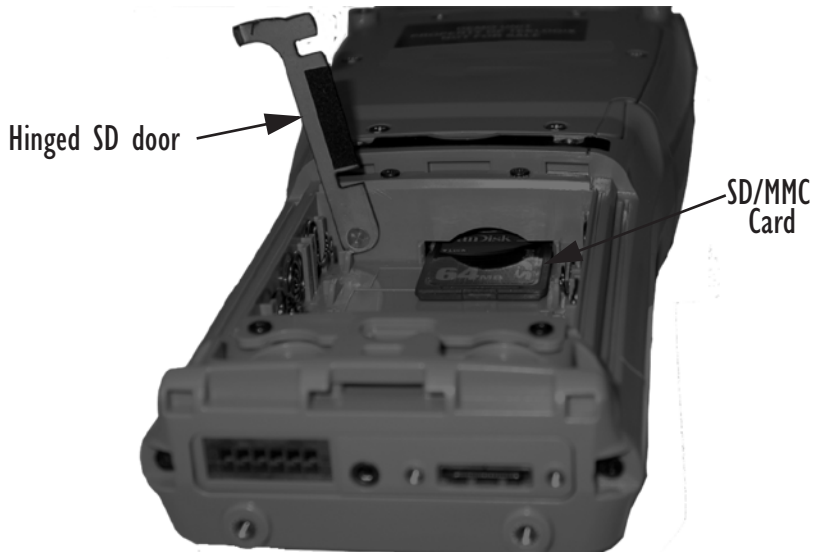


Figure 3.8 Inserting the SD/MMC Card

- Lift the hinged SD door by gently pulling upward on the metal tab.
- Orient the SD/MMC card according to the legend stamped into the battery well plastic.
- Place the card in the slot with the card contacts down, and slide it inward until it latches into place.
- Swing hinged door back into place.

To remove the card:

- Gently press it inward slightly until the detent unlatches, and the card is expelled from the slot.

3.11 General Maintenance

3.11.1 Caring For The Touchscreen

The top of the touchscreen is a thin, flexible polyester plastic sheet with a conductive coating on the inside. The polyester can be permanently damaged by harsh chemicals and is susceptible to abrasions and scratches. Using sharp objects on the touchscreen can scratch or cut the plastic, or crack the internal conductive coating.

The chemicals listed below must not come into contact with the touchscreen:

- mustard,
- sodium hydroxide,
- concentrated caustic solutions,
- benzyl alcohol, and
- concentrated miner acids.

If the touchscreen is used in harsh environments, consider applying a disposable screen protector (WA6110). These covers reduce the clarity of the display slightly but will dramatically extend the useful life of the touchscreen. When they become scratched and abraded, they are easily removed and replaced.

3.11.2 Cleaning The WORKABOUT PRO



Important: *Do not immerse the unit in water. Dampen a soft cloth with mild detergent to wipe the unit clean.*

- Use **only** mild detergent or soapy water to clean the hand-held unit.
- Avoid abrasive cleaners, solvents or strong chemicals for cleaning. The plastic case is susceptible to harsh chemicals. The plastic is partially soluble in oils, mineral spirits and gasoline. The plastic slowly decomposes in strong alkaline solutions.
- To clean ink marks from the keypad and touchscreen, use isopropyl alcohol.

WORKING WITH WINDOWS CE .NET

4.1 Navigating In Windows CE .NET And Applications	43
4.1.1 Navigating Using A Touchscreen And Stylus	43
4.1.2 Navigating Using The Keyboard	43
4.2 Working With Files, Folders And Programs	44
4.3 The Startup Desktop	44
4.3.1 The Desktop Icons	45
4.3.2 The Taskbar	46
4.4 The Start Menu	47
4.4.1 The Desktop	48
4.4.2 Security Settings	48
4.4.3 The System Tray	49
4.4.4 The Task Manager	50
4.4.5 Cycle Tasks	50
4.4.6 Power Info	50
4.4.7 Programs	51
4.4.8 Settings	52
4.4.9 Run	53
4.4.10 Shutdown	54
4.5 Using A Dialogue Box	55

4.1 Navigating In Windows CE .NET And Applications

Graphic user interfaces like Windows CE .NET for portable devices or desktop Windows (2000, XP, etc.) utilize ‘point and click’ navigation. On the WORKABOUT PRO, this is accomplished using a touchscreen and stylus rather than a mouse. An equivalent keyboard shortcut is also available for every ‘point and click’ action.

4.1.1 Navigating Using A Touchscreen And Stylus



Note: *If the touchscreen is not registering your screen taps accurately, it may need recalibration. Refer to “Calibrating The Touchscreen” on page 30.*

A touchscreen is a **standard** feature on all WORKABOUT PROs. Each is equipped with a *stylus* – a pointing tool that looks like a pen – stored in a slot at the top of the unit. The stylus is used to select objects on the touchscreen.

- Tap the stylus on the appropriate icon to open a file or launch an applet.

4.1.2 Navigating Using The Keyboard

If the touchscreen on your unit is disabled, choosing icons and navigating dialogue boxes, displaying the desktop, and so on will require keyboard input.

Operation	Key or Key Combination
Switch between active applications	<ALT> <TAB>
Open task manager	<ALT> <ESC>
Move the cursor	Arrow keys
Open file, folder or icon	<ENTER>
Exit & Save	<ENTER>
Close/Exit & Do Not Save	<ESC>
Navigate Dialogue Boxes	<TAB> To move cursor up <SHIFT> <TAB> To display contents of the next ‘tab’ <CTRL><TAB>
Select Radio Button/Press Button	<SPACE>
Go to Start Menu	<BLUE><. >

Table 4.1 Keyboard Navigation

Keep in mind that unlike a desktop computer, the WORKABOUT PRO does not support key chording (pressing two keys at the same time). You must press one key followed by the next in sequence.

4.2 Working With Files, Folders And Programs

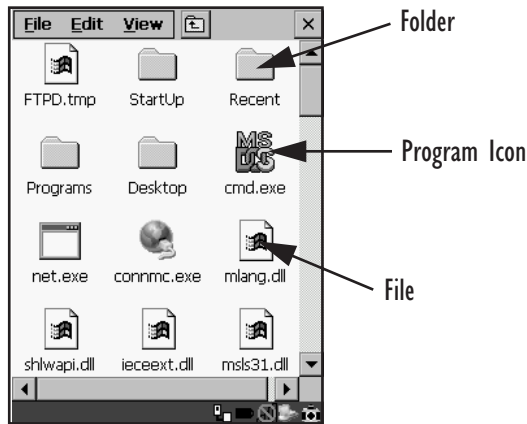


Figure 4.1 Working With Windows Icons

- Double-tap on the appropriate icon – a folder icon, a program icon or a file icon – to open or launch your selection.

4.3 The Startup Desktop

When the WORKABOUT PRO boots up, the startup desktop (shell) is displayed. Any applications stored in the Startup folder start up immediately.



Figure 4.2 The WORKABOUT PRO Startup Desktop



Note: The startup folder is in: \Windows\StartUp and \Flash Disk\Start Up.

- Tap on an icon to open a window or, in the case of an application icon, launch an application.

4.3.1 The Desktop Icons

The icons displayed in the startup desktop operate in much the same way as those displayed on any standard PC desktop that is running Windows®.

My Computer

Choosing this icon displays the contents of your WORKABOUT PRO. If you're not sure how to work with the files, folders and programs displayed, refer to "Working With Files, Folders And Programs" on page 44.

Recycle Bin

This option temporarily contains items that were deleted, allowing you to either permanently delete or restore the items.

Command Prompt

Command Prompt is used to access the DOS command prompt. At the prompt, you can type DOS commands such as *dir* to display all the directories in the drive.

Inbox

Inbox is used to access and view your email.

Internet Explorer

Choosing this icon launches Internet Explorer – a standard Windows CE .NET version. Keep in mind that your supervisor will need to set up access using the Internet Options and the Network and Dial-up Connections icons in the Control Panel.

Microsoft Wordpad

This application, an abbreviated version of Microsoft Word, allows you to create documents on the WORKABOUT PRO.

Remote Desktop Connection

This option allows your WORKABOUT PRO to communicate with a remote desktop PC. "Remote Desktop Connection" on page 59 provides a website address with step-by-step instructions.

4.3.2 The Taskbar

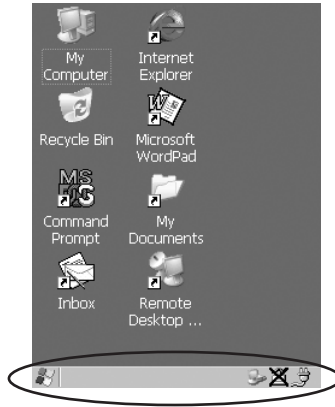


Figure 4.3 The Taskbar

The WORKABOUT PRO is equipped with a taskbar at the bottom of the screen. It displays icons through which you can view the battery capacity and identify any active modifier keys – <SHIFT>, <ALT>, <CTRL>, <ORANGE> and <BLUE>. Keys that have been locked “on” are displayed in *uppercase* letters. When a peripheral is attached to the tether or LIF port, the associated icon is displayed. In addition, the taskbar displays the application(s) currently running on your unit and the security level assigned to it.

4.3.2.1 Using The Taskbar

- Using the stylus, tap on an icon to display the associated dialogue box. For example, tap on the battery icon to display a **Power Properties** dialogue box that indicates the current battery capacity.



Note: If your touchscreen is disabled, type <BLUE> <. > <Y> to choose **S**ystem Tray from the Start Menu. Press the <LEFT> or <RIGHT> arrow keys to choose a taskbar icon and press <ENTER> to display the associated dialogue box.

4.3.2.2 Customizing The Taskbar

To customize the taskbar so that it displays only those icons you require:

- Tap on the **S**ettings option, and then tap on **T**askbar... in the sub-menu,

The Taskbar and Start Menu dialogue box is displayed.

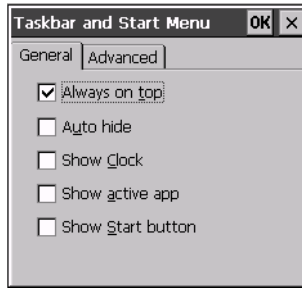


Figure 4.4 Taskbar And Start Menu Settings

- Tap the stylus on the items you want to activate or deactivate. A check mark indicates an active item.

4.4 The Start Menu



Note: Some of the Start Menu items may be disabled based on the WORK-ABOUT PRO's current security settings.

The Start Menu lists the operations you can access and work with. It is available from the startup desktop or from within any application.

To display the menu:

- Tap on the Windows® Start button in the left-most corner of the taskbar.

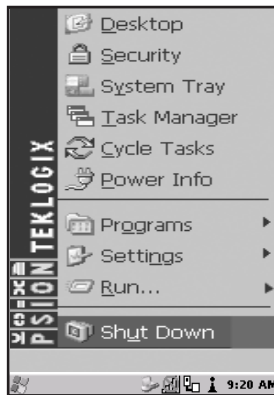


Figure 4.5 Start Menu

- Tap on the item in the menu with which you want to work.

4.4.1 The Desktop

Choosing the Desktop option from the Start Menu displays the WORKABOUT PRO desktop.

4.4.2 Security Settings

Choosing the Security option from the Start Menu displays a dialogue box in which you can define the WORKABOUT PRO access level – Teklogix, Supervisor or User.



Figure 4.6 Security Levels

Security Level

These security levels define the options accessible to the operator in the Start Menu and the taskbar. When you change security levels, you'll need to enter the appropriate password in the Password textbox. The security level is represented by an icon in the shape of a lock in the taskbar.

Changing A Password



Note: Keep in mind that this is the same password as that assigned through the Password control panel applet. Refer to “Control Panel Icons” on page 60.

To assign a password:

- Choose a security level, and enter the existing password in the Password field
- Choose the Set Password button.

A dialogue box labelled Password Properties is displayed.

- Type the new password in the Password: text box
- In the Confirm Password: text box, retype the new password.

Configuring Security

Choosing the Configure button displays the Configure Security dialogue box.



Figure 4.7 Configuring Security

This dialogue box allows you to determine which security levels will have an associated icon displayed in the taskbar. By default, a security icon is not displayed for user-level security.



4.4.3 The System Tray

Note: This option is useful if your touchscreen has been disabled. Activating System Tray allows you to access taskbar icons using keyboard keys in place of the stylus.

The System Tray option allows access to the icons in the taskbar using your keyboard. The taskbar displays indicators such as a battery capacity gauge and the security level. These indicators are attached to dialogue boxes that provide additional information.

- Choose System Tray from the Start Menu.

To display the dialogue box attached to an icon:

- Press the <LEFT> or <RIGHT> arrow keys to choose a taskbar icon and press <ENTER> to display the associated dialogue box.

4.4.4 The Task Manager

The Task Manager option allows you to switch to another task or to end an active task. To display the task manager window:

- Tap on the Task Manager in the Start Menu.

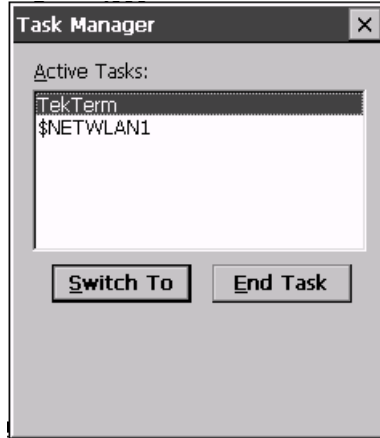


Figure 4.8 Task Manager

4.4.5 Cycle Tasks

When Cycle Tasks is selected (and the Task Manager is not open), you can cycle through active applications. To choose this option:

- Tap on Cycle Tasks in the Start Menu.

4.4.6 Power Info

Selecting Power Info from the Start Menu displays the Power Properties dialogue box. This dialogue box indicates the remaining charge capacity of the battery.

4.4.7 Programs

- Tap on **Programs** to display a sub-menu of options.

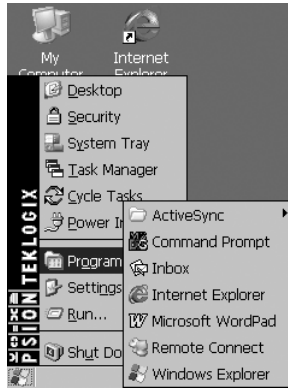


Figure 4.9 Program Sub-Menu

This sub-menu allows you to access to the following options:

ActiveSync®

This option allows you to connect to another device using ActiveSync.

Command Prompt

Command Prompt is used to access the DOS command prompt. At the prompt, you can type DOS commands such as *dir* to display all the directories in the drive.

Inbox

Inbox is used to access and view your email.

Internet Explorer

The WORKABOUT PRO is equipped with Microsoft® Internet Explorer consistent with all Windows CE .NET devices on the market. You can access the Internet Options icon through the Start Menu under Settings>Control Panel or by double-tapping on the desktop icon labelled My Computer and then, double-tapping on the Control Panel icon.

Microsoft Wordpad

This application, an abbreviated version of Microsoft Word, allows you to create documents using the WORKABOUT PRO.

Windows Explorer

Windows Explorer installed on your unit is consistent with all Windows CE .NET devices. You can access this option either from the Start Menu under Programs>Windows Explorer.

Remote Desktop Connection

Remote Desktop Connection is an application used to connect to a Windows Terminal Server so that you can run a “session” on the Server machine using the WORKABOUT PRO (Windows CE .NET device). “Remote Desktop Connection” on page 59 provides a website with details about this option.

4.4.8 Settings

Tapping on *Settings* displays a sub-menu of options, including Control Panel, Network and Dial-up Connections and Taskbar and Start Menu settings.



Figure 4.10 Settings Sub-Menu

Control Panel

The Control Panel contains applets used to configure hardware, the operating system and the shell. If your unit is running with the Psion Teklogix Open Tekterm application or another application, additional configuration applets may appear in the Control Panel.

Network And Dial-Up Connections

The Network and Dial-up Connections window allows you to configure the radio or execute an existing configuration. Refer to “Configuring An IEEE 802.11b Radio” on page 111 for radio setup details.

Taskbar And Start Menu

The Taskbar and Start Menu option displays a dialogue box in which you can customize the taskbar, choosing which options will be displayed. Refer to “Customizing The Taskbar” on page 46 for additional details about this option.

4.4.9 Run

Choosing the Run option from the Start Menu displays a dialogue box in which you can enter the name of the program, folder or document you want to open or launch.



Figure 4.11 Run Dialogue Box

4.4.10 Shutdown

With **Shut**down highlighted, pressing the <RIGHT> arrow key displays a sub-menu of options, including **Suspend**, **Warm Reset** and **Cold Reset**.



Figure 4.12 Shutdown Sub-Menu



Note: This menu varies slightly depending on the security level chosen. When the unit is set to **User** level, the **Shut**down option is replaced by **Su**spend. A sub-menu is not available.

At **Teklogix** security level, an additional option is available in the sub-menu – **B**ootloader. This option behaves like cold-reset, except that the **WORKABOUT PRO** starts Bootloader rather than Windows CE .NET

Suspend

The **Su**spend option suspends the **WORKABOUT PRO** immediately – this is equivalent to turning the hand-held off.

Warm Reset

The **W**arm Reset option resets the **WORKABOUT PRO**, leaving all saved files and (registry) settings intact. Any unsaved data is lost.

Cold Reset

The **C**old Reset option resets the **WORKABOUT PRO**. Any files not stored in permanent memory are lost. However, the registry settings are saved.

4.5 Using A Dialogue Box

A dialogue box (like the samples in Figure 4.13) appears when you need to make selections and enter further information.

You can move between dialogue items by tapping on them, or by pressing the arrow keys and the <TAB> key. (<SHIFT> <TAB> moves the cursor backwards.)

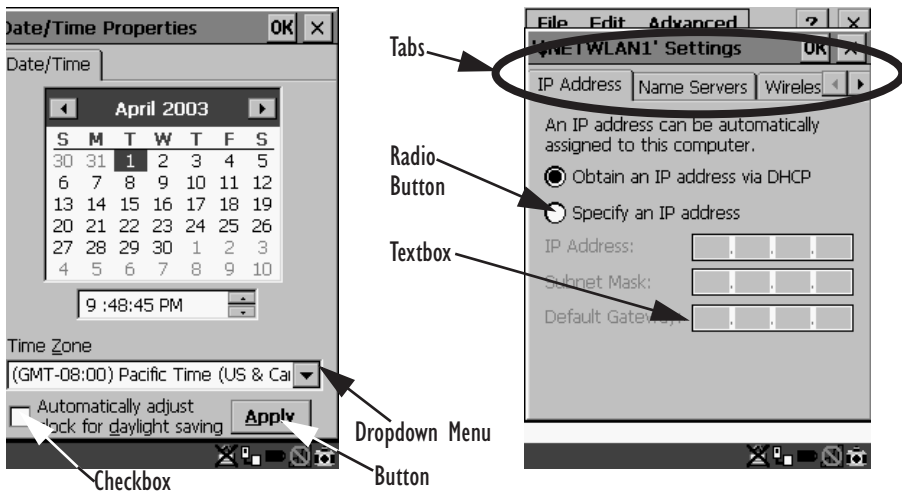


Figure 4.13 Dialogue Boxes

Dialogue boxes contain one or more of the following elements:

Tab: A tab separates different elements of a dialogue box. Tapping on a tab displays its contents.

Textbox: A textbox requires that you type information. Use the stylus to highlight the textbox and then type the appropriate information.

Dropdown: This type of menu is identified by up and down arrows next to the dropdown menu to indicate that additional options are available. Tap on the menu to highlight it, and use the arrows to cycle through the options.

Checkbox: This box allows you to select or deselect an option. To select or deselect a checkbox, tap the stylus in the checkbox to select (✓) or deselect it.

Radio buttons: These buttons allow you to choose from a number of options. For example, in the sample screen in Figure 4.13 on page 55 you can choose to 'Obtain an IP address via DHCP' or 'Specify an IP address'. Tap on a radio button to activate the option next to it.

Buttons: This type of button allows you to 'Save', 'Delete' and so on the options you've chosen in a dialogue box. Tap the stylus on the button you want to activate it.

Saving Your Choices: Once you've made all your changes, tap on the OK button or press the <ENTER> to save your changes and exit the dialogue box.



Note: *A dialogue box item that is displayed in grey text indicates that it is not currently available.*

CONFIGURATION

5

5.1 Remote Desktop Connection	59
5.2 Pocket PC Compatibility	59
5.3 The Control Panel	59
5.4 Control Panel Icons	60
5.5 Basic Setup	64
5.5.1 Display Properties	64
5.5.1.1 Display Contrast	64
5.5.1.2 Display Backlight	65
5.5.1.3 Display Appearance	66
5.5.2 Keyboard Properties	67
5.5.2.1 Key Repeat	67
5.5.2.2 Keyboard Backlight	68
5.5.2.3 Keyboard One Shot Modes	69
5.5.2.4 Keyboard Macro Keys	70
5.5.2.5 Unicode Mapping	71
5.5.3 Volume And Sound Properties	73
5.5.3.1 Volume Adjustments	73
5.5.4 Power Management Properties	74
5.5.4.1 Battery Capacity	74
5.5.4.2 Power Saving Schemes	75
5.5.5 Stylus Properties	76
5.5.5.1 Setting Double-Tap Sensitivity	76
5.5.5.2 Touchscreen Calibration	77
5.5.5.3 Touchscreen Options	77
5.5.6 Certificate Assignment	77
5.6 Bluetooth Setup	78
5.6.1 The Devices Tab	79
5.6.2 The Server Tab	82
5.6.3 The Property Tab	83
5.6.4 The Bluetooth GPRS Phone	84
5.7 SNMP (Simple Network Management Protocol) Setup	90

5.7.1	Contact Tab	91
5.7.2	Communities Tab	92
5.7.2.1	Adding A Community	93
5.7.2.2	Modifying A Community Setting	94
5.7.2.3	Removing An Existing Community	94
5.7.3	Trap Destination Tab	95
5.7.3.1	Enabling Authentication TRAPS.	95
5.7.3.2	Adding A Destination	95
5.7.3.3	Changing A Destination	96
5.7.3.4	Removing A Trap Destination	96
5.7.4	Permitted Hosts Tab.	97
5.7.4.1	Adding A Host	97
5.7.4.2	Changing A Host	98
5.8	Total Recall	98
5.8.1	Creating A Backup Profile	99
5.8.2	Restoring A Profile	102
5.9	APN Manager Settings	102
5.9.1	Automatic GSM Setup – Connecting To The Network	102
5.9.2	Manual GSM Setup – APN Settings Manager	103
5.9.3	PIN Settings	105

5.1 Remote Desktop Connection

Remote Desktop Connection is a WORKABOUT PRO application used to connect to a Windows Terminal Server so that you can run a “session” on the Server machine, using the hand-held (Windows CE .NET device).

Refer to the following website for step-by-step information about setting up this connection:

<http://www.microsoft.com/WindowsXP/pro/using/howto/gomobile/remotedesktop/default.asp>

5.2 Pocket PC Compatibility

The WORKABOUT PRO supports the AYGShell API set that allows PocketPC-compatible applications to run on the hand-held. Microsoft® Windows CE .NET 4.2 is designed to include application programming interface (API) compatibility support for the Microsoft Windows Powered Pocket PC 2002 shell in units running Windows CE .NET 4.2.

The website below describes the APIs exposed through AYGShell and the application compatibility between Windows Powered Pocket PC 2002-based applications and Windows CE .NET 4.2-based devices:

http://msdn.microsoft.com/library/default.asp?url=/library/en-us/dncenet/html/WINCENET_CEPC_App.asp

5.3 The Control Panel

The Control Panel provides a group of icons through which you can set a variety of system-wide properties, such as mouse sensitivity, network configuration and the desktop color scheme.



Note: *If you are uncertain how to move around a dialogue box and make selections, review “Using A Dialogue Box” on page 55.*

When the WORKABOUT PRO boots up, the startup desktop (shell) is displayed, and any applications stored in the Startup folder start up immediately.

To access the Control Panel:

- Use the stylus to tap on the **Start** button in the taskbar to display the **Start Menu**. Tap on **Settings > Control Panel**.

The Control Panel folder contains icons used in the setup of your WORKABOUT PRO.

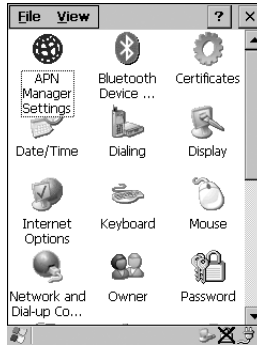


Figure 5.1 Control Panel

5.4 Control Panel Icons

The Control Panel provides a group of icons that allow you to customize and adjust settings on your WORKABOUT PRO.



APN
Manager
Settings

APN Manager Settings

Allows you to specify the APN (access point name) settings for units equipped with a GSM/GPRS card.



Date/Time

Date/Time

Allows you to set the current Month, Date, Time and Time Zone on the unit.



Display

Display

Changes the appearance (window colour scheme) on the unit desktop.



Keyboard

Keyboard

Toggles character repeat on and off and specifies delay and rate for repeated characters. It also allows you to adjust the keyboard backlight.



Volume & Sound

Volume &
Sounds

Allows you to adjust the volume of the sound emitted to indicate events like warnings, key clicks and screen taps. This option also allows you to tailor sounds (wave files) emitted from your WORKABOUT PRO.



Mouse Properties

Mouse

This icon allows you to customize the sensitivity and speed of the stylus double-tap.



Owner

Owner

Provides fields in which you can specify owner information. A 'Notes' tab allows additional information to be entered and displayed when the unit is powered up. 'Network ID' tab information is used to access network resources. (This information should be provided by your System Administrator.)



Password

Password

Allows you to assign a password to restrict access to elements of the unit. Once assigned, password access cannot be circumvented so it is important that you write down your password and keep it in a safe place. Refer to "Security Settings" on page 48 for details.



Power

Power

Displays battery pack power status. (Alternately, battery status can be accessed through the taskbar.) The 'Power Scheme' tab allows you to determine a suspend states, and the 'Charger' tab determines whether or not a battery that requires it, can be recalibrated. (Refer to "Power Saving Schemes" on page 75 for details.)



Regional Settings

Regional

Allows you to specify the local language the display text will use along with the format of numbers, currency, time and date for your region.

Control Panel Icons



Remove Programs

Remove

Lists the programs that can be removed from your unit. To remove a program, select it and then click on the **Remove** button.



Stylus

Stylus

Adjusts how Windows CE .NET recognizes your double-tap (as slow or rapid successive taps).

Under the 'Calibration' tab, you can recalibrate your touchscreen by tapping on the 'Recalibrate' button and following the directions on the calibration screen.



System

System

Displays system and memory properties. Under the **Memory** tab, you can allocate memory between storage memory and program memory.



Dialing

Dialing

Specifies dialing settings, including area code, country code, dial type and the code to disable call waiting. You can store multiple patterns – for example, 'Work', 'Home', and so on using this dialogue box.



Certificates

Certificates

A public key is transmitted as part of a certificate. The certificate assigned through this icon is used to ensure that the submitted public key is, in fact, the public key that belongs to the submitter. The client checks that the certificate has been digitally signed by a certification authority that the client explicitly trusts. "Certificate Assignment" on page 77 directs you to the appropriate setup information.



PC Connection

PC
Connection

Enables direct connections to a desktop computer. Selecting the 'Change Connection' button allows you to change the type of direct connect to your PC.



Teklogix
Scanners

Teklogix Scanners

If your WORKABOUT PRO is equipped with a scanner, this option provides the set up parameters and choose the bar code symbologies that the unit will successfully read.



Network and
Dial-up Co...

Network And Dial-up Connections

Displays a network window from which the radio can be configured and an existing configuration can be executed.



Internet
Options

Internet Options

Used to configure your Internet browser including options such as identifying the default and search page that the browser applies when connecting to the Internet, setting the cache size, specifying the Internet connection options, and defining the security level that is applied when browsing.



SNMP

SNMP

SNMP (Simple Network Management Protocol) is the protocol used to monitor and manage devices attached to a TCP/IP network.



Bluetooth
Device ...

Bluetooth

A short-range wireless technology that enables data communication between devices. It also provides the capability to use a Bluetooth-enabled cellular phone as a data modem, exchanging information with other Bluetooth devices and providing network access.



Total Recall

Total Recall

Total Recall is a Psion Teklogix utility developed to maintain the persistence of installed applications and settings over cold boots. This is based on a backup and restore concept and is extended to incorporate many advanced features.

5.5 Basic Setup

5.5.1 Display Properties

- In the Control Panel, choose the Display icon.

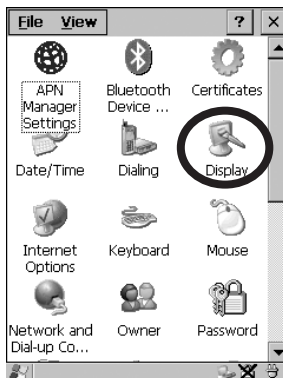


Figure 5.2 Choosing The Display Icon

5.5.1.1 Display Contrast

The Contrast tab allows you to adjust the display contrast to suit the environment in which you are using the hand-held. Keep in mind that contrast adjustments only affect monochrome displays.

- In the Display Properties dialogue box, open the Contrast tab.

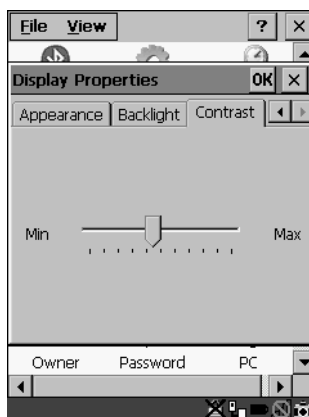


Figure 5.3 Display Contrast Properties

Sliding bar in the **Contrast** tab to the *left* decreases or *darkens* the display contrast. Sliding the bar to the *right* to increases or *lightens* the display contrast.

5.5.1.2 Display Backlight

The Display Properties dialogue box in the Control Panel allows you to specify the intensity of the backlight along with the duration of time it stays on after an event like a key press or scanner trigger.



Note: *Keep in mind that this option may be restricted to supervisory use only.*

- In the Display Properties dialogue box, open the Backlight tab.

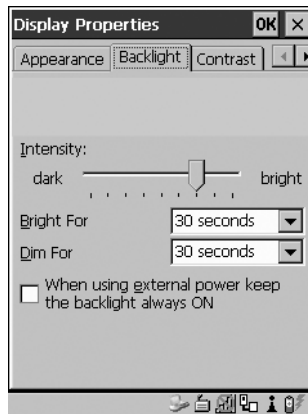


Figure 5.4 Display Backlight Properties



Note: *Backlight changes take affect immediately. You do not need to reset the WORKABOUT PRO.*

Intensity

This parameter is used to adjust the light intensity of the backlight. Sliding the bar to the left lowers the light intensity, and sliding it to the right raises the intensity.

Bright For

The value chosen from this dropdown menu determines the duration of time that the backlight stays on at the configured intensity when a unit is not in use.

Dim For

The value chosen from this dropdown menu determines the duration of time that the backlight stays on at half the configured intensity (dimmed backlight) when a unit is not in use.

External Power Checkbox

When you select (✓) the checkbox next to 'When using external power keep the backlight always ON.', the backlight remains ON at the configured intensity *when the WORKABOUT PRO is operating with external power* (not battery power). If power is being drawn from the battery, this option is ignored and the other parameters defined in Display Properties dialogue box take affect.

5.5.1.3 Display Appearance

- In the Display Properties dialogue box, open the Appearance tab.

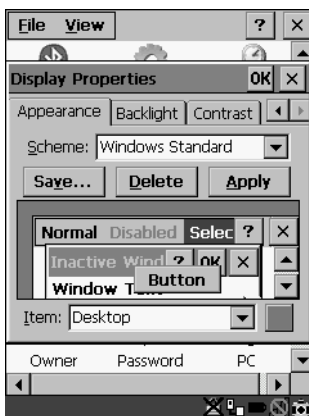


Figure 5.5 Display Appearance Properties

This dialogue box allows you to customize the display colour scheme.

5.5.2 Keyboard Properties

This icon displays the **Keyboard Properties** dialogue box in which you can adjust the repeat rate of the keys, the intensity of the keyboard backlight and the behaviour of the <BLUE> and <ORANGE> modifier keys. This dialogue box also allows you to define macro keys and Unicode characters.

- In the Control Panel, choose the **Keyboard** icon.

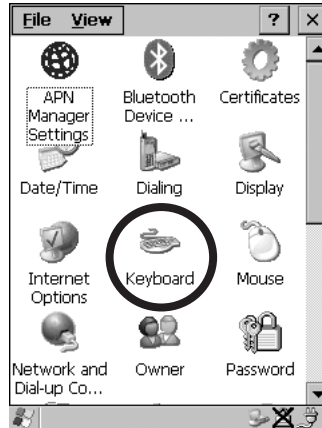


Figure 5.6 Choosing The Keyboard Icon

5.5.2.1 Key Repeat

- In the **Keyboard Properties** dialogue box, open the **Repeat** tab.

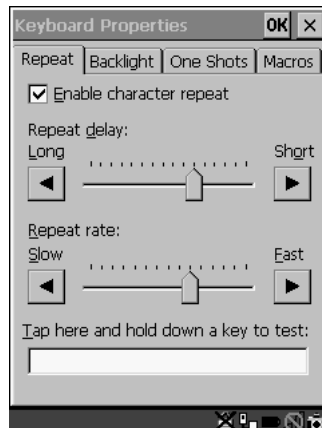


Figure 5.7 Key Repeat Properties

Repeat Delay

The value assigned for this parameter determines the delay in milliseconds between repeat characters. Sliding the **Repeat Delay** bar to the left increases the delay between key repeats while sliding the bar to the right shortens the repeat delay time.

Repeat Rate

The value assigned for the **Repeat Rate** parameter determines how quickly the key you press repeats and is measured in characters per second (cps). Sliding the bar to the left slows the repeat rate, and sliding the bar to the right increases the repeat rate.



Note: Use the field at the bottom of this dialogue box to test the repeat delay and rate settings you've chosen.

5.5.2.2 Keyboard Backlight

- In the Keyboard Properties dialogue box, open the Backlight tab.

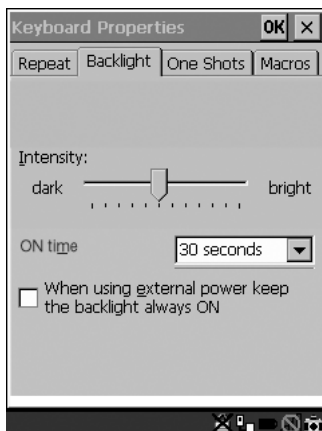


Figure 5.8 Keyboard Backlight Properties

Intensity

This parameter is used to adjust the light intensity of the keyboard backlight. Sliding the bar to the left darkens the keyboard backlight intensity, and sliding it to the right lightens the intensity.

ON Time

The value chosen from this dropdown menu determines the duration of time that the keyboard backlight stays on when a unit is not in use.

5.5.2.3 Keyboard One Shot Modes

- In the Keyboard Properties dialogue box, open the One Shots tab.

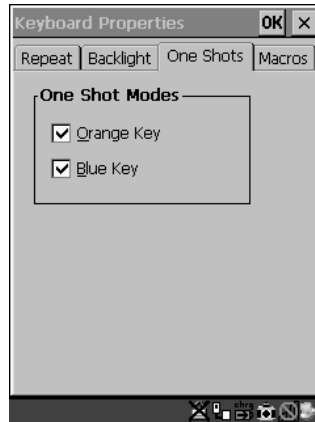


Figure 5.9 Keyboard One Shot Properties

When these options are enabled (✓), the <ORANGE> and <BLUE> keys only remain active until the next key is pressed. If the ‘One Shots’ options are disabled (the checkbox is left blank), the <ORANGE> and <BLUE> keys are locked ‘on’ when pressed only **once**; they remain ‘on’ until they are pressed a second time to unlock them.



Note: *Keep in mind that checking the taskbar lets you know whether or not these keys are locked on. When the <ORANGE> and <BLUE> keys are locked ‘on’, the taskbar at the bottom of the screen displays them in **uppercase** characters – ORANGE KEY and BLUE KEY. If these keys are displayed in **lowercase** characters in the taskbar, you’ll know that the orange key and the blue key are **not** locked. They will become inactive following a key press.*

5.5.2.4 Keyboard Macro Keys

- In the Keyboard Properties dialog box, open the Macros tab.

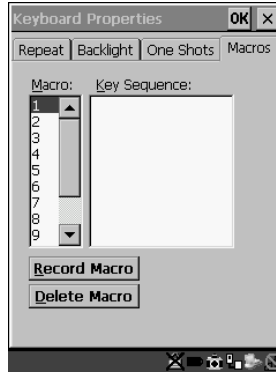


Figure 5.10 Macro Dialogue Box

A macro has 20 programmable characters (or “positions”). The macro keys can be programmed to replace frequently used keystrokes, along with the function of executable keys including <ENTER>, <BKSP> and (<BLUE>-<BKSP>), function keys and arrow keys.

Recording And Saving A Macro

You can program up to 3 macro keys.

- In the Macro: menu, highlight a macro key number – for example, macro 1 to assign a macro to macro key <M1>. Tap on the Record Macro button.

A message screen is displayed instructing you to ‘Please Enter Key Strokes’.



Figure 5.11 Recording A Macro

- Type the macro sequence you want to assign to the Macro key. You can type text and numbers, and you can program the function of special keys into a macro.
- When you've finished recording your macro sequence, press the key sequence – <CTRL> <ALT> <ENTER>.

A new screen displays the macro sequence you created. The **Save Macro** button is highlighted.

- Tap on **Save Macro** to save your macro.



Note: *If you want to discard the macro you've just created, tap on the **Discard Macro** button.*

Executing A Macro

- Press the macro key to which you've assigned the macro. For example, if you created a macro for macro key '1', press <M1> to execute the macro.

Deleting A Macro

- In the **Macros** tab, use the stylus to highlight the macro number you want to delete.
- Tap on the **Delete Macro** button, and press <ENTER>.

5.5.2.5 Unicode Mapping

- In the **Keyboard Properties** dialogue box, open the **Unicode Mapping** tab.

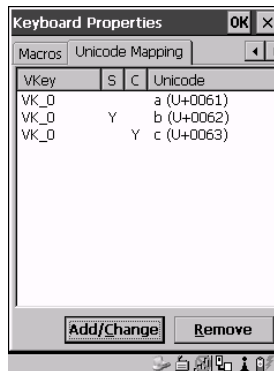


Figure 5.12 Unicode Mapping

Unicode Mapping

The **Unicode Mapping** tab is used to map combinations of virtual key values and <CTRL> and <SHIFT> states to Unicode™ values. This tab shows the configured Unicode character along with the Unicode value. For example, the sample screen above shows “a (U+0061)” indicating that the character “a” is represented by the Unicode value “0061”, and so on. Keep in mind that Unicode configurations are represented as hexadecimal rather than decimal values.

All user-defined Unicode mappings are listed in the **Unicode Mapping** tab in order of virtual key value, and then by order of the shift state. If a Unicode mapping is not listed, the Unicode mapping is mapped to the default Unicode value.

Adding And Changing Unicode Values

Important: *Changes to Unicode mappings are not saved until you exit the Keyboard Properties dialog box.*

- Tap on the Add/Change button.

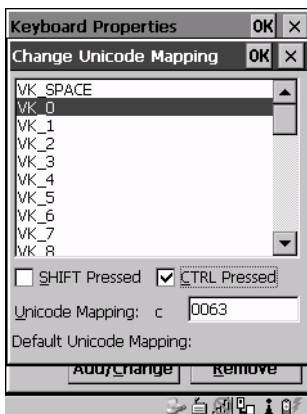


Figure 5.13 Adding And Change Unicode Values

- Highlight a value in the Unicode mapping list – in the sample screen above, a value will be assigned to virtual key 0 (VK 0).
- Position the cursor in the ‘Unicode Mapping’ field and type a Unicode value for the highlighted key.



Note: *To add a shifted state – <SHIFT> and/or <CTRL>, tap the stylus on the checkbox next to ‘SHIFT Pressed’ and/or ‘CTRL Pressed’.*

Removing Unicode Values

- In the 'Unicode Mapping' tab, highlight the item you want to delete, and tap the Remove button.

5.5.3 Volume And Sound Properties

- In the Control Panel, choose the Volume & Sounds icon.

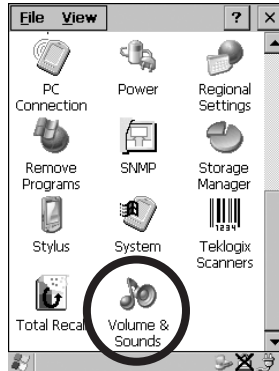


Figure 5.14 Choosing The Volume Icon

5.5.3.1 Volume Adjustments

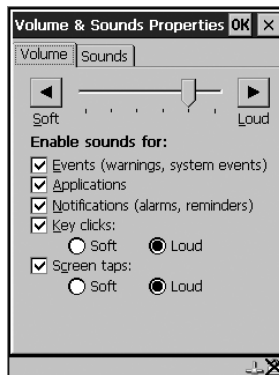


Figure 5.15 Volume Settings

- Slide the volume button to the left to lower the beeper volume or to the right to increase the beeper volume.
- Under the heading 'Enable sounds for:', enable (✓) the conditions under which you want the WORKABOUT PRO to emit a beep.

5.5.4 Power Management Properties

This icon displays a **Power Properties** dialogue box that indicates the unit's battery capacity and allows you to manage battery use.

- In the Control Panel, choose the **Power** icon.

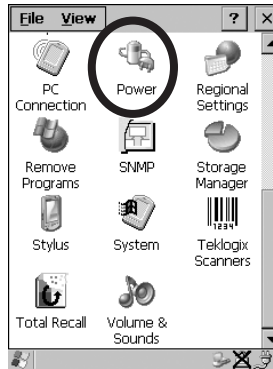


Figure 5.16 Choosing The Power Icon

5.5.4.1 Battery Capacity

- In the Power Properties dialogue box, open the **Battery** tab.

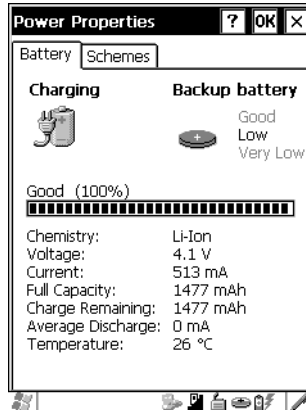


Figure 5.17 Power Battery Properties

The **Battery** tab details information about the battery installed in your **WORKABOUT PRO**.

5.5.4.2 Power Saving Schemes

- In the Power Properties dialogue box, open the Schemes tab.

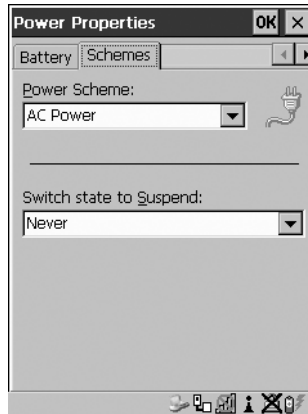


Figure 5.18 Power Scheme Properties

Power Scheme

This dropdown menu allows you to specify whether the unit is using AC Power or Battery Power.

Switch State To Suspend



Important: *If a WORKABOUT PRO is using battery power, Psion Teklogix recommends setting the Suspend value to 10 minutes. Setting ‘Switch State To Suspend’ to values greater than 10 or setting the suspend state to ‘Never’ will adversely affect the battery run time. To further reduce power consumption, carefully consider the duration of time that the display backlight is ‘on’ (see “Display Backlight” on page 65).*

When the WORKABOUT PRO is idle – not receiving any user input (a key touch, a scan, and so on) or system activity (serial data, an activity initiated by an application, and so on), the hand-held uses the value assigned in the Switch State To Suspend field to determine when the unit will go to sleep (appear to be off).

When the time in the Suspend field elapses without any activity, the unit enters Suspend state. In Suspend state, the WORKABOUT PRO CPU enters a *sleep* state, and any radios are shut off. The state of the device (RAM contents) is preserved. Pressing

<ENTER> wakes the system from suspend state. When the unit is in suspend state, the network connection will not be broken immediately. If the connection is dropped, you must re-establish the network connection.

5.5.5 Stylus Properties



Note: Touchscreen calibration may not be enabled on your unit. If your screen appears to require recalibration, contact your supervisor.

- In the Control Panel, choose the Stylus icon.

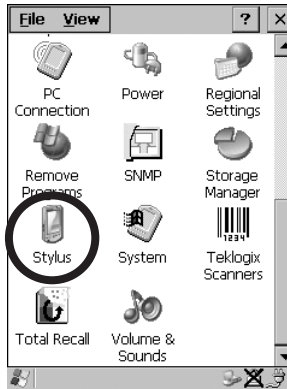


Figure 5.19 Stylus Icon

5.5.5.1 Setting Double-Tap Sensitivity

- In the Double-Tap tab, follow the directions to tailor the sensitivity of the stylus when you tap on the touchscreen.

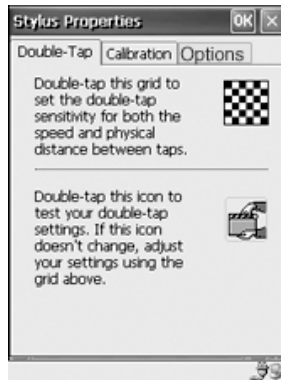


Figure 5.20 Setting Stylus Sensitivity

5.5.5.2 Touchscreen Calibration

Touchscreens rarely require recalibration. However, if your touchscreen has never been calibrated or if you find that the stylus pointer is not accurate when you tap on an item, follow the directions below.

- Choose the Calibration tab and then tap on the Recalibrate button.



Figure 5.21 Calibrating The Touchscreen

- Follow the directions in the Calibration tab to recalibrate the screen.

5.5.5.3 Touchscreen Options

This tab allows you to disable the touchscreen.

- Choose the Options tab and then tap on the 'Disable the touch panel' checkbox.

5.5.6 Certificate Assignment

- In the Control Panel, choose the Certificate icon.



Figure 5.22 Certificate Icon

The dialogue box is used in conjunction with 802.1x authentication to enhance security.



Figure 5.23 Certificates Dialogue Box

For a detailed description about Certificate setup for both the server and client-side devices (WORKABOUT PROs), refer to the following website:

www.microsoft.com/windows2000/techinfo/planning/walkthroughs/default.asp - "Security Services"



Note: When importing certificates, the unit only recognizes .cer files.

5.6 Bluetooth Setup

Bluetooth is a global standard for wireless connectivity for digital devices and is intended for Personal Area Networks (PAN). The technology is based on a short-range radio link that operates in the ISM band at 2.4 GHz. When two Bluetooth-equipped devices come within a 5 meter range of each other, they can establish a connection. Because Bluetooth utilizes a radio-based link, it does not require a line-of-sight connection in order to communicate.



Note: *The Bluetooth radio card uses an internal antenna.*

- In the Control Panel, choose the **Bluetooth Device Properties** icon to display the Bluetooth Manager screen.

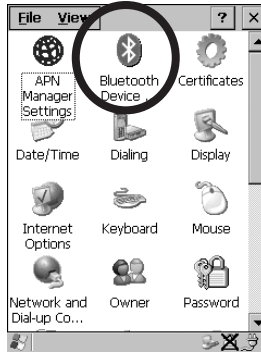


Figure 5.24 Bluetooth Icon

The **Bluetooth Controls** dialogue box is used to display the other Bluetooth devices with which you can communicate.



Figure 5.25 Bluetooth Devices Tab

5.6.1 The Devices Tab

Scan

- Click on the **<Scan>** button to list available devices.

The Devices Tab

Wait for the WORKABOUT PRO to complete its scan (approximately 20 seconds). When scanning starts, the <Scan> button will change to <Stop> – if necessary, you can tap on this button to stop the process. Once scanning is complete, all discovered devices will be displayed in the list box, with **Name**, **Address**, **Active** status, and **PIN** information.



Note: *During the scanning process, addresses are located first, followed by names. Therefore, only the names of devices that are within the Bluetooth radio coverage range will be retrieved.*

The **Active** column indicates whether any service is activated for that device. When a service is activated, the device is displayed in the list even when it is not detected during the scan.

The **PIN** column indicates whether you have a PIN (password) set for the device.

At this point you can either query for services or set the PIN for each device. Once you highlight a device in the list box, both the <Services> and <Set PIN> buttons become available.

Services

A discovered device may display several service profiles that it can use to communicate, and you will want to activate the type you need. Supported profiles that can be activated include: DUN (Dial-Up Networking service), Printer (serial service), and LANPPP (LANAccessUsingPPP service). ASync (ActiveSync) is another available profile.

- To start the service scan, highlight a device in the **Devices** tab list, and then click on the <Services> button or double-click on the device entry.



Note: *If the remote device is out of reach or turned off, it can take a considerable amount of time for the Services dialogue box to appear – it may appear to be frozen.*

Once the device's service profiles are displayed in the Services list box:

- Highlight the desired service, and then click on <Activate> or <Deactivate>, as required.

Once the service is successfully activated, the assigned port (if applicable) will appear in the **Port** column of the *Services* list box. You can choose to use **BSP** or **COM** as the port name. BSP is the latest Microsoft Bluetooth stack standard, but

older applications assume serial ports are COM. When using *COM* as the port name, the Bluetooth manager will try to find and use a free port between COM7 and COM9. When using *BSP* as the port name, BSP2 to BSP9 are available for use. The port is available as soon as it is activated.



Note: *The CH column shows the RFCOMM channel of the service IF the service is RFCOMM-based. This information is not generally needed except for debugging purposes.*

The **Authentication** and **Encryption** options can be changed only before activation. To change those after activation, deactivate the service first, then change the options.

Once a service is activated, all the information regarding the service, including the RFCOMM channel number, is saved in the registry. (Some remote devices may change their RFCOMM channel numbers when they reboot, so your saved setting may not work when the remote device is rebooted. In that case, you must deactivate the service and reactivate it to detect the current RFCOMM channel.)

Set PIN

PINs can be set for each device by pressing the <Set PIN> button in the Devices tab, or you can skip this step and try to connect to the device first.



Important: *The remote device must have authentication enabled, otherwise the PIN authentication will fail.*

- Highlight a device, click on the <Set Pin> button, and type the PIN.

You will receive a message, either that the PIN has been successfully validated or that it has been rejected.

If the PIN has been validated, an asterisk (*) appears in the PIN column in the *Devices* list box, indicating that this device has a PIN set. Once a PIN is entered, it is saved in the registry.

To remove the PIN:

- Click on <Set PIN> and press <ENTER>.

If the WORKABOUT PRO attempts to connect to a remote device that has Authentication enabled and does not have a required PIN set, an *Authentication Request* dialogue box appears.

- Enter the PIN, and click on <OK> to connect the devices.

5.6.2 The Server Tab



Figure 5.26 Bluetooth Servers Tab

The Bluetooth connection is initiated from your WORKABOUT PRO to the remote device – therefore the WORKABOUT PRO is called the ‘client’ and the remote is called the ‘server’. The Servers tab displays the server profiles that can be activated in your WORKABOUT PRO. There is currently one server profile available: **Serial**.

- Tap on the checkbox to activate (√) the server, and it will display the associated port name beside the server name.

Once you activate a server profile, it is recommended that the WORKABOUT PRO be rebooted before you try to bond from a server.



Note: *You do not need to reboot if you are deactivating a server.*

5.6.3 The Property Tab

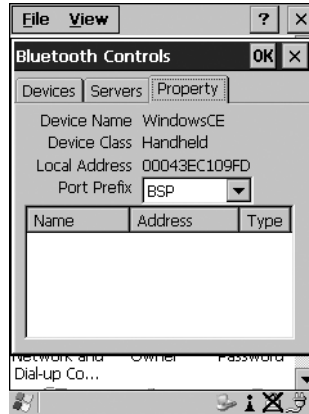


Figure 5.27 Bluetooth Servers Tab

The **Property** tab displays information about your WORKABOUT PRO, and provides some port options.

The **Device Name** field shows the device name of your WORKABOUT PRO. This name can be changed (see the *Note* in this section for details).

Device Class shows the Class of Device (e.g. desktop, hand-held), which is always set to **Handheld**.

Local Bluetooth Address shows the address of your WORKABOUT PRO radio.

Port Prefix is used to set the port name to either **BSP** or **COM**. When the name is set to **BSP**, BSP2 to BSP9 are available for activated services (including the server). When **COM** is chosen, COM7 to COM9 are available.

The **Connection list table** shows the *Name*, *Address*, and *Type* of the currently active connections. The table is periodically updated while on display, but it can take a few seconds before it reflects the actual list of connections. The *Type* column of the table shows 'ACL' or 'SCO'. The Connection list table shows the connections for scanning as well as the service connections.



Note: You can change the device-name and description of your radio by clicking on the **System** icon in Control Panel, which will open the System Properties dialogue box. Click on the **Device Name** tab to access the menu and change your settings. Then click on **OK**.

Although the name will have changed in the Property menu in Bluetooth Controls, the radio only reads it on boot-up. For the changes to take effect, you must reset the WORKABOUT PRO.

5.6.4 The Bluetooth GPRS Phone

Once you've completed the Bluetooth settings described beginning on page 78, you can go ahead and set up communication through your GPRS phone.

1. To set up the internet parameters, select the **Network And Dial-up Connections** icon from the Control Panel.

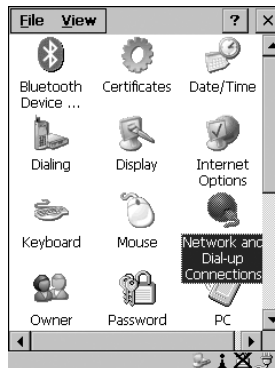


Figure 5.28 Network And Dial-up Connection Icon

2. Select the **Make New Connection** icon.

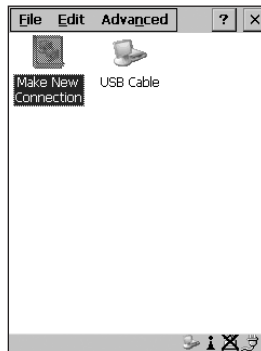


Figure 5.29 Creating A GPRS Connection

3. In the **Make New Connection** dialogue box, choose **Dial-Up Connection**. Enter a name for your GPRS network connection.

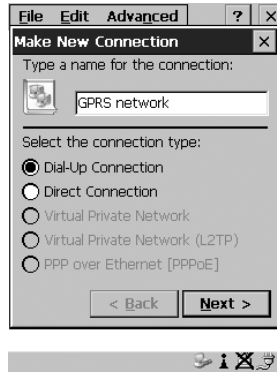


Figure 5.30 Setting Up The Connection

4. Highlight the **Next>** button, and press <ENTER> to display the **Modem** dialogue box.



Figure 5.31 Setting Up The Modem

5. In the dropdown menu labelled **Select a modem:**, choose the name of the modem with which you want to connect, and then choose the **Configure** button to display the **Device Properties** dialogue box.

The WORKABOUT PRO communicates with your phone and retrieves the parameters for the Device Properties dialogue box. The unit then disconnects.

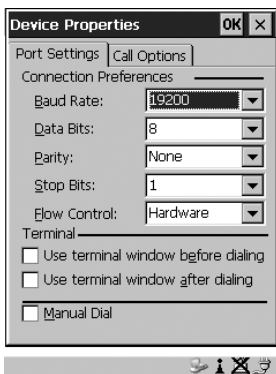


Figure 5.32 Port Settings

6. Under the Call Options tab, turn off Cancel the call if not connected within... and press <ENTER> to save your changes.

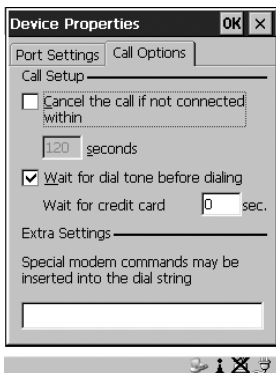


Figure 5.33 Call Options

7. In the Modem dialogue box, select the **Next>** button to display the Phone Number dialogue box.



Figure 5.34 Setting The Phone Number

The phone number you enter is network carrier dependent. Once you've specified all the necessary information, choose the **Finish** button.

8. In the Control Panel, choose the **Dialing** icon.

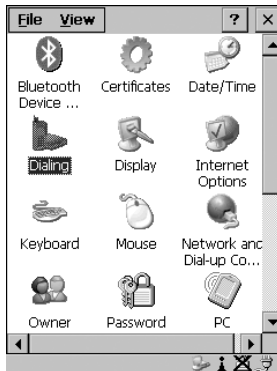


Figure 5.35 Dialing Icon

9. The values in the **Dialing Properties** dialogue box need to be edited according to your network carrier specifications.



Figure 5.36 Setting Up Dialing Properties

Once you've edited this dialogue box to reflect your network carrier requirements, press <ENTER> to save your changes.

10. At this point, you'll need to return to the **Control Panel** and select the **Network and Dial-up Connections** icon.
11. In the network connection window, the new network configuration – in this case – **GPRS Network** – is displayed. Choose the new icon.

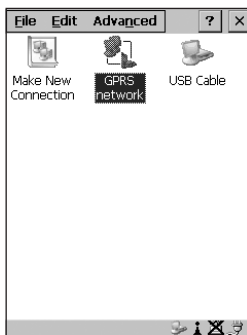


Figure 5.37 GPRS Network Connection

This onscreen message indicates the status of your connection – connected, disconnected, error messages, and so on.



Figure 5.38 Successful Connection

- Select the Hide button to move this message to the background.

You can now access the internet.

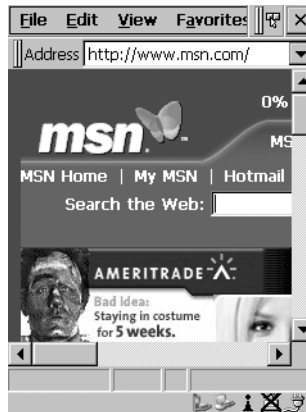


Figure 5.39 Accessing The Internet

5.7 SNMP (Simple Network Management Protocol) Setup

Simple Network Management Protocol (SNMP) is the protocol used to monitor and manage devices attached to a TCP/IP network (providing they support SNMP). SNMP uses Management Information Bases (MIBs) that define the variables an SNMP Network Management Station can access. Each product has a defined set of MIBs that determine how SNMP operates, the type of access allowed and so on.

All Teklogix products support the TEKLOGIX-GENERIC-MIB – a MIB that defines some common features across Teklogix products. All devices also support MIB-II, a management information base that defines the common features of TCP/IP networks. The SNMP Agent software embedded in the WORKABOUT PRO supports SNMPv1 (RFC 1157).

- In the Control Panel, choose the **SNMP** icon.



Figure 5.40 SNMP Icon

5.7.1 Contact Tab

The **SNMP** dialogue box is displayed.

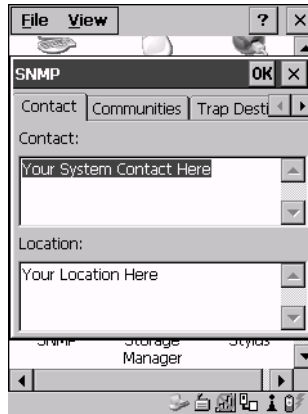


Figure 5.41 Contact Tab

Contact

This field identifies the contact person for this managed node along with information about how to get in touch with this person. The content of this parameter is accessible through MIB-II's `sysContact` object.

Location

This parameter is used to identify the physical location of this node (e.g., Warehouse A: Pillar 32B). The content of this parameter is accessible through MIB-II's `sysLocation` object.

5.7.2 Communities Tab



Figure 5.42 Community Settings

The “Communities” tab provides a means of limiting access to SNMP managed devices to those SNMP Managers with matching “community names”, as specified by RFC 1157.

Enable SNMP

Enabling (✓) ‘Enable SNMP’ allows the device to respond to SNMP queries and to send Traps. After enabling this option and rebooting the device, the SNMP Agent will automatically start up. To disable this feature, remove the check mark from the check box.

5.7.2.1 Adding A Community

- Choose the Add button to add a new ‘community’.

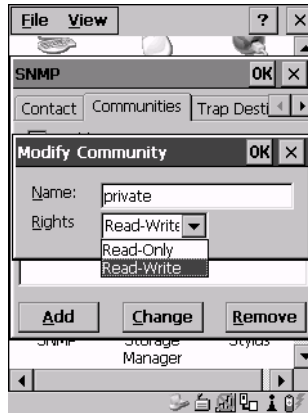


Figure 5.43 Adding A Community

Name

The value assigned here is the name assigned by the network administrator to the set of devices to which this managed node belongs.

Rights

This menu allows you to specify access – that is, ‘Read-Only’ or Read-Write’

5.7.2.2 Modifying A Community Setting

To modify an existing community:

- Highlight the community you want to alter.
- Tap the Change button.

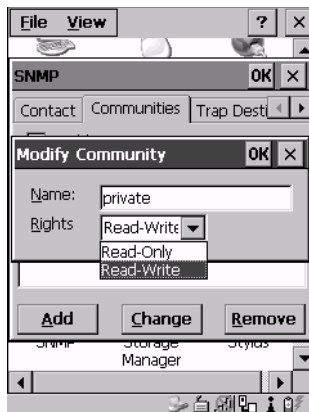


Figure 5.44 Changing Or Removing A Community

A **Modify Community** dialogue box is displayed, listing the community you highlighted.

- Edit the Name and/or Rights, and press <ENTER> to save your changes.

5.7.2.3 Removing An Existing Community

To remove an item:

- Highlight the community you want to remove in the **Communities** tab and then choose the Remove button.

A **Delete Confirmation** screen is displayed.

- To remove a community, tap the Yes button.
- If you decide not to remove the community, tap the No button.

5.7.3 Trap Destination Tab

A trap is an unsolicited report sent to SNMP Managers by the SNMP Agent running on the managed node. This option allows you to define where the report will be sent.



Figure 5.45 Trap Destination Tab

5.7.3.1 Enabling Authentication TRAPS

Enabling (✓) 'Enable Authentication TRAPS' allows authorization traps to be sent when a failure is detected (e.g., an SNMP message received with a bad community name).

5.7.3.2 Adding A Destination

To add a new destination:

- Tap on the Add button.

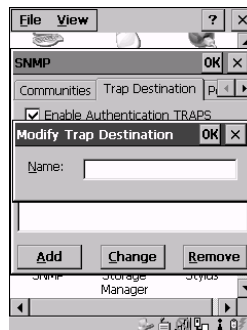


Figure 5.46 Adding A Trap Destination

- Type a destination in the text box provided, and press <ENTER>.

5.7.3.3 Changing A Destination

To change an existing trap destination:

- Highlight the destination you want to alter in the **Trap Destination** tab, and then tap on the **C**hange button.

A dialogue box like the one displayed when you *add* a destination is displayed.



Figure 5.47 Changing A Destination

- Make the changes to the destination, and press <ENTER> to save the changes.

5.7.3.4 Removing A Trap Destination

To remove a trap destination:

- In the **Trap Destination** tab, highlight the destination you want to delete.
- Tap on the **R**emove button.

A **Delete Confirmation** screen is displayed.

- To remove a destination, tap on the **Y**es button.
- If you decide not to remove the destination, tap on the **N**o button.

5.7.4 Permitted Hosts Tab

For security reasons, the Network Administrator may want to restrict SNMP-node access to a known sub-set of SNMP Managers. This tab lists the IP addresses of all the SNMP Managers which are allowed to monitor and manage this device. If no entries are listed, the device will accept SNMP queries from any host.

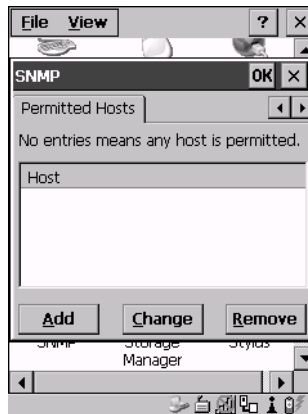


Figure 5.48 Permitted Hosts Tab

5.7.4.1 Adding A Host

To add a new host:

- Tap on the Add button.

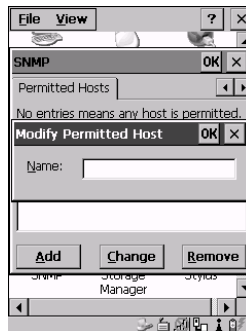


Figure 5.49 Adding A Host

- Type a new host IP address in the text box provided, and press <ENTER>.

5.7.4.2 Changing A Host

To change an existing host IP address:

- Highlight the IP address you want to alter in the **Permitted Hosts** tab, and then tap on the **Change** button.

A dialogue box like the one displayed when you *add* a host is displayed.

- Make the necessary changes, and press <ENTER>.

5.8 Total Recall

Total Recall is a Psion Teklogix utility developed to maintain applications and setting over cold boots. This utility is based on a backup and restore concept and is extended to incorporate power advanced features.

- In the **Control Panel**, choose the **Total Recall** icon.

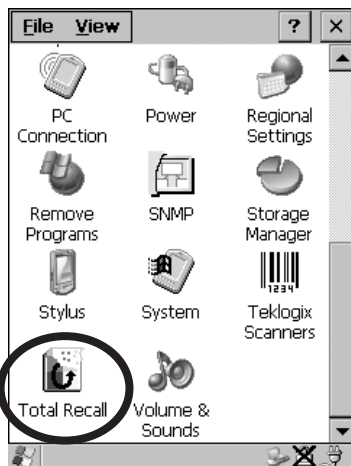


Figure 5.50 Total Recall Icon

5.8.1 Creating A Backup Profile

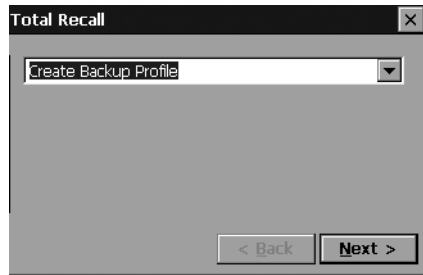


Figure 5.51 Backup Profile

In the dropdown menu, you can choose from four options: **Create Backup Profile**, **View Selected Profile**, **Restore Selected Profile** and **Delete Selected Profile**. Keep in mind however that until a profile is created, the only available option is **Create Backup Profile**.

- Tap on the <Next> button to begin the process.

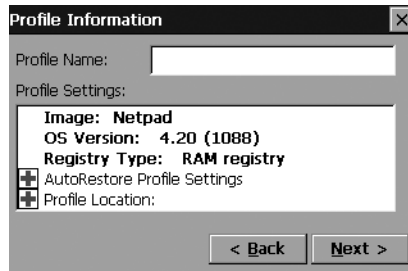


Figure 5.52 Profile Details

Profile Information

This dialogue box lists the possible storage destinations for the profile file.

- To begin, type a name for the profile in the field labelled **Profile Name**.

This dialogue box also lists the image type – OS Version and Registry Type for the WORKABOUT PRO.

- Tap on the **+** icon to expand your settings for AutoRestore Profile and Profile Location.

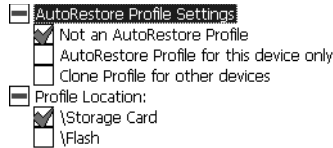


Figure 5.53 Profile Options

- **Not an AutoRestore Profile** – creates a backup that is manually restored by the operator.
 - **AutoRestore Profile for this device only** – creates a profile that automatically restores itself following a cold boot.
 - **Clone Profile for other devices** – creates a profile that automatically restores after resuming from a cold boot, but it will not contain the touch screen calibration coordinates or the Wireless radio settings.
 - **Profile Location** – allows the operator to specify where the profile is to be saved. The location for the profile will typically be Flash or a Storage card.
- Tap on the **<Next>** button to display the next dialogue box – **Add Files**.

Add Files

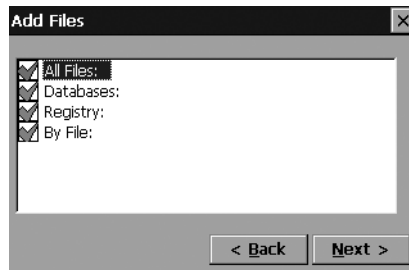


Figure 5.54 Adding Files

By default, **All Files:** is selected so that all installed or copied files, database entries, and the Registry will be saved. You can, however, limit the backup to database, and/or the registry only.

- Tap on the <Next> button to view your selections.

View Selections

Depending on what you have selected for inclusion in your profile, you can view a list of the selected files, databases, and/or registry.

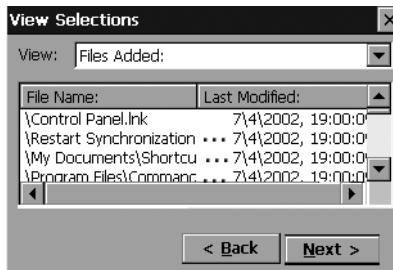


Figure 5.55 Viewing Selections

- Tap on the <Next> button to perform the operation.

Performing The Backup

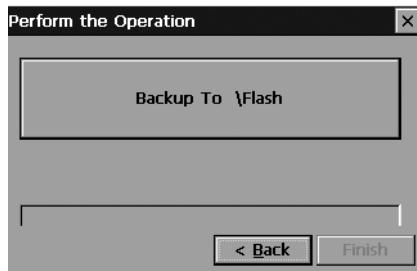


Figure 5.56 Performing The Backup

- Tap on Select the <Backup To \Flash> or <\Storage Card> button to start the process and create a profile.

5.8.2 Restoring A Profile

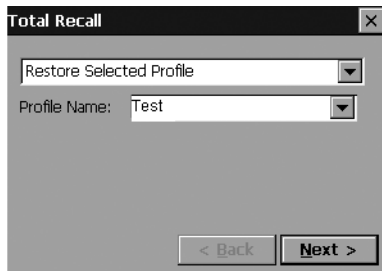


Figure 5.57 File Restoration

To manually restore a profile:

- Choose **Restore Selected Profile** from the dropdown menu, and select the **Profile Name** displayed in the drop down box.



Note: *You can also manually restore an auto restore profile located in flash or a storage device.*

5.9 APN Manager Settings

The APN Settings Manager icon in the Control Panel is used to set up APN (Access Point Name) settings for units equipped with GSM/GPRS radios.



Important: *Typically, APN setup information is automatically configured for you. The APN Manager Settings icon is only necessary if automatic setup fails.*

5.9.1 Automatic GSM Setup — Connecting To The Network

When you initially attempt to connect to a network using a GSM radio, a dialogue box is displayed asking if you would like your GSM automatically configured.

1. Choose **Yes** to initiate automatic configuration.
2. In the **Start Menu**, choose **Settings>Network...** and in the connection window, double-tap on the **GPRS** icon that has been set up for you.
3. In the **Dial-Up** dialogue box, tap on the **<Connect>** button.

PIN (Personal Identification Number) Request

The SIM (Subscriber Identity Module) card in your unit may be password protected. In this case, a dialogue box will appear, requesting that you enter your PIN (Personal Identification Number).

1. Type the PIN assigned to your unit SIM.
2. In the Start Menu, choose **Settings>Network...** and in the connection window, double-tap on the **GPRS** icon that has been set up for you.
3. In the Dial-Up dialogue box, tap on the **<Connect>** button.

5.9.2 Manual GSM Setup – APN Settings Manager



Note: Before using the APN Manager, close any active connections.

- In the Control Panel, choose the APN Manager Settings icon.



Figure 5.58 APN Manager Settings Icon

If automatic configuration has failed, you'll need to set up your details manually, using the APN (Access Point Name) settings tab.

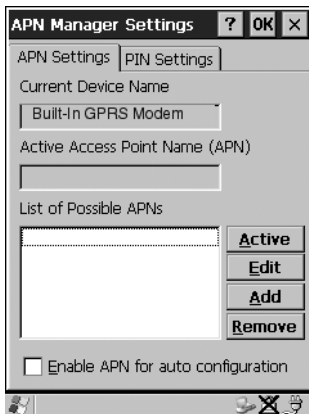


Figure 5.59 APN Settings Tab

- Tap on the <Add> button.

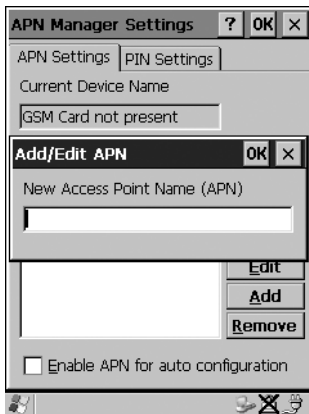


Figure 5.60 Adding A New APN

- In the Add/Edit APN dialogue box, type a new APN, and tap on <OK>.

Your new APN is added to the ‘List of Possible APNs’ under the APN Settings tab.

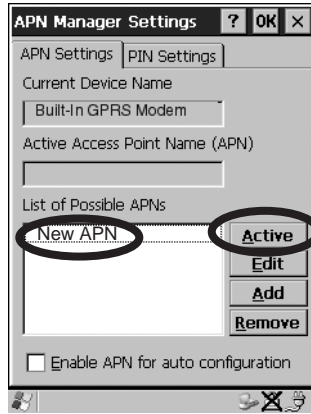


Figure 5.61 Adding A New APN

- To use your new APN, tap on the <Active> button.



Note: To avoid overwriting your newly created APN, disable the checkbox next to ‘Enable APN for auto configuration’.

5.9.3 PIN Settings

The Pin Settings tab is used to change, enable or disable the PIN (Personal Identification Number) assigned to your SIM card.

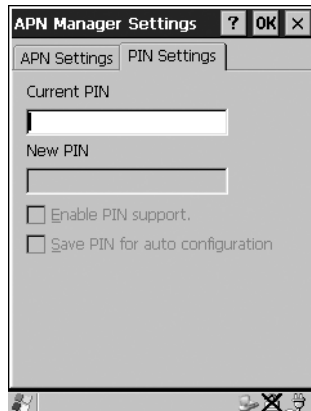


Figure 5.62 PIN Settings Tab

PIN Settings

To change your PIN:

- Type your existing PIN in the text box labelled **Current PIN**.
- Type the new PIN in the text box labelled **New PIN**.

Enabling (✓) **Enable PIN Support**. activates the PIN entry requirement – each time you connect to a network, your PIN will be requested. Leaving this checkbox unchecked disables PIN requirement.



Note: *Some SIM cards do not allow the PIN support to be disabled.*

Enabling (✓) **Save PIN for auto configuration**. causes the PIN to be stored in the hand-held. At power up, the PIN is automatically submitted to the modem.



Important: *Keep in mind that if the **WORKABOUT PRO** is starting from a ‘cold reboot’, the PIN is deleted. If unauthorized use of the hand-held is a serious issue at your site, Save PIN for auto configuration should be disabled.*