

# WORKABOUT PRO M/C

## Hand-Held Computer

### Quick Start Guide

March 11, 2004

PN 8000025.A



ISO 9001 Certified  
Quality Management System



© Copyright 2004 by Psion Teklogix Inc.,  
Mississauga, Ontario

This document and the information it contains is the property of Psion Teklogix Inc., is issued in strict confidence, and is not to be reproduced or copied, in whole or in part, except for the sole purpose of promoting the sale of Psion Teklogix manufactured goods and services. Furthermore, this document is not to be used as a basis for design, manufacture, or sub-contract, or in any manner detrimental to the interests of Psion Teklogix Inc.

*All trademarks are the property of their respective holders.*

## Return-To-Factory Warranty

Psion Teklogix warrants a return-to-factory warranty for a period of one year. In some regions, the warranty exceeds this period. Please contact your local Psion Teklogix office for details. For a list of offices, refer to “Support Services & Worldwide Offices” on page 29. The warranty on Psion Teklogix manufactured equipment does not extend to any product that has been tampered with, altered, or repaired by any person other than an employee of an authorized Psion Teklogix service organization. See Psion Teklogix terms and conditions of sale for full details.

## Service

When requesting service, please provide information concerning the nature of the failure and the manner in which the equipment was used when the failure occurred. Type, model, and serial number should also be provided. Before returning any products to Psion Teklogix, please call the Customer Services Group for a Return Authorization number.

## Support Services

Psion Teklogix provides a complete range of product support services to its customers. For detailed information, please refer to “Support Services & Worldwide Offices” on page 29.

## Disclaimer

Every effort has been made to make this material complete, accurate, and up-to-date. Psion Teklogix Inc. reserves the right to make changes without notice and shall not be responsible for any damages, including but not limited to consequential damages, caused by reliance on the material presented, including but not limited to typographical errors.

---

# Table Of Contents

1. Basic Preparation .....	3
1.1 Charging The Battery .....	3
1.2 Installing The Battery .....	3
1.3 Switching The Unit On. ....	4
1.4 Switching The Unit Off (Suspend).....	4
2. Getting To Know The WORKABOUT PRO .....	5
2.1 Features.....	5
2.2 The Battery .....	7
2.2.1 Battery Swap And Runtime .....	9
2.3 The Keyboard .....	9
2.3.1 Modifier Keys.....	10
2.3.2 The Keys.....	10
2.3.3 Adjusting The Keypad Backlight .....	12
2.4 The Display.....	12
2.4.1 Colour Display .....	13
2.4.2 Monochrome Display .....	14
2.4.3 Calibrating The Touchscreen .....	14
2.5 Indicators .....	15
2.5.1 The LED.....	15
2.5.2 Onscreen Indicators .....	16
2.5.3 Audio Indicators .....	18
3. Navigating In Windows CE.....	19
3.1 Navigating A Touchscreen .....	19
3.2 Navigating Using The Keyboard .....	19

3.3	The Startup Desktop . . . . .	20
3.3.1	Accessing Desktop Icons . . . . .	20
3.3.2	The Taskbar. . . . .	21
3.4	The Start Menu . . . . .	21
3.5	Using A Dialogue Box . . . . .	26
4.	General Maintenance. . . . .	28
4.1	Caring For The Touchscreen. . . . .	28
4.2	Cleaning The WORKABOUT PRO . . . . .	28
	Approvals . . . . .	33
	Safety Summary . . . . .	35
	Program License Agreements. . . . .	38

---

# 1. Basic Preparation

***Important:*** *All approval and safety information is outlined in the ‘WORKABOUT PRO Hand-Held Computer User Manual’ – part number 8000024. This manual is available on our web site [www.pSIONteklogix.com](http://www.pSIONteklogix.com) through the Teknet extranet. It is important that you review all safety guidelines before charging a battery or operating a scanner.*

This quick start guide provides basic information on the operation and features of the Psion Teklogix WORKABOUT PRO M (Monochrome) and WORKABOUT PRO C (Colour) Hand-Held Computer. For more detailed information, refer to the *WORKABOUT PRO M/C Hand-Held Computer User Manual (PN 8000024)* or the documentation supplied with the application you are using.

Typically, WORKABOUT PROs are configured at the factory and arrive ready for use.

## 1.1 Charging The Battery

Batteries shipped from the factory are not charged. They must be fully charged prior to use. Full capacity may not be reached until at least 5 full charge/discharge cycles have been performed.

## 1.2 Installing The Battery

- Turn the fasteners at the base of the battery cover counter-clockwise to unlock the cover and remove it. The top of the stylus is shaped to help you loosen the fasteners.
- Insert the *charged* battery. Replace the battery cover, and turn the fasteners at the base of the battery cover clockwise to lock the battery in place.

**Note:** *If you are using a docking station, you can insert an uncharged battery, dock the unit and switch it on.*

## 1.3 Switching The Unit On

- Press and hold down the <ENTER/ON> key for at least one second to switch the unit on.
- When the LED flashes green, release <ENTER/ON>.

A splash screen displaying the *Psion Teklogix* logo and the *Microsoft® Windows CE .NET* logo appears followed by the startup desktop.

**Note:** *If the unit was already in use – the unit may be off (suspend state) – pressing <ENTER/ON> ‘wakes’ the unit from this state. The screen in which you were working prior to the suspend state is displayed.*

## 1.4 Switching The Unit Off (Suspend)

- Press the <BLUE> key, and then press <ENTER/ON> to switch off the WORKABOUT PRO.

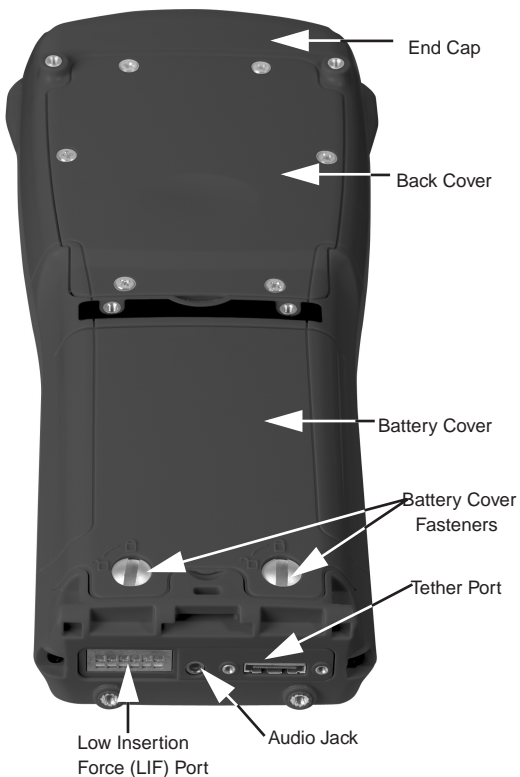


---

## 2. Getting To Know The WORKABOUT PRO

### 2.1 Features





## 2.2 The Battery

The WORKABOUT PRO will operate with a standard 1800 mAh Lithium Ion battery pack, a high-capacity 2700 mAh Lithium-Ion battery pack or three AA alkaline batteries. If you are using a Lithium Ion battery pack, the battery pack must first be charged.

**Warning:** *Before charging or using the battery pack, it is critical that the safety information in this section be reviewed and that all warnings are strictly followed.*

***BATTERIES ARE CONSIDERED HAZARDOUS WASTE. For proper disposal, forward all used batteries to one of:***

Psion Teklogix Inc.  
2100 Meadowvale Blvd.  
Mississauga, Ontario  
Canada  
L5N 7J9

Psion Teklogix Corp.  
1810 Airport Exchange Blvd.  
Suite 500  
Erlanger, Kentucky  
USA 41018

Psion Teklogix S.A.  
La Duranne; 135 Rue Rene Descartes; BP 421000  
13591 Aix-En-Provence  
Cedex 3; France

**Warning:** *TO PREVENT the battery from leaking acid, generating heat or exploding, adhere to precautions below.*

- The battery incorporates built-in safety devices. To ensure their proper function, do not disassemble or alter any parts of the battery.
- Do not short-circuit the battery by directly connecting any of the exposed terminals with metal objects such as wire. Do not transport or store the battery together with metal objects such as necklaces, hair pins, etc.
- Do not dispose of batteries in fire.

- Do not use or leave the battery near a heat source such as a fire or heater.
- Do not immerse the battery in water.
- When charging, use the battery charger specifically designed for the battery.
- Do not pierce, strike, throw or step on the battery.
- Do not directly solder the battery.
- Do not connect the battery to an electrical outlet, vehicle cigarette lighter, etc.
- Do not put battery into a microwave oven or pressurized container.
- Do not use the battery in combination with primary batteries (such as dry-cell batteries) or batteries of different capacities or brands.
- Immediately remove the battery from the device or battery charger and stop use if the battery gives off an odour, generates heat, becomes discoloured or deformed, or in any way appears abnormal during use.
- Do not continue charging the battery if it does not recharge within the specified charge time.
- The battery may burst or ignite if the battery leaks. Always ensure that it is away from any exposed flames.
- If leaking electrolyte sprays into your eyes, rinse them with clean running water, and immediately seek medical attention.
- Do not store the battery in extremely high temperatures (e.g., a vehicle, strong direct sunlight, etc.). This may cause the battery to overheat or ignite, and it may also reduce the performance and service life of the battery.
- Do not use in areas where static electricity is greater than what the manufacturer guarantees.
- Keep batteries out of reach of children.



## 2.3.1 Modifier Keys

The <SHIFT>, <CTRL>, <ALT>, <ORANGE> and <BLUE> keys are *modifier* keys. Pressing a modifier key changes the function of the next key pressed. For example, a square bracket is printed in *orange* print above the <4> key. Pressing the <ORANGE> key followed by the <4> key displays a square bracket rather than the number 4.

The <SHIFT>, <CTRL> and <ALT> keys operate much like a desktop keyboard except that they are not chorded – two keys cannot be held down simultaneously. The modifier key must be pressed first followed by the key whose function you want modified.

### Activating Modifier Keys

When a modifier key is pressed once, the modifier key icon displays the key in *lowercase* letters in the taskbar. For example, pressing <CTRL> once displays *ctrl* key in the taskbar. Once the next key is pressed, the modifier key becomes inactive and disappears from the taskbar.

### Locking Modifier Keys

When a modifier key is pressed twice, it is ‘locked’ on. A ‘locked’ modifier key icon displays the key in *uppercase* letters in the taskbar. For example, pressing the <BLUE> key twice locks it on – it is displayed as **BLUE KEY** in the taskbar at the bottom of the screen.

The locked modifier key remains active until it is pressed a third time to unlock or turn it off.

## 2.3.2 The Keys

### The <SHIFT> Key

Used to display uppercase alpha characters and provide access to the symbols above the numeric keys.

## The Arrow Keys

Contained in the round disk-shaped key at the top of the keyboard.  
Moves the cursor around the screen – up, down, left and right.

## The <BKSP/DEL> Key

Moves the cursor one character to the left, erasing the incorrectly entered key stroke.

<DEL> key (<BLUE> <BKSP>) erases the character at the cursor position.

## The <CTRL> And <ALT> Key

Modify the function of the next key pressed and are application dependent.

## The <TAB> Key

Usually moves the cursor to the next field to the right or downward. Pressing <ORANGE> <TAB> move the cursor backward.

## The <ESC> Key

Generally used as a keyboard shortcut to close the current menu, dialogue box or activity and return to the previous one.

## The <SPACE> Key

Inserts a blank space between characters. In a Windows dialogue box, the <SPACE> key enables (✓) or disables a checkbox.

## The <SCAN> Keys

Activate the scanner beam while pressed. For units without internal scanners, these keys are inoperable.

## The Function Keys – <F1> to <F10>

Perform special, custom-defined functions. These keys are accessed by pressing <BLUE> followed by numeric keys <1> to <10>. They can be used with the Windows CE .NET operating system or another application.

## The Macro Keys – <M1> to <M3>

Contain up to 20 programmable characters (“positions”) and executable keys. These keys are accessed by pressing <ORANGE> followed by alpha keys <O>, <P> or <Q>. When pressed, the macro key executes a custom-defined string of characters, including executable keys.

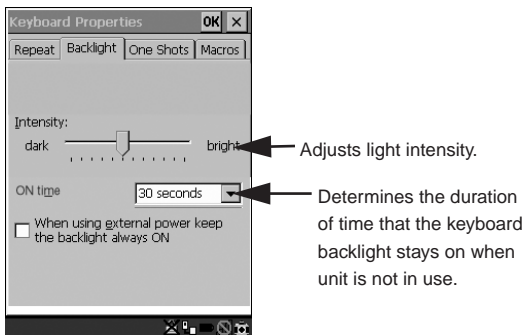
### 2.3.3 Adjusting The Keypad Backlight

To adjust the intensity of the keypad backlight and the conditions under which this backlight is activated

- In the Control Panel, choose the Keyboard icon.

**Note:** Access may be restricted to supervisory use.

- In the Keyboard Properties dialogue box, open the Backlight tab.



## 2.4 The Display

Depending on the type of display – colour or monochrome – you can adjust the backlight or contrast of the display to improve character visibility.



## 2.4.1 Colour Display

### Adjusting The Backlight

The display backlight can be adjusted manually.

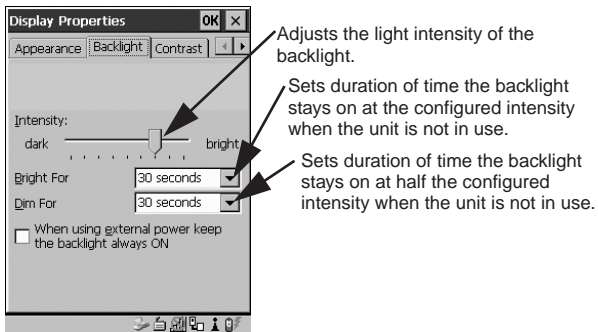
- Press the Backlight key <☀> to cycle through from light to darkest, and then back to lightest. Press <ORANGE> <☀> to cycle backward from darker to lighter.

To set the range of the backlight:

- Choose the Display icon in the Control Panel.
- Display the Backlight tab.

**Note:** For units equipped with monochrome screens, the Backlight key <☀> turns the backlight on or off. Backlight intensity cannot be adjusted.

*Note also that adjustments may be restricted to supervisory use only.*



## 2.4.2 Monochrome Display

### Adjusting The Contrast

**Note:** Contrast adjustment is only available on hand-helds equipped with monochrome screens. Contrast has no effect on units with colour screens.

The display contrast can be adjusted from the keyboard using the Contrast key <◐◑> just below the arrow keys.

- Press this key until you are satisfied with the contrast adjustment. Press <ORANGE> <◐◑> to shift contrast backward.

To set the range of the contrast on a monochrome screen:

- In the Control Panel, choose the Display icon and select the Contrast tab.

**Note:** Keep in mind that this option may be restricted to supervisory use only.



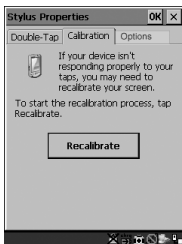
Adjusts the display contrast.

## 2.4.3 Calibrating The Touchscreen

**Note:** This function may be restricted to supervisory use.

If the touchscreen has never been calibrated or if the stylus pointer is not accurate when you tap on an item:

- In the Control Panel, choose the Stylus icon, select the Calibration tab, and then tap on the <Recalibrate> button.



- Follow the onscreen directions to calibrate the display.

## 2.5 Indicators

WORKABOUT PROs use an LED (Light Emitting Diode), onscreen messages and audio tones as indicators.

### 2.5.1 The LED

A single, two-coloured LED is located on the left side of the unit, just above the <BKSP> key. When you press <ENTER/ON>, the LED flashes green to indicate that the unit has been powered up. The LED table below outlines the behaviour of the LED while the unit is docked in a charger.

Keep in mind that the application running on the WORKABOUT PRO can dictate how the LED operates. Review the documentation provided with the application to determine LED behaviour.

LED Behaviour	Indication
Solid Green	Battery charge complete.
Solid red	Charge in progress.
Blinking red	Alarm.

## 2.5.2 Onscreen Indicators

The taskbar at the bottom of the screen displays a variety of system status indicators.



The taskbar changes dynamically, and only those icons that are applicable are displayed. For example, if a Bluetooth radio is not installed, this icon is not displayed in the taskbar. Double-tapping on an icon displays the associated dialogue box.

### Windows® Start Button

You can display the Start Menu by tapping on the Windows® Start button in the taskbar.



## Modifier Key Indicators

<SHIFT>, <CTRL>, <ALT>, <BLUE> and <ORANGE> are modifier keys that have onscreen indicators to show when a key is active or locked. If a modifier key is pressed once to activate it, the key is displayed in the taskbar in *lowercase* characters. If a modifier key is pressed twice, it is 'locked on' and the onscreen indicator is displayed in *uppercase* letters in the taskbar.

blue  
key      BLUE  
KEY

## Battery Gauge

Battery icons are a visual indication of the remaining battery power. If the unit is using external AC power, an AC icon is displayed.



Full



75%



50%



25%



Empty



AC Connection

## Battery Charge

The battery charge icon is displayed in the taskbar when the handheld battery is being charged.



## LIF and USB Devices

When a device such as a docking station or a charger is connected to the USB (tether) port or the LIF (Low Insertion Force) port and is activated, an associated icon appears in the taskbar.



New device connected: LIF Port



New device connected: USB Port

## Security Level

Security levels can be set to limit access and prevent inadvertent changes to application settings.



## Bluetooth Radio

If a Bluetooth radio is installed, this icon is displayed in the taskbar.





## 2.5.3 Audio Indicators

The audio speaker provides a variety of sounds and can be configured to emit a sound under various conditions. Refer to ‘Volume Adjustment’ in the ‘*WORKABOUT PRO Hand-Held Computer User Manual*’ for details.



**Note:** *The volume can also be adjusted using the Volume & Sound Properties dialog box in the Control Panel.*

## Adjusting The Speaker Volume

The volume keys are located above the <A> and <B> keys and are used to adjust the volume emitted from your unit.

The *increase volume* key is labelled with a plus symbol  and the *decrease volume* key is labelled with a minus sign .

To adjust the speaker volume:

- Press the <BLUE> key twice to lock it ‘on’.
- Press the *increase volume* <A> key  or the *decrease volume* <B> key  until the volume meets your needs.
- Press the <BLUE> key again to ‘unlock’ it.

---

## 3. Navigating In Windows CE

On WORKABOUT PROs, the ‘point and click’ action associated with a desktop computer mouse is accomplished by tapping a stylus on the touchscreen. In addition, every ‘point and click’ action, an equivalent keyboard shortcut is also available.

### 3.1 Navigating A Touchscreen

All WORKABOUT PROs are equipped with a touchscreen and a stylus.

To prevent damage to the touchscreen, use only the stylus provided – **never** use a screw driver or other sharp objects.

To open a file, launch an applet or open a folder:

- Tap the stylus on the appropriate icon.

**Note:** *If the touchscreen is not registering your screen taps accurately, it may need recalibration. Refer to “Calibrating The Touchscreen” on page 14.*

### 3.2 Navigating Using The Keyboard

You can also use the keyboard to choose icons and navigate dialogue boxes, display the desktop, and so on.

Unlike a desktop computer, the WORKABOUT PRO does not support key chording (pressing two keys at the same time). You must press one key followed by the next in sequence.

Operation	Key or Key Combination
Switch between applications	<ALT> <TAB>
Open task manager screen	<ALT> <ESC>
Move cursor	Arrow keys

Open file, folder or icon	<ENTER>
Exit & Save	<ENTER>
Close/Exit & Do Not Save	<ESC>
Navigate Dialogue Boxes	Next field: <TAB> Move cursor up: <SHIFT><TAB> Display next tab : <CTRL> <TAB>
Select Radio Button/ Press Button	<SPACE>
Go to Start Menu	<BLUE><. >

## 3.3 The Startup Desktop

When the unit boots up, the startup desktop is displayed. Applications stored in the Startup folder start up immediately. The Startup folder is located in: `\Windows\Startup and \Flash Disk\Startup`.



### 3.3.1 Accessing Desktop Icons

- Double-tap on the icon to open a window or, in the case of an application icon, launch an application.



### 3.3.2 The Taskbar



A taskbar at the bottom of the screen displays icons through which you can view the security level and battery capacity. A unit equipped with a Bluetooth radio displays the appropriate icon in the taskbar. A hand-held attached to a charger, cradle or docking station displays the associated icon, and so on.

The taskbar also displays active modifier keys – <SHIFT>, <ALT>, <CTRL>, <ORANGE> and <BLUE>. Keys that have been locked “on” are displayed in *uppercase* letters.

#### Using The Taskbar

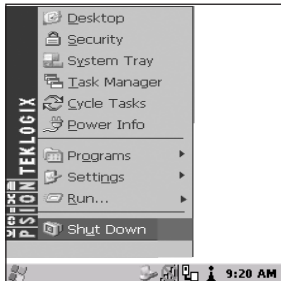
- Tap on an icon to display the associated dialogue box. For example, tapping on the battery icon displays the Power Properties dialogue box that indicates the current battery capacity.

### 3.4 The Start Menu

The Start Menu lists operations you can access and work with. It is available from the startup desktop or from within any application.

To display the menu:

- Tap on the Windows® Start button in the taskbar. Tap on the item in the menu with which you want to work.



**Note:** If your touchscreen is disabled, press <BLUE> <.>.

## The Desktop

Choosing Desktop from the Start Menu displays the desktop.

## Security Settings

To assign a security level:

- Choose Security from the Start Menu.



- Select a security level from the dialogue box, and type the appropriate password.

To change the password:

**Note:** Keep in mind that this is the same password as that assigned through the Password control panel applet.

- Choose a security level, and enter the existing password in the Password field.
- Choose the Set Password button.

In the Password Properties dialogue box:

- Type the new password in the Password: text box, and retype the new password in the Confirm Password: text box.

## The System Tray

**Note:** *You'll only need to use this option to access the icons in the taskbar if your touchscreen has been disabled. If your touchscreen is working, you can tap on the taskbar icons to display associated dialogue boxes.*

The System Tray option allows keyboard access to the icons in the taskbar at the bottom of the screen. The taskbar displays indicators such as a battery capacity gauge and the security level. These indicators are attached to dialogue boxes that provide additional information.

- Choose System Tray from the Start Menu.

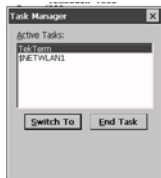
When System Tray is chosen, the taskbar icons become accessible. To display the dialogue box attached to an icon:

- Use the <LEFT> and <RIGHT> arrow keys to highlight the icon with which you want to work.
- Press <ENTER/ON> to display the associated dialogue box.

## The Task Manager

The Task Manager option allows you to switch to another task or to end an active task. To display the task manager window:

- Tap on Task Manager in the Start Menu.



## Cycle Tasks

When Cycle Tasks is selected (and the Task Manager is not open), you can cycle through active applications. To cycle to the next active task:

- Tap on Cycle Tasks in the Start Menu.

## Power Info

Selecting Power Info from the Start Menu displays the Power Properties dialogue box. This dialogue box indicates the remaining charge capacity of the battery.

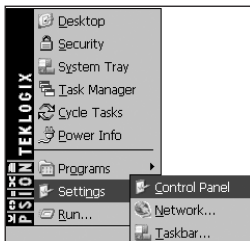
## Programs

Program displays a sub-menu of options with which you can work access applications.



## Settings

Tapping on **S**ettings displays a sub-menu of options with which you can access the Control Panel applets, configure your radio (Network and Dial-up Connections) and customize the Taskbar and Start Menu.



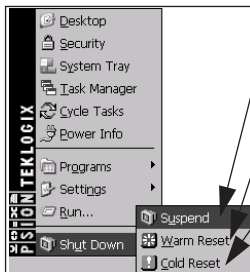
## Run

Choosing the **R**un option displays a dialogue box in which you can enter the name of the program, folder or document you want to open.



## Shutdown

Tapping on **Shut**down displays options for a shutdown.



Suspends the unit immediately – equivalent to turning the unit off.

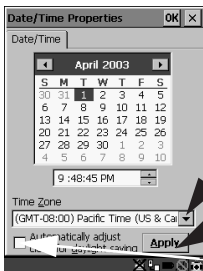
Resets the unit, leaving all saved files and (registry) settings intact. Unsaved data is lost.

Resets the unit. Files stored outside of permanent memory are lost.

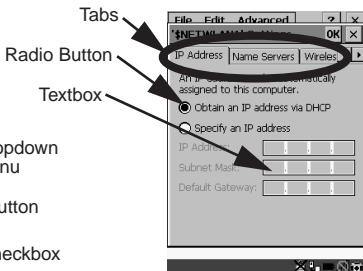
**Note:** This menu varies depending on the security level. At **User** level, the Shutdown sub-menu is replaced with a single option – Suspend. A sub-menu is not available.

**Teklogix** security level provides another option – Bootloader. This option behaves like cold-reset, except that the unit launches Bootloader rather than Windows CE .NET.

## 3.5 Using A Dialogue Box



Dropdown Menu  
Button  
Checkbox



Tabs

Radio Button

Textbox

**Note:** Tap the stylus on a dialogue box element to select or deselect it, display a dropdown menu and so on. To use the keyboard, refer to “Navigating Using The Keyboard” on page 19.

Dialogue boxes like the samples in this section contain one or more of the following elements:

**Tab:** Tabs separate different elements of a dialogue box. Tap the stylus on the tab with which you want to work.

**Textbox:** A textbox requires that you type information. Tap on the textbox you want to work with to highlight it, and then type the appropriate information.

**Dropdown:** This type of menu is identified by up and down arrows next to the dropdown menu to indicate that additional options are available. Tap on the menu to highlight it, and tap on the arrows attached to the menu to cycle through the options.

**Checkbox:** This box allows you to select or deselect an option. To select (✓) or deselect a checkbox, tap the stylus in the checkbox.

**Radio buttons:** These buttons allow you to choose from a number of options. For example, in the sample screen under section 3.5 on page 26, you can choose to ‘Obtain an IP address via DHCP’ or ‘Specify an IP address’. Tap on a radio button to activate the option next to it.

**Buttons:** This type of button allows you to ‘Save’, ‘Delete’ and so on the options you’ve chosen in a dialogue box. Tap on the button you want to execute.

**Saving Your Choices:** Once you’ve made all your changes, tap on the <OK> button to save your changes and exit the window.

**Note:** If an item in a dialogue box is displayed in grey text, the item is not currently available.

---

## 4. General Maintenance

### 4.1 Caring For The Touchscreen

The touchscreen can be permanently damaged by harsh chemicals and is susceptible to abrasions and scratches. Using sharp objects on the touchscreen can scratch or cut the plastic or crack the internal conductive coating.

Protect the touchscreen from the following chemicals:

- mustard,
- sodium hydroxide,
- concentrated caustic solutions,
- benzyl alcohol, and
- concentrated miner acids.

If touchscreens are used in harsh environments, apply disposable screen protectors to dramatically extend the life of the touchscreen.

### 4.2 Cleaning The WORKABOUT PRO

***Important: Do not immerse the unit in water. Dampen a soft cloth with mild detergent to wipe the unit clean.***

- Use ***only*** mild detergent or soapy water to clean the unit.
- Avoid abrasive cleaners, solvents or strong chemicals. The plastic case is susceptible to harsh chemicals. The plastic is partially soluble in oils, mineral spirits and gasoline. The plastic slowly decomposes in strong alkaline solutions.
- To clean ink marks from the keypad and touchscreen, use isopropyl alcohol.



---

## 5. Support Services & Worldwide Offices

Psion Teklogix provides a complete range of product support services to its customers worldwide.

### 5.1 Technical Support

Technical Support for Mobile Computing Products is provided via e-mail through the Psion Teklogix customer and partner extranets. To reach the website, go to [www.pSIONteklogix.com](http://www.pSIONteklogix.com) and click on the appropriate Teknet link on the home page. Then click on the “Log-in” button or the “Register” button, depending on whether you have previously registered for Teknet. Once you have logged in, search for the “Support Request Form”.

### 5.2 Product Repairs

#### *International*

For product repairs, please contact your local Psion Teklogix office (see “Worldwide Offices” on page 30).

#### *Canada/U.S.A*

Canadian and U.S. customers can receive access to repair services, by calling the toll-free number below, or via our secure website (see *Technical Support*, above).

**Note:** *Customers calling the toll-free number should have their Psion Teklogix customer number or trouble ticket number available.*

Voice: 1 800 387-8898 (press option “2”)

Fax: 1 905 812-6304

## 5.3 Worldwide Offices

### **COMPANY HEADQUARTERS AND CANADIAN SERVICE CENTRE**

#### **Psion Teklogix Inc.**

2100 Meadowvale Blvd.

Mississauga, Ontario

Canada L5N 7J9

Tel: +1 905 813 9900

Fax: +1 905 812 6300

E-mail: salescdn@psion.com

### **NORTH AMERICAN HEADQUARTERS AND U.S. SERVICE CENTRE**

#### **Psion Teklogix Corp.**

1810 Airport Exchange Boulevard

Suite 500

Erlanger, Kentucky

USA 41018

Tel: +1 859 371 6006

Fax: +1 859 371 6422

E-mail: salesusa@psion.com

### **INTERNATIONAL SUBSIDIARIES**

#### **Psion Teklogix GmbH**

Jakob Kaiser Straße 3

D-47877 Willich Münchheide

Deutschland

Tel: +49 2154 9282 0

Fax: +49 2154 9282 59

E-mail: info@teklogix.de

#### **Psion Teklogix S.A.**

La Duranne

135 Rue Rene Descartes

BP 421000

13591 Aix-En-Provence

Cedex 3; France

Tel: +33 4 42 90 88 09

Fax: +33 4 42 90 88 88

E-mail: tekeuro@psion.com

#### **Psion Teklogix Danmark**

Vesterballevej 4-6

7000 Fredericia

Danmark

Tel: +45 76 24 0133

Fax: +45 75 94 4679

E-mail: tedk@psion.com

#### **Psion Teklogix AB**

Stora Badhusgatan 18-20

411 21 Göthenburg, Sweden

Tel: +46 31 13 15 50

Fax: +46 31 13 57 80

E-mail: info@teklogix.se

**Psion Teklogix (UK) Ltd.**

Bourne End Business Centre  
Cores End Road  
Bourne End  
Buckinghamshire SL8 5AR, England  
Tel: +44 1628 648800  
Fax: +44 1628 648810  
WWW: www.teklogix.co.uk  
E-mail: tekuk@psion.com

**Psion Teklogix Finland**

Metsänneidonkuja 8  
02130 Espoo  
Finland  
Tel: +358 9 4307 8390  
Fax: +358 9 4307 8395  
E-mail: tekeuro@psion.com

**Psion Teklogix Italia S.r.l**

Via Galilei, 47  
20092 Cinisello Balsamo  
Milan, Italy  
Tel: +39 02 6604 5410  
Fax: +39 02 6604 5412  
E-mail: tkxitalia@psion.com

**Psion Asia Pacific Pte. Ltd.**

210 South Bridge Road  
#03-01 Singapore 058759  
Tel: +65 673 58108  
Fax: +65 673 35990  
E-mail: teksing@teklogix.com

**Psion Teklogix de Mexico, S.A.  
de C.V.**

Sierra Mojada 626, 2º Piso  
Col. Lomas Barrilaco, C.P. 11010  
Mexico, D.F., Mexico  
Tel.: +5255 5 202 6802/6950  
Fax: +5255 5 202 4505  
E-mail: salesusa@psion.com

**Psion Teklogix Benelux**

Nieuwe weg 1,  
2070 Zwijndrecht  
Belgium  
Tel: +32 3 250 22 00  
Fax: +32 3 250 22 20  
E-mail: info@psionteklogix.be

**Psion Teklogix España, S.L.**

Cityparc Ronda de Dalt  
Ctra. Hospitalet 147-149  
Edificio Atenas 2º 3ª  
08940 Cornellà de Llobregat (Barce-  
lona)  
España  
Tel: +34 9 3475 0220  
Fax: +34 9 3475 0230  
E-mail: teklogix@apdo.com

**Psion Teklogix B.V.**

Venrayseweg 57,  
5928 NZ Venlo  
Nederlands  
Tel: +31 77 32400 44  
Fax: +31 77 32400 53

### **Psion Teklogix Africa**

Postnet Suite 39, Private Bag x11  
Halfwayhouse, 1685 Ground Floor  
East

Waterfall Edge Phase 2, Waterfall  
Park

Bekker Road MIDRAND 1685

South Africa

Tel: +27 11 805 7440/1/2

Fax: +27 11 805 7444

### **Psion Teklogix Wireless Technologies (Shanghai) Ltd.**

Unit 1507-08

Mingshen Building

No.3131 Kai Xuan Rd

Shanghai 200030

China

Tel: +86 21 5407 1991

Fax: +86 21 5407 1992

### **Psion Teklogix Systems India**

**Pvt. Ltd.**

M-74, 1st Floor, "M" Block Market  
Greater Kailash-II

New Delhi - 110048

India

Tel: +91 11 26219257

Fax: +91 11 26219076

E-mail: [tekind@psion.com](mailto:tekind@psion.com)

### **Psion Teklogix Taiwan Co., Ltd.**

15FL-5, No. 366 Boai 2nd Road,  
Tzuoying District, KAOHSIUNG 813

Taiwan, R.O.C.

Tel: +886 7 558 2028

Fax: +886 7 558 3328

E-mail: [jerry.chen@teklogix.com](mailto:jerry.chen@teklogix.com)

## 5.4 World Wide Web

[www.psionteklogix.com](http://www.psionteklogix.com)

# Approvals

## Declaration Of Conformity

Product: **7525 WORKABOUT PRO**  
Application of Council Directive(s): EMC Directive: 89/336/EEC  
Low Voltage Directive: 73/23/EEC  
Conformity Declared to Standards: EN 55022: 1998 Class B;  
EN 61000-3-2; EN 61000-3-3  
EN 55024:1998;  
EN 61000-4-2; -4kV CD; -8kV AD  
EN 61000-4-3; 3V/m, 80-1000 MHz  
EN61000-4-4; -1kV Power lines  
EN 61000-4-5; -1kV Differential mode  
EN 61000-4-6; 3VRMS, 150kHz-80MHz  
EN 61000-4-11; AC Mains Ports  
EN 60950: 2000  
Manufacturer: ASKEY COMPUTER CORP.  
10F, NO. 119, ChienKang Rd., Chung-Ho,  
Taipei, Taiwan, R.O.C.  
Year of Manufacture: 2004  
Manufacturer s Address in the European Community: PSION TEKLOGIX S.A.  
La Duranne; 135 Rue Rene Descartes; BP 421000  
13591 Aix-En-Provence  
Cedex 3; France  
Type of Equipment: Information Technology Equipment  
Equipment Class: Commercial and Light Industrial

*I the undersigned hereby declare that the equipment specified above conforms to the above directives and standards.*

**Manufacturer:**

**Legal Representative in Europe:**

\_\_\_\_\_  
Signature

\_\_\_\_\_  
Signature

\_\_\_\_\_  
John Chiou

\_\_\_\_\_  
Dominique Binckly

\_\_\_\_\_  
Position

\_\_\_\_\_  
Position

\_\_\_\_\_  
Product Certification Manager

\_\_\_\_\_  
Vice President International Sales

\_\_\_\_\_  
Place

\_\_\_\_\_  
Place

\_\_\_\_\_  
ASKEY COMPUTER, TAIPEI

\_\_\_\_\_  
PSION TEKLOGIX S.A. France

# FCC DECLARATION OF CONFORMITY (DoC)

Applicant's Name & Address: ASKEY COMPUTER CORP.  
10F, NO. 119, ChienKang Rd., Chung-Ho,  
Taipei, Taiwan, R.O.C.  
Contact Person: Piyang Chiang  
Telephone No.:(510) 440-8694  
47849 FREMONT BLVD. FREMONT,  
CA, 94538, USA

US Representative's Name & Address: 1810 Airport Exchange Blvd., Suite 500  
Erlanger, KY, 41018, USA  
Contact Person: Kyle Day  
Telephone No.: (859) 372-4329

Equipment Type/Environment: Computing Devices  
Trade Name / Model No.: WORKABOUT PRO, Model 7525

Year of Manufacture: 2004

Standard(s) to which Conformity is Declared:

The WORKABOUT PRO, model 7525, supplied by Askey Computer Corp., has been tested and found to comply with **FCC PART 15, SUBPART B - UNINTENTIONAL RADIATORS, CLASS B COMPUTING DEVICES FOR HOME & OFFICE USE.**

*I, the undersigned, hereby declare that the equipment as tested is representative within manufacturing tolerance to units.*

## Applicant

Signature  
Piyang Chiang

Full Name

General Manager

Position

Askey International Corp

Place

February 4, 2004

Date

## Legal Representative in U.S.

Signature  
Kyle Day

Full Name

V.P. Channel Sales

Position

Erlanger, KY 41018, USA

Place

February 4, 2004

Date

---

# Safety Summary

This equipment complies with Class B Part 15 of the FCC rules.

Operation is subject to the following two conditions:

1. This device may not cause harmful interference, and
2. This device must accept any interference received, including interference that may cause undesired operation.

Changes or modifications not expressly approved by Psion Teklogix, the party responsible for compliance, may void the user's authority to operate the equipment.

## **1. FCC Information to Users**

For Class B Unintentional Radiators:

This equipment has been tested and found to comply with the limits for a Class B digital device, pursuant to Part 15 of the FCC Rules. These limits are designed to provide reasonable protection against harmful interference in a residential installation. This equipment generates, uses, and can radiate radio frequency energy and, if not installed and used in accordance with the instruction manual, may cause harmful interference to radio communications. However, there is no guarantee that interference will not occur in a particular installation. If this equipment does cause harmful interference to radio or television reception, which can be determined by turning the equipment off and on, the user is encouraged to try to correct the interference by one of more of the following measures:

- Reorient or relocate the receiving antenna
- Increase the separation between the equipment and receiver
- Connect the equipment into an outlet on a circuit different from that to which the receiver is connected.
- Consult the dealer or an experienced radio/TV technician for help.

## 2. Warning to Users

**Warning:** *Changes or modifications not expressly approved by Psion Teklogix Inc. could void the user's authority to operate the equipment.*

This product complies with 21 CFR 1040.10, 1040.11 Class II and IEC 60825-1: 2001, Class 2 laser product.

### LASER WARNINGS

For your own safety, it is critical that you comply with the following warnings:

#### CAUTION

Do not look into the laser beam or point the beam at people or animals.

#### CAUTION

Using controls or adjustments, or performing procedures other than those specified herein may result in hazardous radiation exposure.

#### CAUTION

The use of optical instruments with this product will increase eye hazard.

This product may contain a laser scanner that emits less than 1.2 mW maximum radiant power at a wavelength of 650nm or 680nm. This product complies with 21 CFR 1040.10, 1040.11 and DIN EN 60825-1: 2001, and is classified as a Class 2 laser product.

The SE1200 ALR has an maximum radiated power less than 1.4 mW.



## **DO NOT OPERATE IN AN EXPLOSIVE ATMOSPHERE**

Operating Psion Teklogix equipment where explosive gas is present may result in an explosion.

## **DO NOT REMOVE COVERS OR OPEN ENCLOSURES**

To avoid injury, the equipment covers and enclosures should only be removed by qualified service personnel. Do not operate the equipment without the covers and enclosures properly installed.

## **CAUTION!**

Danger of explosion if a battery is incorrectly handled, charged, disposed of or replaced. Replace only with the same or equivalent type recommended by the manufacturer. Dispose of used batteries according to the instructions listed under the heading “The Battery” on page 7. Carefully review all battery safety issues.

## **VORSICHT!**

Explosionsgefahr bei unsachgemäßem Austausch der Batterie  
Ersatz nur durch denselben oder einen vom Hersteller empfohlenen gleichwertigen Typ. Entsorgung gebrauchter Batterien nach Angaben des Herstellers.

---

# Program License Agreements

## Microsoft's End User License Agreement

You have acquired a device ("DEVICE") that includes software licensed by Psion Teklogix Inc. from Microsoft Licensing Inc. or its affiliates ("MS"). Those installed software products of MS origin, as well as associated media, printed materials, and "online" or electronic documentation ("SOFTWARE") are protected by international intellectual property laws and treaties. The SOFTWARE is licensed, not sold. All rights reserved.

IF YOU DO NOT AGREE TO THIS END USER LICENSE AGREEMENT ("EULA"), DO NOT USE THE DEVICE OR COPY THE SOFTWARE. INSTEAD, PROMPTLY CONTACT PSION TEKLOGIX INC. FOR INSTRUCTIONS ON RETURN OF THE UNUSED DEVICE(S) FOR A REFUND. **ANY USE OF THE SOFTWARE, INCLUDING BUT NOT LIMITED TO USE ON THE DEVICE, WILL CONSTITUTE YOUR AGREEMENT TO THIS EULA (OR RATIFICATION OF ANY PREVIOUS CONSENT).**

**GRANT OF SOFTWARE LICENSE.** This EULA grants you the following license:

- You may use the SOFTWARE only on the DEVICE.
- **NOT FAULT TOLERANT.** THE SOFTWARE IS NOT FAULT TOLERANT. PSION TEKLOGIX INC. HAS INDEPENDENTLY DETERMINED HOW TO USE THE SOFTWARE IN THE DEVICE, AND MS HAS RELIED UPON PSION TEKLOGIX INC. TO CONDUCT SUFFICIENT TESTING TO DETERMINE THAT THE SOFTWARE IS SUITABLE FOR SUCH USE.
- **NO WARRANTIES FOR THE SOFTWARE. THE SOFTWARE is provided "AS IS" and with all faults. THE ENTIRE RISK AS TO SATISFACTORY QUALITY, PERFORMANCE, ACCURACY, AND EFFORT (INCLUDING LACK OF NEGLIGENCE) IS WITH YOU. ALSO, THERE IS NO WARRANTY AGAINST INTERFERENCE WITH YOUR ENJOYMENT OF THE SOFTWARE OR AGAINST INFRINGEMENT.** IF YOU HAVE RECEIVED ANY WARRANTIES REGARDING THE DEVICE OR THE SOFTWARE, THOSE WARRANTIES DO NOT ORIGINATE FROM, AND ARE NOT BINDING ON, MS.
- **Note on Java Support.** The SOFTWARE may contain support for programs written in Java. Java technology is not fault tolerant and is not designed, manufactured, or intended for use or resale as online control equipment in hazardous environments requiring fail-safe performance, such as in the operation of nuclear facilities, aircraft navigation or communication systems, air traffic control, direct life support machines, or weapons systems, in which the failure of Java technology could lead directly to death, personal injury, or severe physical or environmental damage. Sun Microsystems, Inc. has contractually obligated MS to make this disclaimer.
- **No Liability for Certain Damages. EXCEPT AS PROHIBITED BY LAW, MS SHALL HAVE NO LIABILITY FOR ANY INDIRECT, SPECIAL,**

**CONSEQUENTIAL OR INCIDENTAL DAMAGES ARISING FROM OR IN CONNECTION WITH THE USE OR PERFORMANCE OF THE SOFTWARE. THIS LIMITATION SHALL APPLY EVEN IF ANY REMEDY FAILS OF ITS ESSENTIAL PURPOSE. IN NO EVENT SHALL MS BE LIABLE FOR ANY AMOUNT IN EXCESS OF U.S. TWO HUNDRED FIFTY DOLLARS (U.S.\$250.00).**

- **Limitations on Reverse Engineering, Decompilation, and Disassembly.** You may not reverse engineer, decompile, or disassemble the SOFTWARE, except and only to the extent that such activity is expressly permitted by applicable law notwithstanding this limitation.
- **SOFTWARE TRANSFER ALLOWED BUT WITH RESTRICTIONS.** You may permanently transfer rights under this EULA only as part of a permanent sale or transfer of the Device, and only if the recipient agrees to this EULA. If the SOFTWARE is an upgrade, any transfer must also include all prior versions of the SOFTWARE.
- **EXPORT RESTRICTIONS.** You acknowledge that SOFTWARE is subject to U.S. export jurisdiction. You agree to comply with all applicable international and national laws that apply to the SOFTWARE, including the U.S. Export Administration Regulations, as well as end-user, end-use and destination restrictions issued by U.S. and other governments. For additional information see <http://www.microsoft.com/exporting/>.

#### **Meetinghouse Data Communications, Inc. End User License Agreement**

End User License Agreement:

ATTENTION: PLEASE READ THIS SOFTWARE LICENSE AGREEMENT ("LICENSE") CAREFULLY BEFORE INSTALLATION. USE OF THE SOFTWARE IS SUBJECT TO THE SOFTWARE LICENSE TERMS SET FORTH BELOW. USING THE SOFTWARE INDICATES YOUR ACCEPTANCE OF THESE LICENSE TERMS. IF YOU DO NOT ACCEPT THESE LICENSE TERMS, YOU MUST RETURN THE SOFTWARE FOR A FULL REFUND. IF THE SOFTWARE IS SUPPLIED WITH ANOTHER PRODUCT, YOU MAY RETURN THE ENTIRE UNUSED PRODUCT FOR A FULL REFUND.

Software License Terms:

The following terms govern your use of the enclosed Software unless you have a separate written agreement with Meetinghouse Data Communications, Inc. herein also known as "MDC".

License Grant:

MDC grants you a non-exclusive and non-transferable license to Use one copy of the Software. "Use" means storing, loading, installing, executing or displaying the Software. "Software" means software, documentation and any fonts accompanying this License whether on disk, in read only memory, on any other media or in any other form. You may not modify the Software or disable any licensing or control features of the Software. If the Software is licensed for "concurrent use", you may not allow more than the maximum number of authorized users to Use the Software concurrently.

The Software is licensed as a "Shareware" version, on one computer only. You may use the Software distributed and licensed as Shareware on a trial basis only. The shareware version of the Software may be distributed freely without any associated fees to other parties who wish to try the software as long as the Software is distributed within an exact copy of the original MDC self-extracting installation file. In other words, nothing may be left out of the Shareware as distributed on MDC's web site at <http://www.mtghouse.com>.

All permanent licenses are prepaid and the Software is licensed to you by MDC. You own the media on which the Software is recorded but MDC and/or MDC's licensor(s) retain title to the Software. The Software and any copies which this License authorizes you to make are subject to this License.

#### Permitted Uses and Restrictions:

This License allows you to install and use the Software on a single computer at a time. This License does not allow the Software to exist on more than one computer at a time. You may make one copy of the Software in machine-readable form for backup purposes only. The backup copy must include all copyright information contained on the original. Except as expressly permitted in this License, you may not, in whole or part, decompile, reverse engineer, disassemble, modify, rent, lease, loan, sublicense, distribute or create derivative works based upon the Software, or transmit the Software over a network. You may not copy the Software onto any bulletin board or similar system. You agree that you will not utilize any information obtained from MDC or obtained or learned in the course of using the Software, to develop or improve technology with similar functionality to the Software, nor will you directly or indirectly assist any other party in doing so. You further agree that you will not separate the various modules of the software for their different purposes, if any.

#### High Risk Activities:

The Software is not fault-tolerant and is not designed, manufactured or intended for use or resale as on-line control equipment in hazardous environments requiring fail-safe performance, such as in the operation of nuclear facilities, aircraft navigation or communication systems, air traffic control, direct life support machines, or weapons systems, in which the failure of the Software could lead directly to death, personal injury, or severe physical or environmental damage ("High Risk Activities"). Accordingly, MDC and its suppliers specifically disclaim any express or implied warranty of fitness for High Risk Activities. You agree that MDC and its suppliers will not be liable for any claims or damages arising from the use of the Software in such applications.

#### Ownership:

The Software is licensed, not sold. The Software is owned and copyrighted by MDC or its third party suppliers. Your license confers no title or ownership in the Software and is not a sale of any rights in the Software. You acknowledge such ownership and intellectual property rights and will not take any action to jeopardize, limit or interfere in any manner with MDC's or its suppliers' ownership of or rights with respect to the Software.

The Software is protected by copyright and other intellectual property laws and by international treaties. MDC's third party suppliers may protect their rights in the event of any violation of these License Terms.

**Termination:**

Your rights under this License will terminate automatically without notice from MDC if you fail to comply with any term(s) of this License. Upon termination, you must immediately destroy the Software, together with all copies, adaptations and merged portions in any form.

**U.S. Government Restricted Rights:**

The Software and documentation have been developed entirely at private expense and are provided as "Commercial Computer Software" or "restricted computer software". They are delivered and licensed as "commercial computer software" as defined in DFARS 252.227-7013 (Oct 1988), DFARS 252.211-7015 (May 1991) or DFARS 252.227-7014 (Jun 1995), as a "commercial item" as defined in FAR 2.101 (a), or as "Restricted computer software" as defined in FAR 52.227-19 (Jun 1987) (or any equivalent agency regulation or contract clause), whichever is applicable. You have only those rights provided for such Software and Documentation by the applicable FAR or DFARS clause or the MDC standard software agreement for the product.

**Export Law Assurances:**

You may not use or otherwise export or reexport the Software except as authorized by United States law and the laws of the jurisdiction in which the Software was obtained. In particular, but without limitation, the Software may not be exported or reexported (i) into (or to a national or resident of) any U.S. embargoed country or (ii) to anyone on the U.S. Treasury Department's list of Specially Designated Nationals or the U.S. Department of Commerce's Table of Denial Orders. By using the Software, you represent and warrant that you are not located in, under control of, or a national or resident of any such country or on any such list.

**Limited Warranty on Media: (if applicable)**

MDC warrants the media on which the Software is recorded to be free from defects in materials and workmanship under normal use for a period of ninety (90) days from the date of original retail purchase. Your exclusive remedy under this paragraph shall be, at MDC's option, a refund of the purchase price of the product containing the Software or replacement of the Software which is returned to MDC or a MDC authorized representative with a copy of the receipt. THIS LIMITED WARRANTY AND ANY IMPLIED WARRANTIES ON THE MEDIA INCLUDING THE IMPLIED WARRANTIES OF MERCHANTABILITY AND FITNESS FOR A PARTICULAR PURPOSE ARE LIMITED IN DURATION TO NINETY (90) DAYS FROM THE DATE OF ORIGINAL RETAIL PURCHASE. SOME JURISDICTIONS DO NOT ALLOW LIMITATIONS ON HOW LONG AN IMPLIED WARRANTY LASTS, SO THIS LIMITATION MAY NOT APPLY TO YOU. THE LIMITED WARRANTY SET FORTH HEREIN IS EXCLUSIVE AND IN LIEU OF ALL OTHERS, WHETHER ORAL OR WRITTEN, EXPRESS OR IMPLIED. LICENSOR SPECIFICALLY DISCLAIMS ALL OTHER

WARRANTIES. THIS LIMITED WARRANTY GIVES YOU SPECIFIC LEGAL RIGHTS, AND YOU MAY ALSO HAVE OTHER RIGHTS WHICH VARY BY JURISDICTION.

**Disclaimer of Warranty on Software:**

You expressly acknowledge and agree that use of the Software is at your sole risk. The Software is provided "AS IS" and without warranty of any kind and MDC and MDC's licensor(s) (for the purposes of warranty and liability, MDC and MDC's licensor(s) shall be collectively referred to as "MDC") EXPRESSLY DISCLAIM ALL WARRANTIES AND/OR CONDITIONS, EXPRESS OR IMPLIED, INCLUDING, BUT NOT LIMITED TO, THE IMPLIED WARRANTIES AND/OR CONDITIONS OF MERCHANTABILITY OR SATISFACTORY QUALITY AND FITNESS FOR A PARTICULAR PURPOSE AND NONINFRINGEMENT OF THIRD PARTY RIGHTS. LICENSOR DOES NOT WARRANT THAT THE FUNCTIONS CONTAINED IN THE SOFTWARE WILL MEET YOUR REQUIREMENTS, OR THAT THE OPERATION OF THE SOFTWARE WILL BE UNINTERRUPTED OR ERROR-FREE, OR THAT DEFECTS IN THE SOFTWARE WILL BE CORRECTED. FURTHERMORE, LICENSOR DOES NOT WARRANT OR MAKE ANY REPRESENTATIONS REGARDING THE USE OR THE RESULTS OF THE USE OF THE SOFTWARE OR RELATED DOCUMENTATION IN TERMS OF THEIR CORRECTNESS, ACCURACY, RELIABILITY, OR OTHERWISE. NO ORAL OR WRITTEN INFORMATION OR ADVICE GIVEN BY LICENSOR OR AN LICENSOR AUTHORIZED REPRESENTATIVE SHALL CREATE A WARRANTY OR IN ANY WAY INCREASE THE SCOPE OF THIS WARRANTY. SHOULD THE SOFTWARE PROVE DEFECTIVE, YOU (AND NOT LICENSOR OR AN LICENSOR AUTHORIZED REPRESENTATIVE) ASSUME THE ENTIRE COST OF ALL NECESSARY SERVICING, REPAIR OR CORRECTION. SOME JURISDICTIONS DO NOT ALLOW THE EXCLUSION OF IMPLIED WARRANTIES, SO THE ABOVE EXCLUSION MAY NOT APPLY TO YOU. THE TERMS OF THIS DISCLAIMER DO NOT AFFECT OR PREJUDICE THE STATUTORY RIGHTS OF A CONSUMER ACQUIRING LICENSOR PRODUCTS OTHERWISE THAN IN THE COURSE OF A BUSINESS, NEITHER DO THEY LIMIT OR EXCLUDE ANY LIABILITY FOR DEATH OR PERSONAL INJURY CAUSED BY LICENSOR'S NEGLIGENCE.

**Limitation of Liability:**

UNDER NO CIRCUMSTANCES, EXCEPT TO THE EXTENT PROHIBITED BY LOCAL LAW, INCLUDING NEGLIGENCE, SHALL LICENSOR, ITS SUBSIDIARIES, AFFILIATES, OR SUPPLIERS BE LIABLE FOR ANY DIRECT, INCIDENTAL, SPECIAL, INDIRECT OR CONSEQUENTIAL DAMAGES (INCLUDING LOST PROFIT, LOST DATA, OR DOWNTIME COSTS) ARISING OUT OF OR RELATING TO THIS LICENSE, THE USE, INABILITY TO USE, OR THE RESULTS OF USE OF THE SOFTWARE, WHETHER BASED IN WARRANTY, CONTRACT, TORT OR OTHER LEGAL THEORY, AND WHETHER OR NOT ADVISED OF THE POSSIBILITY OF

SUCH DAMAGES. In no event shall MDC's total liability to you for all damages exceed the price paid for the license to use the Software, regardless of the form of the claim.

**Government End Users:**

If the Software is supplied to the United States Government, the Software is classified as "restricted computer software" as defined in clause 52.227-19 of the FAR. The United States Government's rights to the Software are as provided in clause 52.227-19 of the FAR.

**Controlling Law and Severability:**

This License shall be governed by the laws of the United States and the State of New Hampshire. As to any dispute relating to this License or the Software, you further agree to jurisdiction and venue in the Federal and State Courts located in the State of New Hampshire. If for any reason a court of competent jurisdiction finds any provision, or portion thereof, to be unenforceable, the remainder of this License shall continue in full force and effect.

**Acknowledgement:**

Your use of any software produced by MDC is based only on your acknowledgement that you have read this License, understand it, and agree to be bound by its terms and conditions.

**MDC Acknowledgments:**

This product includes software developed by MDC and its licensors. This product includes software developed by the OpenSSL Project for use in the OpenSSL Toolkit (<http://www.openssl.org/>). This product includes cryptographic software written by Eric Young (eay@cryptsoft.com). This product includes software written by Tim Hudson (tjh@cryptsoft.com).

**Complete Agreement:**

This License constitutes the entire agreement between the parties with respect to the use of the Software and supersedes all prior or contemporaneous understandings regarding such subject matter. No amendment to or modification of this License will be binding unless in writing and signed by MDC.

**Note:** *EXCEPT TO THE EXTENT ALLOWED BY LOCAL LAW, THESE WARRANTY TERMS DO NOT EXCLUDE, RESTRICT, OR MODIFY, AND ARE IN ADDITION TO, THE MANDATORY STATUTORY RIGHTS APPLICABLE TO THE LICENSE OF THE SOFTWARE TO YOU.*

Meetinghouse Data Communications, Inc.

150 Greenleaf Avenue, Unit F

Portsmouth, NH 03801

Revised 8/12/2002

## **FCC Information to User**

### **Information of the responsible party for a DoC product**

Company Name: PSC SCANNING INC./PSC Scanning Inc

Address: 959 Terry Street Eugene, OR 97402 U.S.A.

Contact: MR. JERRY KALINA

Telephone: (541)683-5700

Fax: (541)345-7140

### **Federal Communications Commission (FCC) Requirements, Part 15**

This equipment has been tested and found to comply with the limits for a class B digital device, pursuant to part 15 of the FCC Rules. These limits are designed to provide reasonable protection against harmful interference in a residential installation.

This equipment generates, uses and can radiate radio frequency energy and, if not installed and used in accordance with the instructions, may cause harmful interference to radio communications. However, there is no guarantee that interference will not occur in a particular installation. If this equipment does cause harmful interference to radio or television reception, which can be determined by turning the equipment off and on, the user is encouraged to try to correct the interference by one or more of the following measures:

- Reorient or relocate the receiving antenna.
- Increase the separation between the equipment and receiver.
- Connect the equipment into an outlet on a circuit different from that to which the receiver is connected.
- Consult the dealer or an experienced radio/TV technician for help.

### **Regulatory information / Disclaimers**

Installation and use of this PDA must be in strict accordance with the instructions included in the user documentation provided with the product. Any changes or modifications (including the antennas) made to this device that are not expressly approved by the manufacturer may void the user's authority to operate the equipment. The manufacturer is not responsible for any radio or television interference caused by unauthorized modification of this device, or the substitution of the connecting cables and equipment other than manufacturer specified. It is the responsibility of the user to correct any interference caused by such unauthorized modification, substitution or attachment. Manufacturer and



## **FCC Information to User**

### **Information of the responsible party for a DoC product**

Company Name: PSC SCANNING INC./PSC Scanning Inc

Address: 959 Terry Street Eugene, OR 97402 U.S.A.

Contact: MR. JERRY KALINA

Telephone: (541)683-5700

Fax: (541)345-7140

### **Federal Communications Commission (FCC) Requirements, Part 15**

This equipment has been tested and found to comply with the limits for a class B digital device, pursuant to part 15 of the FCC Rules. These limits are designed to provide reasonable protection against harmful interference in a residential installation.

This equipment generates, uses and can radiate radio frequency energy and, if not installed and used in accordance with the instructions, may cause harmful interference to radio communications. However, there is no guarantee that interference will not occur in a particular installation. If this equipment does cause harmful interference to radio or television reception, which can be determined by turning the equipment off and on, the user is encouraged to try to correct the interference by one or more of the following measures:

- Reorient or relocate the receiving antenna.
- Increase the separation between the equipment and receiver.
- Connect the equipment into an outlet on a circuit different from that to which the receiver is connected.
- Consult the dealer or an experienced radio/TV technician for help.

### **Regulatory information / Disclaimers**

Installation and use of this PDA must be in strict accordance with the instructions included in the user documentation provided with the product. Any changes or modifications (including the antennas) made to this device that are not expressly approved by the manufacturer may void the user's authority to operate the equipment. The manufacturer is not responsible for any radio or television interference caused by unauthorized modification of this device, or the substitution of the connecting cables and equipment other than manufacturer specified. It is the responsibility of the user to correct any interference caused by such unauthorized modification, substitution or attachment. Manufacturer and

its authorized resellers or distributors will assume no liability for any damage or violation of government regulations arising from failing to comply with these guidelines.

**IMPORTANT NOTE (CO-LOCATION)**

FCC RF Radiation Exposure Statement: This equipment complies with FCC RF radiation exposure limits set forth for an uncontrolled environment. This device and its antenna **must** not be co-located or operating in conjunction with any other antenna or transmitter.

**CE Declaration of Conformity**

For the following equipment: PDA

**CE 0984** 

Is herewith confirmed to comply with the requirements set out in the Council Directive on the Approximation of the Laws of the Member States relating to Electromagnetic Compatibility (89/336/EEC), Low-voltage Directive (73/23/EEC) and the Amendment Directive (93/68/EEC), the procedures given in European Council Directive 99/5/EC and 89/336/EEC.

The equipment was passed. The test was performed according to the following European standards:

- EN 300 328 V.1.4.1 (2003-04)
- EN 301 489-1 V.1.3.1 (2001-09) / EN 301 489-17 V.1.1.1 (2000-09)
- EN 301 893 V.1.2.2 (2003-06)
- EN 50371: 2002
- EN 60950: 2000