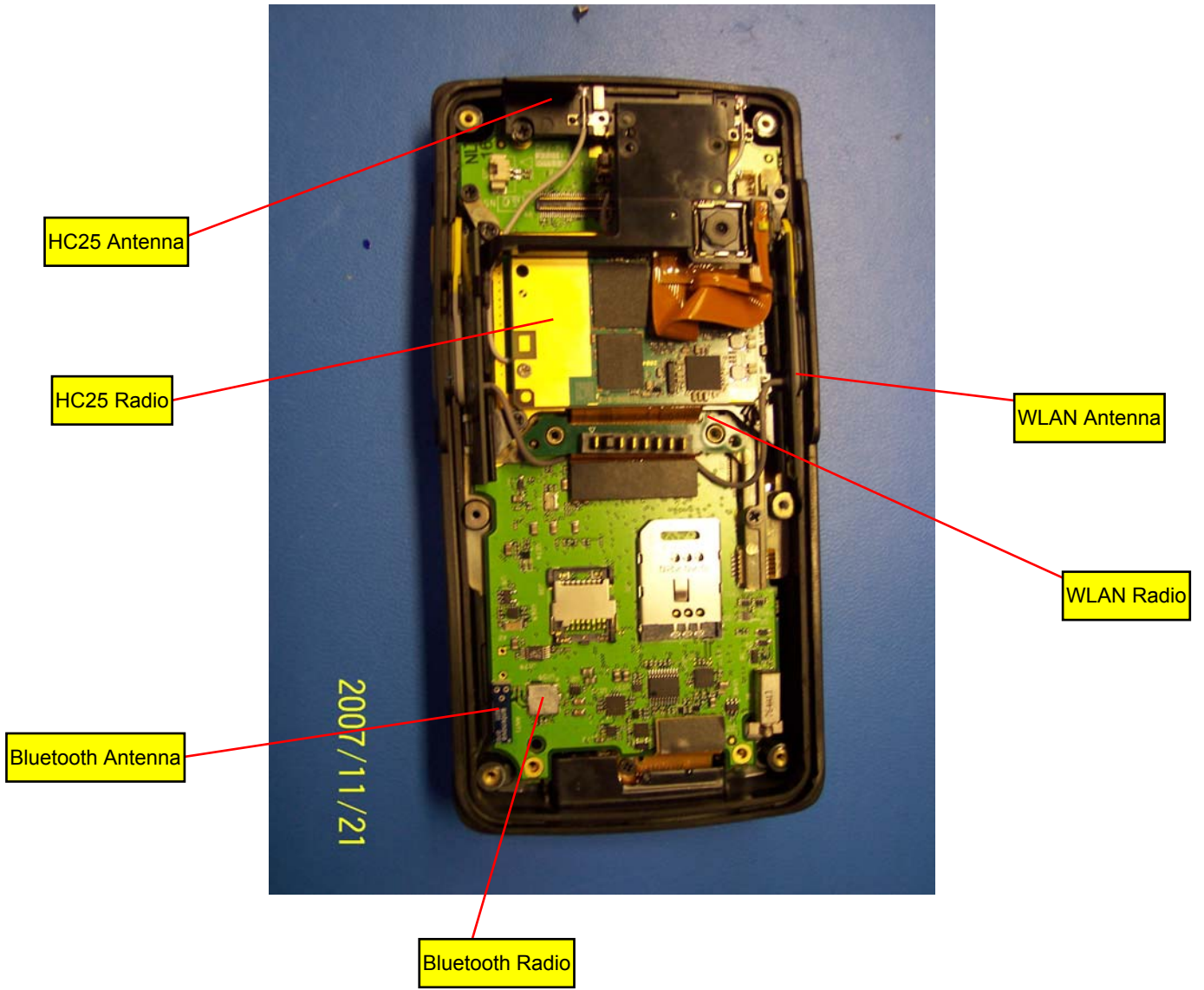


Antenna Location



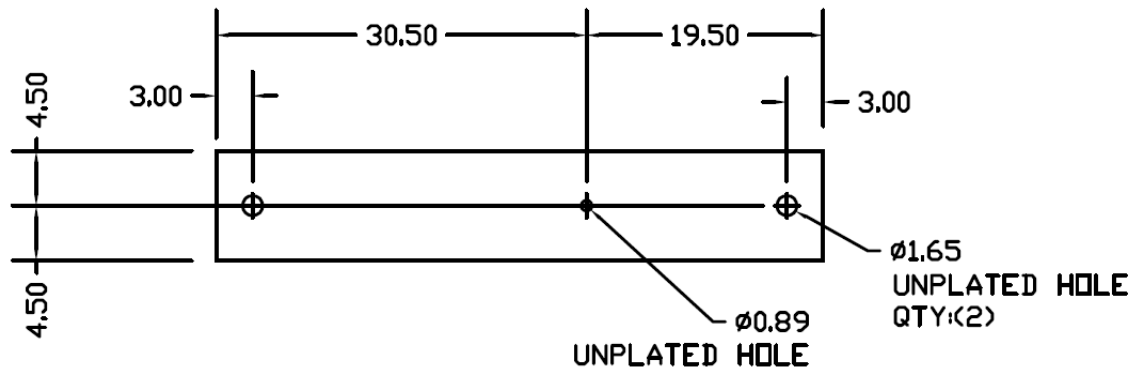
Antenna Specification

Manufacturer: Laird Technologies  
Model: CAF96323  
Type: PIFA  
Gain: 0 dBi

## WLAN Antenna Specification

- Frequency range 2400MHz – 2500MHz
- Impedance 50 Ohms
- VSWR < 2 :1 over the specified frequency range for the antenna
- Gain 2.1dBi

## Mechanical dimensions



**Note:** antenna board thickness is 0.030" or 0.762 mm.

# 3D Radiated pattern

