



**UltraTech**  
Engineering Labs Inc.

RECEIVER'S ANTENNA  
POWER CONDUCTED EMISSIONS

APPLICANT: TELEOSIX INC  
PRODUCT NAME: HANDHELD TERMINAL  
MODEL NO.: 7025

■ CHANNEL FREQUENCY TUNED TO: 906 MHz  
■ COMMENTS: PEAK

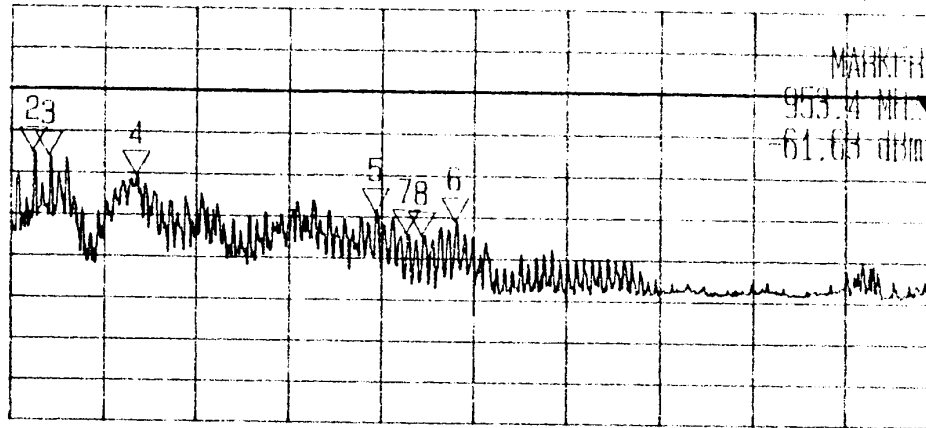
■ TESTED BY: ...  
■ DATE: 03/01/02

REF -37.0 dBm  
10dB/

ATT 10 dB

A\_view B\_blank

MKR  
953.4 MHz



RBW 100 kHz  
VBW 100 kHz  
SWP 20 s

START 30.0 MHz

STOP 960.0 MHz

\*\*\* Multi Marker List \*\*\*

No. 1:	953.4 MHz	-61.63 dBm	A
No. 2:	52.6 MHz	-71.69 dBm	A
No. 3:	68.5 MHz	-72.78 dBm	A
No. 4:	156.2 MHz	-77.31 dBm	A
No. 5:	396.7 MHz	-86.00 dBm	A
No. 6:	476.4 MHz	-87.94 dBm	A
No. 7:	427.2 MHz	-90.59 dBm	A
No. 8:	443.2 MHz	-91.09 dBm	A
Δ:			



**UltraTech**  
Engineering Labs Inc.

RECEIVER'S ANTENNA  
POWER CONDUCTED EMISSIONS

APPLICANT: TEKLOGIX INC.  
PRODUCT NAME: HANDHELD TERMINAL  
MODEL NO.: 7025

■ CHANNEL FREQUENCY TUNED TO: 915 MHz  
■ COMMENTS: PEAK

■ TESTED BY: TKL  
■ DATE: 03/01/17

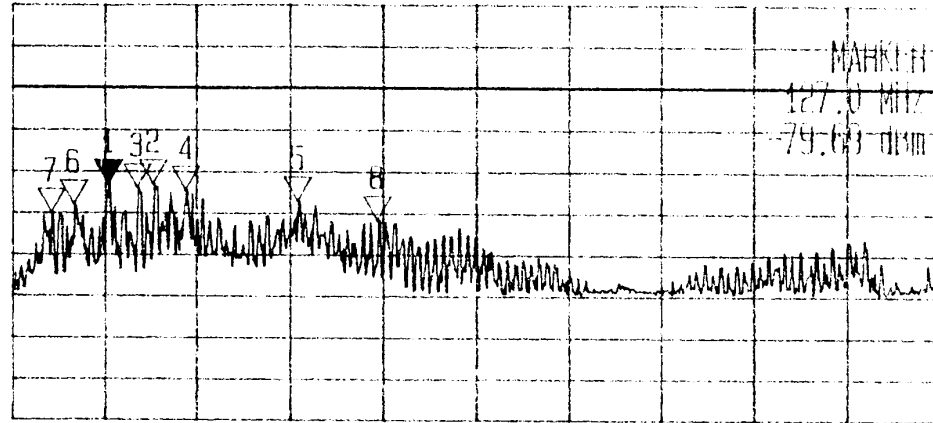
REF -37.0 dBm  
10dB/

ATT 10 dB

A view B blank

MK1  
127.0 MHz

RBW 100 kHz  
VBW 100 kHz  
SWP 50 s



START 30.0 MHz

STOP 960.0 MHz

\*\*\* Multi Marker List \*\*\*

No.	Frequency (MHz)	Power (dBm)	View
No. 1:	127.0	-79.69	A
No. 2:	172.2	-79.97	A
No. 3:	156.2	-80.75	A
No. 4:	205.4	-81.47	A
No. 5:	317.0	-83.97	A
No. 6:	92.4	-84.69	A
No. 7:	69.9	-86.97	A
No. 8:	396.7	-88.44	A
Δ:			



**UltraTech**  
Engineering Labs Inc.

RECEIVER'S ANTENNA  
POWER CONDUCTED EMISSIONS

APPLICANT: TELECOM INC.  
PRODUCT NAME: HANDHELD TERMINAL  
MODEL NO.: 7025

■ CHANNEL FREQUENCY TUNED TO: 924 MHz  
■ COMMENTS: PEAK

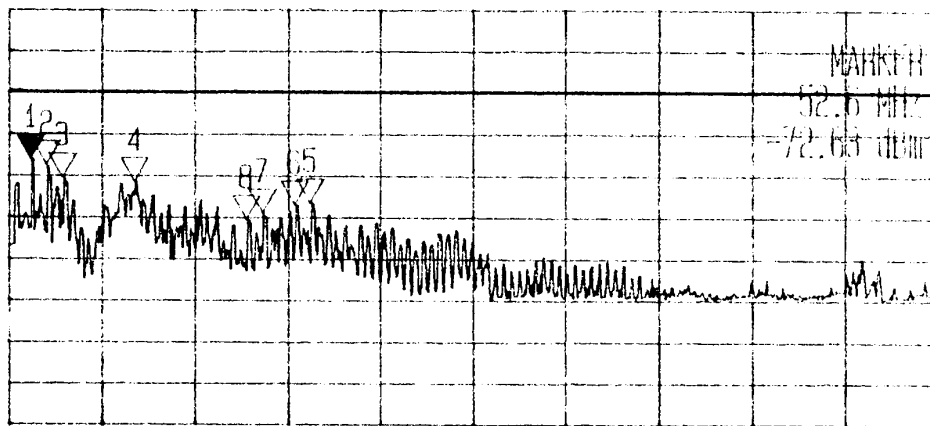
■ TESTED BY: TAL  
■ DATE: 03/01/11

REF -37.0 dBm  
10dB/

ATT 10 dB

A\_view B\_blank

MKR  
52.6 MHz



HBW 100 kHz  
VBW 100 kHz  
SWP 50 s

START 30.0 MHz

STOP 960.0 MHz

\*\*\* Multi Marker List \*\*\*

No.	Frequency (MHz)	Power (dBm)	View
No. 1:	52.6 MHz	-72.63 dBm	A
No. 2:	68.5 MHz	-74.41 dBm	A
No. 3:	84.5 MHz	-77.31 dBm	A
No. 4:	156.2 MHz	-78.13 dBm	A
No. 5:	331.6 MHz	-83.34 dBm	A
No. 6:	315.6 MHz	-83.69 dBm	A
No. 7:	283.8 MHz	-85.75 dBm	A
No. 8:	267.8 MHz	-87.44 dBm	A
Δ:			