

AMPIRE
128143G
REV.
2004.8.10

294V-0 0433

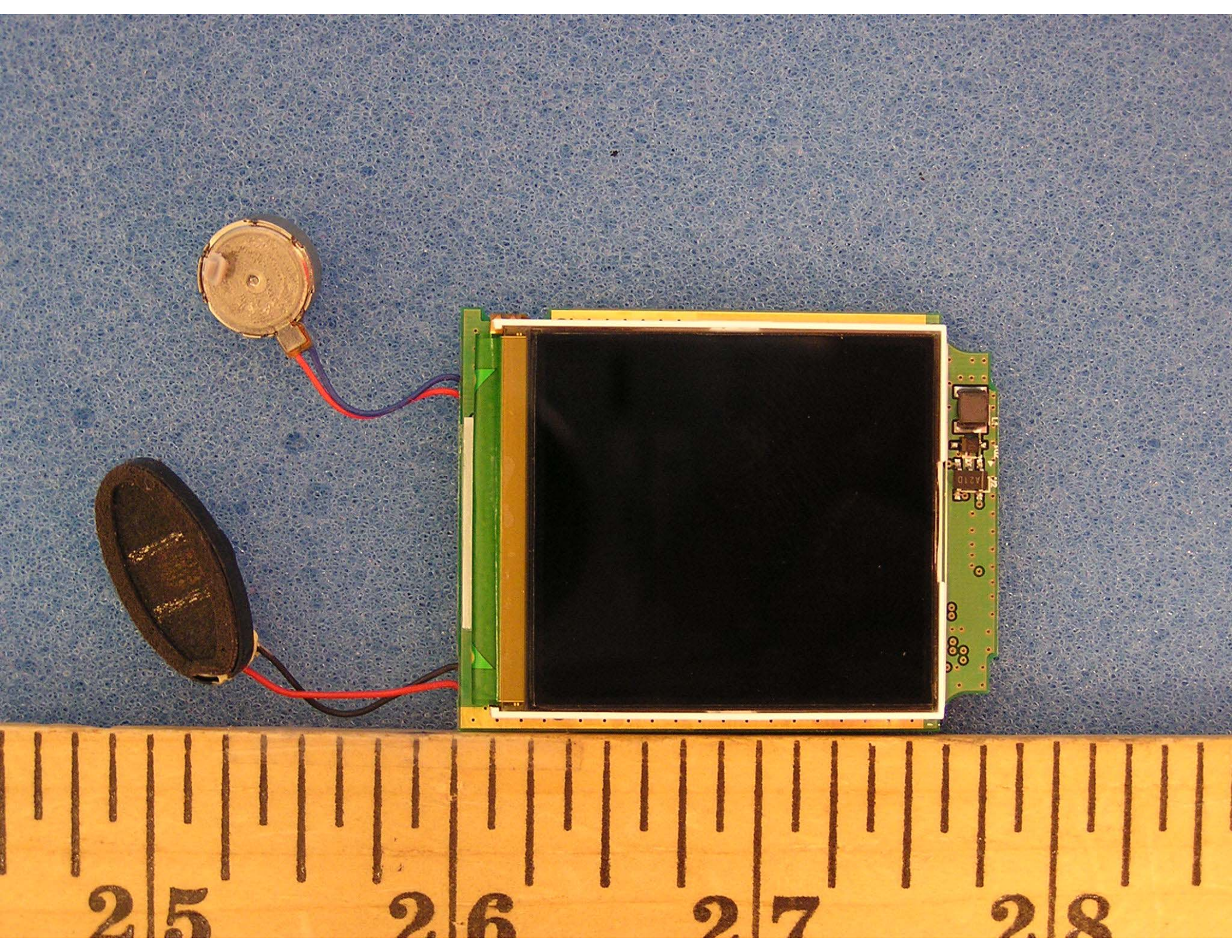
SAMHWA
19T
16Ω

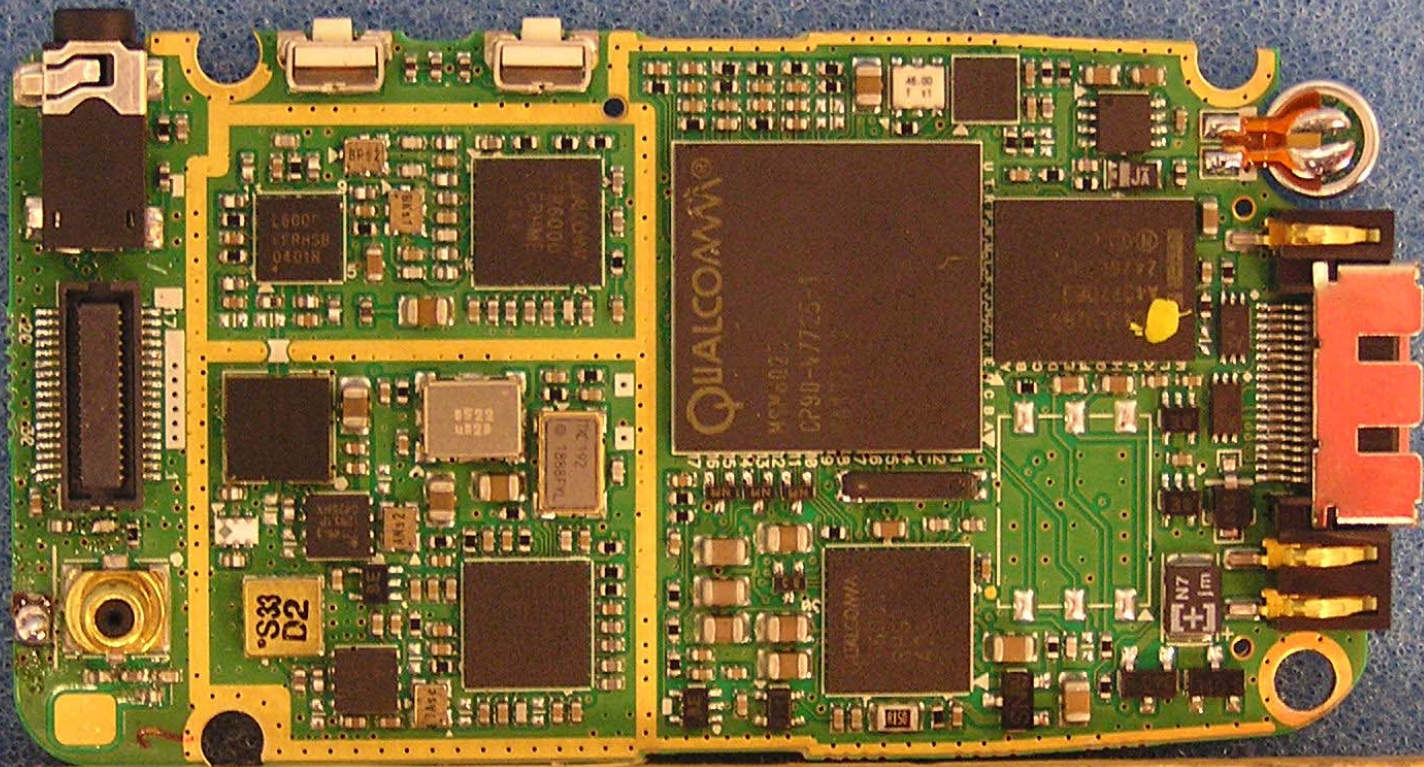
25

26

27

28



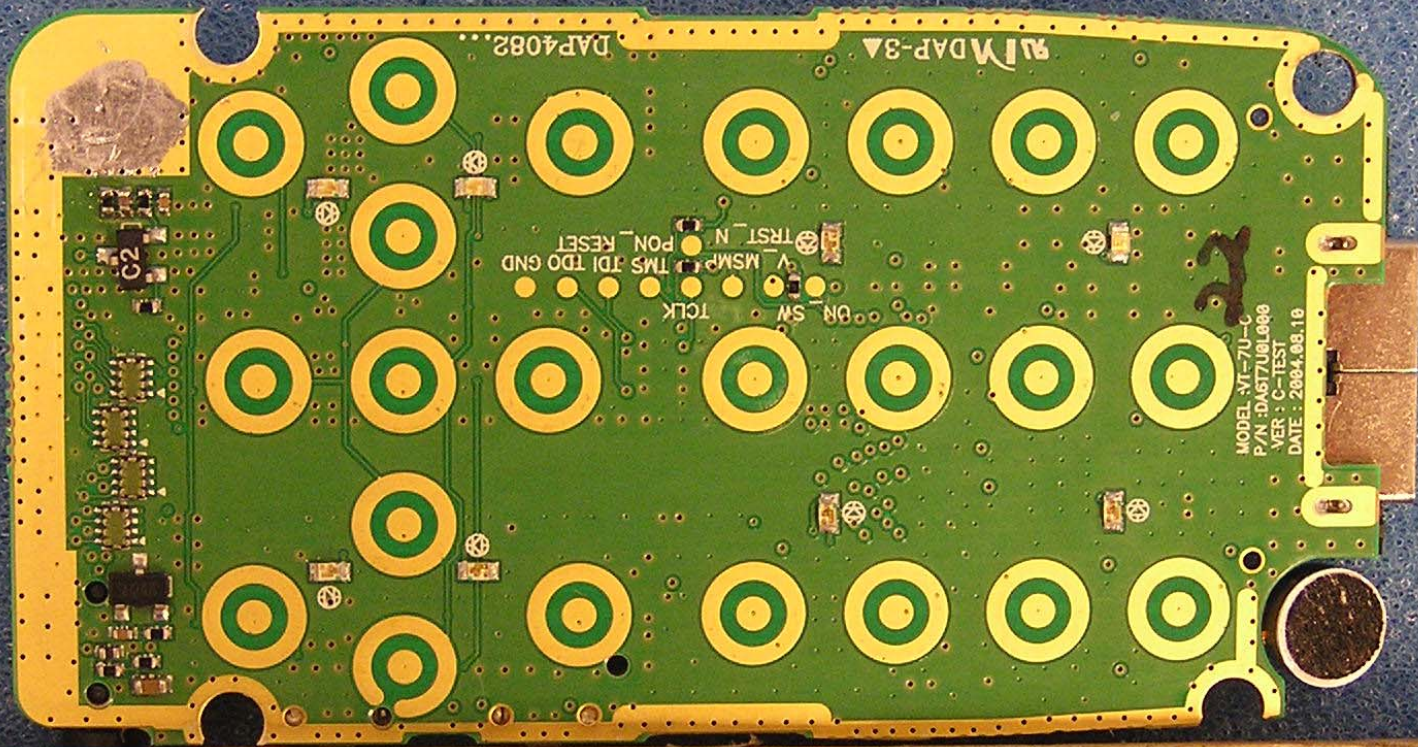


2 5/8

2 6/8

2 7/8

2 8/8



MI DAP-3A
DAP4082

V_MSM_P
TRST_N
PON_RESET
TMS_IDI_TDO_GND
TCLK
GN_SW

MODEL: MI-7U-C
P/N: DA67U08088
VER: C-TEST
DATE: 2004.08.18

2|5

2|6

2|7

2|8

3|

