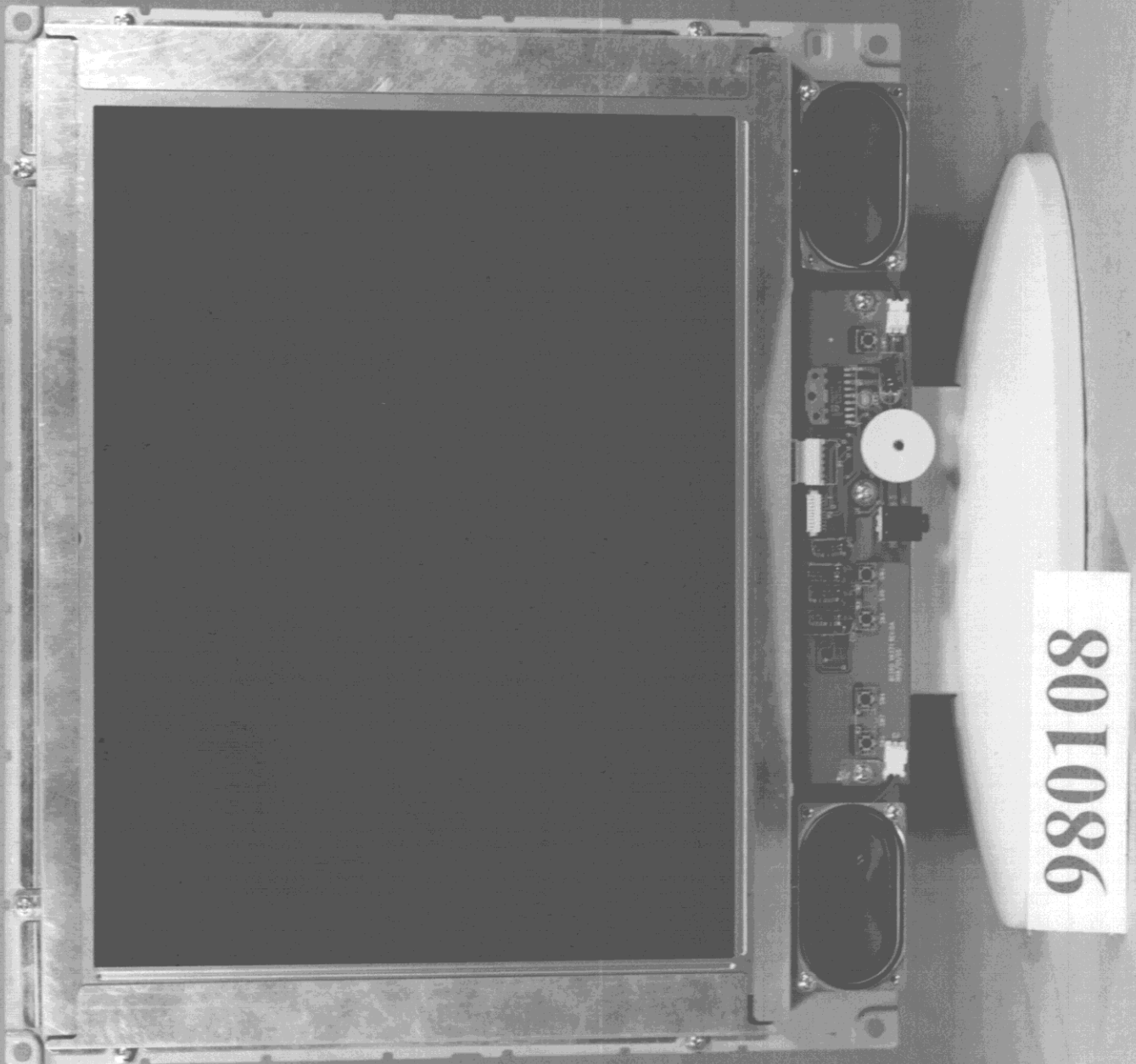
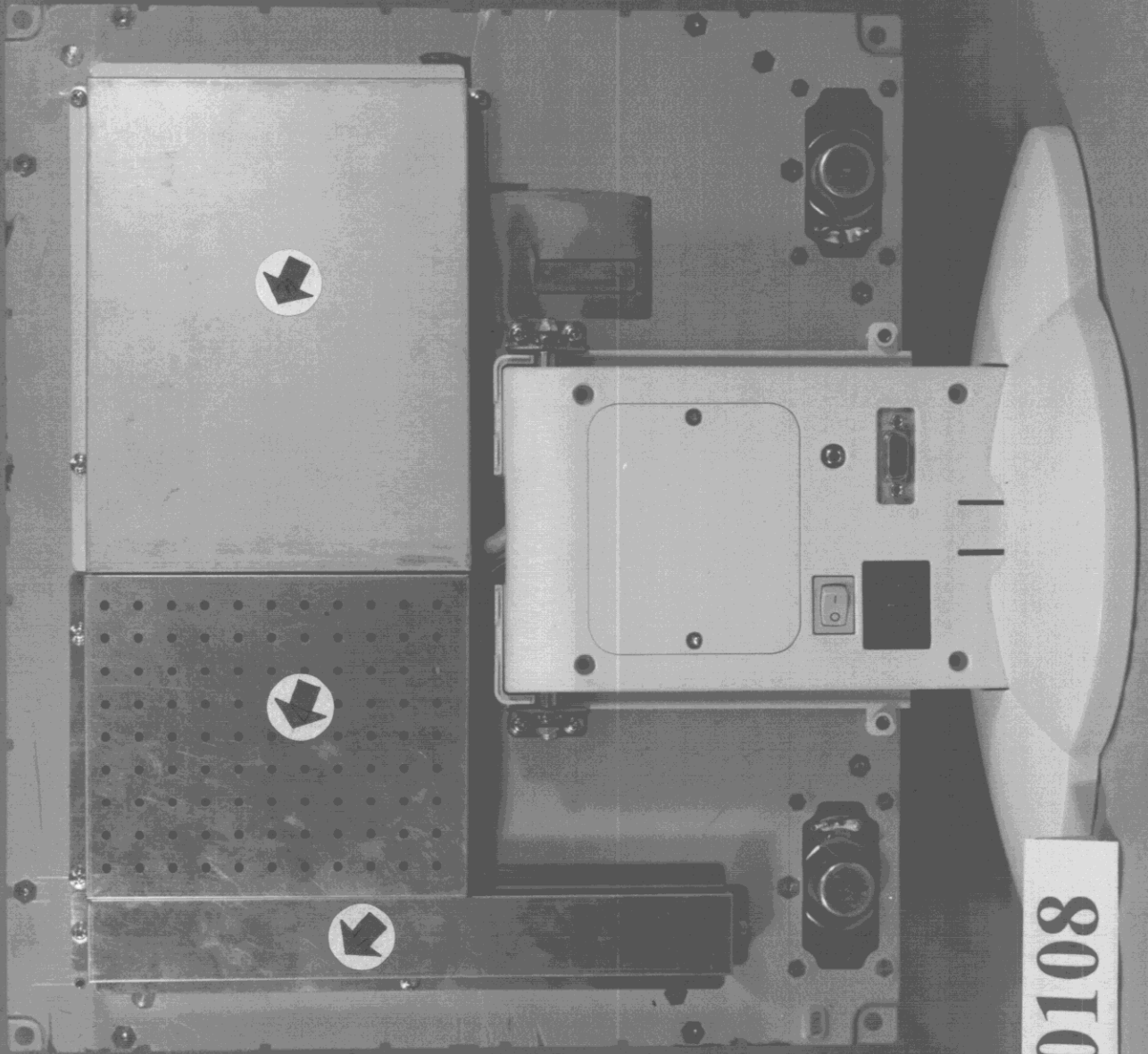


# The Internal View of EUT (1)

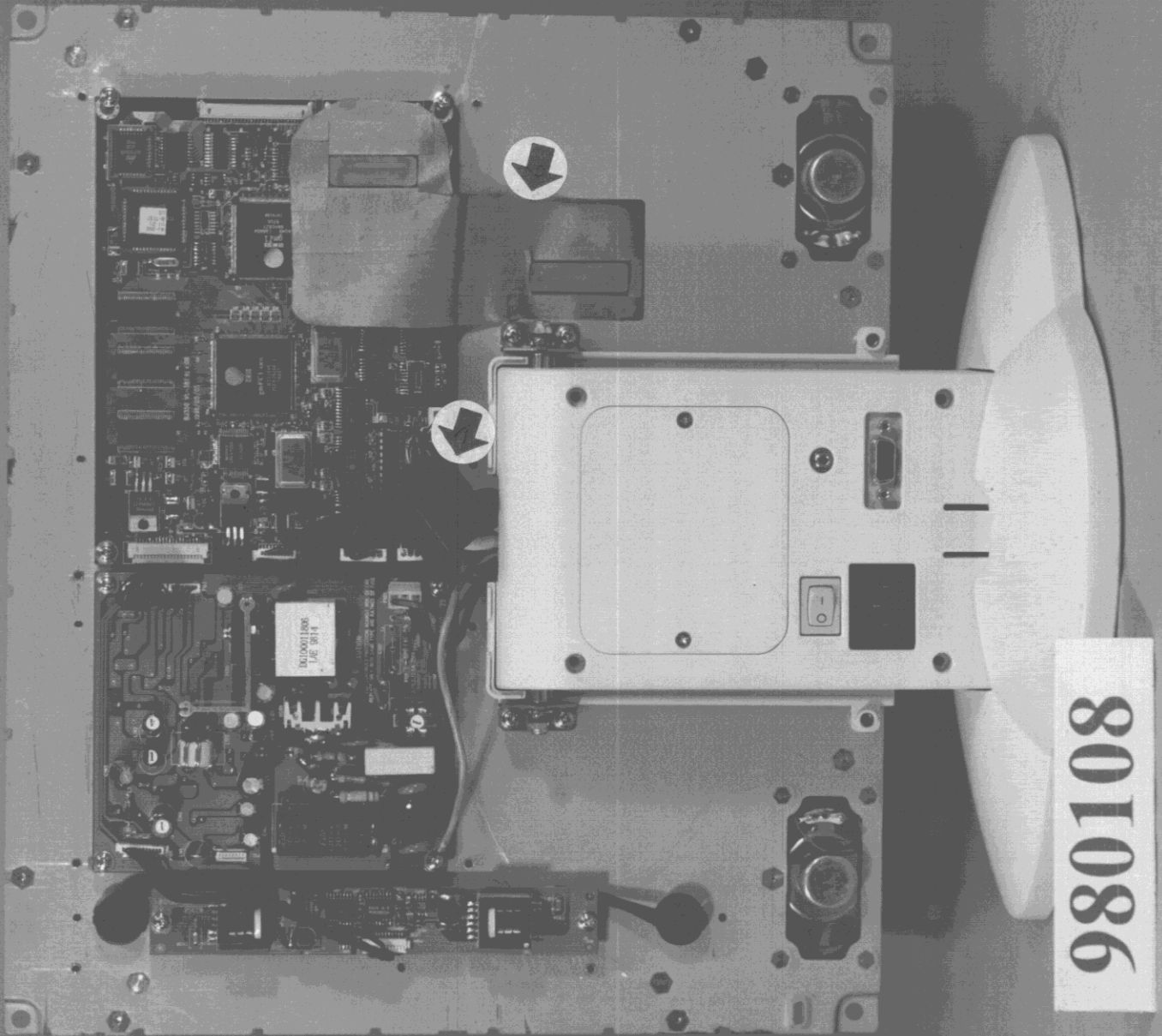


## The Internal View of EUT (2)

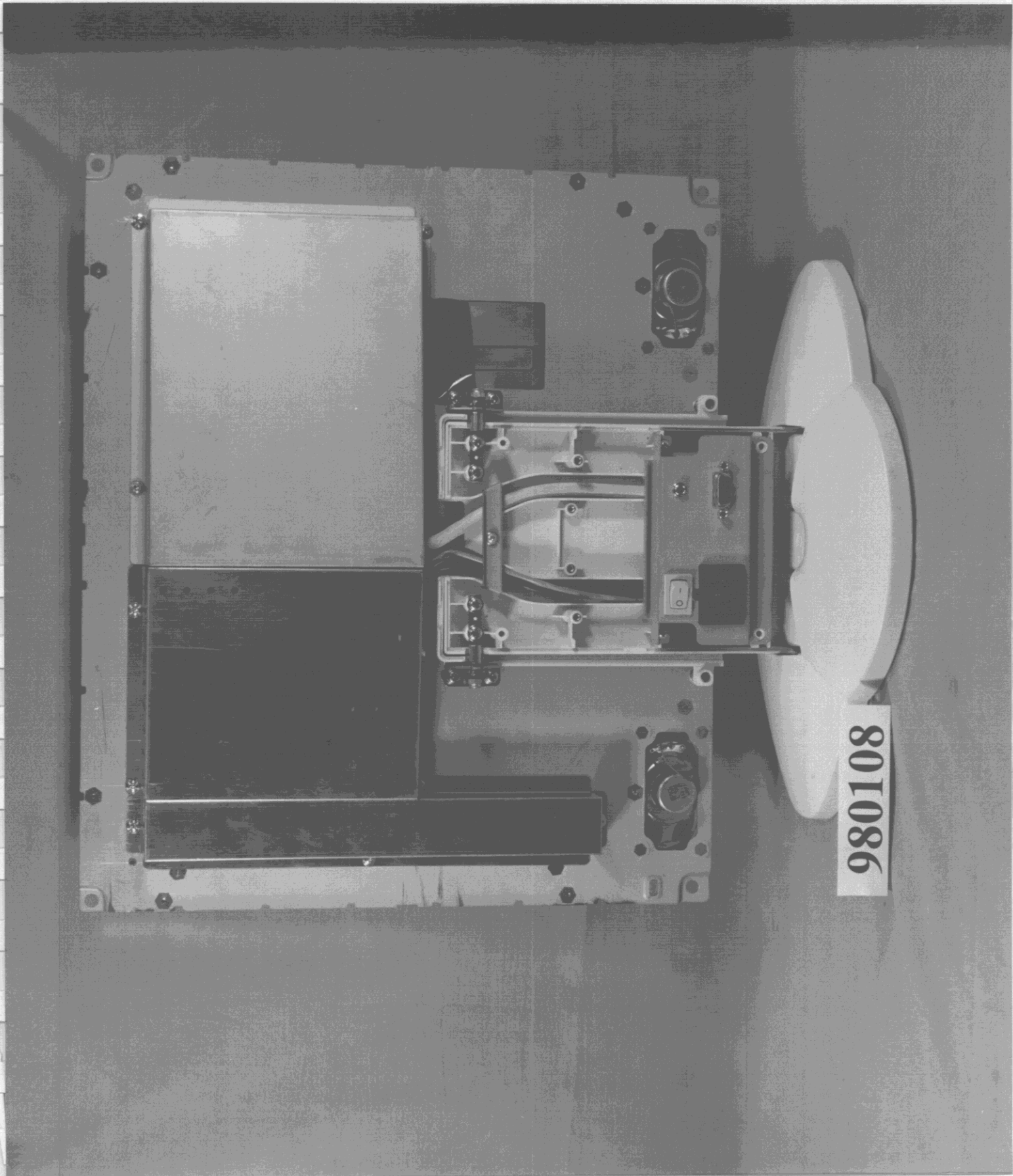


980108

### The Internal View of EUT (3)

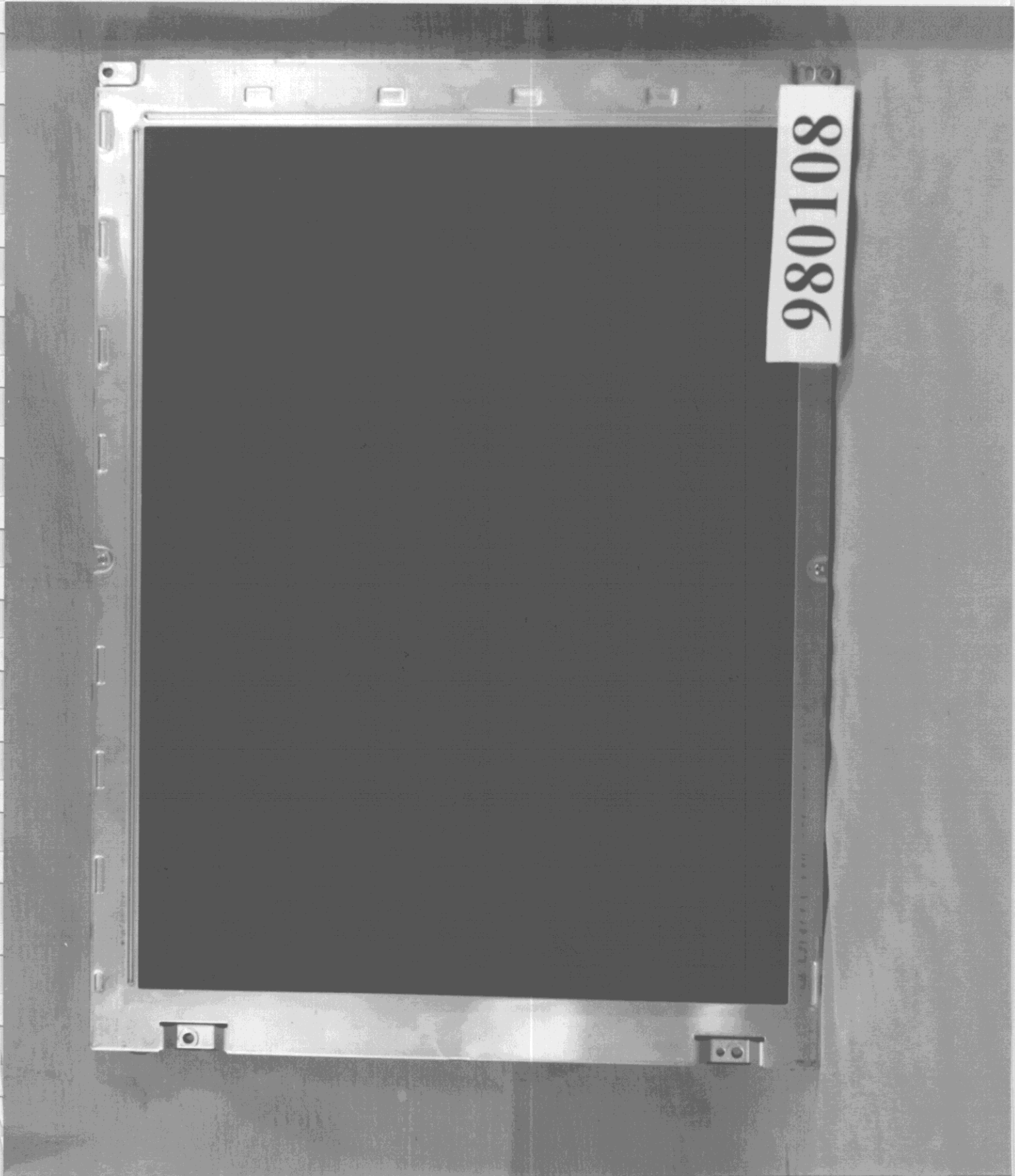


### The Internal View of EUT (4)

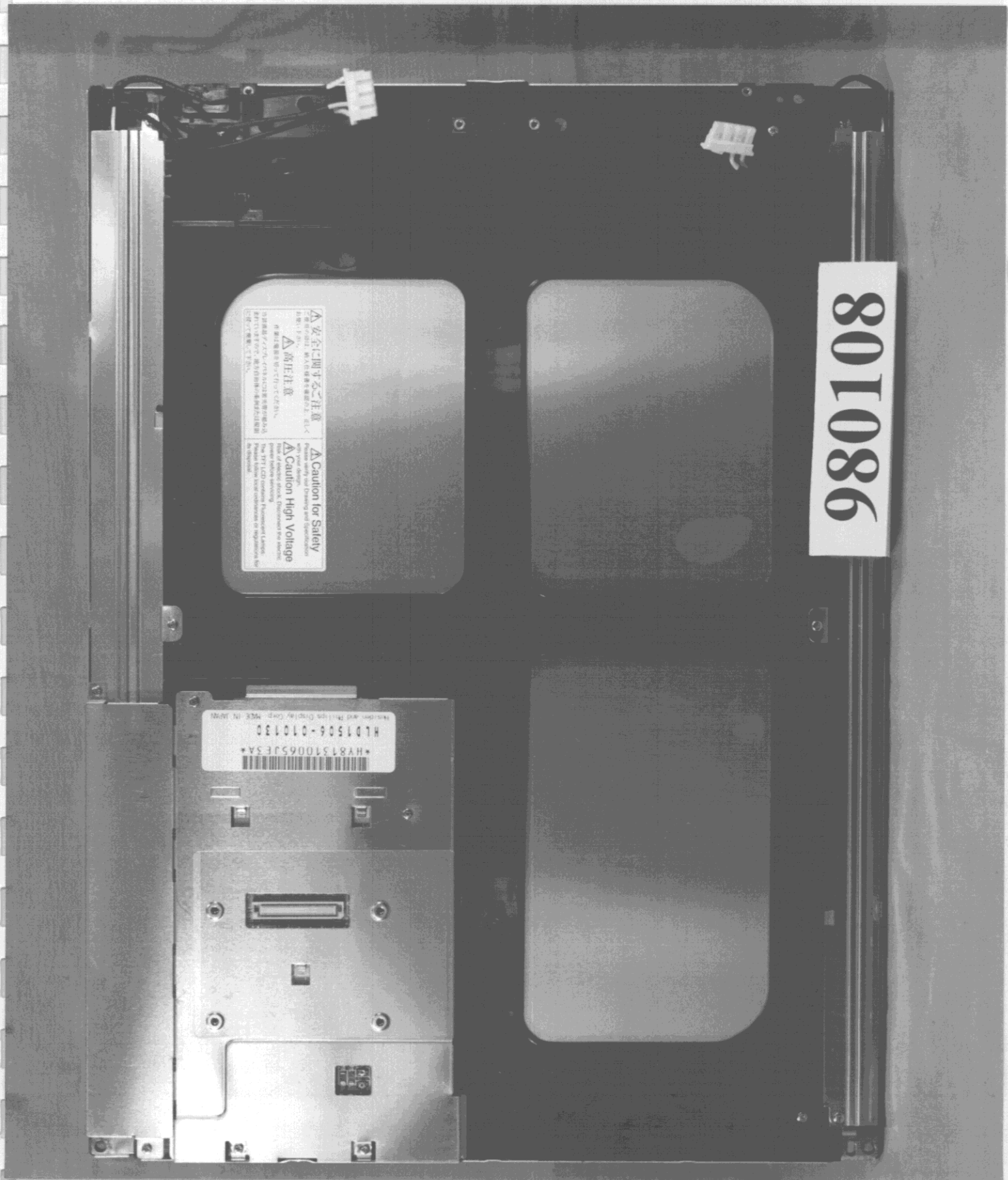


980108

## The Front View of LCD Panel



### The Back View of LCD Panel



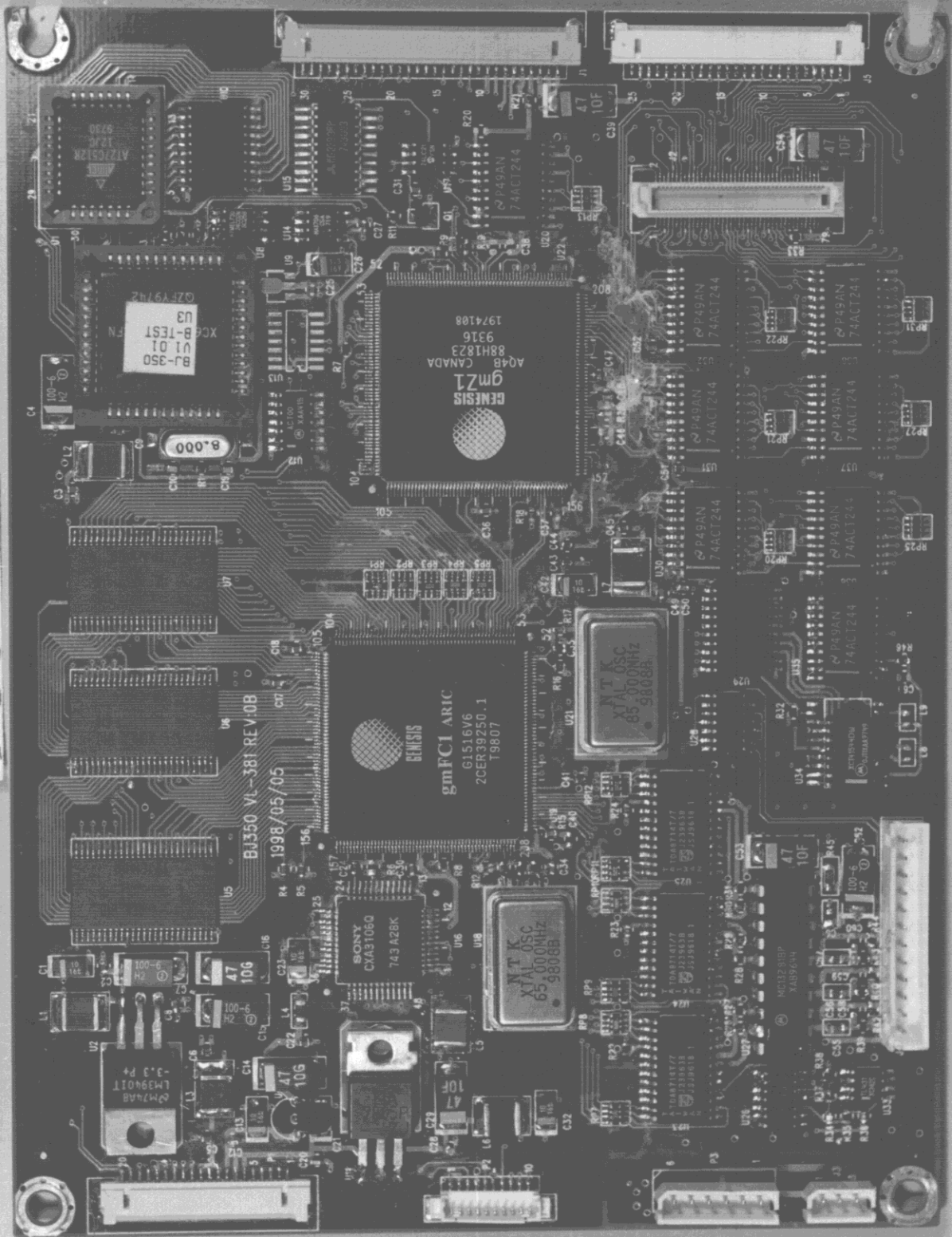
安全に関する注意  
警告：本製品は高電圧部品を有し、  
修理作業を行う際には必ず電源を切断し、  
静電気を除去してください。  
高圧注意  
修理作業を行う際は必ず電源を切断し、  
静電気を除去してください。  
The TFT LCD contains Permanent Lamp  
Please follow the instructions for operation  
and maintenance.  
Caution for Safety  
Please refer to the following instructions for safety.  
Caution High Voltage

HY81310065JE3A\*  
H01506-010130  
\*HY81310065JE3A\*  
H01506-010130  
\*HY81310065JE3A\*  
H01506-010130  
\*HY81310065JE3A\*

980108

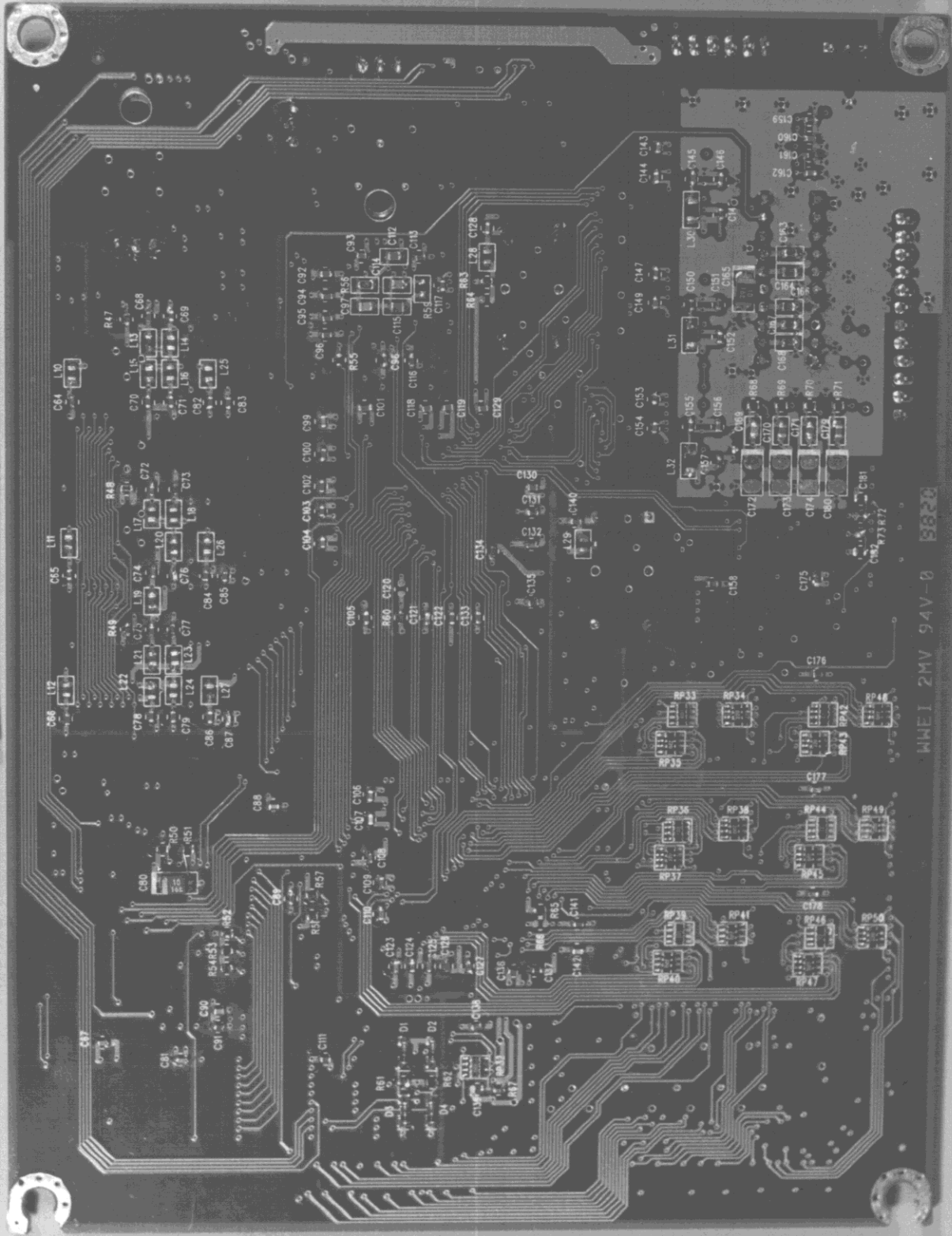
# The Front View of Main Board

980108



# The Back View of Main Board

980108

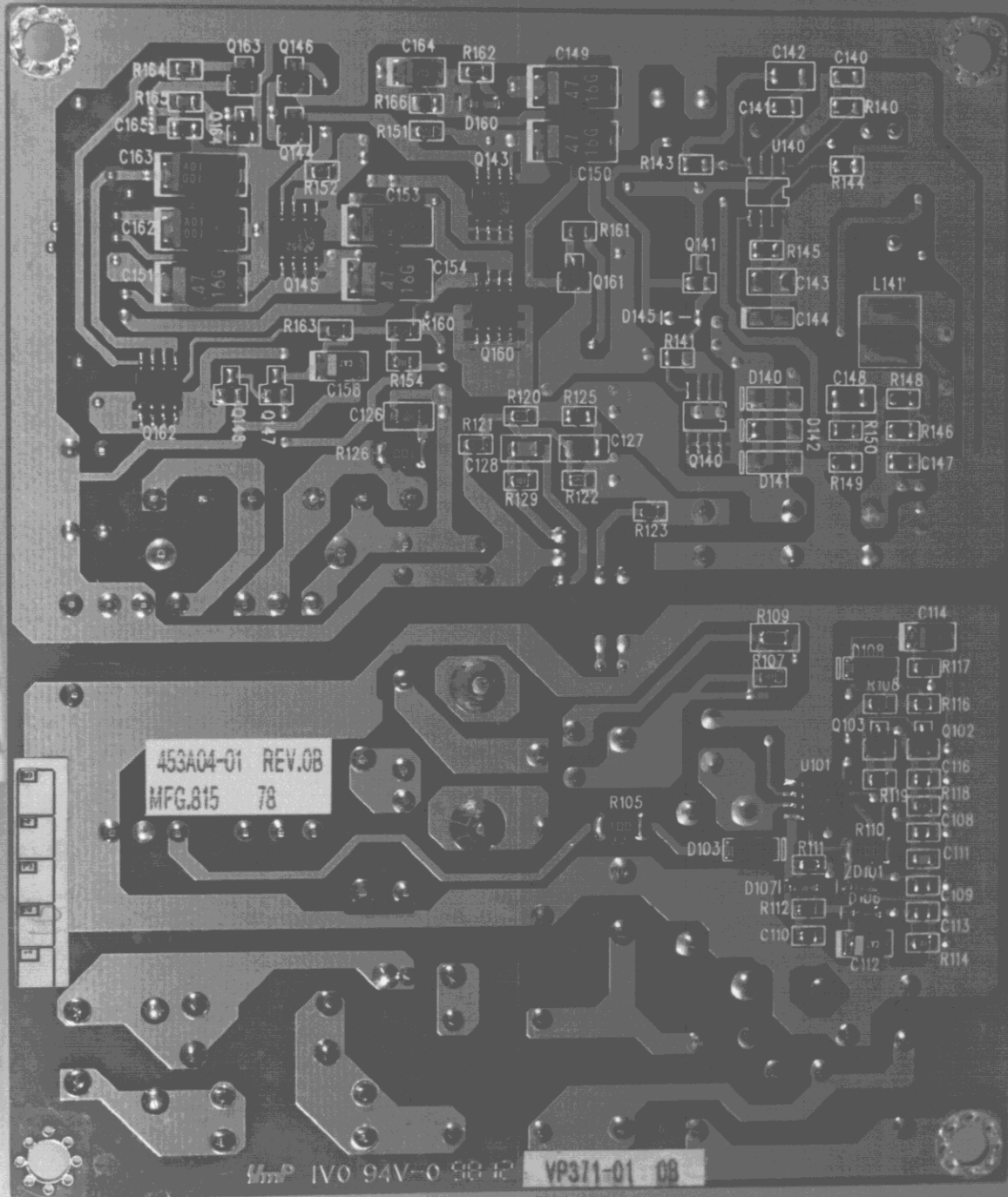


WHEI 2MV 94V-0 B620

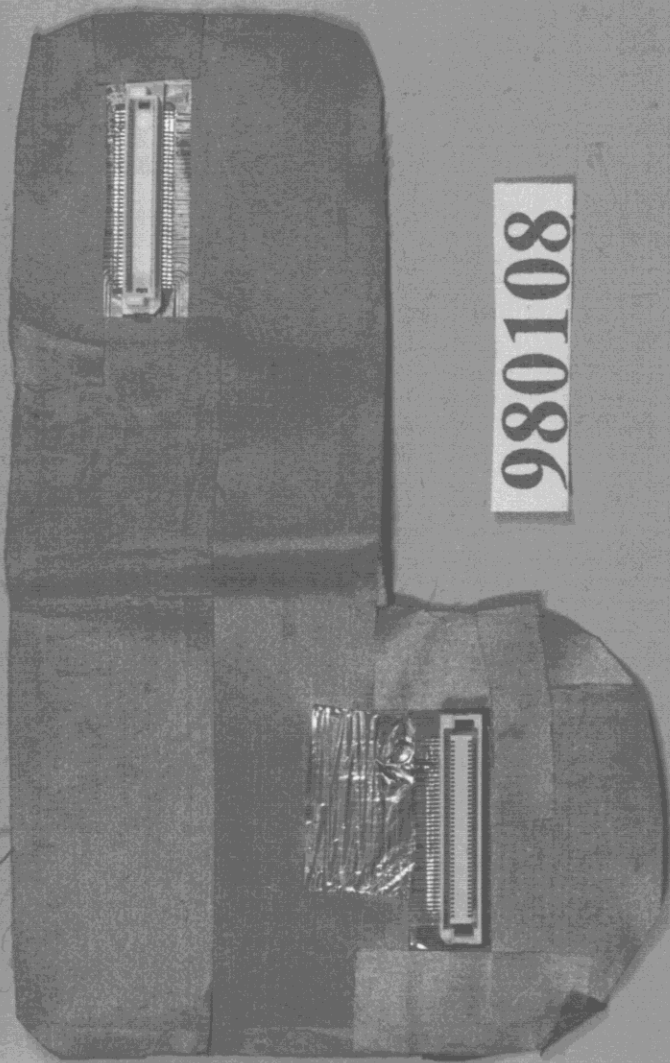




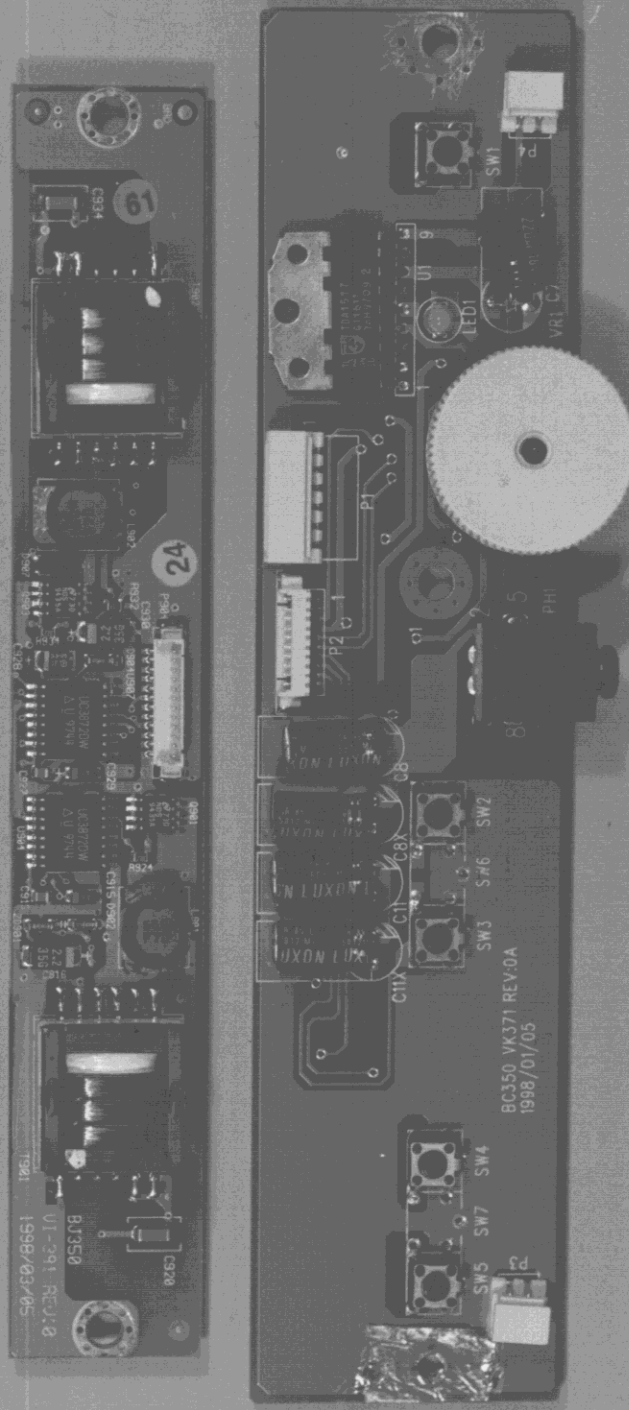
### The Back View of Power Board



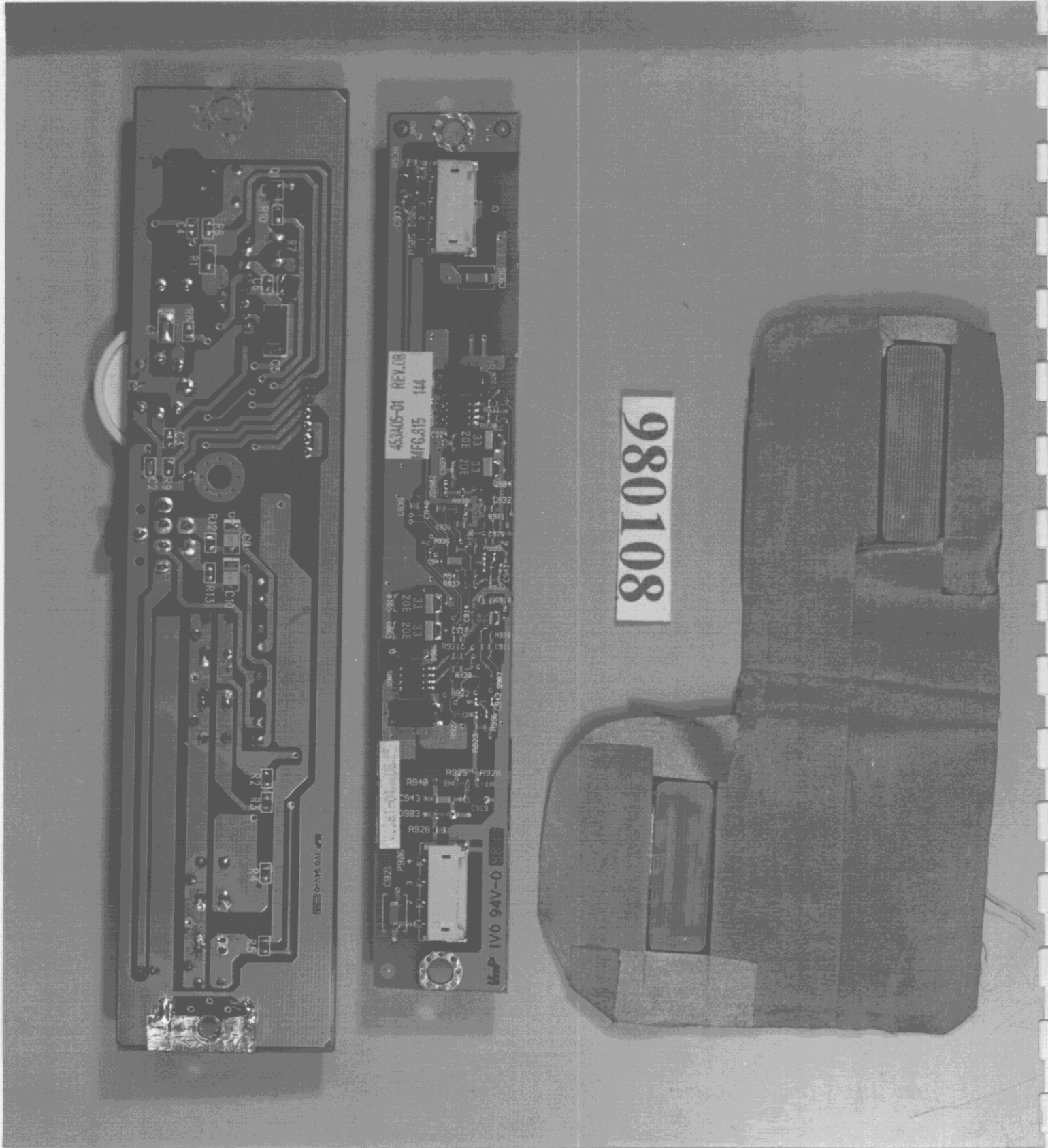
# The Front View of Inverter



980108



**The Back View of Inverter**



Accredited Lab. of NEMKO, A2LA  
Listed Lab. of FCC, VCC, MOC

A2LA Certificate #: 824.01 (For Emission)  
NEMKO Authorization #: ELA 124 (for EMC)