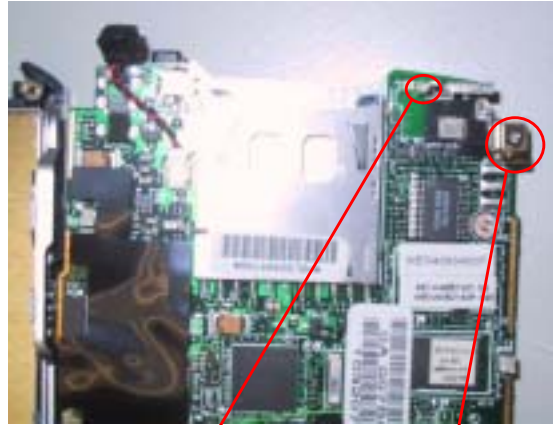
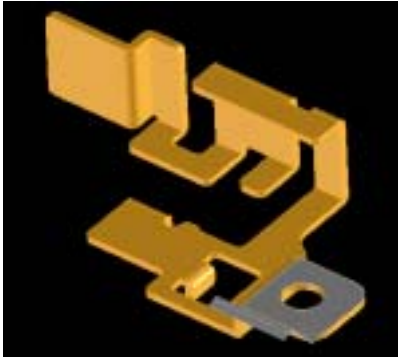


Project: P12L PDA report example
 Supplier: Wistron NeWeb coporation

Date: 2004/6/15
 PIC: Tommy cheng

Config.	Sample 1: 1. Antenna type: IFA 2. Antenna dimension: L= 17.7mm, W= 6.0mm, H= 11.84mm 3. Cable: diameter=0.81mm, 4. Test setup: in P12L PDA
----------------	--



Sample dimension picture

Antenna spec

a. Average gain and peak gain

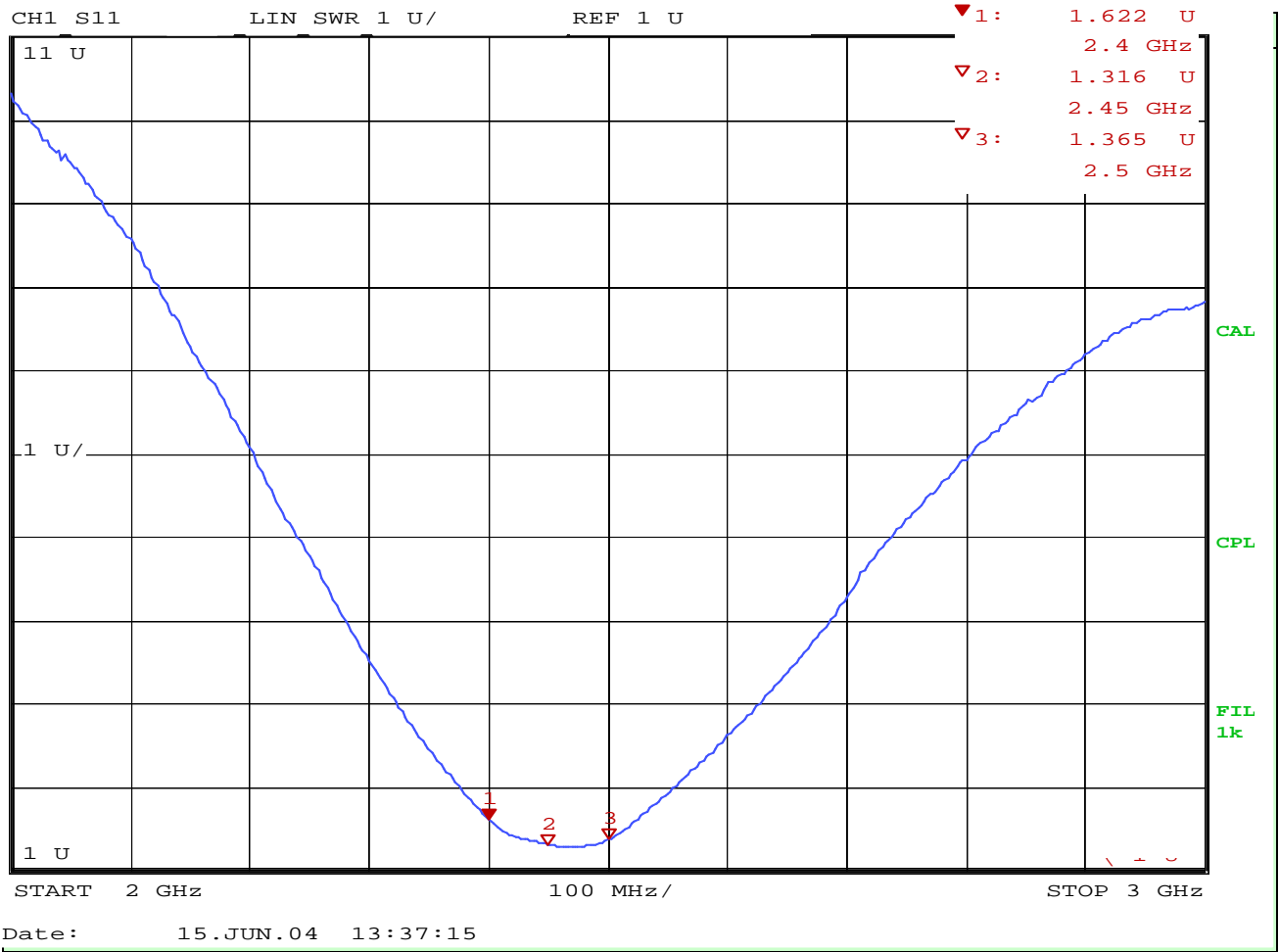
	Average Gain (dBi)			Peak Gain (dBi)		
Frequency	2.4GH	2.45GH	2.5GH	2.4GH	2.45GH	2.5GH
WLAN	-4	-4	-4	3	3	3

b. VSWR 2 from 2.4 to 2.5

Antenna VSWR			
	Sample 1		
	2.40	2.45	2.50
in P12L PDA	1.62	1.31	1.36

Project: P12L PDA report example
Supplier: Wistron NeWeb coporation

Date: 2004/6/15
PIC: Tommy cheng



Antenna Gain with cable loss				
@GHz		Sample 1		
		2.40	2.45	2.50
0 degree	Peak Gain	2.76	1.89	1.28
	Average Gain	-1.73	-2.53	-2.99
45 degree	Peak Gain	1.39	1.05	0.15
	Average Gain	-1.99	-2.49	-2.47
90 degree	Peak Gain	1.96	1.44	1.76
	Average Gain	-2.11	-2.20	-2.27

