

## 20150112\_System check\_Diple5GHzv2 SN1004

Frequency: 5200 MHz; Duty Cycle: 1:1; Room Ambient Temperature: 24.5°C; Liquid Temperature: 24.0°C

Medium parameters used (interpolated):  $f = 5200$  MHz;  $\sigma = 5.277$  S/m;  $\epsilon_r = 50.229$ ;  $\rho = 1000$  kg/m<sup>3</sup>

DASY5 Configuration:

- Area Scan Setting - Find Secondary Maximum Within: 2.0 dB and with a peak SAR value greater than 0.0012W/kg
- Electronics: DAE4 Sn877; Calibrated: 2014/03/26
- Probe: EX3DV4 - SN3665; ConvF(4.43, 4.43, 4.43); Calibrated: 2014/05/22;
- Sensor-Surface: 1.4mm (Mechanical Surface Detection)
- Phantom: ELI 4.0; Type: QDOVA001BA; Serial: 1056

**Body/5200MHz,Pin=100mW,d=10mm/Area Scan (7x7x1):** Measurement grid: dx=10mm, dy=10mm

[Info: Interpolated medium parameters used for SAR evaluation.](#)

Maximum value of SAR (measured) = 17.5 W/kg

**Body/5200MHz,Pin=100mW,d=10mm/Zoom Scan (7x7x6)/Cube 0:** Measurement grid: dx=4mm, dy=4mm, dz=1.4mm

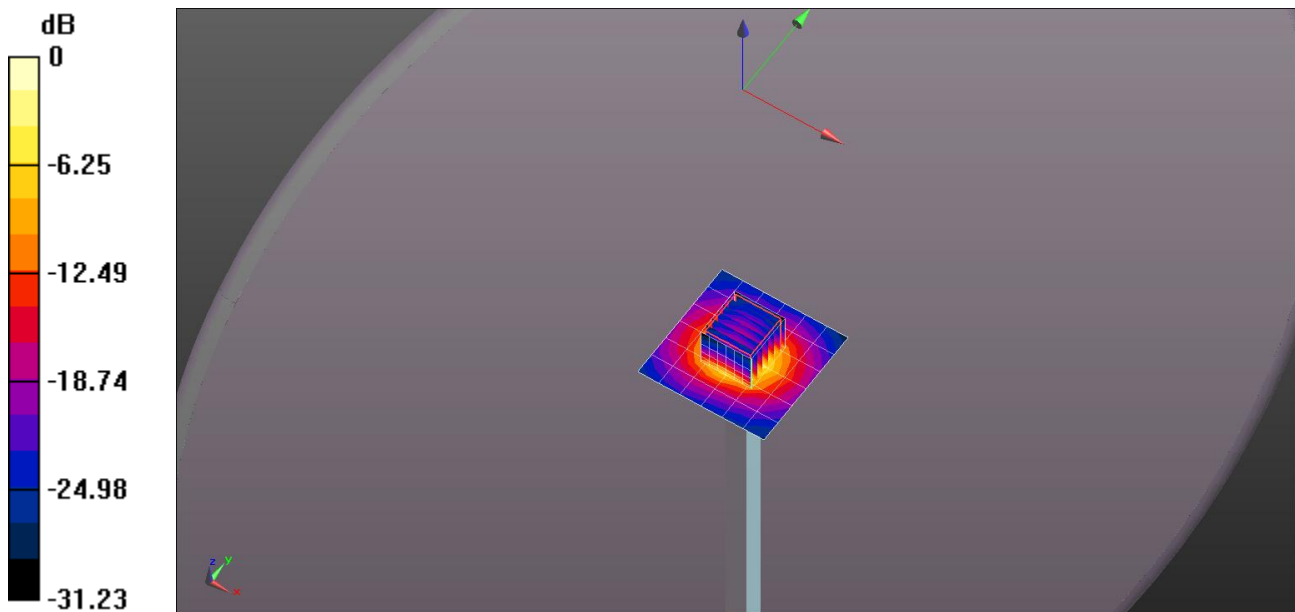
Reference Value = 39.91 V/m; Power Drift = 0.05 dB

Peak SAR (extrapolated) = 29.3 W/kg

**SAR(1 g) = 7.47 W/kg; SAR(10 g) = 2.15 W/kg**

[Info: Interpolated medium parameters used for SAR evaluation.](#)

Maximum value of SAR (measured) = 19.2 W/kg



0 dB = 19.2 W/kg = 12.83 dBW/kg

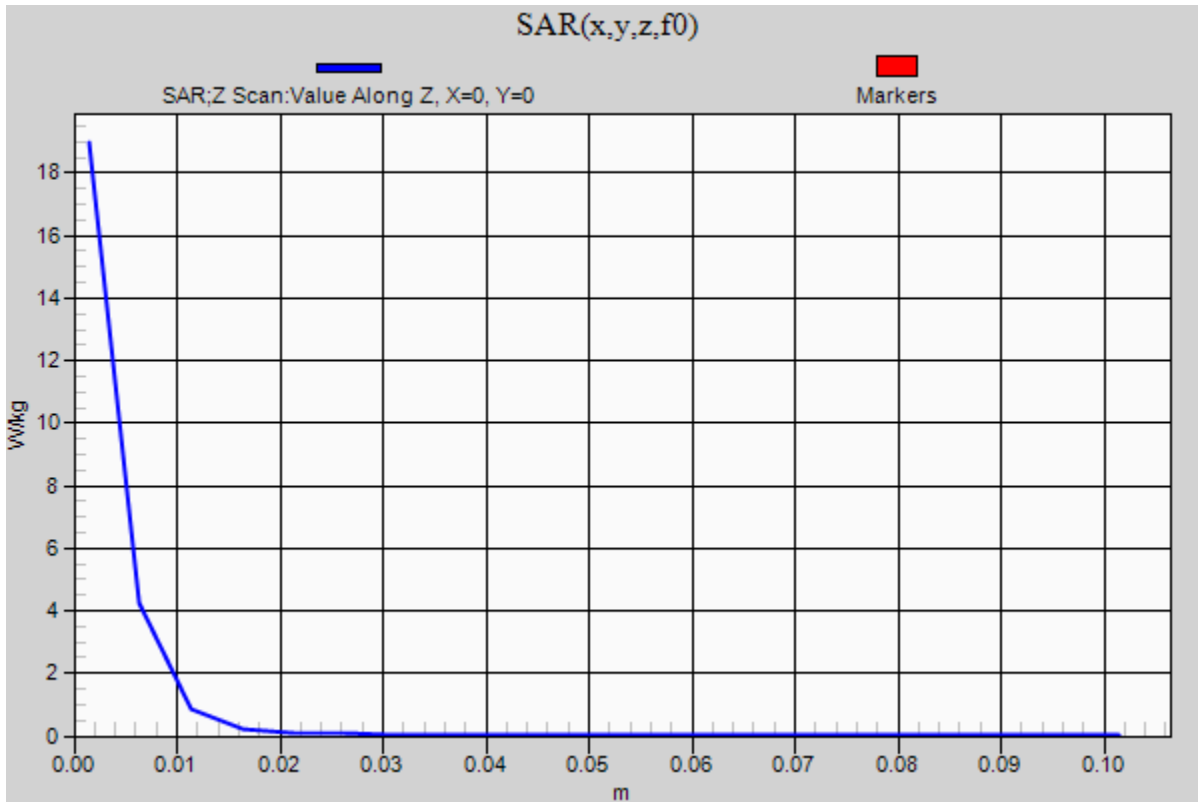
### 20150112\_System check\_Diple5GHzv2 SN1004

Frequency: 5200 MHz; Duty Cycle: 1:1

**Body/5200MHz,Pin=100mW,d=10mm/Z Scan (1x1x21):** Measurement grid: dx=20mm, dy=20mm, dz=5mm

Info: [Interpolated medium parameters used for SAR evaluation.](#)

Maximum value of SAR (measured) = 19.0 W/kg



## 20150112\_System check\_Diple5GHzv2 SN1004

Frequency: 5300 MHz; Duty Cycle: 1:1; Room Ambient Temperature: 24.5°C; Liquid Temperature: 24.0°C

Medium parameters used:  $f = 5300.2 \text{ MHz}$ ;  $\sigma = 5.403 \text{ S/m}$ ;  $\epsilon_r = 50.297$ ;  $\rho = 1000 \text{ kg/m}^3$

DASY5 Configuration:

- Area Scan Setting - Find Secondary Maximum Within: 2.0 dB and with a peak SAR value greater than 0.0012W/kg
- Electronics: DAE4 Sn877; Calibrated: 2014/03/26
- Probe: EX3DV4 - SN3665; ConvF(4.23, 4.23, 4.23); Calibrated: 2014/05/22;
- Sensor-Surface: 1.4mm (Mechanical Surface Detection)
- Phantom: ELI 4.0; Type: QDOVA001BA; Serial: 1056

**Body/5300MHz,Pin=100mW,d=10mm/Area Scan (7x7x1):** Measurement grid: dx=10mm, dy=10mm

Maximum value of SAR (measured) = 19.7 W/kg

**Body/5300MHz,Pin=100mW,d=10mm/Zoom Scan (7x7x6)/Cube 0:** Measurement grid: dx=4mm,

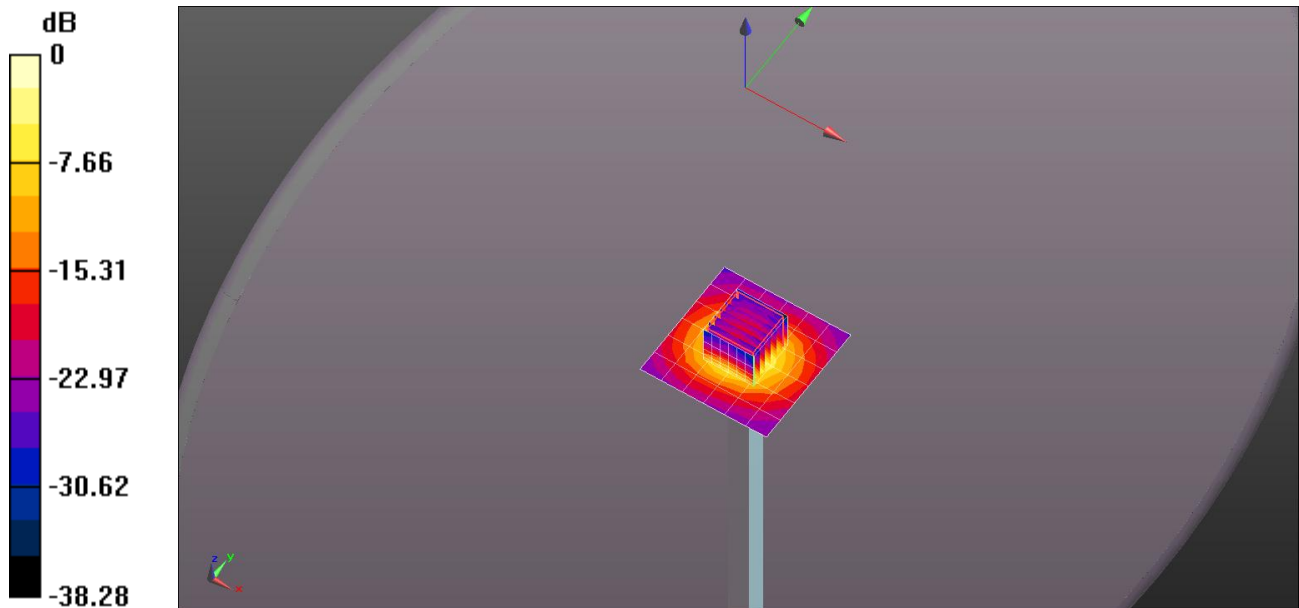
dy=4mm, dz=1.4mm

Reference Value = 41.26 V/m; Power Drift = -0.04 dB

Peak SAR (extrapolated) = 30.8 W/kg

**SAR(1 g) = 7.63 W/kg; SAR(10 g) = 2.18 W/kg**

Maximum value of SAR (measured) = 19.8 W/kg



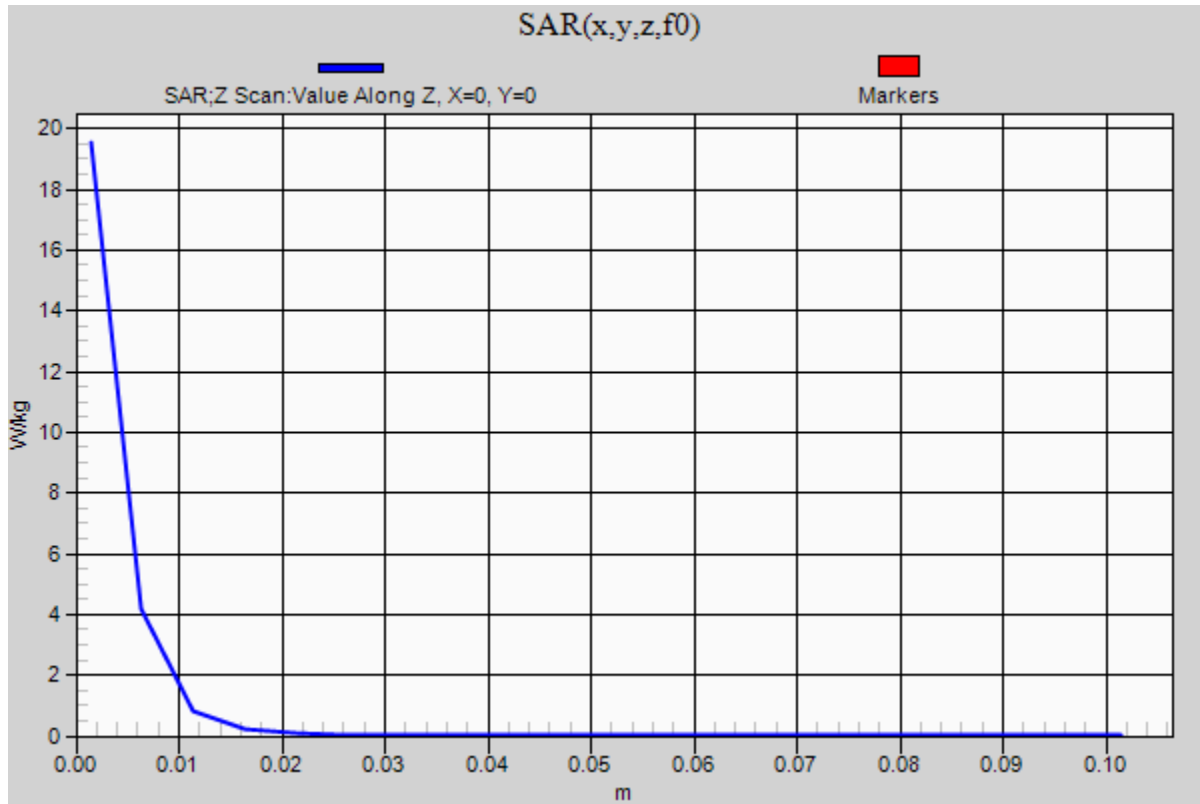
0 dB = 19.8 W/kg = 12.97 dBW/kg

### 20150112\_System check\_Diple5GHzv2 SN1004

Frequency: 5300 MHz; Duty Cycle: 1:1

**Body/5300MHz,Pin=100mW,d=10mm/Z Scan (1x1x21):** Measurement grid: dx=20mm, dy=20mm, dz=5mm

Maximum value of SAR (measured) = 19.5 W/kg



## 20150112\_System check\_Diple5GHzv2 SN1004

Frequency: 5600 MHz; Duty Cycle: 1:1; Room Ambient Temperature: 24.5°C; Liquid Temperature: 24.0°C

Medium parameters used:  $f = 5600.5$  MHz;  $\sigma = 5.845$  S/m;  $\epsilon_r = 49.74$ ;  $\rho = 1000$  kg/m<sup>3</sup>

DASY5 Configuration:

- Area Scan Setting - Find Secondary Maximum Within: 2.0 dB and with a peak SAR value greater than 0.0012W/kg
- Electronics: DAE4 Sn877; Calibrated: 2014/03/26
- Probe: EX3DV4 - SN3665; ConvF(3.82, 3.82, 3.82); Calibrated: 2014/05/22;
- Sensor-Surface: 1.4mm (Mechanical Surface Detection)
- Phantom: ELI 4.0; Type: QDOVA001BA; Serial: 1056

**Body/5600MHz,Pin=100mW,d=10mm/Area Scan (7x7x1):** Measurement grid: dx=10mm, dy=10mm

Maximum value of SAR (measured) = 21.2 W/kg

**Body/5600MHz,Pin=100mW,d=10mm/Zoom Scan (7x7x6)/Cube 0:** Measurement grid: dx=4mm,

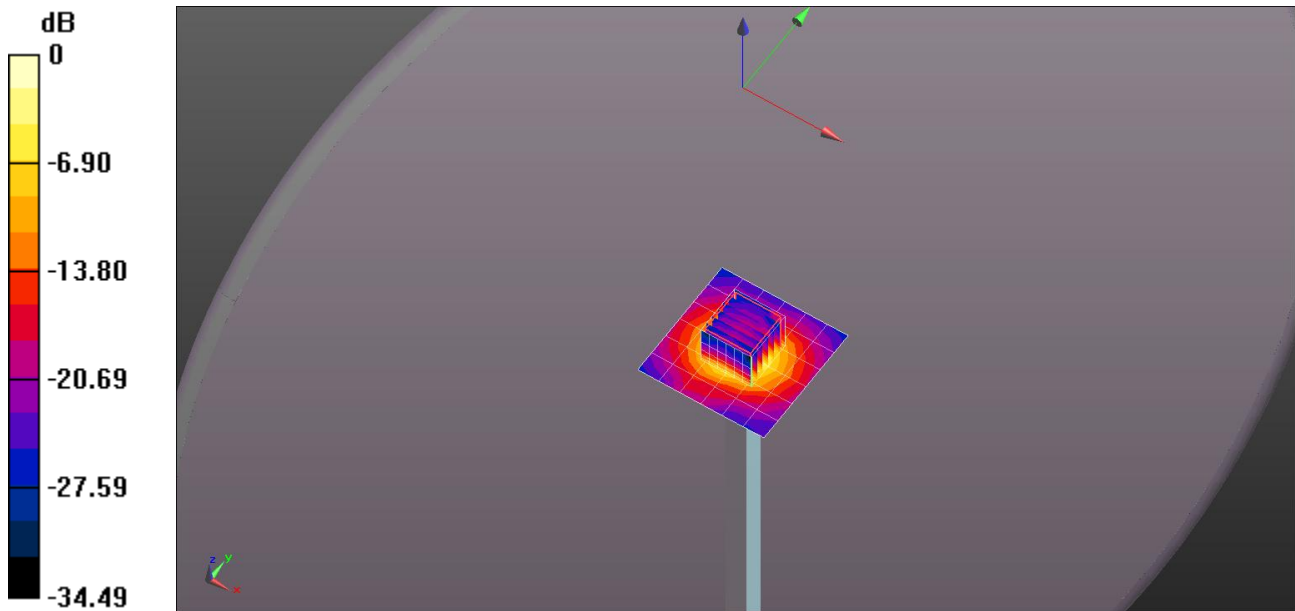
dy=4mm, dz=1.4mm

Reference Value = 40.45 V/m; Power Drift = -0.09 dB

Peak SAR (extrapolated) = 33.4 W/kg

**SAR(1 g) = 8 W/kg; SAR(10 g) = 2.3 W/kg**

Maximum value of SAR (measured) = 21.0 W/kg



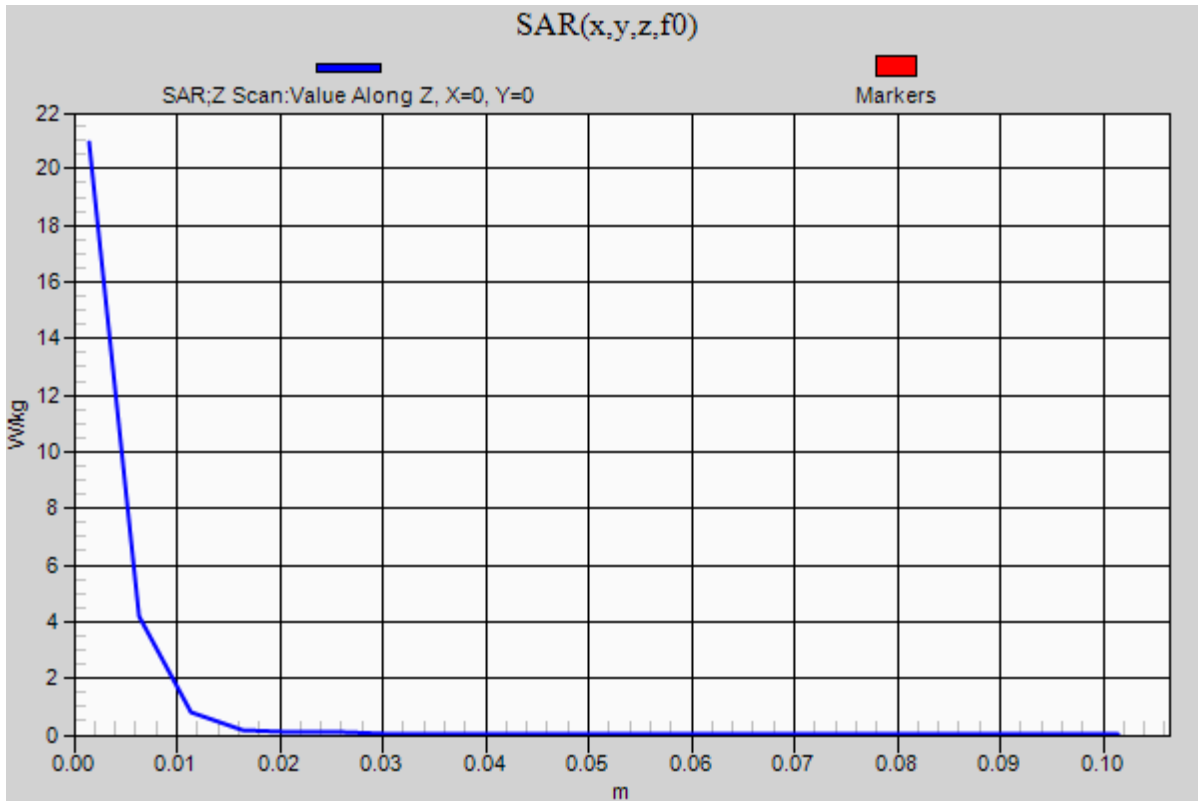
0 dB = 21.0 W/kg = 13.22 dBW/kg

### 20150112\_System check\_Diple5GHzv2 SN1004

Frequency: 5600 MHz; Duty Cycle: 1:1

**Body/5600MHz,Pin=100mW,d=10mm/Z Scan (1x1x21):** Measurement grid: dx=20mm, dy=20mm, dz=5mm

Maximum value of SAR (measured) = 20.9 W/kg



## 20150112\_System check\_Diple5GHzv2 SN1004

Frequency: 5800 MHz; Duty Cycle: 1:1; Room Ambient Temperature: 24.5°C; Liquid Temperature: 24.0°C

Medium parameters used (interpolated):  $f = 5800$  MHz;  $\sigma = 6.046$  S/m;  $\epsilon_r = 49.332$ ;  $\rho = 1000$  kg/m<sup>3</sup>

DASY5 Configuration:

- Area Scan Setting - Find Secondary Maximum Within: 2.0 dB and with a peak SAR value greater than 0.0012W/kg
- Electronics: DAE4 Sn877; Calibrated: 2014/03/26
- Probe: EX3DV4 - SN3665; ConvF(4.22, 4.22, 4.22); Calibrated: 2014/05/22;
- Sensor-Surface: 1.4mm (Mechanical Surface Detection)
- Phantom: ELI 4.0; Type: QDOVA001BA; Serial: 1056

**Body/5800MHz,Pin=100mW,d=10mm/Area Scan (7x7x1):** Measurement grid: dx=10mm, dy=10mm

[Info: Interpolated medium parameters used for SAR evaluation.](#)

Maximum value of SAR (measured) = 21.4 W/kg

**Body/5800MHz,Pin=100mW,d=10mm/Zoom Scan (7x7x6)/Cube 0:** Measurement grid: dx=4mm, dy=4mm, dz=1.4mm

Reference Value = 39.68 V/m; Power Drift = -0.01 dB

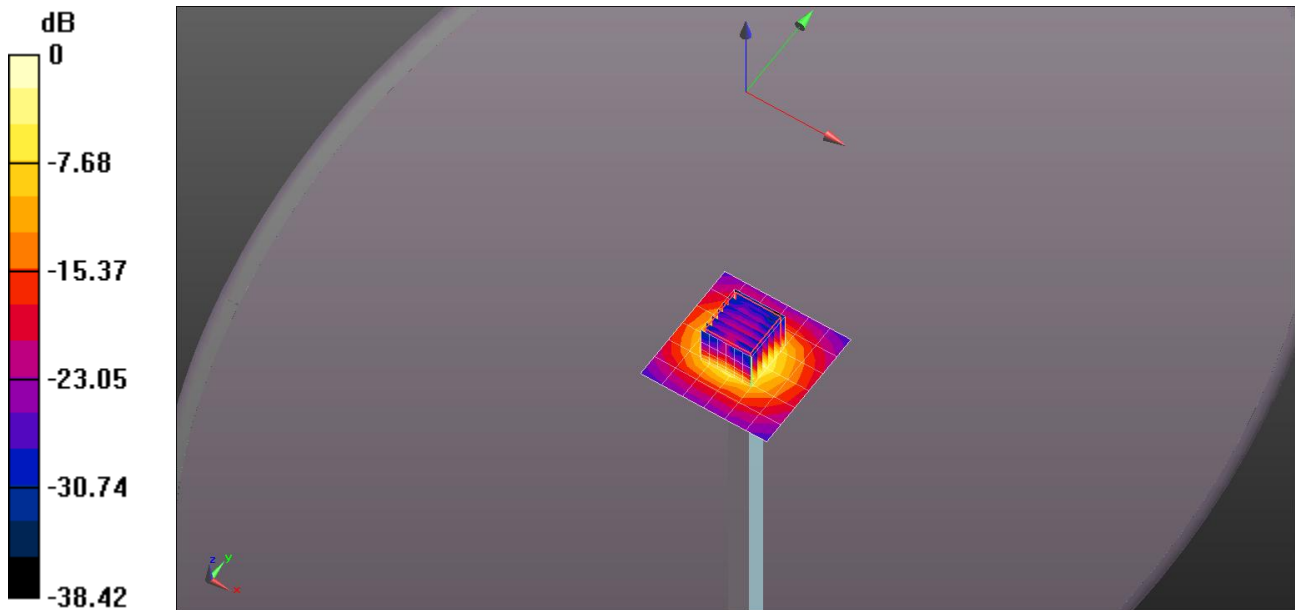
Peak SAR (extrapolated) = 33.1 W/kg

Peak SAR (extrapolated) = 33.1 W/kg

**SAR(1 g) = 7.45 W/kg; SAR(10 g) = 2.12 W/kg**

[Info: Interpolated medium parameters used for SAR evaluation.](#)

Maximum value of SAR (measured) = 19.8 W/kg



0 dB = 19.8 W/kg = 12.97 dBW/kg

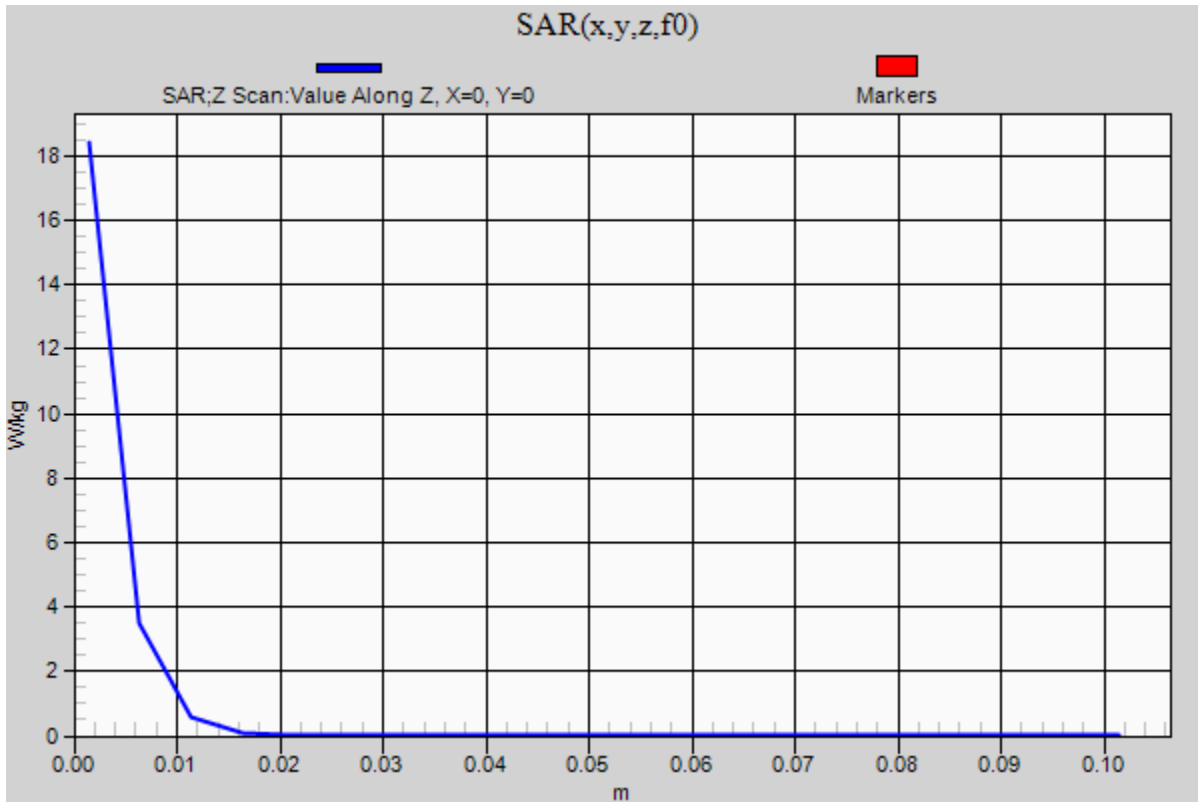
### 20150112\_System check\_Diple5GHzv2 SN1004

Frequency: 5800 MHz; Duty Cycle: 1:1

**Body/5800MHz,Pin=100mW,d=10mm/Z Scan (1x1x21):** Measurement grid: dx=20mm, dy=20mm, dz=5mm

Info: [Interpolated medium parameters used for SAR evaluation.](#)

Maximum value of SAR (measured) = 18.4 W/kg





## 20150113\_System check\_Diple5GHzv2 SN1004

Frequency: 5200 MHz; Duty Cycle: 1:1; Room Ambient Temperature: 24.5°C; Liquid Temperature: 24.0°C

Medium parameters used (interpolated):  $f = 5200$  MHz;  $\sigma = 5.421$  S/m;  $\epsilon_r = 49.96$ ;  $\rho = 1000$  kg/m<sup>3</sup>

DASY5 Configuration:

- Area Scan Setting - Find Secondary Maximum Within: 2.0 dB and with a peak SAR value greater than 0.0012W/kg
- Electronics: DAE4 Sn877; Calibrated: 2014/03/26
- Probe: EX3DV4 - SN3665; ConvF(4.43, 4.43, 4.43); Calibrated: 2014/05/22;
- Sensor-Surface: 1.4mm (Mechanical Surface Detection)
- Phantom: ELI 4.0; Type: QDOVA001BA; Serial: 1056

**Body/5200MHz,Pin=100mW,d=10mm/Area Scan (7x7x1):** Measurement grid: dx=10mm, dy=10mm

[Info: Interpolated medium parameters used for SAR evaluation.](#)

Maximum value of SAR (measured) = 17.2 W/kg

**Body/5200MHz,Pin=100mW,d=10mm/Zoom Scan (7x7x6)/Cube 0:** Measurement grid: dx=4mm, dy=4mm, dz=1.4mm

Reference Value = 40.22 V/m; Power Drift = 0.06 dB

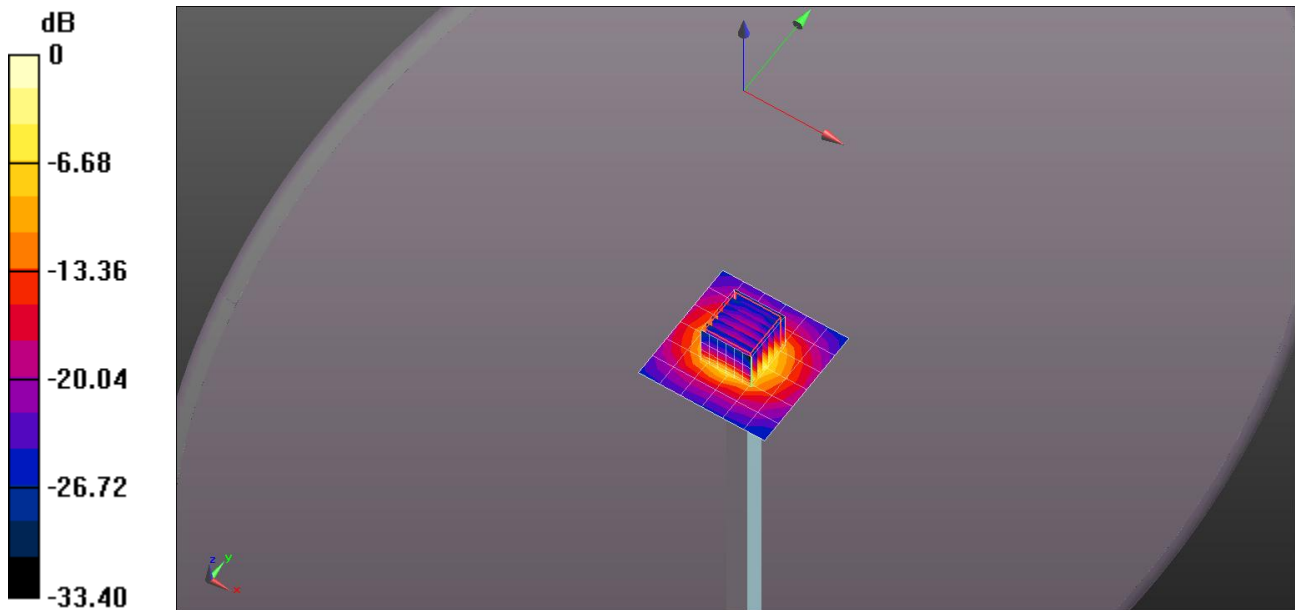
Peak SAR (extrapolated) = 26.8 W/kg

Peak SAR (extrapolated) = 26.8 W/kg

**SAR(1 g) = 7.26 W/kg; SAR(10 g) = 2.13 W/kg**

[Info: Interpolated medium parameters used for SAR evaluation.](#)

Maximum value of SAR (measured) = 18.3 W/kg



0 dB = 18.3 W/kg = 12.62 dBW/kg

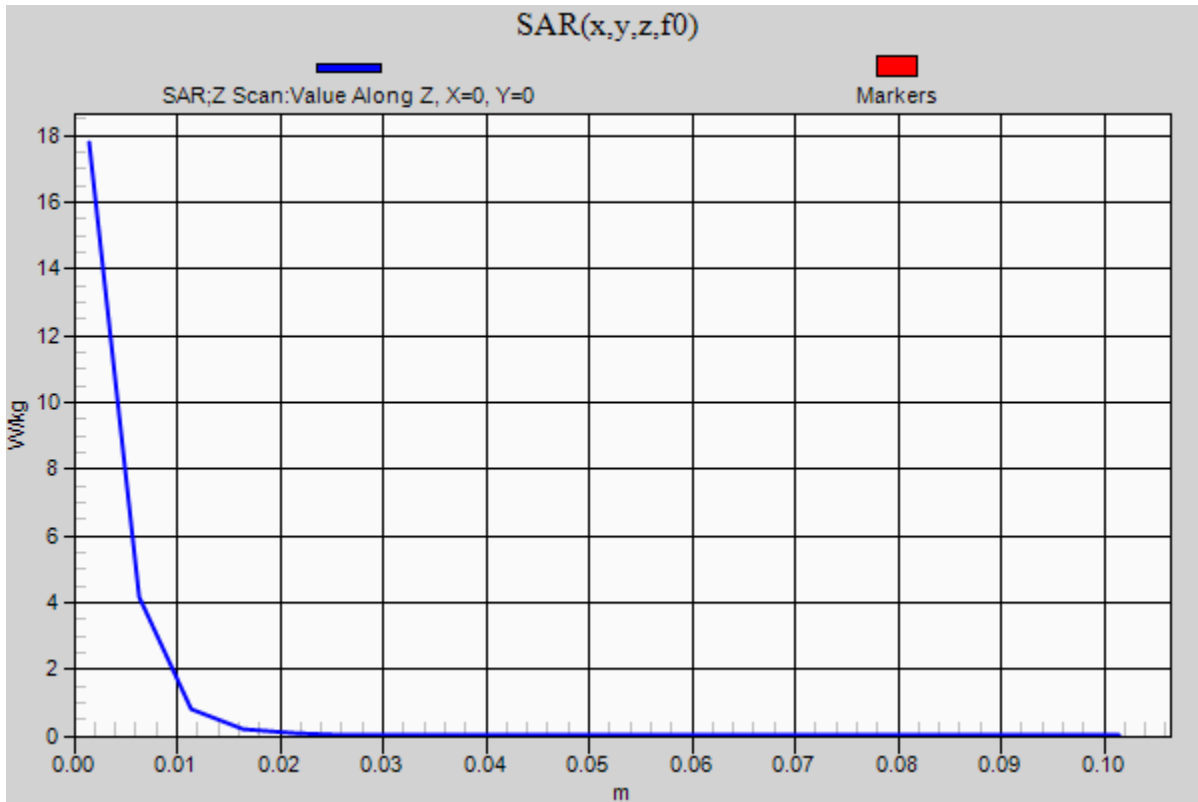
### 20150113\_System check\_Diple5GHzv2 SN1004

Frequency: 5200 MHz; Duty Cycle: 1:1

**Body/5200MHz,Pin=100mW,d=10mm/Z Scan (1x1x21):** Measurement grid: dx=20mm, dy=20mm, dz=5mm

Info: [Interpolated medium parameters used for SAR evaluation.](#)

Maximum value of SAR (measured) = 17.8 W/kg



## 20150113\_System check\_Diple5GHzv2 SN1004

Frequency: 5300 MHz; Duty Cycle: 1:1; Room Ambient Temperature: 24.5°C; Liquid Temperature: 24.0°C

Medium parameters used:  $f = 5300.2 \text{ MHz}$ ;  $\sigma = 5.565 \text{ S/m}$ ;  $\epsilon_r = 49.776$ ;  $\rho = 1000 \text{ kg/m}^3$

DASY5 Configuration:

- Area Scan Setting - Find Secondary Maximum Within: 2.0 dB and with a peak SAR value greater than 0.0012W/kg
- Electronics: DAE4 Sn877; Calibrated: 2014/03/26
- Probe: EX3DV4 - SN3665; ConvF(4.23, 4.23, 4.23); Calibrated: 2014/05/22;
- Sensor-Surface: 1.4mm (Mechanical Surface Detection)
- Phantom: ELI 4.0; Type: QDOVA001BA; Serial: 1056

**Body/5300MHz,Pin=100mW,d=10mm/Area Scan (7x7x1):** Measurement grid: dx=10mm, dy=10mm

Maximum value of SAR (measured) = 20.2 W/kg

**Body/5300MHz,Pin=100mW,d=10mm/Zoom Scan (7x7x6)/Cube 0:** Measurement grid: dx=4mm,

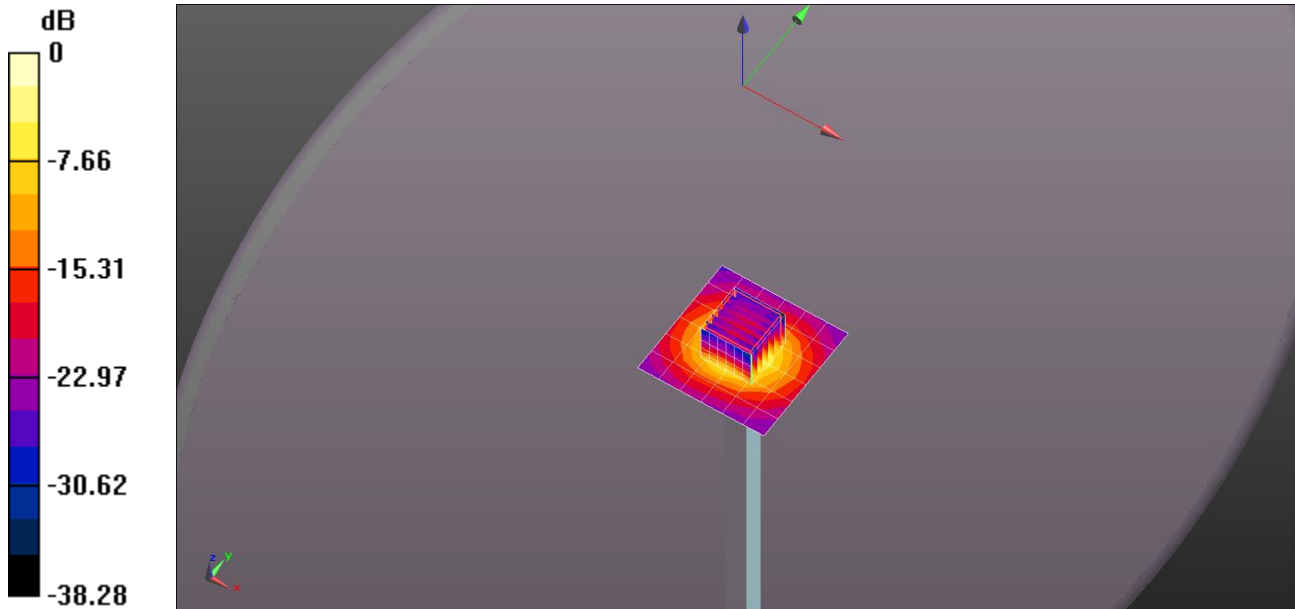
dy=4mm, dz=1.4mm

Reference Value = 41.26 V/m; Power Drift = -0.04 dB

Peak SAR (extrapolated) = 31.8 W/kg

**SAR(1 g) = 7.86 W/kg; SAR(10 g) = 2.25 W/kg**

Maximum value of SAR (measured) = 20.4 W/kg



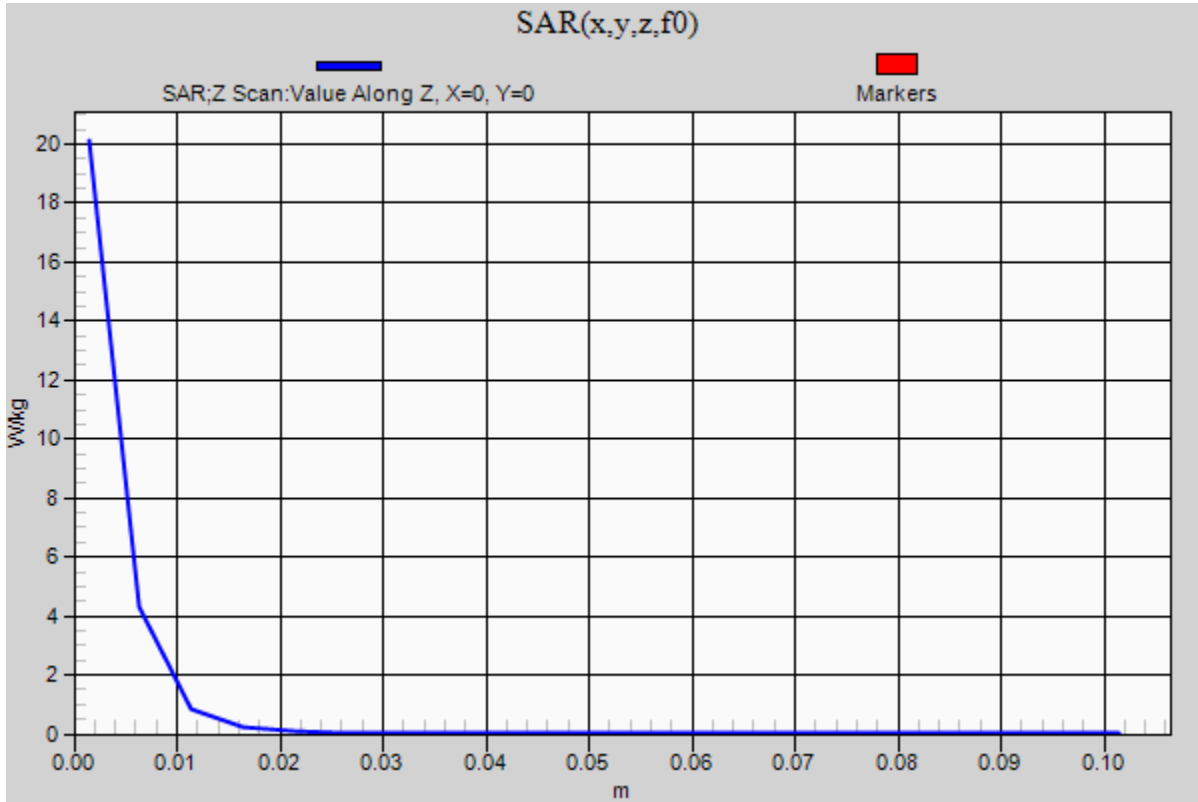
0 dB = 20.4 W/kg = 13.10 dBW/kg

### 20150113\_System check\_Diple5GHzv2 SN1004

Frequency: 5300 MHz; Duty Cycle: 1:1

**Body/5300MHz,Pin=100mW,d=10mm/Z Scan (1x1x21):** Measurement grid: dx=20mm, dy=20mm, dz=5mm

Maximum value of SAR (measured) = 20.1 W/kg



## 20150113\_System check\_Diple5GHzv2 SN1004

Frequency: 5600 MHz; Duty Cycle: 1:1; Room Ambient Temperature: 24.5°C; Liquid Temperature: 24.0°C

Medium parameters used:  $f = 5600.5 \text{ MHz}$ ;  $\sigma = 5.963 \text{ S/m}$ ;  $\epsilon_r = 49.191$ ;  $\rho = 1000 \text{ kg/m}^3$

DASY5 Configuration:

- Area Scan Setting - Find Secondary Maximum Within: 2.0 dB and with a peak SAR value greater than 0.0012W/kg
- Electronics: DAE4 Sn877; Calibrated: 2014/03/26
- Probe: EX3DV4 - SN3665; ConvF(3.82, 3.82, 3.82); Calibrated: 2014/05/22;
- Sensor-Surface: 1.4mm (Mechanical Surface Detection)
- Phantom: ELI 4.0; Type: QDOVA001BA; Serial: 1056

**Body/5600MHz,Pin=100mW,d=10mm/Area Scan (7x7x1):** Measurement grid: dx=10mm, dy=10mm

Maximum value of SAR (measured) = 21.7 W/kg

**Body/5600MHz,Pin=100mW,d=10mm/Zoom Scan (7x7x6)/Cube 0:** Measurement grid: dx=4mm,

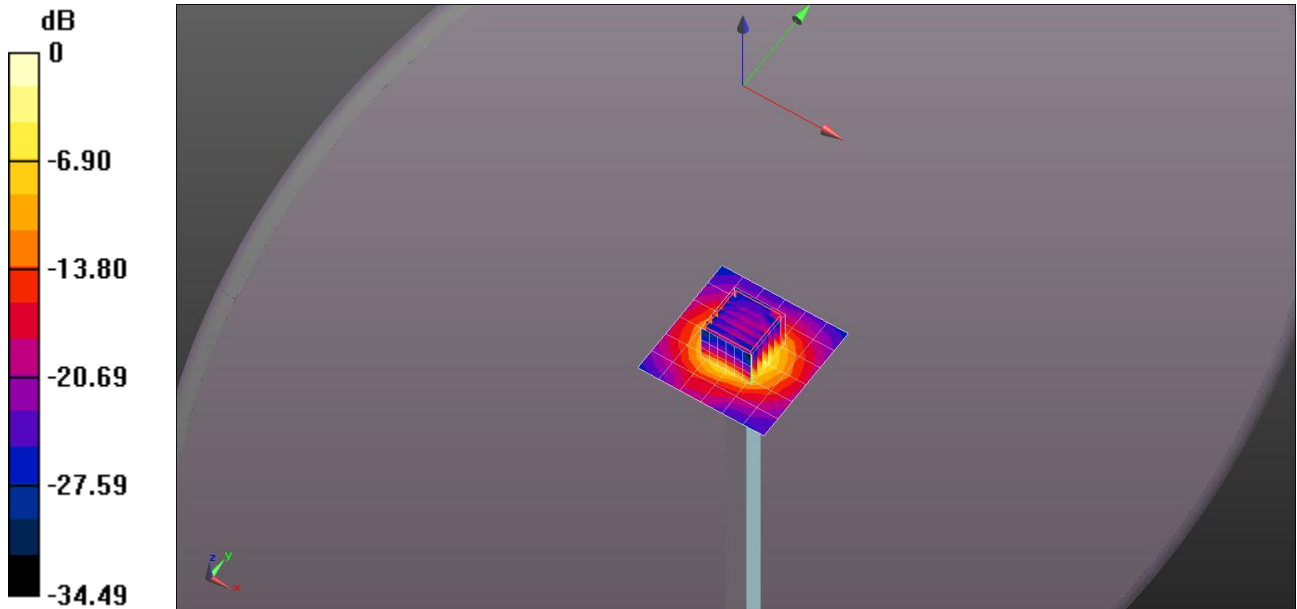
dy=4mm, dz=1.4mm

Reference Value = 40.45 V/m; Power Drift = -0.09 dB

Peak SAR (extrapolated) = 34.1 W/kg

**SAR(1 g) = 8.16 W/kg; SAR(10 g) = 2.34 W/kg**

Maximum value of SAR (measured) = 21.4 W/kg



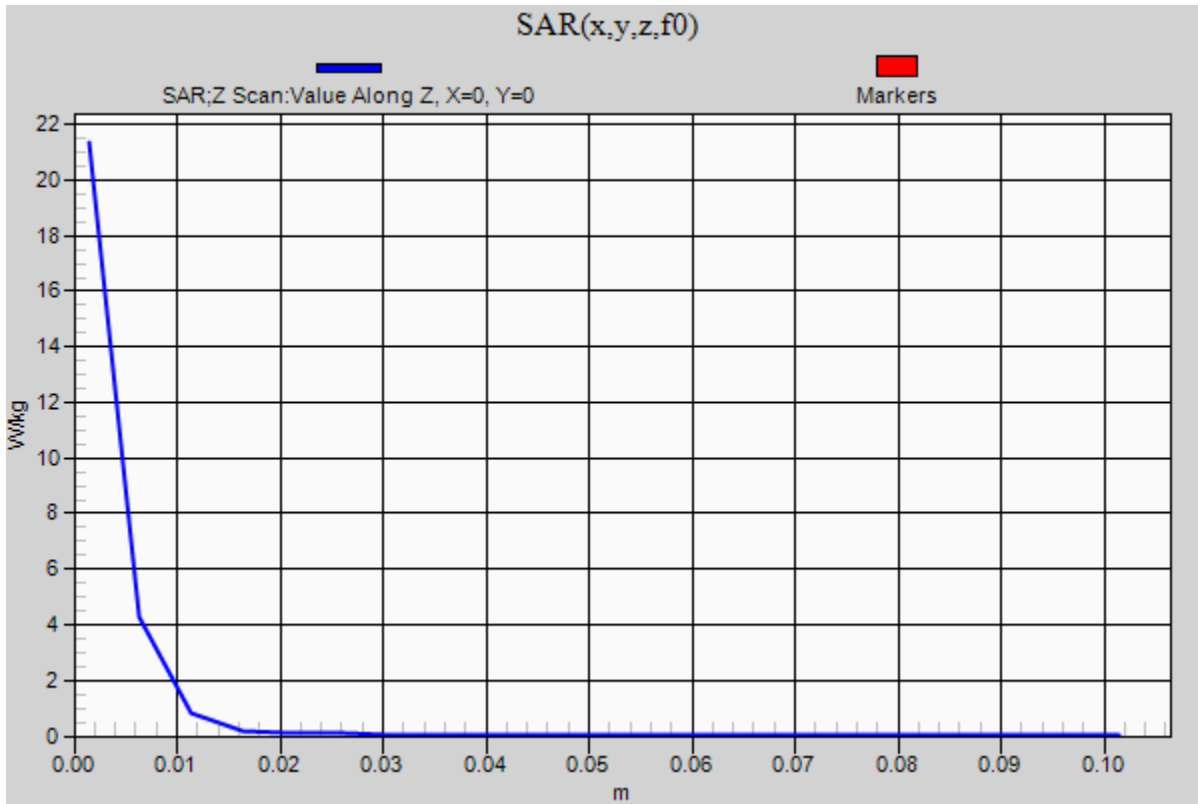
0 dB = 21.4 W/kg = 13.30 dBW/kg

### 20150113\_System check\_Diple5GHzv2 SN1004

Frequency: 5600 MHz; Duty Cycle: 1:1

**Body/5600MHz,Pin=100mW,d=10mm/Z Scan (1x1x21):** Measurement grid: dx=20mm, dy=20mm, dz=5mm

Maximum value of SAR (measured) = 21.3 W/kg



## 20150113\_System check\_Diple5GHzv2 SN1004

Frequency: 5800 MHz; Duty Cycle: 1:1; Room Ambient Temperature: 24.5°C; Liquid Temperature: 24.0°C

Medium parameters used (interpolated):  $f = 5800$  MHz;  $\sigma = 6.236$  S/m;  $\epsilon_r = 48.792$ ;  $\rho = 1000$  kg/m<sup>3</sup>

DASY5 Configuration:

- Area Scan Setting - Find Secondary Maximum Within: 2.0 dB and with a peak SAR value greater than 0.0012W/kg
- Electronics: DAE4 Sn877; Calibrated: 2014/03/26
- Probe: EX3DV4 - SN3665; ConvF(4.22, 4.22, 4.22); Calibrated: 2014/05/22;
- Sensor-Surface: 1.4mm (Mechanical Surface Detection (Locations From Previous Scan Used)), Sensor-Surface: 1.4mm (Mechanical Surface Detection)
- Phantom: ELI 4.0; Type: QDOVA001BA; Serial: 1056

**Body/5800MHz,Pin=100mW,d=10mm/Area Scan (7x7x1):** Measurement grid: dx=10mm, dy=10mm

[Info: Interpolated medium parameters used for SAR evaluation.](#)

Maximum value of SAR (measured) = 20.5 W/kg

**Body/5800MHz,Pin=100mW,d=10mm/Zoom Scan (7x7x6)/Cube 0:** Measurement grid: dx=4mm, dy=4mm, dz=1.4mm

Reference Value = 39.05 V/m; Power Drift = -0.04 dB

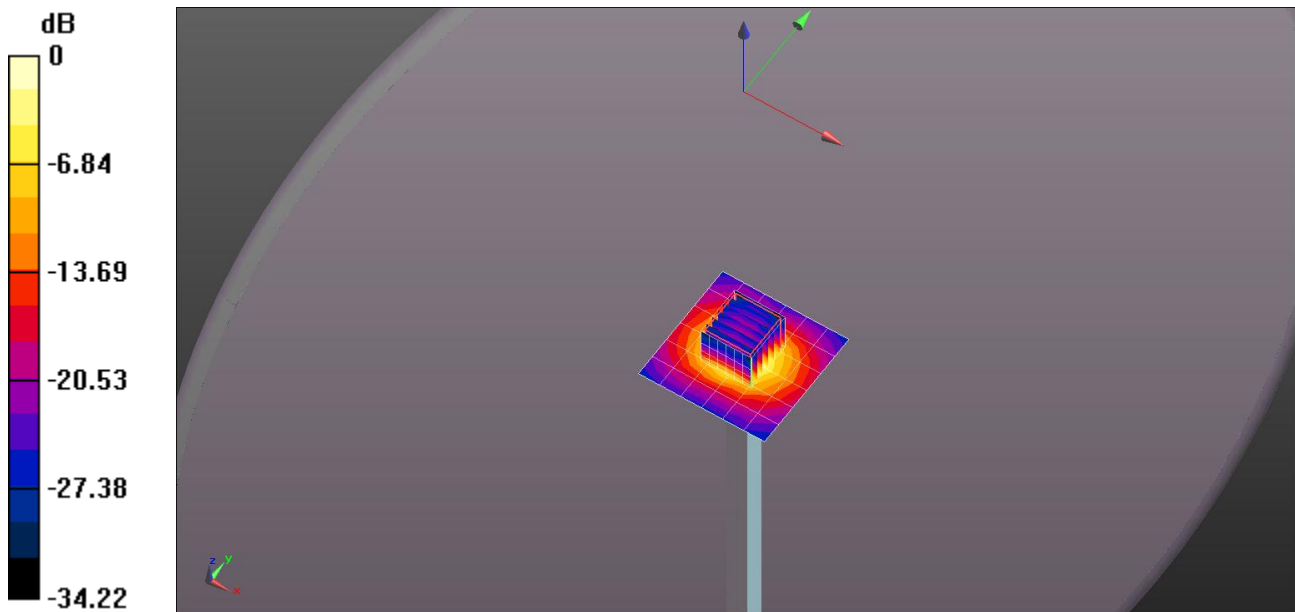
Peak SAR (extrapolated) = 29.4 W/kg

Peak SAR (extrapolated) = 29.4 W/kg

**SAR(1 g) = 7.2 W/kg; SAR(10 g) = 2.1 W/kg**

[Info: Interpolated medium parameters used for SAR evaluation.](#)

Maximum value of SAR (measured) = 18.8 W/kg



0 dB = 18.8 W/kg = 12.74 dBW/kg

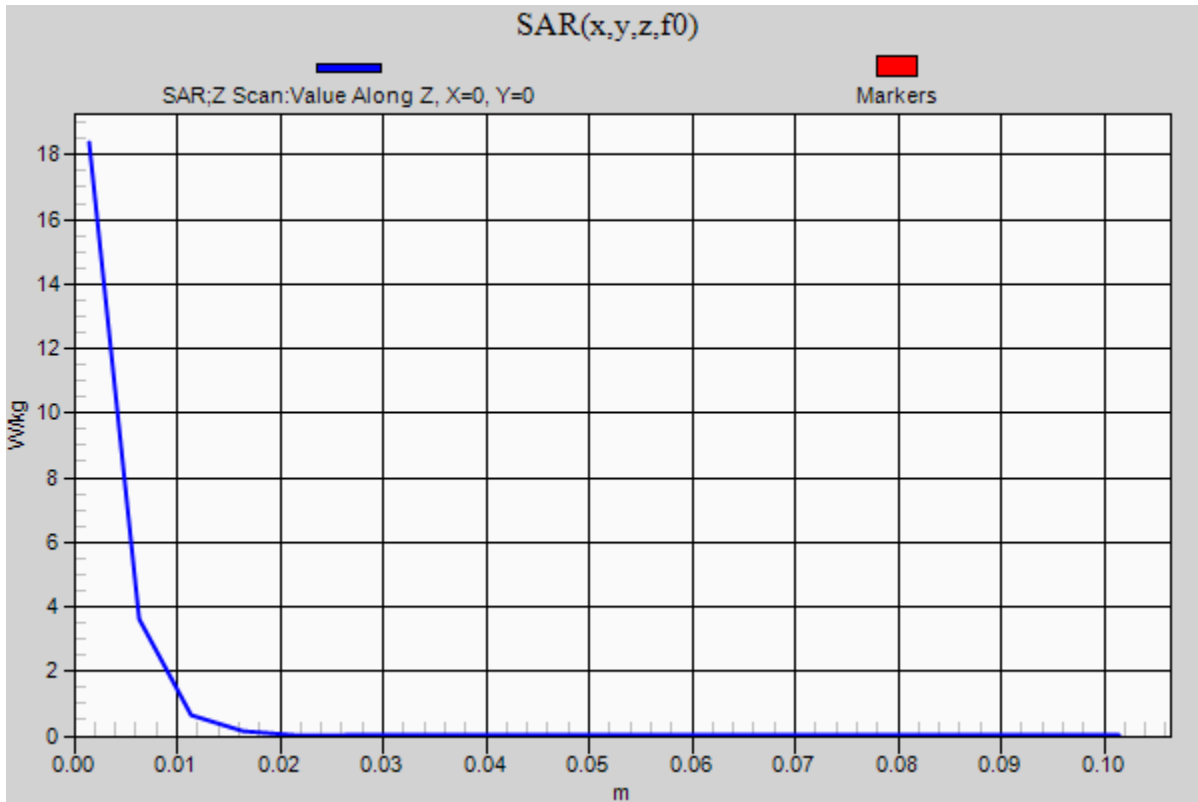
### 20150113\_System check\_Diple5GHzv2 SN1004

Frequency: 5800 MHz; Duty Cycle: 1:1

**Body/5800MHz,Pin=100mW,d=10mm/Z Scan (1x1x21):** Measurement grid: dx=20mm, dy=20mm, dz=5mm

Info: [Interpolated medium parameters used for SAR evaluation.](#)

Maximum value of SAR (measured) = 18.4 W/kg





## 20150114\_System check\_Diple5GHzv2 SN1004

Frequency: 5200 MHz; Duty Cycle: 1:1; Room Ambient Temperature: 24.5°C; Liquid Temperature: 24.0°C

Medium parameters used (interpolated):  $f = 5200$  MHz;  $\sigma = 5.26$  S/m;  $\epsilon_r = 51.033$ ;  $\rho = 1000$  kg/m<sup>3</sup>

DASY5 Configuration:

- Area Scan Setting - Find Secondary Maximum Within: 2.0 dB and with a peak SAR value greater than 0.0012W/kg
- Electronics: DAE4 Sn877; Calibrated: 2014/03/26
- Probe: EX3DV4 - SN3665; ConvF(4.43, 4.43, 4.43); Calibrated: 2014/05/22;
- Sensor-Surface: 1.4mm (Mechanical Surface Detection)
- Phantom: ELI 4.0; Type: QDOVA001BA; Serial: 1056

**Body/5200MHz,Pin=100mW,d=10mm/Area Scan (7x7x1):** Measurement grid: dx=10mm, dy=10mm

[Info: Interpolated medium parameters used for SAR evaluation.](#)

Maximum value of SAR (measured) = 17.4 W/kg

**Body/5200MHz,Pin=100mW,d=10mm/Zoom Scan (7x7x6)/Cube 0:** Measurement grid: dx=4mm, dy=4mm, dz=1.4mm

Reference Value = 39.91 V/m; Power Drift = 0.03 dB

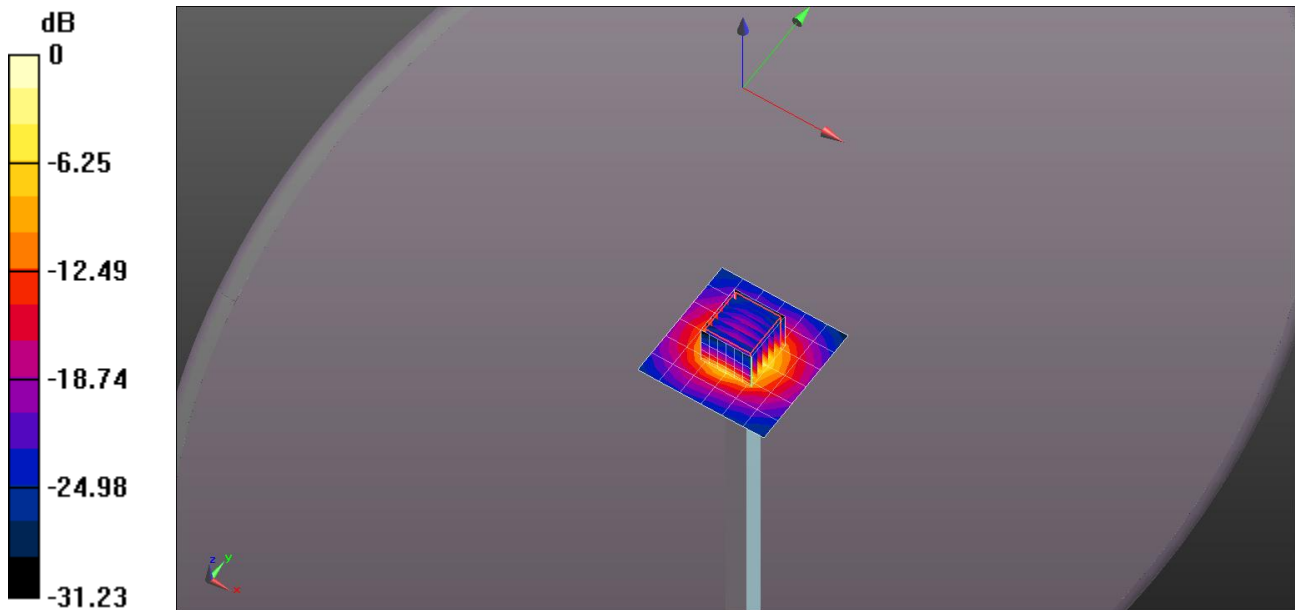
Peak SAR (extrapolated) = 29.2 W/kg

Peak SAR (extrapolated) = 29.2 W/kg

**SAR(1 g) = 7.45 W/kg; SAR(10 g) = 2.14 W/kg**

[Info: Interpolated medium parameters used for SAR evaluation.](#)

Maximum value of SAR (measured) = 19.1 W/kg



0 dB = 19.1 W/kg = 12.81 dBW/kg

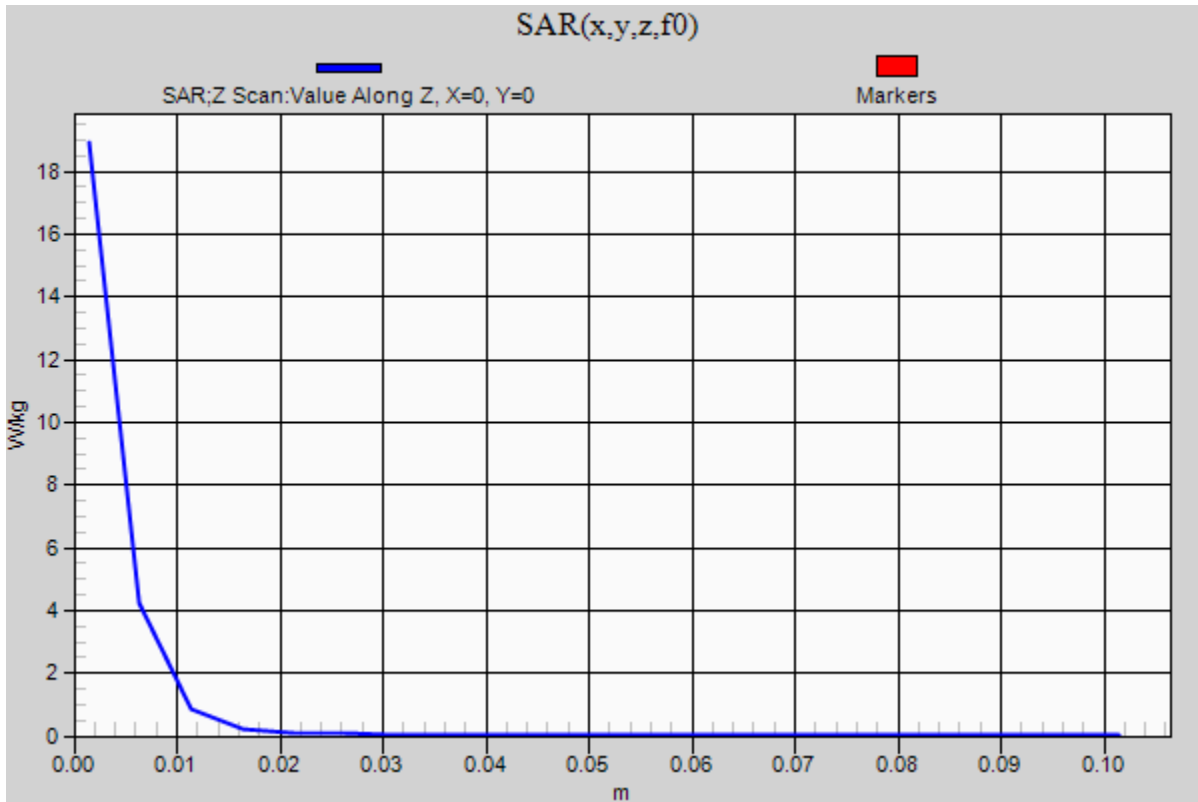
### 20150114\_System check\_Diple5GHzv2 SN1004

Frequency: 5200 MHz; Duty Cycle: 1:1

**Body/5200MHz,Pin=100mW,d=10mm/Z Scan (1x1x21):** Measurement grid: dx=20mm, dy=20mm, dz=5mm

Info: [Interpolated medium parameters used for SAR evaluation.](#)

Maximum value of SAR (measured) = 18.9 W/kg



## 20150114\_System check\_Diple5GHzv2 SN1004

Frequency: 5300 MHz; Duty Cycle: 1:1; Room Ambient Temperature: 24.5°C; Liquid Temperature: 24.0°C

Medium parameters used:  $f = 5300.2 \text{ MHz}$ ;  $\sigma = 5.395 \text{ S/m}$ ;  $\epsilon_r = 50.831$ ;  $\rho = 1000 \text{ kg/m}^3$

DASY5 Configuration:

- Area Scan Setting - Find Secondary Maximum Within: 2.0 dB and with a peak SAR value greater than 0.0012W/kg
- Electronics: DAE4 Sn877; Calibrated: 2014/03/26
- Probe: EX3DV4 - SN3665; ConvF(4.23, 4.23, 4.23); Calibrated: 2014/05/22;
- Sensor-Surface: 1.4mm (Mechanical Surface Detection)
- Phantom: ELI 4.0; Type: QDOVA001BA; Serial: 1056

**Body/5300MHz,Pin=100mW,d=10mm/Area Scan (7x7x1):** Measurement grid: dx=10mm, dy=10mm

Maximum value of SAR (measured) = 19.6 W/kg

**Body/5300MHz,Pin=100mW,d=10mm/Zoom Scan (7x7x6)/Cube 0:** Measurement grid: dx=4mm,

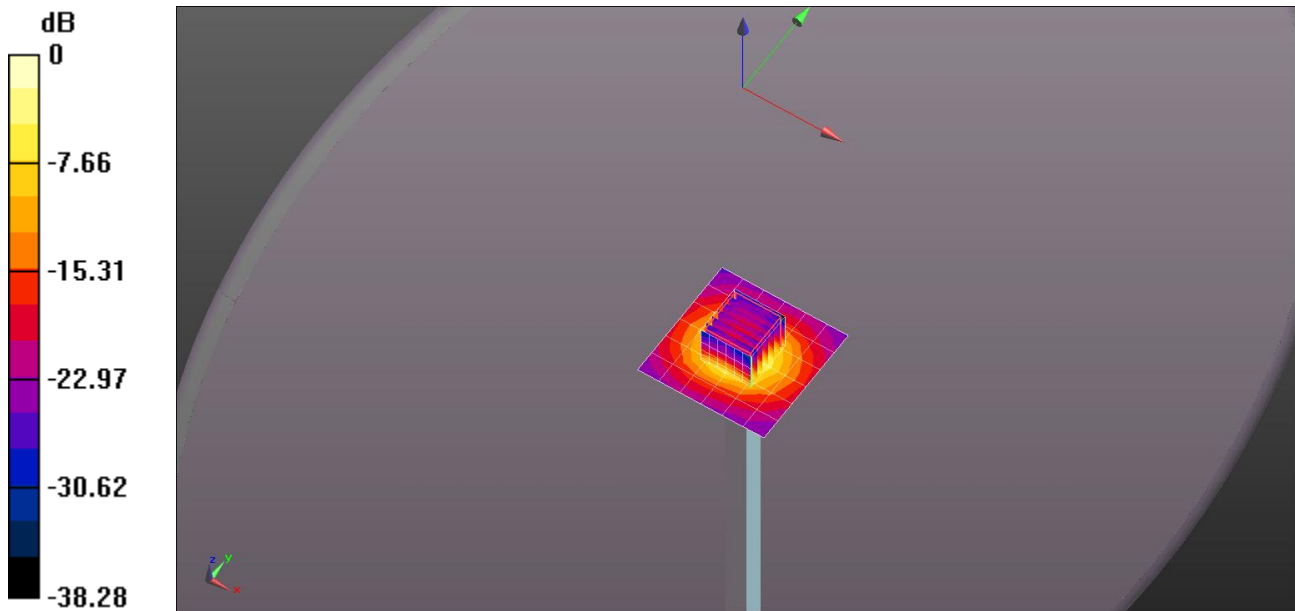
dy=4mm, dz=1.4mm

Reference Value = 41.26 V/m; Power Drift = -0.04 dB

Peak SAR (extrapolated) = 30.8 W/kg

**SAR(1 g) = 7.62 W/kg; SAR(10 g) = 2.18 W/kg**

Maximum value of SAR (measured) = 19.7 W/kg



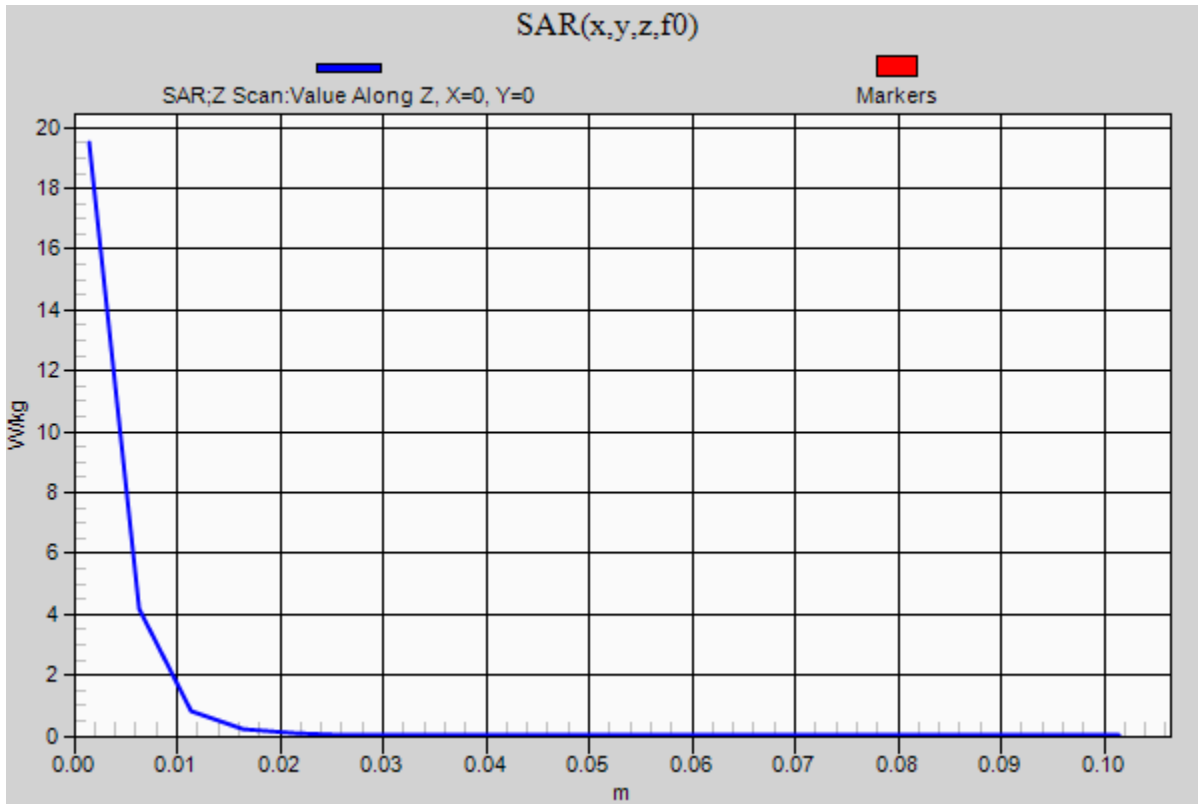
0 dB = 19.7 W/kg = 12.94 dBW/kg

### 20150114\_System check\_Diple5GHzv2 SN1004

Frequency: 5300 MHz; Duty Cycle: 1:1

**Body/5300MHz,Pin=100mW,d=10mm/Z Scan (1x1x21):** Measurement grid: dx=20mm, dy=20mm, dz=5mm

Maximum value of SAR (measured) = 19.5 W/kg



## 20150114\_System check\_Diple5GHzv2 SN1004

Frequency: 5600 MHz; Duty Cycle: 1:1; Room Ambient Temperature: 24.5°C; Liquid Temperature: 24.0°C

Medium parameters used:  $f = 5600.5$  MHz;  $\sigma = 5.77$  S/m;  $\epsilon_r = 50.294$ ;  $\rho = 1000$  kg/m<sup>3</sup>

DASY5 Configuration:

- Area Scan Setting - Find Secondary Maximum Within: 2.0 dB and with a peak SAR value greater than 0.0012W/kg
- Electronics: DAE4 Sn877; Calibrated: 2014/03/26
- Probe: EX3DV4 - SN3665; ConvF(3.82, 3.82, 3.82); Calibrated: 2014/05/22;
- Sensor-Surface: 1.4mm (Mechanical Surface Detection)
- Phantom: ELI 4.0; Type: QDOVA001BA; Serial: 1056

**Body/5600MHz,Pin=100mW,d=10mm/Area Scan (7x7x1):** Measurement grid: dx=10mm, dy=10mm

Maximum value of SAR (measured) = 21.0 W/kg

**Body/5600MHz,Pin=100mW,d=10mm/Zoom Scan (7x7x6)/Cube 0:** Measurement grid: dx=4mm,

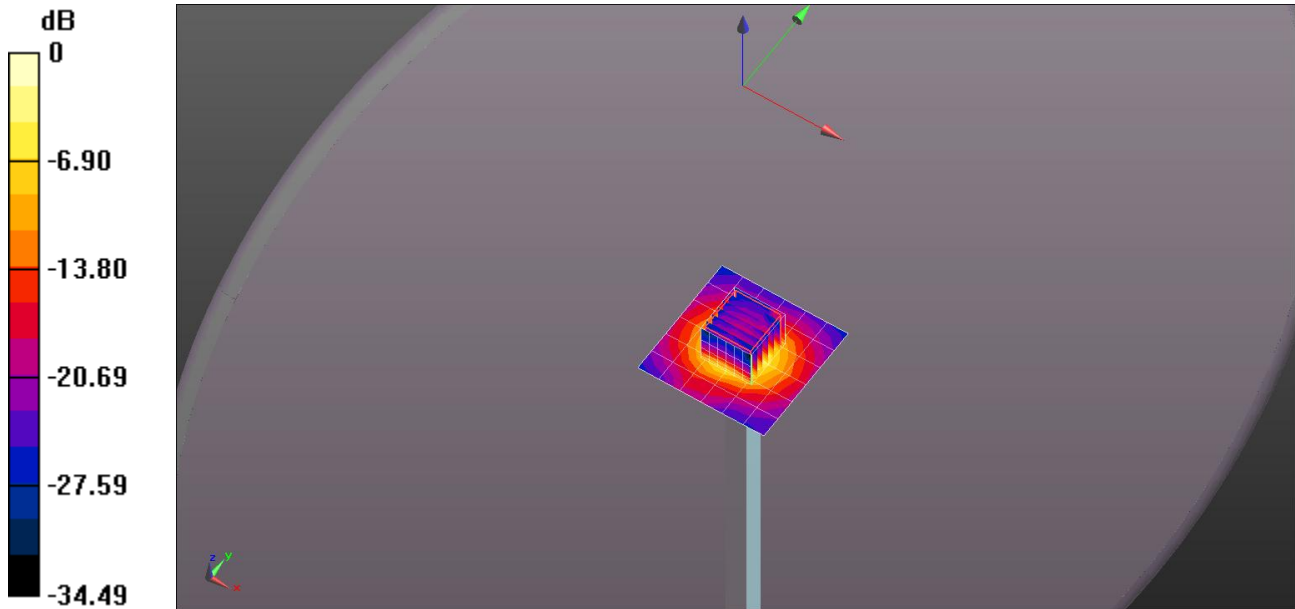
dy=4mm, dz=1.4mm

Reference Value = 40.45 V/m; Power Drift = -0.09 dB

Peak SAR (extrapolated) = 33.0 W/kg

**SAR(1 g) = 7.9 W/kg; SAR(10 g) = 2.27 W/kg**

Maximum value of SAR (measured) = 20.7 W/kg



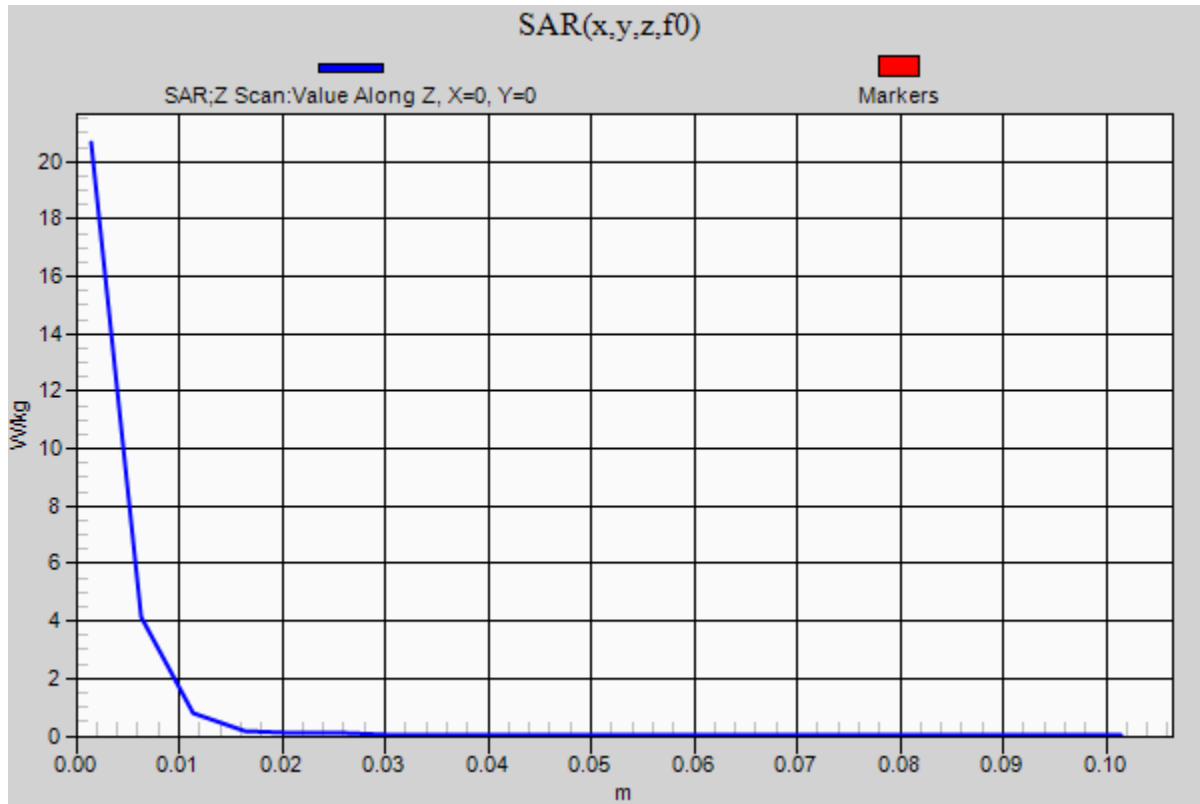
0 dB = 20.7 W/kg = 13.16 dBW/kg

### 20150114\_System check\_Diple5GHzv2 SN1004

Frequency: 5600 MHz; Duty Cycle: 1:1

**Body/5600MHz,Pin=100mW,d=10mm/Z Scan (1x1x21):** Measurement grid: dx=20mm, dy=20mm, dz=5mm

Maximum value of SAR (measured) = 20.7 W/kg



## 20150114\_System check\_Diple5GHzv2 SN1004

Frequency: 5800 MHz; Duty Cycle: 1:1; Room Ambient Temperature: 24.5°C; Liquid Temperature: 24.0°C

Medium parameters used (interpolated):  $f = 5800$  MHz;  $\sigma = 6.044$  S/m;  $\epsilon_r = 49.956$ ;  $\rho = 1000$  kg/m<sup>3</sup>

DASY5 Configuration:

- Area Scan Setting - Find Secondary Maximum Within: 2.0 dB and with a peak SAR value greater than 0.0012W/kg
- Electronics: DAE4 Sn877; Calibrated: 2014/03/26
- Probe: EX3DV4 - SN3665; ConvF(4.22, 4.22, 4.22); Calibrated: 2014/05/22;
- Sensor-Surface: 1.4mm (Mechanical Surface Detection)
- Phantom: ELI 4.0; Type: QDOVA001BA; Serial: 1056

**Body/5800MHz,Pin=100mW,d=10mm/Area Scan (7x7x1):** Measurement grid: dx=10mm, dy=10mm

[Info: Interpolated medium parameters used for SAR evaluation.](#)

Maximum value of SAR (measured) = 21.4 W/kg

**Body/5800MHz,Pin=100mW,d=10mm/Zoom Scan (7x7x6)/Cube 0:** Measurement grid: dx=4mm,

dy=4mm, dz=1.4mm

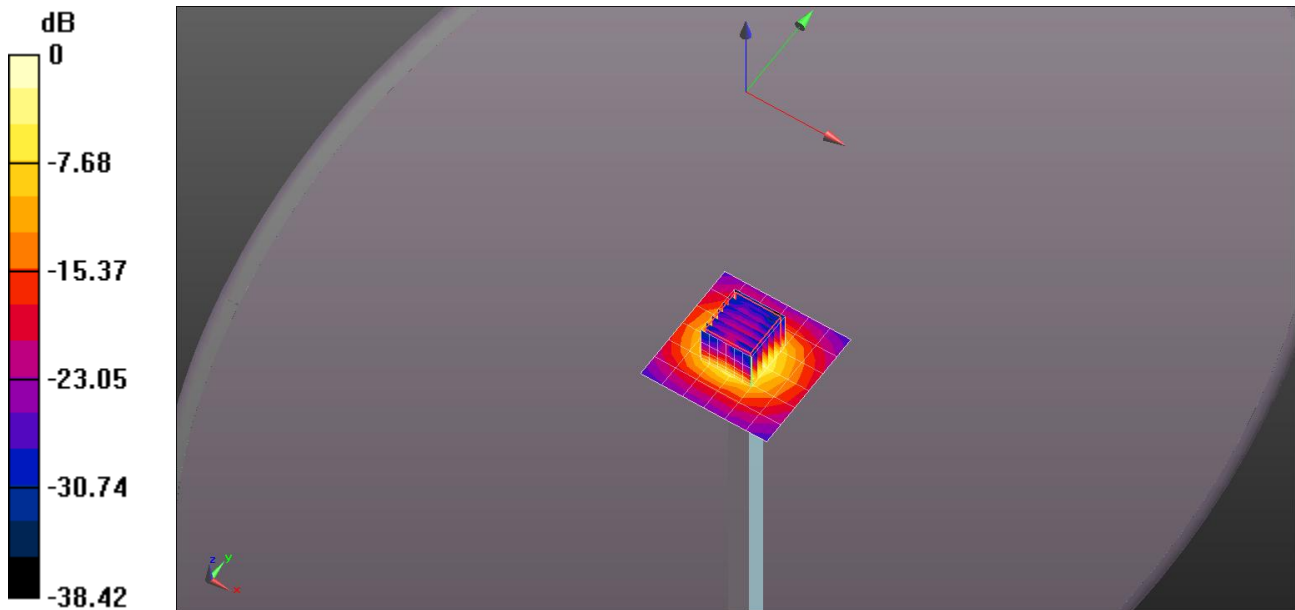
Reference Value = 39.68 V/m; Power Drift = -0.01 dB

Peak SAR (extrapolated) = 33.1 W/kg

**SAR(1 g) = 7.44 W/kg; SAR(10 g) = 2.12 W/kg**

[Info: Interpolated medium parameters used for SAR evaluation.](#)

Maximum value of SAR (measured) = 19.8 W/kg



0 dB = 19.8 W/kg = 12.97 dBW/kg

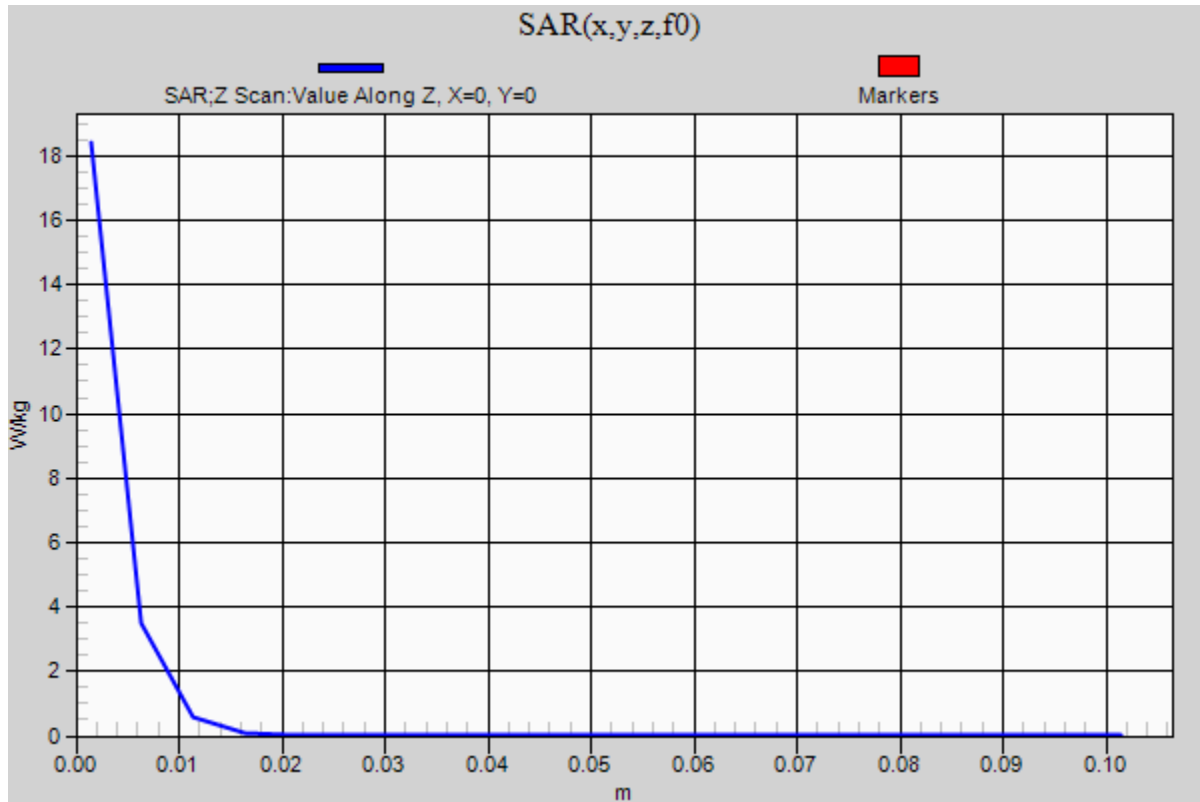
### 20150114\_System check\_Diple5GHzv2 SN1004

Frequency: 5800 MHz; Duty Cycle: 1:1

**Body/5800MHz,Pin=100mW,d=10mm/Z Scan (1x1x21):** Measurement grid: dx=20mm, dy=20mm, dz=5mm

Info: [Interpolated medium parameters used for SAR evaluation.](#)

Maximum value of SAR (measured) = 18.4 W/kg





## 20150302\_System check\_Diple5GHzv2 SN1004

Frequency: 5200 MHz; Duty Cycle: 1:1; Room Ambient Temperature: 24.5°C; Liquid Temperature: 24.0°C

Medium parameters used (interpolated):  $f = 5200$  MHz;  $\sigma = 5.17$  S/m;  $\epsilon_r = 47.922$ ;  $\rho = 1000$  kg/m<sup>3</sup>

DASY5 Configuration:

- Area Scan Setting - Find Secondary Maximum Within: 2.0 dB and with a peak SAR value greater than 0.0012W/kg
- Electronics: DAE4 Sn877; Calibrated: 2014/03/26
- Probe: EX3DV4 - SN3665; ConvF(4.43, 4.43, 4.43); Calibrated: 2014/05/22;
- Sensor-Surface: 1.4mm (Mechanical Surface Detection)
- Phantom: ELI 4.0; Type: QDOVA001BA; Serial: 1056

**Body/5200MHz,Pin=100mW,d=10mm/Area Scan (7x7x1):** Measurement grid: dx=10mm, dy=10mm

[Info: Interpolated medium parameters used for SAR evaluation.](#)

Maximum value of SAR (measured) = 18.9 W/kg

**Body/5200MHz,Pin=100mW,d=10mm/Zoom Scan (7x7x6)/Cube 0:** Measurement grid: dx=4mm, dy=4mm, dz=1.4mm

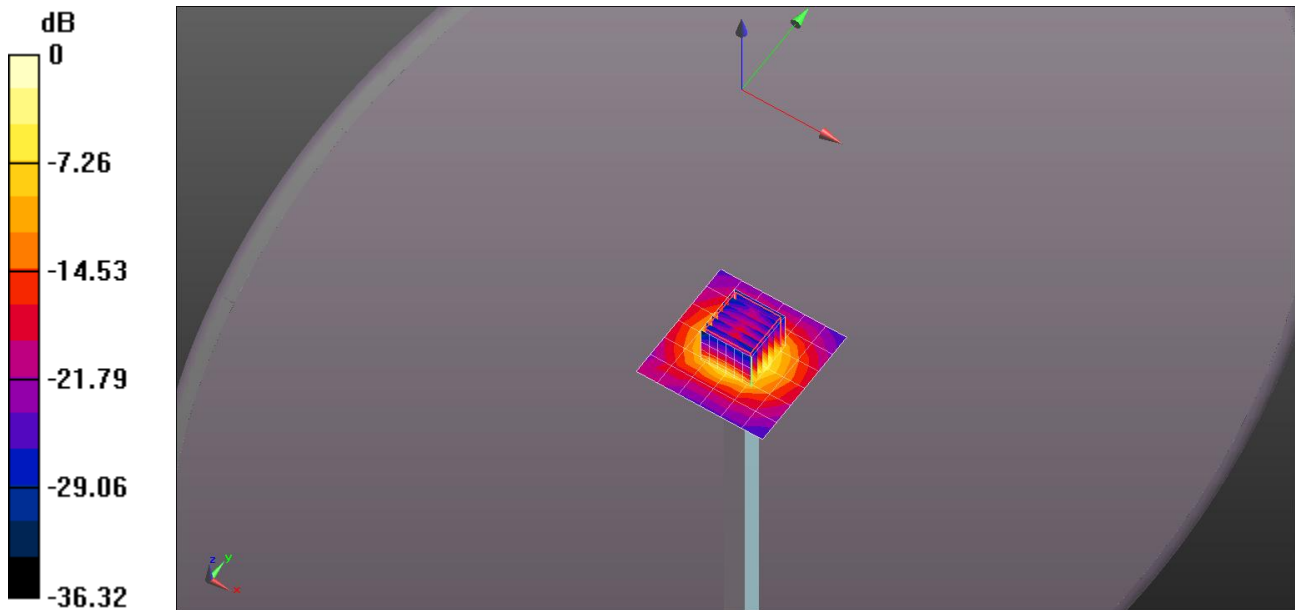
Reference Value = 42.31 V/m; Power Drift = -0.03 dB

Peak SAR (extrapolated) = 28.5 W/kg

**SAR(1 g) = 7.43 W/kg; SAR(10 g) = 2.15 W/kg**

[Info: Interpolated medium parameters used for SAR evaluation.](#)

Maximum value of SAR (measured) = 18.7 W/kg



0 dB = 18.7 W/kg = 12.72 dBW/kg

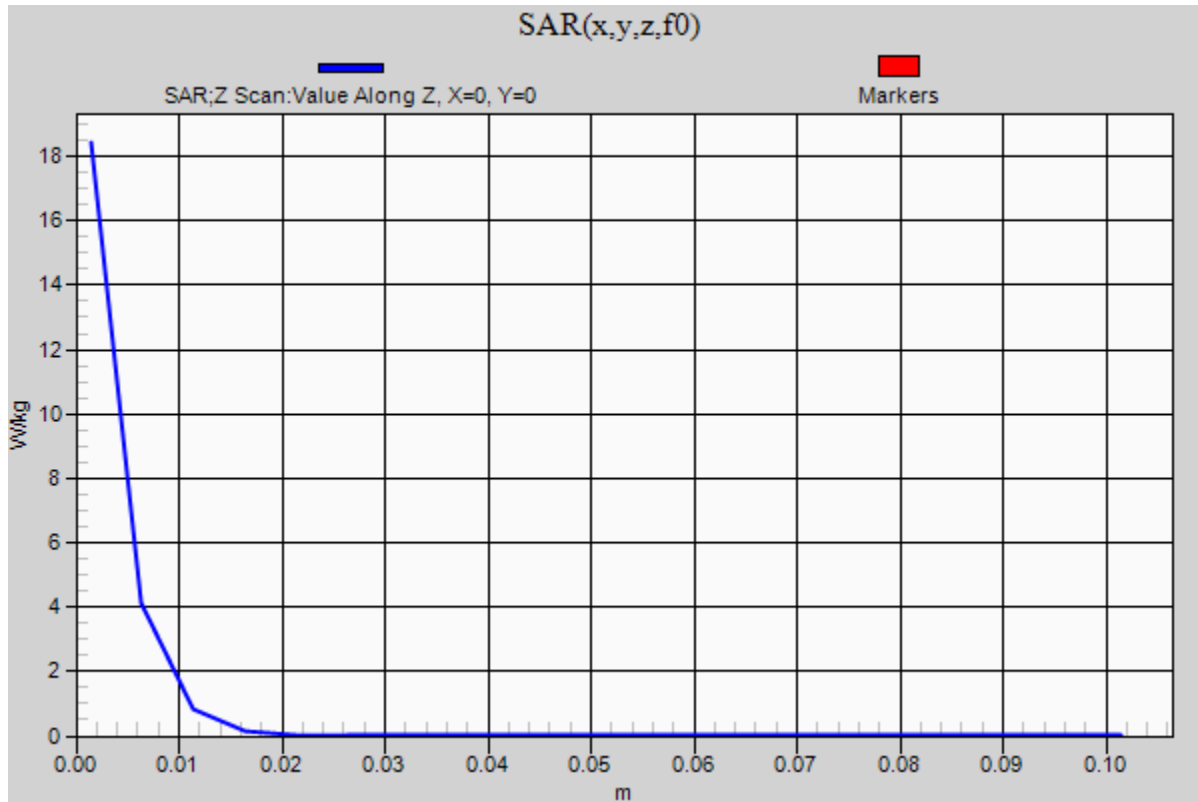
## 20150302\_System check\_Diple5GHzv2 SN1004

Frequency: 5200 MHz; Duty Cycle: 1:1

**Body/5200MHz,Pin=100mW,d=10mm/Z Scan (1x1x21):** Measurement grid: dx=20mm, dy=20mm, dz=5mm

Info: [Interpolated medium parameters used for SAR evaluation.](#)

Maximum value of SAR (measured) = 18.4 W/kg



## 20150302\_System check\_Diple5GHzv2 SN1004

Frequency: 5300 MHz; Duty Cycle: 1:1; Room Ambient Temperature: 24.5°C; Liquid Temperature: 24.0°C

Medium parameters used:  $f = 5300.2$  MHz;  $\sigma = 5.304$  S/m;  $\epsilon_r = 47.726$ ;  $\rho = 1000$  kg/m<sup>3</sup>

DASY5 Configuration:

- Area Scan Setting - Find Secondary Maximum Within: 2.0 dB and with a peak SAR value greater than 0.0012W/kg
- Electronics: DAE4 Sn877; Calibrated: 2014/03/26
- Probe: EX3DV4 - SN3665; ConvF(4.23, 4.23, 4.23); Calibrated: 2014/05/22;
- Sensor-Surface: 1.4mm (Mechanical Surface Detection)
- Phantom: ELI 4.0; Type: QDOVA001BA; Serial: 1056

**Body/5300MHz,Pin=100mW,d=10mm/Area Scan (7x7x1):** Measurement grid: dx=10mm, dy=10mm

Maximum value of SAR (measured) = 19.3 W/kg

**Body/5300MHz,Pin=100mW,d=10mm/Zoom Scan (7x7x6)/Cube 0:** Measurement grid: dx=4mm,

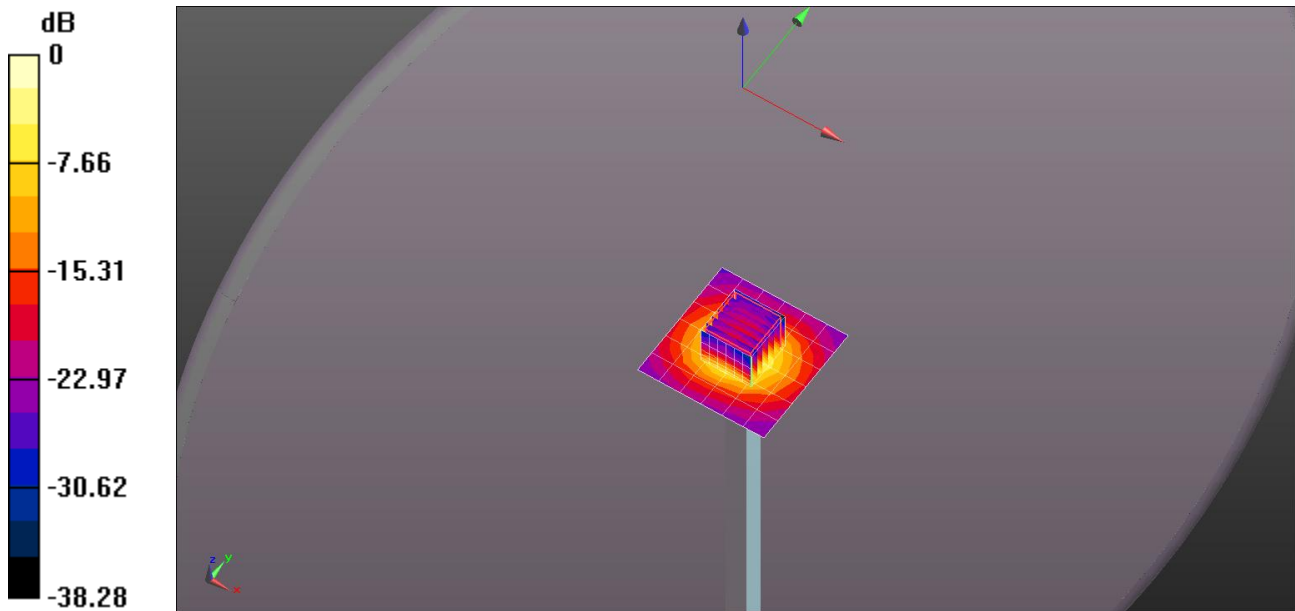
dy=4mm, dz=1.4mm

Reference Value = 41.26 V/m; Power Drift = -0.04 dB

Peak SAR (extrapolated) = 30.3 W/kg

**SAR(1 g) = 7.49 W/kg; SAR(10 g) = 2.14 W/kg**

Maximum value of SAR (measured) = 19.4 W/kg



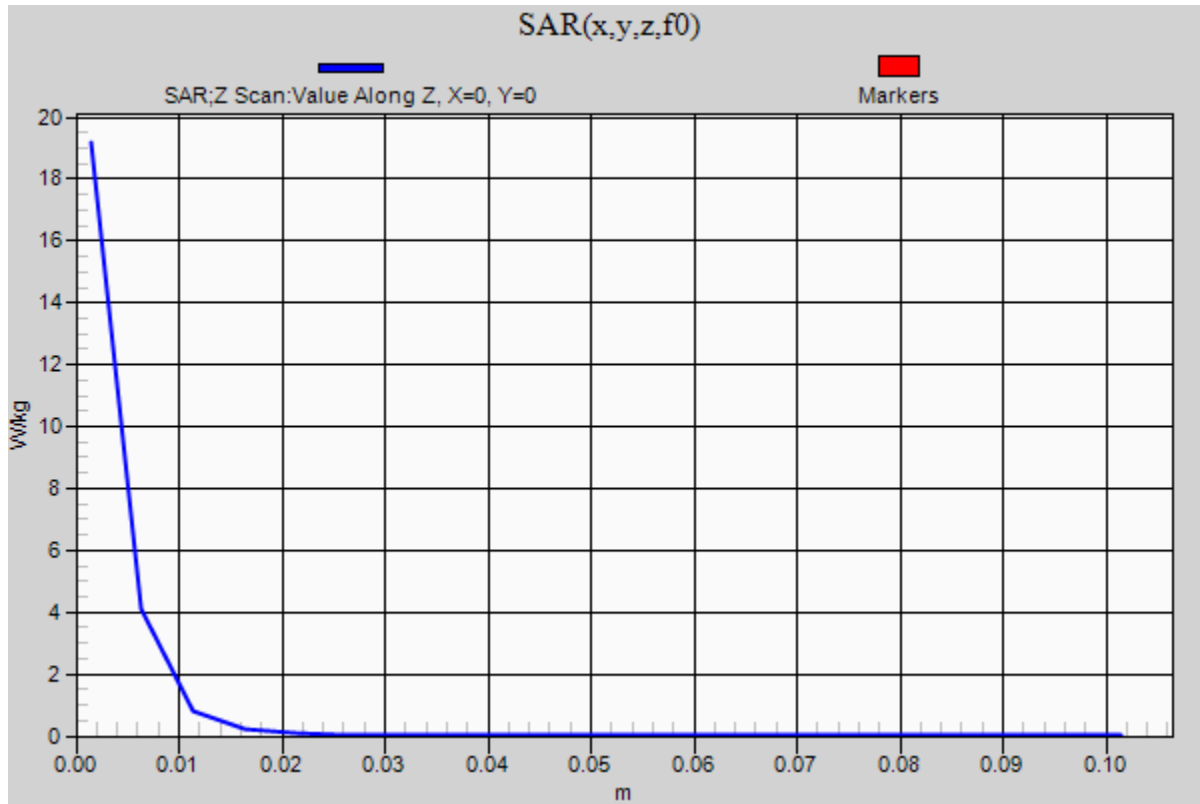
0 dB = 19.4 W/kg = 12.88 dBW/kg

### 20150302\_System check\_Diple5GHzv2 SN1004

Frequency: 5300 MHz; Duty Cycle: 1:1

**Body/5300MHz,Pin=100mW,d=10mm/Z Scan (1x1x21):** Measurement grid: dx=20mm, dy=20mm, dz=5mm

Maximum value of SAR (measured) = 19.2 W/kg



## 20150302\_System check\_Diple5GHzv2 SN1004

Frequency: 5600 MHz; Duty Cycle: 1:1; Room Ambient Temperature: 24.5°C; Liquid Temperature: 24.0°C

Medium parameters used:  $f = 5600.5$  MHz;  $\sigma = 5.647$  S/m;  $\epsilon_r = 47.354$ ;  $\rho = 1000$  kg/m<sup>3</sup>

DASY5 Configuration:

- Area Scan Setting - Find Secondary Maximum Within: 2.0 dB and with a peak SAR value greater than 0.0012W/kg
- Electronics: DAE4 Sn877; Calibrated: 2014/03/26
- Probe: EX3DV4 - SN3665; ConvF(3.82, 3.82, 3.82); Calibrated: 2014/05/22;
- Sensor-Surface: 1.4mm (Mechanical Surface Detection)
- Phantom: ELI 4.0; Type: QDOVA001BA; Serial: 1056

**Body/5600MHz,Pin=100mW,d=10mm/Area Scan (7x7x1):** Measurement grid: dx=10mm, dy=10mm

Maximum value of SAR (measured) = 20.5 W/kg

**Body/5600MHz,Pin=100mW,d=10mm/Zoom Scan (7x7x6)/Cube 0:** Measurement grid: dx=4mm,

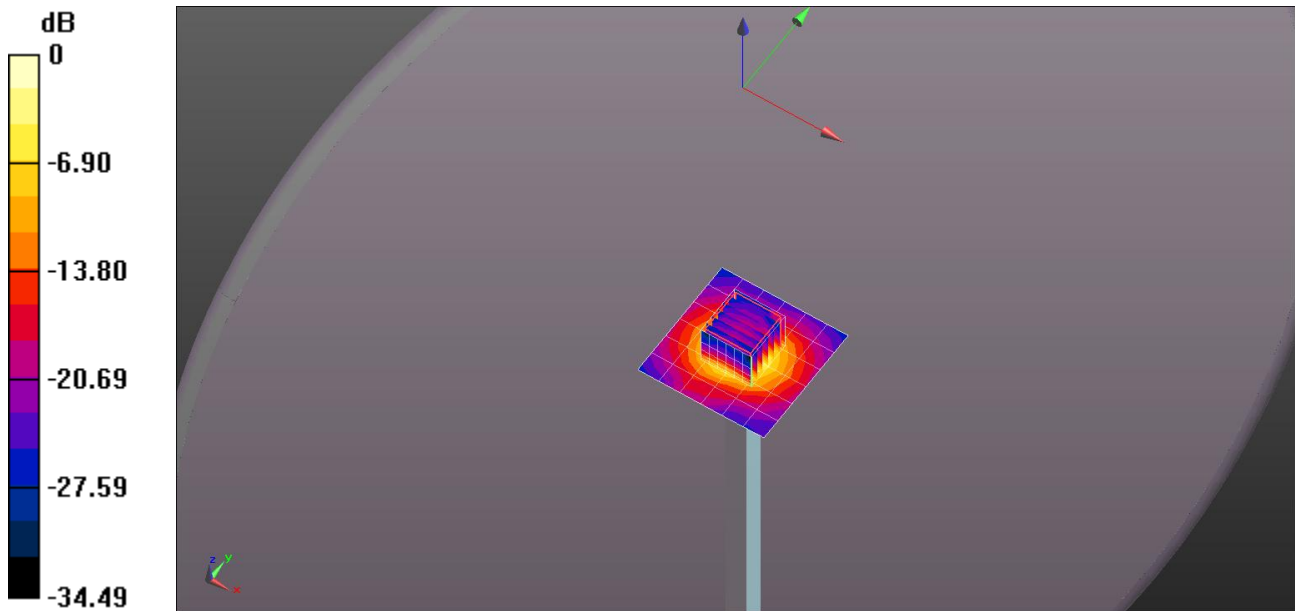
dy=4mm, dz=1.4mm

Reference Value = 40.45 V/m; Power Drift = -0.09 dB

Peak SAR (extrapolated) = 32.3 W/kg

**SAR(1 g) = 7.73 W/kg; SAR(10 g) = 2.22 W/kg**

Maximum value of SAR (measured) = 20.3 W/kg



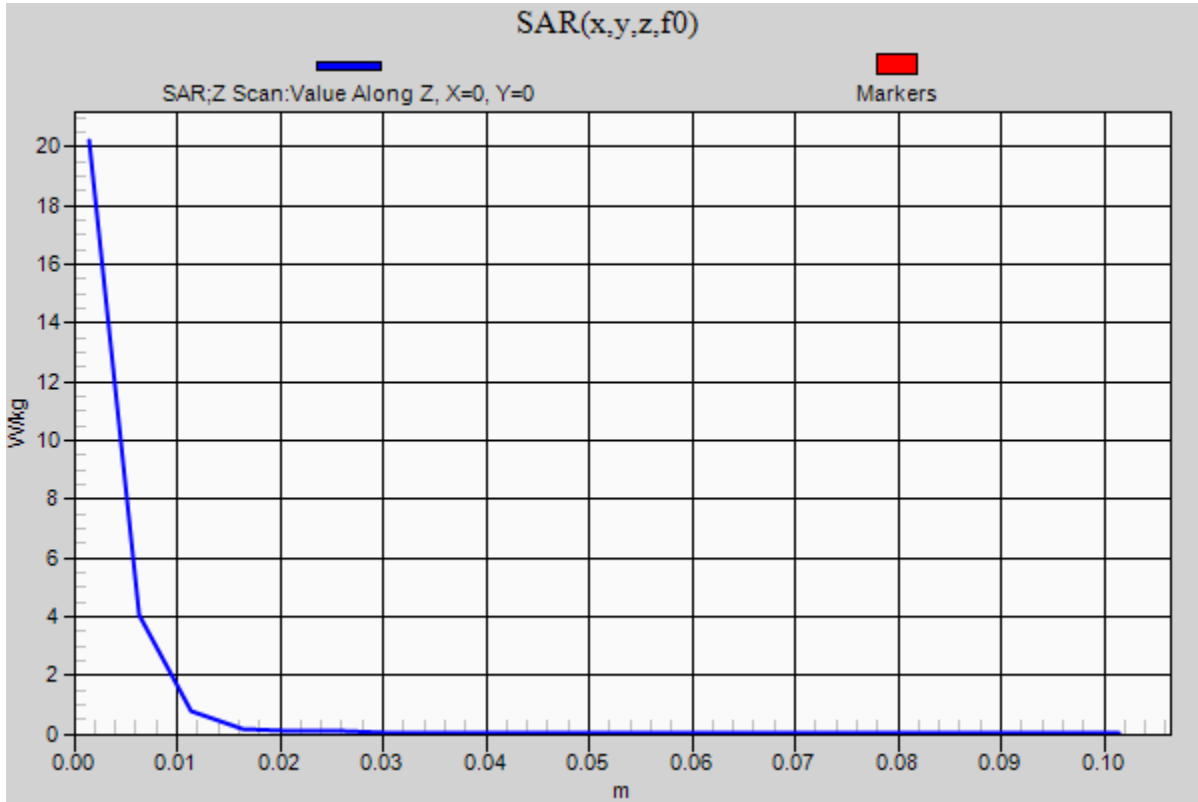
0 dB = 20.3 W/kg = 13.07 dBW/kg

### 20150302\_System check\_Diple5GHzv2 SN1004

Frequency: 5600 MHz; Duty Cycle: 1:1

**Body/5600MHz,Pin=100mW,d=10mm/Z Scan (1x1x21):** Measurement grid: dx=20mm, dy=20mm, dz=5mm

Maximum value of SAR (measured) = 20.2 W/kg



## 20150302\_System check\_Diple5GHzv2 SN1004

Frequency: 5800 MHz; Duty Cycle: 1:1; Room Ambient Temperature: 24.5°C; Liquid Temperature: 24.0°C  
 Medium parameters used (interpolated):  $f = 5800 \text{ MHz}$ ;  $\sigma = 5.916 \text{ S/m}$ ;  $\epsilon_r = 47.118$ ;  $\rho = 1000 \text{ kg/m}^3$

DASY5 Configuration:

- Area Scan Setting - Find Secondary Maximum Within: 2.0 dB and with a peak SAR value greater than 0.0012W/kg
- Electronics: DAE4 Sn877; Calibrated: 2014/03/26
- Probe: EX3DV4 - SN3665; ConvF(4.22, 4.22, 4.22); Calibrated: 2014/05/22;
- Sensor-Surface: 1.4mm (Mechanical Surface Detection (Locations From Previous Scan Used)), Sensor-Surface: 1.4mm (Mechanical Surface Detection)
- Phantom: ELI 4.0; Type: QDOVA001BA; Serial: 1056

**Body/5800MHz,Pin=100mW,d=10mm/Area Scan (7x7x1):** Measurement grid: dx=10mm, dy=10mm

[Info: Interpolated medium parameters used for SAR evaluation.](#)

Maximum value of SAR (measured) = 17.9 W/kg

**Body/5800MHz,Pin=100mW,d=10mm/Zoom Scan (7x7x6)/Cube 0:** Measurement grid: dx=4mm, dy=4mm, dz=1.4mm

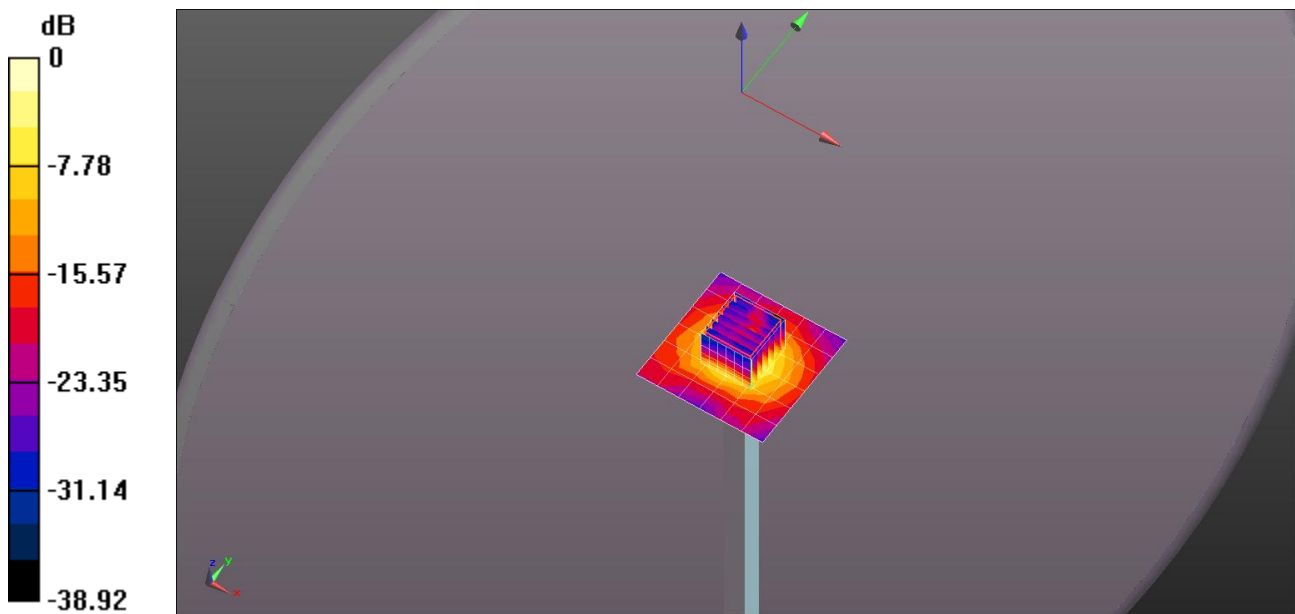
Reference Value = 36.26 V/m; Power Drift = 0.03 dB

Peak SAR (extrapolated) = 31.8 W/kg

**SAR(1 g) = 7.3 W/kg; SAR(10 g) = 2.11 W/kg**

[Info: Interpolated medium parameters used for SAR evaluation.](#)

Maximum value of SAR (measured) = 19.1 W/kg



0 dB = 19.1 W/kg = 12.81 dBW/kg

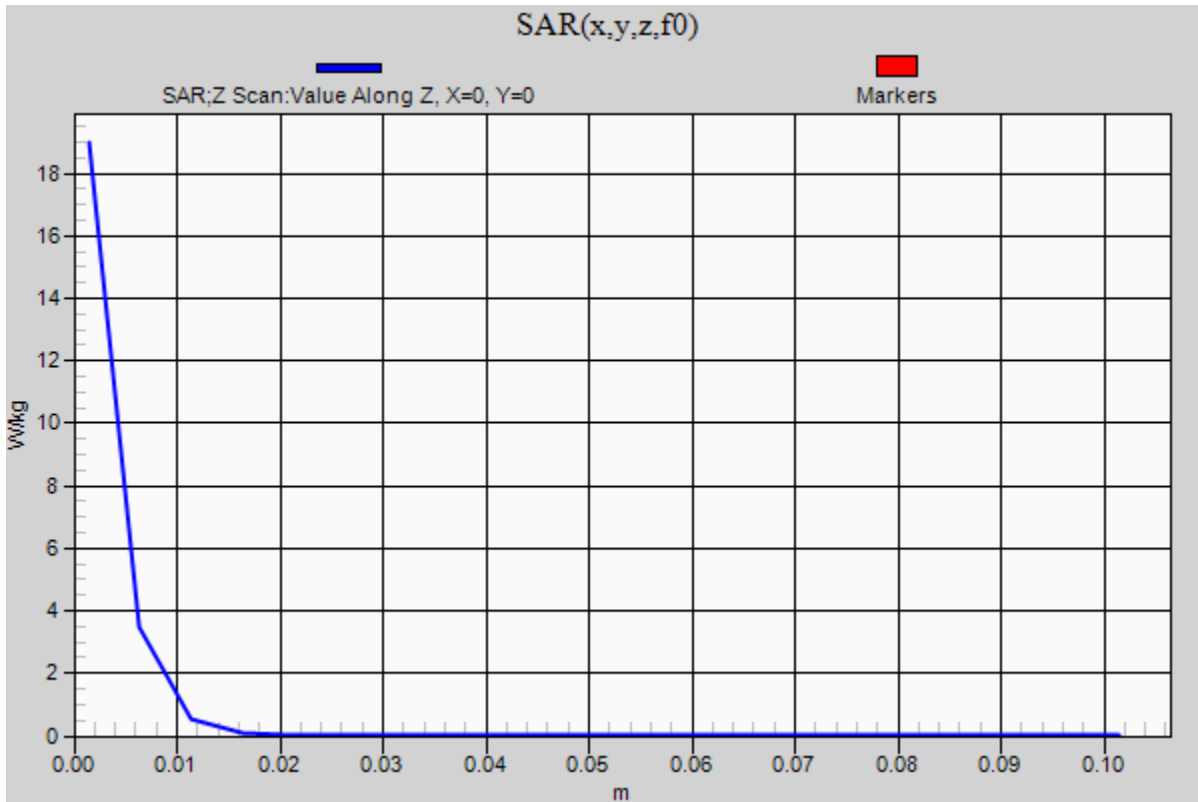
### 20150302\_System check\_Diple5GHzv2 SN1004

Frequency: 5800 MHz; Duty Cycle: 1:1

**Body/5800MHz,Pin=100mW,d=10mm/Z Scan (1x1x21):** Measurement grid: dx=20mm, dy=20mm, dz=5mm

Info: [Interpolated medium parameters used for SAR evaluation.](#)

Maximum value of SAR (measured) = 19.0 W/kg





## 20150113\_System check\_Diple2450v2 SN728

Frequency: 2450 MHz; Duty Cycle: 1:1; Room Ambient Temperature: 24.0°C; Liquid Temperature: 23.5°C

Medium parameters used (interpolated):  $f = 2450$  MHz;  $\sigma = 1.907$  S/m;  $\epsilon_r = 54.038$ ;  $\rho = 1000$  kg/m<sup>3</sup>

DASY5 Configuration:

- Area Scan Setting - Find Secondary Maximum Within: 2.0 dB and with a peak SAR value greater than 0.0012W/kg
- Electronics: DAE4 Sn877; Calibrated: 2014/03/26
- Probe: EX3DV4 - SN3665; ConvF(7.22, 7.22, 7.22); Calibrated: 2014/05/22;
- Sensor-Surface: 1.4mm (Mechanical Surface Detection)
- Phantom: ELI 4.0; Type: QDOVA001BA; Serial: 1056

**Body/Pin=100mW, d=10mm/Area Scan (7x9x1):** Measurement grid: dx=15mm, dy=15mm

[Info: Interpolated medium parameters used for SAR evaluation.](#)

Maximum value of SAR (measured) = 7.58 W/kg

**Body/Pin=100mW, d=10mm/Zoom Scan (7x7x7)/Cube 0:** Measurement grid: dx=5mm, dy=5mm, dz=5mm

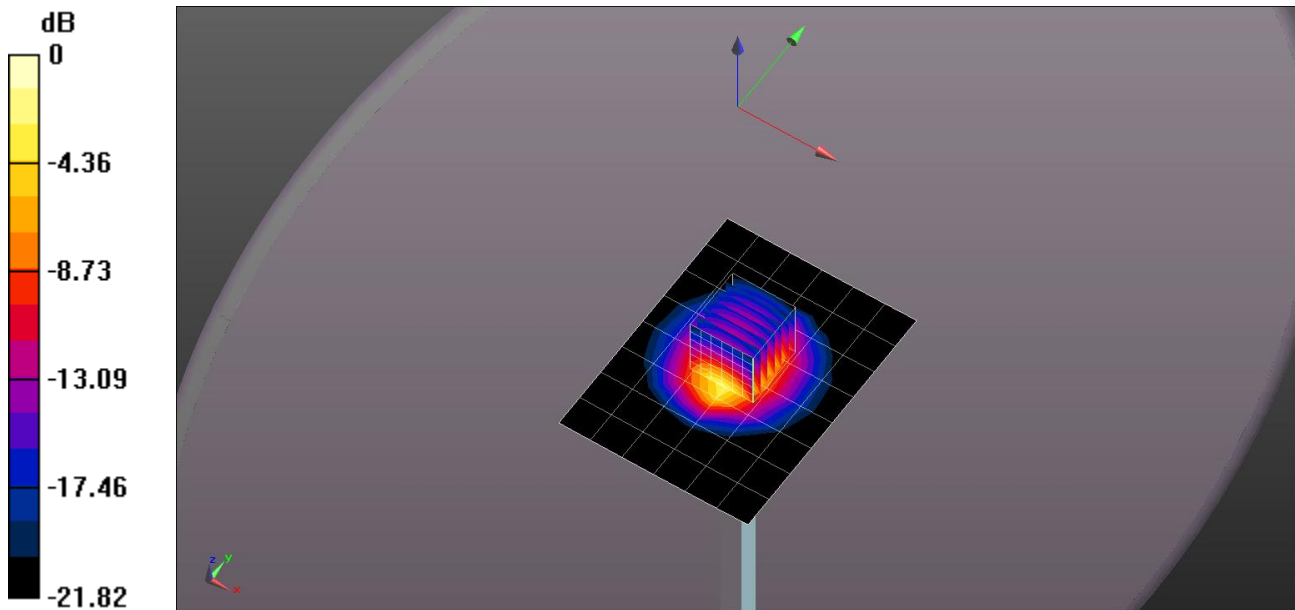
Reference Value = 64.59 V/m; Power Drift = -0.09 dB

Peak SAR (extrapolated) = 10.1 W/kg

**SAR(1 g) = 4.82 W/kg; SAR(10 g) = 2.24 W/kg**

[Info: Interpolated medium parameters used for SAR evaluation.](#)

Maximum value of SAR (measured) = 8.05 W/kg



0 dB = 8.05 W/kg = 9.06 dBW/kg

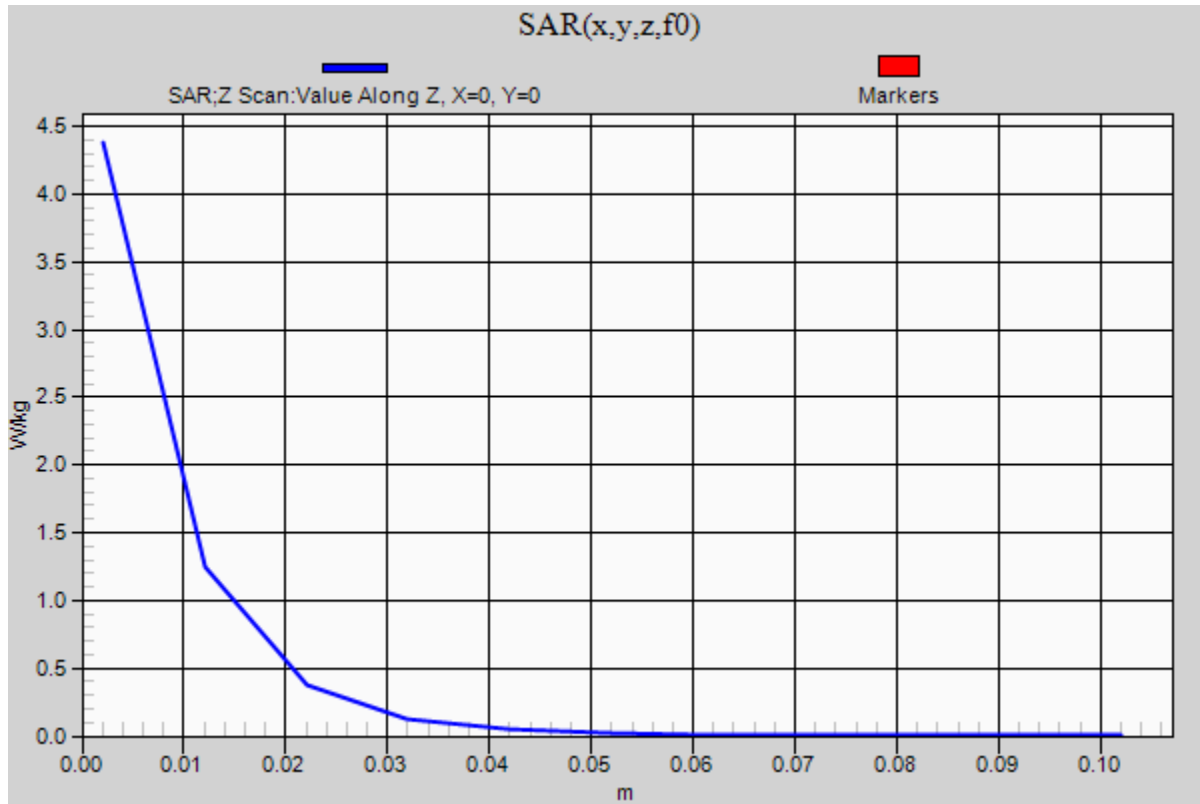
### 20150113\_System check\_Diple2450v2 SN728

Frequency: 2450 MHz; Duty Cycle: 1:1

**Body/Pin=100mW, d=10mm/Z Scan (1x1x11):** Measurement grid: dx=20mm, dy=20mm, dz=10mm

Info: [Interpolated medium parameters used for SAR evaluation.](#)

Maximum value of SAR (measured) = 4.38 W/kg



**20150304\_System check\_Diple2450v2 SN728**

Frequency: 2450 MHz; Duty Cycle: 1:1; Room Ambient Temperature: 24.0°C; Liquid Temperature: 23.5°C  
Medium parameters used (interpolated):  $f = 2450$  MHz;  $\sigma = 1.971$  S/m;  $\epsilon_r = 53.896$ ;  $\rho = 1000$  kg/m<sup>3</sup>

DASY5 Configuration:

- Area Scan Setting - Find Secondary Maximum Within: 2.0 dB and with a peak SAR value greater than 0.0012W/kg
- Electronics: DAE4 Sn877; Calibrated: 2014/03/26
- Probe: EX3DV4 - SN3665; ConvF(7.22, 7.22, 7.22); Calibrated: 2014/05/22;
- Sensor-Surface: 1.4mm (Mechanical Surface Detection)
- Phantom: ELI 4.0; Type: QDOVA001BA; Serial: 1056

**Body/Pin=100mW, d=10mm/Area Scan (7x9x1):** Measurement grid: dx=15mm, dy=15mm

[Info: Interpolated medium parameters used for SAR evaluation.](#)

Maximum value of SAR (measured) = 7.84 W/kg

**Body/Pin=100mW, d=10mm/Zoom Scan (7x7x7)/Cube 0:** Measurement grid: dx=5mm, dy=5mm, dz=5mm

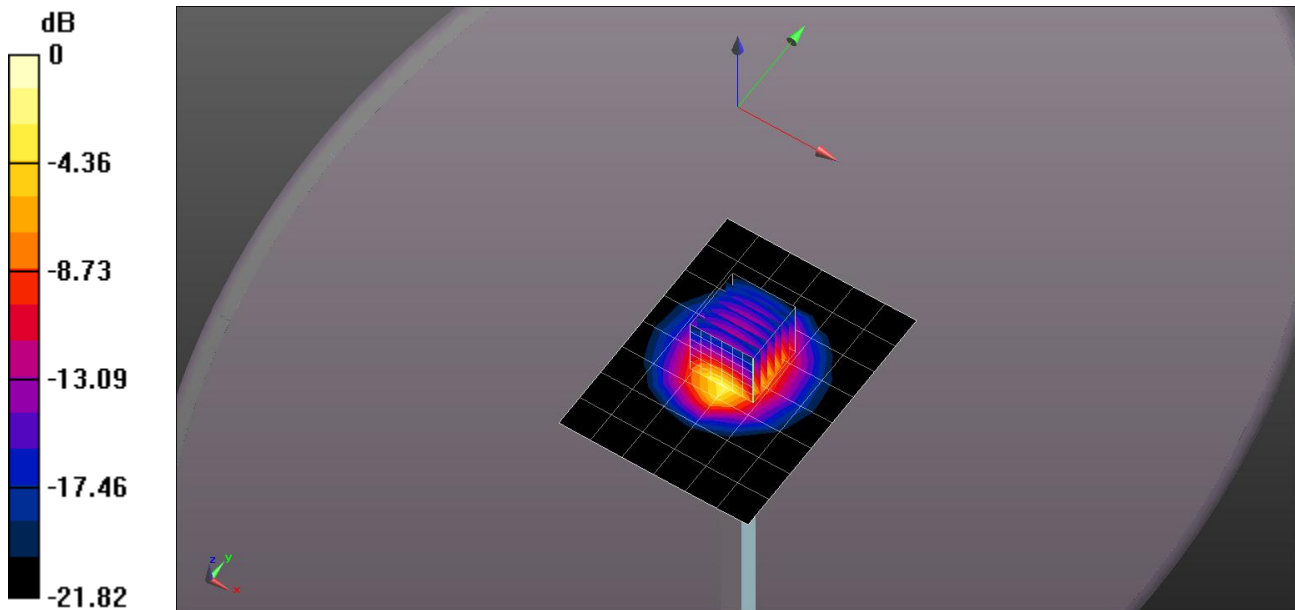
Reference Value = 64.59 V/m; Power Drift = -0.09 dB

Peak SAR (extrapolated) = 10.4 W/kg

**SAR(1 g) = 4.98 W/kg; SAR(10 g) = 2.32 W/kg**

[Info: Interpolated medium parameters used for SAR evaluation.](#)

Maximum value of SAR (measured) = 8.32 W/kg



0 dB = 8.32 W/kg = 9.20 dBW/kg

### 20150304\_System check\_Diple2450v2 SN728

Frequency: 2450 MHz; Duty Cycle: 1:1

**Body/Pin=100mW, d=10mm/Z Scan (1x1x11):** Measurement grid: dx=20mm, dy=20mm, dz=10mm

Info: [Interpolated medium parameters used for SAR evaluation.](#)

Maximum value of SAR (measured) = 4.52 W/kg

