

GSM1900

Frequency: 1880 MHz; Duty Cycle: 1:4.00037; Room Ambient Temperature: 24.0°C; Liquid Temperature: 23.0°C
Medium parameters used: $f = 1880$ MHz; $\sigma = 1.526$ mho/m; $\epsilon_r = 51.477$; $\rho = 1000$ kg/m³
DASY5 Configuration:

- Area Scan setting - Find Secondary Maximum Within: 2.0 dB and with a peak SAR value greater than 0.0012W/kg
- Electronics: DAE4 Sn1259; Calibrated: 2/13/2012
- Probe: EX3DV4 - SN3686; ConvF(7.04, 7.04, 7.04); Calibrated: 2/16/2012
- Sensor-Surface: 2.5mm (Mechanical Surface Detection)
- Phantom: ELI v5.0 (A); Type: QDOVA001BB; Serial: 1120

Body/Rear/GPRS 2 Slots/0mm/Ch661/Area Scan (9x18x1): Measurement grid: dx=15mm, dy=15mm
Maximum value of SAR (measured) = 0.188 mW/g

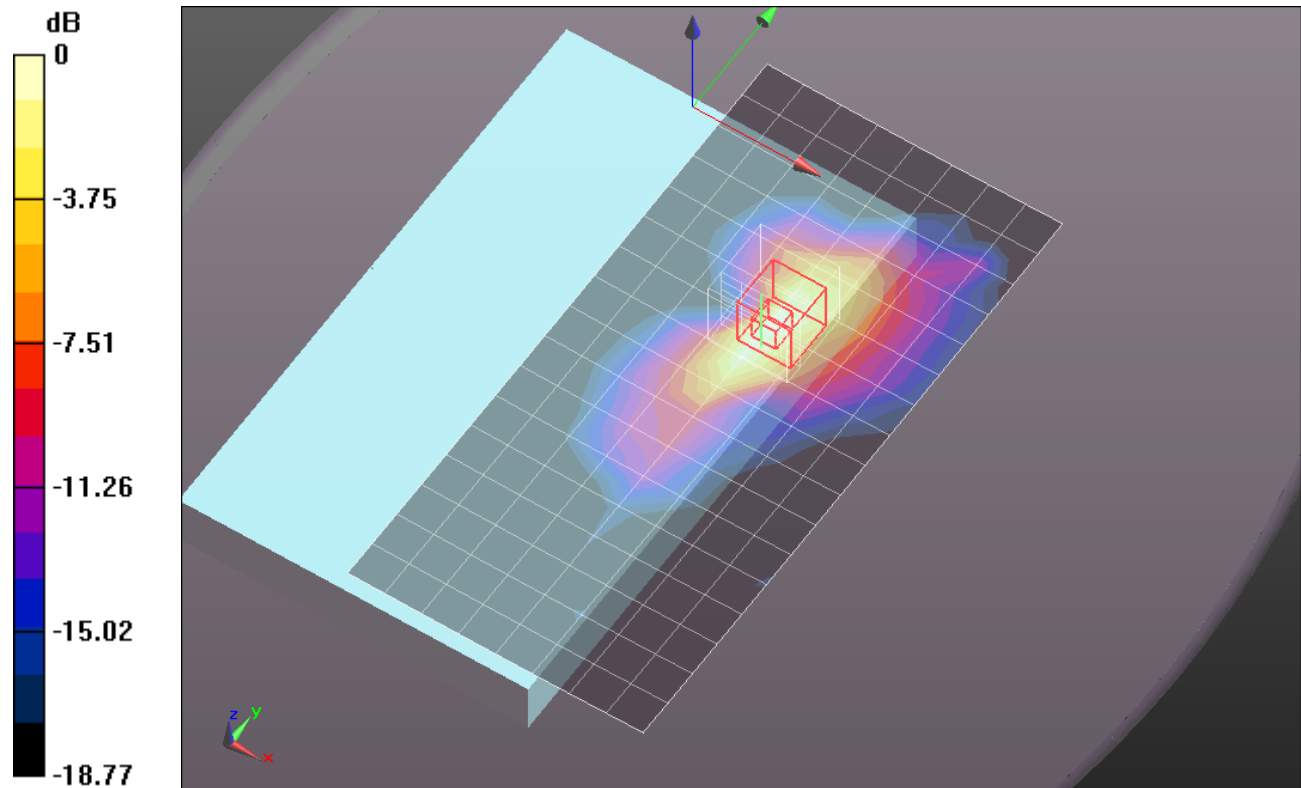
Body/Rear/GPRS 2 Slots/0mm/Ch661/Zoom Scan (5x5x7)/Cube 0: Measurement grid: dx=8mm, dy=8mm, dz=5mm

Reference Value = 11.510 V/m; Power Drift = 0.03 dB

Peak SAR (extrapolated) = 0.2470

SAR(1 g) = 0.134 mW/g; SAR(10 g) = 0.067 mW/g

Maximum value of SAR (measured) = 0.190 mW/g



0 dB = 0.190mW/g = -14.42 dB mW/g

GSM1900

Frequency: 1880 MHz; Duty Cycle: 1:4.00037; Room Ambient Temperature: 24.0°C; Liquid Temperature: 23.0°C
Medium parameters used: $f = 1880$ MHz; $\sigma = 1.483$ mho/m; $\epsilon_r = 51.819$; $\rho = 1000$ kg/m³
DASY5 Configuration:

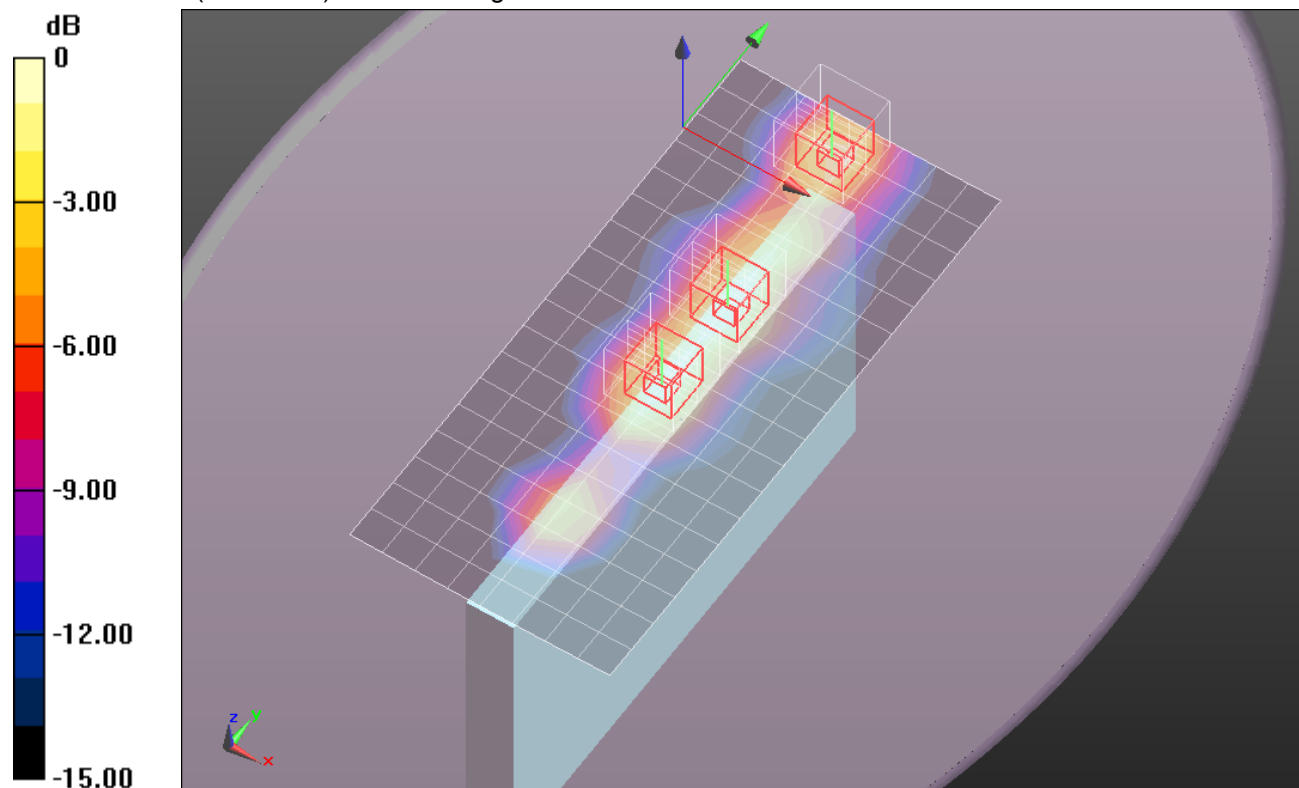
- Area Scan setting - Find Secondary Maximum Within: 2.0 dB and with a peak SAR value greater than 0.0012W/kg
- Electronics: DAE4 Sn1259; Calibrated: 2/13/2012
- Probe: EX3DV4 - SN3686; ConvF(7.04, 7.04, 7.04); Calibrated: 2/16/2012
- Sensor-Surface: 2.5mm (Mechanical Surface Detection)
- Phantom: ELI v5.0 (A); Type: QDOVA001BB; Serial: 1120

Body/Edge 1/GPRS 2 Slots/0mm/Ch661/Area Scan (9x19x1): Measurement grid: dx=15mm, dy=15mm
Maximum value of SAR (measured) = 0.266 mW/g

Body/Edge 1/GPRS 2 Slots/0mm/Ch661/Zoom Scan (5x5x7)/Cube 0: Measurement grid: dx=8mm, dy=8mm, dz=5mm
Reference Value = 13.683 V/m; Power Drift = -0.11 dB
Peak SAR (extrapolated) = 0.3980
SAR(1 g) = 0.221 mW/g; SAR(10 g) = 0.111 mW/g
Maximum value of SAR (measured) = 0.295 mW/g

Body/Edge 1/GPRS 2 Slots/0mm/Ch661/Zoom Scan (5x5x7)/Cube 1: Measurement grid: dx=8mm, dy=8mm, dz=5mm
Reference Value = 13.683 V/m; Power Drift = -0.11 dB
Peak SAR (extrapolated) = 0.2950
SAR(1 g) = 0.182 mW/g; SAR(10 g) = 0.105 mW/g
Maximum value of SAR (measured) = 0.233 mW/g

Body/Edge 1/GPRS 2 Slots/0mm/Ch661/Zoom Scan (5x5x7)/Cube 2: Measurement grid: dx=8mm, dy=8mm, dz=5mm
Reference Value = 13.683 V/m; Power Drift = -0.11 dB
Peak SAR (extrapolated) = 0.2820
SAR(1 g) = 0.170 mW/g; SAR(10 g) = 0.095 mW/g
Maximum value of SAR (measured) = 0.217 mW/g



0 dB = 0.220mW/g = -13.15 dB mW/g

GSM1900

Frequency: 1880 MHz; Duty Cycle: 1:4.00037; Room Ambient Temperature: 24.0°C; Liquid Temperature: 23.0°C
Medium parameters used: $f = 1880$ MHz; $\sigma = 1.526$ mho/m; $\epsilon_r = 51.477$; $\rho = 1000$ kg/m³
DASY5 Configuration:

- Area Scan setting - Find Secondary Maximum Within: 2.0 dB and with a peak SAR value greater than 0.0012W/kg
- Electronics: DAE4 Sn1259; Calibrated: 2/13/2012
- Probe: EX3DV4 - SN3686; ConvF(7.04, 7.04, 7.04); Calibrated: 2/16/2012
- Sensor-Surface: 2.5mm (Mechanical Surface Detection)
- Phantom: ELI v5.0 (A); Type: QDOVA001BB; Serial: 1120

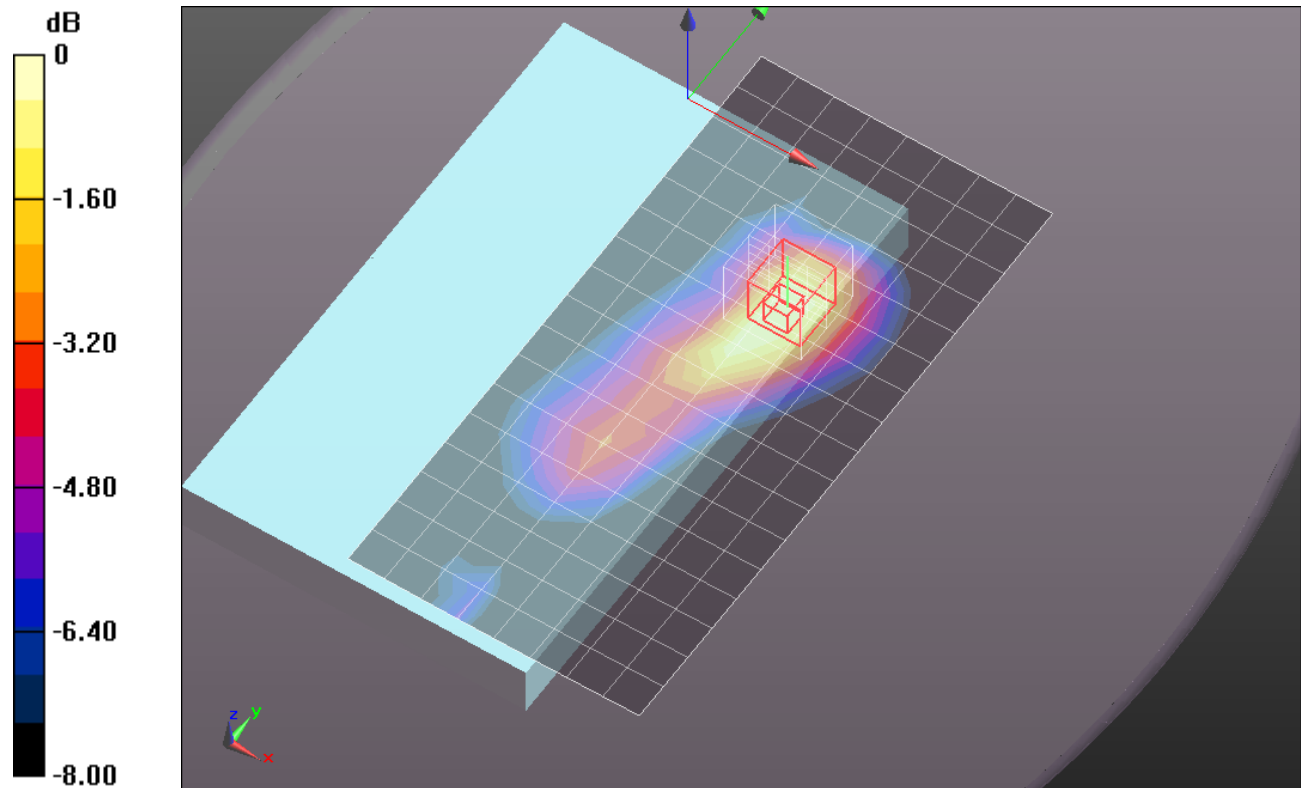
Body/Rear/GPRS 2 Slots/10mm/Ch661/Area Scan (9x18x1): Measurement grid: dx=15mm, dy=15mm
Maximum value of SAR (measured) = 0.089 mW/g

Body/Rear/GPRS 2 Slots/10mm/Ch661/Zoom Scan (5x5x7)/Cube 0: Measurement grid: dx=8mm, dy=8mm, dz=5mm

Reference Value = 7.592 V/m; Power Drift = 0.15 dB
Peak SAR (extrapolated) = 0.1330

SAR(1 g) = 0.080 mW/g; SAR(10 g) = 0.046 mW/g

Maximum value of SAR (measured) = 0.096 mW/g



0 dB = 0.100mW/g = -20.00 dB mW/g

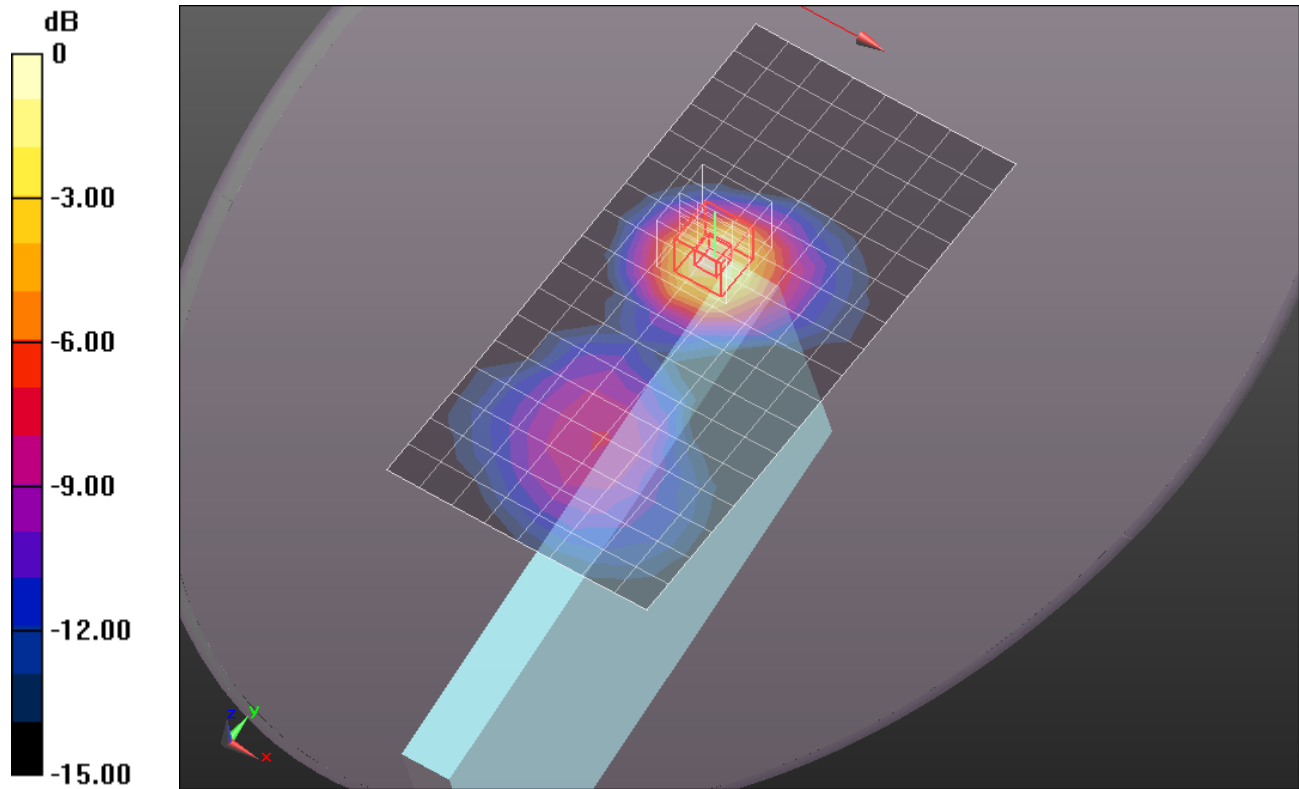
GSM1900

Frequency: 1880 MHz; Duty Cycle: 1:4.00037; Room Ambient Temperature: 24.0°C; Liquid Temperature: 23.0°C
Medium parameters used: $f = 1880$ MHz; $\sigma = 1.526$ mho/m; $\epsilon_r = 51.477$; $\rho = 1000$ kg/m³
DASY5 Configuration:

- Area Scan setting - Find Secondary Maximum Within: 2.0 dB and with a peak SAR value greater than 0.0012W/kg
- Electronics: DAE4 Sn1259; Calibrated: 2/13/2012
- Probe: EX3DV4 - SN3686; ConvF(7.04, 7.04, 7.04); Calibrated: 2/16/2012
- Sensor-Surface: 2.5mm (Mechanical Surface Detection)
- Phantom: ELI v5.0 (A); Type: QDOVA001BB; Serial: 1120

Body/Edge 1 @ 15 degree tilt/GPRS 2 Slots/0mm/Ch661/Area Scan (9x18x1): Measurement
grid: dx=15mm, dy=15mm
Maximum value of SAR (measured) = 0.300 mW/g

Body/Edge 1 @ 15 degree tilt/GPRS 2 Slots/0mm/Ch661/Zoom Scan (5x5x7)/Cube 0:
Measurement grid: dx=8mm, dy=8mm, dz=5mm
Reference Value = 14.111 V/m; Power Drift = -0.14 dB
Peak SAR (extrapolated) = 0.4020
SAR(1 g) = 0.243 mW/g; SAR(10 g) = 0.135 mW/g
Maximum value of SAR (measured) = 0.314 mW/g



0 dB = 0.310mW/g = -10.17 dB mW/g

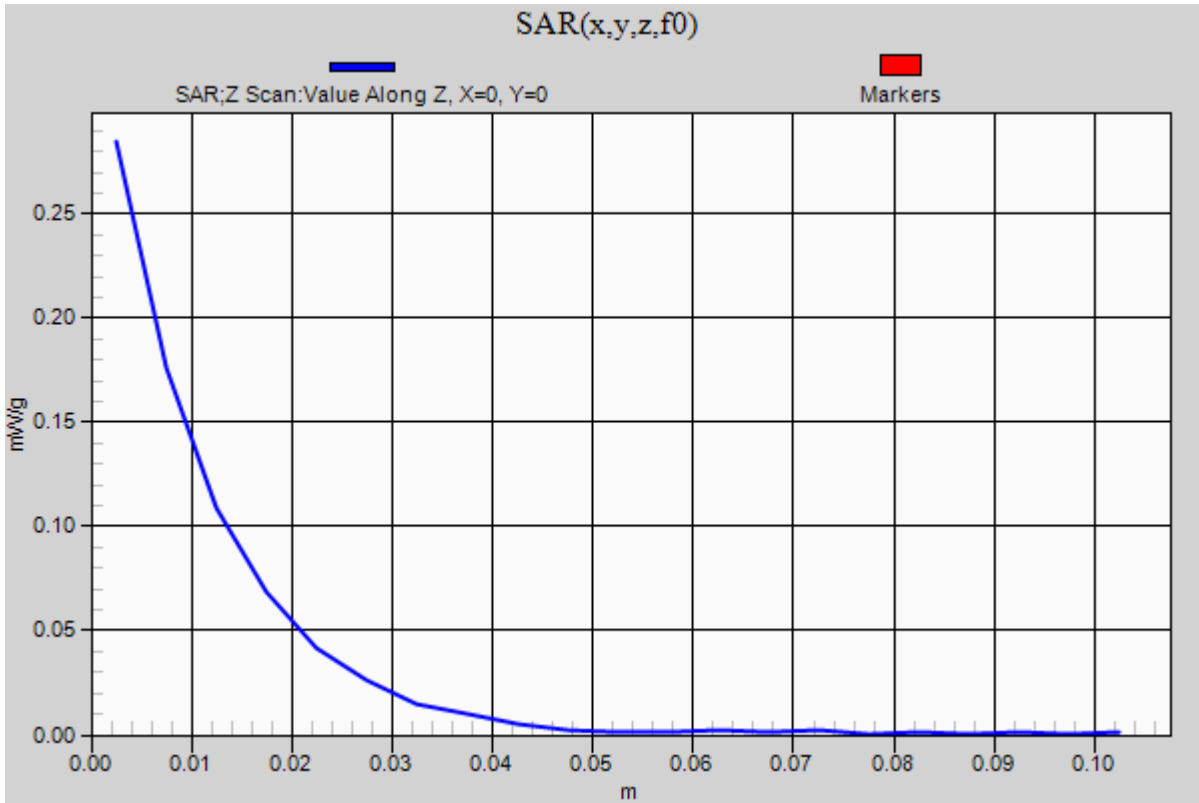
GSM1900

Frequency: 1880 MHz; Duty Cycle: 1:4.00037

Body/Edge 1 @ 15 degree tilt/GPRS 2 Slots/0mm/Ch661/Z Scan (1x1x21): Measurement grid:

dx=20mm, dy=20mm, dz=5mm

Maximum value of SAR (measured) = 0.285 mW/g



GSM1900

Frequency: 1880 MHz; Duty Cycle: 1:4.00037; Room Ambient Temperature: 24.0°C; Liquid Temperature: 23.0°C

Medium parameters used: $f = 1880$ MHz; $\sigma = 1.483$ mho/m; $\epsilon_r = 51.819$; $\rho = 1000$ kg/m³

DASY5 Configuration:

- Area Scan setting - Find Secondary Maximum Within: 2.0 dB and with a peak SAR value greater than 0.0012W/kg
- Electronics: DAE4 Sn1259; Calibrated: 2/13/2012
- Probe: EX3DV4 - SN3686; ConvF(7.04, 7.04, 7.04); Calibrated: 2/16/2012
- Sensor-Surface: 2.5mm (Mechanical Surface Detection)
- Phantom: ELI v5.0 (A); Type: QDOVA001BB; Serial: 1120

Body/Edge 1/GPRS 2 Slots/10mm/Ch661/Area Scan (9x20x1): Measurement grid: dx=15mm, dy=15mm

Maximum value of SAR (measured) = 0.179 mW/g

Body/Edge 1/GPRS 2 Slots/10mm/Ch661/Zoom Scan (5x5x7)/Cube 0: Measurement grid:

dx=8mm, dy=8mm, dz=5mm

Reference Value = 11.112 V/m; Power Drift = -0.03 dB

Peak SAR (extrapolated) = 0.2350

SAR(1 g) = 0.154 mW/g; SAR(10 g) = 0.093 mW/g

Maximum value of SAR (measured) = 0.191 mW/g

Body/Edge 1/GPRS 2 Slots/10mm/Ch661/Zoom Scan (5x5x7)/Cube 1: Measurement grid:

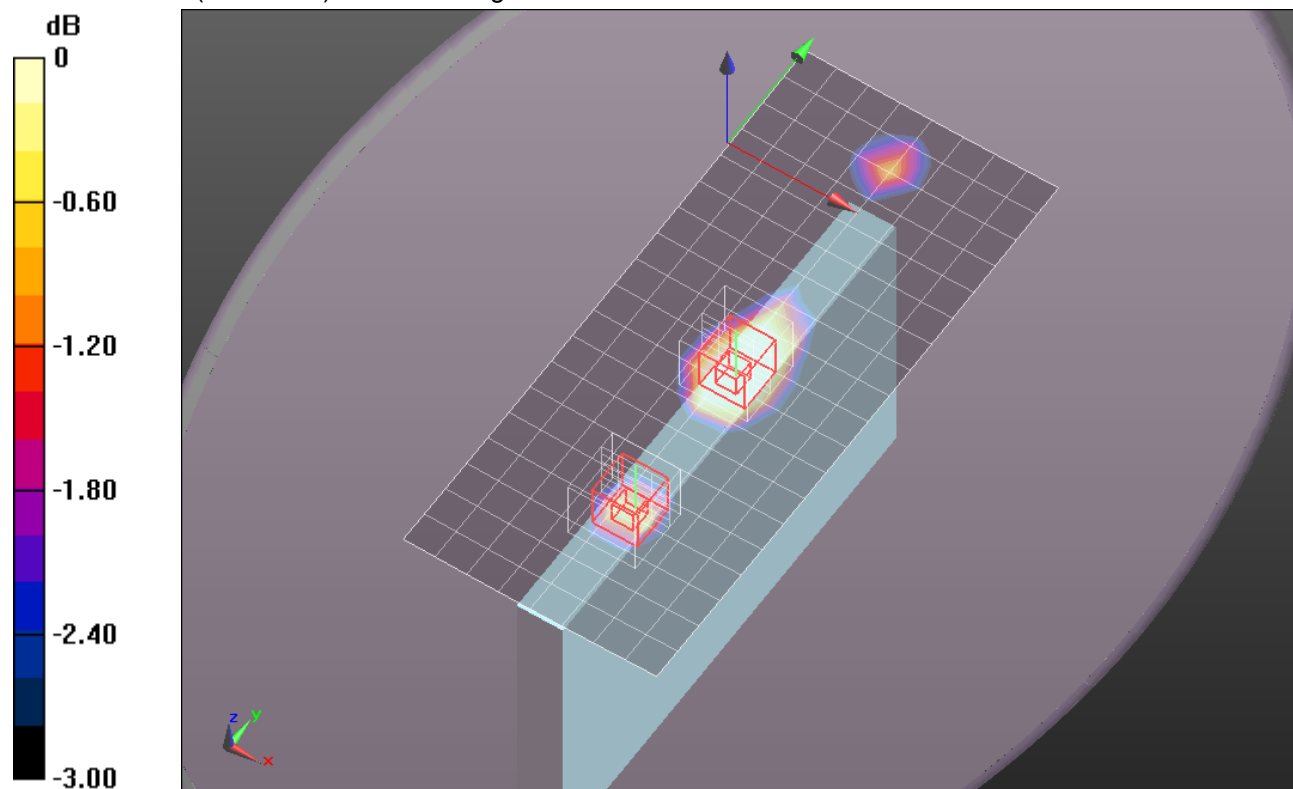
dx=8mm, dy=8mm, dz=5mm

Reference Value = 11.112 V/m; Power Drift = -0.03 dB

Peak SAR (extrapolated) = 0.1700

SAR(1 g) = 0.109 mW/g; SAR(10 g) = 0.066 mW/g

Maximum value of SAR (measured) = 0.135 mW/g



0 dB = 0.130mW/g = -17.72 dB mW/g

GSM1900

Frequency: 1880 MHz; Duty Cycle: 1:4.00037; Room Ambient Temperature: 24.0°C; Liquid Temperature: 23.0°C
Medium parameters used: $f = 1880$ MHz; $\sigma = 1.483$ mho/m; $\epsilon_r = 51.819$; $\rho = 1000$ kg/m³

DASY5 Configuration:

- Area Scan setting - Find Secondary Maximum Within: 2.0 dB and with a peak SAR value greater than 0.0012W/kg
- Electronics: DAE4 Sn1259; Calibrated: 2/13/2012
- Probe: EX3DV4 - SN3686; ConvF(7.04, 7.04, 7.04); Calibrated: 2/16/2012
- Sensor-Surface: 2.5mm (Mechanical Surface Detection)
- Phantom: ELI v5.0 (A); Type: QDOVA001BB; Serial: 1120

Body/Edge 1/GPRS 2 Slots/10mm/Ch661/Area Scan (9x20x1): Measurement grid: dx=15mm, dy=15mm

Maximum value of SAR (measured) = 0.179 mW/g

Body/Edge 1/GPRS 2 Slots/10mm/Ch661/Zoom Scan (5x5x7)/Cube 0: Measurement grid:

dx=8mm, dy=8mm, dz=5mm

Reference Value = 11.112 V/m; Power Drift = -0.03 dB

Peak SAR (extrapolated) = 0.2350

SAR(1 g) = 0.154 mW/g; SAR(10 g) = 0.093 mW/g

Maximum value of SAR (measured) = 0.191 mW/g

Body/Edge 1/GPRS 2 Slots/10mm/Ch661/Zoom Scan (5x5x7)/Cube 1: Measurement grid:

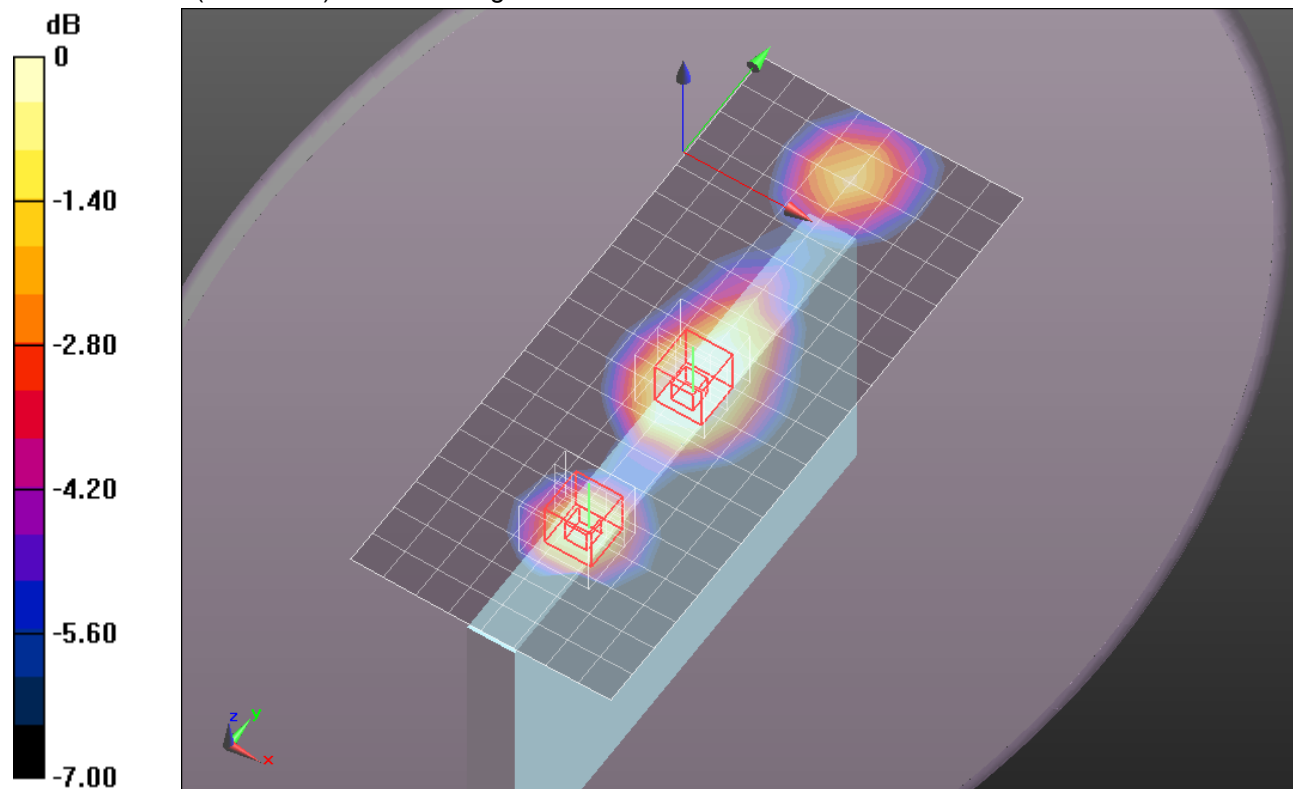
dx=8mm, dy=8mm, dz=5mm

Reference Value = 11.112 V/m; Power Drift = -0.03 dB

Peak SAR (extrapolated) = 0.1700

SAR(1 g) = 0.109 mW/g; SAR(10 g) = 0.066 mW/g

Maximum value of SAR (measured) = 0.135 mW/g



0 dB = 0.130mW/g = -17.72 dB mW/g

GSM1900

Frequency: 1880 MHz; Duty Cycle: 1:4.00037

Body/Edge 1/GPRS 2 Slots/10mm/Ch661/Z Scan (1x1x21): Measurement grid: dx=20mm, dy=20mm, dz=5mm

Maximum value of SAR (measured) = 0.180 mW/g

