

Model Name: Edison L1



Smart Bulb Socket App

Workflow design

Version: 0.2.0

Date: 2017.06.15

Author: Heather Lien

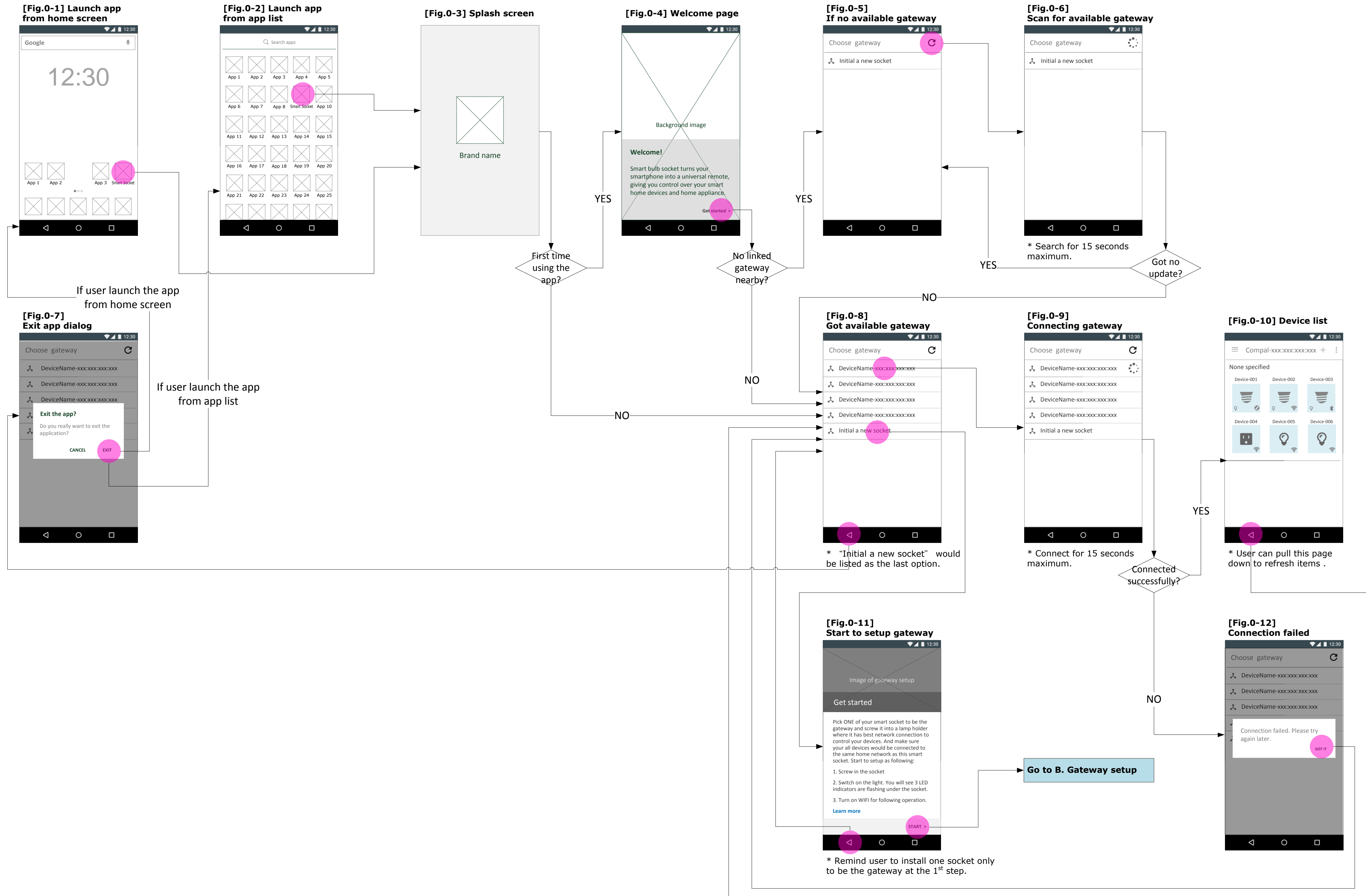
EID-ID-PD3 | **CONFIDENTIAL**

***Notice** : This file is the schematic representation for the **behavioral process** of target application. All screenshots here are for reference only. **Any GUI layout problems, please check the related visual document.**

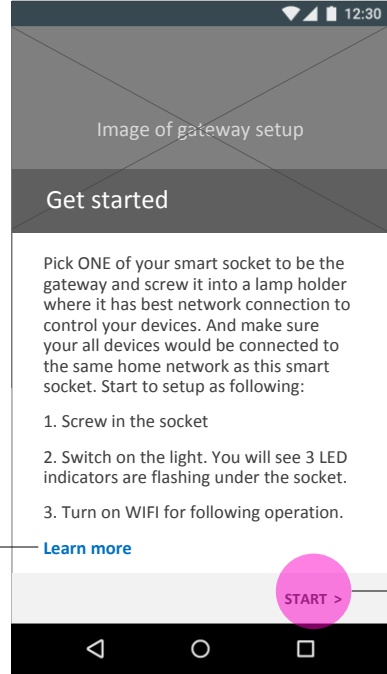
Revised History

Version	Date	Comment	Author
0.1.0	2017.03.13	Initial version for smart bulb socket app 1.0	Heather Lien
0.1.1	2017.03.20	Updated as following: 1. Remove “Add other brand device(s)” . This part has been modified into the part of “add socket(s)” . 2. [ISSUE 1] Remove light bulb status in the device list because current bulb status could not be detected by socket. -> User would be confused why they are still allowed to tap device to switch on/off the socket even there is no bulb screwed into the lamp holder. 3. Remove “login” and “speaker” features due to these parts would not be implemented at phase 1. 4. [ISSUE 2] Add “bulb brightness” settings into device detail (Requested by JoeCN Chen). -> A scrollable warning dialog is required here due to the bulb brightness settings is available for few specified bulbs only. And user would also confused about what kind of bulb could be use?	Heather Lien
0.1.2	2017.03.28	Updated as following: 1. Added judgments for checking if the mobile used before, and to detect any existed gateway/devices for gateway setup and device added. 2. Updated the device detail pages. 3. Updated the items for option menu. 4. Updated the features of the navigation drawer.	Heather Lien
0.1.3	2017.04.10	Updated as following: 1. [A. Gateway setup] Updated UI scenario between splash screen and start to gateway setup page/device list page. Remove the judgments that added in v0.1.2. 2. NEW-[C-2. Device control - Other brand devices] Added 3 rd party device control UI definition for other brand devices. 3. [D. Navigation drawer UI + Overflow UI menu (Option menu)] Updated UI scenario for after gateway resetting.	Heather Lien
0.2.0	2017.06.15	Updated as following: 1. Added new page - [A. Launch app and exit app] 2. Updated the device detail pages. 3. Added screens for these scenarios: No Wi-Fi networks available, Gateway version/update, check app version/update.	Heather Lien

- A. Launch app and exit app
- B. Gateway setup
- C. Add device(s)
- D-1. Device control - Compal socket
- D-2. Device control - Other brand devices
- E. Navigation drawer UI + Overflow UI menu (Option menu)

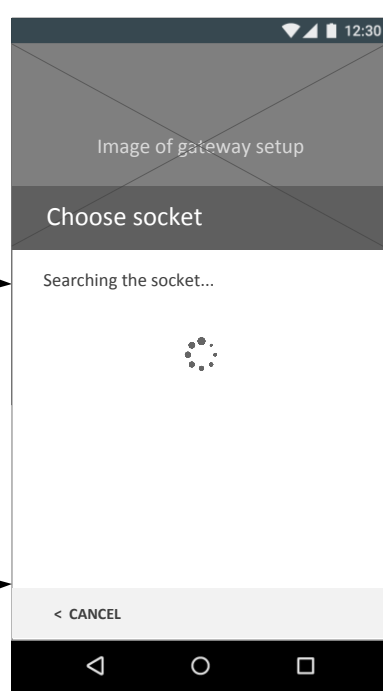


[Fig.1-1] Start to setup gateway



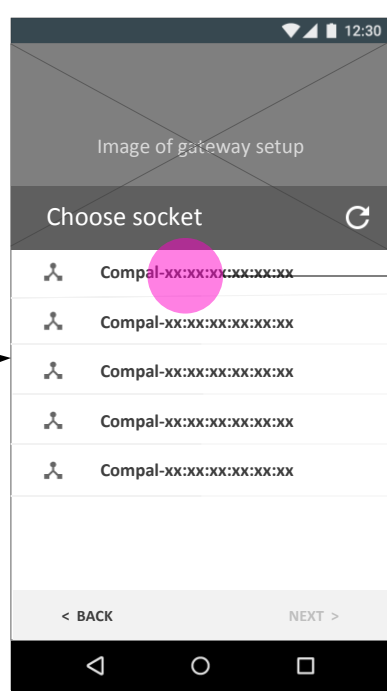
* Remind user to install one socket only to be the gateway at the 1st step.

[Fig.1-2] Find socket



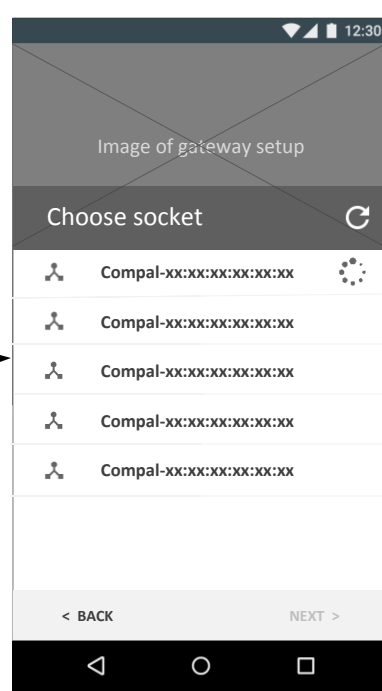
* Searching for 15 seconds maximum. * Press "CANCEL" or < will go to [Fig.1-1].

[Fig.1-3] Choose socket



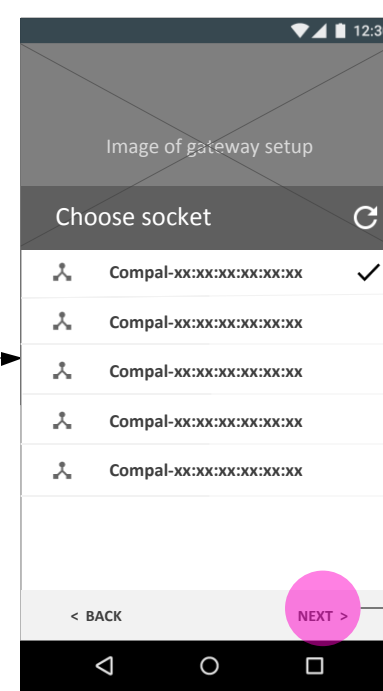
* Only Compal socket would be listed here. * Press "BACK" or < will go to [Fig.1-1].

[Fig.1-4] Socket connecting



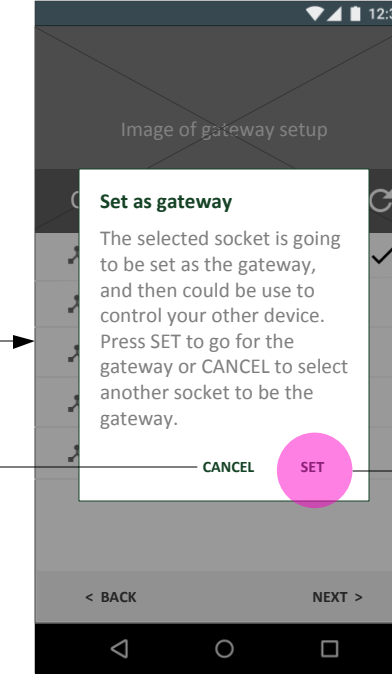
* A processing icon would appear on the right side of the row when the item has been chosen to select. * Press "BACK" or < will go to [Fig.1-1].

[Fig.1-5] Socket selected



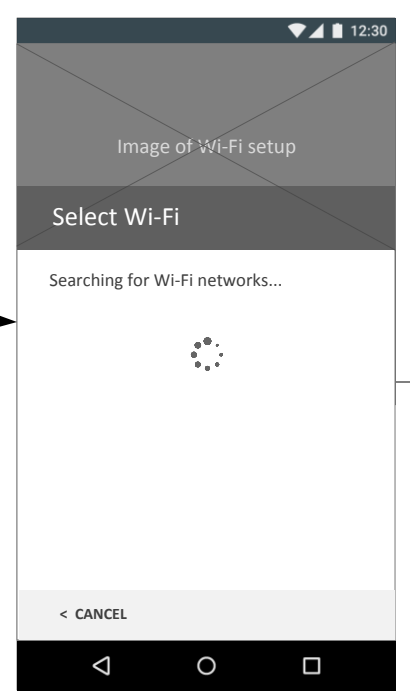
* "NEXT" becomes enable after one socket is selected. * Press "BACK" or < will go to [Fig.1-1].

[Fig.1-6] Set as gateway dialog



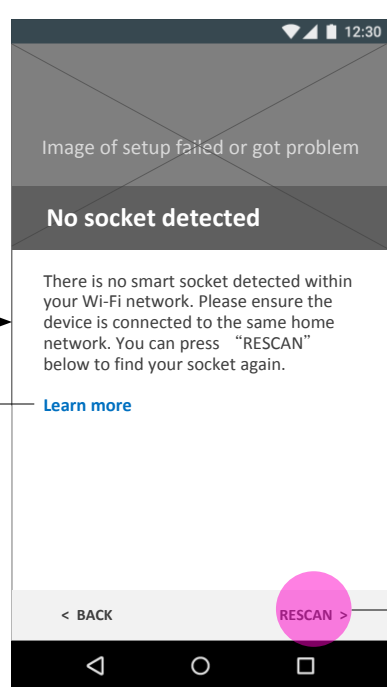
Go to [Fig.1-3] Choose socket

[Fig.1-7] Search Wi-Fi



* Searching for 15 seconds maximum. * Press "CANCEL" or < will go to [Fig.1-5].

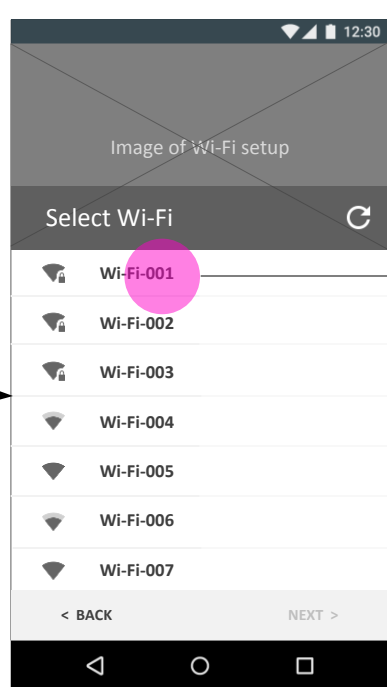
[Fig.1-8] No socket detected



* Press "BACK" or < will go to [Fig.1-1].

Any Wi-Fi detected?

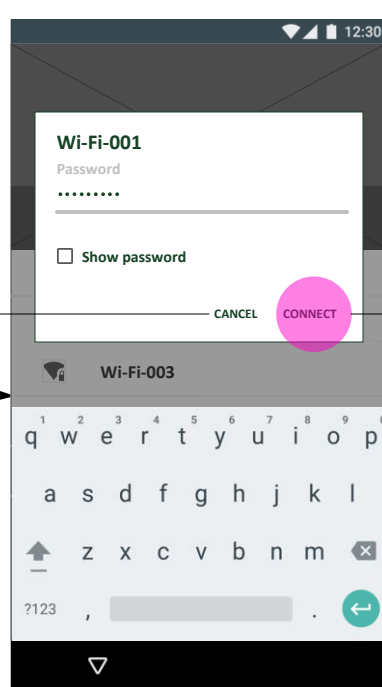
[Fig.1-9] Select Wi-Fi



* Press "BACK" or < will go to [Fig.1-5].

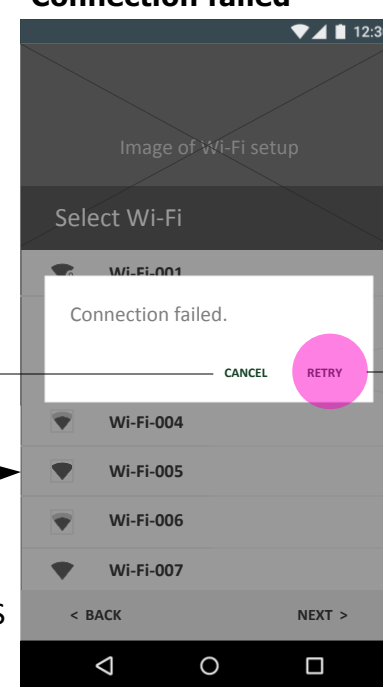
Password required?

[Fig.1-10] Pwd required



Password incorrect?

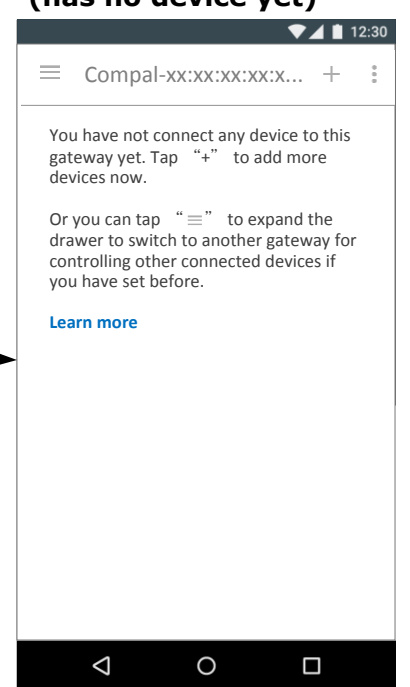
[Fig.1-11] Connection failed



Connection successful?

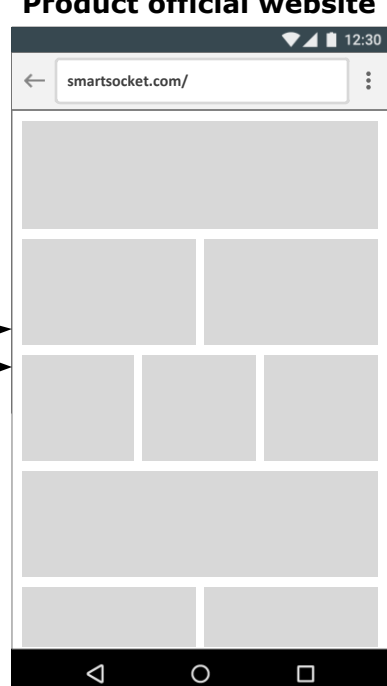
Is it a brand new gateway?

[Fig.1-12] Device List (has no device yet)



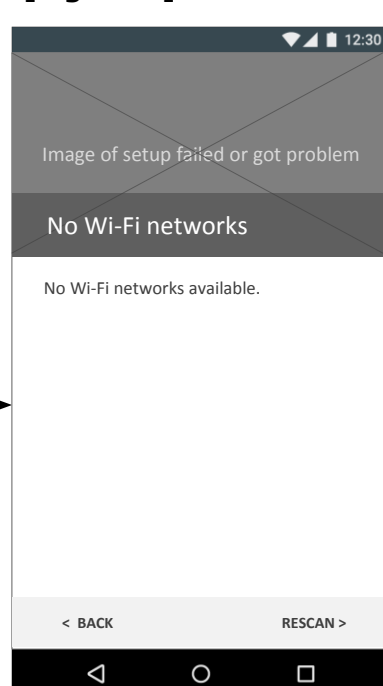
* This frame also applied to the use case of a connected gateway but has no other connected devices yet.

[Fig.1-13] Product official website



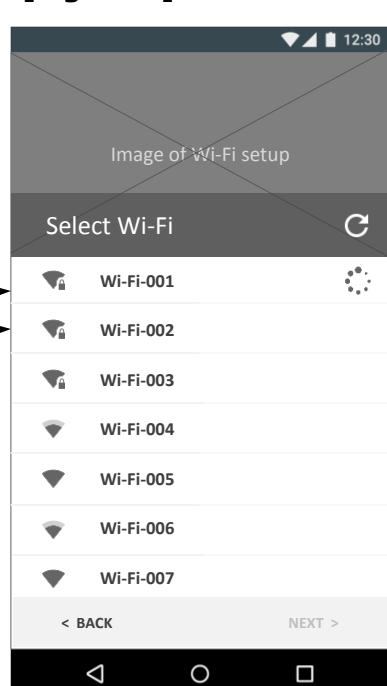
* [TBD] Content would be provided by client.

[Fig.1-14] No Wi-Fi



* Press "BACK" or < will go to [Fig.1-5]. * Press "RESCAN" will go to [Fig.1-7].

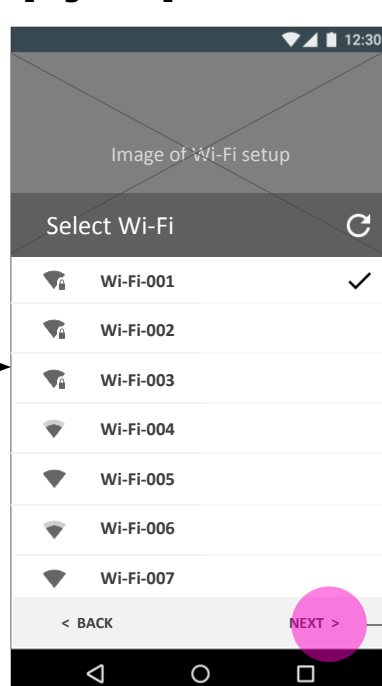
[Fig.1-15] Wi-Fi connecting



* A connecting icon would appear on the right side of the row. * Press "BACK" or < will go to [Fig.1-5].

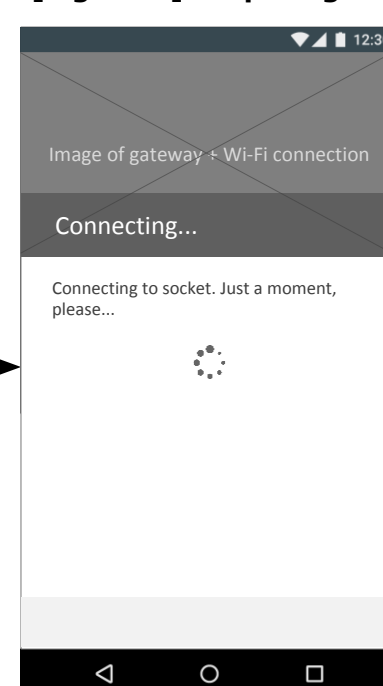
Connection successful?

[Fig.1-16] Wi-Fi connected



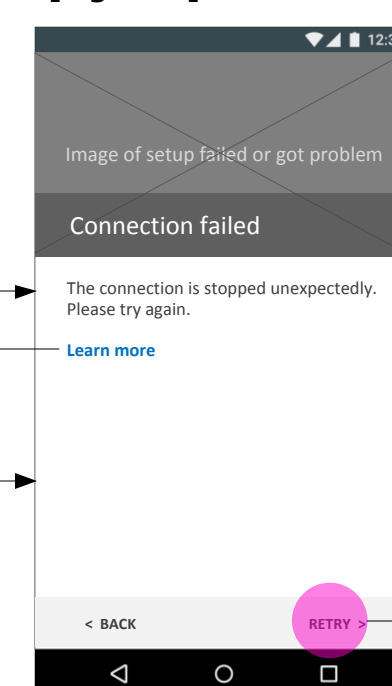
* Press "BACK" or < will go to [Fig.1-5].

[Fig.1-17] Preparing



* Searching for 15 seconds maximum.

[Fig.1-18] Connection failed



* Press "BACK" or < will go to [Fig.1-5].

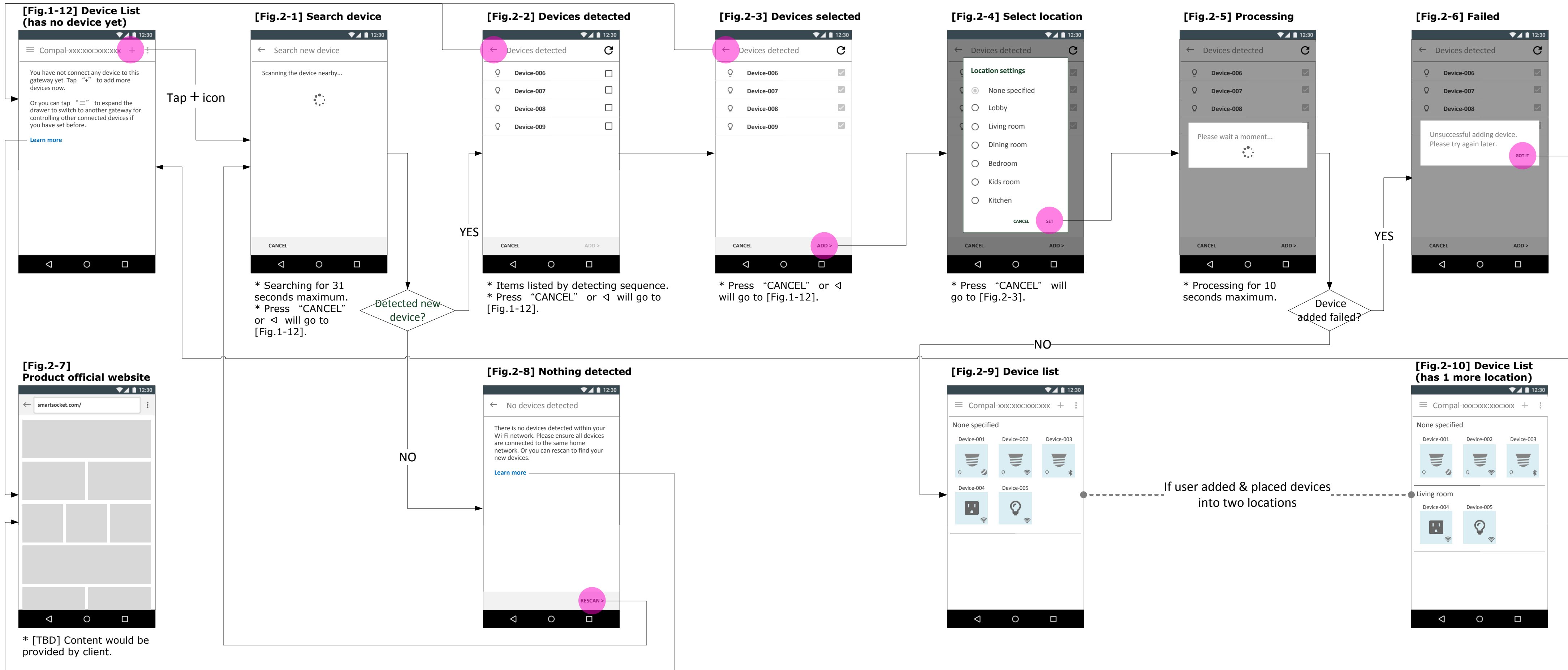
Go to [Fig.1-13] Product official website

[Fig.1-19] Device List (already connect to devices)

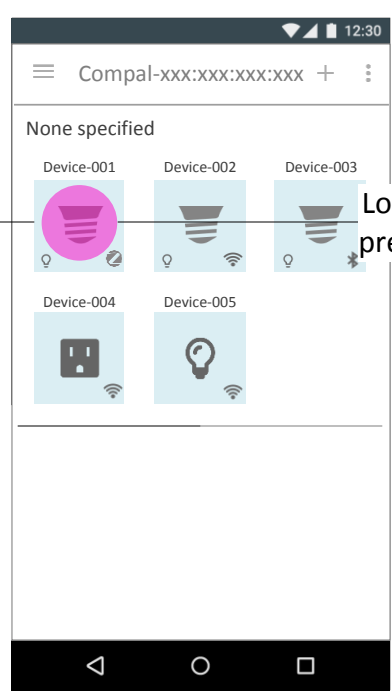


* User can pull this page down to refresh items.

Go to [Fig.1-1] Start to setup gateway

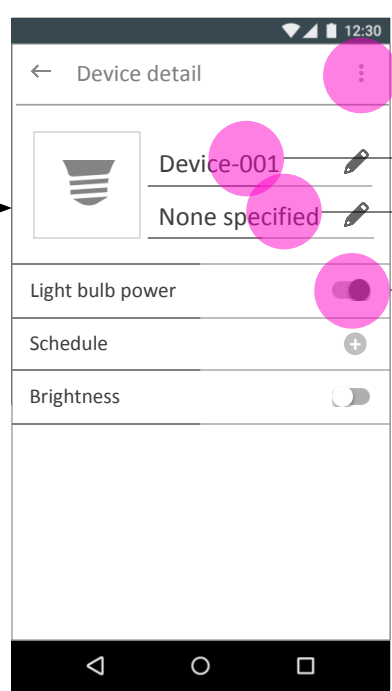


[Fig.2-9] Device list



Tap
* Long press item to open the device detail; single tap to switch on/off the device.

[Fig.3-1] Device detail

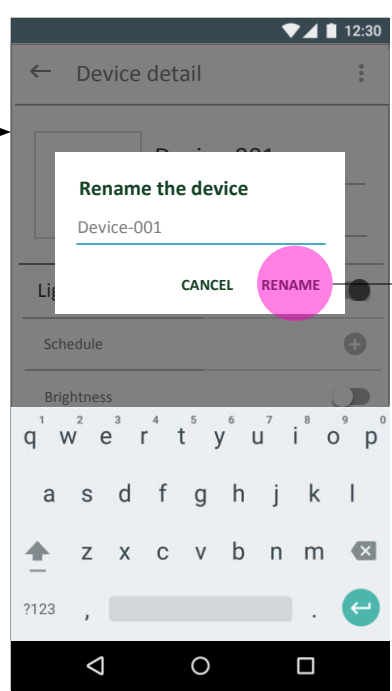


Switch off the light bulb

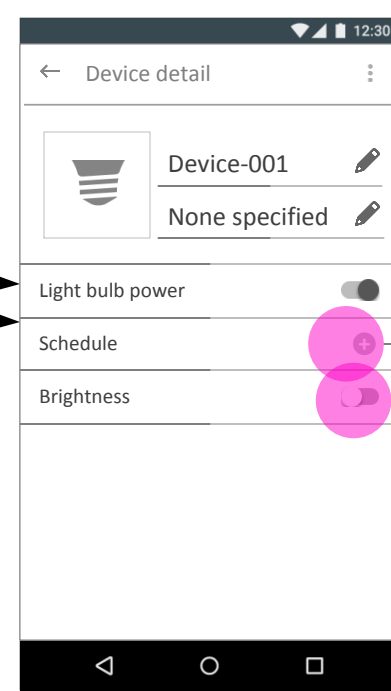
Tap Device name

Tap device Location /group

[Fig.3-2] Edit device name

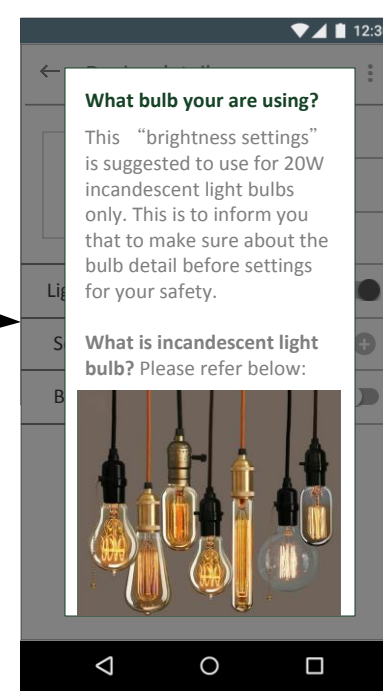


[Fig.3-3] Device detail



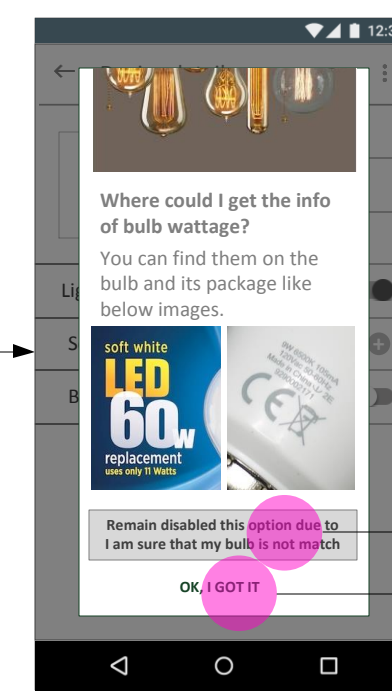
Brightness settings

[Fig.3-4] Warning dialog



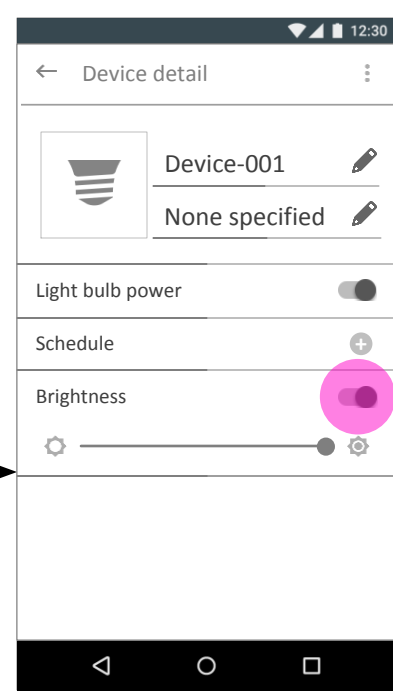
* This dialog would popup every time when user switch on the brightness settings.

[Fig.3-5] Warning dialog



[ISSUE 2] A scrollable warning dialog is required here due to the bulb brightness settings is available for few specified bulbs only. And user would confused about what kind of bulb could be use.

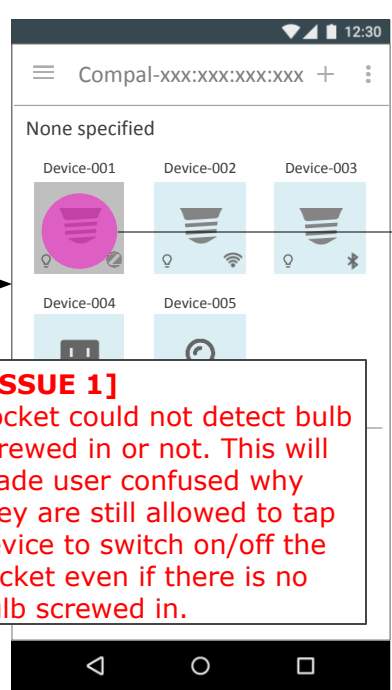
[Fig.3-6] Device detail



Switch off brightness settings

Go to [Fig.3-3] Device detail

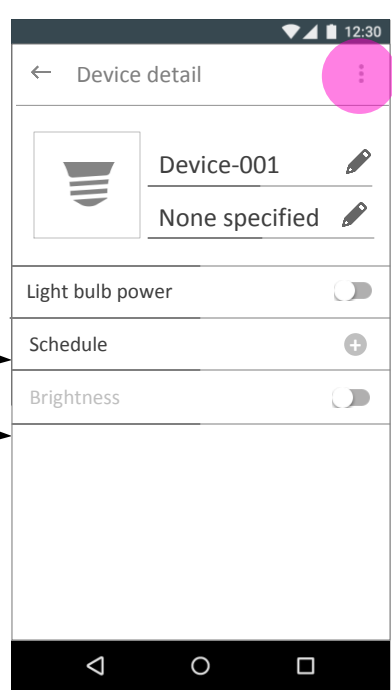
[Fig.3-7] Device list



[ISSUE 1] Socket could not detect bulb screwed in or not. This will made user confused why they are still allowed to tap device to switch on/off the socket even if there is no bulb screwed in.

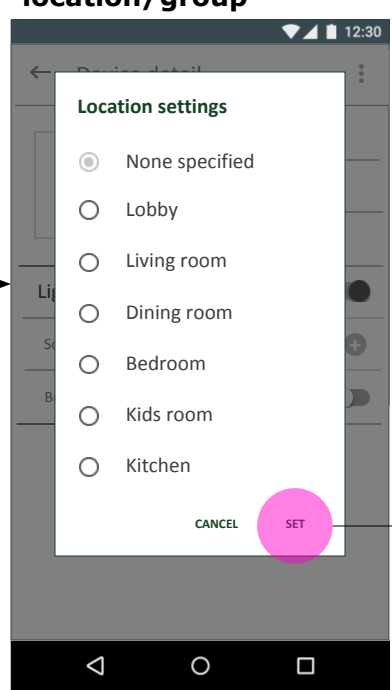
* Single tap to switch on/off for the power of bulb/device, even if there is no bulb screwed into the socket. Power on - Light blue bg Power off - Grey bg

[Fig.3-8] Switch off bulb



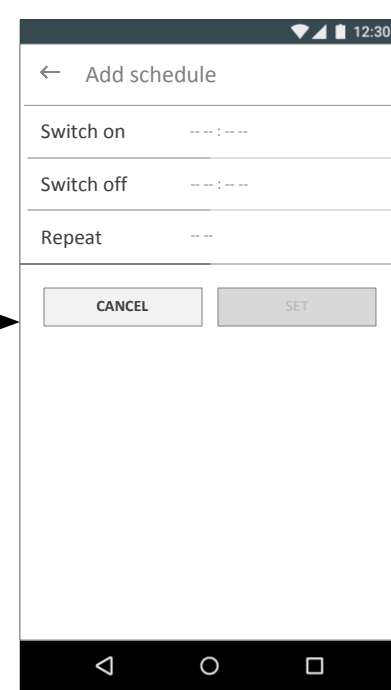
* Schedule is still editable when the light bulb power is off, but brightness is unable to switch on/off at this moment.

[Fig.3-9] Edit device location/group



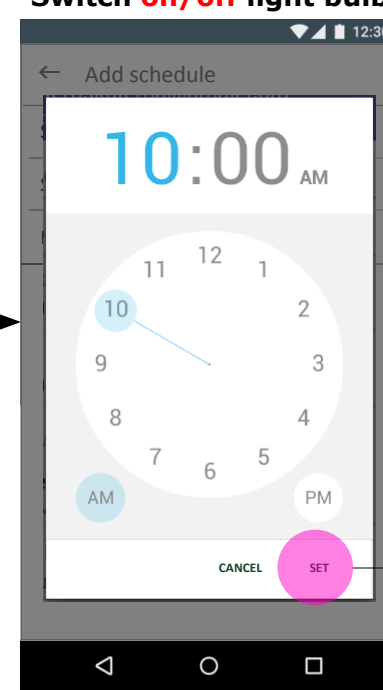
Expand the option menu

[Fig.3-10] Add schedule



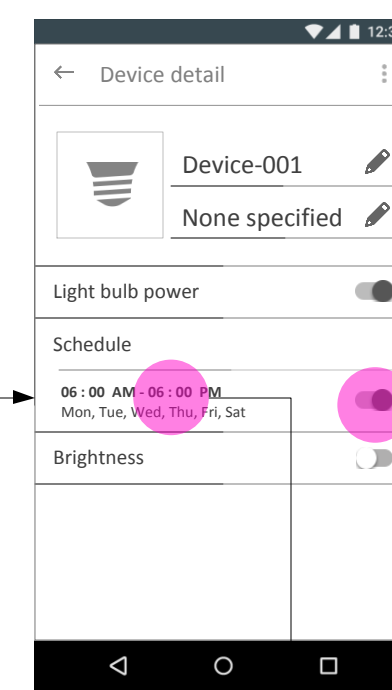
Tap switch on/off

[Fig.3-11] Time settings



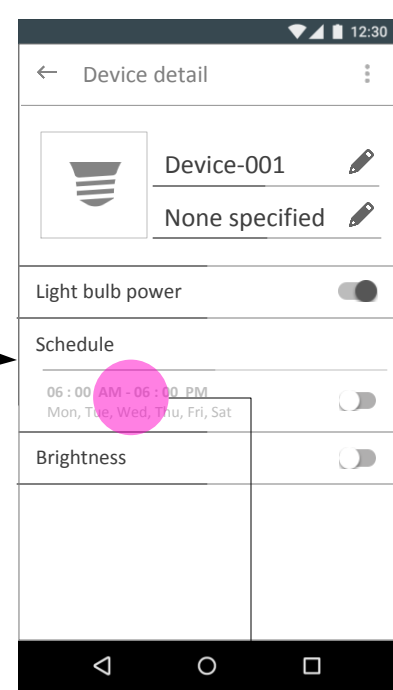
* This dialog also applied to "switch off light bulb at..."

[Fig.3-12] Device detail



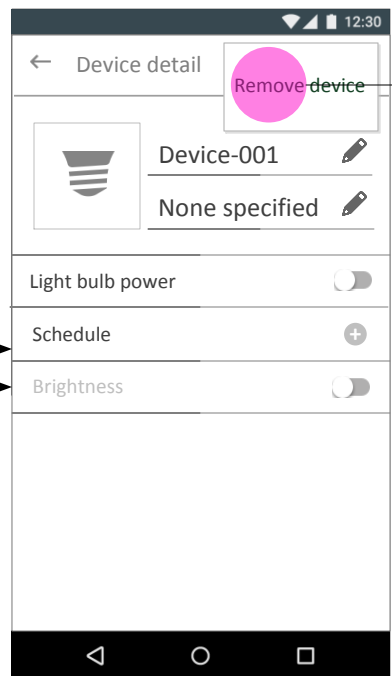
Tap to edit schedule

[Fig.3-13] Device detail

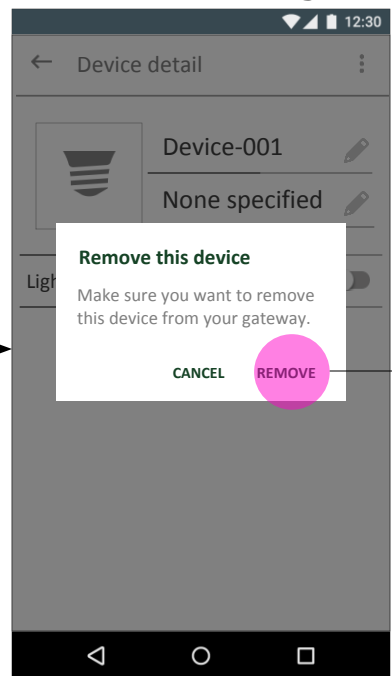


* The off state schedule would be switched on automatically after saving the updated.

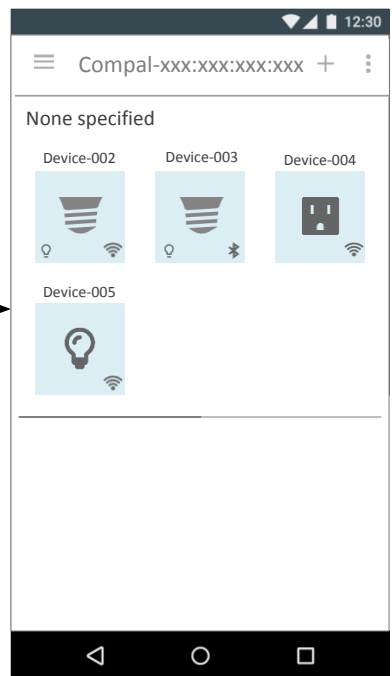
[Fig.3-14] Remove the device



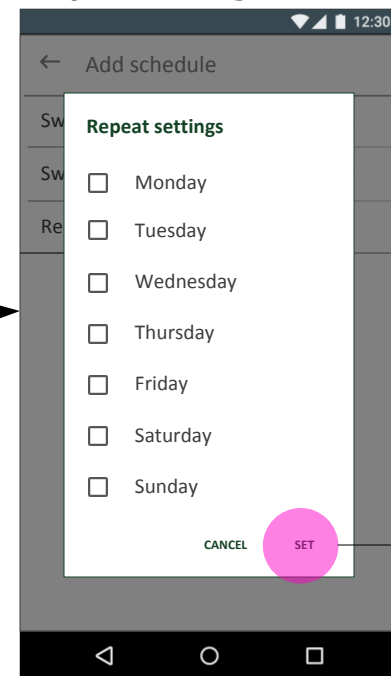
[Fig.3-15] Confirmation dialog



[Fig.3-16] Device list updated

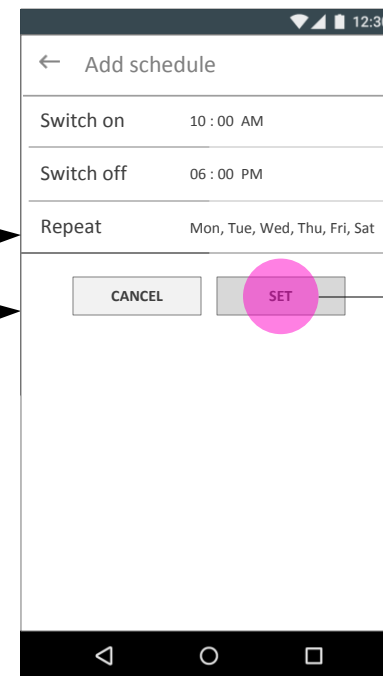


[Fig.3-17] Repeat settings

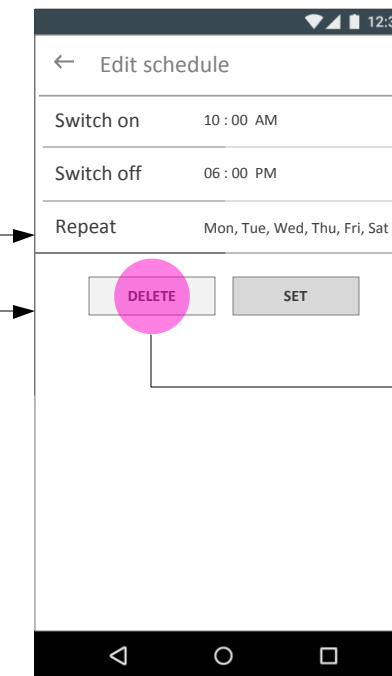


Tick nothing or no tap "repeat" item -> shows "--"; Tick all -> shows "Everyday"; Tick Monday to Friday -> shows "Weekday"; Tick Sat to Sun -> shows "Weekend"; Tick 2~6 items -> shows "Mon, Tue, Wed..."; Tick 1 item only -> shows "Monday"

[Fig.3-18] Add/edit schedule

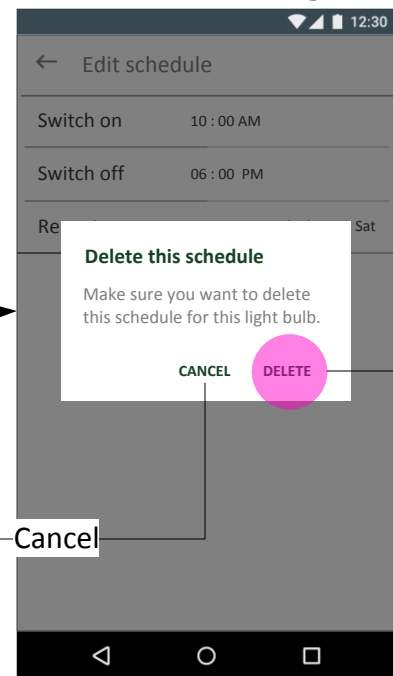


[Fig.3-19] Edit schedule



* A delete button would appear when user is editing an existed schedule.

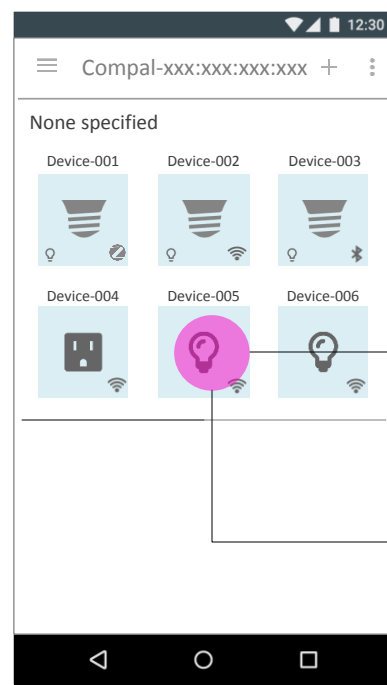
[Fig.3-20] Confirmation dialog



Go to [Fig.3-1] Device detail

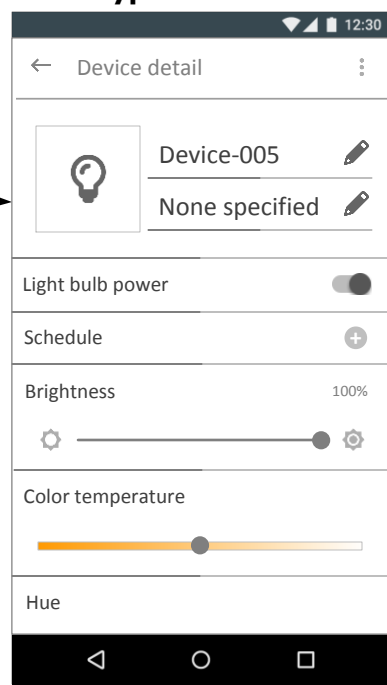
* Brightness status remains off when light bulb is power off, it will back to editable until user switch the light bulb to power on.

[Fig.5-1] Device list



Long press

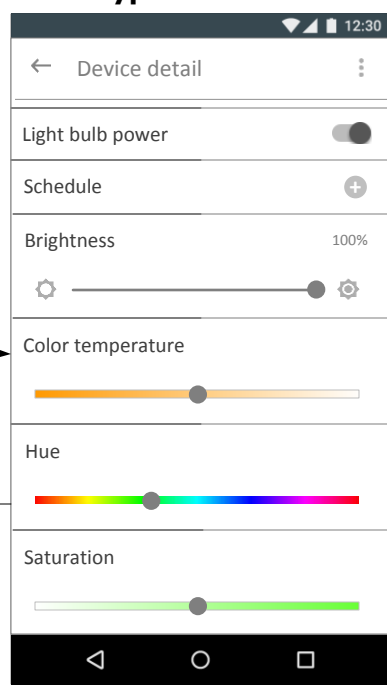
[Fig.5-2] Bulb type 1 device detail



Swipe up

Swipe down

[Fig.5-3] Bulb type 1 device detail

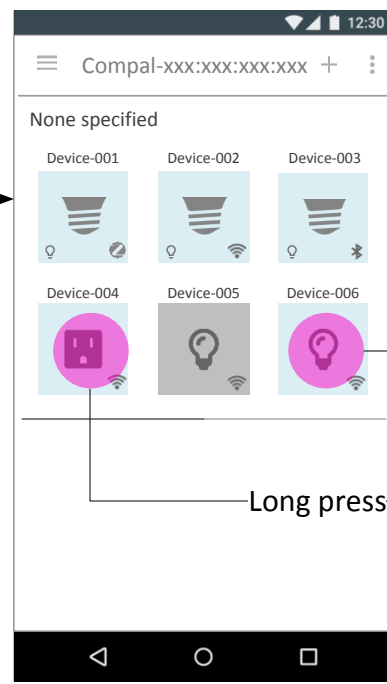


* Long press item to open the device detail; single tap to switch on/off the device.

Single tap

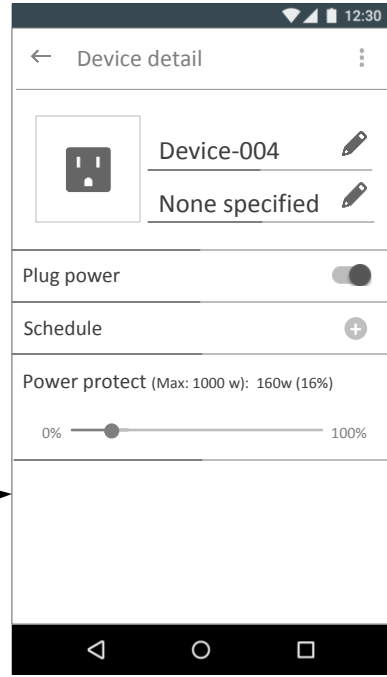
Long press

[Fig.5-4] Device list

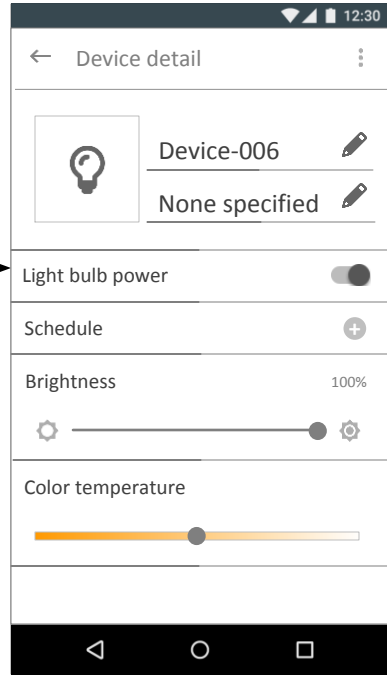


Long press

[Fig.5-5] Smart plug device detail



[Fig.5-6] Bulb type 2 device detail



[Fig.0-10] Device list

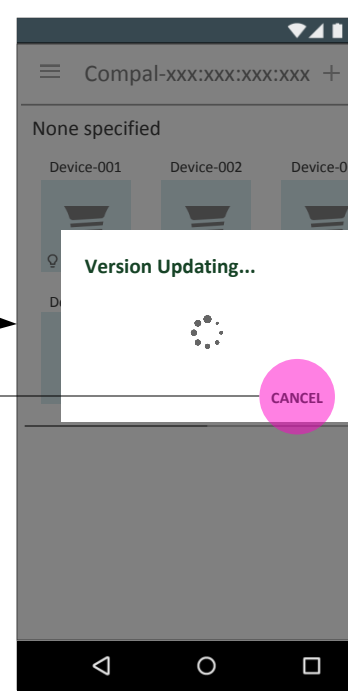
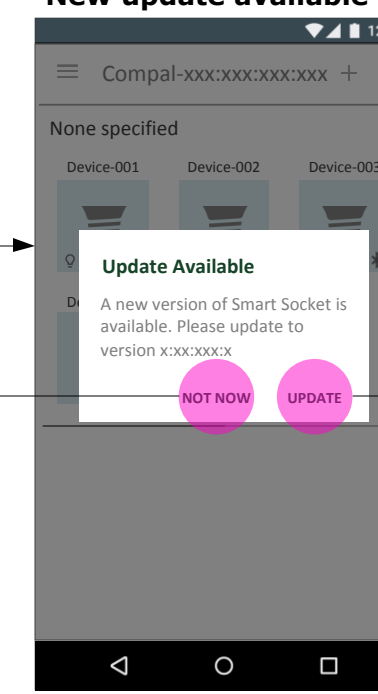
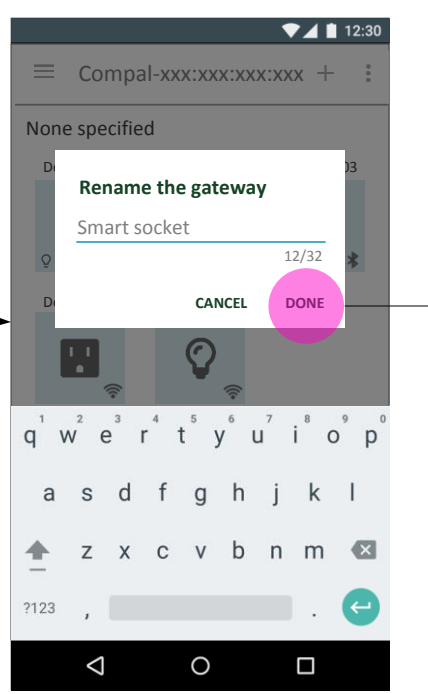
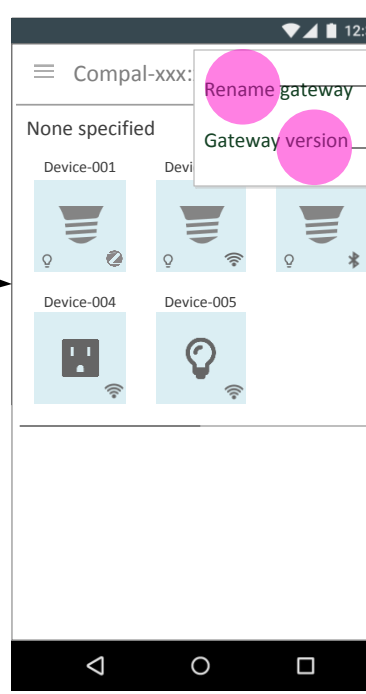
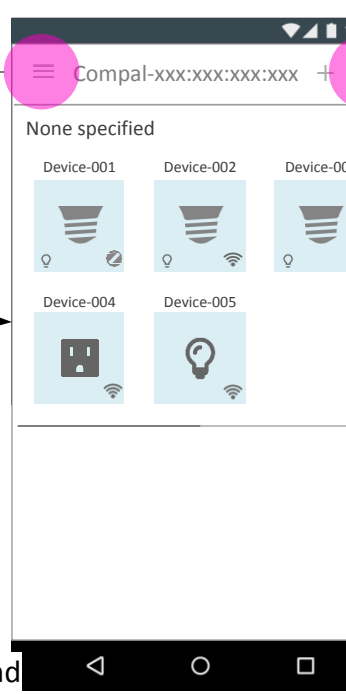
[Fig.4-1] Option menu

[Fig.4-2] Rename gateway

[Fig.4-3] Show gateway version

[Fig.4-4] New update available

[Fig.4-5] Updating



Version got updated?

No

YES

Updated successful?

No

YES

The selected gateway has devices?

NO

YES

* This frame also applied for the scenario that user just go to another place where has existed gateway.

If updated successful

Expand option menu

* User can pull this page down to refresh items .

Rename gateway "DONE"

Check gateway version "OK"

* Processing for 30 seconds maximum.

Back to device list

Turn off all devices

Switch gateway

Go to A. Gateway setup [Fig.1-1] Start to setup gateway

Initial new socket

Help & Tips

Reset

Go to [Fig.4-5] New update available

Go to A. Gateway setup [Fig.1-13] Product official website

Go to A. Gateway setup [Fig.1-1] Start to setup gateway

Go to [Fig.0-10] Device list

[Fig.4-6] Navi-drawer

[Fig.4-7] Turn off all devices

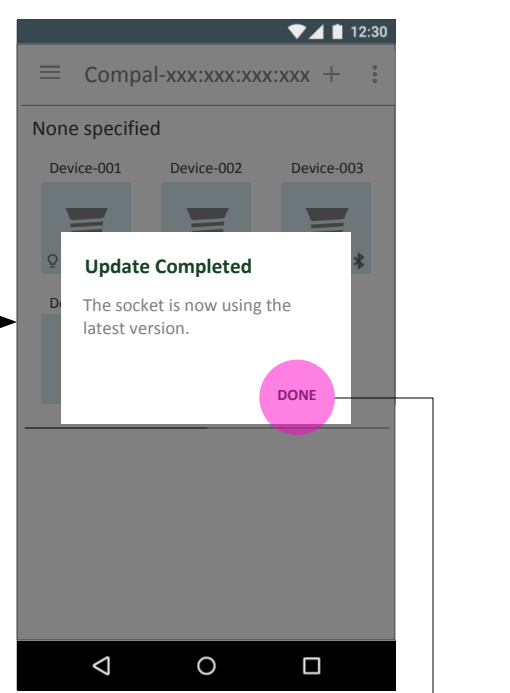
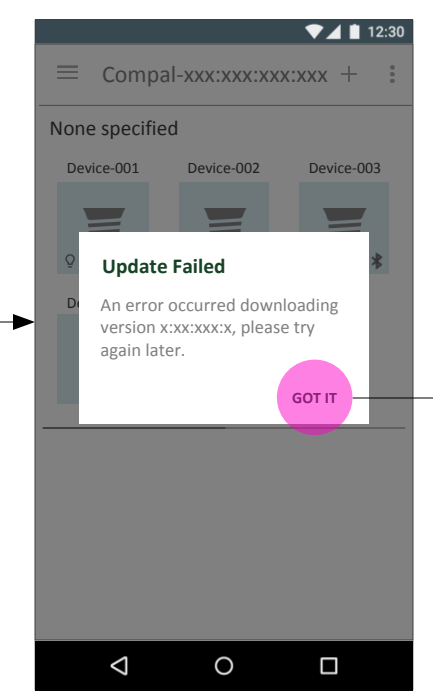
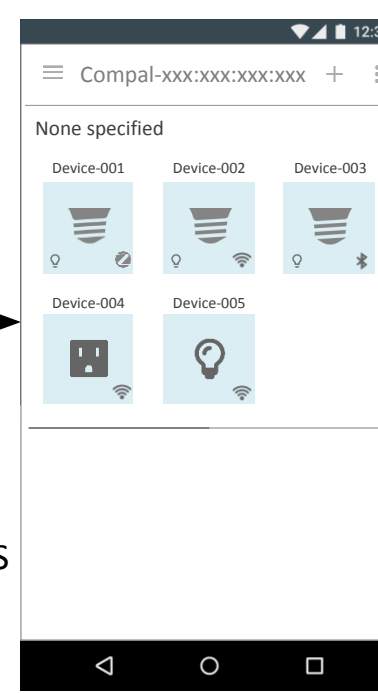
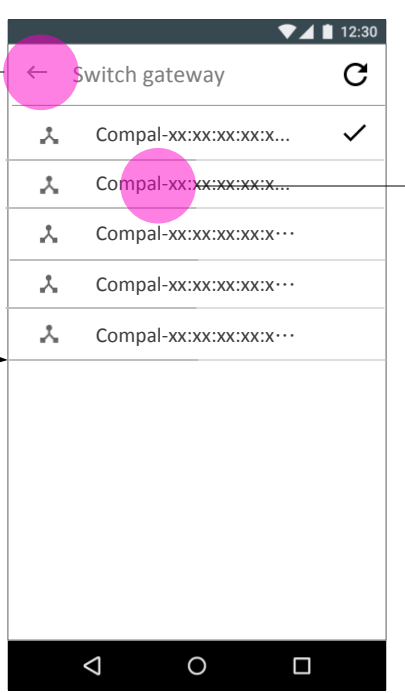
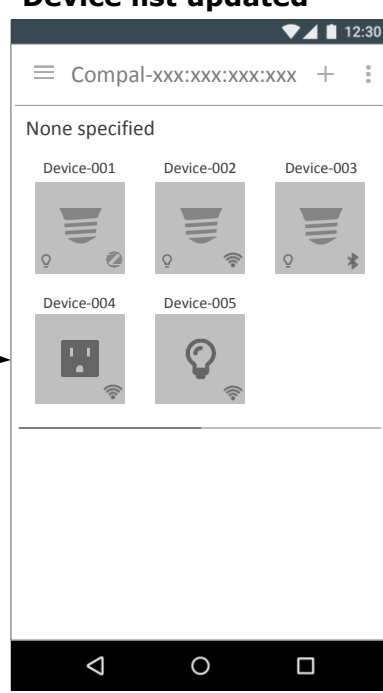
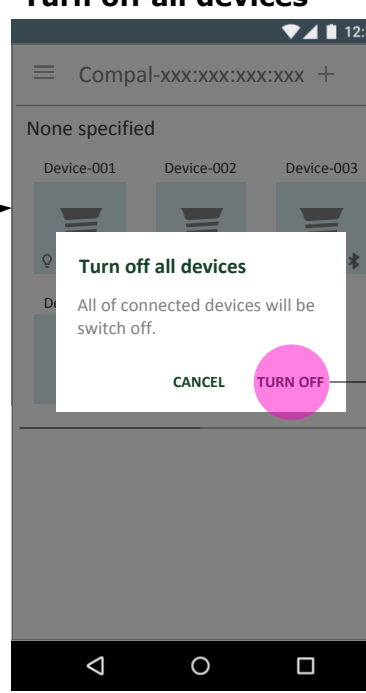
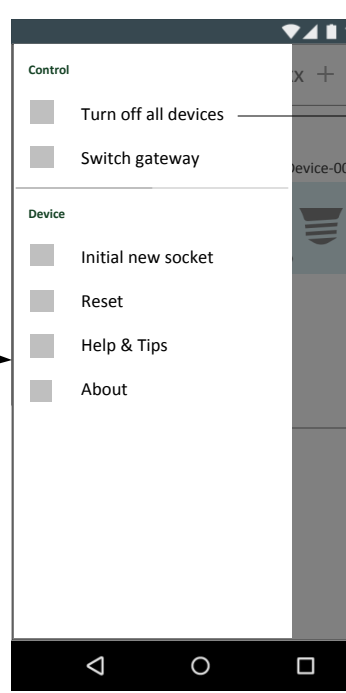
[Fig.4-8] Device list updated

[Fig.4-9] Switch gateway

[Fig.4-10] Device list

[Fig.4-11] Updated failed

[Fig.4-12] Updated successful



[Fig.4-13] About

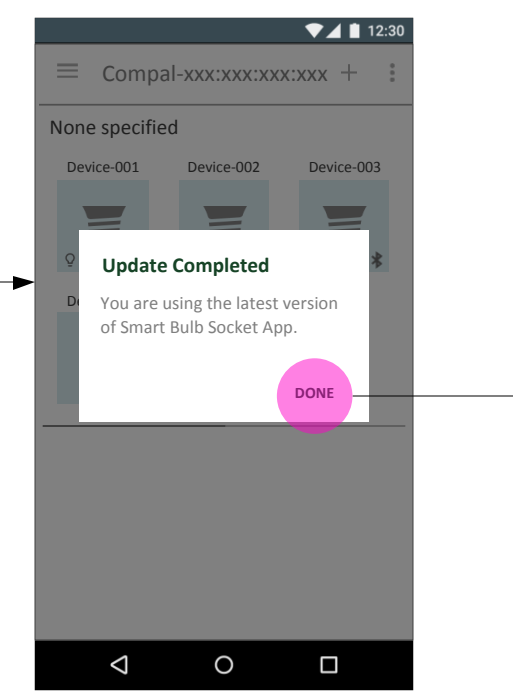
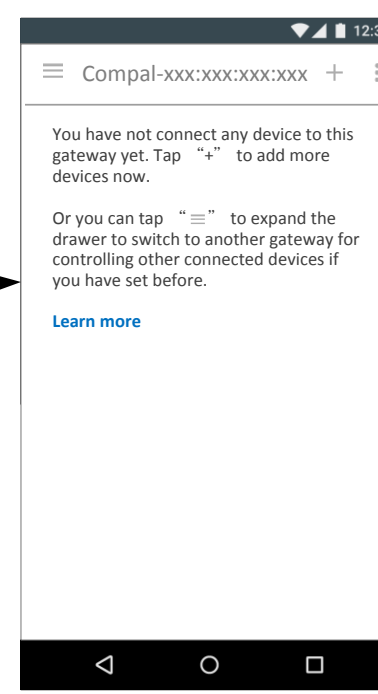
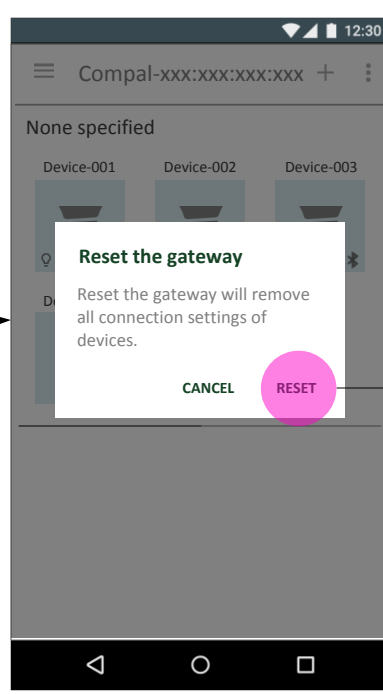
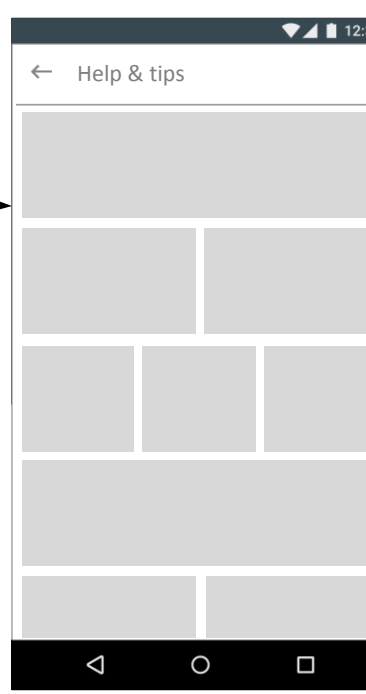
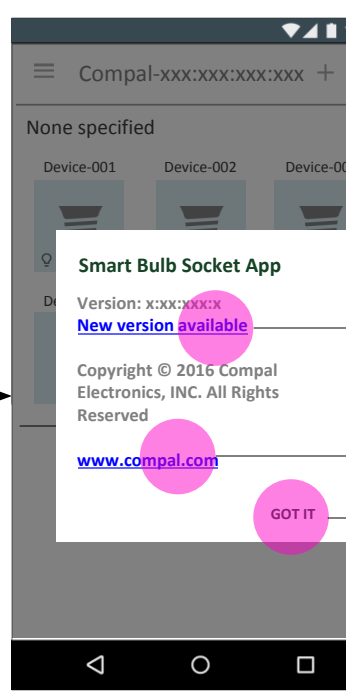
[Fig.4-14] Help & Tips

[Fig.4-15] Reset

[Fig.4-16] Detected other gateway

[Fig.4-17] Empty state

[Fig.4-18] Updated successful



Edison L1

FCC

Federal Communications Commission (FCC) Statement

15.21

You are cautioned that changes or modifications not expressly approved by the part responsible for compliance could void the user's authority to operate the equipment.

15.105(b)

This equipment has been tested and found to comply with the limits for a Class B digital device, pursuant to part 15 of the FCC rules. These limits are designed to provide reasonable protection against harmful interference in a residential installation. This equipment generates, uses and can radiate radio frequency energy and, if not installed and used in accordance with the instructions, may cause harmful interference to radio communications. However, there is no guarantee that interference will not occur in a particular installation. If this equipment does cause harmful interference to radio or television reception, which can be determined by turning the equipment off and on, the user is encouraged to try to correct the interference by one or more of the following measures:

- Reorient or relocate the receiving antenna.
- Increase the separation between the equipment and receiver.
- Connect the equipment into an outlet on a circuit different from that to which the receiver is connected.
- Consult the dealer or an experienced radio/TV technician for help.

This device complies with Part 15 of the FCC Rules. Operation is subject to the following two conditions:

- 1) this device may not cause harmful interference and
- 2) this device must accept any interference received, including interference that may cause undesired operation of the device.

FCC RF Radiation Exposure Statement:

1. This Transmitter must not be co-located or operating in conjunction with any other antenna or transmitter.
2. This equipment complies with RF radiation exposure limits set forth for an uncontrolled environment.
3. This device should be installed and operated with minimum distance 20 mm between the radiator & your body.

ISED

Innovation, Science and Economic Development Canada (ISED)

Innovation, science et développement économique Canada (ISED)

CAN ICES-3(B)/NMB-3(B)

Canadian Notice

This device complies with ISED license-exempt RSS standard(s). Operation is subject to

The following two conditions:

- (1) this device may not cause interference, and
- (2) this device must accept any interference, including interference that may cause undesired operation of the device.

Avis Canadien

Le présent appareil est conforme aux CNR d'ISED applicables aux appareils radio exempts de licence. L'exploitation est autorisée aux deux conditions suivantes :

- (1) l'appareil ne doit pas produire de brouillage, et
- (2) l'utilisateur de l'appareil doit accepter tout brouillage radioélectrique subi, même si le brouillage est susceptible d'en compromettre le fonctionnement.

Caution: Exposure to Radio Frequency Radiation.

1. To comply with the Canadian RF exposure compliance requirements, this device and its antenna must not be co-located or operating in conjunction with any other antenna or transmitter.
2. To comply with RSS 102 RF exposure compliance requirements, a separation distance of at least 20 cm must be maintained between the antenna of this device and all persons.

Attention: exposition au rayonnement radiofréquence.

1. Pour se conformer aux exigences de conformité RF canadienne l'exposition, cet appareil et son antenne ne doivent pas être co-localisés ou fonctionnant en conjonction avec une autre antenne ou transmetteur.
2. Pour se conformer aux exigences de conformité CNR 102 RF exposition, une distance de séparation d'au moins 20 cm doit être maintenue entre l'antenne de cet appareil et toutes les personnes

RF Radiation Exposure Statement:

For body worn operation, this phone has been tested and meets RF exposure guidelines when used with an accessory that contains no metal. Use of other accessories may not ensure compliance with RF exposure guidelines.

Déclaration de l'exposition aux radiations RF:

Pour le fonctionnement du corps, ce téléphone a été testé et répond aux directives d'exposition RF lorsqu'il est utilisé avec un accessoire qui ne contient pas de métal. Utilisation d'autres accessoires peut ne pas assurer le respect des directives d'exposition RF.