



FCC / ISED Test Setup Photos

For:

Xirgo Technologies, LLC

Model Name:

XT1520

Product Description:

Proximity Bluetooth beacons with a single chip Bluetooth 5 + ARM mounted to distribution carts, which are used in conjunction with XT49xx devices installed on trailers.

FCC ID: GKM-XT1520

IC ID: 10281A-XT1520

Addition to Report #: EMC_XIRGO-132-20001_15.247_BTLE_DTS_REV1

DATE: 2020-07-07

CETECOM Inc.

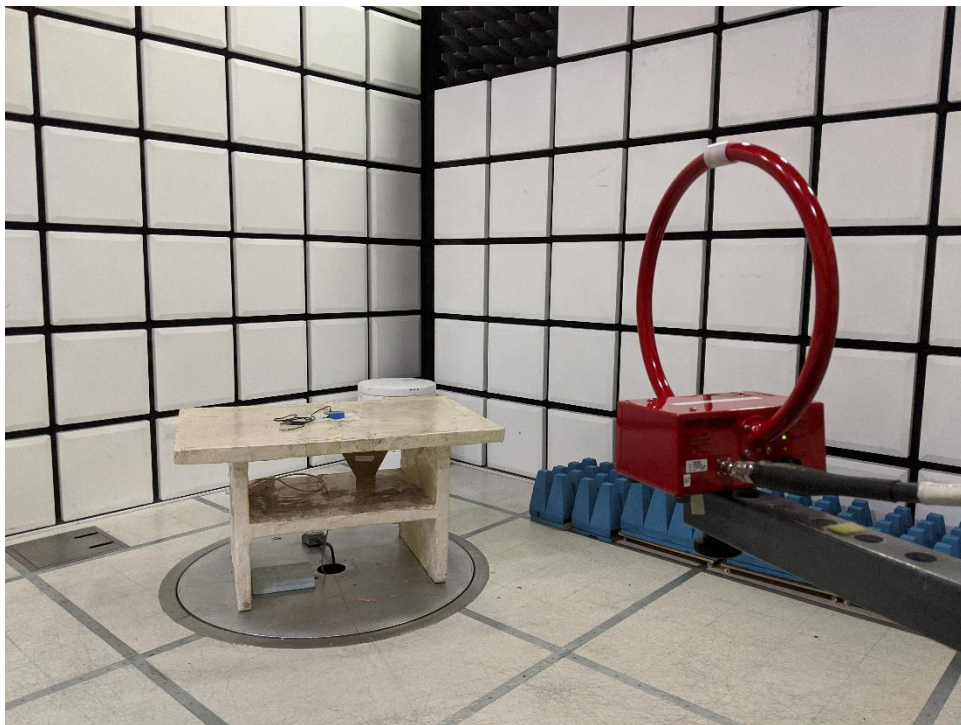
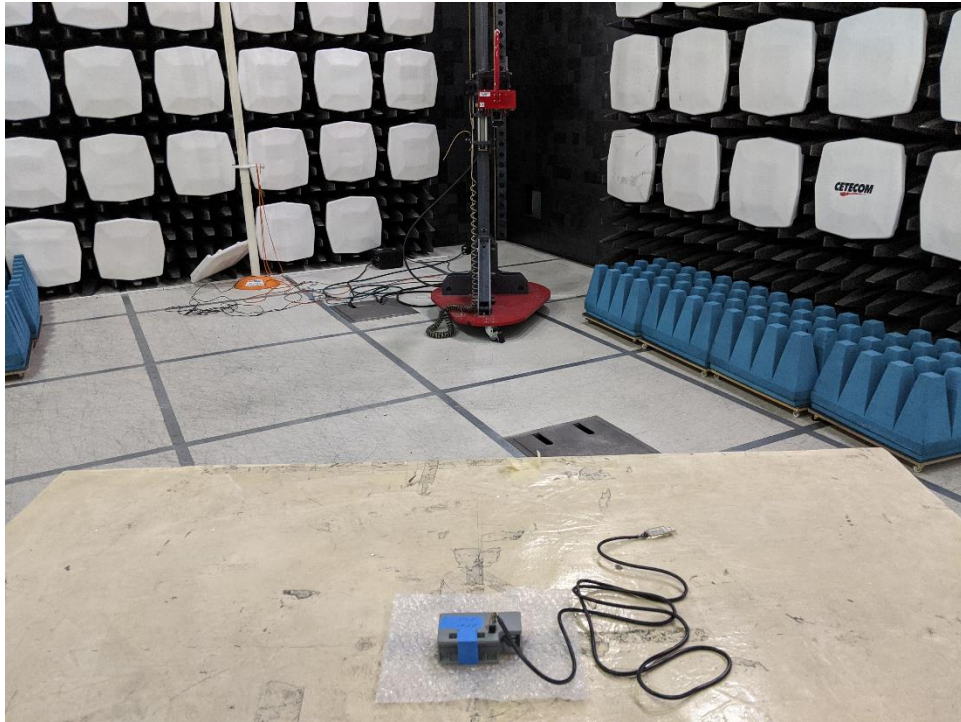
411 Dixon Landing Road ♦ Milpitas, CA 95035 ♦ U.S.A.

Phone: + 1 (408) 586 6200 ♦ Fax: + 1 (408) 586 6299 ♦ E-mail: info@cetecom.com ♦ <http://www.cetecom.com>

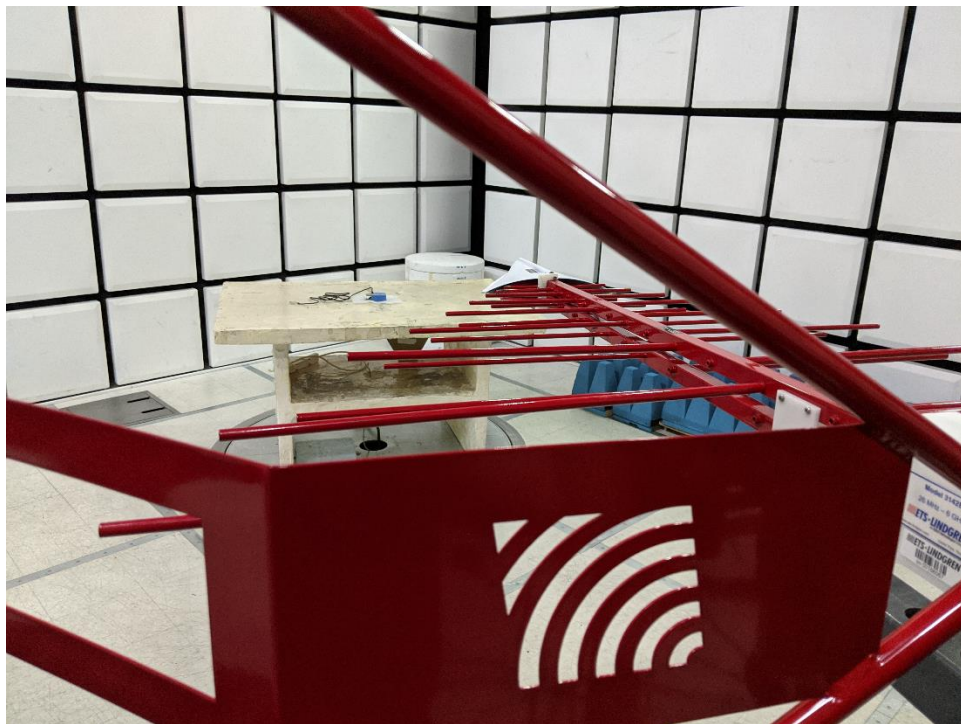
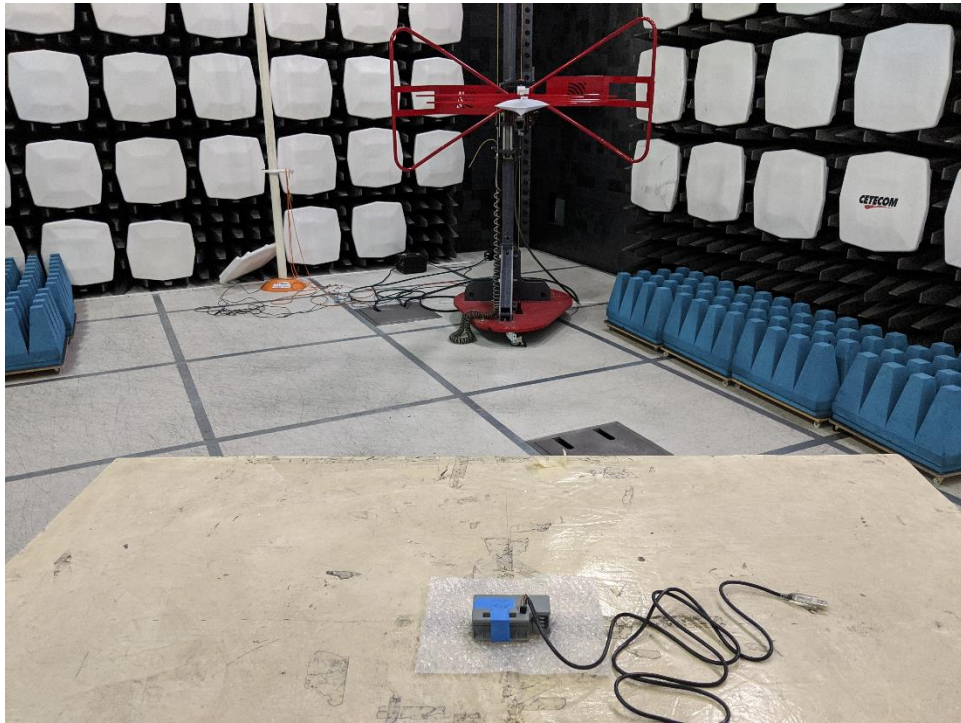
CETECOM Inc. is a Delaware Corporation with Corporation number: 2905571

Radiated Measurements

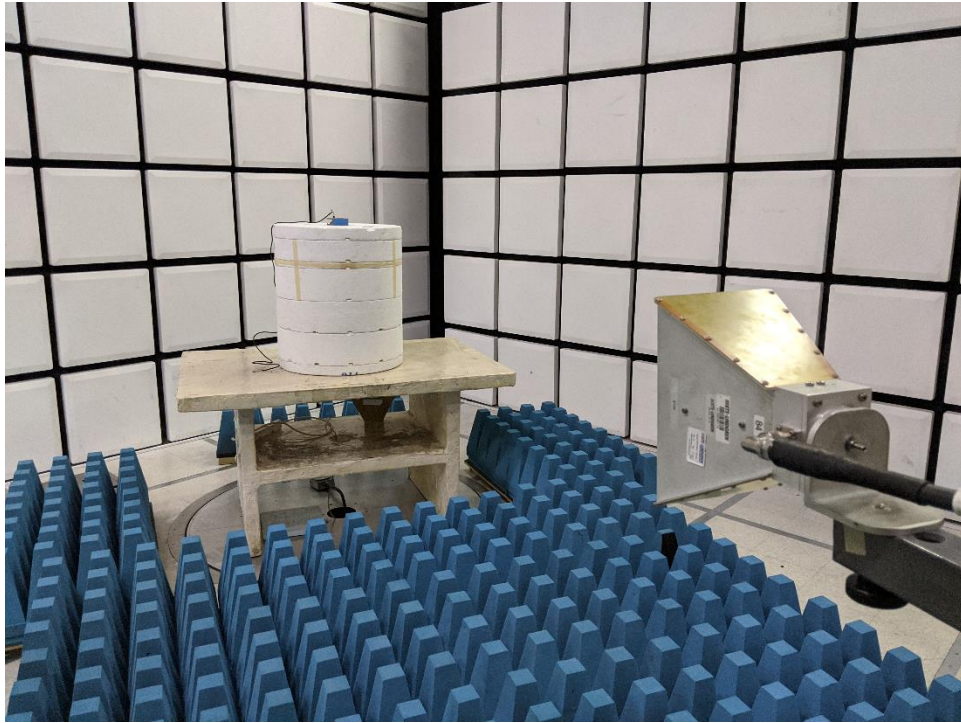
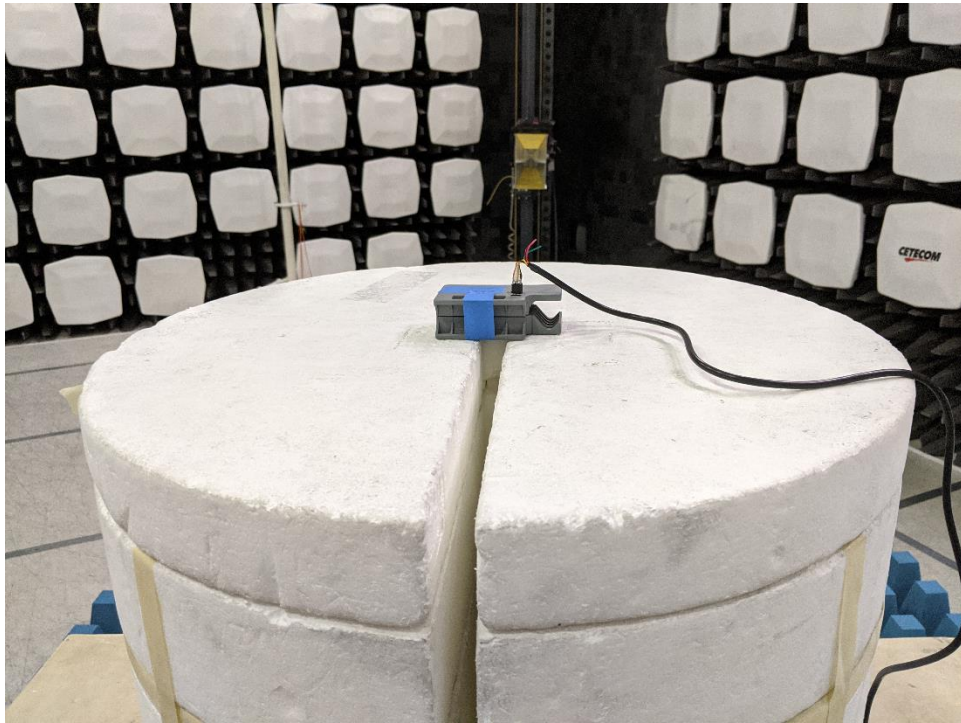
9 KHz to 30 MHz



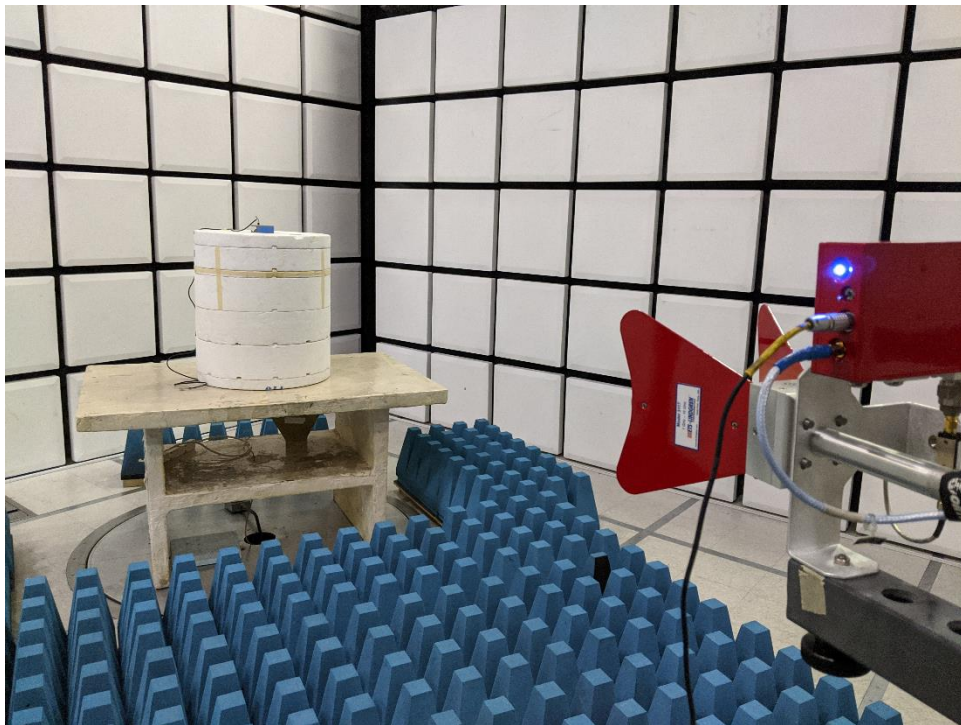
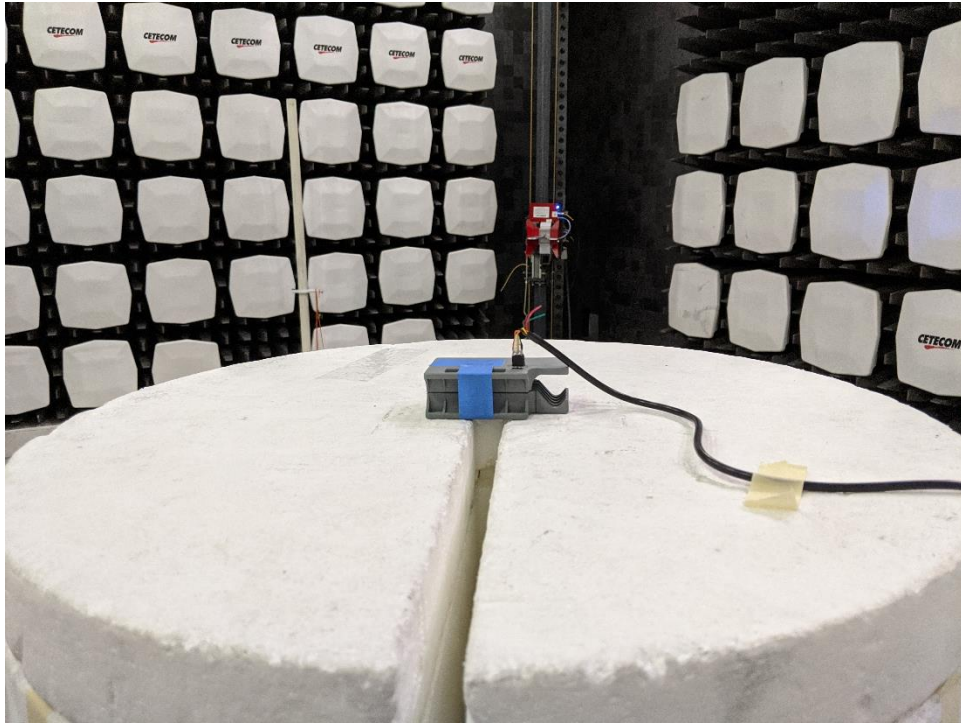
30 MHz to 1 GHz



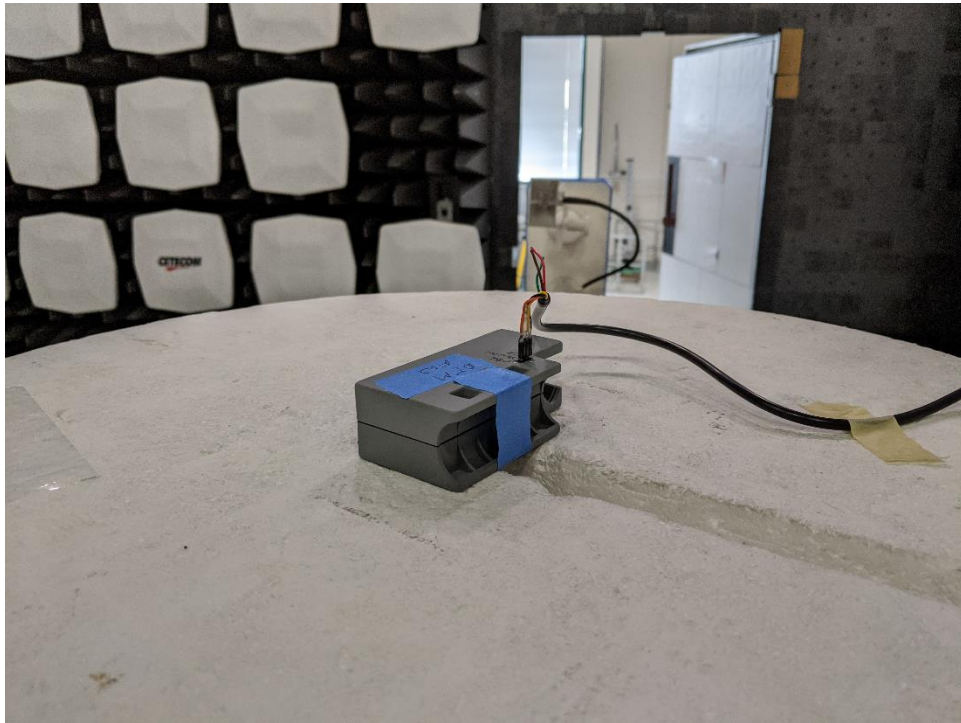
1 GHz to 3 GHz



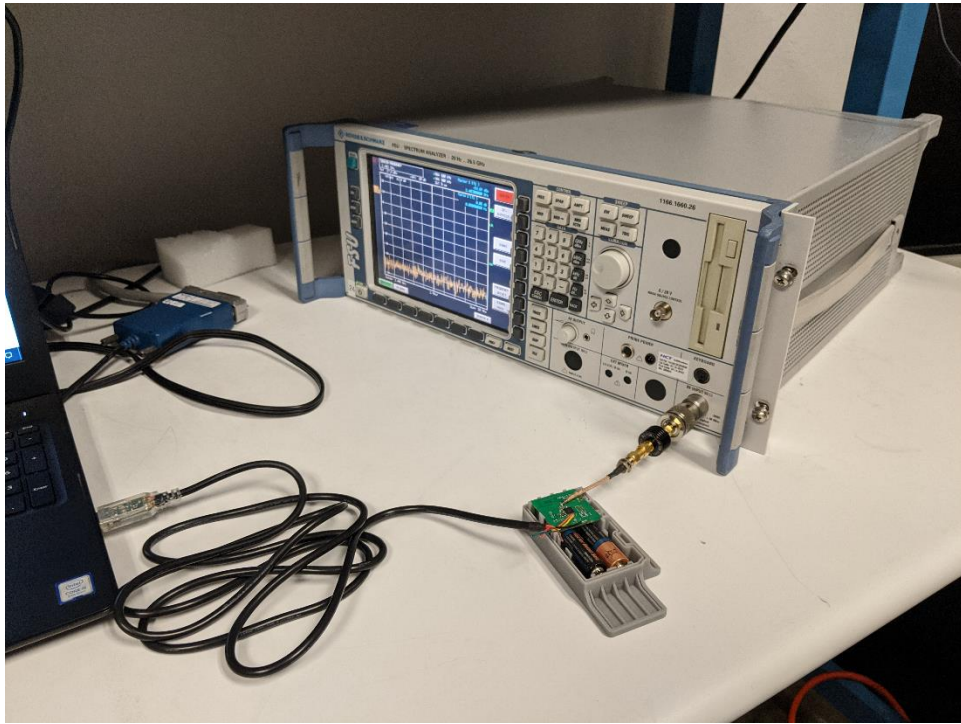
3 GHz to 18 GHz



18 GHz to 26 GHz



Conducted Measurements

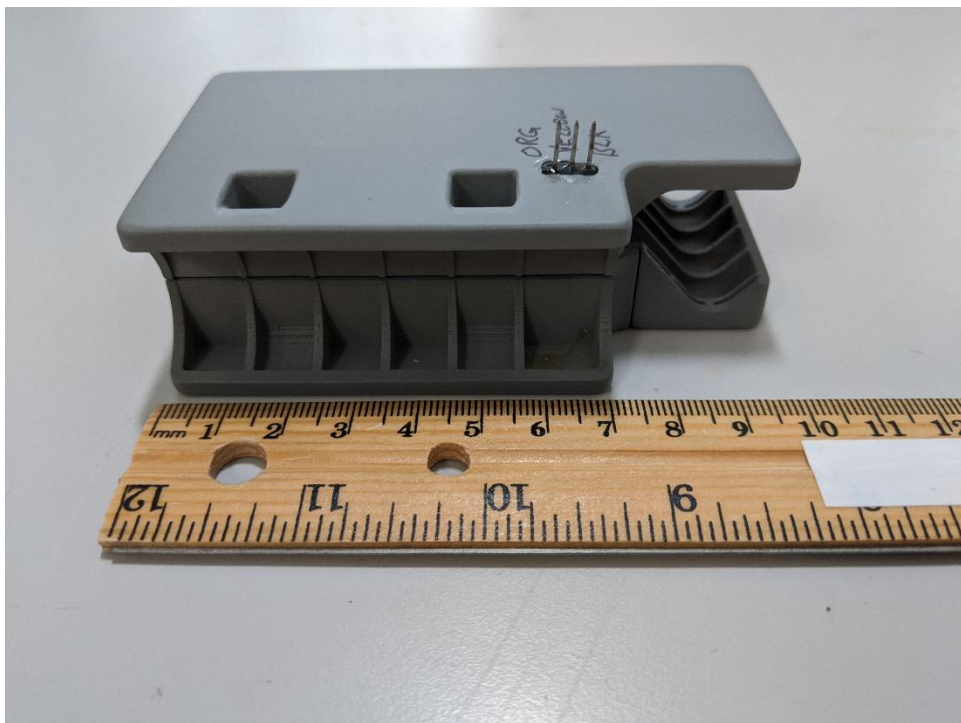


EUT Photos

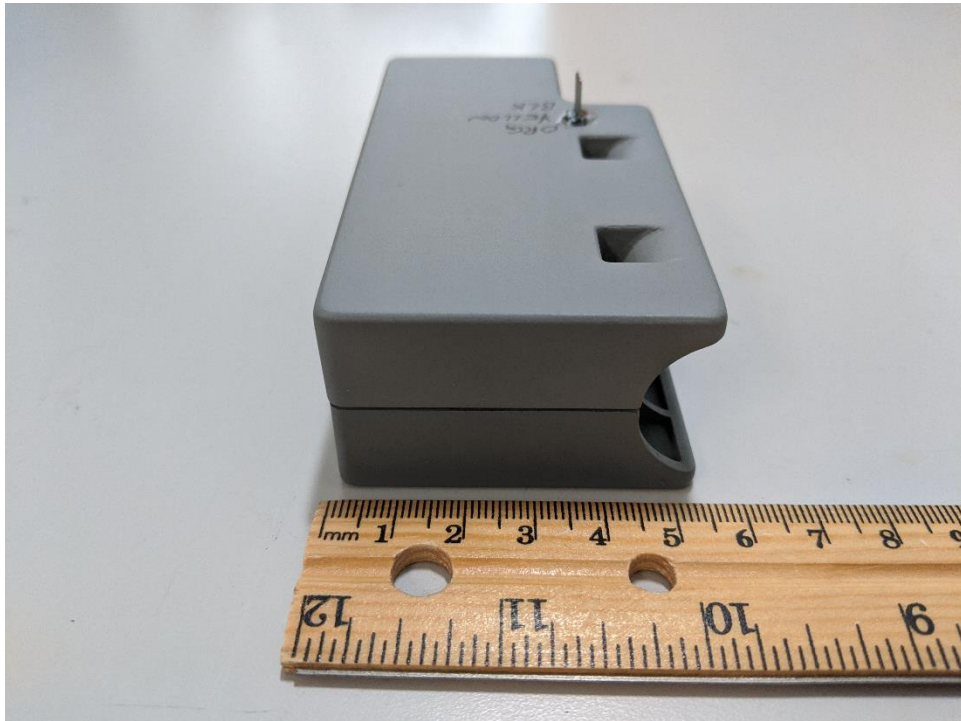
EUT Top View



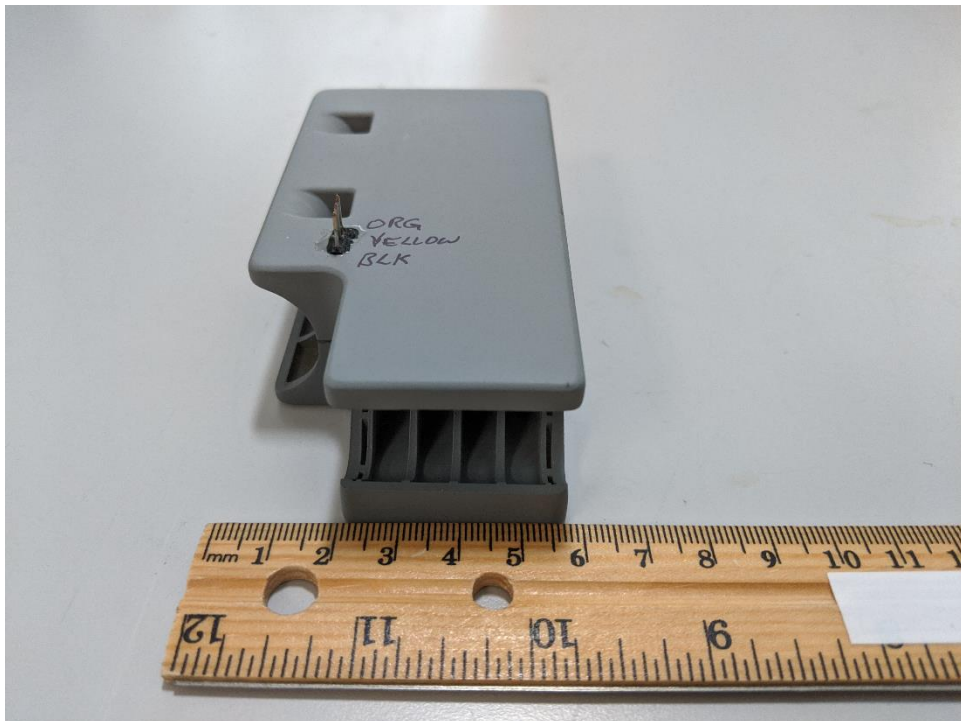
EUT Front View



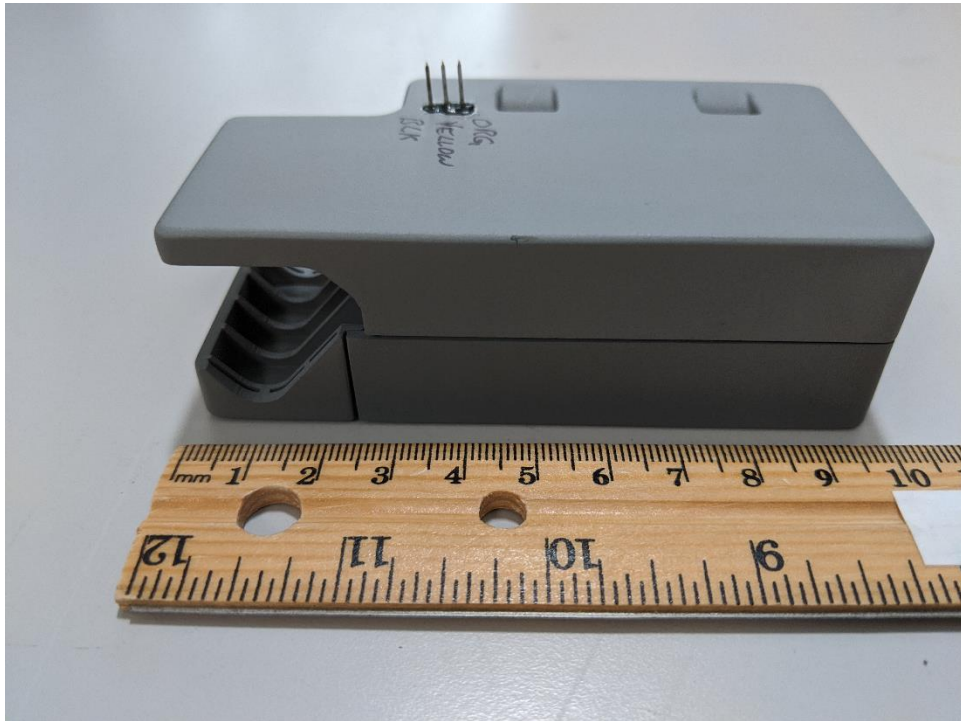
EUT Left View



EUT Right View



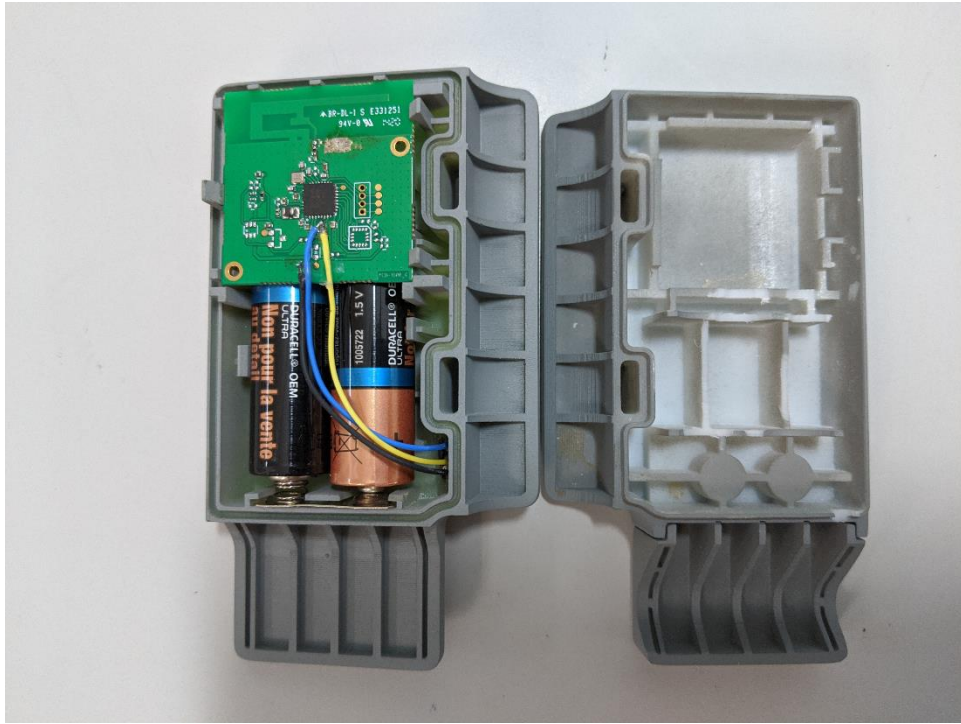
EUT Back View



EUT Bottom View



EUT Internal View



Date	Report Name	Changes to report	Report prepared by
2020-06-30	EMC_XIRGO-132-20001_15.247_BTLE_DTS_Setup_Photos	Initial Version	Chin Ming Lui
2020-07-07	EMC_XIRGO-132-20001_15.247_BTLE_DTS_Setup_Photos_REV1	Modified FCC ID & IC ID	Chin Ming Lui

<<< The End >>>