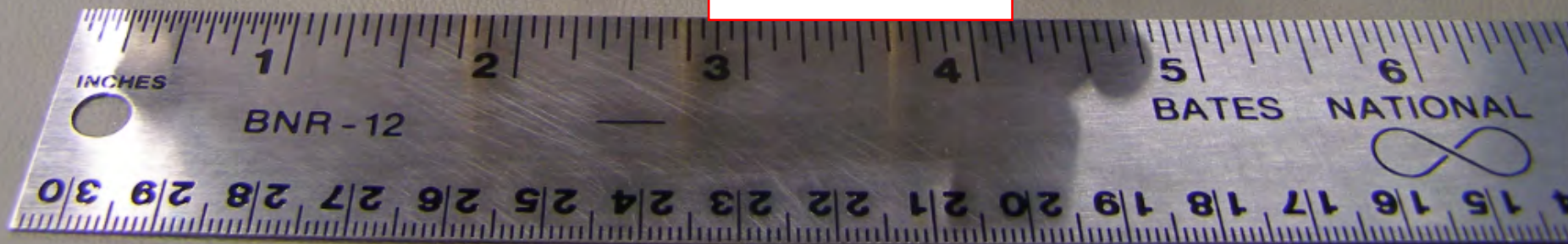


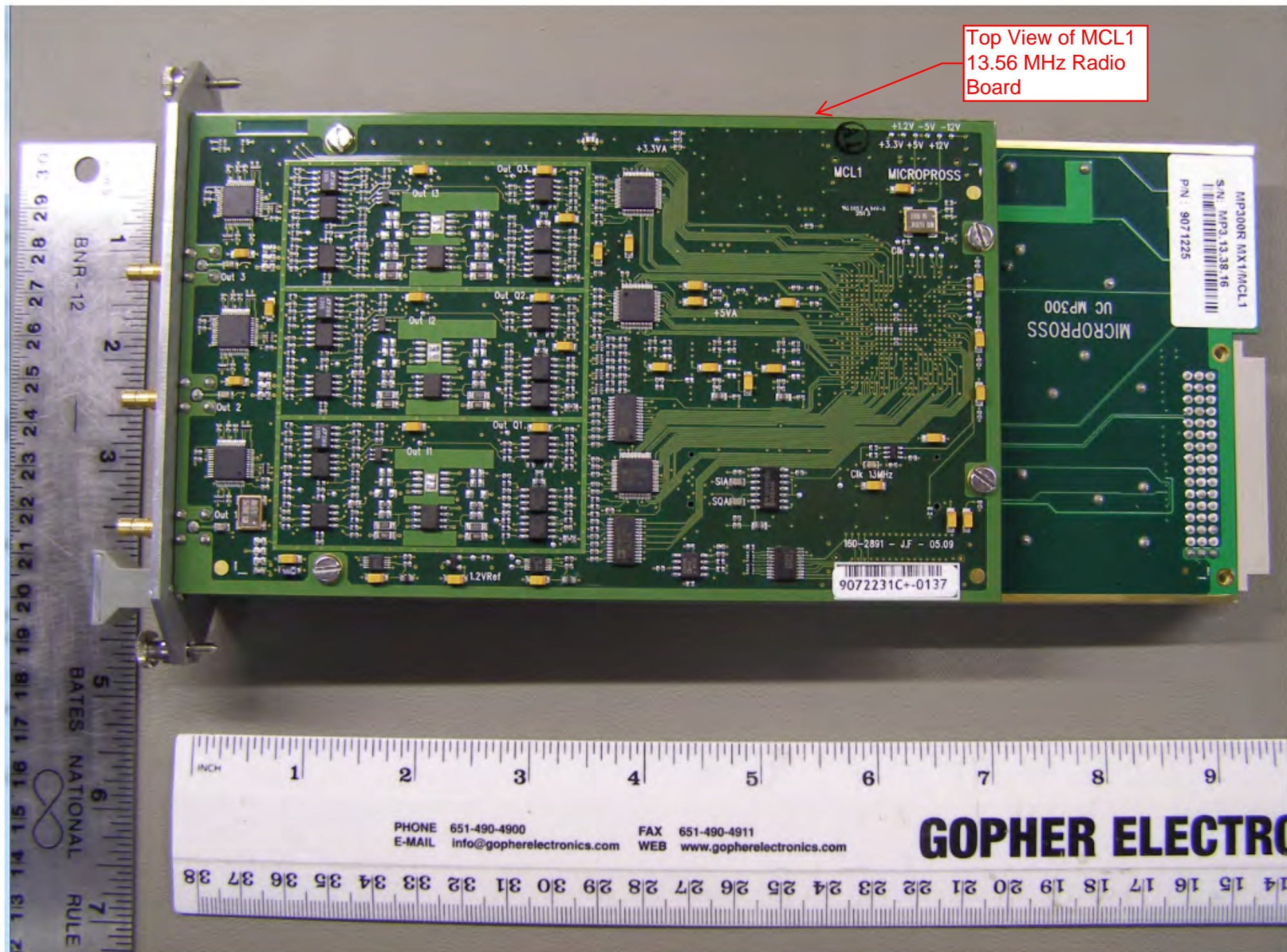
Top of MCL1 13.56
MHz Radio Board in
Coupler Assembly



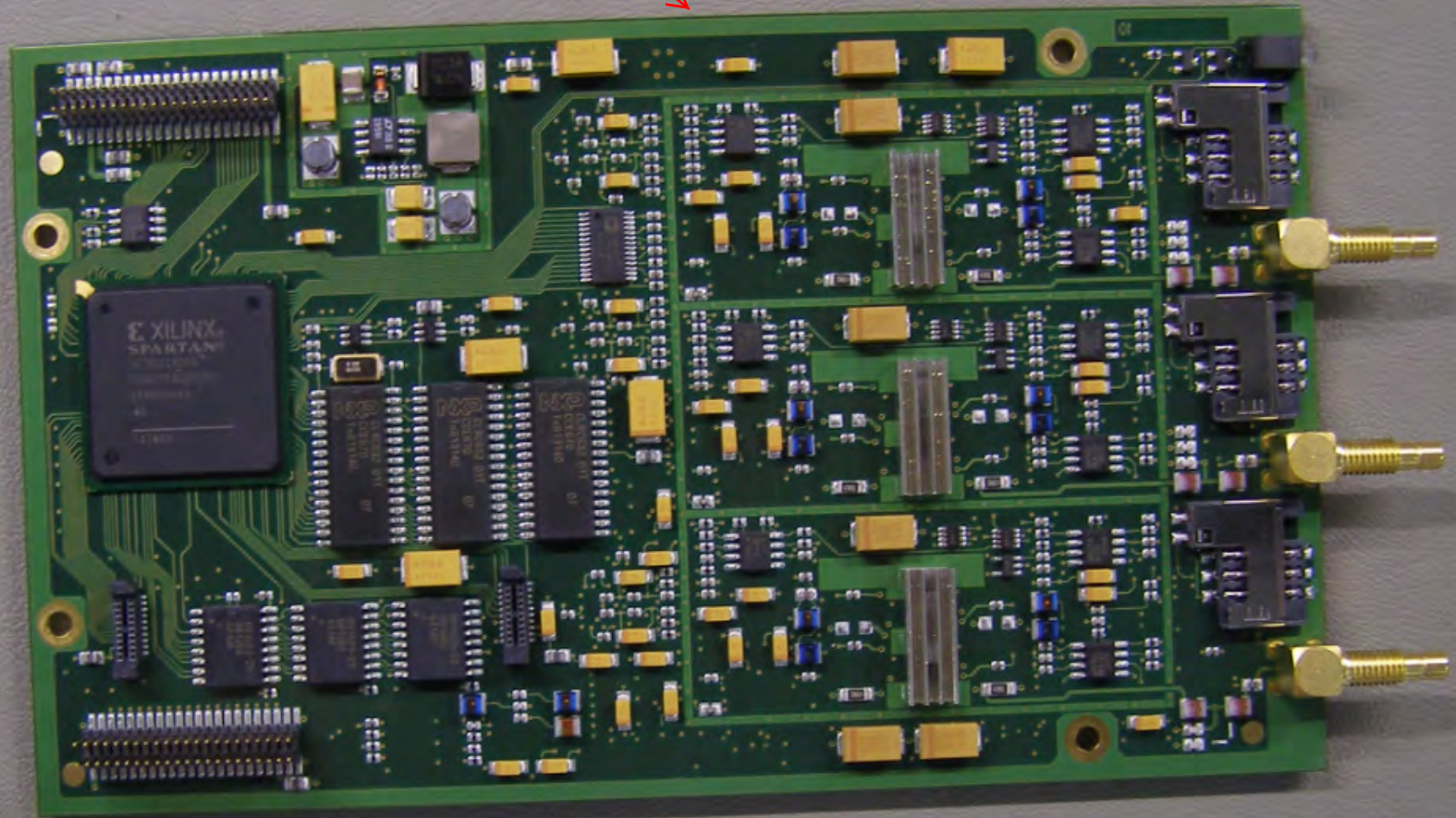
Three SMA Antenna
Connectors



Top View of MCL1
13.56 MHz Radio
Board



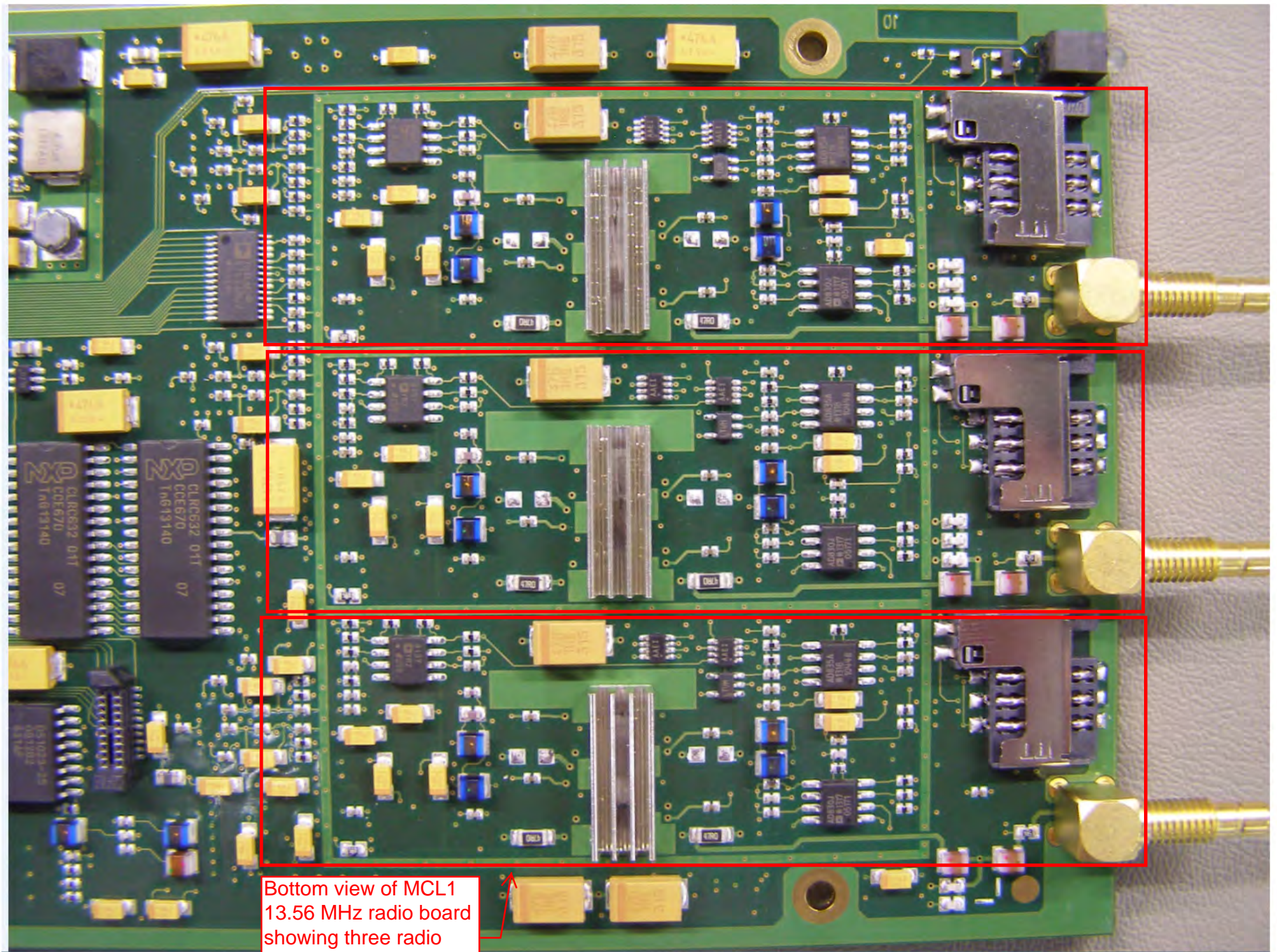
Bottom View of
MCL1 13.56 MHz
Radio Board



PHONE 651-490-4900
E-MAIL info@gopherelectronics.com

FAX 651-490-4911
WEB www.gopherelectronics.com

GOPH



Bottom view of MCL1
13.56 MHz radio board
showing three radio
sections