

Photo 1: Keyboard open with Matrix and PCB's (top side)

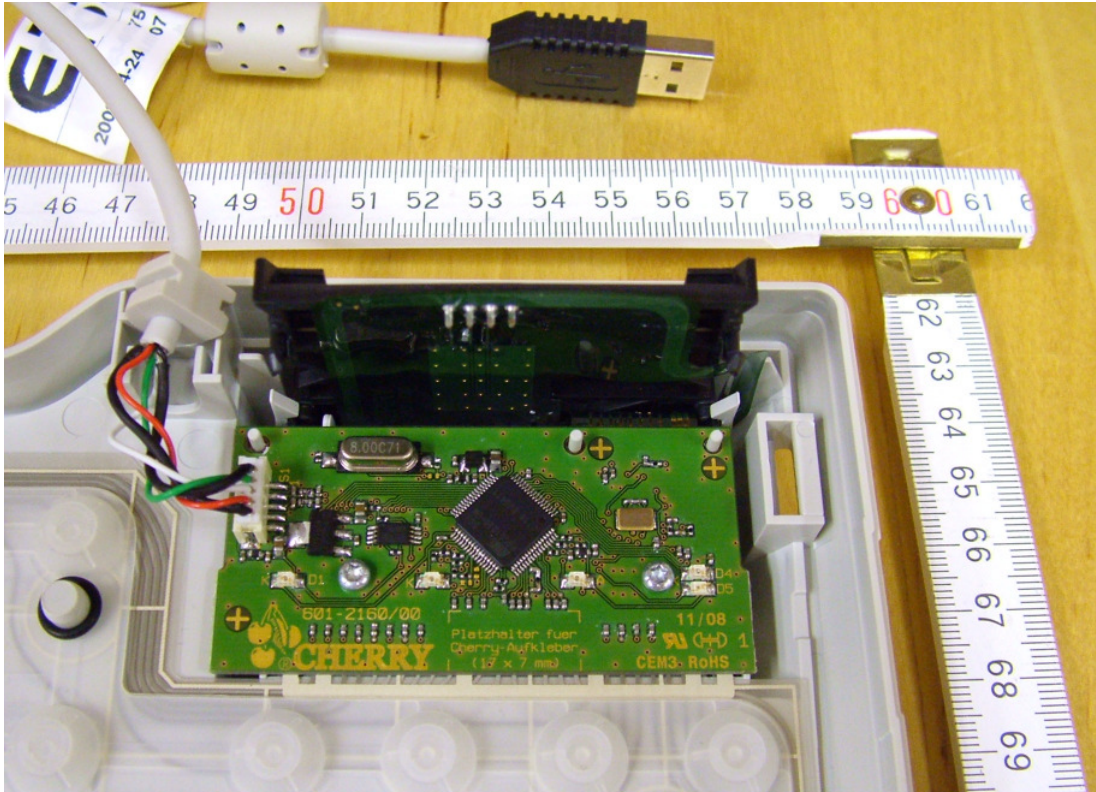


Photo 2: Zoom to corner / Keyboard open with Matrix and PCB's (front side)

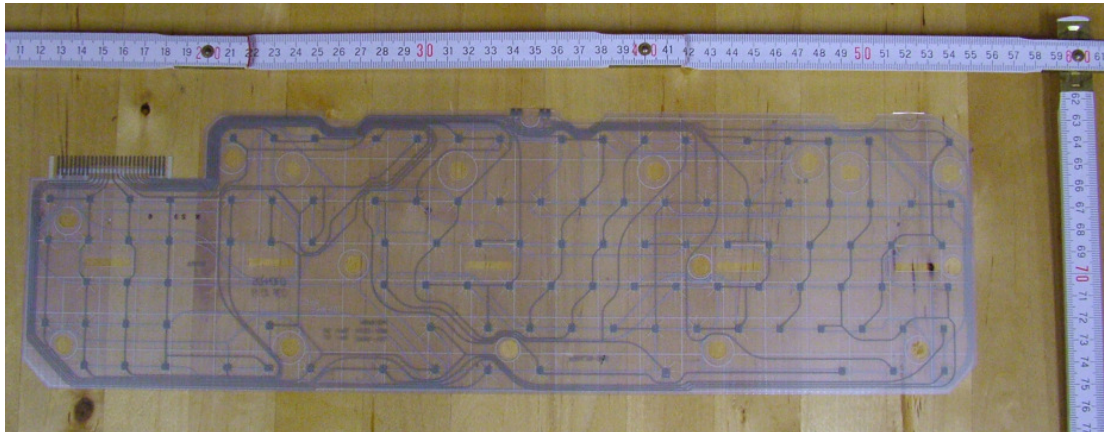


Photo 3: Matrix (top side)

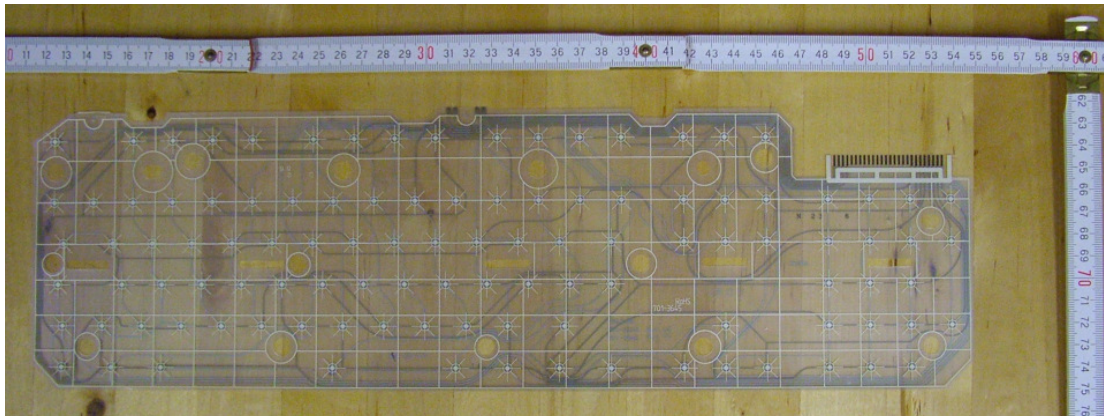


Photo 4: Matrix (bottom side)



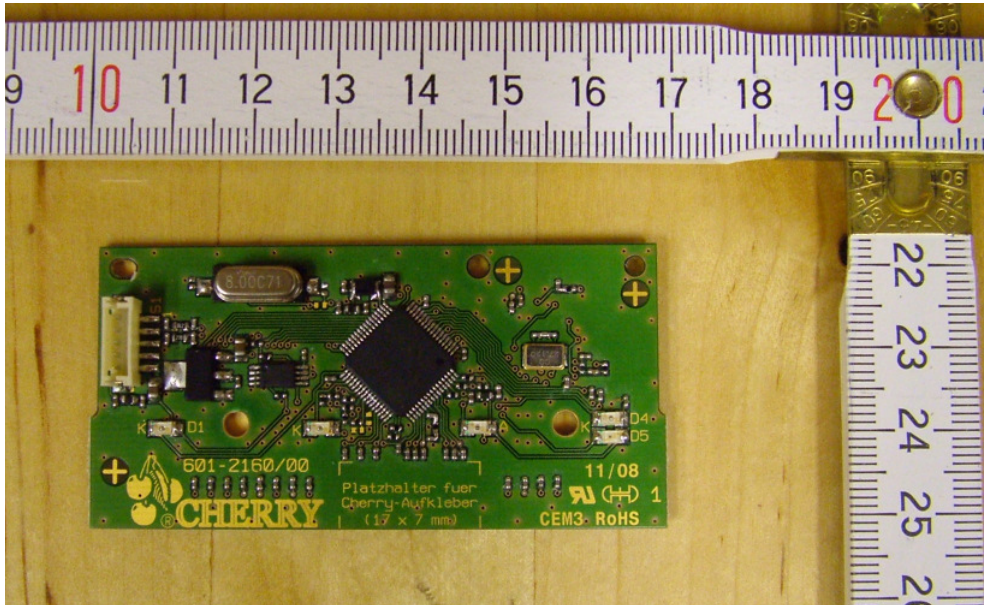


Photo 5: Keyboard PCB (top side)

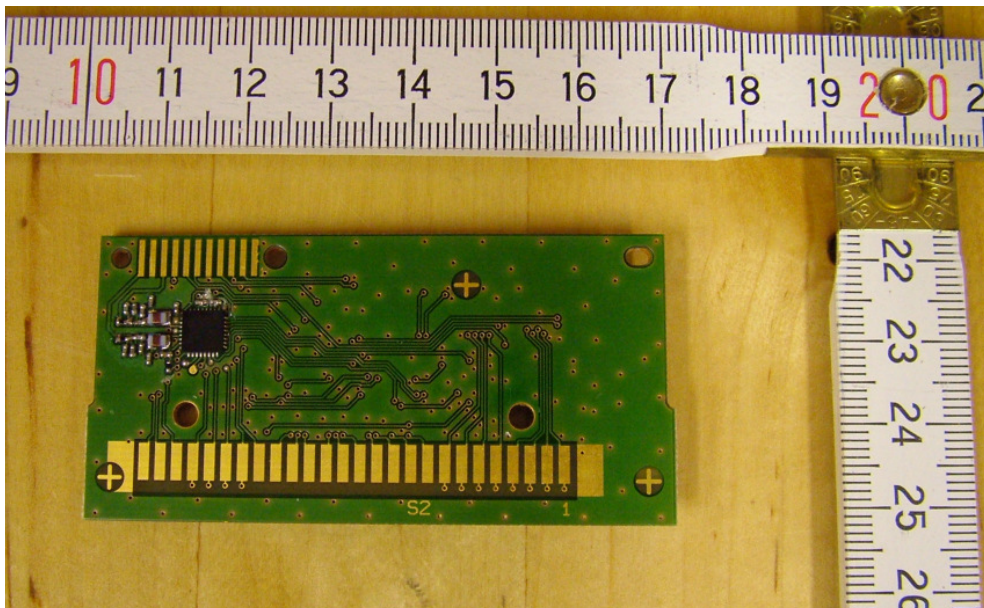


Photo 6: Keyboard PCB (bottom side)

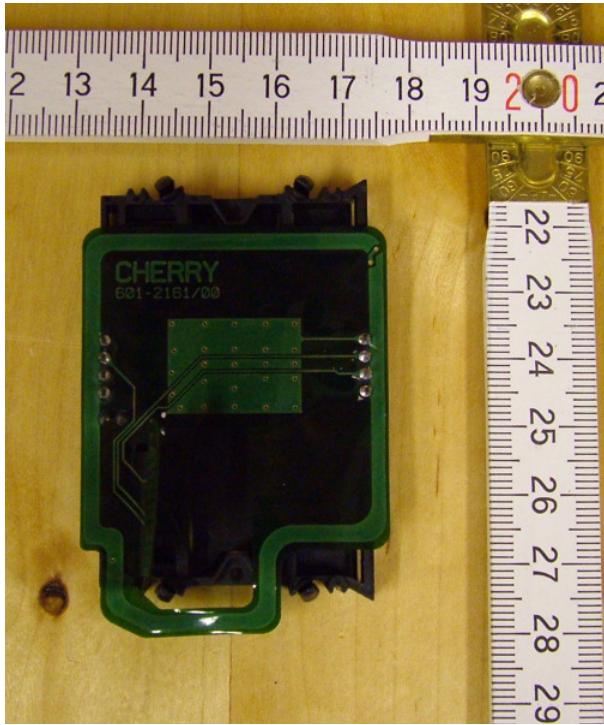


Photo 7: RFID/ChipCard PCB (top side)

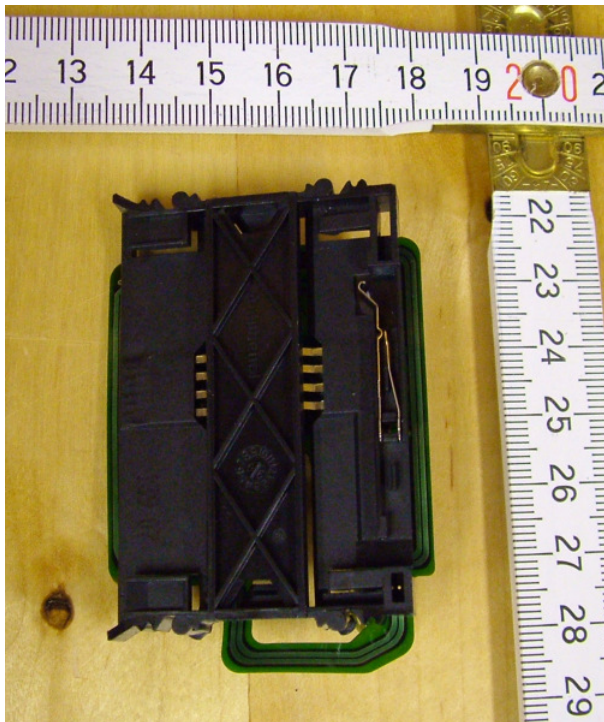


Photo 8: RFID/ChipCard PCB (bottom side)