

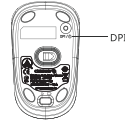
折叠方式: 风琴拉页

折叠成品尺寸 120*120MM

正面

On/Off switch

On the bottom of the mouse, there is a On/Off switch. When you are traveling or on a plane or stop using it for a long time, please switch it to Off to save power. Press the DPI button for 3s, the LED gets dark gradually till off. Reuse it, you need to press the DPI buttons 3s again, the LED will flash according to the rest power, if rest power over 1.5V, the LED will flash 5 times, if less than 1.0V, the LED will only flash one time. After that, you can reuse the mouse.



▲ Battery Disposal

Don't throw away the batteries into the fire. After replace the batteries, put them to the right place for recycling.

Technical data

Frequency band: 2402MHz ~ 2479MHz

Power supply: 1.5V

Operation current: ≤7mA(1.5V)

Resolution: DPI 1000/1500/2000 switchable

Operation distance: up to 10m

The above technical data is for reference only, Cherry could update it without prior notification.

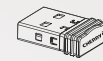


JF-T02 Wireless Sym.Nano Mouse User Guide



Package Contents:

- Wireless RF mouse
- USB nano receiver
- 1xAA battery
- User guide

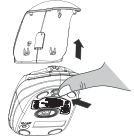


Thanks for buying Cherry products, please read this user guide carefully before use.

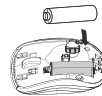
背面

Installation

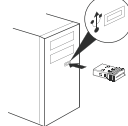
1 Press the button on the bottom of mouse, and open the top cover.



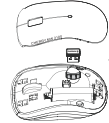
2 Insert one AA battery as the diagram on the battery tray indicates. Close the battery cover.



3 Plug the USB receiver into an available USB port on your computer. Press any key to start.



4 The nano receiver can be stowed away in a hidden compartment inside the mouse.



Set Wireless Connection

The JF-T02 mouse and USB receiver is pre-paired before packing. Users can use it after installing the battery.

1. Turn on the computer.
2. Plug the USB receiver into an available USB port on your computer.
3. Install the battery into the mouse. Press any key to start.

Finished setting the wireless connection of the mouse, you can enjoy the wireless freedom.

Mouse Feature

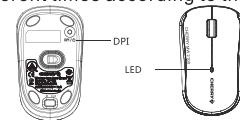
Energy-saving mode

The mouse is with energy-saving mode, when you stop using it for 0.2s, it will automatically switch into the energy-saving mode, which can extend the battery life.

DPI Switch

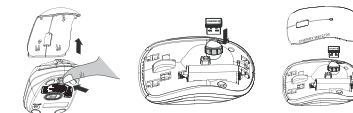
The mouse has 1000/1500/2000 of DPI for your choice freely. The factory default is 1000DPI. You can choose the DPI you like by pressing the key by one time on the bottom of mouse, the LED will flash different times according to the difference DPI.

DPI value	LED flash
1000DPI	One time
1500DPI	Twice
2000DPI	There times



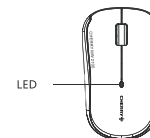
Receiver Build-in design

The mouse is with build-in design, when you stop using the nano USB receiver, it can be stowed away in a hidden compartment inside the mouse. It is more convenient for storing.



Low power indicator

The mouse has low power indicator, when the power is nearly used up, the LED will flash to remind you to replace the battery.



After the power is completely used out, the LED will be off, so please replace the battery in time.

Federal Communications Commission (FCC) Notice:

All other devices shall bear the following statement in a conspicuous location or device: This device complies with Part 15 of the FCC Rules. Operation is subject to the following two conditions:

- (1) this device may not cause harmful interference, and
- (2) this device must accept any interference received, including interference that may cause undesired operation. This equipment has been tested and found to comply with the limits for a Class B digital device, pursuant to part 15 of the FCC Rules. These limits are designed to provide reasonable protection against harmful interference in a residential installation. This equipment generates, uses and can radiate radio frequency energy and, if not installed and used in accordance with the instructions, may cause harmful interference to radio communications. However, there is no guarantee that interference will not occur in a particular installation. If this equipment does cause harmful interference to radio or television reception, which can be determined by turning the equipment off and on, the user is encouraged to try to correct the interference by one or more of the following measures:

- Reorient or relocate the receiving antenna.
 - Increase the separation between the equipment and receiver.
 - Connect the equipment into an outlet on a circuit different from that to which the receiver is connected.
 - Consult the dealer or an experienced radio/TV technician for help.
- CAUTION: Changes or modifications not expressly approved by the part responsible for compliance could void the user's authority to operate the equipment.

CAUTION

RISK OF EXPLOSION IF BATTERY IS REPLACED BY AN INCORRECT TYPE. DISPOSE OF USED BATTERIES ACCORDING TO THE INSTRUCTIONS