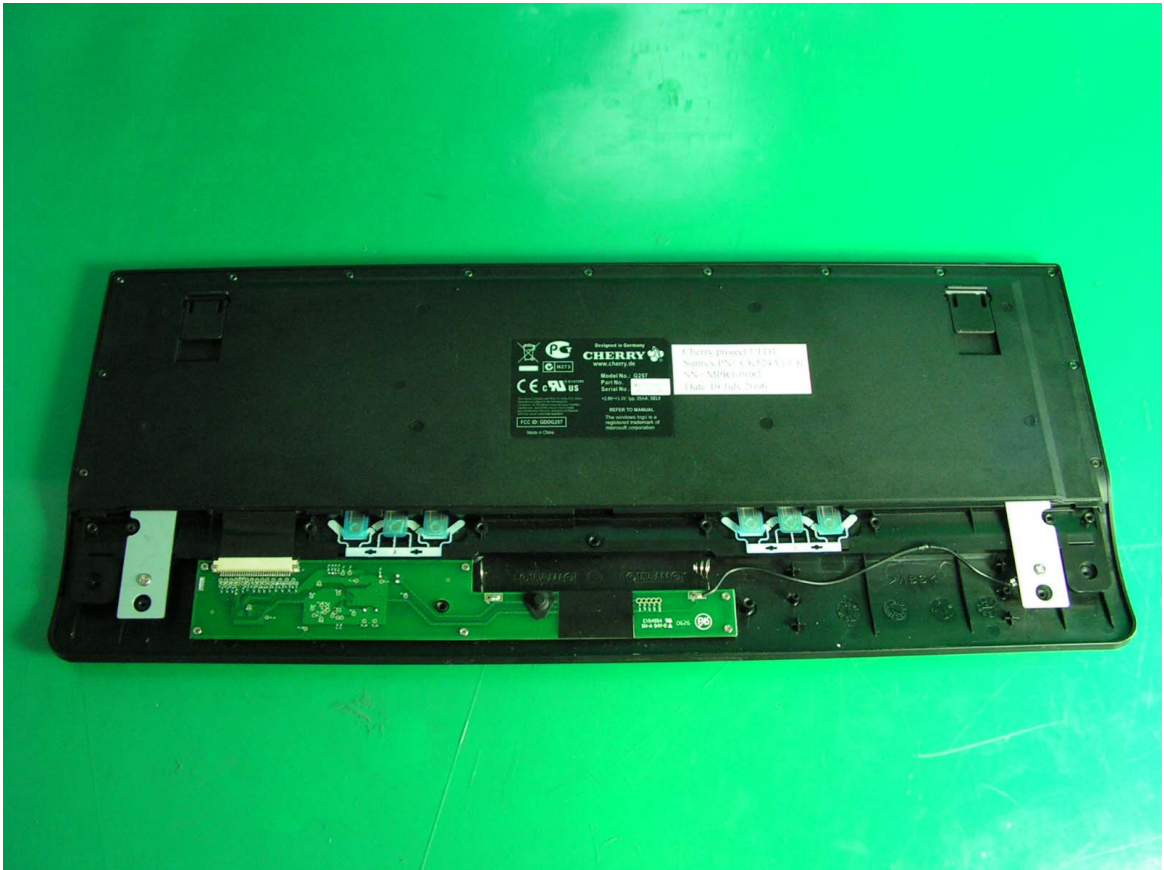
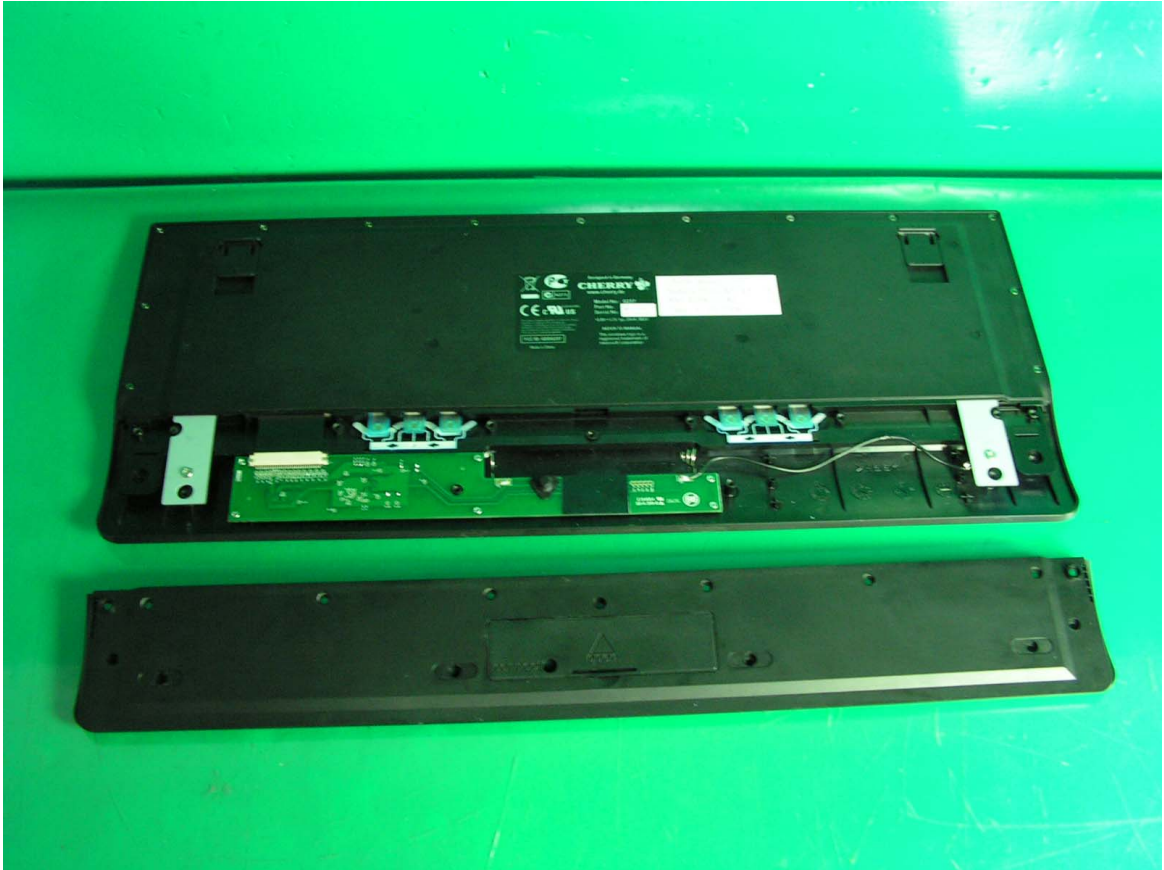
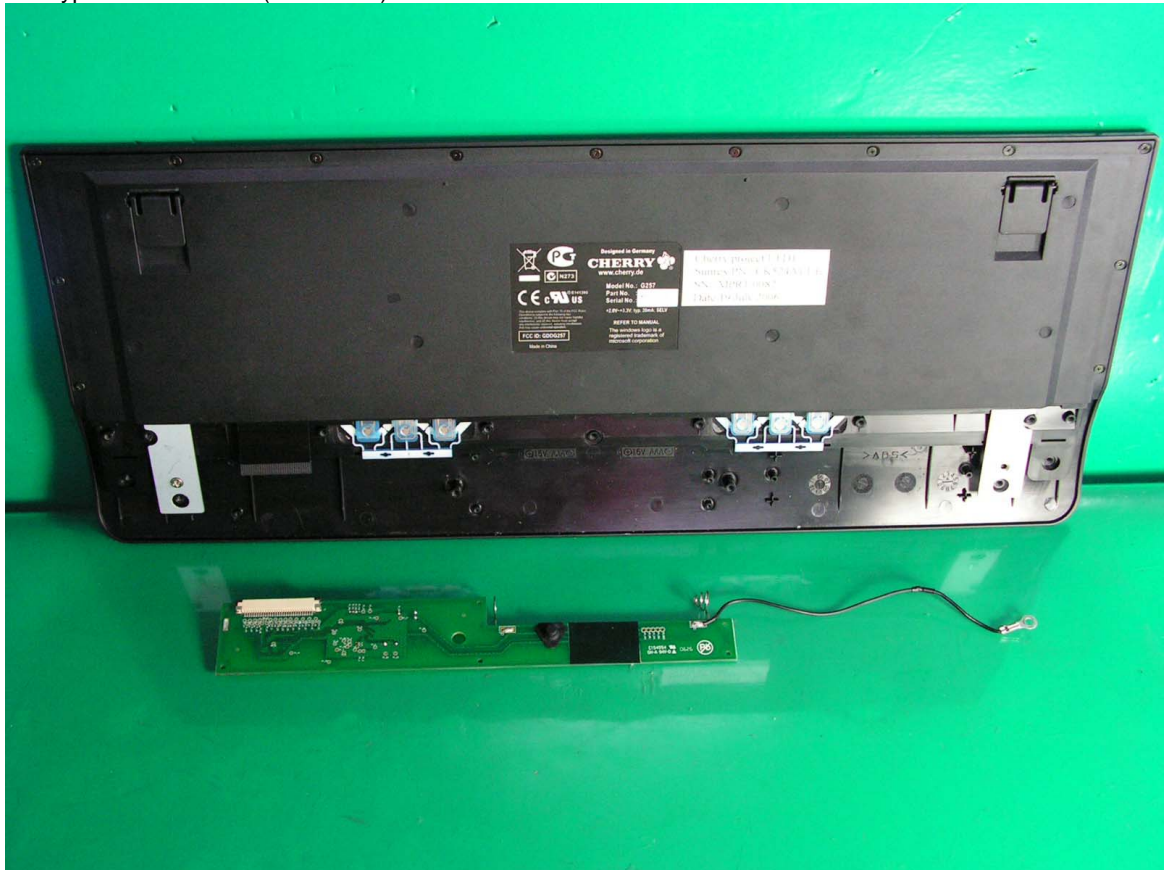


- 5. Remove RF MB Cover
- 6. RF MB Location



7. RF MB Out of Cover

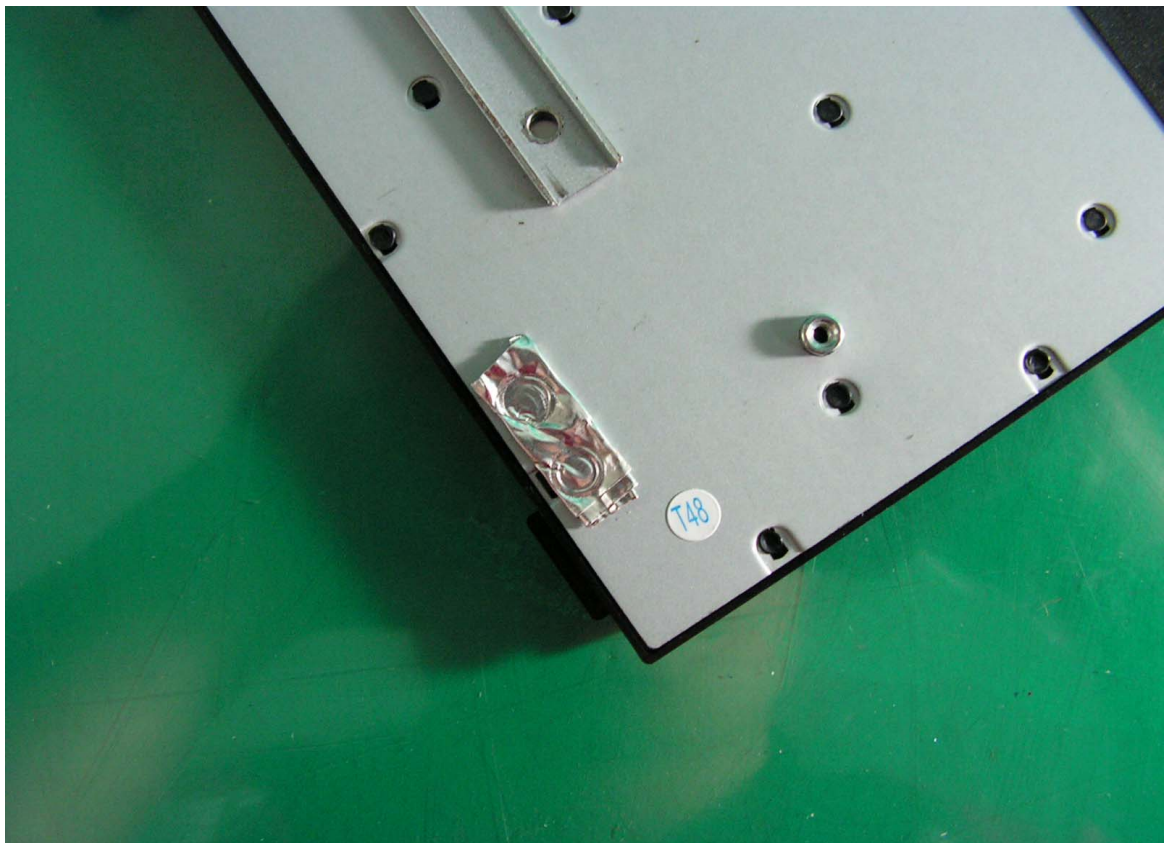
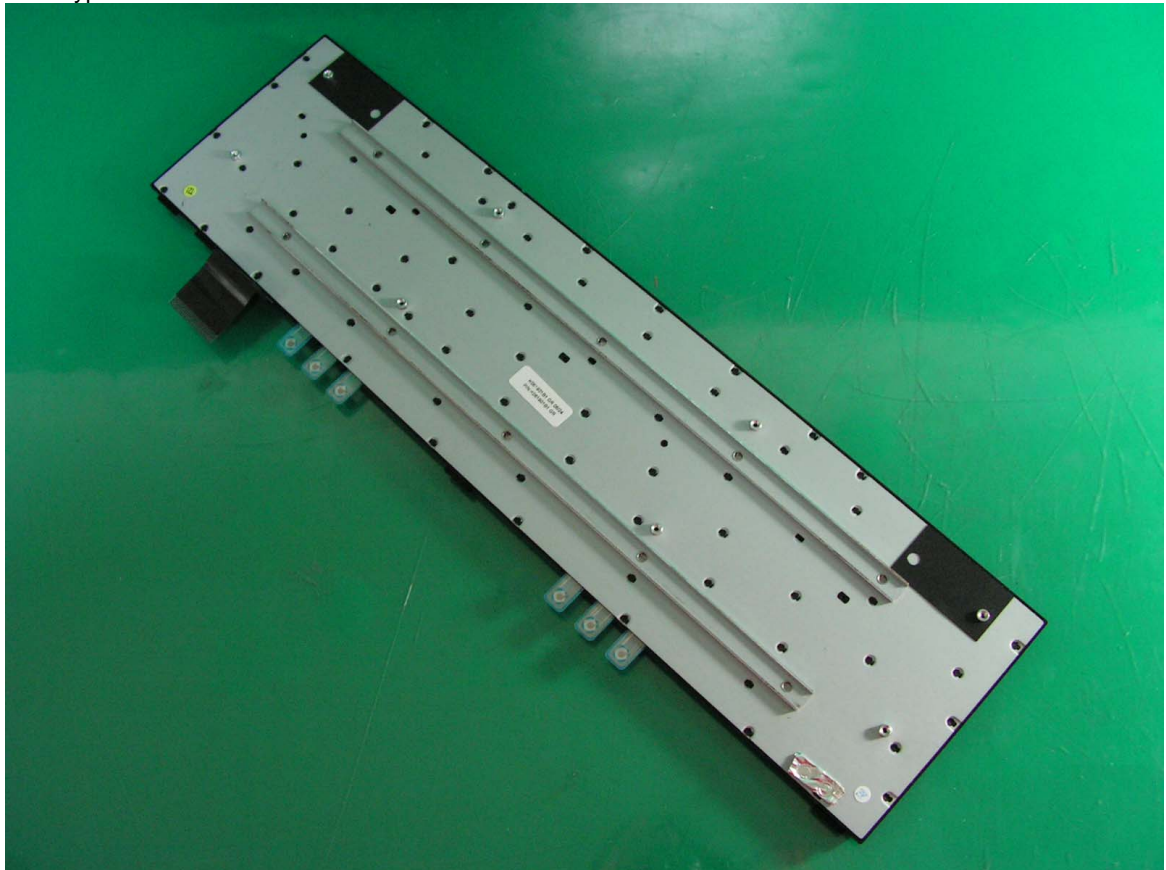
8. Keypad Out of Cover (Front Side)



- 9. Keypad Out of Cover (Rear Side)
- 10. Keypad Front Side

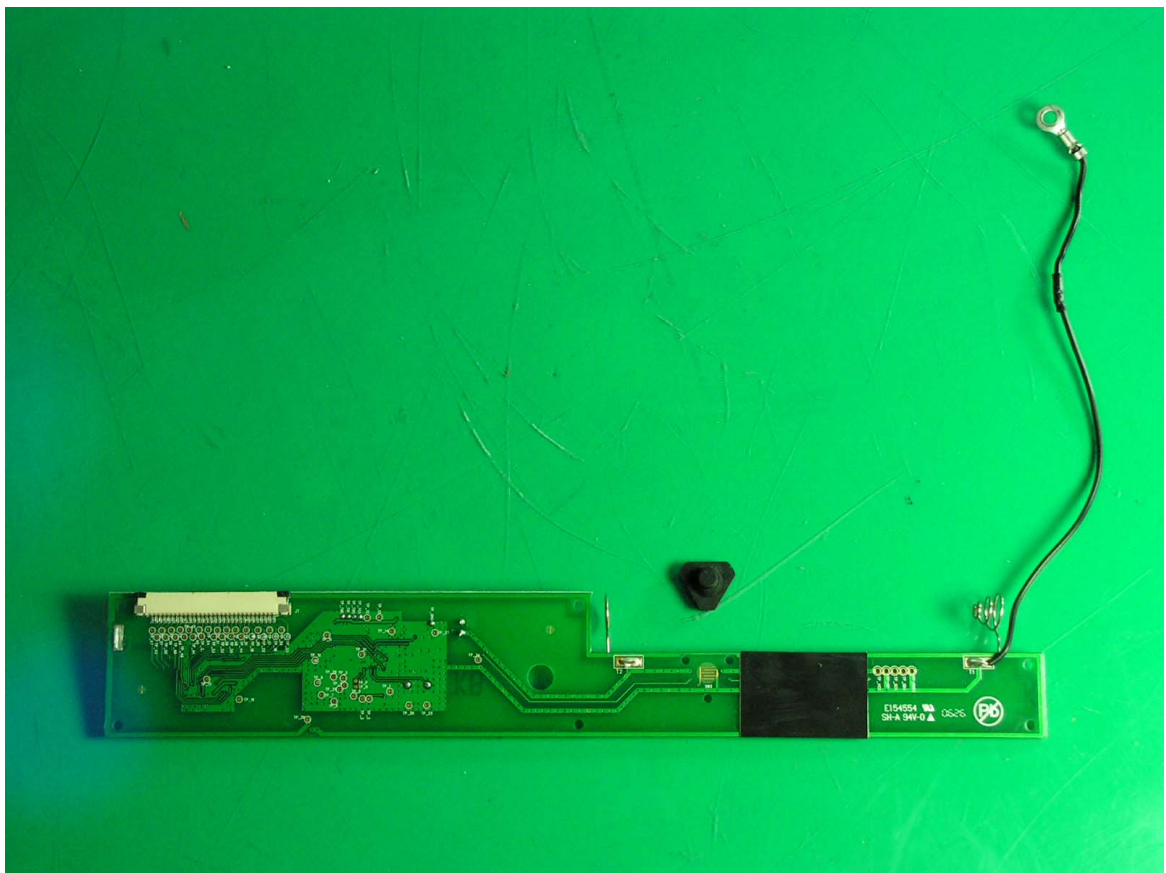
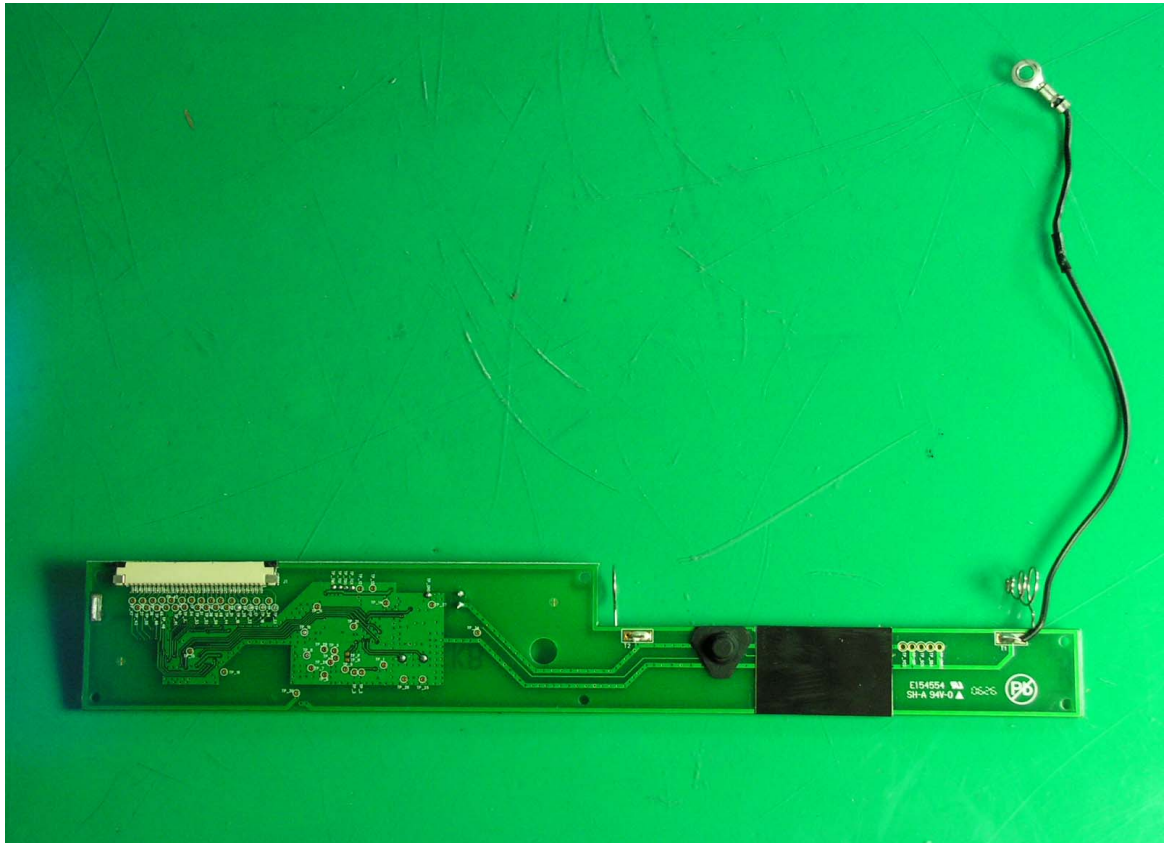


- 11. Keypad Rear Side
- 12. Keypad Rear Side



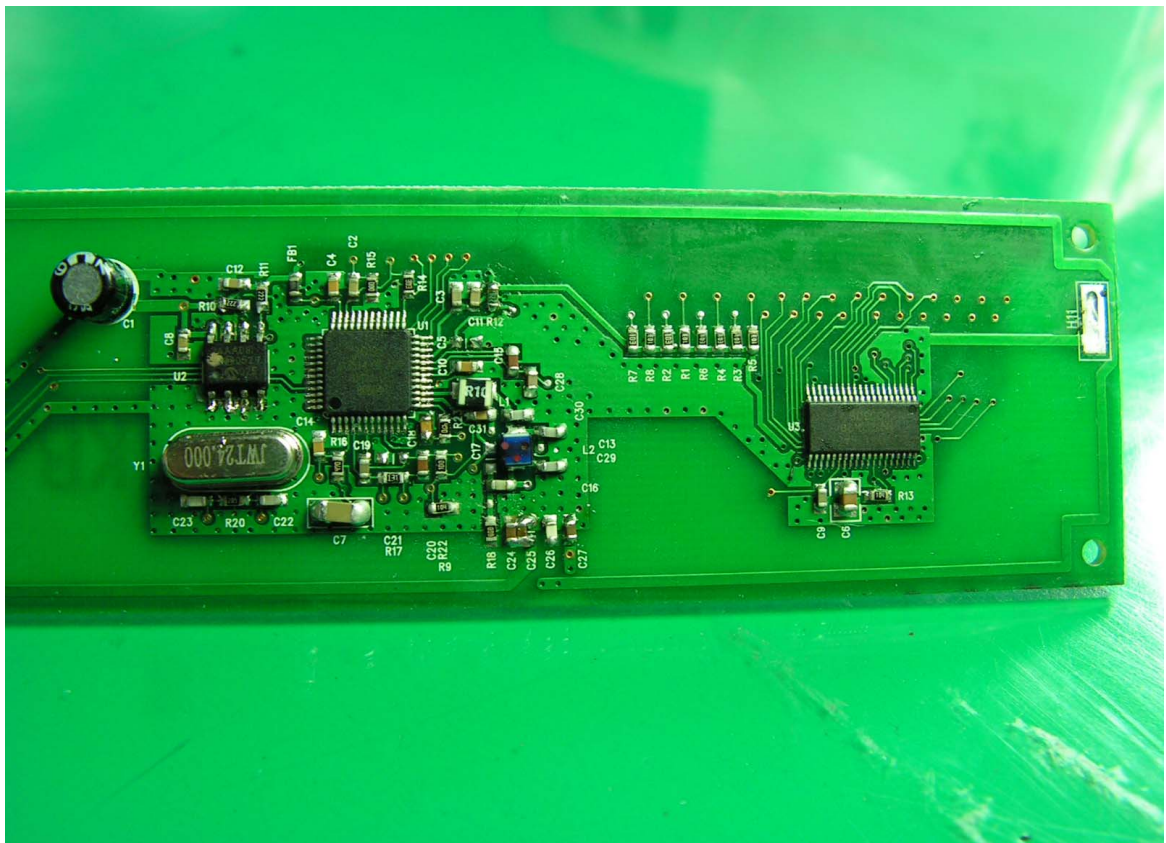
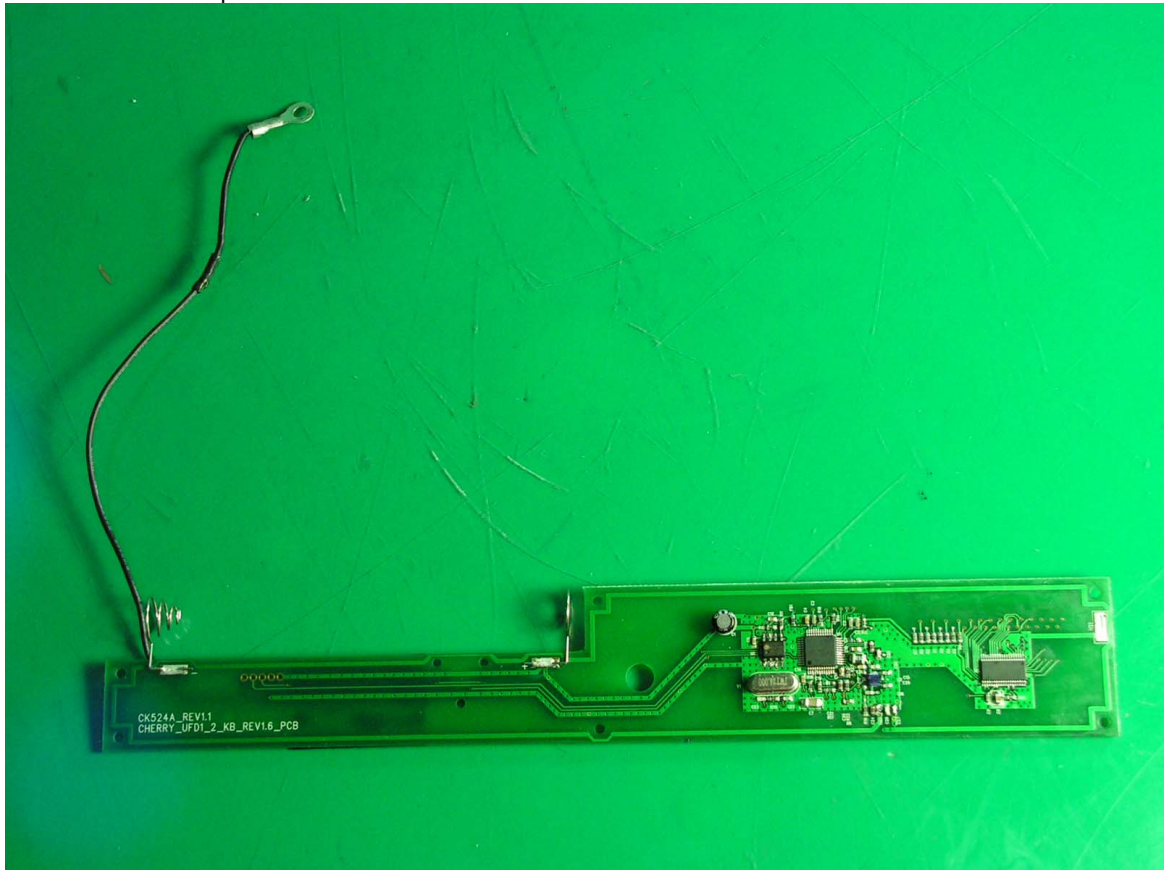
13. RF MB Front Side

14. RF MB Front Side Remove Connect Button Rubber Pad

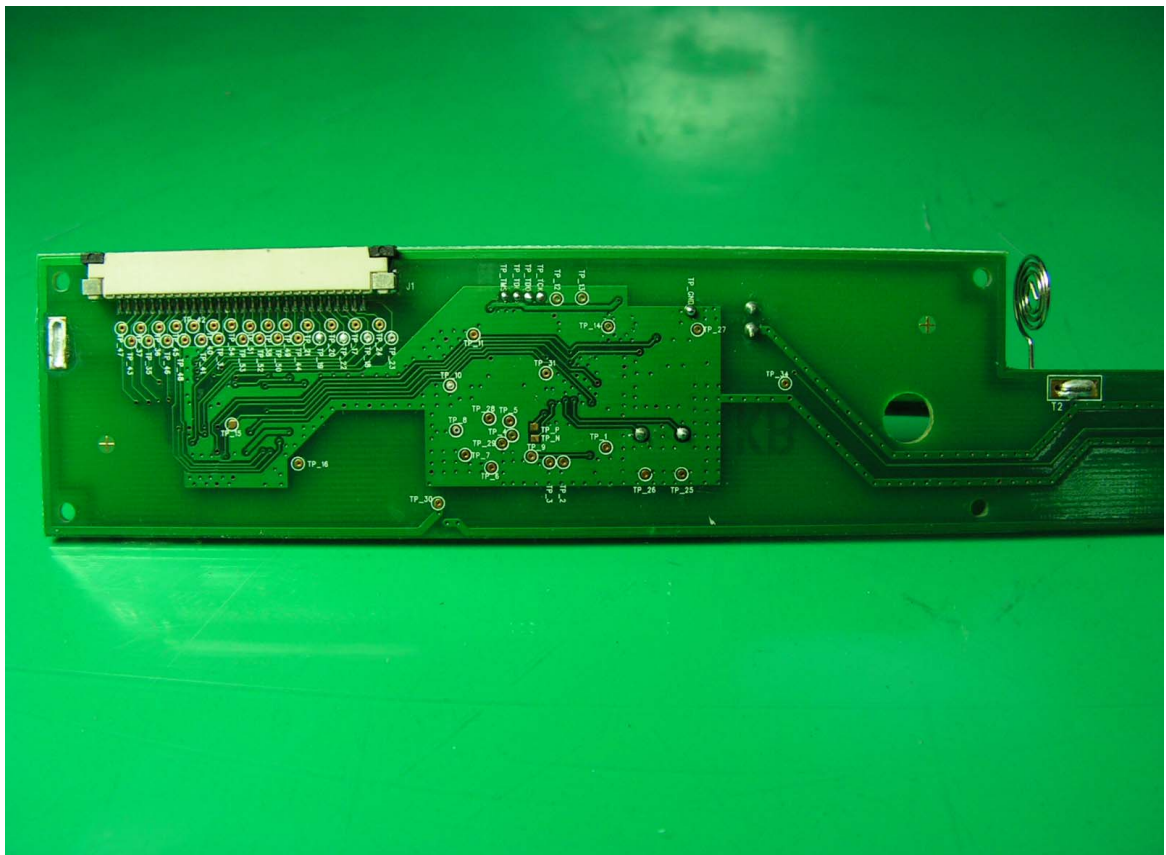
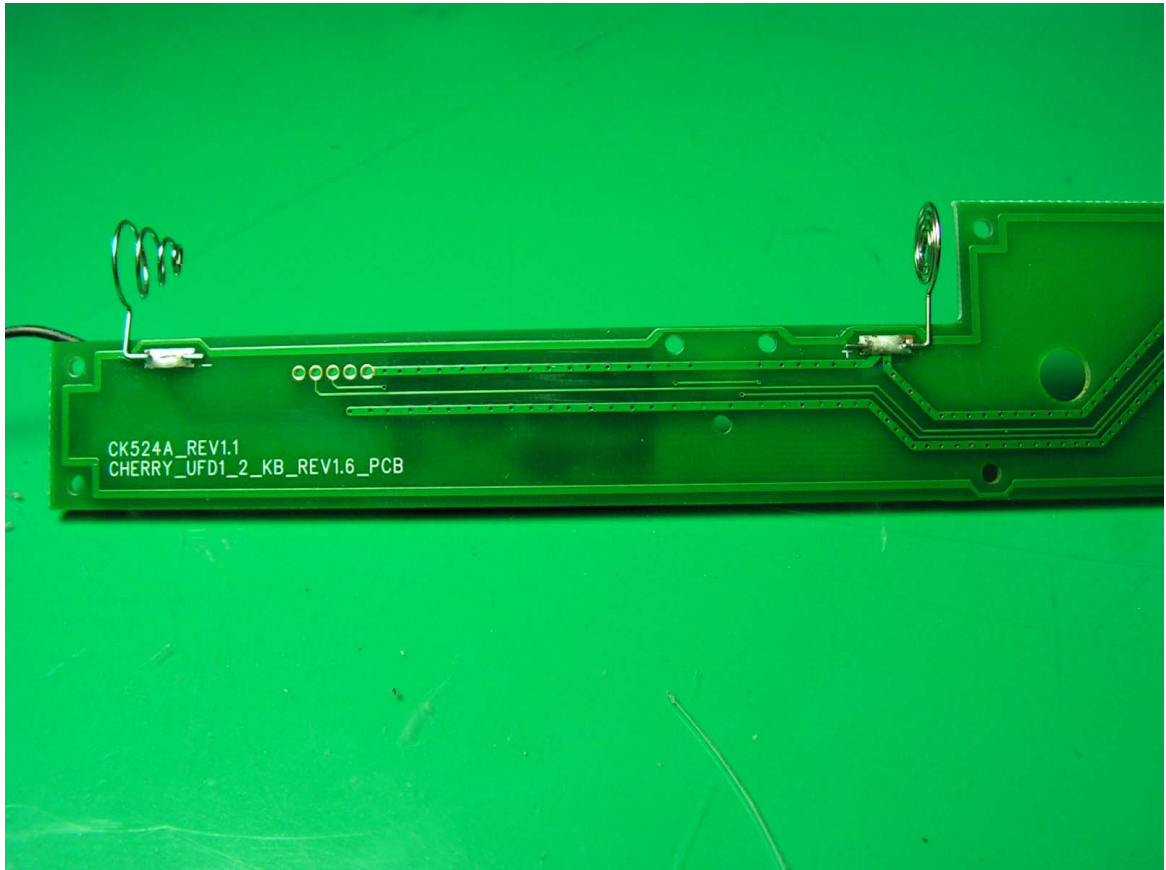


15. RF MB Rear Side

16. RF MB Main Chips Close On

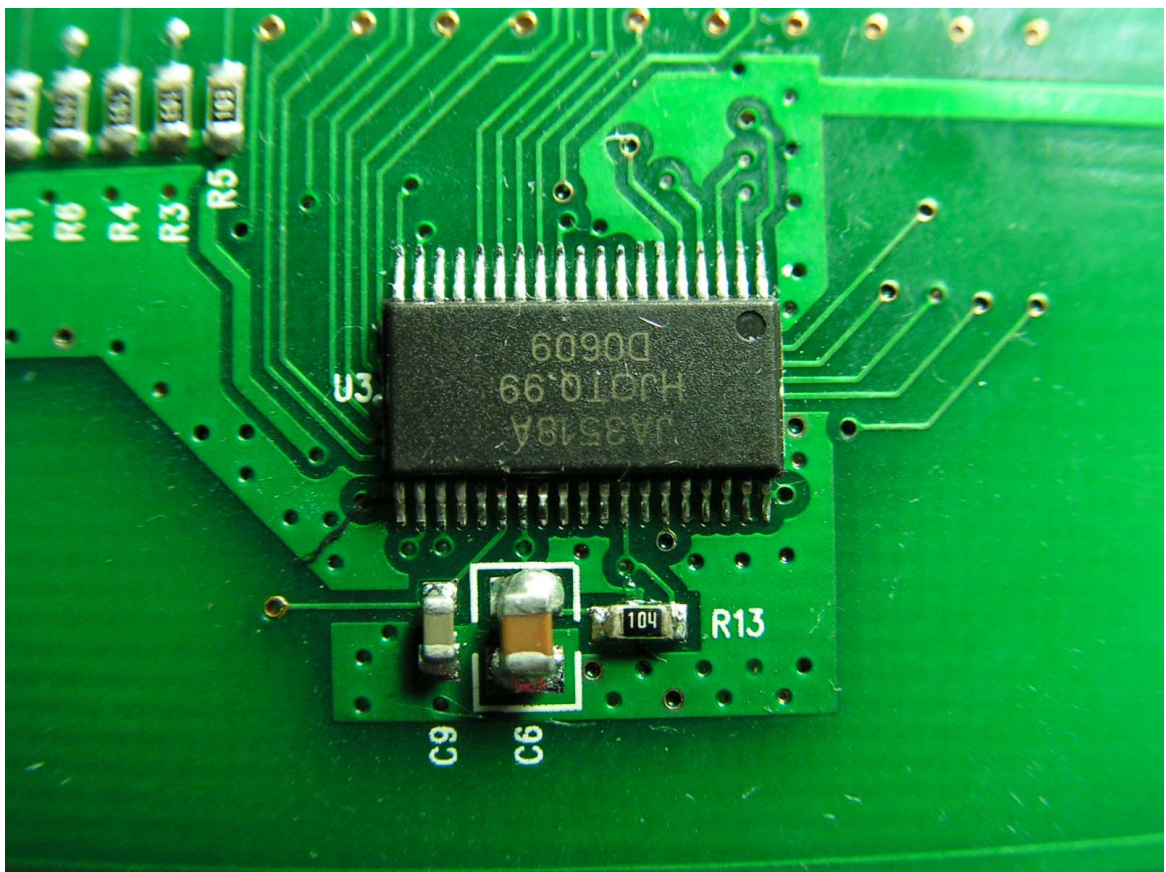
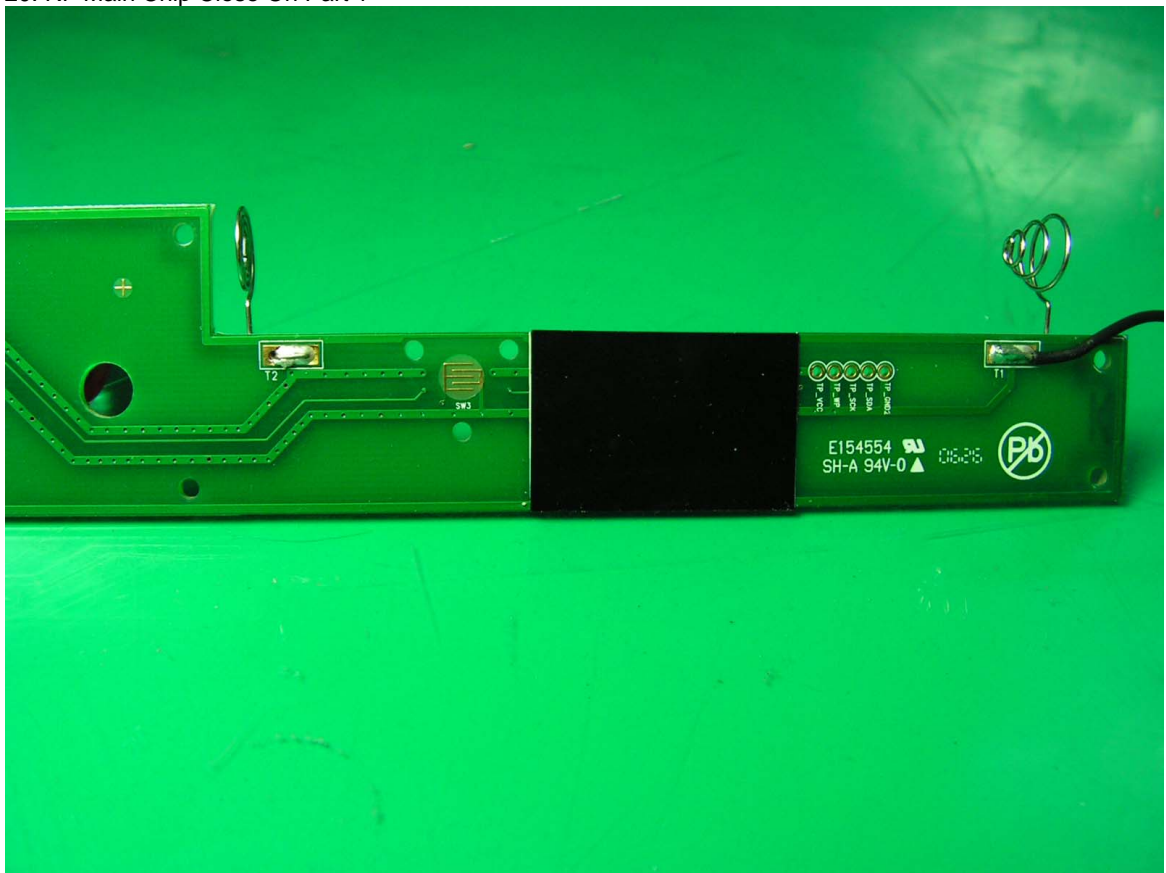


- 17. RF MB Rear Side Part 2 (For Trace)
- 18. RF MB Front Side Panel Connector Close On



19. RF MB Front Side Close On Part 2

20. RF Main Chip Close On Part 1





- 21. RF Main Chip Close On Part 2
- 22. Label Here

