

CHERRY
XTRFY

CHERRY
XTRFY



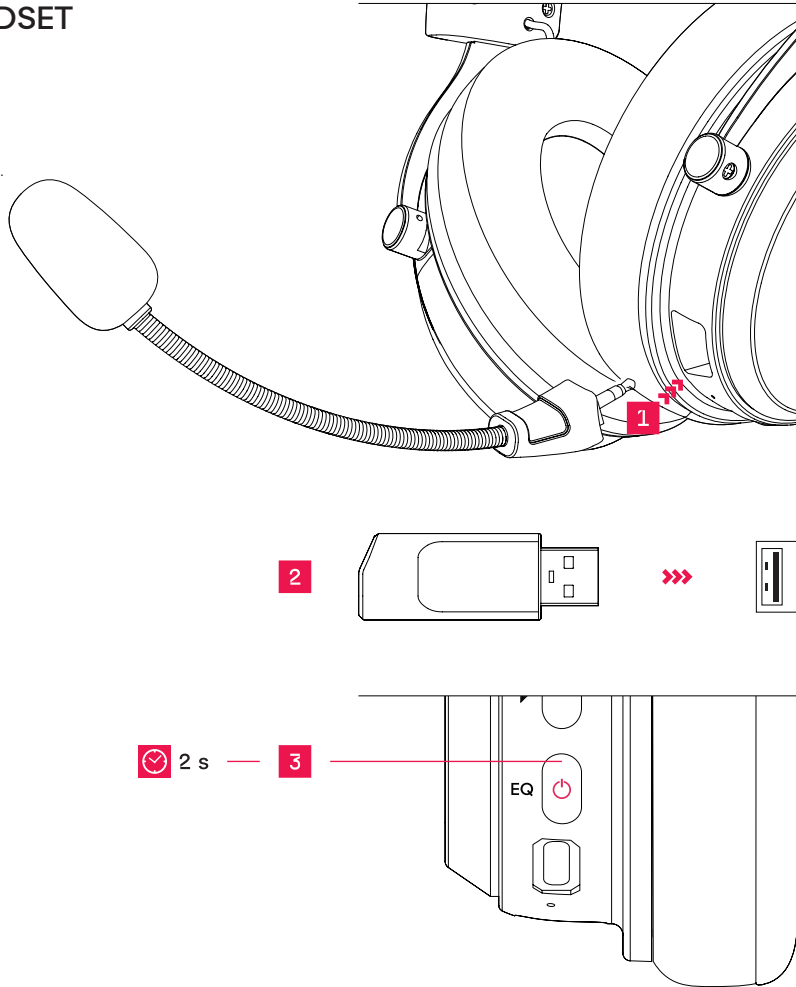
H3 WIRELESS

PMN: H3W

QUICK-START GUIDE • GUIDE DE DÉMARRAGE RAPIDE

CONNECT YOUR HEADSET

- 1 Connect the microphone.
- 2 Plug the receiver into a USB port.
- 3 Turn on the headset.



Dongle Label:

Cherry Europe GmbH
Cherrystraße 2
91275 Auerbach/OPf.
Germany



CHERRY XTRFY H3 WIRELESS

Designed in Sweden 中國製造
Made in China 中國製造

www.cherry-world.com

www.xtrfy.com

P/N 料号: CX-H3W
M/N 型号: CX-H3-R
Rating 额定: 5 V/DC, max. 500 mA



KCC: R-R-CEY-CX-H3-R



IC ID: 3988A-CXH3R
FCC ID: GDDCX-H3-R

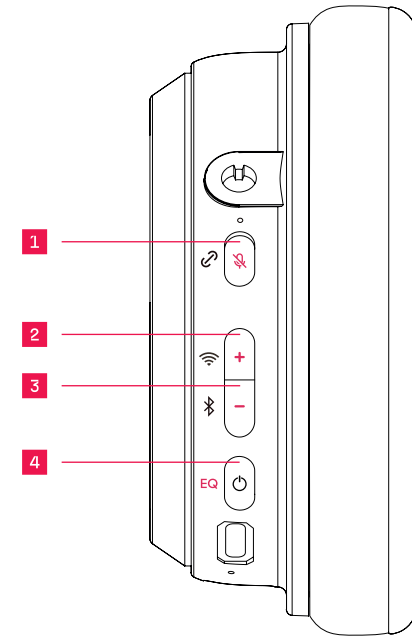


219-248114

This device complies with Part 15 of the FCC Rules. Operation is subject to the following two conditions:
(1) This device may not cause harmful interference, and
(2) this device must accept any interference received, including interference that may cause undesired operation.

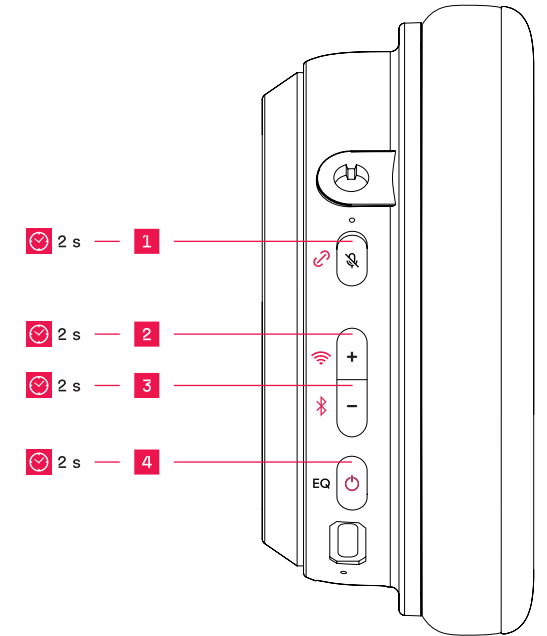
SHORT PRESS

- 1 Microphone mute.
- 2 Volume up.
- 3 Volume down.
- 4 Switch EQ mode.



LONG PRESS

- 1 Pairing/cancel pairing.
- 2 Wireless dongle mode.
- 3 Bluetooth mode.
- 4 Power on/off.



INDICATOR LIGHTS

1 Battery status.

● < 25% ● < 50% ● < 75% ● < 100%

● = Charging.

● = Charging complete.

2 USB-C charging port.

3 Connection status.

Flashing ● = headset not connected.

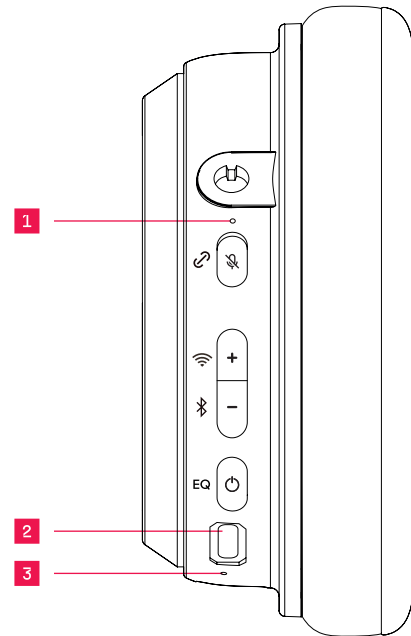
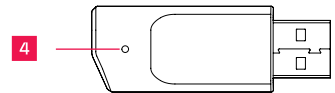
● = Bluetooth connected.

● = Wireless dongle connected.

4 USB dongle connection status.

Flashing ● = USB dongle not connected.

● = USB dongle connected.




ZHt

為了您的安全

- 「Repetitive Strain Injury」= 「重複性勞損」
RSI 是由持續重複的小動作造成的。
- 按照人體工學調整您的工位。
 - 縮短休息間隔，必要時進行伸展運動。
 - 經常變換您的身體姿勢。

裝置的廢棄處理

-  不得將具有此符號的裝置混入生活垃圾一起廢棄處理。
- 根據法律規定，請在您的經銷商處或市政收集點廢棄處理該裝置。

技術數據

名稱	數值
電源電壓	Headset 3.7V/DC USB dongle 5V/DC
耗電量	Headset 最大 25mA USB dongle 最大35mA
充電電壓	5V/DC
充電電流	最大 900mA
發射功率	最大 6.67mW
發射頻率	2.4GHz
電池	2000mAh
藍牙	5.0
存放溫度	-15 °C ... +60 °C
操作溫度	0 °C ... +45 °C

聯絡方式


確勵台灣電子有限公司
大安區光復南路72巷73號2樓
市井商務中心
106 臺北市
電話：+886 2 7746 1776
sales_tpe@cherry.de
www.cherry-world.tw 或 www.cherry-world.com

KR

사용자의 안전을 위해

- “Repetitive Strain Injury” = “반복사용긴장성손상증후군”
RSI는 지속적으로 반복되는 작은 동작으로 인해 발생합니다.
- 작업장을 인체공학적으로 설계하십시오.
 - 자주 짧은 휴식을 취하고 필요 시 스트레칭을 하십시오.
 - 자세를 자주 바꾸십시오.

제품 폐기

-  이 아이콘이 부착된 장치는 가정용 쓰레기로 폐기하지 마십시오.
- 법률 규정에 따라, 현지 대리점이나 지역 재활용 센터에 장치를 폐기하십시오.

기술 데이터

명칭	값
공급 전압	Headset 3.7V/DC USB dongle 5V/DC
소비 전류	Headset 최대 25mA USBdongle 최대 35mA
충전 전압	5V/DC
충전 전류	최대 900mA
송신 출력	최대 6.67mW
송신 주파수	2.4GHz
감전지	2000mAh
블루투스	5.0
보관 온도	-15 °C ... +60 °C
작동 온도	0 °C ... +45 °C



급 기기
(가정용 방송통신기자재)
이 기기는 가정용(B급) 전자파적합기기로서
주요 가정에서 사용하는 것을 목적으로 하며,
모든 지역에서 사용할 수 있습니다.

CN (SIMPLIFIED)

连接耳机

- 1 连接麦克风。
- 2 将接收器插入 USB 端口。
- 3 开启耳机。

短按

- 1 麦克风静音。
- 2 调高音量。
- 3 调低音量。
- 4 切换 EQ 模式。

长按

- 2 s - 1 配对/取消配对。
- 2 s - 2 无线加密狗模式
- 2 s - 3 蓝牙模式。
- 2 s - 4 电源开/关。

指示灯

- 1 电池状态。
● < 25% ● < 50% ● < 75% ● < 100%
● = 充电中。
● = 充电完成。
- 2 USB-C 充电端口。
- 3 连接状态。
闪烁 ● = 未连接耳机。
● = 蓝牙已连接。
● = 已连接无线加密狗
- 4 USB 插头连接状态。
闪烁 ● = 未连接 USB 插头。
● USB 插头已连接。

CN (TRADITIONAL)

連接您的耳機

- 1 連接麥克風
- 2 將接收器插入 USB 連接埠。
- 3 開啟耳機。

短按

- 1 麥克風靜音。
- 2 音量調高。
- 3 音量調低。
- 4 切換 EQ 模式。

長按

- 2 s - 1 配對/取消配對。
- 2 s - 2 無線適配器模式
- 2 s - 3 藍牙模式。
- 2 s - 4 電源開啟/關閉。

指示燈

- 1 電池狀態。
● < 25% ● < 50% ● < 75% ● < 100%
● = 充電中。
● = 充電完成。
- 2 USB-C 充電埠。
- 3 連接狀態。
閃爍 ● = 耳機未連接。
● = 藍牙已連線。
● = 無線適配器已連接
- 4 USB Dongle 連接狀態。
閃爍 ● = USB Dongle 未連接。
● USB Dongle 已連接。

KR

헤드셋 연결

- 1 마이크를 연결합니다.
- 2 수신기를 USB 포트에 꽂습니다.
- 2 s - 3 헤드셋을 켭니다.

짧게 누르기

- 1 마이크를 음소거합니다.
- 2 볼륨을 높입니다.
- 3 볼륨을 낮춥니다.
- 4 EQ 모드를 전환합니다.

길게 누르기

- 2 s - 1 페어링하거나 페어링을 취소합니다.
- 2 s - 2 무선 동글 모드
- 2 s - 3 Bluetooth 모드입니다.
- 2 s - 4 전원을 켜거나 끕니다.

표시등

- 1 배터리 상태입니다.
 - < 25%
 - < 50%
 - < 75%
 - < 100%
- = 충전 중입니다.
- = 충전이 완료되었습니다.
- 2 USB-C 충전 포트입니다.
 - 3 연결 상태.

깜박임 ● = 헤드셋이 연결되지 않았습니다.

● = Bluetooth가 연결되었습니다.

● = 무선 동글 연결
 - 4 USB 동글 연결 상태입니다.

깜박임 ● = USB 동글이 연결되지 않았습니다.

● = USB 동글이 연결되었습니다.

EN

For your safety

- RSI stands for "Repetitive Strain Injury". RSI arises due to small movements continuously repeated over a long period of time.
- Set up your workspace ergonomically.
 - Take several short breaks, with stretching exercises if necessary.
 - Change your posture often.

Device disposal

- Do not dispose of devices with this symbol in household waste.
- Dispose of the devices in accordance with statutory regulations – at your local dealer or at municipal recycling centers.

Technical Data

Designation	Value
Supply voltage	Headset 3.7V/DC USB dongle 5V/DC
Supply current	Headset max 25mA USB dongle max 35mA
Charging voltage	5V/DC
Charging current	Max 900mA mA
Effective radiated power	Max 6.67mW
Operating Frequency	2.4GHz
Battery	2000mA
Bluetooth	5.0
Storage temperature	-15 °C ... +60 °C
Operating temperature	0 °C ... +45 °C

Federal Communications Commission (FCC) Radio Frequency Interference Statement

This device complies with part 15 of the FCC Rules. Operation is subject to the following two conditions: (1) This device may not cause harmful interference, and (2) this device must accept any interference received, including interference that may cause undesired operation.

Note: This equipment has been tested and found to comply with the limits for a Class B digital device, pursuant to part 15 of the FCC Rules. These limits are designed to provide reasonable protection against harmful interference in a residential installation. This equipment generates, uses and can radiate radio frequency energy and, if not installed and used in accordance with the instructions, may cause harmful interference to radio communications. However, there is no guarantee that interference will not occur in a particular installation. If this equipment does cause harmful interference to radio or television reception, which can be determined by turning the equipment off and on, the user is encouraged to try to correct the interference by one or more of the following measures:

- Reorient or relocate the receiving antenna.
- Increase the separation between the equipment and antenna.

- Connect the equipment into an outlet on a circuit different from that to which the receiver is connected.
 - Consult the dealer or an experienced radio/TV technician for help.
- Caution:** Any changes or modifications not expressly approved by the party responsible for compliance could void the user's authority to operate the equipment.

RF Exposure Statement

The device has been evaluated to meet general RF exposure requirement. The device can be used in portable exposure condition without restriction.

EU Declaration of Conformity

CE The company Cherry Europe GmbH, Auerbach/OPf., Germany hereby declares that this radio system model conforms to the European guideline 2014/53/EU. The full text of the EU declaration of conformity can be found under the following internet address: www.cherry.de/compliance.

Contact For Europe

Cherry Europe GmbH
Cherrystraße 2
91275 Auerbach/OPf.
Germany
Internet: www.cherry-world.com or www.cherry.de

For USA

Cherry Americas, LLC
5732 95th Avenue
Suite 850
Kenosha, WI 53144, USA
Tel.: +1 262 942 6508
Email: sales@cherryamericas.com
Internet: www.cherry-world.com or www.cherry.de

UK Authorised Representative

Authorised Representative Service
The Old Methodist Chapel
Great Hucklow SK17 8RG, UK

ZHs

为了您的安全

- "Repetitive Strain Injury"="重复性劳损". RSI 是由于频繁重复的小幅度运动造成的。
- 按照人体工程学调整您的工作位置。
 - 多加休息，必要时进行伸展运动。
 - 经常变换您的身体姿势。

设备的废弃处理

- 不得将具有此符号的设备混入生活垃圾一同废弃处理。
- 根据法律规定，在您的经销商处或市政收集点废弃处理该设备。

技术参数

名称	数值
电源电压	Headset 3.7V/DC USB dongle 5V/DC
电流消耗	Headset 最大 25mA USBdongle 最大 35mA
充电电压	5V/DC
充电电流	最大 900mA
发射功率	最大 6.67mW
发射频率	2.4GHz
电池	2000mA
蓝牙	5.0
存放温度	-15 °C ... +60 °C
运行温度	

联系方式

珠海确励电子有限公司
珠海市高新区唐家湾镇金园一路 8 号
519060 珠海, 广东
电话: 400-699-0333
sales_cn@cherry.de
www.cherry-world.com

ISED Compliance Statement

This device contains licence-exempt transmitter(s)/receiver(s) that comply with Innovation, Science and Economic Development Canada's licence-exempt RSS(s). Operation is subject to the following two conditions:

- (1) This device may not cause interference.
- (2) This device must accept any interference, including interference that may cause undesired operation of the device.

L'émetteur/récepteur exempt de licence contenu dans le présent appareil est conforme aux CNR d'Innovation, Sciences et Développement économique Canada applicables aux appareils radio exempts de licence. L'exploitation est autorisée aux deux conditions suivantes :

- (1) L'appareil ne doit pas produire de brouillage;
- (2) L'appareil doit accepter tout brouillage radioélectrique subi, même si le brouillage est susceptible d'en compromettre le fonctionnement.

ISED Radiation Exposure Statement

The device has been evaluated to meet general RF exposure requirement. The device can be used installed and operated with minimum distance 0mm between the radiator and your body.

L'appareil a été évalué pour répondre aux exigences générales d'exposition aux RF. Cet équipement doit être installé et utilisé avec une distance minimale de 0 mm entre le radiateur et votre corps.

This device meets the exemption from the routine evaluation limits in section 2.5 of Rss 102 and compliance with RSS 102 RF exposure, users can obtain Canadian information on RF exposure and compliance.

Cet appareil est conforme à l'exemption des limites d'évaluation courante dans la section 2.5 du cnr 102 et conformité avec rss 102 de l'exposition aux rf les utilisateurs peuvent obtenir des données canadiennes sur l'exposition aux champs rf et la conformité.

This equipment complies with Canada radiation exposure limits set forth for an uncontrolled environment.

Cet équipement est conforme aux limites d'exposition aux rayonnements du Canada établies pour un environnement non contrôlé.