

1 Annex C – documentation

1.1 List of Pictures

Picture 1: EUT - top side, without covering cap2

Picture 2: EUT – flex board layer – top side2

Picture 3: EUT – flex board layer – bottom side3

Picture 4: EUT – main pcb – top side3

Picture 5: EUT – main pcb – bottom side4

Picture 6: EUT – RFID / chip card reader – top view4

Picture 7: Picture 8: EUT – RFID / chip card reader – bottom view5

Picture 9: EUT – bottom with metal plate5

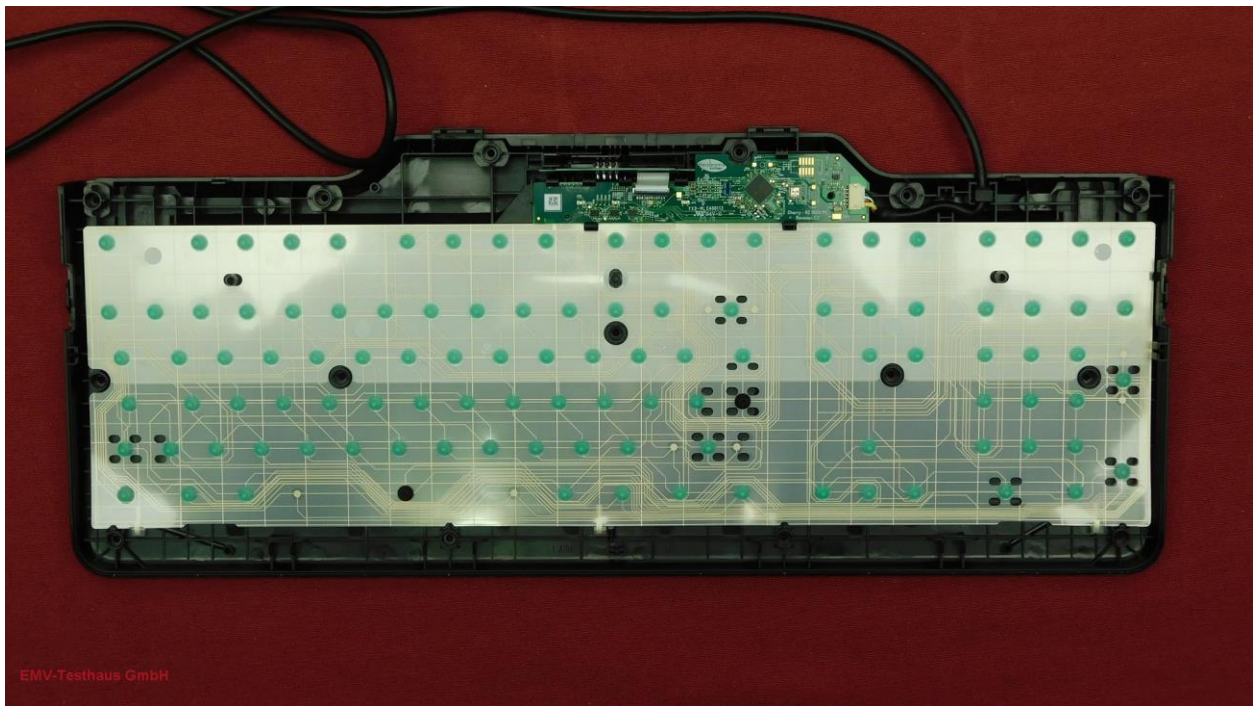


EMV **TESTHAUS** GmbH
Gustav-Hertz-Straße 35
94315 Straubing
Germany

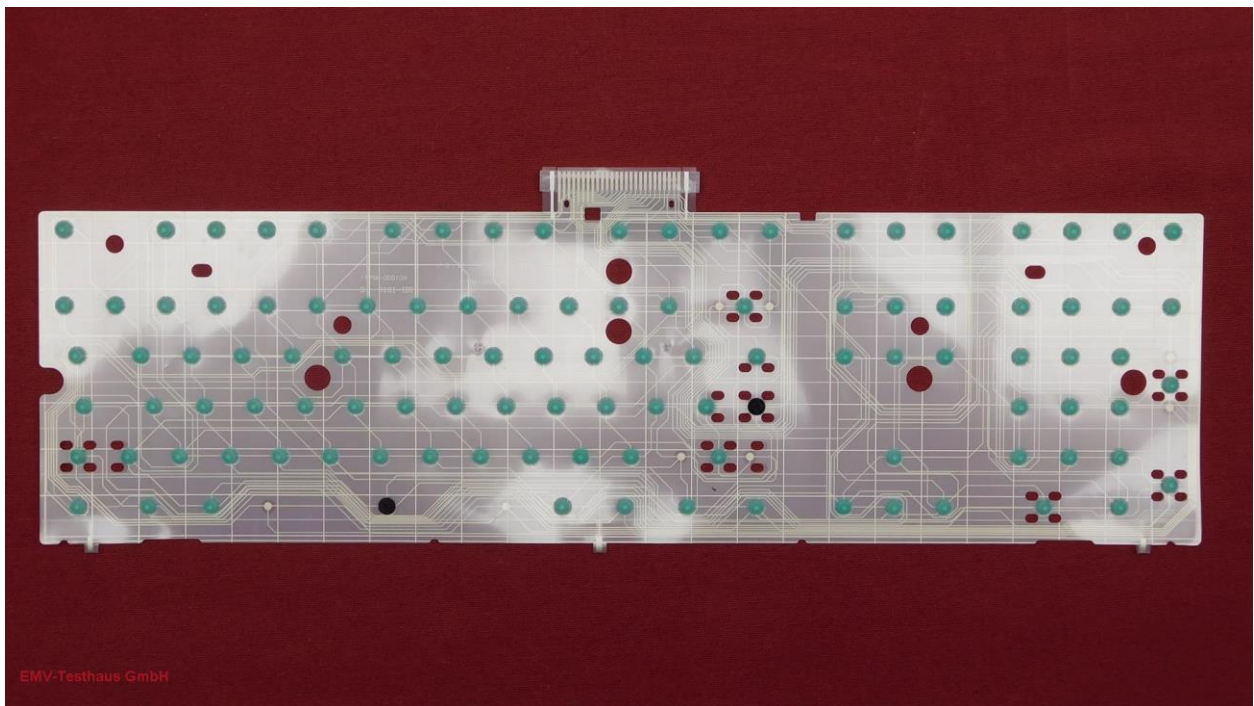
Cherry GmbH
Keyboard with RFID reader and chip card reader
JK-A04

190711-AU01+W02
Annex C

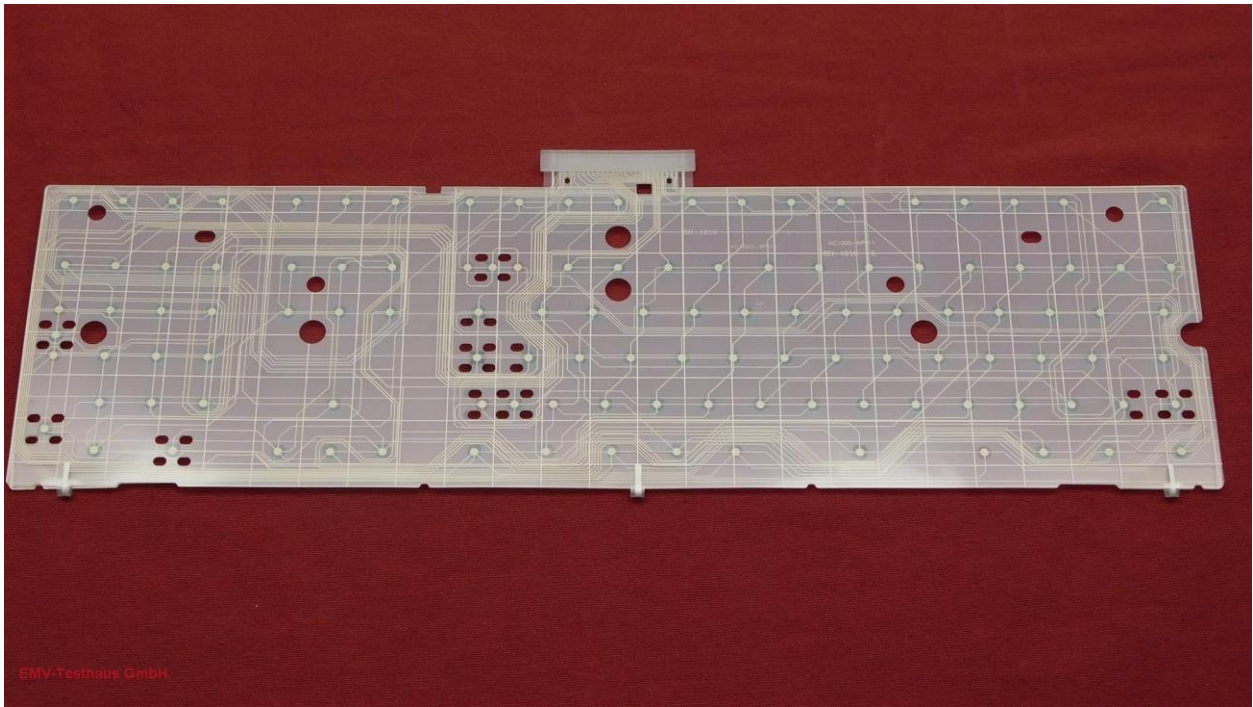
Page 1 of 5



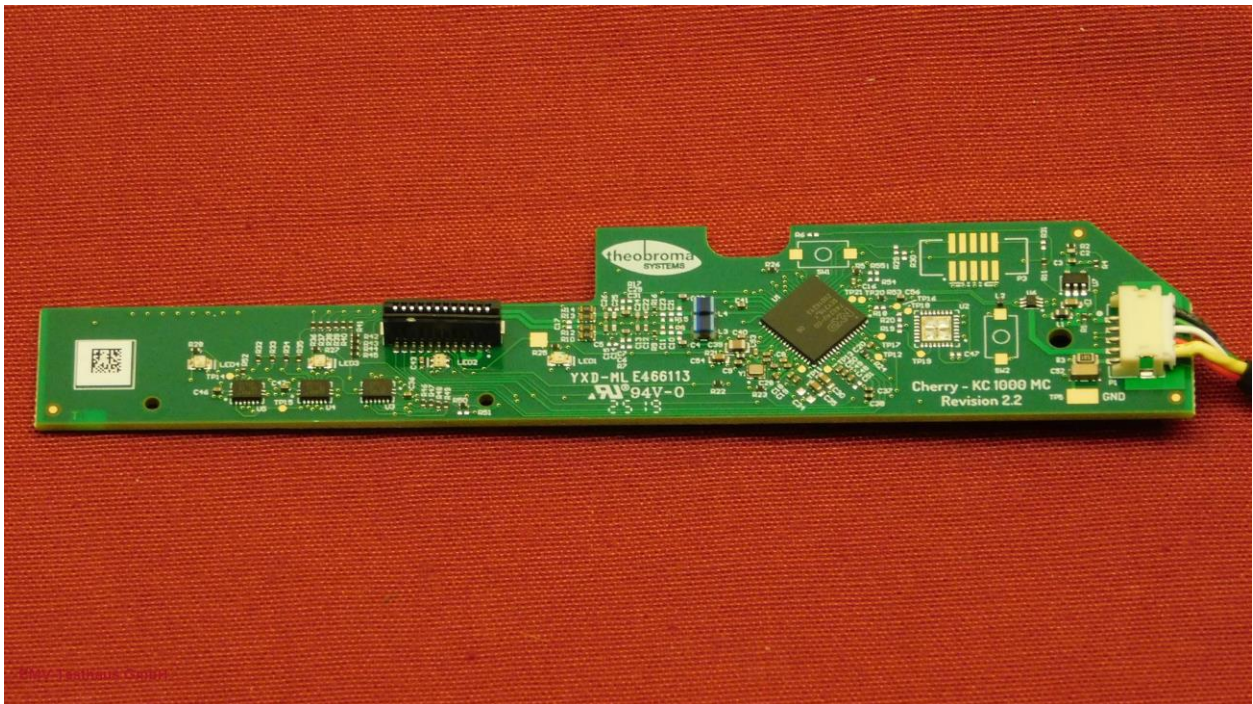
Picture 1: EUT - top side, without covering cap



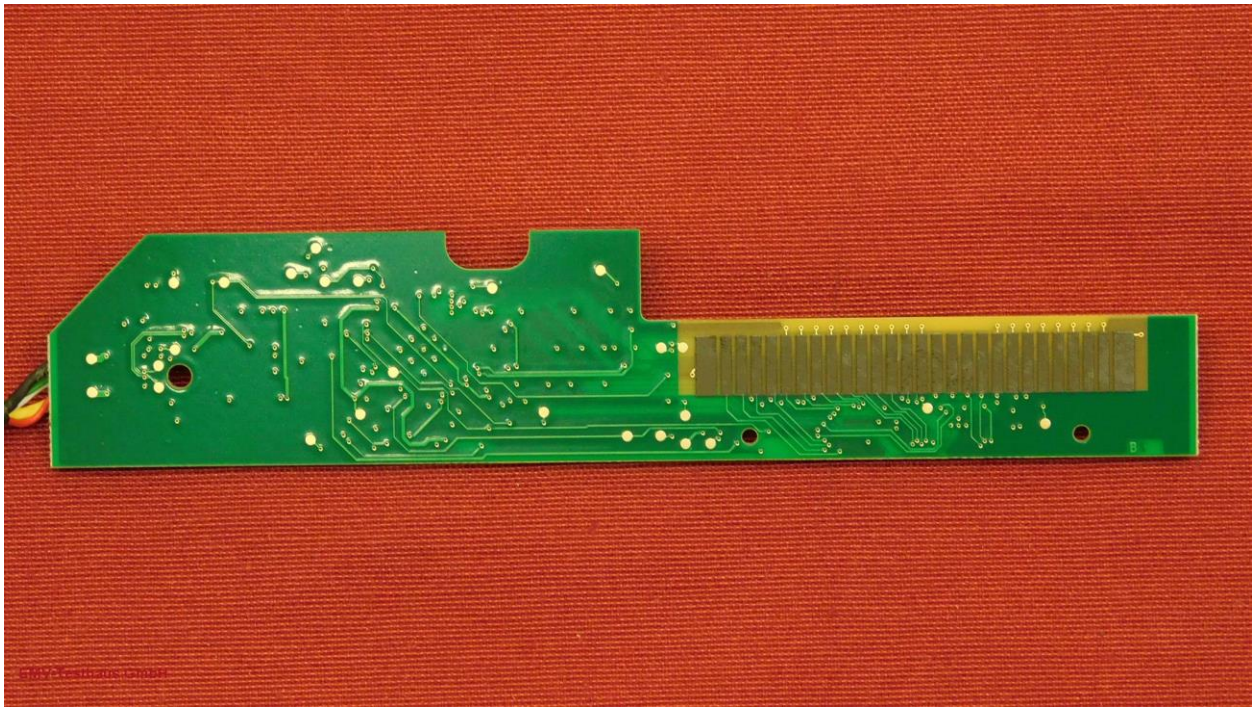
Picture 2: EUT – flex board layer – top side



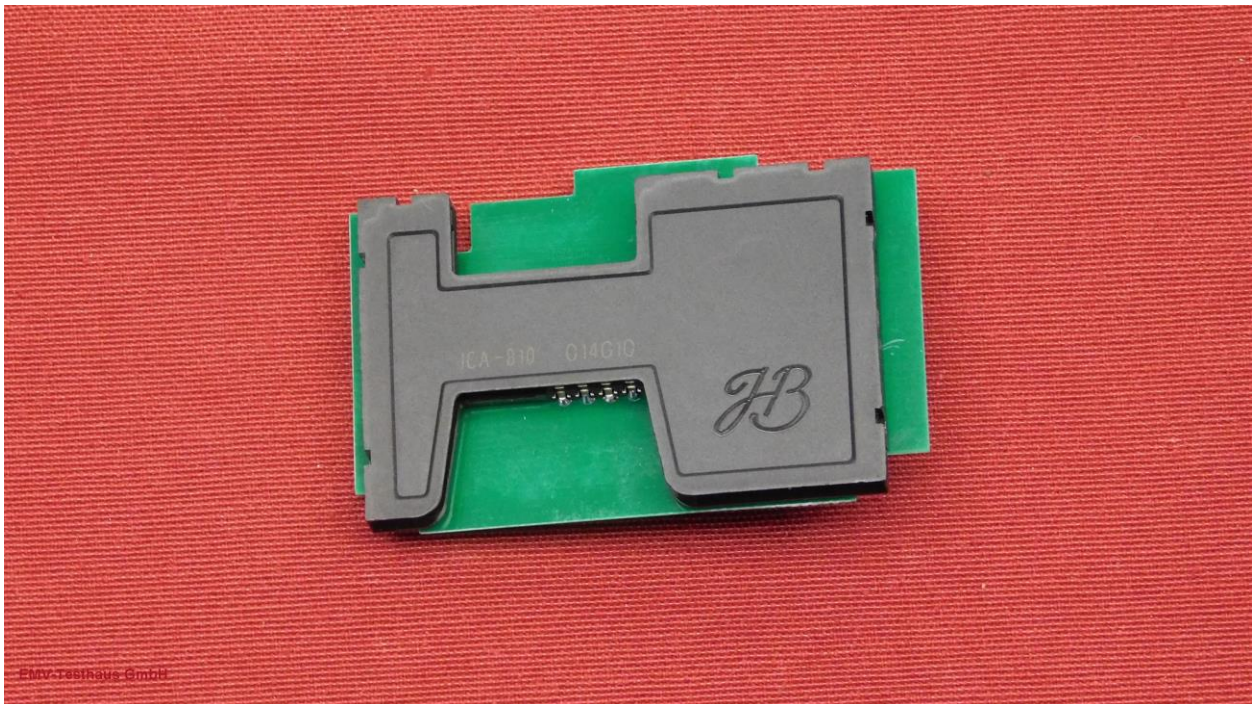
Picture 3: EUT – flex board layer – bottom side



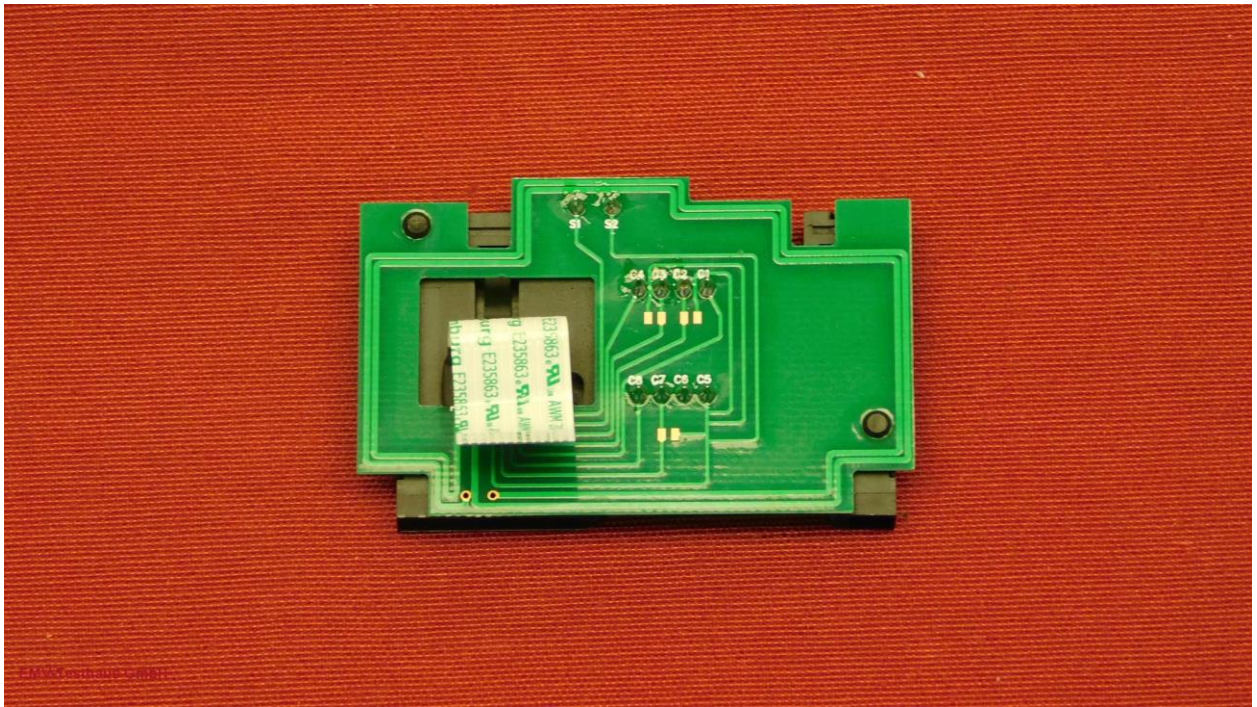
Picture 4: EUT – main pcb – top side



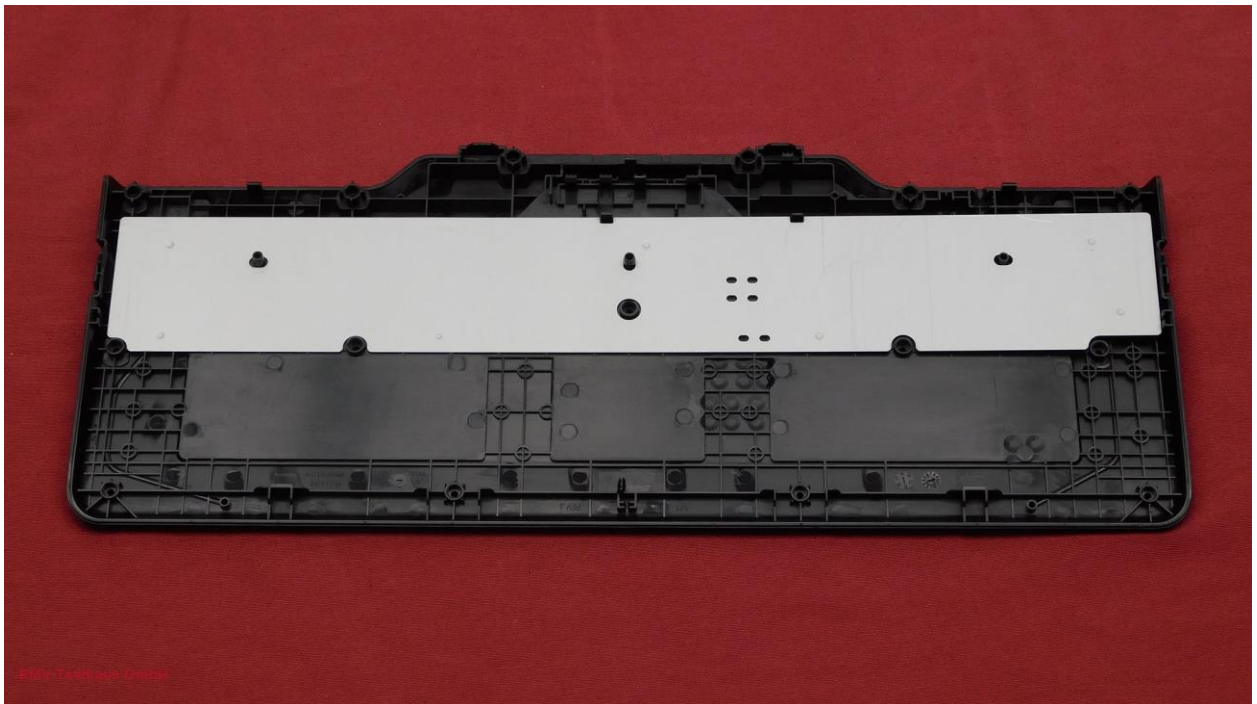
Picture 5: EUT – main pcb – bottom side



Picture 6: EUT – RFID / chip card reader – top view



Picture 7: Picture 8: EUT – RFID / chip card reader – bottom view



Picture 9: EUT – bottom with metal plate