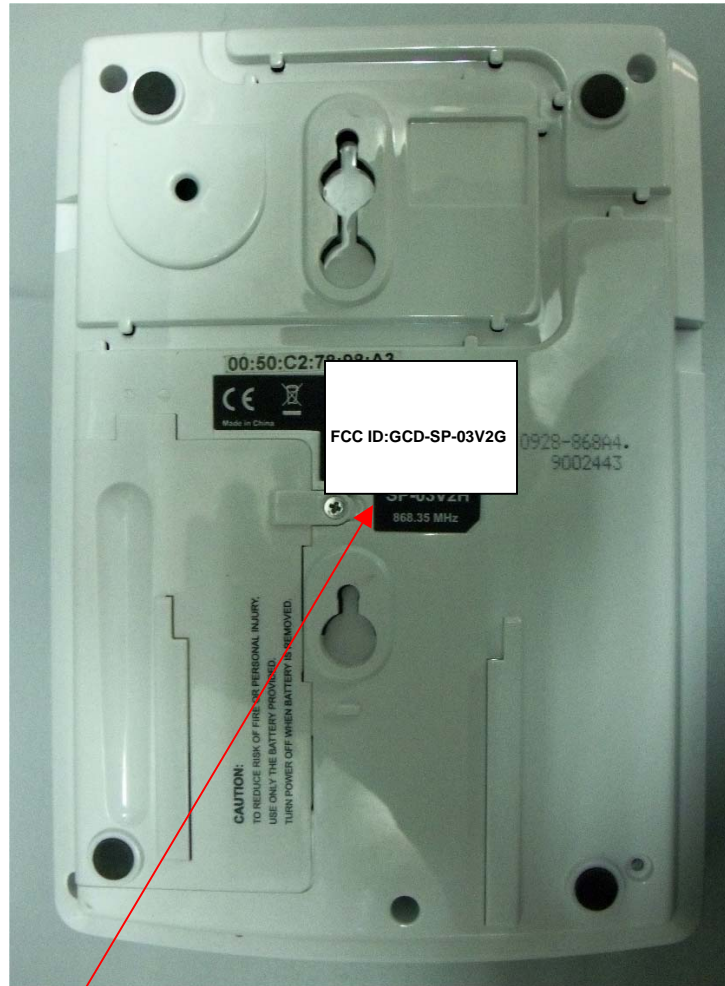


## Label location

The label is affixed on the rear side of the wireless expansion unit as shown below.  
The label material is PVC with a permanent adhesive.



The label with **FCC ID:GCD-SP-03V2G** will be located here.

A

B

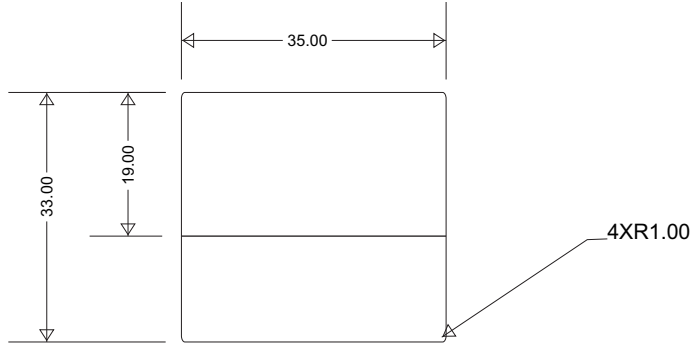
**CONTROLLED DRAWING**

This drawing is the property of RESL and can not be copied or loaned without written permission.

VER	REV	DETAIL	NAME	DATE	APPROVAL	DATE
A	0	The first issue	DONNA	21 Sept 10		

1

1



2

2



3

3

1. Material: Synthetic paper with back adhesive+PP coating
2. Color - Background : White  
Foreground : Black; Pantone 485C-Red
3. Font - Arial
4. Part must be RoHS compliant

4

4

UNLESS OTHERWISE SPECIFIED				PROJECT	SECURITY PRODUCT		DRAWN	DATE		
				MODEL	SP03V2G		DONNA	21 April 11		
OPTION	DECIMAL			DESCRIPTION	LABEL, FCC		CHECKED	DATE		
XX	1.00	0.50	0.10	PART NO.	0601-	MATERIAL	APPROVED	DATE		
XX.X	0.30	0.10	0.05			See note				
XX.XX	0.10	0.02	0.01	FINISH	As indicated	QUANTITY	SCALE	UNIT		
XX.XXX	0.01	0.005	0.002			1	1 : 1	MM		
RADIUS R05 = 0.050 R1 = 0.100 R2 = 0.200 R5 = 0.500 XR = R MAX.				CHAMFERS C01 = 0.10 X 45 C02 = 0.20 X 45 C05 = 0.50 X 45 C1 = 1.00 X 45 S = STONE				ANGLE 0 - 30° EDM (VDI) 27 - 30		
SURFACE: ▽ ▽ ▽ ▽ ▽ ▽ ▽ ▽								CAD FILE SP03V2G FCC LABEL.cdr		
				DWG NO. 72183				SHEET OF 1 1		
				Rosslare Electronics (Shenzhen) Ltd.						

A

B