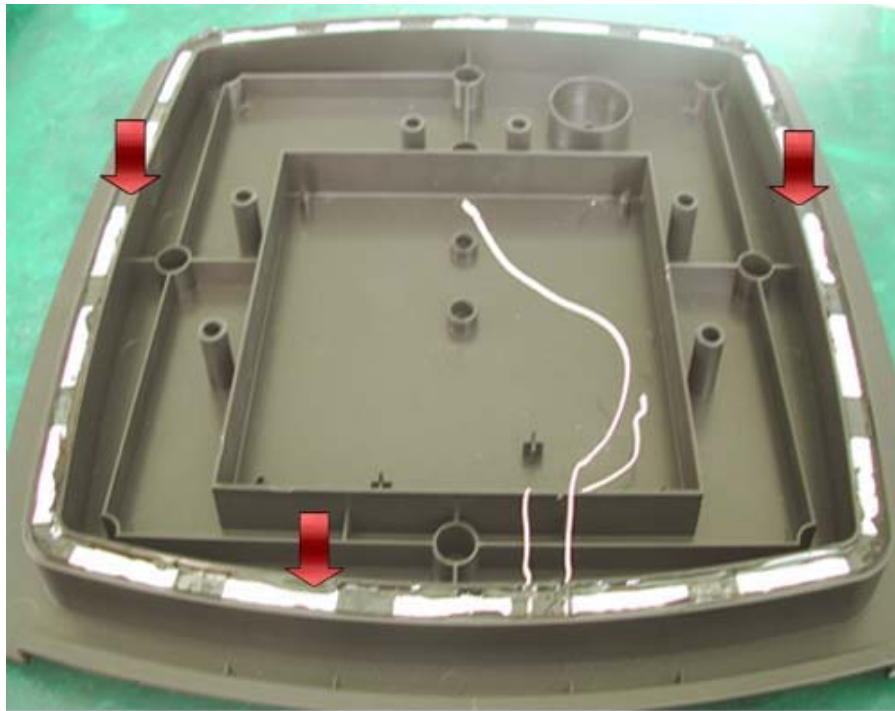


**FCC ID: GCD-AY-Z12**

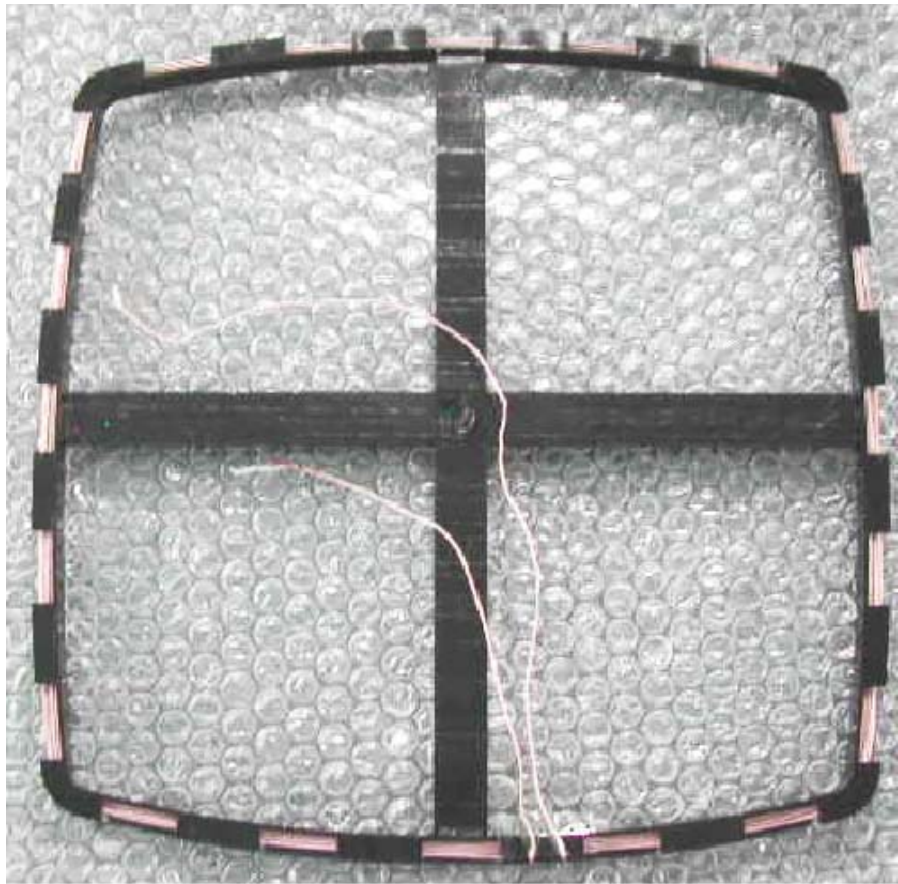
**Subject: INTERNAL PICTURES for AY-Z12 LONG RANGE READER**



Here we can already see the back plastic case, of the AY-Z12 , placed into the back case of the AY-Z12 Reader, and connected to the Antenna Litz Wire. You cannot see the Antenna, because it is covered by potting material.



Here we can see the Plastic Loop Antenna Bobbin, after it has been removed from the frame/support and inserted into the plastic groove, and then covered with potting material. The red arrows show the area where the Antenna Bobbin fits into the groove, with the wire antenna wound on it.



Here we can see the AY-Z12 Plastic Antenna Bobbin, with the wound Litz Wire, before it is sepetated from the plastic frame/support and placed in the slot in the plastic case.



