

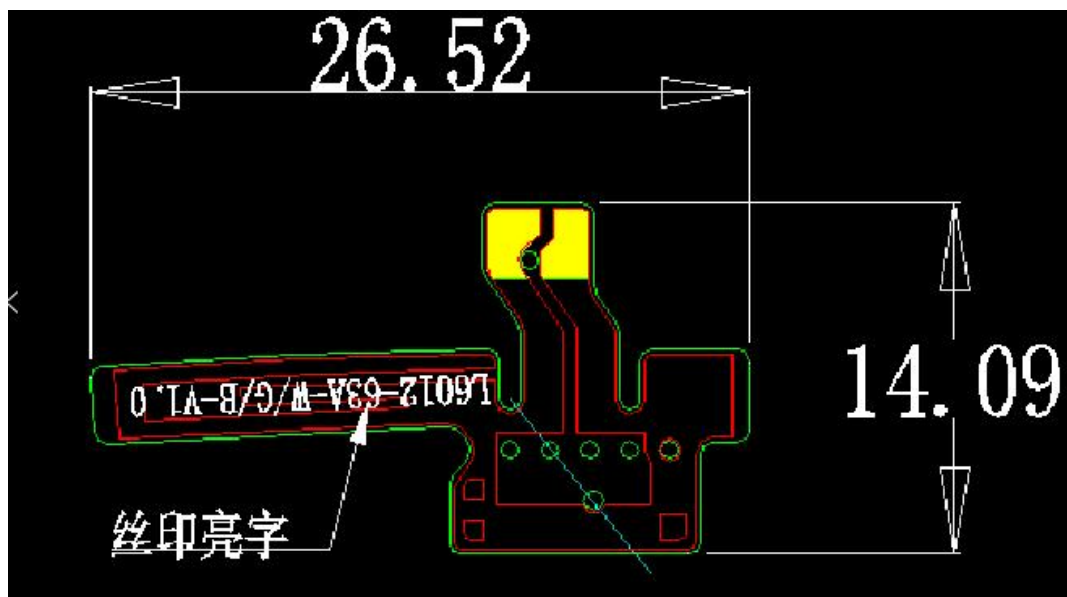
# ANTENNASPECIFICATION

Manufacturer: SHENZHEN Xingyuanchuang TECHNOLOGY CO., LTD

BT+BLE+2.4GWIFI Antenna frequencyrange: 2400M-2500M

Antenna gain: -0.06dBi(Max)

(1) The antenna size



(2) Data

Passive Test For WiFi/BT			
Freq (MHz)	Effi (%)	Effi (dB)	Gain (dBi)
2400	41.57	-3.81	-0.45
2410	40.26	-3.95	-0.25
2420	39.88	-3.99	-0.36
2430	37.46	-4.26	-0.63
2440	39.48	-4.04	-0.3
2450	42.7	-3.7	-0.06
2460	40.82	-3.89	-0.56
2470	39.28	-4.06	-0.71
2480	35.68	-4.48	-1.09
2490	36.68	-4.36	-0.77
2500	37.06	-4.31	-0.52

(3) 2D/ 3D lobe pattern picture

