



3DH5	Ant1	Low	2402	Peak	2500.000	-48.05	≤-21.20	47.15	≤74	PASS
				AV	2310.000	-57.83	≤-41.20	37.37	≤54	PASS
				AV	2389.565	-57.41	≤-41.20	37.79	≤54	PASS
				AV	2390.000	-57.5	≤-41.20	37.70	≤54	PASS
				Peak	2310.000	-49.04	≤-21.20	46.16	≤74	PASS
				Peak	2386.625	-46.22	≤-21.20	48.98	≤74	PASS
		High	2480	AV	2483.500	-54.56	≤-41.20	40.64	≤54	PASS
				AV	2483.520	-54.62	≤-41.20	40.58	≤54	PASS
				AV	2500.000	-56.93	≤-41.20	38.27	≤54	PASS
				Peak	2483.500	-47.37	≤-21.20	47.83	≤74	PASS
				Peak	2484.080	-45.9	≤-21.20	49.30	≤74	PASS
				Peak	2500.000	-46.41	≤-21.20	48.79	≤74	PASS
	Low	Hop_24 02	Peak	2310.000	-48.67	≤-21.20	46.53	≤74	PASS	
			Peak	2389.145	-45.44	≤-21.20	49.76	≤74	PASS	
			Peak	2390.000	-48.23	≤-21.20	46.97	≤74	PASS	
	High	Hop_24 80	Peak	2483.500	-47.8	≤-21.20	47.40	≤74	PASS	
			Peak	2499.760	-46.37	≤-21.20	48.83	≤74	PASS	
			Peak	2500.000	-47.09	≤-21.20	48.11	≤74	PASS	

Note:

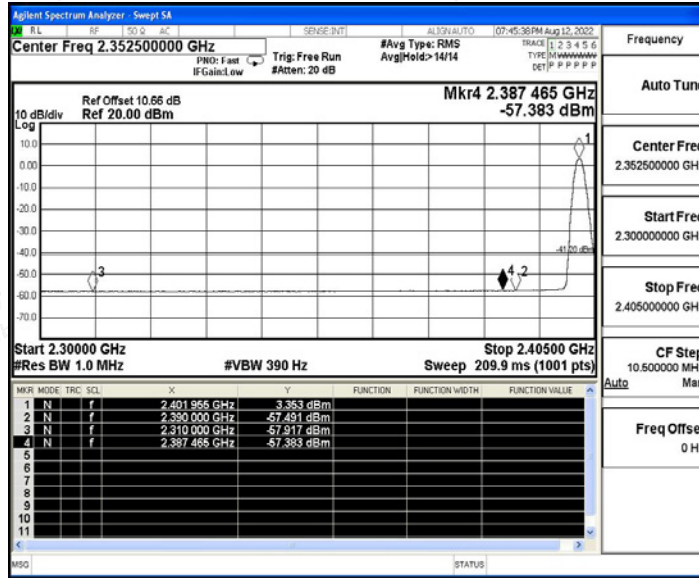
1. The Antenna Gain is compensated in the graph.
2. The limit in dBm for average detector is conversion from 54dBuV/m, according to 15.209(a). The limit in dBm for peak detector is 20dB above the limit of average detector in dBm.



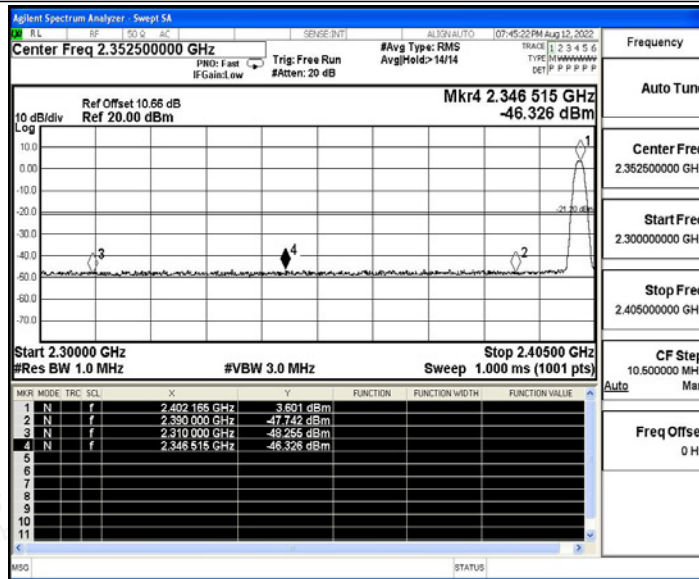


Test Graphs

DH5_Ant1_Low_2402_AV

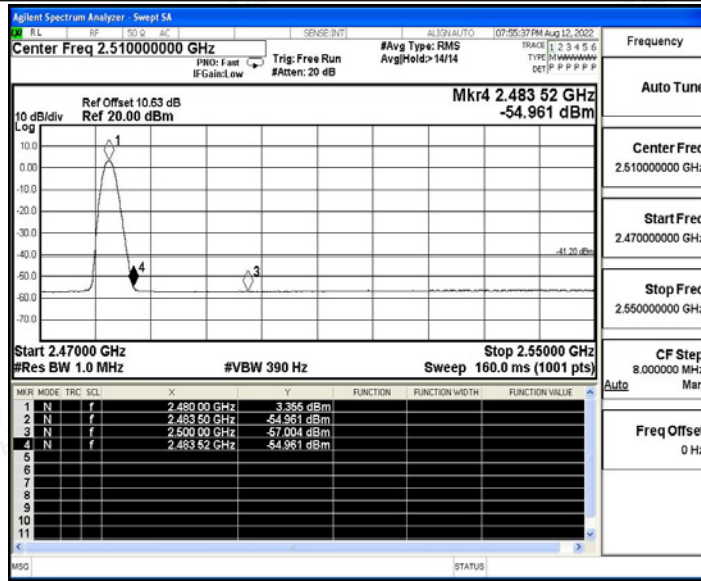


DH5_Ant1_Low_2402_Peak

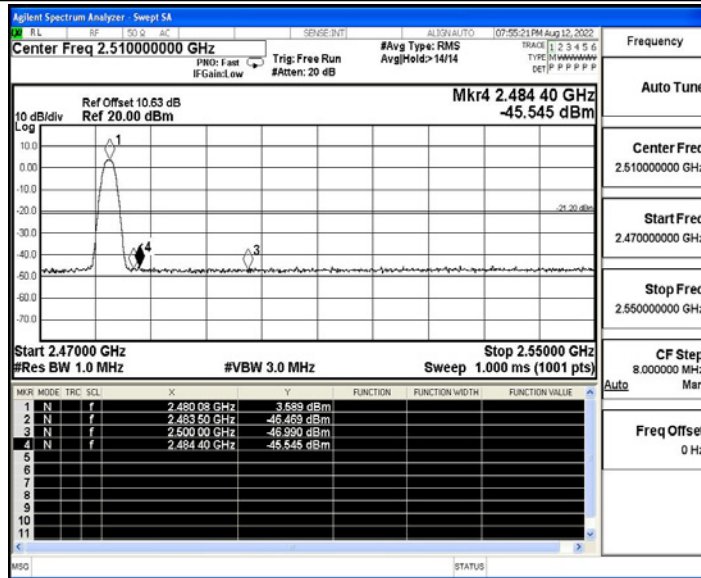


DH5_Ant1_High_2480_AV



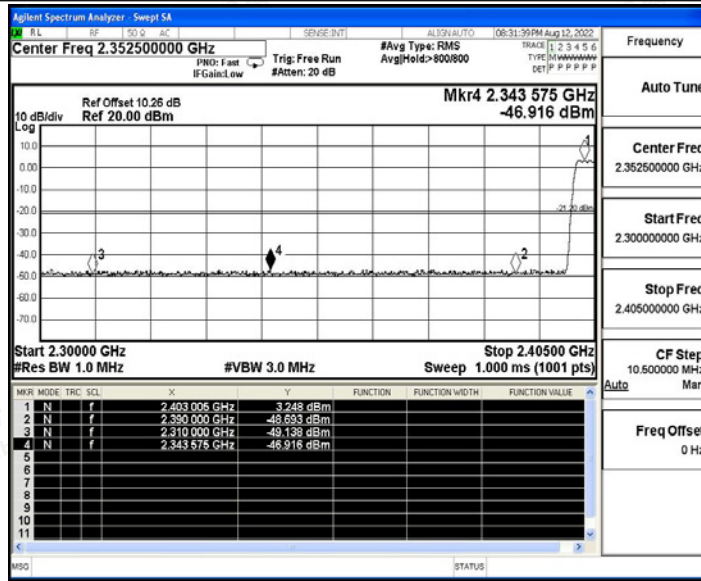


DH5_Ant1_High_2480_Peak

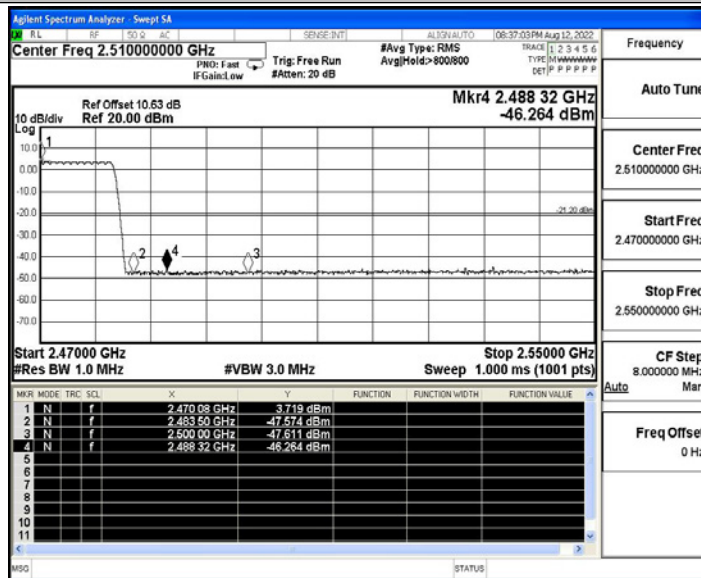


DH5_Ant1_Low_Hop_2402_Peak



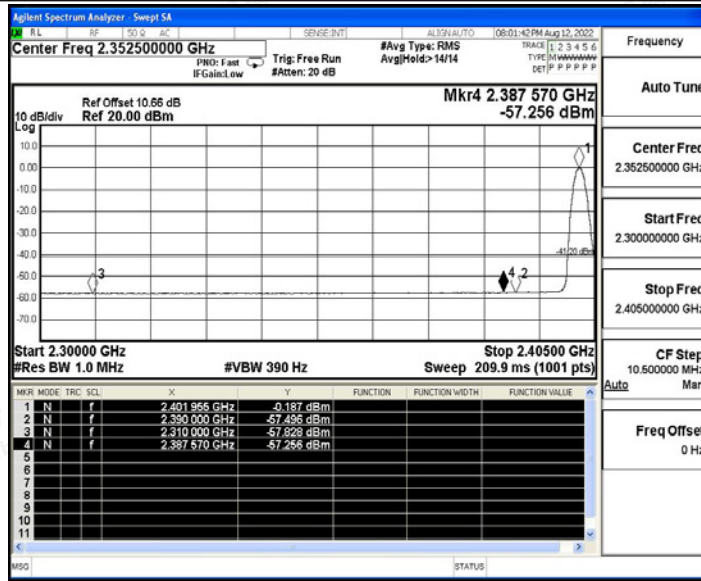


DH5_Ant1_High_Hop_2480_Peak

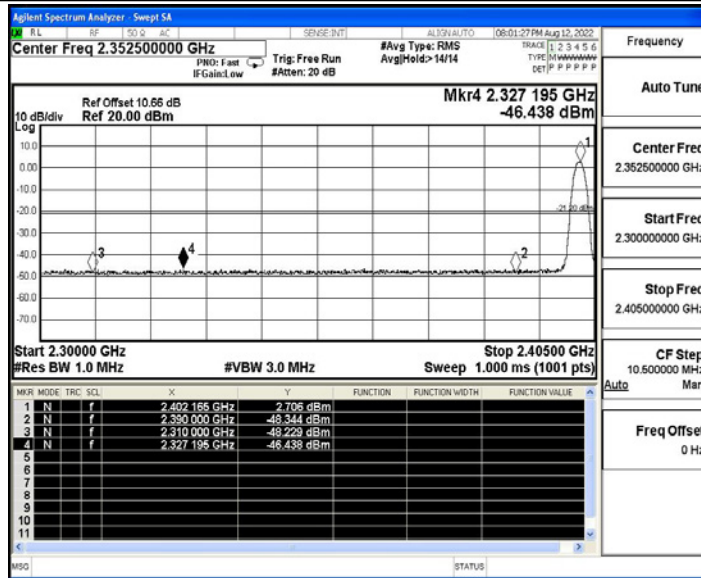


2DH5_Ant1_Low_2402_AV



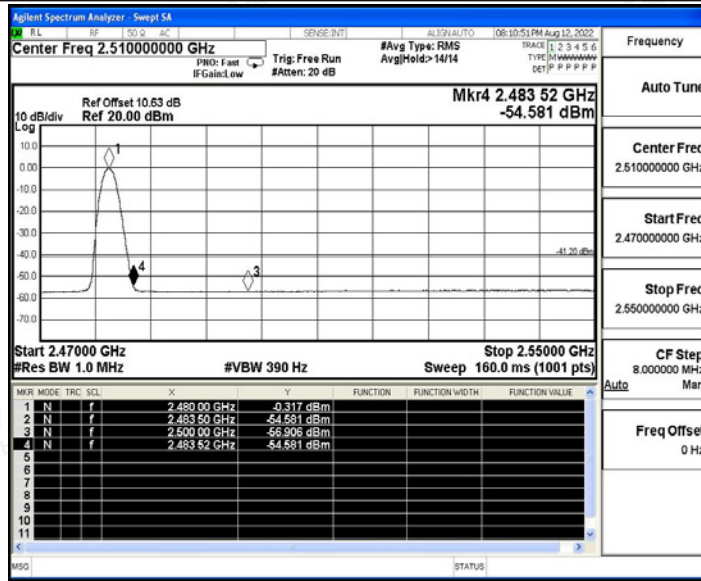


2DH5_Ant1_Low_2402_Peak

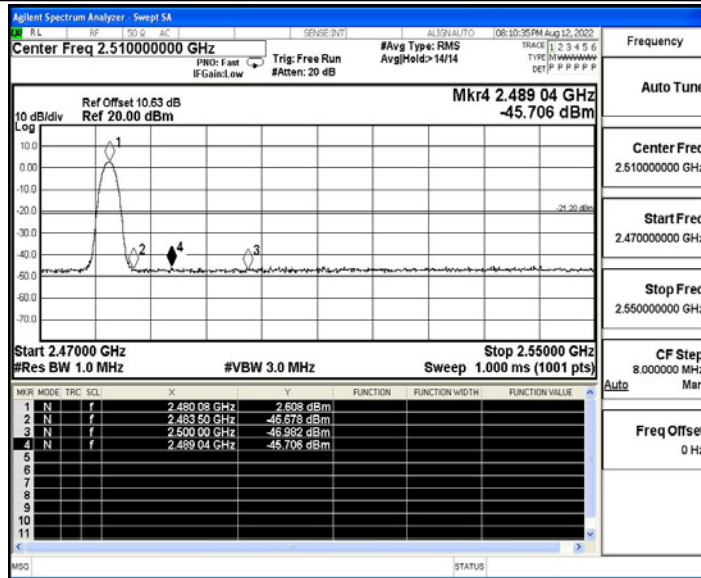


2DH5_Ant1_High_2480_AV



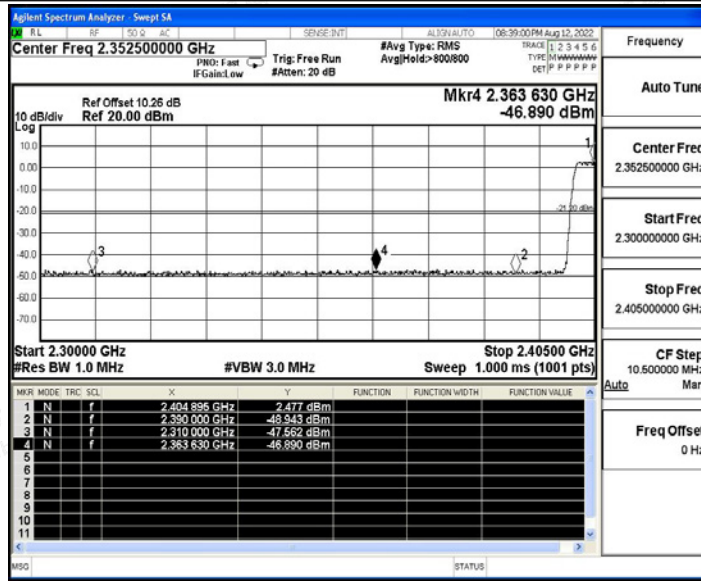


2DH5_Ant1_High_2480_Peak

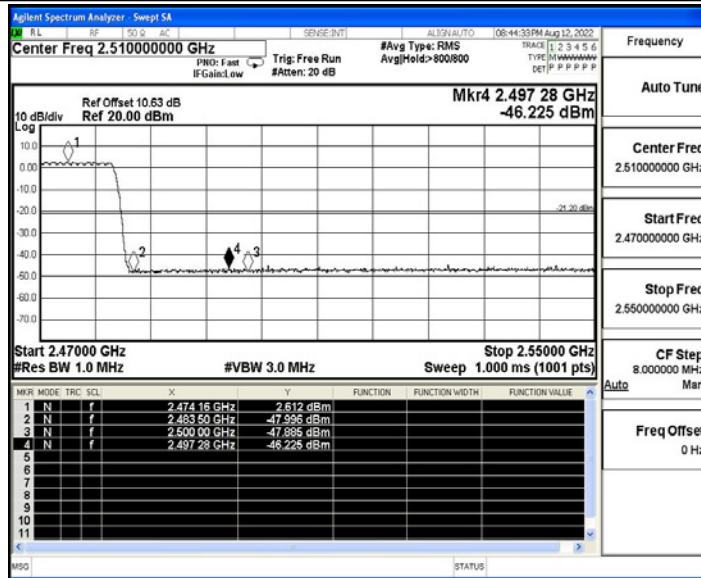


2DH5_Ant1_Low_Hop_2402_Peak



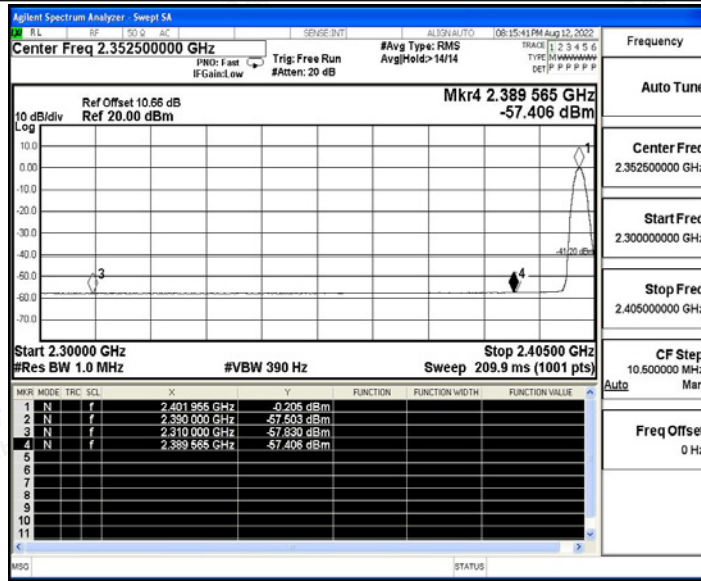


2DH5_Ant1_High_Hop_2480_Peak

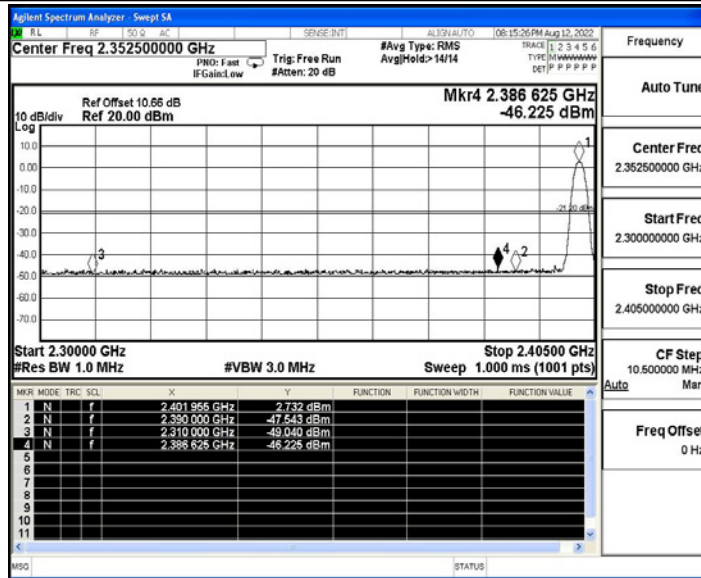


3DH5_Ant1_Low_2402_AV



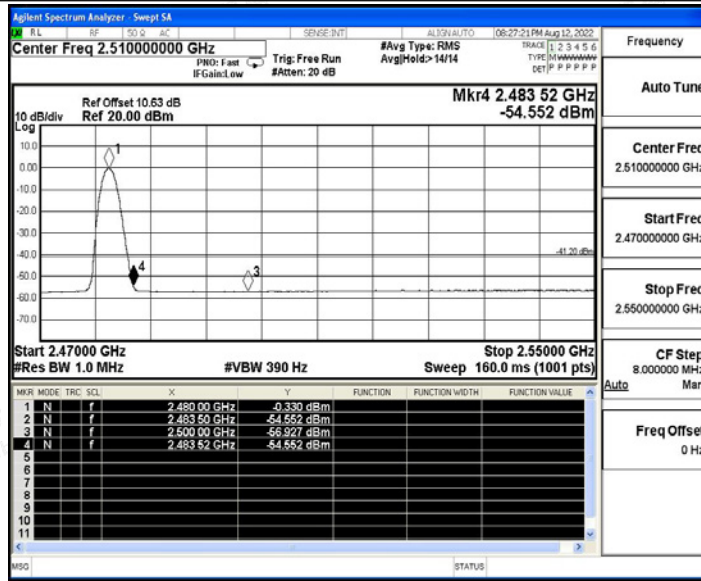


3DH5_Ant1_Low_2402_Peak

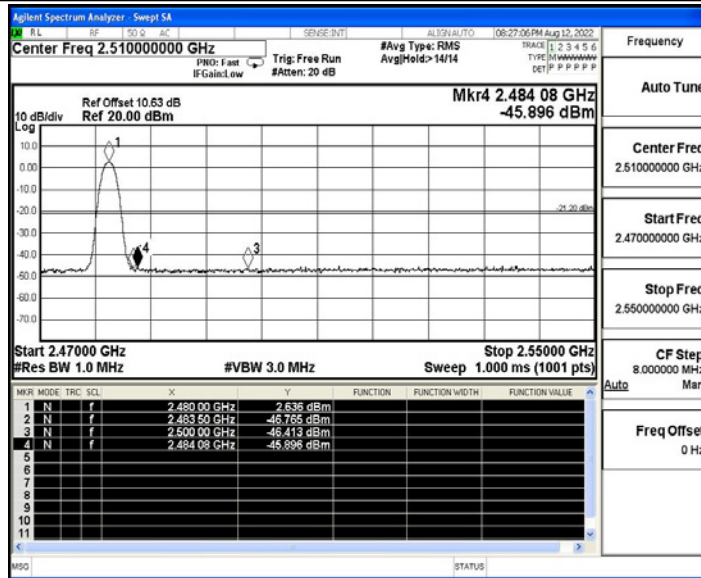


3DH5_Ant1_High_2480_AV



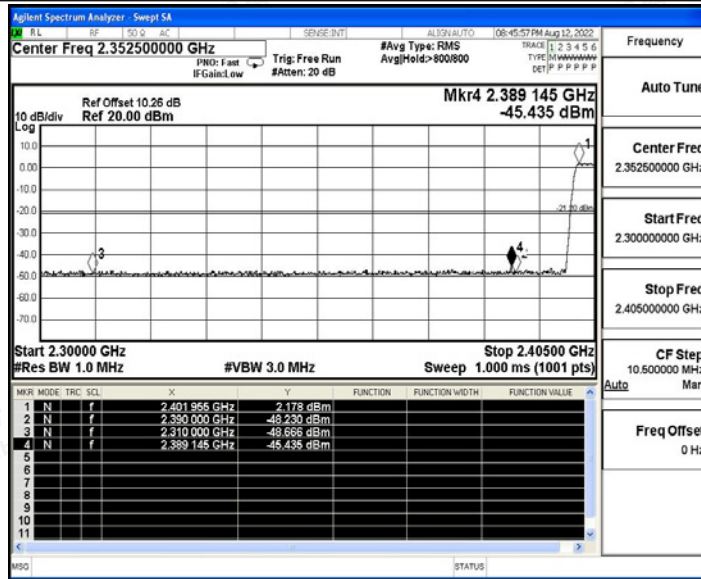


3DH5_Ant1_High_2480_Peak



3DH5_Ant1_Low_Hop_2402_Peak





3DH5_Ant1_High_Hop_2480_Peak

