

## SAR TEST REPORT

For

Collage Investments LLC.

Smart phone

Test Model: SMOOTH 5.0

Prepared for : Collage Investments LLC.  
Address : 6030 NW 99 Ave #414, DORAL, FL, United States

Prepared by : Shenzhen LCS Compliance Testing Laboratory Ltd.  
Address : 101, 201 Bldg A & 301 Bldg C, Juji Industrial Park  
Yabianxueziwei, Shajing Street, Baoan District, Shenzhen,  
518000, China

Tel : (86)755-82591330  
Fax : (86)755-82591332  
Web : [www.LCS-cert.com](http://www.LCS-cert.com)  
Mail : [webmaster@LCS-cert.com](mailto:webmaster@LCS-cert.com)

Date of receipt of test sample : November 24, 2020  
Number of tested samples : 1  
Serial number : Prototype  
Date of Test : November 24, 2020~December 31, 2020  
Date of Report : January 07, 2021

**SAR TEST REPORT****Report Reference No.....: LCS201116074AEB**

Date Of Issue.....: January 07, 2021

**Testing Laboratory Name.....: Shenzhen LCS Compliance Testing Laboratory Ltd.**Address.....: 101, 201 Bldg A & 301 Bldg C, Juji Industrial Park  
Yabianxueziwei, Shajing Street, Baoan District, Shenzhen,  
518000, ChinaTesting Location/ Procedure.....: Full application of Harmonised standards   
Partial application of Harmonised standards   
Other standard testing method **Applicant's Name.....: Collage Investments LLC.**

Address.....: 6030 NW 99 Ave #414, DORAL, FL, United States

**Test Specification:**

Standard.....: IEEE Std C95.1, 2005&amp; IEEE Std 1528™-2013&amp;FCC Part 2.1093

Test Report Form No.....: LCSEMC-1.0

TRF Originator.....: Shenzhen LCS Compliance Testing Laboratory Ltd.

Master TRF.....: Dated 2014-09

**Shenzhen LCS Compliance Testing Laboratory Ltd. All rights reserved.**

This publication may be reproduced in whole or in part for non-commercial purposes as long as the Shenzhen LCS Compliance Testing Laboratory Ltd. is acknowledged as copyright owner and source of the material. Shenzhen LCS Compliance Testing Laboratory Ltd. takes no responsibility for and will not assume liability for damages resulting from the reader's interpretation of the reproduced material due to its placement and context.

**Test Item Description.....: Smart phone**

Trade Mark.....: S SMOOTH

Model/Type Reference.....: SMOOTH 5.0

Operation Frequency.....: GSM 850/PCS1900,WCDMA Band II/V;  
LTE Band 4/7; WLAN2.4G and Bluetooth4.0

Modulation Type.....: /

Ratings.....: DC 3.8V by Rechargeable Li-ion Battery(2000mAh)  
Recharged by 5V=0.5A Adapter**Result .....: Positive****Compiled by:**

Ping Li

Ping Li/ File administrators

**Supervised by:**

Jin Wang

Jin Wang/ Technique principal

**Approved by:**

Gavin Liang

Gavin Liang/ Manager

## SAR -- TEST REPORT

<b>Test Report No. :</b> <b>LCS201116074AEB</b>	<u>January 07, 2021</u> Date of issue
---	--

Type / Model.....	: SMOOTH 5.0
EUT.....	: Smart phone
<b>Applicant.....</b>	<b>: Collage Investments LLC.</b>
Address.....	: 6030 NW 99 Ave #414, DORAL, FL, United States
Telephone.....	: /
Fax.....	: /
<b>Manufacturer.....</b>	<b>: Collage Investments LLC.</b>
Address.....	: 6030 NW 99 Ave #414, DORAL, FL, United States
Telephone.....	: /
Fax.....	: /
<b>Factory.....</b>	<b>: /</b>
Address.....	: /
Telephone.....	: /
Fax.....	: /

<b>Test Result</b>	<b>Positive</b>
--------------------	-----------------

The test report merely corresponds to the test sample.  
 It is not permitted to copy extracts of these test result without the written permission of the test laboratory.

### Revision History

Revision	Issue Date	Revisions	Revised By
000	January 07, 2021	Initial Issue	Gavin Liang

## TABLE OF CONTENTS

<b>1. TEST STANDARDS AND TEST DESCRIPTION.....</b>	<b>6</b>
1.1. TEST STANDARDS.....	6
1.2. TEST DESCRIPTION.....	6
1.3. GENERAL REMARKS.....	6
1.4. PRODUCT DESCRIPTION.....	6
1.5. STATEMENT OF COMPLIANCE.....	8
<b>2. TEST ENVIRONMENT.....</b>	<b>9</b>
2.1. TEST FACILITY.....	9
2.2. ENVIRONMENTAL CONDITIONS.....	9
2.3. SAR LIMITS.....	9
2.4. EQUIPMENTS USED DURING THE TEST.....	10
<b>3. SAR MEASUREMENTS SYSTEM CONFIGURATION.....</b>	<b>11</b>
3.1. SAR MEASUREMENT SET-UP.....	11
3.2. OPENSAR E-FIELD PROBE SYSTEM.....	12
3.3. PHANTOMS.....	13
3.4. DEVICE HOLDER.....	13
3.5. SCANNING PROCEDURE.....	14
3.6. DATA STORAGE AND EVALUATION.....	15
3.7. POSITION OF THE WIRELESS DEVICE IN RELATION TO THE PHANTOM.....	16
3.8. TISSUE DIELECTRIC PARAMETERS FOR HEAD AND BODY PHANTOMS.....	18
3.9. TISSUE EQUIVALENT LIQUID PROPERTIES.....	18
3.10. SYSTEM CHECK.....	19
3.11. SAR MEASUREMENT PROCEDURE.....	22
3.12. POWER REDUCTION.....	27
3.13. POWER DRIFT.....	27
<b>4. TEST CONDITIONS AND RESULTS.....</b>	<b>28</b>
4.1 CONDUCTED POWER RESULTS.....	28
4.2 TRANSMIT ANTENNAS AND SAR MEASUREMENT POSITION.....	38
4.3 SAR MEASUREMENT RESULTS.....	39
4.4 SIMULTANEOUS TX SAR CONSIDERATIONS.....	43
4.5 SAR MEASUREMENT VARIABILITY.....	45
4.6 GENERAL DESCRIPTION OF TEST PROCEDURES.....	46
4.7 MEASUREMENT UNCERTAINTY (450MHZ-6GHZ).....	47
4.8 SYSTEM CHECK RESULTS.....	48
4.9 SAR TEST GRAPH RESULTS.....	53
<b>5. ALIBRATION CERTIFICATES.....</b>	<b>67</b>
5.1 PROBE-EPGO324 CALIBRATION CERTIFICATE.....	67
5.2 SID835DIPOLE CALIBRATION CERITICATE.....	77
5.3 SID1800 DIPOLE CALIBRATION CERTIFICATE.....	88
5.4 SID1900 DIPOLE CALIBRATION CERTIFICATE.....	99
5.5 SID2450 DIPOLE CALIBRATION CERTIFICATE.....	110
5.6 SID2600 DIPOLE CALIBRATION CERITICATE.....	121
<b>6. SAR SYSTEM PHOTOGRAPHS.....</b>	<b>132</b>
<b>7. SETUP PHOTOGRAPHS.....</b>	<b>133</b>
<b>8. EUT PHOTOGRAPHS.....</b>	<b>138</b>

# 1. TEST STANDARDS AND TEST DESCRIPTION

## 1.1. Test Standards

[IEEE Std C95.1, 2005](#): IEEE Standard for Safety Levels with Respect to Human Exposure to Radio Frequency Electromagnetic Fields, 3 KHz to 300 GHz. It specifies the maximum exposure limit of 1.6 W/kg as averaged over any 1 gram of tissue for portable devices being used within 20 cm of the user in the uncontrolled environment.

[IEEE Std 1528™-2013](#): IEEE Recommended Practice for Determining the Peak Spatial-Average Specific Absorption Rate (SAR) in the Human Head from Wireless Communications Devices: Measurement Techniques.

[FCC Part 2.1093](#): Radiofrequency Radiation Exposure Evaluation: Portable Devices

[KDB447498 D01 General RF Exposure Guidance](#) : Mobile and Portable Device RF Exposure Procedures and Equipment Authorization Policies

[KDB648474 D04](#): Handset SAR v01r03: SAR Evaluation Considerations for Wireless Handsets

[KDB865664 D01 SAR Measurement 100 MHz to 6 GHz](#) : SAR Measurement Requirements for 100 MHz to 6 GHz

[KDB865664 D02 RF Exposure Reporting](#): RF Exposure Compliance Reporting and Documentation Considerations

[KDB248227 D01 802.11 Wi-Fi SAR](#): SAR Guidance For IEEE 802.11 (Wi-Fi) Transmitters

[KDB941225 D01 3G SAR Procedures](#): 3G SAR Measurement Procedures

[KDB 941225 D06 Hotspot Mode](#): SAR Evaluation Procedures For Portable Devices With Wireless Router Capabilities

[KDB 941225 D05 SAR for LTE Devices](#): SAR Evaluation Considerations For LTE Devices

## 1.2. Test Description

The EUT battery must be fully charged and checked periodically during the test to ascertain uniform power . And Test device is identical prototype.

## 1.3. General Remarks

Date of receipt of test sample	:	November 24, 2020
Testing commenced on	:	November 24, 2020
Testing concluded on	:	December 31, 2020

## 1.4. Product Description

The Collage Investments LLC.. Model: SMOOTH 5.0 or the "EUT" as referred to in this report; more general information as follows, for more details, refer to the user's manual of the EUT.

General Description	
Product Name:	Smart phone
Test Model:	SMOOTH 5.0
List Model No.:	/
Modulation Type:	GMSK for GSM; QPSK for UMTS; QPSK,16QAM for LTE
Hardware Version:	V1.0
Software Version:	V1.0
Power supply:	DC 3.8V by Rechargeable Li-ion Battery(2000mAh) Recharged by 5V=0.5A Adapter
Hotspot:	Supported, power not reduced when Hotspot open
VoIP	Supported
<p><i>The EUT is GSM,WCDMA,LTE,WLAN. the Smart phone is intended for speech and Multimedia Message Service (MMS) transmission. It is equipped with GPRS class 12 for GSM850,PCS1900,WCDMA Band II,Band V,LTE Band4 and Band7, Bluetooth,WiFi2.4G mobile phone functions. For more information see the following datasheet</i></p>	

Technical Characteristics	
GSM	
Support Band:	GSM850/PCS1900
Frequency:	GSM850:824.2~848.8MHz GSM1900:1850.2~1909.8MHz
Power Class:	GSM850:Power Class12

	PCS1900:Power Class12
Modulation Type:	GMSK for GSM/GPRS; 8PSK for EGPRS
DTM Mode:	Not Supported
Antenna Description:	PIFA Antenna; 0.9dBi (max.) For GSM 850; 0.9dBi (max.) For PCS 1900.
<b>UMTS</b>	
Support Networks:	WCDMA RMC12.2K,HSDPA,HSUPA
Operation Band:	UMTS FDD Band V/II
Release Version:	R99
Modulation Type:	WCDMA: QPSK; HSDPA/HSUPA: QPSK
DC-HSUPA Release Version:	Not Supported
Antenna Description:	PIFA Antenna; 1.0dBi (max.) For WCDMA Band II; 1.0dBi (max.) For WCDMA Band V.
<b>LTE</b>	
Support Band:	LTE FDD band 3,4,7,28
Power Class:	Class 3
LTE Release Version:	R10
Modulation Type:	QPSK,16QAM for LTE
VoLTE	Not Support
Antenna Description:	PIFA Antenna; 1.2dBi (max.) For E-UTRA Band 4; 0.9dBi (max.) For E-UTRA Band 7;
<b>Bluetooth</b>	
Frequency Range:	2402MHz-2480MHz
Bluetooth Version:	V4.0
Bluetooth Channel Number:	79 channels for Bluetooth V4.0 (BT Classics) 40 channels for Bluetooth V4.0 (BT LE)
Bluetooth Channel Spacing:	1MHz for Bluetooth V4.0 (BT Classics) 2MHz for Bluetooth V4.0 (BT LE)
Bluetooth Modulation Type:	GFSK, $\pi/4$ -DQPSK, 8-DPSK for Bluetooth V4.0(BDR/EDR) GFSK for Bluetooth V4.0(BT LE)
Antenna Description:	PIFA Antenna, 0.9dBi(Max.)
<b>2.4G WLAN</b>	
Frequency Range:	2412 – 2462 MHz
Channel Number:	11 Channel for 20MHz bandwidth(2412~2462MHz)
Modulation Type	802.11b: DSSS; 802.11g/n: OFDM
Channel Spacing:	5MHz
Antenna Description:	PIFA Antenna, 1.1dBi(Max.)
GPS function:	Support and only RX
FM function:	Support and only RX

## 1.5. Statement of Compliance

The maximum of results of SAR found during testing for **SMOOTH 5.0** are follows:

<Highest Reported standalone SAR Summary>

Classment Class	Frequency Band	Head (Report SAR <sub>1-g</sub> (W/kg))	Hotspot (Report SAR <sub>1-g</sub> (W/kg))	Body-worn (Report SAR <sub>1-g</sub> (W/kg))
			(Separation Distance 10mm)	
PCE	GSM 850	0.765	0.399	0.399
	GSM1900	0.636	0.353	0.353
	WCDMA Band V	0.637	0.304	0.304
	WCDMA Band II	0.776	0.707	0.707
	LTE Band 4	0.793	<b>0.762</b>	<b>0.762</b>
	LTE Band 7	<b>0.794</b>	0.643	0.643
DTS	WIFI2.4G	0.177	0.065	0.065

This device is in compliance with Specific Absorption Rate (SAR) for general population/uncontrolled exposure limits (1.6 W/kg) specified in FCC 47 CFR part 2 (2.1093) and ANSI/IEEE C95.1-2005, and had been tested in accordance with the measurement methods and procedures specified in IEEE 1528-2013.

<Highest Reported simultaneous SAR Summary>

Exposure Position	Classment Class	Head (Report SAR <sub>1-g</sub> (W/kg))	Highest Reported Simultaneous Transmission SAR <sub>1-g</sub> (W/kg)
Head	PCE	0.798	<b>0.971</b>
	DTS	0.170	



## 2. TEST ENVIRONMENT

### 2.1. Test Facility

The test facility is recognized, certified, or accredited by the following organizations:

Site Description  
 EMC Lab. : NVLAP Accreditation Code is 600167-0.  
 FCC Designation Number is CN5024.  
 CAB identifier is CN0071.  
 CNAS Registration Number is L4595.

### 2.2. Environmental conditions

During the measurement the environmental conditions were within the listed ranges:

Temperature:	18-25 ° C
Humidity:	40-65 %
Atmospheric pressure:	950-1050mbar

### 2.3. SAR Limits

EXPOSURE LIMITS	FCC Limit (1g Tissue)	
	SAR (W/kg)	
	(General Population / Uncontrolled Exposure Environment)	(Occupational / Controlled Exposure Environment)
Spatial Average(averaged over the whole body)	0.08	0.4
Spatial Peak(averaged over any 1 g of tissue)	1.6	8.0
Spatial Peak(hands/wrists/feet/anklesaveraged over 10 g)	4.0	20.0

Population/Uncontrolled Environments are defined as locations where there is the exposure of individual who have no knowledge or control of their exposure.

Occupational/Controlled Environments are defined as locations where there is exposure that may be incurred by people who are aware of the potential for exposure (i.e. as a result of employment or occupation).

## 2.4. Equipments Used during the Test

Item	Equipment	Manufacturer	Model No.	Serial No.	Cal Date	Due Date
1	PC	Lenovo	G5005	MY42081102	N/A	N/A
2	SAR Measurement system	SATIMO	4014_01	SAR_4014_01	N/A	N/A
3	Signal Generator	Agilent	E4438C	MY49072627	2020-06-11	2021-06-10
4	Multimeter	Keithley	MiltiMeter 2000	4059164	2020-11-15	2021-11-14
5	S-parameter Network Analyzer	Agilent	8753ES	US38432944	2020-11-15	2021-11-14
6	Wideband Radio Communication Tester	R&S	CMW500	103818-1	2019-11-22	2020-11-21
7	E-Field PROBE	MVG	SSE2	SN 31/17 EPGO324	2020-10-07	2021-10-06
8	DIPOLE 835	SATIMO	SID 835	SN 07/14 DIP 0G835-303	2018-10-01	2021-09-30
9	DIPOLE 1800	SATIMO	SID 1800	SN 07/14 DIP 1G800-301	2018-10-01	2021-09-30
10	DIPOLE 1900	SATIMO	SID 1900	SN 38/18 DIP 1G900-466	2018-09-24	2021-09-23
11	DIPOLE 2450	SATIMO	SID 2450	SN 07/14 DIP 2G450-306	2018-10-01	2021-09-30
12	DIPOLE 2600	SATIMO	SID 2600	SN 38/18 DIP 2G600-468	2018-09-24	2021-09-23
13	COMOSAR OPEN Coaxial Probe	SATIMO	OCPG 68	SN 40/14 OCPG68	2020-11-15	2021-11-14
14	SAR Locator	SATIMO	VPS51	SN 40/14 VPS51	2020-11-15	2021-11-14
15	Communication Antenna	SATIMO	ANTA57	SN 39/14 ANTA57	2020-11-15	2021-11-14
16	FEATURE PHONE POSITIONING DEVICE	SATIMO	MSH98	SN 40/14 MSH98	N/A	N/A
17	DUMMY PROBE	SATIMO	DP60	SN 03/14 DP60	N/A	N/A
18	SAM PHANTOM	SATIMO	SAM117	SN 40/14 SAM117	N/A	N/A
19	Liquid measurement Kit	HP	85033D	3423A03482	2020-11-15	2021-11-14
20	Power meter	Agilent	E4419B	MY45104493	2020-06-11	2021-06-10
21	Power meter	Agilent	E4419B	MY45100308	2019-11-22	2020-11-21
22	Power sensor	Agilent	E9301H	MY41495616	2019-11-22	2020-11-21
23	Power sensor	Agilent	E9301H	MY41495234	2020-06-11	2021-06-10
24	Directional Coupler	MCLI/USA	4426-20	03746	2020-06-11	2021-06-10

### Note:

- 1) Per KDB865664D01 requirements for dipole calibration, the test laboratory has adopted three year extended calibration interval. Each measured dipole is expected to evaluate with following criteria at least on annual interval.
  - a) There is no physical damage on the dipole;
  - b) System check with specific dipole is within 10% of calibrated values;
  - c) The most recent return-loss results, measured at least annually, deviates by no more than 20% from the previous measurement;
  - d) The most recent measurement of the real or imaginary parts of the impedance, measured at least annually is within 5Ω from the previous measurement.
- 2) Network analyzer probe calibration against air, distilled water and a shorting block performed before measuring liquid parameters.

### 3.SAR MEASUREMENTS SYSTEM CONFIGURATION

#### 3.1. SAR Measurement Set-up

The OPENSAR system for performing compliance tests consist of the following items:

A standard high precision 6-axis robot (KUKA) with controller and software.

KUKA Control Panel (KCP)

A dosimetric probe, i.e., an isotropic E-field probe optimized and calibrated for usage in tissue simulating liquid. The probe is equipped with a Video Positioning System(VPS).

The stress sensor is composed with mechanical and electronic when the electronic part detects a change on the electro-mechanical switch,It sends an "Emergency signal" to the robot controller that to stop robot's moves

A computer operating Windows XP.

OPENSAR software

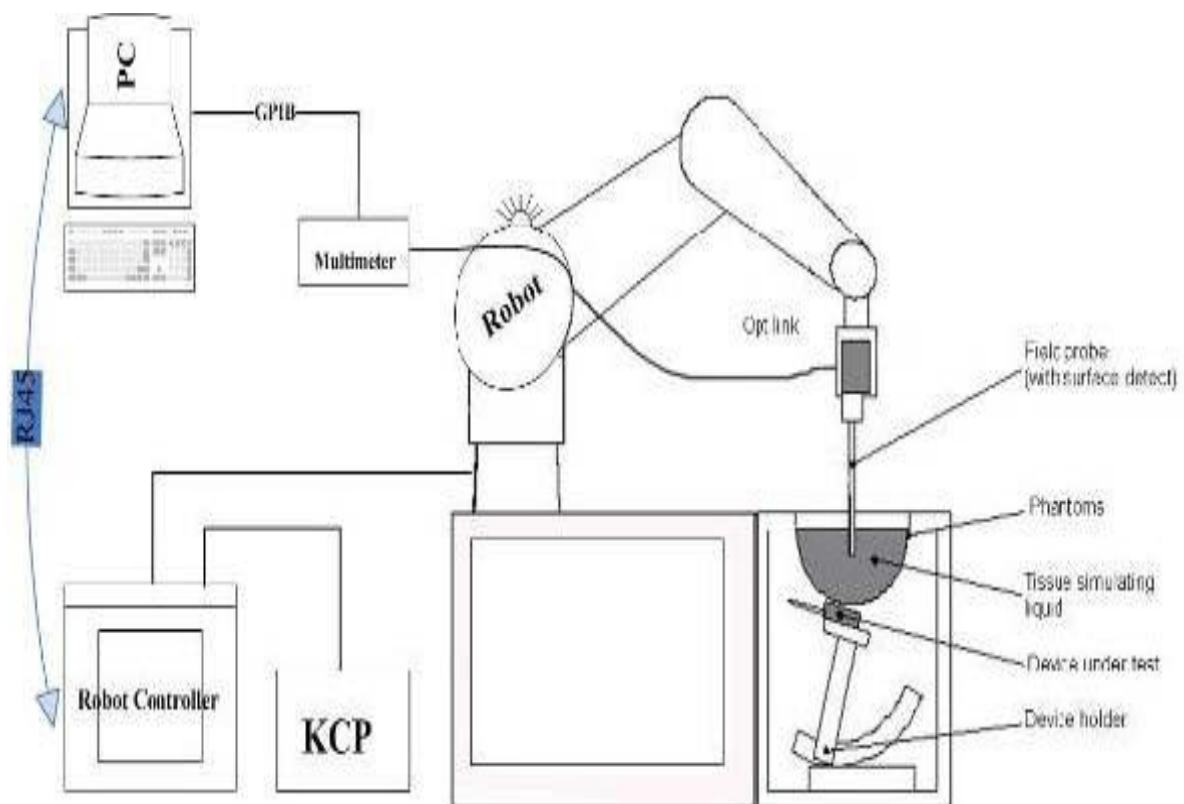
Remote control with teaches pendant and additional circuitry for robot safety such as warning lamps, etc.

The SAM phantom enabling testing left-hand right-hand and body usage.

The Position device for handheld EUT

Tissue simulating liquid mixed according to the given recipes .

System validation dipoles to validate the proper functioning of the system.



### 3.2. OPENSAR E-field Probe System

The SAR measurements were conducted with the dosimetric probe EPGO324 (manufactured by SATIMO), designed in the classical triangular configuration and optimized for dosimetric evaluation.

#### Probe Specification

Construction Symmetrical design with triangular core

Interleaved sensors

Built-in shielding against static charges

PEEK enclosure material (resistant to organic solvents, e.g., DGBE)

Calibration ISO/IEC 17025 calibration service available.

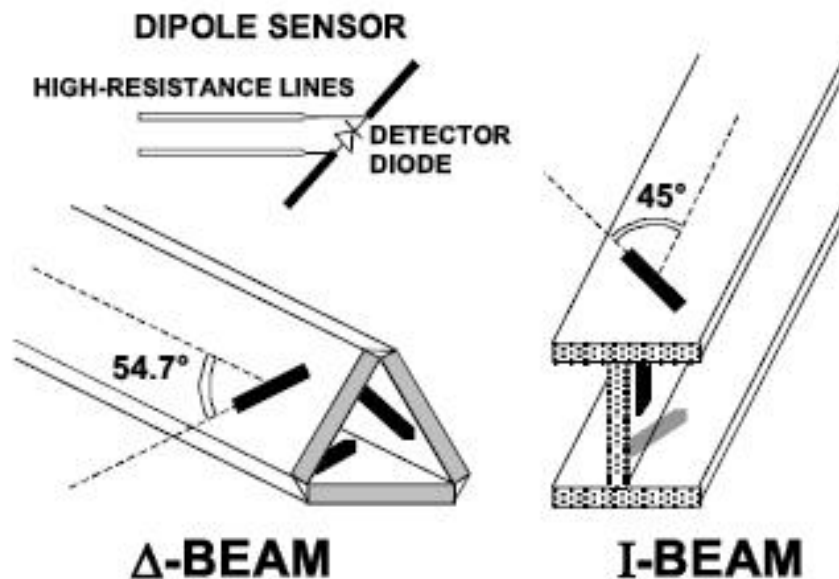
Frequency	450 MHz to 6 GHz; Linearity: 0.25dB(450 MHz to 6 GHz)
Directivity	0.25 dB in HSL (rotation around probe axis) 0.5 dB in tissue material (rotation normal to probe axis)
Dynamic Range	0.01W/kg to > 100 W/kg; Linearity: 0.25 dB
Dimensions	Overall length: 330 mm (Tip: 16mm) Tip diameter: 5 mm (Body: 8 mm) Distance from probe tip to sensor centers: 2.5 mm
Application	General dosimetry up to 6 GHz Dosimetry in strong gradient fields Compliance tests of Mobile Phones



#### Isotropic E-Field Probe

The isotropic E-Field probe has been fully calibrated and assessed for isotropicity, and boundary effect within a controlled environment. Depending on the frequency for which the probe is calibrated the method utilized for calibration will change.

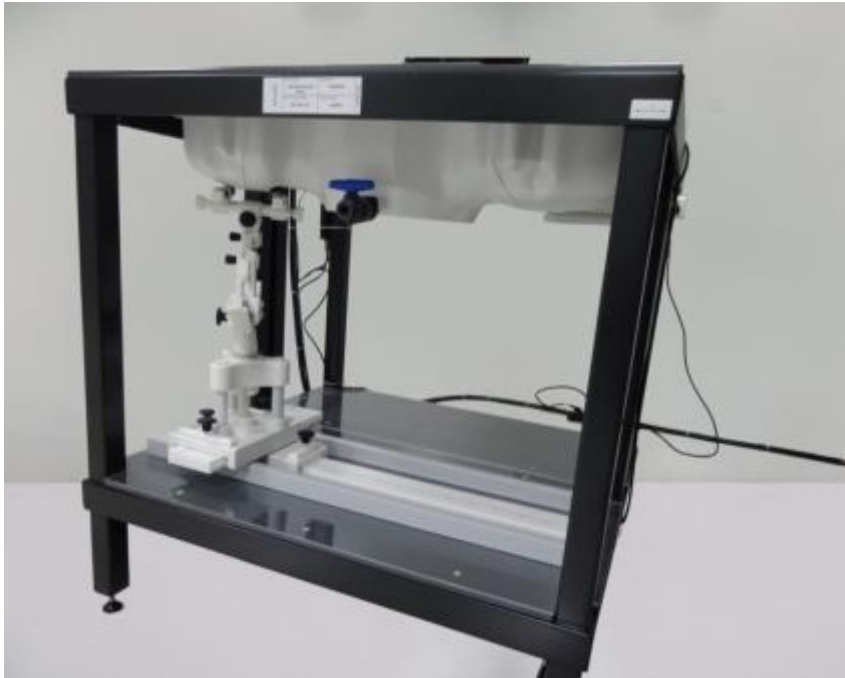
The E-Field probe utilizes a triangular sensor arrangement as detailed in the diagram below:



### 3.3. Phantoms

The SAM Phantom SAM117 is constructed of a fiberglass shell integrated in a wooden table. The shape of the shell is in compliance with the specification set in IEEE P1528 and CENELEC EN62209-1, EN62209-2:2010. The phantom enables the dosimetric evaluation of left and right hand phone usage as well as body mounted usage at the flat phantom region. A cover prevents the evaporation of the liquid. Reference markings on the Phantom allow the complete setup of all predefined phantom positions and measurement grids by manually teaching three points in the robot.

System checking was performed using the flat section, whilst Head SAR tests used the left and right head profile sections. Body SAR testing also used the flat section between the head profiles.



SAM Twin Phantom

### 3.4. Device Holder

In combination with the Generic Twin Phantom SAM117, the Mounting Device enables the rotation of the mounted transmitter in spherical coordinates whereby the rotation points is the ear opening. The devices can be easily, accurately, and repeatedly positioned according to the FCC and CENELEC specifications. The device holder can be locked at different phantom locations (left head, right head, flat phantom).



Device holder supplied by SATIMO

### 3.5. Scanning Procedure

The procedure for assessing the peak spatial-average SAR value consists of the following steps

#### Power Reference Measurement

The reference and drift jobs are useful jobs for monitoring the power drift of the device under test in the batch process. Both jobs measure the field at a specified reference position, at a selectable distance from the phantom surface. The reference position can be either the selected section's grid reference point or a user point in this section. The reference job projects the selected point onto the phantom surface, orients the probe perpendicularly to the surface, and approaches the surface using the selected detection method.

#### Area Scan

The Area Scan is used as a fast scan in two dimensions to find the area of high field values before running a detailed measurement around the hot spot. Before starting the area scan a grid spacing of 15 mm x 15 mm is set. During the scan the distance of the probe to the phantom remains unchanged. After finishing area scan, the field maxima within a range of 2 dB will be ascertained.

	≤ 3 GHz	> 3 GHz
Maximum distance from closest measurement point (geometric center of probe sensors) to phantom surface	5 mm ± 1 mm	$\frac{1}{2} \cdot \delta \cdot \ln(2)$ mm ± 0.5 mm
Maximum probe angle from probe axis to phantom surface normal at the measurement location	30° ± 1°	20° ± 1°
Maximum area scan spatial resolution: $\Delta x_{Area}$ , $\Delta y_{Area}$	≤ 2 GHz: ≤ 15 mm 2 – 3 GHz: ≤ 12 mm	3 – 4 GHz: ≤ 12 mm 4 – 6 GHz: ≤ 10 mm
	When the x or y dimension of the test device, in the measurement plane orientation, is smaller than the above, the measurement resolution must be ≤ the corresponding x or y dimension of the test device with at least one measurement point on the test device.	

#### Zoom Scan

Zoom Scans are used to estimate the peak spatial SAR values within a cubic averaging volume containing 1 g and 10 g of simulated tissue. The default Zoom Scan is done by 7x7x7 points within a cube whose base is centered around the maxima found in the preceding area scan.

Maximum zoom scan spatial resolution: $\Delta x_{Zoom}$ , $\Delta y_{Zoom}$		≤ 2 GHz: ≤ 8 mm 2 – 3 GHz: ≤ 5 mm*	3 – 4 GHz: ≤ 5 mm* 4 – 6 GHz: ≤ 4 mm*
Maximum zoom scan spatial resolution, normal to phantom surface	uniform grid: $\Delta z_{Zoom}(n)$	≤ 5 mm	3 – 4 GHz: ≤ 4 mm 4 – 5 GHz: ≤ 3 mm 5 – 6 GHz: ≤ 2 mm
	graded grid	$\Delta z_{Zoom}(1)$ : between 1 <sup>st</sup> two points closest to phantom surface	≤ 4 mm 3 – 4 GHz: ≤ 3 mm 4 – 5 GHz: ≤ 2.5 mm 5 – 6 GHz: ≤ 2 mm
		$\Delta z_{Zoom}(n>1)$ : between subsequent points	≤ 1.5 · $\Delta z_{Zoom}(n-1)$ mm
Minimum zoom scan volume	x, y, z	≥ 30 mm	3 – 4 GHz: ≥ 28 mm 4 – 5 GHz: ≥ 25 mm 5 – 6 GHz: ≥ 22 mm
Note: $\delta$ is the penetration depth of a plane-wave at normal incidence to the tissue medium; see IEEE Std 1528-2013 for details.			
* When zoom scan is required and the <u>reported</u> SAR from the <u>area scan based 1-g SAR estimation</u> procedures of KDB Publication 447498 is ≤ 1.4 W/kg, ≤ 8 mm, ≤ 7 mm and ≤ 5 mm zoom scan resolution may be applied, respectively, for 2 GHz to 3 GHz, 3 GHz to 4 GHz and 4 GHz to 6 GHz.			

#### Power Drift measurement

The drift job measures the field at the same location as the most recent reference job within the same procedure, and with the same settings. The drift measurement gives the field difference in dB from the reading conducted within the last reference measurement. Several drift measurements are possible for one reference measurement. This allows a user to monitor the power drift of the device under test within a batch process. In the properties of the Drift job, the user can specify a limit for the drift and have OPENSAR software stop the measurements if this limit is exceeded.

### 3.6. Data Storage and Evaluation

#### Data Storage

The OPENSAR software stores the acquired data from the data acquisition electronics as raw data (in microvolt readings from the probe sensors), together with all necessary software parameters for the data evaluation (probe calibration data, liquid parameters and device frequency and modulation data) in measurement files. The software evaluates the desired unit and format for output each time the data is visualized or exported. This allows verification of the complete software setup even after the measurement and allows correction of incorrect parameter settings. For example, if a measurement has been performed with a wrong crest factor parameter in the device setup, the parameter can be corrected afterwards and the data can be re-evaluated.

The measured data can be visualized or exported in different units or formats, depending on the selected probe type ([V/m], [A/m], [°C], [mW/g], [mW/cm<sup>2</sup>], [dBrel], etc.). Some of these units are not available in certain situations or show meaningless results, e.g., a SAR output in a lossless media will always be zero. Raw data can also be exported to perform the evaluation with other software packages.

#### Data Evaluation

The OPENSAR software automatically executes the following procedures to calculate the field units from the microvolt readings at the probe connector. The parameters used in the evaluation are stored in the configuration modules of the software:

Probe parameters:	- Sensitivity	Normi, ai0, ai1, ai2
	- Conversion factor	ConvFi
	- Diode compression point	Dcpi
Device parameters:	- Frequency	f
	- Crest factor	cf
Media parameters:	- Conductivity	σ
	- Density	ρ

These parameters must be set correctly in the software. They can be found in the component documents or they can be imported into the software from the configuration files issued for the OPENSAR components. In the direct measuring mode of the multimeter option, the parameters of the actual system setup are used. In the scan visualization and export modes, the parameters stored in the corresponding document files are used.

The first step of the evaluation is a linearization of the filtered input signal to account for the compression characteristics of the detector diode. The compensation depends on the input signal, the diode type and the DC-transmission factor from the diode to the evaluation electronics. If the exciting field is pulsed, the crest factor of the signal must be known to correctly compensate for peak power. The formula for each channel can be given as:

$$V_i = U_i + U_i^2 \cdot \frac{cf}{dcp_i}$$

With  $V_i$  = compensated signal of channel  $i$  ( $i = x, y, z$ )  
 $U_i$  = input signal of channel  $i$  ( $i = x, y, z$ )  
 $cf$  = crest factor of exciting field  
 $dcp_i$  = diode compression point

From the compensated input signals the primary field data for each channel can be evaluated:

$$E - \text{fieldprobes} : E_i = \sqrt{\frac{V_i}{Norm_i \cdot ConvF}}$$

$$H - \text{fieldprobes} : H_i = \sqrt{V_i} \cdot \frac{a_{i0} + a_{i1}f + a_{i2}f^2}{f}$$

With  $V_i$  = compensated signal of channel  $i$  ( $i = x, y, z$ )  
 $Norm_i$  = sensor sensitivity of channel  $i$  ( $i = x, y, z$ )  
 [mV/(V/m)<sup>2</sup>] for E-field Probes  
 $ConvF$  = sensitivity enhancement in solution  
 $a_{ij}$  = sensor sensitivity factors for H-field probes

- f = carrier frequency [GHz]
- E<sub>i</sub> = electric field strength of channel i in V/m
- H<sub>i</sub> = magnetic field strength of channel i in A/m

The RSS value of the field components gives the total field strength (Hermitian magnitude):

$$E_{tot} = \sqrt{E_x^2 + E_y^2 + E_z^2}$$

The primary field data are used to calculate the derived field units.

$$SAR = E_{tot}^2 \cdot \frac{\sigma}{\rho \cdot 1'000}$$

- with SAR = local specific absorption rate in mW/g
- E<sub>tot</sub> = total field strength in V/m
- σ = conductivity in [mho/m] or [Siemens/m]
- ρ = equivalent tissue density in g/cm<sup>3</sup>

Note that the density is normally set to 1 (or 1.06), to account for actual brain density rather than the density of the simulation liquid.

### 3.7. Position of the wireless device in relation to the phantom

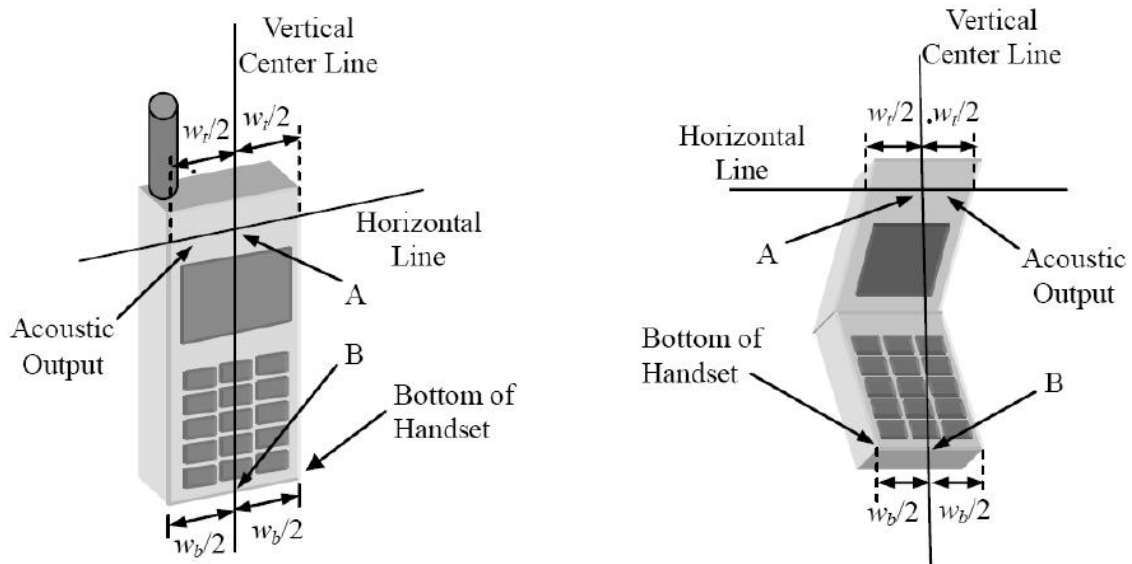
#### General considerations

This standard specifies two handset test positions against the head phantom – the “cheek” position and the “tilt” position.

The power flow density is calculated assuming the excitation field as a free space field

$$P_{(pwe)} = \frac{E_{tot}^2}{3770} \text{ or } P_{(pwe)} = H_{tot}^2 \cdot 37.7$$

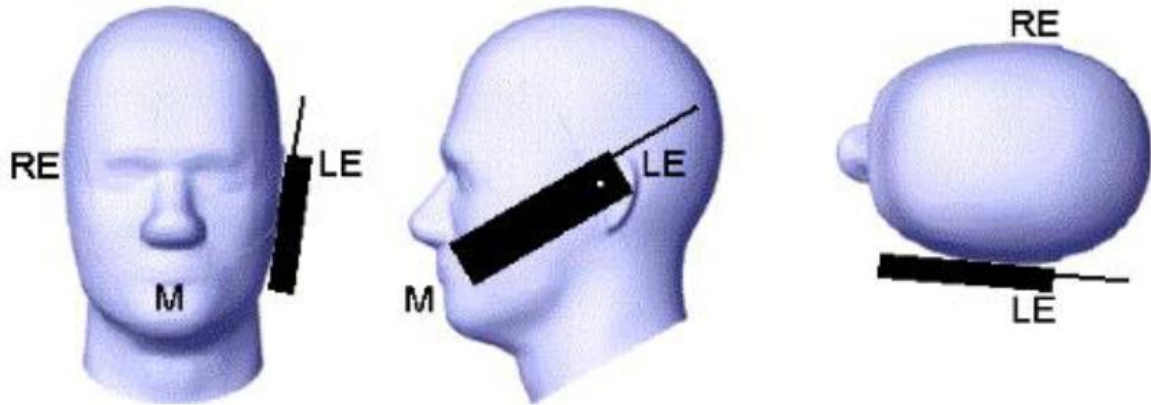
- Where P<sub>pwe</sub>=Equivalent power density of a plane wave in mW/cm<sup>2</sup>
- E<sub>tot</sub>=total electric field strength in V/m
- H<sub>tot</sub>=total magnetic field strength in A/m



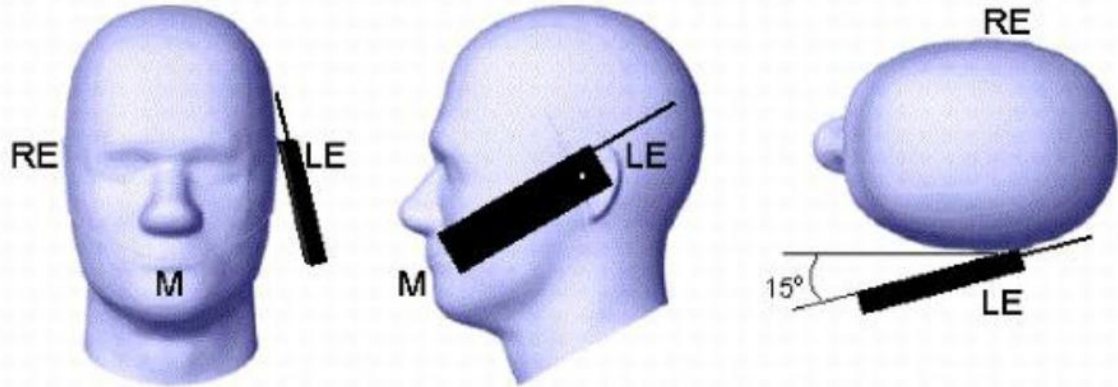
- W<sub>t</sub> Width of the handset at the level of the acoustic
- W<sub>b</sub> Width of the bottom of the handset
- A Midpoint of the width w<sub>t</sub> of the handset at the level of the acoustic output
- B Midpoint of the width w<sub>b</sub> of the bottom of the handset

Picture 1-a Typical “fixed” case handset    Picture 1-b Typical “clam-shell” case handset





Picture 2 Cheek position of the wireless device on the left side of SAM



Picture 3 Tilt position of the wireless device on the left side of SAM

For body SAR test we applied to FCC KDB941225, KDB447498, KDB248227, KDB648654;

### 3.8. Tissue Dielectric Parameters for Head and Body Phantoms

The liquid is consisted of water,salt,Glycol,Sugar,Preventol and Cellulose.The liquid has previously been proven to be suited for worst-case.It's satisfying the latest tissue dielectric parameters requirements proposed by the KDB865664.

The composition of the tissue simulating liquid

Ingredient (% Weight)	750MHz		835MHz		1800 MHz		1900 MHz		2450MHz		2600MHz		5000MHz	
	Head	Body	Head	Body	Head	Body	Head	Body	Head	Body	Head	Body	Head	Body
Water	39.28	51.3	41.45	52.5	54.5	40.2	54.9	40.4	62.7	73.2	60.3	71.4	65.5	78.6
Preventol	0.10	0.10	0.10	0.10	0.00	0.00	0.00	0.00	0.00	0.00	0.00	0.00	0.00	0.00
HEC	1.00	1.00	1.00	1.00	0.00	0.00	0.00	0.00	0.00	0.00	0.00	0.00	0.00	0.00
DGBE	0.00	0.00	0.00	0.00	45.33	59.31	44.92	59.10	36.80	26.70	39.10	28.40	0.00	0.00
Triton X-100	0.00	0.00	0.00	0.00	0.00	0.00	0.00	0.00	0.00	0.00	0.00	0.00	17.2	10.7

Target Frequency (MHz)	Head		Body	
	$\epsilon_r$	$\sigma$ (S/m)	$\epsilon_r$	$\sigma$ (S/m)
150	52.3	0.76	61.9	0.80
300	45.3	0.87	58.2	0.92
450	43.5	0.87	56.7	0.94
835	41.5	0.90	55.2	0.97
900	41.5	0.97	55.0	1.05
915	41.5	0.98	55.0	1.06
1450	40.5	1.20	54.0	1.30
1610	40.3	1.29	53.8	1.40
1800-2000	40.0	1.40	53.3	1.52
2450	39.2	1.80	52.7	1.95
3000	38.5	2.40	52.0	2.73
5800	35.3	5.27	48.2	6.00

### 3.9. Tissue equivalent liquid properties

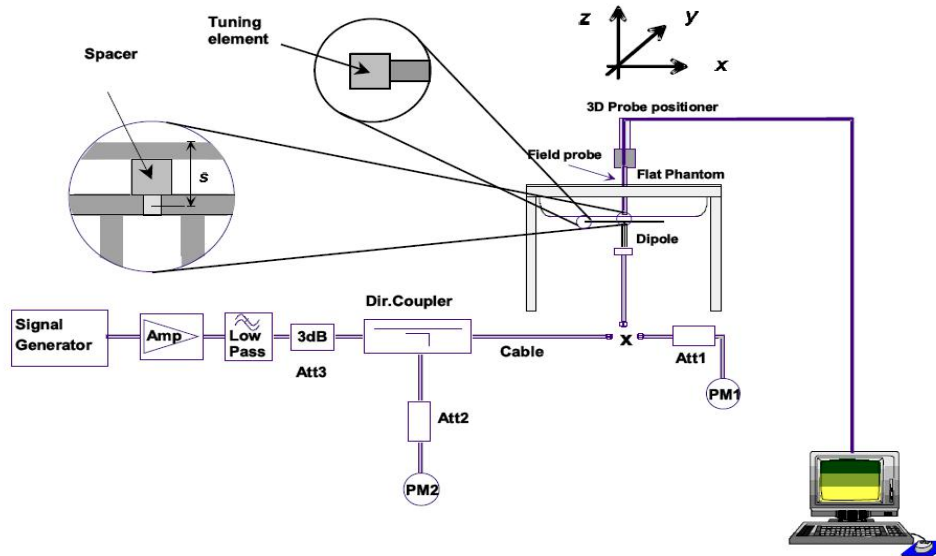
Dielectric Performance of Head and Body Tissue Simulating Liquid

Test Engineer: Jenny Wu									
Tissue Type	Measured Frequency (MHz)	Target Tissue		Measured Tissue				Liquid Temp.	Test Data
		$\sigma$	$\epsilon_r$	$\sigma$	Dev.	$\epsilon_r$	Dev.		
835H	835	0.90	41.50	0.92	2.22%	42.82	1.81%	21.5	11/24/2020
1800H	1800	1.52	53.30	1.50	-1.32%	52.11	-2.23%	21.6	11/30/2020
1900H	1900	1.40	40.00	1.37	-2.14%	38.56	-3.60%	22.3	12/10/2020
2450H	2450	1.80	39.20	1.84	2.22%	39.70	1.28%	23.4	12/22/2020
2600H	2600	1.96	39.00	1.92	-2.04%	38.43	-1.46%	21.8	12/31/2020

### 3.10. System Check

The purpose of the system check is to verify that the system operates within its specifications at the device test frequency. The system check is simple check of repeatability to make sure that the system works correctly at the time of the compliance test;

System check results have to be equal or near the values determined during dipole calibration with the relevant liquids and test system ( $\pm 10\%$ ).



The output power on dipole port must be calibrated to 20 dBm (100mW) before dipole is connected.



Photo of Dipole Setup

**Justification for Extended SAR Dipole Calibrations**

Referring to KDB 865664D01V01r04, if dipoles are verified in return loss (<-20dB, within 20% of prior calibration), and in impedance (within 5 ohm of prior calibration), the annual calibration is not necessary and the calibration interval can be extended. While calibration intervals not exceed 3 years.

## SID835 SN 07/14 DIP 0G835-303 Extend Dipole Calibrations

Date of Measurement	Return-Loss (dB)	Delta (%)	Real Impedance (ohm)	Delta (ohm)	Imaginary Impedance (ohm)	Delta (ohm)
2018-10-01	-24.49		54.9		2.8	
2019-10-01	-24.17	-1.31	54.5	-0.4	2.6	-0.2

## SID1800 SN 30/14 DIP 1G800-301 Extend Dipole Calibrations

Date of Measurement	Return-Loss (dB)	Delta (%)	Real Impedance (ohm)	Delta (ohm)	Imaginary Impedance (ohm)	Delta (ohm)
2018-10-01	-20.26		43.1		6.9	
2019-10-01	-20.13	-0.64	42.9	-0.2	6.7	-0.2

## SID1900 SN 38/18 DIP 1G900-466 Extend Dipole Calibrations

Date of Measurement	Return-Loss (dB)	Delta (%)	Real Impedance (ohm)	Delta (ohm)	Imaginary Impedance (ohm)	Delta (ohm)
2018-09-01	-26.43		50.5		4.7	
2019-09-01	-26.33	-0.38	50.2	-0.3	4.5	-0.2

## SID2600 SN 38/18 DIP 2G600-468 Extend Dipole Calibrations

Date of Measurement	Return-Loss (dB)	Delta (%)	Real Impedance (ohm)	Delta (ohm)	Imaginary Impedance (ohm)	Delta (ohm)
2018-09-24	-29.14		49.2		3.4	
2019-09-24	-29.12	-0.07	49.1	-0.1	3.2	-0.1

## SID2450 SN 07/14 DIP 2G450-306 Extend Dipole Calibrations

Date of Measurement	Return-Loss (dB)	Delta (%)	Real Impedance (ohm)	Delta (ohm)	Imaginary Impedance (ohm)	Delta (ohm)
2018-10-01	-25.59		44.7		-1.1	
2019-10-01	-25.68	0.35	44.8	0.1	-1.0	0.1

Mixture Type	Frequency (MHz)	Power	SAR <sub>1g</sub> (W/kg)	SAR <sub>10g</sub> (W/kg)	Drift (%)	1W Target		Difference percentage		Liquid Temp	Date
						SAR <sub>1g</sub> (W/kg)	SAR <sub>10g</sub> (W/kg)	1g	10g		
Head	835	100 mW	0.923	0.639	2.03	9.60	6.20	-3.85%	3.06%	21.5	11/24/2020
		Normalize to 1 Watt	9.23	6.39							
Head	1800	100 mW	3.853	2.055	1.62	39.03	20.65	-1.28%	-0.48%	21.6	11/30/2020
		Normalize to 1 Watt	38.53	20.55							
Head	1900	100 mW	3.911	2.096	-1.20	40.03	20.55	-2.30%	2.00%	22.3	12/10/2020
		Normalize to 1 Watt	39.11	20.96							
Head	2450	100 mW	5.487	2.521	-0.08	53.89	24.15	1.82%	4.39%	23.4	12/22/2020
		Normalize to 1 Watt	54.87	25.21							
Head	2600	100 mW	5.747	2.246	3.14	56.91	24.69	0.98%	-9.03%	21.8	12/31/2020
		Normalize to 1 Watt	57.47	22.46							

### 3.11. SAR measurement procedure

The measurement procedures are as follows:

#### 3.11.1 Conducted power measurement

- a. For WWAN power measurement, use base station simulator connection with RF cable, at maximum power in each supported wireless interface and frequency band.
- b. Read the WWAN RF power level from the base station simulator.
- c. For WLAN/BT power measurement, use engineering software to configure EUT WLAN/BT continuously Transmission, at maximum RF power in each supported wireless interface and frequency band.
- d. Connect EUT RF port through RF cable to the power meter, and measure WLAN/BT output power.

#### 3.11.2 GSM Test Configuration

SAR tests for GSM 850 and GSM 1900, a communication link is set up with a System Simulator (SS) by air link. Using CMU200 the power level is set to "5" for GSM 850, set to "0" for GSM 1900. Since the GPRS class is 12 for this EUT, it has at most 4 timeslots in uplink and at most 4 timeslots in downlink, the maximum total timeslots is 4. the EGPRS class is 12 for this EUT, it has at most 4 timeslots in uplink and at most 4 timeslots in downlink, the maximum total timeslots is 4.

SAR test reduction for GPRS and EDGE modes is determined by the source-based time-averaged output power specified for production units, including tune-up tolerance. The data mode with highest specified time-averaged output power should be tested for SAR compliance in the applicable exposure conditions. For modes with the same specified maximum output power and tolerance, the higher number time-slot configuration should be tested. GSM voice and GPRS data use GMSK, which is a constant amplitude modulation with minimal peak to average power difference within the time-slot burst. For EDGE, GMSK is used for MCS 1 – MCS 4 and 8-PSK is used for MCS 5 – MCS 9; where 8-PSK has an inherently higher peak-to-average power ratio. The GMSK and 8-PSK EDGE configurations are considered separately for SAR compliance. The GMSK EDGE configurations are grouped with GPRS and considered with respect to time-averaged maximum output power to determine compliance. The 3G SAR test reduction procedure is applied to 8-PSK EDGE with GMSK GPRS/EDGE as the primary mode.

#### 3.11.3 UMTS Test Configuration

##### 3G SAR Test Reduction Procedure

In the following procedures, the mode tested for SAR is referred to as the primary mode. The equivalent modes considered for SAR test reduction are denoted as secondary modes. Both primary and secondary modes must be in the same frequency band. When the maximum output power and tune-up tolerance specified for production units in a secondary mode is  $\leq \frac{1}{4}$  dB higher than the primary mode or when the highest reported SAR of the primary mode is scaled by the ratio of specified maximum output power and tune-up tolerance of secondary to primary mode and the adjusted SAR is  $\leq 1.2$  W/kg, SAR measurement is not required for the secondary mode.<sup>3</sup> This is referred to as the 3G SAR test reduction procedure in the following SAR test guidance, where the primary mode is identified in the applicable wireless mode test procedures and the secondary mode is wireless mode being considered for SAR test reduction by that procedure. When the 3G SAR test reduction procedure is not satisfied, it is identified as "otherwise" in the applicable procedures; SAR measurement is required for the secondary mode.

##### Output power Verification

Maximum output power is verified on the high, middle and low channels according to procedures described in section 5.2 of 3GPP TS 34.121, using the appropriate RMC or AMR with TPC (transmit power control) set to all "1's" for WCDMA/HSDPA or by applying the required inner loop power control procedures to maintain maximum output power while HSUPA is active. Results for all applicable physical channel configurations (DPCCH, DPDCHn and spreading codes, HSDPA, HSPA) are required in the SAR report. All configurations that are not supported by the handset or cannot be measured due to technical or equipment limitations must be clearly identified.

##### Head SAR

SAR for next to the ear head exposure is measured using a 12.2 kbps RMC with TPC bits configured to all "1's". The 3G SAR test reduction procedure is applied to AMR configurations with 12.2 kbps RMC as the primary mode. Otherwise, SAR is measured for 12.2 kbps AMR in 3.4 kbps SRB (signaling radio bearer) using the highest reported SAR configuration in 12.2 kbps RMC for head exposure.

##### 1) Body-Worn Accessory SAR

SAR for body-worn accessory configurations is measured using a 12.2 kbps RMC with TPC bits configured to all "1's". The 3G SAR test reduction procedure is applied to other spreading codes and multiple DPDCHn

configurations supported by the handset with 12.2 kbps RMC as the primary mode. Otherwise, SAR is measured using an applicable RMC configuration with the corresponding spreading code or DPDCHn, for the highest reported body-worn accessory exposure SAR configuration in 12.2 kbps RMC. When more than 2 DPDCHn are supported by the handset, it may be necessary to configure additional DPDCHn using FTM (Factory Test Mode) or other chipset based test approaches with parameters similar to those used in 384 kbps and 768 kbps RMC.

## 2) Handsets with Release 5 HSDPA

The 3G SAR test reduction procedure is applied to HSDPA body-worn accessory configurations with 12.2 kbps RMC as the primary mode. Otherwise, SAR is measured for HSDPA using the HSDPA body SAR procedures in the "Release 5 HSDPA Data Devices" section of this document, for the highest reported SAR body-worn accessory exposure configuration in 12.2 kbps RMC. Handsets with both HSDPA and HSUPA are tested according to Release 6 HSPA test procedures.

HSDPA should be configured according to the UE category of a test device. The number of HSDSCH/ HS-PDSCHs, HARQ processes, minimum inter-TTI interval, transport block sizes and RV coding sequence are defined by the H-set. To maintain a consistent test configuration and stable transmission conditions, QPSK is used in the H-set for SAR testing. HS-DPCCH should be configured with a CQI feedback cycle of 4 ms with a CQI repetition factor of 2 to maintain a constant rate of active CQI slots. DPCCH and DPDCH gain factors ( $\beta_c$ ,  $\beta_d$ ), and HS-DPCCH power offset parameters ( $\Delta_{ACK}$ ,  $\Delta_{NACK}$ ,  $\Delta_{CQI}$ ) should be set according to values indicated in the Table below. The CQI value is determined by the UE category, transport block size, number of HS-PDSCHs and modulation used in the H-set

**Table 2: Subtests for UMTS Release 5 HSDPA**

Sub-set	$\beta_c$	$\beta_d$	$\beta_d$ (SF)	$\beta_c/\beta_d$	$\beta_{hs}$ (note 1, note 2)	CM(dB) (note 3)	MPR(dB)
1	2/15	15/15	64	2/15	4/15	0.0	0.0
2	12/15 (note 4)	15/15 (note 4)	64	12/15 (note 4)	24/15	1.0	0.0
3	15/15	8/15	64	15/8	30/15	1.5	0.5
4	15/15	4/15	64	15/4	30/15	1.5	0.5

Note1:  $\Delta_{ACK}$ ,  $\Delta_{NACK}$  and  $\Delta_{CQI} = 8 \Leftrightarrow A_{hs} = \beta_{hs}/\beta_c = 30/15 \Leftrightarrow \beta_{hs} = 30/15 * \beta_c$   
 Note2: CM=1 for  $\beta_c/\beta_d = 12/15$ ,  $\beta_{hs}/\beta_c = 24/15$ .  
 Note3: For subtest 2 the  $\beta_c/\beta_d$  ratio of 12/15 for the TFC during the measurement period (TF1, TF0) is achieved by setting the signaled gain factors for the reference TFC (TFC1, TF1) to  $\beta_c = 11/15$  and  $\beta_d = 15/15$ .

## HSUPA Test Configuration

The 3G SAR test reduction procedure is applied to HSPA (HSUPA/HSDPA with RMC) body-worn accessory configurations with 12.2 kbps RMC as the primary mode. Otherwise, SAR is measured for HSPA using the HSPA body SAR procedures in the "Release 6 HSPA Data Devices" section of this document, for the highest reported body-worn accessory exposure SAR configuration in 12.2 kbps RMC. When VOIP is applicable for next to the ear head exposure in HSPA, the 3G SAR test reduction procedure is applied to HSPA with 12.2 kbps RMC as the primary mode; otherwise, the same HSPA configuration used for body-worn accessory measurements is tested for next to the ear head exposure.

Due to inner loop power control requirements in HSPA, a communication test set is required for output power and SAR tests. The 12.2 kbps RMC, FRC H-set 1 and E-DCH configurations for HSPA are configured according to the  $\beta$  values indicated in Table 2 and other applicable procedures described in the 'WCDMA Handset' and 'Release 5 HSDPA Data Devices' sections of this document

**Table 3: Sub-Test 5 Setup for Release 6 HSUPA**

Sub-set	$\beta_c$	$\beta_d$	$\beta_d$ (SF)	$\beta_c/\beta_d$	$\beta_{hs}^{(1)}$	$\beta_{ec}$	$\beta_{ed}$	$\beta_{ed}$ (SF)	$\beta_{ed}$ (codes)	CM <sup>(2)</sup> (dB)	MPR (dB)	AG <sup>(4)</sup> Index	E- TFCI
1	11/15 <sup>(3)</sup>	15/15 <sup>(3)</sup>	64	11/15 <sup>(3)</sup>	22/15	209/225	1039/225	4	1	1.0	0.0	20	75
2	6/15	15/15	64	6/15	12/15	12/15	94/75	4	1	3.0	2.0	12	67
3	15/15	9/15	64	15/9	30/15	30/15	$\beta_{ed1}$ : 47/15 $\beta_{ed2}$ : 47/15	4	2	2.0	1.0	15	92
4	2/15	15/15	64	2/15	4/15	2/15	56/75	4	1	3.0	2.0	17	71
5	15/15 <sup>(4)</sup>	15/15 <sup>(4)</sup>	64	15/15 <sup>(4)</sup>	30/15	24/15	134/15	4	1	1.0	0.0	21	81

Note 1:  $\Delta_{ACK}$ ,  $\Delta_{NACK}$  and  $\Delta_{CQI} = 8 \Leftrightarrow A_{hs} = \beta_{hs}/\beta_c = 30/15 \Leftrightarrow \beta_{hs} = 30/15 * \beta_c$ .

Note 2:  $CM = 1$  for  $\beta_c/\beta_d = 12/15$ ,  $\beta_{hs}/\beta_c = 24/15$ . For all other combinations of DPDCH, DPCCH, HS-DPCCH, E-DPDCH and E-DPCCH the MPR is based on the relative CM difference.

Note 3: For subtest 1 the  $\beta_c/\beta_d$  ratio of 11/15 for the TFC during the measurement period (TF1, TF0) is achieved by setting the signaled gain factors for the reference TFC (TF1, TF1) to  $\beta_c = 10/15$  and  $\beta_d = 15/15$ .

Note 4: For subtest 5 the  $\beta_c/\beta_d$  ratio of 15/15 for the TFC during the measurement period (TF1, TF0) is achieved by setting the signaled gain factors for the reference TFC (TF1, TF1) to  $\beta_c = 14/15$  and  $\beta_d = 15/15$ .

Note 5: Testing UE using E-DPDCH Physical Layer category 1 Sub-test 3 is not required according to TS 25.306 Figure 5.1g.

Note 6:  $\beta_{ed}$  can not be set directly; it is set by Absolute Grant Value.

### 3.11.4 LTE Test Configuration

#### QPSK with 1 RB allocation

Start with the largest channel bandwidth and measure SAR for QPSK with 1 RB allocation, using the RB offset and required test channel combination with the highest maximum output power among RB offsets at the upper edge, middle and lower edge of each required test channel. When the reported SAR is  $\leq 0.8$  W/kg, testing of the remaining RB offset configurations and required test channels is not required for 1 RB allocation; otherwise, SAR is required for the remaining required test channels and only for the RB offset configuration with the highest output power for that channel.8 When the reported SAR of a required test channel is  $> 1.45$  W/kg, SAR is required for all three RB offset configurations for that required test channel.

#### QPSK with 50% RB allocation

The procedures required for 1 RB allocation in section 4.2.1 are applied to measure the SAR for QPSK with 50% RB allocation.9

#### QPSK with 100% RB allocation

For QPSK with 100% RB allocation, SAR is not required when the highest maximum output power for 100 % RB allocation is less than the highest maximum output power in 50% and 1 RB allocations and the highest reported SAR for 1 RB and 50% RB allocation in sections 4.2.1 and 4.2.2 are  $\leq 0.8$  W/kg. Otherwise, SAR is measured for the highest output power channel; and if the reported SAR is  $> 1.45$  W/kg, the remaining required test channels must also be tested.

### 3.11.5 WIFI Test Configuration

The SAR measurement and test reduction procedures are structured according to either the DSSS or OFDM transmission mode configurations used in each standalone frequency band and aggregated band. For devices that operate in exposure configurations that require multiple test positions, additional SAR test reduction may be applied. The maximum output power specified for production units, including tune-up tolerance, are used to determine initial SAR test requirements for the 802.11 transmission modes in a frequency band. SAR is measured using the highest measured maximum output power channel for the initial test configuration. SAR measurement and test reduction for the remaining 802.11 modes and test channels are determined according to measured or specified maximum output power and reported SAR of the initial measurements. The general test reduction and SAR measurement approaches are summarized in the following:

1. The maximum output power specified for production units are determined for all applicable 802.11 transmission modes in each standalone and aggregated frequency band. Maximum output power is measured for the highest maximum output power configuration(s) in each frequency band according to the default power measurement procedures.
2. For OFDM transmission configurations in the 2.4 GHz and 5 GHz bands, an "initial test configuration" is first determined for each standalone and aggregated frequency band according to the maximum output power and tune-up tolerance specified for production units.
  - a. When the same maximum power is specified for multiple transmission modes in a frequency band, the largest channel bandwidth, lowest order modulation, lowest data rate and lowest order 802.11a/g/n/ac mode is used for SAR measurement, on the highest measured output power channel in the initial test configuration, for each frequency band.
  - b. SAR is measured for OFDM configurations using the initial test configuration procedures. Additional frequency band specific SAR test reduction may be considered for individual frequency bands
  - c. Depending on the reported SAR of the highest maximum output power channel tested in the initial test configuration, SAR test reduction may apply to subsequent highest output channels in the initial test configuration to reduce the number of SAR measurements.
3. The Initial test configuration does not apply to DSSS. The 2.4 GHz band SAR test requirements and 802.11b DSSS procedures are used to establish the transmission configurations required for SAR measurement.
4. An "initial test position" is applied to further reduce the number of SAR tests for devices operating in next to the ear, UMPC mini-tablet or hotspot mode exposure configurations that require multiple test positions .
  - a. SAR is measured for 802.11b according to the 2.4 GHz DSSS procedure using the exposure condition established by the initial test position.



- b. SAR is measured for 2.4 GHz and 5 GHz OFDM configurations using the initial test configuration. 802.11b/g/n operating modes are tested independently according to the service requirements in each frequency band. 802.11b/g/n modes are tested on the maximum average output channel.
5. The Initial test position does not apply to devices that require a fixed exposure test position. SAR is measured in a fixed exposure test position for these devices in 802.11b according to the 2.4 GHz DSSS procedure or in 2.4 GHz and 5 GHz OFDM configurations using the initial test configuration procedures.
6. The "subsequent test configuration" procedures are applied to determine if additional SAR measurements are required for the remaining OFDM transmission modes that have not been tested in the initial test configuration. SAR test exclusion is determined according to reported SAR in the initial test configuration and maximum output power specified or measured for these other OFDM configurations.

#### 2.4 GHz and 5GHz SAR Procedures

Separate SAR procedures are applied to DSSS and OFDM configurations in the 2.4 GHz band to simplify DSSS test requirements. For 802.11b DSSS SAR measurements, DSSS SAR procedure applies to fixed exposure test position and initial test position procedure applies to multiple exposure test positions. When SAR measurement is required for an OFDM configuration, the initial test configuration, subsequent test configuration and initial test position procedures are applied. The SAR test exclusion requirements for 802.11g/n OFDM configurations are described in section 5.2.2.

##### 1. 802.11b DSSS SAR Test Requirements

SAR is measured for 2.4 GHz 802.11b DSSS using either a fixed test position or, when applicable, the initial test position procedure. SAR test reduction is determined according to the following:

- a. When the reported SAR of the highest measured maximum output power channel (section 3.1) for the exposure configuration is  $\leq 0.8$  W/kg, no further SAR testing is required for 802.11b DSSS in that exposure configuration.
- b. When the reported SAR is  $> 0.8$  W/kg, SAR is required for that exposure configuration using the next highest measured output power channel. When any reported SAR is  $> 1.2$  W/kg, SAR is required for the third channel; i.e., all channels require testing.

##### 1. 2.4 GHz 802.11g/n OFDM SAR Test Exclusion Requirements

When SAR measurement is required for 2.4 GHz 802.11g/n OFDM configurations, the measurement and test reduction procedures for OFDM are applied (section 5.3). SAR is not required for the following 2.4 GHz OFDM conditions.

- a. When KDB Publication 447498 SAR test exclusion applies to the OFDM configuration
- b. When the highest reported SAR for DSSS is adjusted by the ratio of OFDM to DSSS specified maximum output power and the adjusted SAR is  $\leq 1.2$  W/kg.

##### 2. SAR Test Requirements for OFDM Configurations

When SAR measurement is required for 802.11 a/g/n/ac OFDM configurations, each standalone and frequency aggregated band is considered separately for SAR test reduction. When the same transmitter and antenna(s) are used for U-NII-1 and U-NII-2A bands, additional SAR test reduction applies. When band gap channels between U-NII-2C band and 5.8 GHz U-NII-3 or §15.247 band are supported, the highest maximum output power transmission mode configuration and maximum output power channel across the bands must be used to determine SAR test reduction, according to the initial test configuration and subsequent test configuration requirements.<sup>20</sup> In applying the initial test configuration and subsequent test configuration procedures, the 802.11 transmission configuration with the highest specified maximum output power and the channel within a test configuration with the highest measured maximum output power should be clearly distinguished to apply the procedures.

##### 3. OFDM Transmission Mode SAR Test Configuration and Channel Selection Requirements

The initial test configuration for 2.4 GHz and 5 GHz OFDM transmission modes is determined by the 802.11 configuration with the highest maximum output power specified for production units, including tune-up tolerance, in each standalone and aggregated frequency band. SAR for the initial test configuration is measured using the highest maximum output power channel determined by the default power measurement procedures (section 4). When multiple configurations in a frequency band have the same specified maximum output power, the initial test configuration is determined according to the following steps applied sequentially.

- a. The largest channel bandwidth configuration is selected among the multiple configurations with the same specified maximum output power.
- b. If multiple configurations have the same specified maximum output power and largest channel bandwidth, the lowest order modulation among the largest channel bandwidth configurations is selected.
- c. If multiple configurations have the same specified maximum output power, largest channel bandwidth and lowest order modulation, the lowest data rate configuration among these configurations is selected.
- d. When multiple transmission modes (802.11a/g/n/ac) have the same specified maximum output power, largest channel bandwidth, lowest order modulation and lowest data rate, the lowest order 802.11 mode is selected; i.e., 802.11a is chosen over 802.11n then 802.11ac or 802.11g is chosen over 802.11n.

After an initial test configuration is determined, if multiple test channels have the same measured maximum output power, the channel chosen for SAR measurement is determined according to the following. These channel selection procedures apply to both the initial test configuration and subsequent test configuration(s), with respect

to the default power measurement procedures or additional power measurements required for further SAR test reduction. The same procedures also apply to subsequent highest output power channel(s) selection.

- a. Channels with measured maximum output power within  $\frac{1}{4}$  dB of each other are considered to have the same maximum output.
- b. When there are multiple test channels with the same measured maximum output power, the channel closest to mid-band frequency is selected for SAR measurement.
- c. When there are multiple test channels with the same measured maximum output power and equal separation from mid-band frequency; for example, high and low channels or two mid-band channels, the higher frequency (number) channel is selected for SAR measurement.

#### Initial Test Configuration Procedures

An initial test configuration is determined for OFDM transmission modes according to the channel bandwidth, modulation and data rate combination(s) with the highest maximum output power specified for production units in each standalone and aggregated frequency band. SAR is measured using the highest measured maximum output power channel. For configurations with the same specified or measured maximum output power, additional transmission mode and test channel selection procedures are required (see section 5.3.2). SAR test reduction of subsequent highest output test channels is based on the reported SAR of the initial test configuration. For next to the ear, hotspot mode and UMC mini-tablet exposure configurations where multiple test positions are required, the initial test position procedure is applied to minimize the number of test positions required for SAR measurement using the initial test configuration transmission mode.<sup>23</sup> For fixed exposure conditions that do not have multiple SAR test positions, SAR is measured in the transmission mode determined by the initial test configuration. When the reported SAR of the initial test configuration is  $> 0.8$  W/kg, SAR measurement is required for the subsequent next highest measured output power channel(s) in the initial test configuration until the reported SAR is  $\leq 1.2$  W/kg or all required channels are tested.

#### 4. Subsequent Test Configuration Procedures

SAR measurement requirements for the remaining 802.11 transmission mode configurations that have not been tested in the initial test configuration are determined separately for each standalone and aggregated frequency band, in each exposure condition, according to the maximum output power specified for production units. The initial test position procedure is applied to next to the ear, UMPC mini-tablet and hotspot mode configurations. When the same maximum output power is specified for multiple transmission modes, the procedures in section 5.3.2 are applied to determine the test configuration. Additional power measurements may be required to determine if SAR measurements are required for subsequent highest output power channels in a subsequent test configuration. The subsequent test configuration and SAR measurement procedures are described in the following.

- a. When SAR test exclusion provisions of KDB Publication 447498 are applicable and SAR measurement is not required for the initial test configuration, SAR is also not required for the next highest maximum output power transmission mode subsequent test configuration(s) in that frequency band or aggregated band and exposure configuration.
- b. When the highest reported SAR for the initial test configuration (when applicable, include subsequent highest output channels), according to the initial test position or fixed exposure position requirements, is adjusted by the ratio of the subsequent test configuration to initial test configuration specified maximum output power and the adjusted SAR is  $\leq 1.2$  W/kg, SAR is not required for that subsequent test configuration.
- c. The number of channels in the initial test configuration and subsequent test configuration can be different due to differences in channel bandwidth. When SAR measurement is required for a subsequent test configuration and the channel bandwidth is smaller than that in the initial test configuration, all channels in the subsequent test configuration that overlap with the larger bandwidth channel tested in the initial test configuration should be used to determine the highest maximum output power channel. This step requires additional power measurement to identify the highest maximum output power channel in the subsequent test configuration to determine SAR test reduction.
  - 1). SAR should first be measured for the channel with highest measured output power in the subsequent test configuration.
  - 2). SAR for subsequent highest measured maximum output power channels in the subsequent test configuration is required only when the reported SAR of the preceding higher maximum output power channel(s) in the subsequent test configuration is  $> 1.2$  W/kg or until all required channels are tested.
    - a) For channels with the same measured maximum output power, SAR should be measured using the channel closest to the center frequency of the larger channel bandwidth channel in the initial test configuration.
  - d. SAR measurements for the remaining highest specified maximum output power OFDM transmission mode configurations that have not been tested in the initial test configuration (highest maximum output) or subsequent test configuration(s) (subsequent next highest maximum output power) is determined by applying the subsequent test configuration procedures in this section to the remaining configurations according to the following:
    - 1) replace "subsequent test configuration" with "next subsequent test configuration" (i.e., subsequent next highest specified maximum output power configuration)
    - 2) replace "initial test configuration" with "all tested higher output power configurations."

### **3.12. Power Reduction**

The product without any power reduction.

### **3.13. Power Drift**

To control the output power stability during the SAR test, SAR system calculates the power drift by measuring the E-field at the same location at the beginning and at the end of the measurement for each test position. This ensures that the power drift during one measurement is within 5%.

## 4. TEST CONDITIONS AND RESULTS

### 4.1 Conducted Power Results

According KDB 447498 D01 General RF Exposure Guidance v06 Section 4.1 2) states that "Unless it is specified differently in the published RF exposure KDB procedures, these requirements also apply to test reduction and test exclusion considerations. Time-averaged maximum conducted output power applies to SAR and, as required by § 2.1091(c), time-averaged ERP applies to MPE. When an antenna port is not available on the device to support conducted power measurement, such as FRS and certain Part 15 transmitters with built-in integral antennas, the maximum output power allowed for production units should be used to determine RF exposure test exclusion and compliance."

#### <GSM Conducted Power>

General Note:

1. Per KDB 447498 D01v06, the maximum output power channel is used for SAR testing and for further SAR test reduction.
2. According to October 2013TCB Workshop, for GSM / GPRS / EGPRS, the number of time slots to test for SAR should correspond to the highest frame-average maximum output power configuration, considering the possibility of e.g. 3rd party VoIP operation for head and body-worn SAR testing, the EUT was set in GPRS (4Tx slot) for GSM850/GSM1900 band due to their highest frame-average power.
3. For hotspot mode SAR testing, GPRS should be evaluated, therefore the EUT was set in GPRS (4 Tx slots) for GSM850/GSM1900 band due to its highest frame-average power.

#### Conducted power measurement results for GSM850/PCS1900

GSM 850	Tune-up	Burst Conducted power (dBm)			Division Factors	Tune-up	Average power (dBm)			
		Channel/Frequency(MHz)					Channel/Frequency(MHz)			
	Max	128/824.2	190/836.6	251/848.8	Max	128/824.2	190/836.6	251/848.8		
GSM	29.50	29.23	29.32	29.11	-9.03dB	20.47	20.20	20.29	20.08	
GPRS (GMSK)	1TX slot	29.50	29.01	29.11	29.23	-9.03dB	20.47	19.98	20.08	20.20
	2TX slot	29.00	27.49	27.65	29.00	-6.02dB	22.98	21.47	21.63	22.98
	<b>3TX slot</b>	<b>27.50</b>	<b>26.26</b>	<b>26.35</b>	<b>27.49</b>	<b>-4.26dB</b>	<b>23.24</b>	<b>22.00</b>	<b>22.09</b>	<b>23.23</b>
	4TX slot	26.50	24.77	24.93	26.26	-3.01dB	23.49	21.76	21.92	23.25
EGPRS (8PSK)	1TX slot	25.50	25.28	25.37	24.77	-9.03dB	16.47	16.25	16.34	15.74
	2TX slot	23.50	23.41	23.50	25.28	-6.02dB	17.48	17.39	17.48	19.26
	3TX slot	23.50	21.95	22.00	23.41	-4.26dB	19.24	17.69	17.74	19.15
	4TX slot	22.00	20.43	20.59	21.95	-3.01dB	18.99	17.42	17.58	18.94
GSM 1900	Tune-up	Burst Conducted power (dBm)			Division Factors	Tune-up	Average power (dBm)			
		Channel/Frequency(MHz)					Channel/Frequency(MHz)			
	Max	512/1850.2	661/1880	810/1909.8	Max.	512/1850.2	661/1880	810/1909.8		
GSM	29.50	29.23	29.33	29.11	-9.03dB	20.47	20.20	20.30	20.08	
GPRS (GMSK)	1TX slot	29.50	29.01	29.15	28.98	-9.03dB	20.47	19.98	20.12	19.95
	2TX slot	28.00	27.48	27.62	27.44	-6.02dB	21.98	21.46	21.60	21.42
	<b>3TX slot</b>	<b>26.50</b>	<b>26.29</b>	<b>26.39</b>	<b>26.18</b>	<b>-4.26dB</b>	<b>22.24</b>	<b>22.03</b>	<b>22.13</b>	<b>21.92</b>
	4TX slot	25.00	24.76	24.94	24.71	-3.01dB	21.99	21.75	21.93	21.70
EGPRS (8PSK)	1TX slot	25.50	25.28	25.35	25.21	-9.03dB	16.47	16.25	16.32	16.18
	2TX slot	23.50	23.36	23.50	23.35	-6.02dB	17.48	17.34	17.48	17.33
	3TX slot	22.50	21.91	22.01	21.79	-4.26dB	18.24	17.65	17.75	17.53
	4TX slot	21.00	20.43	20.59	20.38	-3.01dB	17.99	17.42	17.58	17.37

#### Notes:

##### 1. Division Factors

To average the power, the division factor is as follows:

1TX-slot = 1 transmit time slot out of 8 time slots=> conducted power divided by (8/1) => -9.00dB

2TX-slots = 2 transmit time slots out of 8 time slots=> conducted power divided by (8/2) => -6.00dB

3TX-slots = 3 transmit time slots out of 8 time slots=> conducted power divided by (8/3) => -4.26dB

4TX-slots = 4 transmit time slots out of 8 time slots=> conducted power divided by (8/4) => -3.00dB

2. According to the conducted power as above, the GPRS measurements are performed with 3Txslot for GPRS850 and 3Txslot GPRS1900.

**<UMTS Conducted Power>**

The following tests were conducted according to the test requirements outlines in 3GPP TS 34.121 specification. A summary of these settings are illustrated below:

**HSDPA Setup Configuration:**

- a. The EUT was connected to Base Station E5515C referred to the Setup Configuration.
- b. The RF path losses were compensated into the measurements.
- c. A call was established between EUT and Base Station with following setting:
  - i. Set Gain Factors ( $\beta_c$  and  $\beta_d$ ) and parameters were set according to each
  - ii. Specific sub-test in the following table, C10.1.4, quoted from the TS 34.121
  - iii. Set RMC 12.2Kbps + HSDPA mode.
  - iv. Set Cell Power = -86 dBm
  - v. Set HS-DSCH Configuration Type to FRC (H-set 1, QPSK)
  - vi. Select HSDPA Uplink Parameters
  - vii. Set Delta ACK, Delta NACK and Delta CQI = 8
  - viii. Set Ack-Nack Repetition Factor to 3
  - ix. Set CQI Feedback Cycle (k) to 4 ms
  - x. Set CQI Repetition Factor to 2
  - xi. Power Ctrl Mode = All Up bits
- d. The transmitted maximum output power was recorded.

**Table C.10.1.4:  $\beta$  values for transmitter characteristics tests with HS-DPCCH**

Sub-test	$\beta_c$	$\beta_d$	$\beta_d$ (SF)	$\beta_c/\beta_d$	$\beta_{HS}$ (Note 1, Note 2)	CM (dB) (Note 3)	MPR (dB) (Note 3)
1	2/15	15/15	64	2/15	4/15	0.0	0.0
2	12/15 (Note 4)	15/15 (Note 4)	64	12/15 (Note 4)	24/15	1.0	0.0
3	15/15	8/15	64	15/8	30/15	1.5	0.5
4	15/15	4/15	64	15/4	30/15	1.5	0.5

Note 1:  $\Delta_{ACK}$ ,  $\Delta_{NACK}$  and  $\Delta_{CQI} = 30/15$  with  $\beta_{HS} = 30/15 * \beta_c$ .

Note 2: For the HS-DPCCH power mask requirement test in clause 5.2C, 5.7A, and the Error Vector Magnitude (EVM) with HS-DPCCH test in clause 5.13.1A, and HSDPA EVM with phase discontinuity in clause 5.13.1AA,  $\Delta_{ACK}$  and  $\Delta_{NACK} = 30/15$  with  $\beta_{HS} = 30/15 * \beta_c$ , and  $\Delta_{CQI} = 24/15$  with  $\beta_{HS} = 24/15 * \beta_c$ .

Note 3: CM = 1 for  $\beta_c/\beta_d = 12/15$ ,  $\beta_{HS}/\beta_c = 24/15$ . For all other combinations of DPDCCH, DPCCH and HS-DPCCH the MPR is based on the relative CM difference. This is applicable for only UEs that support HSDPA in release 6 and later releases.

Note 4: For subtest 2 the  $\beta_c/\beta_d$  ratio of 12/15 for the TFC during the measurement period (TF1, TF0) is achieved by setting the signalled gain factors for the reference TFC (TF1, TF1) to  $\beta_c = 11/15$  and  $\beta_d = 15/15$ .

**Setup Configuration****HSUPA Setup Configuration:**

- a. The EUT was connected to Base Station R&S CMU200 referred to the Setup Configuration.
- b. The RF path losses were compensated into the measurements.
- c. A call was established between EUT and Base Station with following setting \* :
  - i. Call Configs = 5.2B, 5.9B, 5.10B, and 5.13.2B with QPSK
  - ii. Set the Gain Factors ( $\beta_c$  and  $\beta_d$ ) and parameters (AG Index) were set according to each specific sub-test in the following table, C11.1.3, quoted from the TS 34.121
  - iii. Set Cell Power = -86 dBm
  - iv. Set Channel Type = 12.2k + HSPA
  - v. Set UE Target Power
  - vi. Power Ctrl Mode= Alternating bits
  - vii. Set and observe the E-TFCI
  - viii. Confirm that E-TFCI is equal to the target E-TFCI of 75 for sub-test 1, and other subtest's E-TFCI
- d. The transmitted maximum output power was recorded.

Table C.11.1.3:  $\beta$  values for transmitter characteristics tests with HS-DPCCH and E-DCH

Sub-test	$\beta_c$	$\beta_d$	$\beta_d$ (SF)	$\beta_c/\beta_d$	$\beta_{HS}$ (Note 1)	$\beta_{ec}$	$\beta_{ed}$ (Note 5) (Note 6)	$\beta_{ed}$ (SF)	$\beta_{ed}$ (Codes)	CM (dB) (Note 2)	MPR (dB) (Note 2)	AG Index (Note 6)	E- TFCI
1	11/15 (Note 3)	15/15 (Note 3)	64	11/15 (Note 3)	22/15	209/2 25	1309/225	4	1	1.0	0.0	20	75
2	6/15	15/15	64	6/15	12/15	12/15	94/75	4	1	3.0	2.0	12	67
3	15/15	9/15	64	15/9	30/15	30/15	$\beta_{ed1}$ : 47/15 $\beta_{ed2}$ : 47/15	4 4	2	2.0	1.0	15	92
4	2/15	15/15	64	2/15	4/15	2/15	56/75	4	1	3.0	2.0	17	71
5	15/15 (Note 4)	15/15 (Note 4)	64	15/15 (Note 4)	30/15	24/15	134/15	4	1	1.0	0.0	21	81

Note 1:  $\Delta_{ACK}$ ,  $\Delta_{NACK}$  and  $\Delta_{CQI} = 30/15$  with  $\beta_{hs} = 30/15 * \beta_c$ .

Note 2: CM = 1 for  $\beta_c/\beta_d = 12/15$ ,  $\beta_{hs}/\beta_c = 24/15$ . For all other combinations of DPDCH, DPCCH, HS-DPCCH, E-DPDCH and E-DPCCH the MPR is based on the relative CM difference.

Note 3: For subtest 1 the  $\beta_c/\beta_d$  ratio of 11/15 for the TFC during the measurement period (TF1, TF0) is achieved by setting the signalled gain factors for the reference TFC (TF1, TF1) to  $\beta_c = 10/15$  and  $\beta_d = 15/15$ .

Note 4: For subtest 5 the  $\beta_c/\beta_d$  ratio of 15/15 for the TFC during the measurement period (TF1, TF0) is achieved by setting the signalled gain factors for the reference TFC (TF1, TF1) to  $\beta_c = 14/15$  and  $\beta_d = 15/15$ .

Note 5: In case of testing by UE using E-DPDCH Physical Layer category 1, Sub-test 3 is omitted according to TS25.306 Table 5.1g.

Note 6:  $\beta_{ed}$  can not be set directly, it is set by Absolute Grant Value.

### General Note

1. Per KDB 941225 D01, RMC 12.2kbps setting is used to evaluate SAR. If AMR 12.2kbps power is < 0.25dB higher than RMC 12.2kbps, SAR tests with AMR 12.2kbps can be excluded.
2. By design, AMR and HSDPA/HSUPA RF power will not be larger than RMC 12.2kbps, detailed information is included in Tune-up Procure exhibit.
3. It is expected by the manufacturer that MPR for some HSDPA/HSUPA subtests may differ from the specification of 3GPP, according to the chipset implementation in this model. The implementation and expected deviation are detailed in tune-up procedure exhibit.

### Conducted Power Measurement Results(WCDMA Band II/V)

Item	band	WCDMA Band II result (dBm)			WCDMA Band V result (dBm)		
		Channel/Frequency(MHz)			Channel/Frequency(MHz)		
	sub-test	9262/ 1852.4	9400/ 1880	9538/ 1907.6	4132/ 826.4	4182/ 836.4	4233/ 846.6
RMC	12.2kbps	23.47	23.55	23.53	23.45	23.50	23.49
	64kbps	22.35	22.96	22.90	22.79	22.69	22.72
	144kbps	22.30	22.82	22.77	22.71	22.75	22.69
	384kbps	22.75	22.76	22.72	22.79	22.85	22.75
HSDPA	Sub -Test 1	22.94	22.99	22.93	22.82	22.72	22.75
	Sub -Test 2	22.70	22.85	22.80	22.74	22.78	22.72
	Sub -Test 3	22.79	22.80	22.81	22.78	22.86	22.87
	Sub -Test 4	22.81	22.75	22.73	22.74	22.83	22.86
HSUPA	Sub -Test 1	22.85	22.78	22.79	22.75	22.82	22.88
	Sub -Test 2	22.85	22.76	22.83	22.85	22.82	22.86
	Sub -Test 3	22.75	22.89	22.84	22.75	22.72	22.84
	Sub -Test 4	22.75	22.71	22.86	22.80	22.82	22.81
	Sub -Test 5	22.82	22.76	22.71	22.89	22.80	22.85

**Note:** When the maximum output power and tune-up tolerance specified for production units in a secondary mode is  $\leq 1/2$ dB higher than the primary mode (RMC12.2kbps) or when the highest reported SAR of the primary mode is scaled by the ratio of specified maximum output power and tune-up tolerance of secondary to primary mode and the adjusted SAR is  $\leq 1.2$  W/kg, SAR measurement is not required for the secondary mode.

**LTE Band4**

BW (MHz)	Frequency (MHz)	RB Configuration		Average Power [dBm]	
		Size	Offset	QPSK	16QAM
1.4	1710.7	1	0	23.00	22.75
		1	3	23.02	22.81
		1	5	23.01	22.73
		3	0	23.06	21.89
		3	2	23.12	21.94
		3	3	23.19	21.97
		6	0	22.17	20.98
	1732.5	1	0	21.38	20.66
		1	3	21.46	20.69
		1	5	21.55	20.72
		3	0	21.53	20.40
		3	2	21.45	20.40
		3	3	21.58	20.49
		6	0	20.51	19.69
	1754.3	1	0	22.90	22.44
		1	3	22.72	22.41
		1	5	22.76	22.40
		3	0	22.60	21.58
		3	2	22.56	21.59
		3	3	22.58	21.34
		6	0	21.63	20.57
3	1711.5	1	0	23.00	23.02
		1	7	23.11	23.05
		1	14	23.04	22.89
		8	0	22.13	21.14
		8	4	22.13	21.10
		8	7	22.15	21.12
		15	0	22.06	21.15
	1732.5	1	0	21.38	21.30
		1	7	21.44	21.22
		1	14	21.60	21.38
		8	0	20.46	19.55
		8	4	20.51	19.59
		8	7	20.56	19.63
		15	0	20.45	19.59
	1753.5	1	0	22.76	22.60
		1	7	22.69	22.53
		1	14	22.55	22.30
		8	0	21.86	21.04
		8	4	21.68	20.98
		8	7	21.63	21.12
		15	0	21.76	20.95
5	1712.5	1	0	23.28	22.78
		1	12	23.18	22.69
		1	24	23.05	22.64
		12	0	22.09	21.19
		12	6	22.06	21.24
		12	13	21.97	21.14
		25	0	22.10	21.23
	1732.5	1	0	21.28	20.94
		1	12	21.36	21.05
		1	24	21.63	21.33
		12	0	20.45	19.54
		12	6	20.44	19.57
		12	13	20.57	19.67
		25	0	20.45	19.69

	1752.5	1	0	23.09	21.64
		1	12	22.92	21.51
		1	24	22.64	21.23
		12	0	22.06	21.15
		12	6	21.87	20.94
		12	13	21.71	20.71
		25	0	21.89	21.10
10	1715.0	1	0	23.23	23.10
		1	24	22.91	22.93
		1	49	22.36	22.29
		25	0	22.09	21.00
		25	12	22.01	20.84
		25	25	21.61	20.52
		50	0	21.91	20.93
	1732.5	1	0	21.30	20.85
		1	24	21.53	21.01
		1	49	22.07	21.54
		25	0	20.40	19.58
		25	12	20.55	19.61
		25	25	20.70	19.77
		50	0	20.57	19.65
	1750.0	1	0	23.21	22.19
		1	24	23.18	22.21
		1	49	22.79	21.74
		25	0	22.13	20.95
		25	12	22.12	20.85
		25	25	21.89	20.81
		50	0	22.02	20.96
15	1717.5	1	0	23.12	23.07
		1	37	22.61	22.62
		1	74	21.60	21.64
		37	0	21.85	20.98
		37	18	21.53	20.52
		37	38	21.17	19.97
		75	0	21.63	20.59
	1732.5	1	0	21.27	21.54
		1	37	21.37	21.52
		1	74	22.31	22.51
		37	0	20.34	19.42
		37	18	20.45	19.56
		37	38	20.93	19.89
		75	0	20.62	19.63
	1747.5	1	0	22.76	21.76
		1	37	23.23	22.24
		1	74	22.77	21.79
		37	0	22.04	21.03
		37	18	22.22	21.16
		37	38	21.98	21.21
		75	0	21.94	21.05
20	1720.0	1	0	23.26	22.58
		1	49	22.33	21.80
		1	99	21.41	20.81
		50	0	21.73	20.84
		50	25	21.24	20.24
		50	50	20.57	19.69
		100	0	21.32	20.19
	1732.5	1	0	21.83	20.73
		1	49	21.72	20.58
		1	99	22.95	21.83
		50	0	20.36	19.70
		50	25	20.58	19.63



		50	50	21.02	20.08
		100	0	20.77	19.80
	1745.0	1	0	21.86	21.08
		1	49	23.09	22.33
		1	99	22.73	21.73
		50	0	21.51	20.66
		50	25	22.12	21.09
		50	50	22.09	21.13
		100	0	21.69	20.85

**LTE Band7**

BW (MHz)	Frequency (MHz)	RB Configuration		Average Power [dBm]	
		Size	Offset	QPSK	16QAM
5	2502.5	1	0	22.08	21.84
		1	12	21.84	21.62
		1	24	21.63	21.34
		12	0	21.22	20.28
		12	6	21.03	20.13
		12	13	20.99	20.00
		25	0	20.95	20.23
	2535.0	1	0	22.85	21.47
		1	12	22.87	21.38
		1	24	22.78	21.41
		12	0	21.81	20.71
		12	6	21.72	20.64
		12	13	21.72	20.68
		25	0	21.69	20.93
	2567.5	1	0	22.30	21.09
		1	12	22.35	21.23
		1	24	22.55	21.37
		12	0	21.17	20.22
		12	6	21.23	20.26
		12	13	21.46	20.36
		25	0	21.28	20.55
10	2505.0	1	0	22.34	21.88
		1	24	21.83	21.47
		1	49	21.68	21.24
		25	0	21.13	20.19
		25	12	20.85	20.14
		25	25	20.68	19.90
		50	0	20.85	20.13
	2535.0	1	0	22.76	22.26
		1	24	22.83	22.35
		1	49	22.63	22.24
		25	0	21.89	20.92
		25	12	21.86	20.91
		25	25	21.81	20.92
		50	0	21.71	20.94
	2565.0	1	0	21.91	21.45
		1	24	22.18	21.76
		1	49	22.46	22.05
		25	0	21.09	20.16
		25	12	21.18	20.26
		25	25	21.30	20.43
		50	0	21.17	20.37
15	2507.5	1	0	22.11	22.17
		1	37	21.60	21.69
		1	74	21.69	21.73
		37	0	20.95	20.16
		37	18	20.74	19.95
		37	38	20.77	19.87
		75	0	20.88	19.94
	2535.0	1	0	22.69	22.62
		1	37	22.81	22.80
		1	74	22.57	22.52
		37	0	21.80	20.93
		37	18	21.79	20.87
		37	38	21.69	20.85
		75	0	21.73	20.87

	2562.5	1	0	21.81	20.97
		1	37	22.00	21.17
		1	74	22.54	21.65
		37	0	20.88	19.90
		37	18	21.02	20.10
		37	38	21.28	20.31
		75	0	21.06	20.07
20	2510.0	1	0	22.30	21.43
		1	49	21.71	20.90
		1	99	22.06	21.16
		50	0	20.90	20.08
		50	25	20.80	19.81
		50	50	20.76	19.87
		100	0	20.74	19.97
	2535.0	1	0	22.77	21.56
		1	49	23.08	21.78
		1	99	22.63	21.43
		50	0	21.74	20.83
		50	25	21.78	20.78
		50	50	21.69	20.81
		100	0	21.72	20.77
	2560.0	1	0	21.91	21.21
		1	49	21.77	21.17
		1	99	22.34	21.68
		50	0	20.81	19.90
		50	25	20.83	19.89
		50	50	21.18	20.13
		100	0	21.00	19.99

<WLAN 2.4GHz Conducted Power>

Mode	Channel	Frequency (MHz)	Data rate (Mbps)	Average Output Power (dBm)
IEEE 802.11b	1	2412	1	19.62
			2	19.10
			5.5	18.32
			11	18.52
	6	2437	1	19.71
			2	18.21
			5.5	18.41
			11	18.33
	11	2462	1	20.77
			2	20.21
			5.5	20.32
			11	20.63
IEEE 802.11g	1	2412	6	22.00
			9	21.65
			12	21.52
			18	21.36
			24	21.11
			36	21.07
			48	21.01
			54	21.12
	6	2437	6	24.11
			9	23.16
			12	23.15
			18	23.14
			24	23.12
			36	23.19
			48	23.25
			54	23.14
	11	2462	6	25.24
			9	24.23
			12	24.01
			18	24.14
			24	24.25
			36	24.22
			48	24.21
			54	24.24
IEEE 802.11n HT20	1	2412	MCS0	23.86
			MCS1	22.23
			MCS2	22.52
			MCS3	22.35
			MCS4	22.46
			MCS5	22.74
			MCS6	22.30
			MCS7	22.19
	6	2437	MCS0	23.66
			MCS1	23.14
			MCS2	23.05
			MCS3	23.06
			MCS4	23.10
			MCS5	23.15
			MCS6	23.12
	11	2462	MCS0	24.59
			MCS1	24.25
			MCS2	24.18
			MCS3	24.39
			MCS4	24.28

			MCS5	24.36
			MCS6	24.24
			MCS7	24.19

**Note:** SAR is not required for the following 2.4 GHz OFDM conditions as the highest reported SAR for DSSS is adjusted by the ratio of OFDM to DSSS specified maximum output power and the adjusted SAR is ≤ 1.2 W/kg.

**<BT Conducted Power>**

Mode	channel	Frequency (MHz)	Conducted AVG output power (dBm)
GFSK-BLE	0	2402	-0.904
	19	2440	-3.655
	39	2480	-4.150
GFSK	0	2402	5.960
	39	2441	3.420
	78	2480	2.467
π/4-DQPSK	0	2402	6.667
	39	2441	3.831
	78	2480	2.903
8DPSK	0	2402	6.991
	39	2441	4.229
	78	2480	3.360

Per KDB 447498 D01v06, the 1-g and 10-g SAR test exclusion thresholds for 100 MHz to 6 GHz at test separation distances ≤ 50 mm are determined by:

$$[(\text{max. power of channel, including tune-up tolerance, mW}) / (\text{min. test separation distance, mm})] \cdot [\sqrt{f(\text{GHz})}] \leq 3.0$$

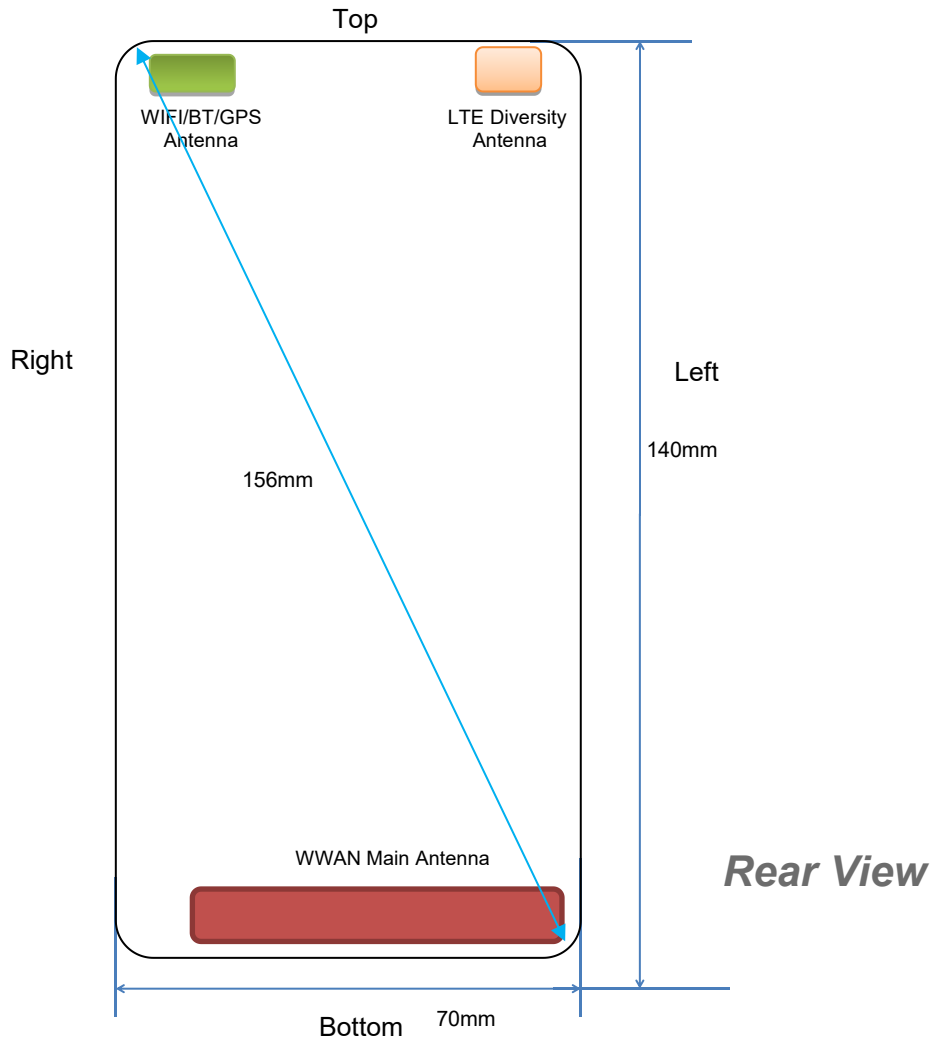
for 1-g SAR and ≤ 7.5 for 10-g extremity SAR

- f(GHz) is the RF channel transmit frequency in GHz
- Power and distance are rounded to the nearest mW and mm before calculation
- The result is rounded to one decimal place for comparison

Bluetooth Turn up Power (dBm)	Separation Distance (mm)	Frequency (GHz)	Exclusion Thresholds
7.0	5	2.45	1.6

Per KDB 447498 D01v06, when the minimum test separation distance is < 5 mm, a distance of 5 mm is applied to determine SAR test exclusion. The test exclusion threshold is 1.6 < 3.0, SAR testing is not required.

### 4.2 Transmit Antennas and SAR Measurement Position



Antenna information:

WWAN Main Antenna	GSM/UMTS/LTE TX/RX
LTE Diversity antenna	Only RX
WLAN/BT Antenna	WLAN/BT TX/RX

Note:

- 1). Per KDB648474 D04, 10-g extremity SAR is not required when Body-Worn mode 1-g reported SAR < 1.2 W/Kg.
- 2). According to the KDB941225 D06 Hot Spot SAR v02, the edges with less than 25 mm distance to the antennas need to be tested for SAR.

Distance of The Antenna to the EUT surface and edge (mm)						
Antennas	Front	Back	Top Side	Bottom Side	Left Side	Right Side
WWAN	<5	<5	135	<5	<5	<5
BT/WLAN	<5	<5	<5	136	65	<5

Positions for SAR tests; Hotspot mode						
Antennas	Front	Back	Top Side	Bottom Side	Left Side	Right Side
WWAN	Yes	Yes	No	Yes	Yes	Yes
BT/WLAN	Yes	Yes	Yes	No	No	Yes

**General Note:** Referring to KDB 941225 D06 v02, When the overall device length and width are  $\geq 9\text{cm} \times 5\text{cm}$ , the test distance is 10mm, SAR must be measured for all sides and surfaces with a transmitting antenna located with 25mm from that surface or edge.

### 4.3 SAR Measurement Results

The calculated SAR is obtained by the following formula:

$$\text{Reported SAR} = \text{Measured SAR} * 10^{(P_{\text{target}} - P_{\text{measured}})/10}$$

$$\text{Scaling factor} = 10^{(P_{\text{target}} - P_{\text{measured}})/10}$$

$$\text{Reported SAR} = \text{Measured SAR} * \text{Scaling factor}$$

Where

$P_{\text{target}}$  is the power of manufacturing upper limit;

$P_{\text{measured}}$  is the measured power;

Measured SAR is measured SAR at measured power which including power drift)

Reported SAR which including Power Drift and Scaling factor

#### Duty Cycle

Test Mode	Duty Cycle
Speech for GSM850/1900	3:8
GPRS850	1:2.67
GPRS1900	1:2.67
UMTS	1:1
LTE	1:1
WLAN2450	1:1

### 4.3.1 SAR Results

#### SAR Values [GSM 850]

Ch.	Freq. (MHz)	Time slots	Test Position	Conducted Power (dBm)	Maximum Allowed Power (dBm)	Power Drift (%)	Scaling Factor	SAR <sub>1-g</sub> results(W/kg)		Graph Results
								Measured	Reported	
measured / reported SAR numbers – Head										
190	836.6	Voice	Left Cheek	29.32	29.50	3.39	1.042	<b>0.734</b>	<b>0.765</b>	Plot 1
190	836.6	Voice	Left Tilt	29.32	29.50	-3.50	1.042	0.325	0.339	
190	836.6	Voice	Right Cheek	29.32	29.50	0.61	1.042	0.621	0.647	
190	836.6	Voice	Right Tilt	29.32	29.50	1.20	1.042	0.287	0.299	
measured / reported SAR numbers - Body (hotspot open, distance 10mm)										
251	848.8	3Txslots	Front	27.49	27.50	-1.20	1.002	0.142	0.142	
251	848.8	3Txslots	Rear	27.49	27.50	2.67	1.002	<b>0.398</b>	<b>0.399</b>	Plot 2
251	848.8	3Txslots	Left	27.49	27.50	0.80	1.002	0.114	0.114	
251	848.8	3Txslots	Right	27.49	27.50	-1.41	1.002	0.215	0.215	
251	848.8	3Txslots	Bottom	27.49	27.50	-0.15	1.002	0.120	0.120	

Remark:

- The value with black color is the maximum SAR Value of each test band.
- The frame average of GPRS (4Tx slots) higher than GSM and sample can support VoIP function, tested at GPRS (4Tx slots) mode for head.
- Per FCC KDB Publication 447498 D01, if the reported (scaled) SAR measured at the middle channel or highest output power channel for each test configuration is  $\leq 0.8$  W/kg then testing at the other channels is optional for such test configuration(s).

#### SAR Values [GSM 1900]

Ch.	Freq. (MHz)	time slots	Test Position	Conducted Power (dBm)	Maximum Allowed Power (dBm)	Power Drift (%)	Scaling Factor	SAR <sub>1-g</sub> results(W/kg)		Graph Results
								Measured	Reported	
measured / reported SAR numbers – Head										
661	1880.0	Voice	Left Cheek	29.33	29.50	-4.22	1.040	<b>0.612</b>	<b>0.636</b>	Plot 3
661	1880.0	Voice	Left Tilt	29.33	29.50	2.30	1.040	0.302	0.314	
661	1880.0	Voice	Right Cheek	29.33	29.50	0.61	1.040	0.563	0.585	
661	1880.0	Voice	Right Tilt	29.33	29.50	1.03	1.040	0.278	0.289	
measured / reported SAR numbers – Body (hotspot open, distance 10mm)										
661	1880.0	3Txslots	Front	26.39	26.50	0.74	1.026	0.340	0.349	
661	1880.0	3Txslots	Rear	26.39	26.50	-1.61	1.026	<b>0.344</b>	<b>0.353</b>	Plot 4
661	1880.0	3Txslots	Left	26.39	26.50	0.18	1.026	0.274	0.281	
661	1880.0	3Txslots	Right	26.39	26.50	-1.03	1.026	0.352	0.361	
661	1880.0	3Txslots	Bottom	26.39	26.50	-0.34	1.026	0.225	0.231	

Remark:

- The value with black color is the maximum SAR Value of each test band.

2. The frame average of GPRS (4Tx slots) higher than GSM and sample can support VoIP function, tested at GPRS (4Tx slots) mode for head.

3. Per FCC KDB Publication 447498 D01, if the reported (scaled) SAR measured at the middle channel or highest output power channel for each test configuration is  $\leq 0.8$  W/kg then testing at the other channels is optional for such test configuration(s).

### SAR Values [WCDMA Band V]

Ch.	Freq. (MHz)	Channel Type	Test Position	Conducted Power (dBm)	Maximum Allowed Power (dBm)	Power Drift (%)	Scaling Factor	SAR <sub>1-g</sub> results(W/kg)		Graph Results
								Measured	Reported	
<i>measured / reported SAR numbers – Head</i>										
4182	846.6	RMC*	Left Cheek	23.50	23.50	-0.91	1.000	<b>0.637</b>	<b>0.637</b>	<b>Plot 5</b>
4182	846.6	RMC*	Left Tilt	23.50	23.50	2.10	1.000	0.321	0.321	
4182	846.6	RMC*	Right Cheek	23.50	23.50	-0.05	1.000	0.512	0.512	
4182	846.6	RMC*	Right Tilt	23.50	23.50	3.16	1.000	0.245	0.245	
<i>measured / reported SAR numbers - Body (hotspot open, distance 10mm)</i>										
4182	846.6	RMC*	Front	23.50	23.50	2.30	1.000	0.134	0.134	
4182	846.6	RMC*	Rear	23.50	23.50	0.53	1.000	<b>0.304</b>	<b>0.304</b>	<b>Plot 6</b>
4182	846.6	RMC*	Left	23.50	23.50	1.42	1.000	0.110	0.110	
4182	846.6	RMC*	Right	23.50	23.50	4.10	1.000	0.070	0.070	
4182	846.6	RMC*	Bottom	23.50	23.50	-0.28	1.000	0.046	0.046	

Remark:

1. The value with black color is the maximum SAR Value of each test band.

2. Per FCC KDB Publication 447498 D01, if the reported (scaled) SAR measured at the middle channel or highest output power channel for each test configuration is  $\leq 0.8$  W/kg then testing at the other channels is optional for such test configuration(s).

3. RMC\* - RMC 12.2kbps mode;

### SAR Values [WCDMA Band II]

Ch.	Freq. (MHz)	Channel Type	Test Position	Conducted Power (dBm)	Maximum Allowed Power (dBm)	Power Drift (%)	Scaling Factor	SAR <sub>1-g</sub> results(W/kg)		Graph Results
								Measured	Reported	
<i>measured / reported SAR numbers – Head</i>										
9400	1880.0	RMC*	Left Cheek	23.55	24.00	-1.25	1.109	<b>0.700</b>	<b>0.776</b>	<b>Plot 7</b>
9400	1880.0	RMC*	Left Tilt	23.55	24.00	0.85	1.109	0.365	0.405	
9400	1880.0	RMC*	Right Cheek	23.55	24.00	0.41	1.109	0.589	0.653	
9400	1880.0	RMC*	Right Tilt	23.55	24.00	3.65	1.109	0.269	0.298	
<i>measured / reported SAR numbers - Body (hotspot open, distance 10mm)</i>										
9400	1880.0	RMC*	Front	23.55	24.00	0.10	1.109	0.352	0.390	
9400	1880.0	RMC*	Rear	23.55	24.00	-0.15	1.109	<b>0.637</b>	<b>0.707</b>	<b>Plot 8</b>
9400	1880.0	RMC*	Left	23.55	24.00	1.17	1.109	0.230	0.255	
9400	1880.0	RMC*	Right	23.55	24.00	-1.03	1.109	0.198	0.220	
9400	1880.0	RMC*	Bottom	23.55	24.00	-0.06	1.109	0.151	0.167	

Remark:

1. The value with black color is the maximum SAR Value of each test band.

2. Per FCC KDB Publication 447498 D01, if the reported (scaled) SAR measured at the middle channel or highest output power channel for each test configuration is  $\leq 0.8$  W/kg then testing at the other channels is optional for such test configuration(s).

3. RMC\* - RMC 12.2kbps mode;



**SAR Values [LTE Band 4]**

Ch.	Freq. (MHz)	Channel Type (10M)	Test Position	Conducted Power (dBm)	Maximum Allowed Power (dBm)	Power Drift (%)	Scaling Factor	SAR <sub>1-g</sub> results(W/kg)		Graph Results
								Measured	Reported	
<i>measured / reported SAR numbers - Head</i>										
20050	1720.0	1RB	Left Cheek	23.26	23.50	0.19	1.057	<b>0.750</b>	<b>0.793</b>	<b>Plot 9</b>
20050	1720.0	1RB	Left Tilt	23.26	23.50	0.12	1.057	0.325	0.343	
20050	1720.0	1RB	Right Cheek	23.26	23.50	0.10	1.057	0.612	0.647	
20050	1720.0	1RB	Right Tilt	23.26	23.50	0.19	1.057	0.295	0.312	
20050	1720.0	50%RB	Left Cheek	21.73	22.00	0.07	1.064	0.521	0.554	
20050	1720.0	50%RB	Left Tilt	21.73	22.00	-1.41	1.064	0.249	0.265	
20050	1720.0	50%RB	Right Cheek	21.73	22.00	1.34	1.064	0.492	0.524	
20050	1720.0	50%RB	Right Tilt	21.73	22.00	-4.16	1.064	0.178	0.189	
<i>measured / reported SAR numbers - Body (hotspot open, distance 10mm)</i>										
20050	1720.0	1RB	Front	23.26	23.50	2.85	1.057	0.349	0.369	
20050	1720.0	1RB	Rear	23.26	23.50	-0.95	1.057	<b>0.721</b>	<b>0.762</b>	<b>Plot 10</b>
20050	1720.0	1RB	Left	23.26	23.50	0.24	1.057	0.124	0.131	
20050	1720.0	1RB	Right	23.26	23.50	-1.47	1.057	0.095	0.100	
20050	1720.0	1RB	Bottom	23.26	23.50	1.23	1.057	0.062	0.066	
20050	1720.0	50%RB	Front	21.73	22.00	1.17	1.064	0.258	0.275	
20050	1720.0	50%RB	Rear	21.73	22.00	2.03	1.064	0.568	0.604	
20050	1720.0	50%RB	Left	21.73	22.00	1.47	1.064	0.074	0.079	
20050	1720.0	50%RB	Right	21.73	22.00	4.23	1.064	0.052	0.055	
20050	1720.0	50%RB	Bottom	21.73	22.00	0.85	1.064	0.031	0.033	

**SAR Values [LTE Band 7]**

Ch.	Freq. (MHz)	Channel Type (20M)	Test Position	Conducted Power (dBm)	Maximum Allowed Power (dBm)	Power Drift (%)	Scaling Factor	SAR <sub>1-g</sub> results(W/kg)		Graph Results
								Measured	Reported	
<i>measured / reported SAR numbers - Head</i>										
21100	2535.0	1RB	Left Cheek	23.08	23.50	0.22	1.102	<b>0.721</b>	<b>0.794</b>	<b>Plot 11</b>
21100	2535.0	1RB	Left Tilt	23.08	23.50	2.03	1.102	0.402	0.443	
21100	2535.0	1RB	Right Cheek	23.08	23.50	4.89	1.102	0.720	0.793	
21100	2535.0	1RB	Right Tilt	23.08	23.50	1.23	1.102	0.356	0.392	
21100	2535.0	50%RB	Left Cheek	21.78	22.00	0.74	1.052	0.702	0.738	
21100	2535.0	50%RB	Left Tilt	21.78	22.00	2.69	1.052	0.354	0.372	
21100	2535.0	50%RB	Right Cheek	21.78	22.00	1.20	1.052	0.641	0.674	
21100	2535.0	50%RB	Right Tilt	21.78	22.00	3.06	1.052	0.312	0.328	
<i>measured / reported SAR numbers - Body (hotspot open, distance 10mm)</i>										
21100	2535.0	1RB	Front	23.08	23.50	1.58	1.102	0.321	0.354	
21100	2535.0	1RB	Rear	23.08	23.50	-1.14	1.102	<b>0.584</b>	<b>0.643</b>	<b>Plot 12</b>
21100	2535.0	1RB	Left	23.08	23.50	0.14	1.102	0.231	0.254	
21100	2535.0	1RB	Right	23.08	23.50	0.22	1.102	0.129	0.142	
21100	2535.0	1RB	Bottom	23.08	23.50	-1.26	1.102	0.365	0.402	
21100	2535.0	50%RB	Front	21.78	22.00	1.20	1.052	0.300	0.316	
21100	2535.0	50%RB	Rear	21.78	22.00	3.62	1.052	0.516	0.543	
21100	2535.0	50%RB	Left	21.78	22.00	-2.03	1.052	0.200	0.210	
21100	2535.0	50%RB	Right	21.78	22.00	0.47	1.052	0.103	0.108	
21100	2535.0	50%RB	Bottom	21.78	22.00	-1.36	1.052	0.315	0.331	

**SAR Values [WIFI2.4G]**

Ch.	Freq. (MHz)	Service	Test Position	Conducted Power (dBm)	Maximum Allowed Power (dBm)	Power Drift (%)	Scaling Factor	SAR <sub>1-g</sub> results(W/kg)		Graph Results
								Measured	Reported	
<i>measured / reported SAR numbers – Head</i>										
6	2437.0	802.11b	Left Cheek	20.77	21.00	-0.35	1.054	0.124	0.131	
6	2437.0	802.11b	Left Tilt	20.77	21.00	1.03	1.054	0.065	0.069	
6	2437.0	802.11b	Right Cheek	20.77	21.00	0.92	1.054	<b>0.168</b>	<b>0.177</b>	<b>Plot 13</b>
6	2437.0	802.11b	Right Tilt	20.77	21.00	-0.39	1.054	0.089	0.094	
<i>measured / reported SAR numbers - Body (hotspot open, distance 10mm)</i>										
6	2437.0	802.11b	Front	20.77	21.00	-0.56	1.054	0.008	0.008	
6	2437.0	802.11b	Rear	20.77	21.00	2.33	1.054	<b>0.062</b>	<b>0.065</b>	<b>Plot 14</b>
6	2437.0	802.11b	Right	20.77	21.00	1.30	1.054	0.007	0.007	
6	2437.0	802.11b	Top	20.77	21.00	0.80	1.054	0.005	0.005	

**Remark:**

1. The value with blue color is the maximum SAR Value of each test band.
2. Per FCC KDB Publication 447498 D01, if the reported (scaled) SAR measured at the middle channel or highest output power channel for each test configuration is  $\leq 0.8$  W/kg then testing at the other channels is optional for such test configuration(s).

### 4.3.2 Standalone SAR Test Exclusion Considerations and Estimated SAR

Per KDB447498 requires when the standalone SAR test exclusion of section 4.3.1 is applied to an antenna that transmits simultaneously with other antennas, the standalone SAR must be estimated according to the following to determine simultaneous transmission SAR test exclusion;

•  $(\text{max. power of channel, including tune-up tolerance, mW}) / (\text{min. test separation distance, mm}) \cdot [\sqrt{f(\text{GHz})}] / x$  W/kg for test separation distances  $\leq 50$  mm;

where  $x = 7.5$  for 1-g SAR, and  $x = 18.75$  for 10-g SAR.

• 0.4 W/kg for 1-g SAR and 1.0 W/kg for 10-g SAR, when the test separation distances is  $> 50$  mm

Per FCC KD B447498 D01, simultaneous transmission SAR test exclusion may be applied when the sum of the 1-g SAR for all the transmitting antenna in a specific a physical test configuration is  $\leq 1.6$  W/Kg. When the sum is greater than the SAR limit, SAR test exclusion is determined by the SAR to peak location separation ratio.

$$\text{Ratio} = \frac{(\text{SAR}_1 + \text{SAR}_2)^{1.5}}{(\text{peak location separation, mm})} < 0.04$$

Estimated stand alone SAR					
Communication system	Frequency (MHz)	Configuration	Maximum Power (dBm)	Separation Distance (mm)	Estimated SAR <sub>1-g</sub> (W/kg)
Bluetooth*	2450	Head	7.00	5	0.210
Bluetooth*	2450	Hotspot	7.00	10	0.105
Bluetooth*	2450	Body-worn	7.00	10	0.105

Remark:

1. Bluetooth\*- Including Lower power Bluetooth
2. Maximum average power including tune-up tolerance;
3. When the minimum test separation distance is  $< 5$  mm, a distance of 5 mm is applied to determine SAR test exclusion
4. Body as body use distance is 10mm from manufacturer declaration of user manual

## 4.4 Simultaneous TX SAR Considerations

### 4.4.1 Introduction

Simultaneous transmission SAR test exclusion is determined for each operating configuration and exposure condition according to the reported standalone SAR of each applicable simultaneous transmitting antenna. The device has 4 antennas, WWAN main antenna, WWAN diversity antenna(RX only), NFC antenna(RX only) and WiFi/BT antenna supports 2.4Wi-Fi, 5.2GWi-Fi, 5.8GWi-Fi and BT. The 2 TX antennas can always transmit simultaneously. The work mode combination is showed as below table.;

Application Simultaneous Transmission information:

Combination No.	Mode
1	WWAN+WIFI
2	WWAN+BT

### 4.4.2 Evaluation of Simultaneous SAR

#### Head Exposure Conditions

#### Simultaneous transmission SAR for WiFi and GSM

Test Position	GSM850 Reported SAR1-g (W/kg)	GSM1900 Reported SAR1-g (W/kg)	WiFi2.4G Reported SAR1-g (W/kg)	MAX. $\Sigma$ SAR1-g (W/kg)	SAR1-g Limit (W/kg)	Peak location separation ratio	Simut Meas. Required
Left Cheek	<b>0.765</b>	0.636	<b>0.131</b>	<b>0.896</b>	1.6	no	no
Left Tilt	<b>0.339</b>	0.314	<b>0.069</b>	0.408	1.6	no	no
Right Cheek	<b>0.647</b>	0.585	<b>0.177</b>	0.824	1.6	no	no
Right Tilt	<b>0.299</b>	0.289	<b>0.094</b>	0.393	1.6	no	no

#### Simultaneous transmission SAR for WiFi and UMTS

Test Position	UMTS Band V Reported SAR1-g	UMTS Band II Reported SAR1-g	WiFi2.4G Reported SAR1-g (W/kg)	MAX. $\Sigma$ SAR1-g (W/kg)	SAR1-g Limit (W/kg)	Peak location separation ratio	Simut Meas. Required
---------------	-----------------------------	------------------------------	---------------------------------	-----------------------------	---------------------	--------------------------------	----------------------

	(W/kg)	(W/kg)					
Left Cheek	0.637	<b>0.776</b>	<b>0.131</b>	<b>0.907</b>	1.6	no	no
Left Tilt	0.321	<b>0.405</b>	<b>0.069</b>	0.474	1.6	no	no
Right Cheek	0.512	<b>0.653</b>	<b>0.177</b>	0.830	1.6	no	no
Right Tilt	0.245	<b>0.298</b>	<b>0.094</b>	0.392	1.6	no	no

#### Simultaneous transmission SAR for WiFi and LTE

Reported SAR1-g(W/kg)	Test Position			
	Left Cheek	Left Tilt	Right Cheek	Right Tilt
LTE Band4	0.793	0.343	0.647	0.312
LTE Band7	<b>0.794</b>	<b>0.443</b>	<b>0.793</b>	<b>0.392</b>
WiFi2.4G	<b>0.131</b>	<b>0.069</b>	<b>0.177</b>	<b>0.094</b>
MAX. $\Sigma$ SAR1-g (W/kg)	<b>0.925</b>	0.512	0.970	0.486
SAR1-g Limit (W/kg)	1.6	1.6	1.6	1.6
Peak location separation ratio	no	no	no	no
Simut Meas. Required	no	no	no	no

#### Simultaneous transmission SAR for BT and GSM

Test Position	GSM850 Reported SAR1-g (W/kg)	GSM1900 Reported SAR1-g (W/kg)	BT Estimated SAR1-g (W/kg)	MAX. $\Sigma$ SAR1-g (W/kg)	SAR1-g Limit (W/kg)	Peak location separation ratio	Simut Meas. Required
Left Cheek	<b>0.765</b>	0.636	<b>0.210</b>	<b>0.975</b>	1.6	no	no
LeftTilt	<b>0.339</b>	0.314	<b>0.210</b>	0.549	1.6	no	no
Right Cheek	<b>0.647</b>	0.585	<b>0.210</b>	0.857	1.6	no	no
Right Tilt	<b>0.299</b>	0.289	<b>0.210</b>	0.509	1.6	no	no

#### Simultaneous transmission SAR for BT and UMTS

Test Position	UMTS Band V Reported SAR1-g (W/kg)	UMTS Band II Reported SAR1-g (W/kg)	BT Estimated SAR1-g (W/kg)	MAX. $\Sigma$ SAR1-g (W/kg)	SAR1-g Limit (W/kg)	Peak location separation ratio	Simut Meas. Required
Left Cheek	0.637	<b>0.776</b>	<b>0.210</b>	<b>0.986</b>	1.6	no	no
LeftTilt	0.321	<b>0.405</b>	<b>0.210</b>	0.615	1.6	no	no
RightChek	0.512	<b>0.653</b>	<b>0.210</b>	0.863	1.6	no	no
Right Tilt	0.245	<b>0.298</b>	<b>0.210</b>	0.508	1.6	no	no

#### Simultaneous transmission SAR for WiFi and LTE

Reported SAR1-g(W/kg)	Test Position			
	Left Cheek	Left Tilt	Right Cheek	Right Tilt
LTE Band4	0.793	0.343	0.627	0.312
LTE Band7	<b>0.794</b>	<b>0.443</b>	<b>0.793</b>	<b>0.392</b>
BT Estimated SAR1-g (W/kg)	<b>0.210</b>	<b>0.210</b>	<b>0.210</b>	<b>0.210</b>
MAX. $\Sigma$ SAR1-g (W/kg)	<b>1.004</b>	0.653	1.003	0.602
SAR1-g Limit (W/kg)	1.6	1.6	1.6	1.6
Peak location separation ratio	no	no	no	no
Simut Meas. Required	no	no	no	no

#### Body Hotspot Exposure Conditions

#### Simultaneous transmission SAR for WiFi and GSM

Test Position	GSM850 Reported SAR1-g (W/kg)	GSM1900 Reported SAR1-g (W/kg)	WiFi2.4G Reported SAR1-g (W/kg)	MAX. $\Sigma$ SAR1-g (W/kg)	SAR1-g Limit (W/kg)	Peak location separation ratio	Simut Meas. Required
Front	0.142	<b>0.349</b>	<b>0.008</b>	0.357	1.6	no	no
Rear	<b>0.399</b>	<b>0.353</b>	<b>0.065</b>	<b>0.418</b>	1.6	no	no
Left	0.114	<b>0.281</b>	/	0.281	1.6	no	no
Right	0.215	<b>0.361</b>	<b>0.007</b>	0.368	1.6	no	no
Bottom	0.120	<b>0.231</b>	/	0.231	1.6	no	no
Top	/	/	<b>0.005</b>	0.005	1.6	no	no

#### Simultaneous transmission SAR for WiFi and UMTS

Test Position	UMTS Band V Reported SAR1-g	UMTS Band II Reported SAR1-g	WiFi2.4G Reported SAR1-g	MAX. $\Sigma$ SAR1-g (W/kg)	SAR1-g Limit (W/kg)	Peak location separation	Simut Meas. Required
---------------	-----------------------------	------------------------------	--------------------------	-----------------------------	---------------------	--------------------------	----------------------

	(W/kg)	(W/kg)	(W/kg)			ratio	
Front	0.134	<b>0.390</b>	<b>0.008</b>	<b>0.398</b>	1.6	no	no
Rear	0.304	<b>0.707</b>	<b>0.065</b>	0.772	1.6	no	no
Left	0.110	<b>0.255</b>	/	0.255	1.6	no	no
Right	0.070	<b>0.220</b>	<b>0.007</b>	0.227	1.6	no	no
Bottom	0.046	<b>0.167</b>	/	0.167	1.6	no	no
Top	/	/	<b>0.005</b>	0.005	1.6	no	no

### SAR for WiFi and LTE

Reported SAR1-g(W/kg)	Test Position					
	Front	Rear	Left	Right	Bottom	Top
LTE Band4	<b>0.369</b>	<b>0.762</b>	<b>0.131</b>	0.100	0.066	
LTE Band7	0.354	0.643	<b>0.254</b>	<b>0.142</b>	<b>0.402</b>	
WiFi2.4G	<b>0.008</b>	<b>0.065</b>	/	<b>0.007</b>	/	<b>0.005</b>
MAX. $\Sigma$ SAR1-g (W/kg)	0.377	<b>0.827</b>	0.385	0.149	0.402	0.005
SAR1-g Limit (W/kg)	1.6	1.6	1.6	1.6	1.6	1.6
Peak location separation ratio	no	no	no	no	no	no
Simut Meas. Required	no	no	no	no	no	no

### Simultaneous transmission SAR for BT and GSM

Test Position	GSM850 Reported SAR1-g (W/kg)	GSM1900 Reported SAR1-g (W/kg)	BT Estimated SAR1-g (W/kg)	MAX. $\Sigma$ SAR1-g (W/kg)	SAR1-g Limit (W/kg)	Peak location separation ratio	Simut Meas. Required
Front	0.142	<b>0.349</b>	<b>0.105</b>	0.454	1.6	no	no
Rear	<b>0.399</b>	0.353	<b>0.105</b>	<b>0.504</b>	1.6	no	no
Left	0.114	<b>0.281</b>	/	0.281	1.6	no	no
Right	0.215	<b>0.361</b>	<b>0.105</b>	0.466	1.6	no	no
Bottom	0.120	<b>0.231</b>	/	0.231	1.6	no	no
Top	/	/	<b>0.105</b>	0.105	1.6	no	no

### Simultaneous transmission SAR for BT and UMTS

Test Position	UMTS Band V Reported SAR1-g (W/kg)	UMTS Band II Reported SAR1-g (W/kg)	BT Estimated SAR1-g (W/kg)	MAX. $\Sigma$ SAR1-g (W/kg)	SAR1-g Limit (W/kg)	Peak location separation ratio	Simut Meas. Required
Front	0.134	<b>0.390</b>	<b>0.105</b>	<b>0.495</b>	1.6	no	no
Rear	0.304	<b>0.707</b>	<b>0.105</b>	0.812	1.6	no	no
Left	0.110	<b>0.255</b>	/	0.255	1.6	no	no
Right	0.070	<b>0.220</b>	<b>0.105</b>	0.325	1.6	no	no
Bottom	0.046	<b>0.167</b>	/	0.167	1.6	no	no
Top	/	/	<b>0.105</b>	0.105	1.6	no	no

### Simultaneous transmission SAR for BT and LTE

Reported SAR1-g(W/kg)	Test Position					
	Front	Rear	Left	Right	Bottom	Top
LTE Band4	<b>0.369</b>	<b>0.343</b>	<b>0.647</b>	<b>0.312</b>	<b>0.554</b>	
LTE Band7	0.354	0.643	0.254	0.142	0.402	/
BT Estimated SAR1-g (W/kg)	<b>0.105</b>	<b>0.105</b>	/	<b>0.105</b>	/	<b>0.105</b>
MAX. $\Sigma$ SAR1-g (W/kg)	<b>0.474</b>	0.448	0.647	0.417	0.554	0.105
SAR1-g Limit (W/kg)	1.6	1.6	1.6	1.6	1.6	1.6
Peak location separation ratio	no	no	no	no	no	no
Simut Meas. Required	no	no	no	no	no	no

Note:

1. The WiFi and BT share same antenna, so cannot transmit at same time.
2. The value with **block** color is the maximum values of standalone
3. The value with blue color is the maximum values of  $\Sigma$ SAR1-g

## 4.5 SAR Measurement Variability

According to KDB865664, Repeated measurements are required only when the measured SAR is  $\geq 0.80$  W/kg. If the measured SAR value of the initial repeated measurement is  $< 1.45$  W/kg with  $\leq 20\%$  variation, only one repeated measurement is required to reaffirm that the results are not expected to have substantial variations, which may introduce significant compliance concerns. A second repeated measurement is required only if the measured result for the initial repeated measurement is within 10% of the SAR limit and vary by more than 20%,

which are often related to device and measurement setup difficulties. The following procedures are applied to determine if repeated measurements are required. The same procedures should be adapted for measurements according to extremity and occupational exposure limits by applying a factor of 2.5 for extremity exposure and a factor of 5 for occupational exposure to the corresponding SAR thresholds.<sup>19</sup> The repeated measurement results must be clearly identified in the SAR report. All measured SAR, including the repeated results, must be considered to determine compliance and for reporting according to KDB 690783. Repeated measurement is not required when the original highest measured SAR is < 0.80 W/kg; steps 2) through 4) do not apply.

- 3) When the original highest measured SAR is  $\geq 0.80$  W/kg, repeat that measurement once.
- 4) Perform a second repeated measurement only if the ratio of largest to smallest SAR for the original and first repeated measurements is  $> 1.20$  or when the original or repeated measurement is  $\geq 1.45$  W/kg ( $\sim 10\%$  from the 1-g SAR limit).
- 5) Perform a third repeated measurement only if the original, first or second repeated measurement is  $\geq 1.5$  W/kg and the ratio of largest to smallest SAR for the original, first and second repeated measurements is  $> 1.20$ .
- 6) Perform a third repeated measurement only if the original, first or second repeated measurement is  $\geq 1.5$  W/kg and the ratio of largest to smallest SAR for the original, first and second repeated measurements is  $> 1.20$ .

Frequency Band (MHz)	Air Interface	RF Exposure Configuration	Test Position	Repeated SAR (yes/no)	Highest Measured SAR <sub>1-g</sub> (W/kg)	First Repeated	
						Measured SAR <sub>1-g</sub> (W/kg)	Largest to Smallest SAR Ratio
835	GSM850	Standalone	Cheek-Left	no	0.734	n/a	n/a
	WCDMA Band V	Standalone	Cheek-Left	no	0.637	n/a	n/a
1800	LTE Band 4	Standalone	Cheek-Left	no	0.763	n/a	n/a
1900	GSM1900	Standalone	Cheek-Left	no	0.612	n/a	n/a
	WCDMA Band II	Standalone	Cheek-Left	no	0.740	n/a	n/a
2450	2.4GWLAN	Standalone	Cheek-Right	no	0.168	n/a	n/a
2600	LTE Band 7	Standalone	Cheek-Left	no	0.770	n/a	n/a

**Remark:**

1. *Second Repeated Measurement is not required since the ratio of the largest to smallest SAR for the original and first repeated measurement is not  $> 1.20$  or 3 (1-g or 10-g respectively)*

#### 4.6 General description of test procedures

1. The DUT is tested using CMU 200 communications testers as controller unit to set test channels and maximum output power to the DUT, as well as for measuring the conducted peak power.
2. Test positions as described in the tables above are in accordance with the specified test standard.
3. Tests in body position were performed in that configuration, which generates the highest time based averaged output power (see conducted power results).
4. Tests in head position with GSM were performed in voice mode with 1 timeslot unless GPRS/EGPRS/DTM function allows parallel voice and data traffic on 2 or more timeslots.
5. UMTS was tested in RMC mode with 12.2 kbit/s and TPC bits set to 'all 1'.
6. WiFi was tested in 802.11b/g/n mode with 1 Mbit/s and 6 Mbit/s. According to KDB 248227 the SAR testing for 802.11g/n is not required since When the highest reported SAR for DSSS is adjusted by the ratio of OFDM to DSSS specified maximum output power and the adjusted SAR is  $\leq 1.2$  W/kg.
7. Required WiFi test channels were selected according to KDB 248227
8. According to FCC KDB pub 248227 D01, When there are multiple test channels with the same measured maximum output power, the channel closest to mid-band frequency is selected for SAR measurement and when there are multiple test channels with the same measured maximum output power and equal separation from mid-band frequency; for example, high and low channels or two mid-band channels, the higher frequency (number) channel is selected for SAR measurement.
9. According to FCC KDB pub 941225 D06 this device has been tested with 10 mm distance to the phantom for operation in WiFi hot spot mode.
10. Per FCC KDB pub 941225 D06 the edges with antennas within 2.5 cm are required to be evaluated for SAR to cover WiFi hot spot function.
11. According to IEEE 1528 the SAR test shall be performed at middle channel. Testing of top and bottom channel is optional.
12. According to KDB 447498 D01 testing of other required channels within the operating mode of a frequency band is not required when the reported 1-g or 10-g SAR for the mid-band or highest output power channel is:
  - $\leq 0.8$  W/kg or 2.0 W/kg, for 1-g or 10-g respectively, when the transmission band is  $\leq 100$  MHz
  - $\leq 0.6$  W/kg or 1.5 W/kg, for 1-g or 10-g respectively, when the transmission band is between 100 MHz and 200 MHz

- $\leq 0.4$  W/kg or 1.0 W/kg, for 1-g or 10-g respectively, when the transmission band is  $\geq 200$  MHz
- 13. IEEE 1528-2003 require the middle channel to be tested first. This generally applies to wireless devices that are designed to operate in technologies with tight tolerances for maximum output power variations across channels in the band.
- 14. Per KDB648474 D04 require when the reported SAR for a body-worn accessory, measured without a headset connected to the handset, is  $< 1.2$  W/kg.
- 15. Per KDB648474 D04 require when the separation distance required for body-worn accessory testing is larger than or equal to that tested for hotspot mode, using the same wireless mode test configuration for voice and data, such as UMTS, LTE and Wi-Fi, and for the same surface of the phone, the hotspot mode SAR data may be used to support body-worn accessory SAR compliance for that particular configuration (surface)
- 16. 10-g extremity SAR is required only for the surfaces and edges with hotspot mode 1-g SAR  $> 1.2$  W/kg.
- 17. Per KDB648474 D04 require for phablet SAR test considerations. For Smart phones with a display diagonal dimension  $> 15.0$  cm or an overall diagonal dimension  $> 16.0$  cm, When hotspot mode applies, 10-g extremity SAR is required only for the surfaces and edges with hotspot mode 1-g reported SAR  $> 1.2$  W/kg.
- 18. 10-g extremity SAR is required only for the surfaces and edges with hotspot mode 1-g SAR  $> 1.2$  W/kg.

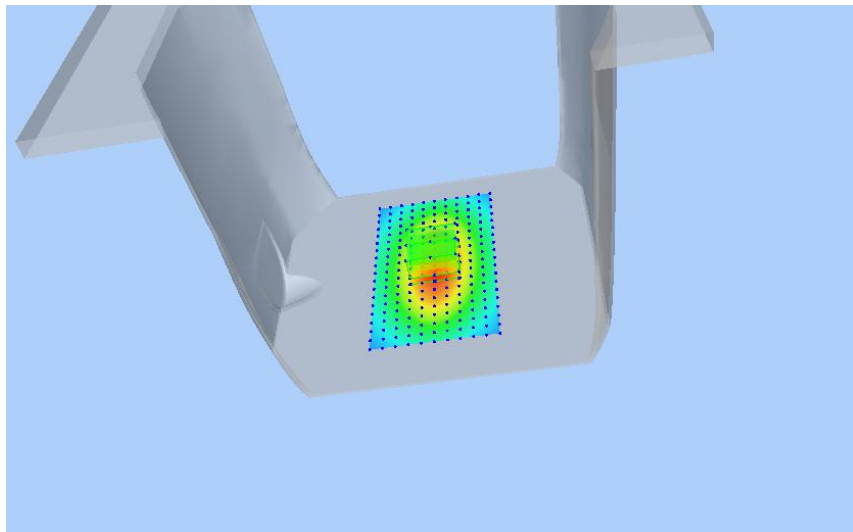
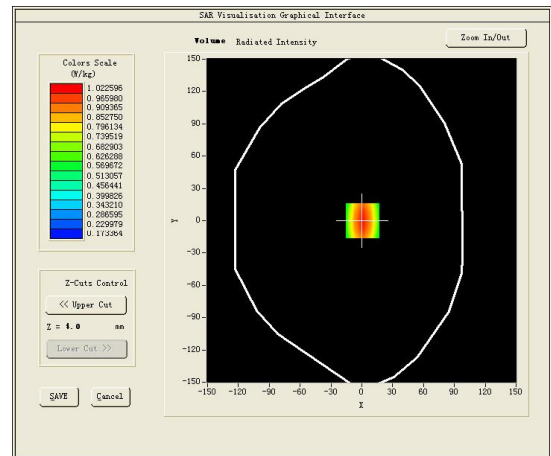
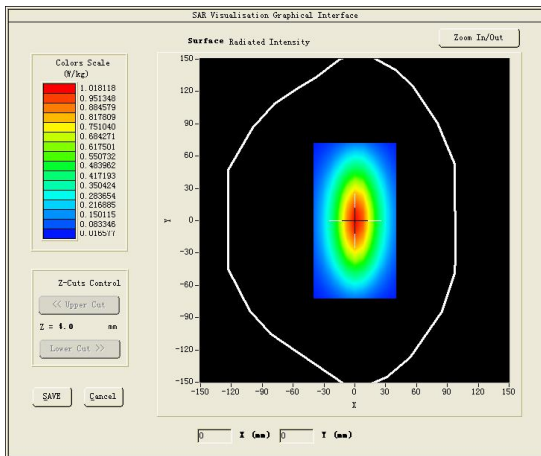
#### **4.7 Measurement Uncertainty (450MHz-6GHz)**

Not required as SAR measurement uncertainty analysis is required in SAR reports only when the highest measured SAR in a frequency band is  $\geq 1.5$  W/kg for 1-g SAR according to KDB865664D01.

### 4.8 System Check Results

Test mode:835MHz(Head)  
 Product Description:Validation  
 Model:Dipole SID835  
 E-Field Probe:SSE2(SN 31/17 EPGO324)  
 Test Date: November 24, 2020

Medium(liquid type)	HSL 850
Frequency (MHz)	835.0000
Relative permittivity (real part)	42.82
Conductivity (S/m)	0.92
Input power	100mW
Crest Factor	1.0
Conversion Factor	1.55
Variation (%)	2.100000
SAR 10g (W/Kg)	0.612431
SAR 1g (W/Kg)	0.901150
<b>SURFACE SAR</b>	<b>VOLUME SAR</b>



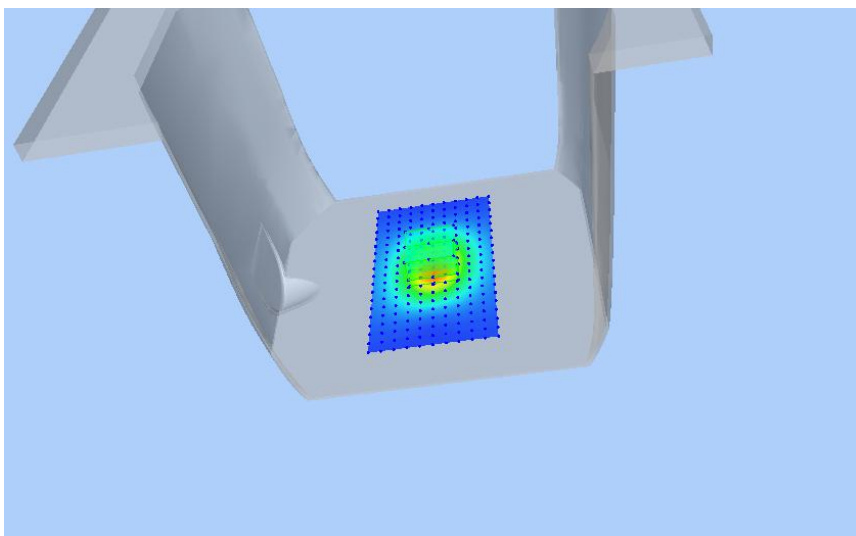
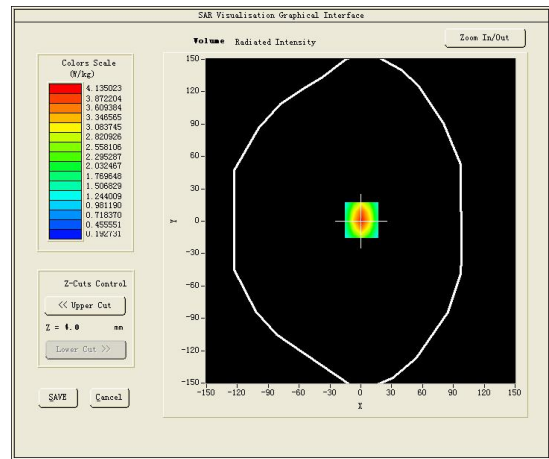
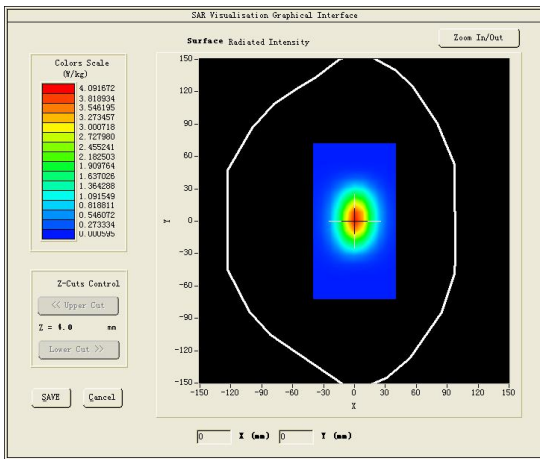


Test mode:1800MHz(Head)  
 Product Description:Validation  
 Model :Dipole SID1800  
 E-Field Probe:SSE2(SN 31/17 EPGO324)  
 Test Date: November 30, 2020

Medium(liquid type)	HSL_1800
Frequency (MHz)	1800.0000
Relative permittivity (real part)	53.45
Conductivity (S/m)	1.56
Input power	100mW
Crest Factor	1.0
Conversion Factor	1.68
Variation (%)	2.010000
SAR 10g (W/Kg)	1.243284
SAR 1g (W/Kg)	3.705458

**SURFACE SAR**

**VOLUME SAR**

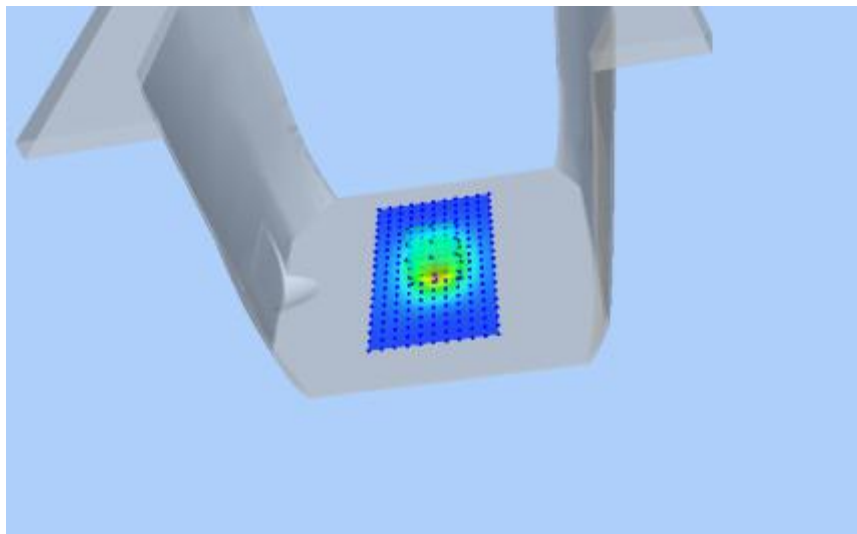
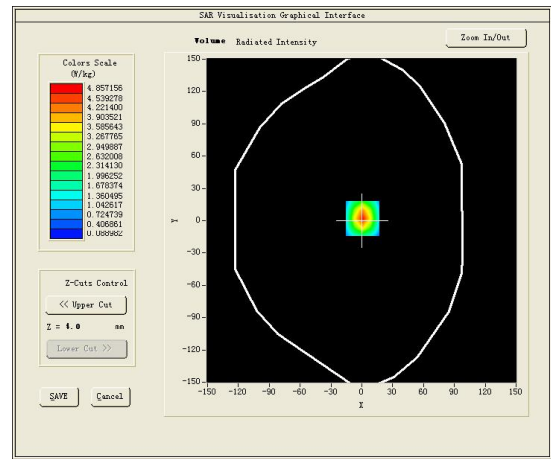
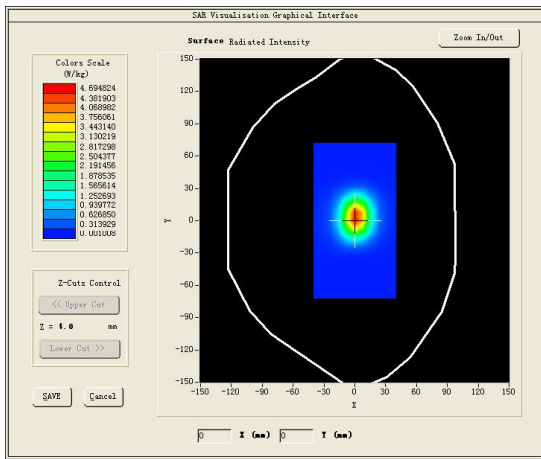


Test mode:1900MHz(Head)  
 Product Description:Validation  
 Model :Dipole SID1900  
 E-Field Probe: SSE2(SN 31/17 EPGO324)  
 Test Date: December 10, 2020

Medium(liquid type)	HSL_1900
Frequency (MHz)	1900.0000
Relative permittivity (real part)	38.56
Conductivity (S/m)	1.37
Input power	100mW
Crest Factor	1.0
Conversion Factor	1.86
Variation (%)	-1.200000
SAR 10g (W/Kg)	2.023152
SAR 1g (W/Kg)	3.901080

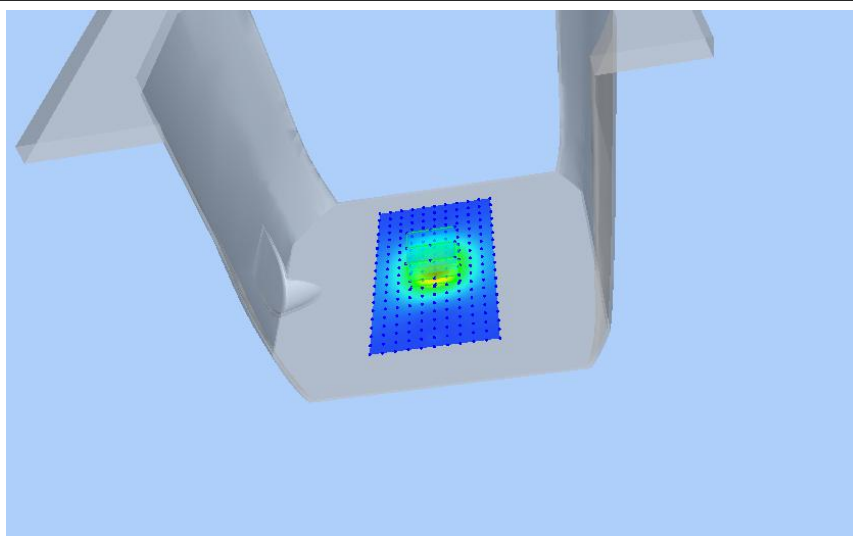
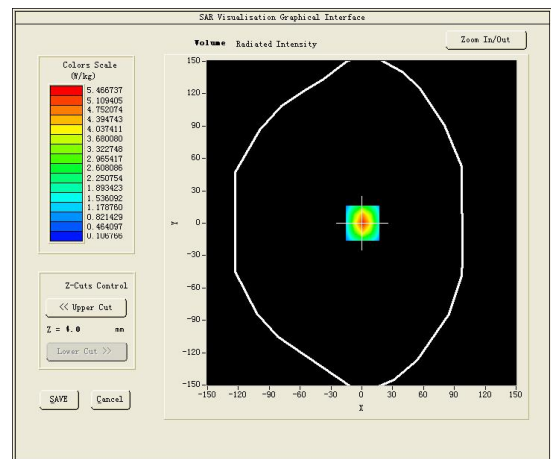
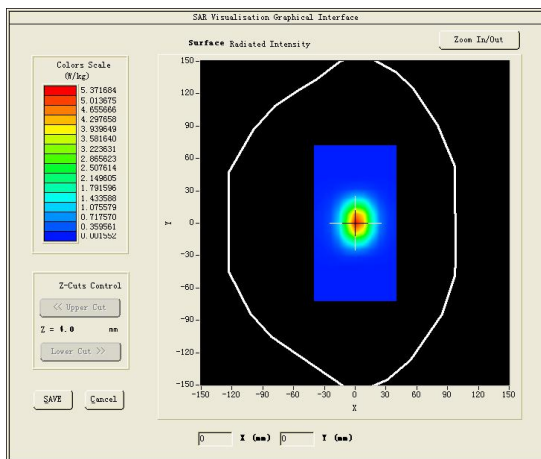
**SURFACE SAR**

**VOLUME SAR**



Test mode:2450MHz(Head)  
 Product Description:Validation  
 Model:Dipole SID2450  
 E-Field Probe:SSE2(SN 31/17 EPGO324)  
 Test Date: December 22, 2020

Medium(liquid type)	HSL_2450
Frequency (MHz)	2450.0000
Relative permittivity (real part)	39.70
Conductivity (S/m)	1.84
Input power	100mW
Crest Factor	1.0
Conversion Factor	1.91
Variation (%)	-0.080000
SAR 10g (W/Kg)	2.501150
SAR 1g (W/Kg)	5.417144
<b>SURFACE SAR</b>	<b>VOLUME SAR</b>

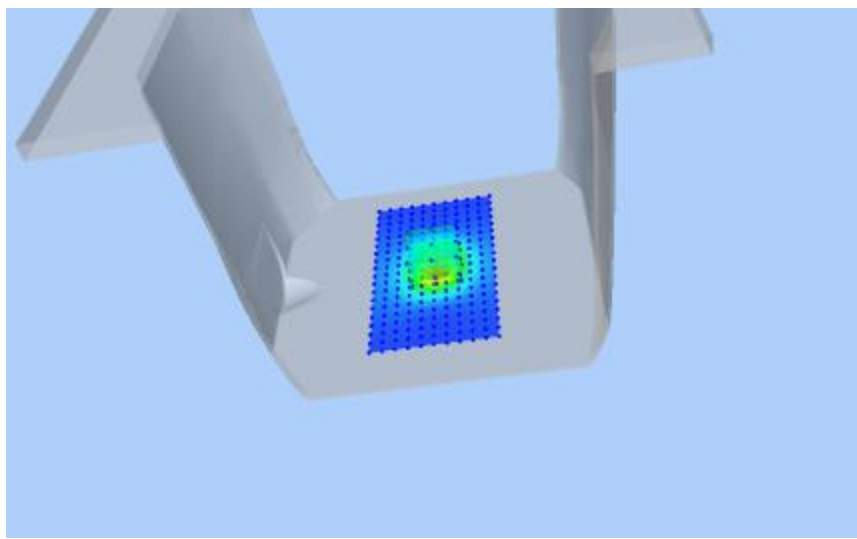
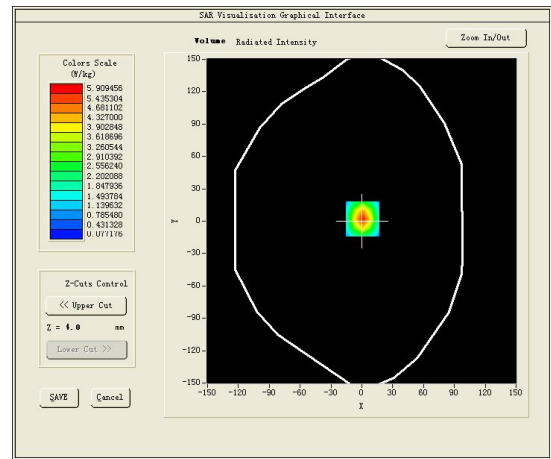
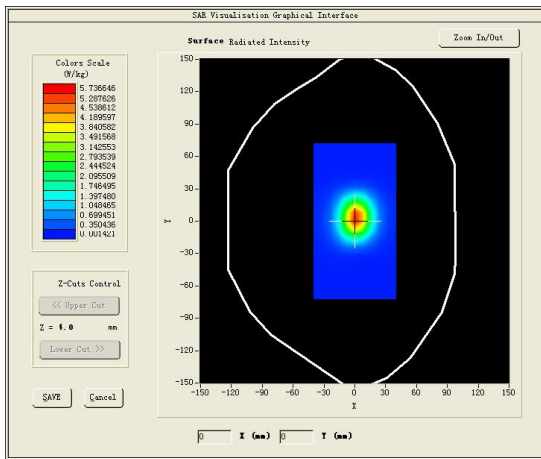


Test mode:2600MHz(Head)  
 Product Description:Validation  
 Model:Dipole SID2600  
 E-Field Probe:SSE2(SN 31/17 EPGO324)  
 Test Date: December 31, 2020

Medium(liquid type)	HSL_2600
Frequency (MHz)	2600.0000
Relative permittivity (real part)	38.43
Conductivity (S/m)	1.92
Input power	100mW
Crest Factor	1.0
Conversion Factor	1.89
Variation (%)	3.240000
SAR 10g (W/Kg)	2.241034
SAR 1g (W/Kg)	5.632264

**SURFACE SAR**

**VOLUME SAR**



### 4.9 SAR Test Graph Results

SAR plots for the highest measured SAR in each exposure configuration, wireless mode and frequency band combination according to FCC KDB 865664 D02;

#1

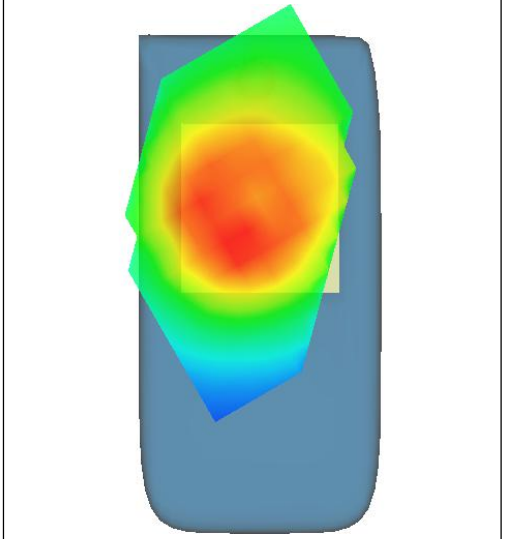
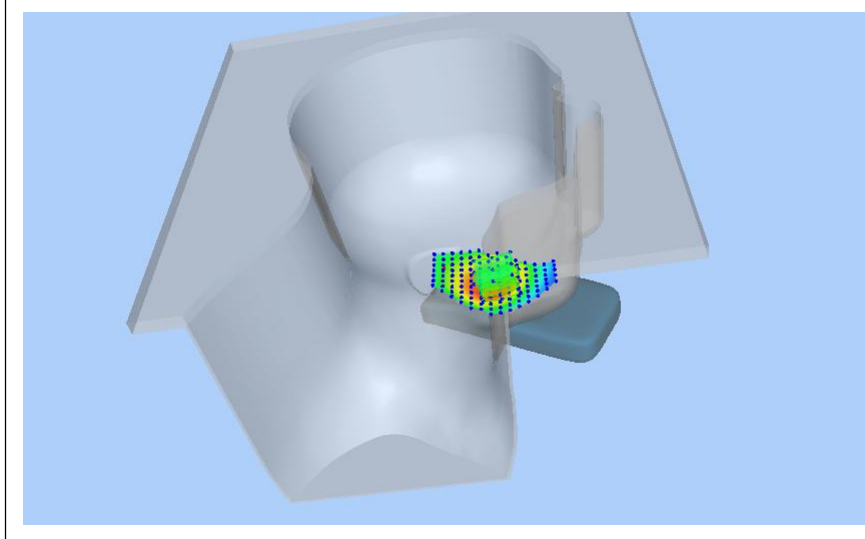
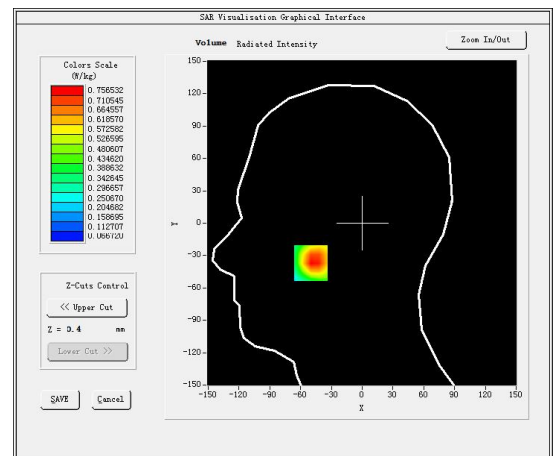
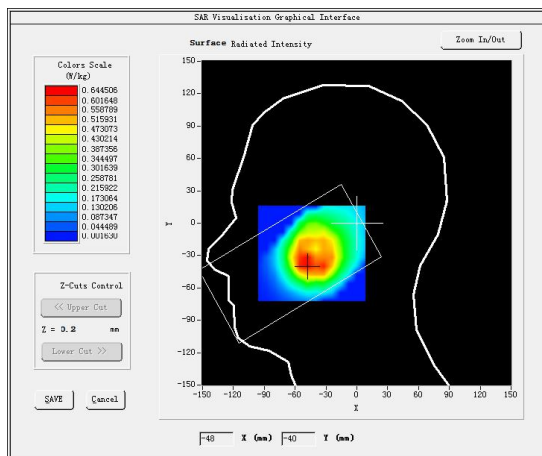
Test Mode:GSM 850MHz,Middle channel(Head Left Cheek)

Product Description: Smart phone

Model: SMOOTH 5.0

Test Date: November 24, 2020

Medium(liquid type)	HSL 850
Frequency (MHz)	824.2000
Relative permittivity (real part)	42.20
Conductivity (S/m)	0.88
E-Field Probe	SN 31/17 EPGO324
Crest Factor	8.0
Conversion Factor	1.55
Sensor	4mm
Area Scan	dx=8mm dy=8mm
Zoom Scan	5x5x7,dx=8mm dy=8mm dz=5mm
Variation (%)	3.390000
SAR 10g (W/Kg)	0.399444
SAR 1g (W/Kg)	0.734305
<b>SURFACE SAR</b>	<b>VOLUME SAR</b>



#2

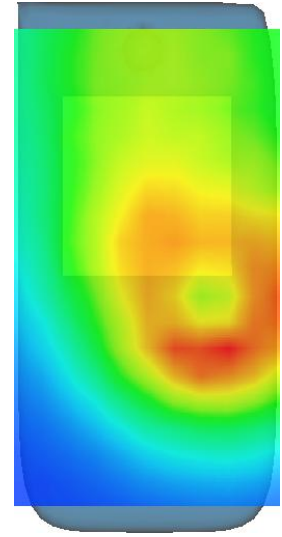
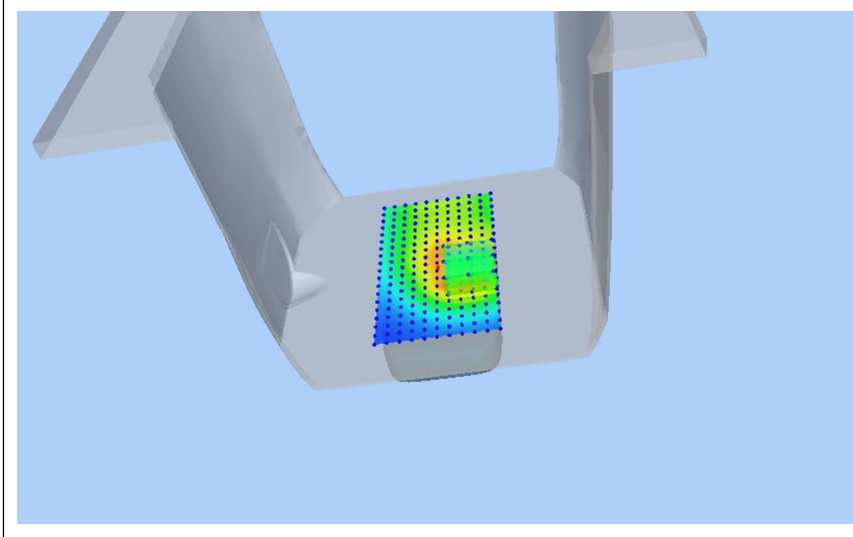
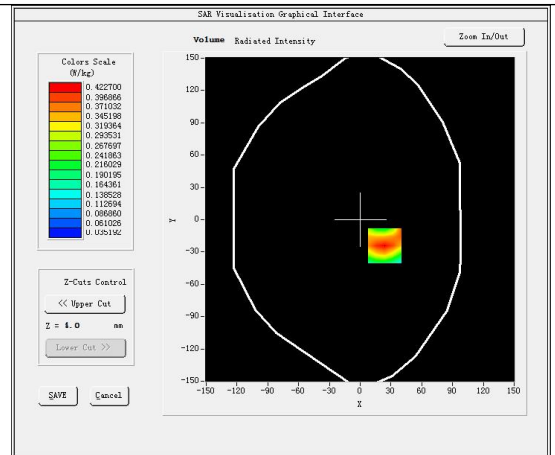
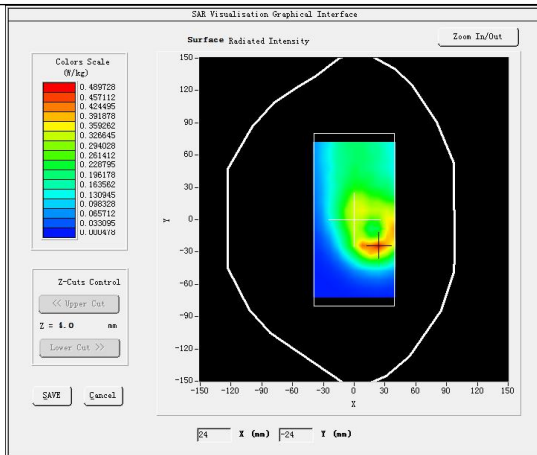
Test Mode: Hotspot GSM850MHz,High channel(Body Rear Side)

Product Description: Smart phone

Model: SMOOTH 5.0

Test Date: November 24, 2020

Medium(liquid type)	MSL 850
Frequency (MHz)	836.6000
Relative permittivity (real part)	41.23
Conductivity (S/m)	0.91
E-Field Probe	SN 31/17 EPG0324
Crest Factor	2.0
Conversion Factor	1.55
Sensor	4mm
Area Scan	dx=8mm dy=8mm
Zoom Scan	5x5x7,dx=8mm dy=8mm dz=5mm
Variation (%)	2.670000
SAR 10g (W/Kg)	0.227637
SAR 1g (W/Kg)	0.398464
SURFACE SAR	VOLUME SAR



#3

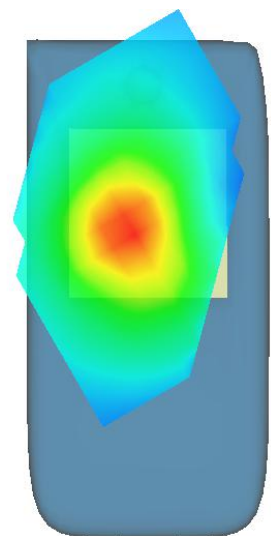
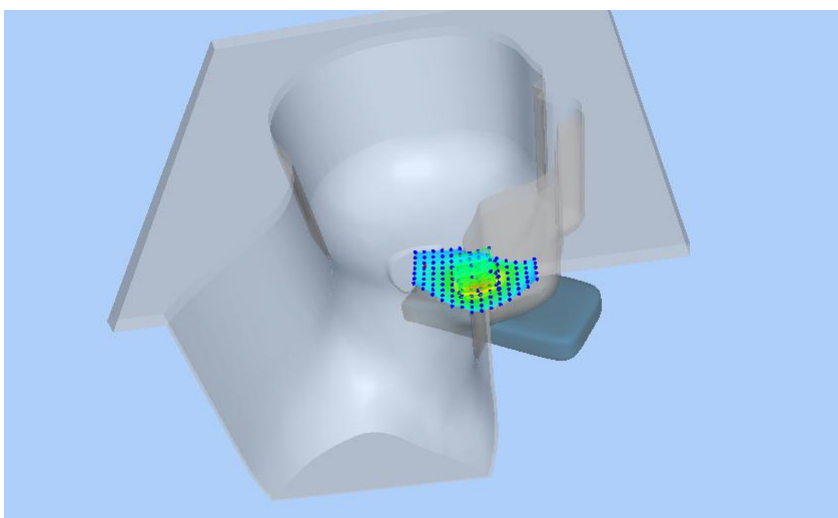
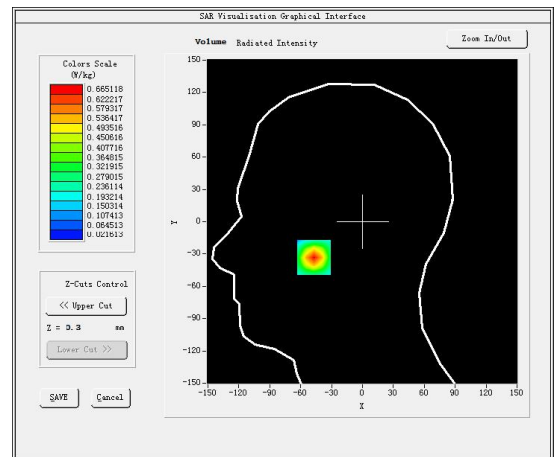
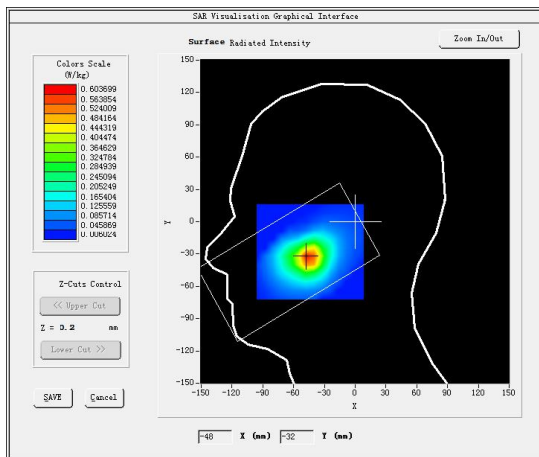
Test Mode:GSM 1900MHz,Middle channel(Head Left Cheek)

Product Description: Smart phone

Model: SMOOTH 5.0

Test Date: December 10, 2020

Medium(liquid type)	HSL 1900
Frequency (MHz)	1880.0000
Relative permittivity (real part)	39.86
Conductivity (S/m)	1.42
E-Field Probe	SN 31/17 EPGO324
Crest Factor	8.0
Conversion Factor	1.86
Sensor	4mm
Area Scan	dx=8mm dy=8mm
Zoom Scan	5x5x7,dx=8mm dy=8mm dz=5mm
Variation (%)	-4.220000
SAR 10g (W/Kg)	0.308291
SAR 1g (W/Kg)	0.611679
<b>SURFACE SAR</b>	<b>VOLUME SAR</b>



#4

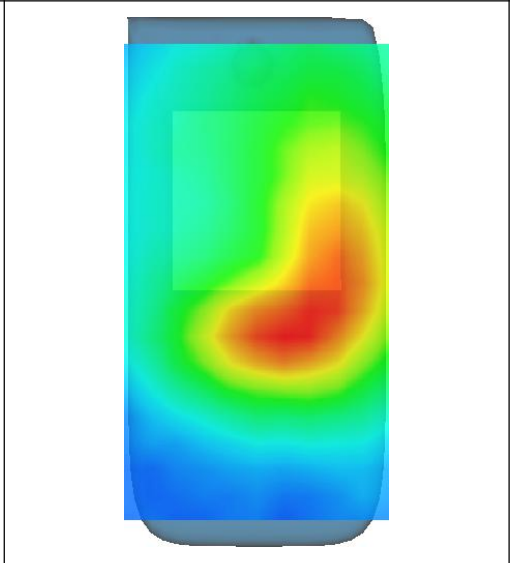
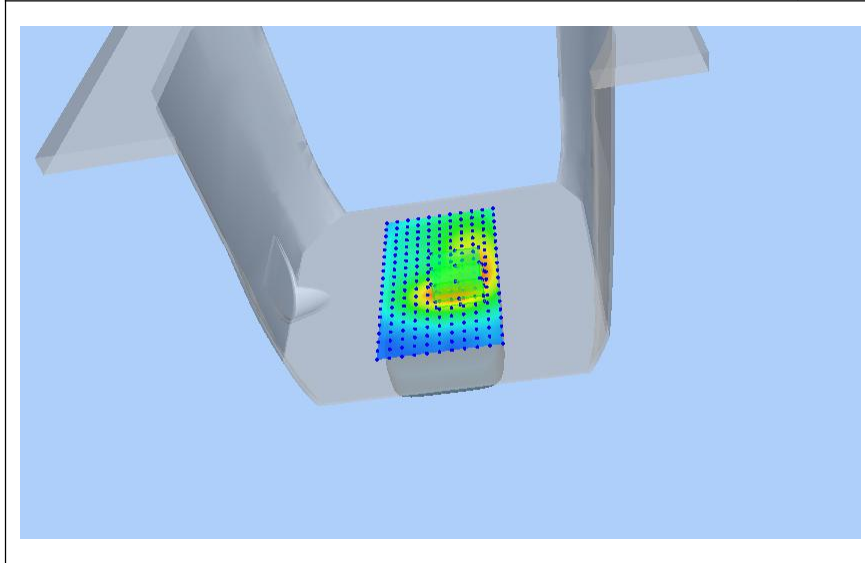
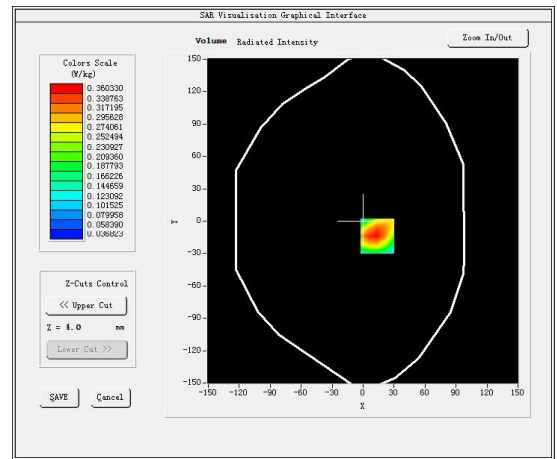
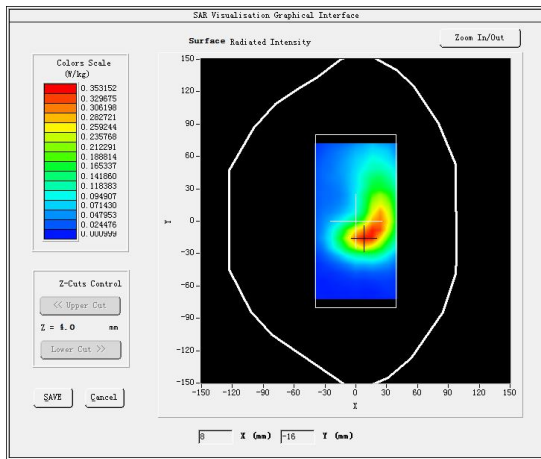
Test Mode: Hotspot GPRS1900MHz,Middle channel(Body Front Side)

Product Description: Smart phone

Model: SMOOTH 5.0

Test Date: December 10, 2020

Medium(liquid type)	MSL_1900
Frequency (MHz)	1880.0000
Relative permittivity (real part)	40.75
Conductivity (S/m)	1.42
E-Field Probe	SN 31/17 EPGO324
Crest Factor	2.0
Conversion Factor	1.86
Sensor	4mm
Area Scan	dx=8mm dy=8mm
Zoom Scan	5x5x7,dx=8mm dy=8mm dz=5mm
Variation (%)	-1.610000
SAR 10g (W/Kg)	0.203299
SAR 1g (W/Kg)	0.343881
<b>SURFACE SAR</b>	<b>VOLUME SAR</b>





#5

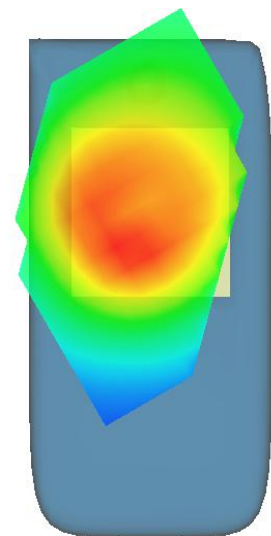
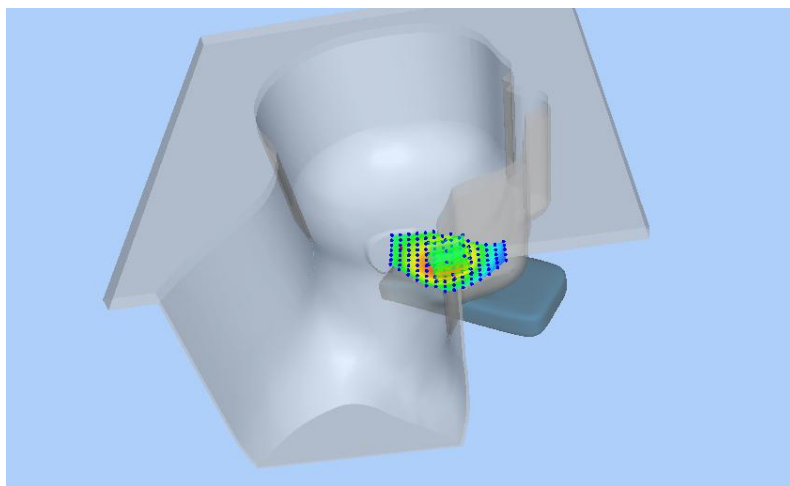
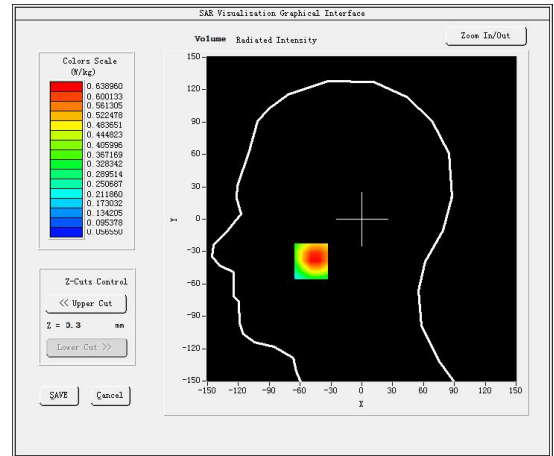
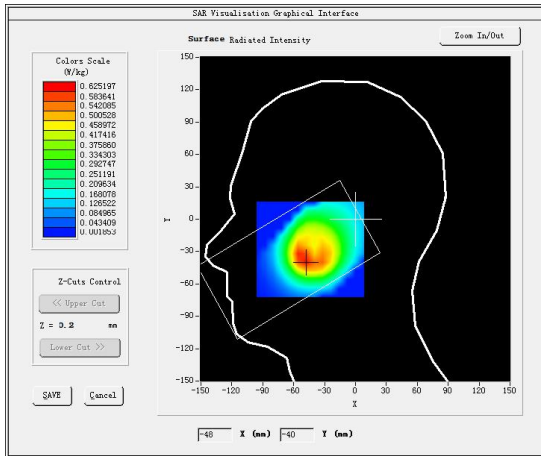
Test Mode:WCDMA Band V,Middle channel(Head Left Cheek)

Product Description: Smart phone

Model: SMOOTH 5.0

Test Date: November 24, 2020

Medium(liquid type)	HSL 850
Frequency (MHz)	826.4000
Relative permittivity (real part)	41.36
Conductivity (S/m)	0.93
E-Field Probe	SN 31/17 EPGO324
Crest Factor	1.0
Conversion Factor	1.55
Sensor	4mm
Area Scan	dx=8mm dy=8mm
Zoom Scan	5x5x7,dx=8mm dy=8mm dz=5mm
Variation (%)	-0.910000
SAR 10g (W/Kg)	0.359017
SAR 1g (W/Kg)	0.637086
<b>SURFACE SAR</b>	<b>VOLUME SAR</b>



#6

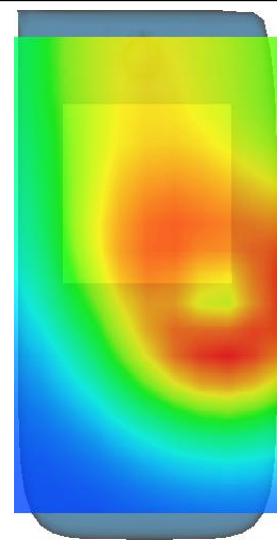
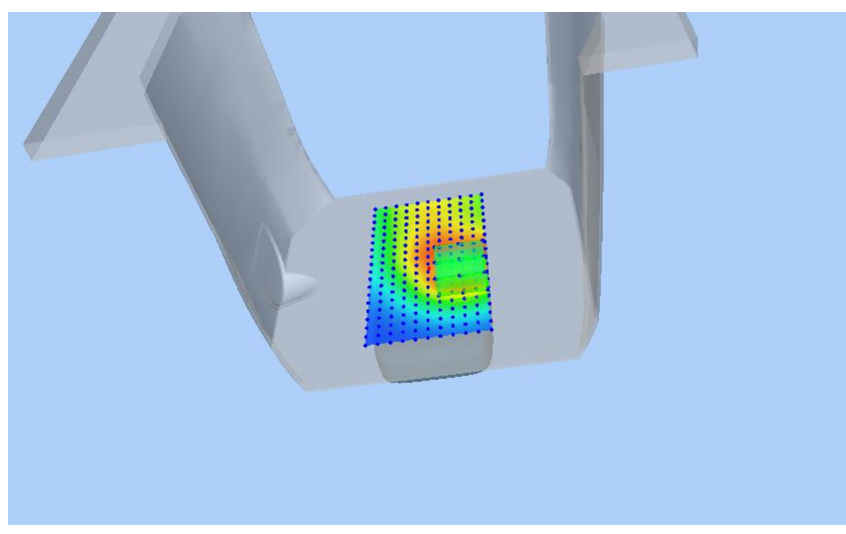
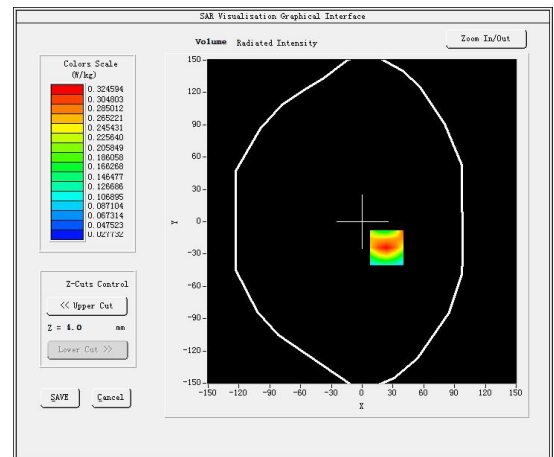
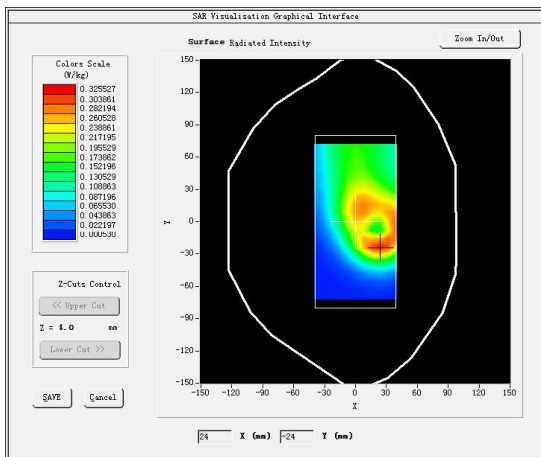
Test Mode: Hotspot WCDMA Band V, Middle channel (Body Rear Side)

Product Description: Smart phone

Model: SMOOTH 5.0

Test Date: November 24, 2020

Medium (liquid type)	MSL_850
Frequency (MHz)	826.4000
Relative permittivity (real part)	41.62
Conductivity (S/m)	0.87
E-Field Probe	SN 31/17 EPG0324
Crest Factor	1.0
Conversion Factor	1.55
Sensor	4mm
Area Scan	dx=8mm dy=8mm
Zoom Scan	5x5x7, dx=8mm dy=8mm dz=5mm
Variation (%)	0.530000
SAR 10g (W/Kg)	0.171899
SAR 1g (W/Kg)	0.303695
<b>SURFACE SAR</b>	<b>VOLUME SAR</b>



#7

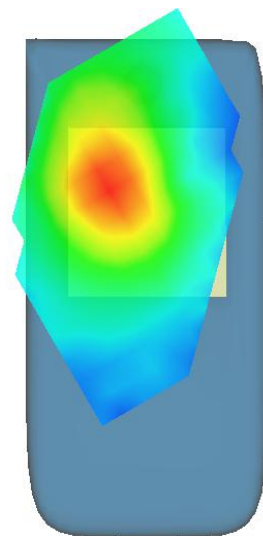
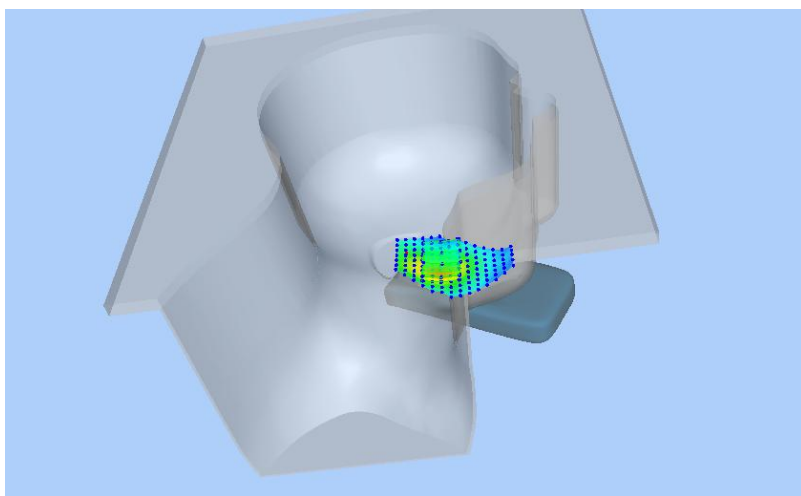
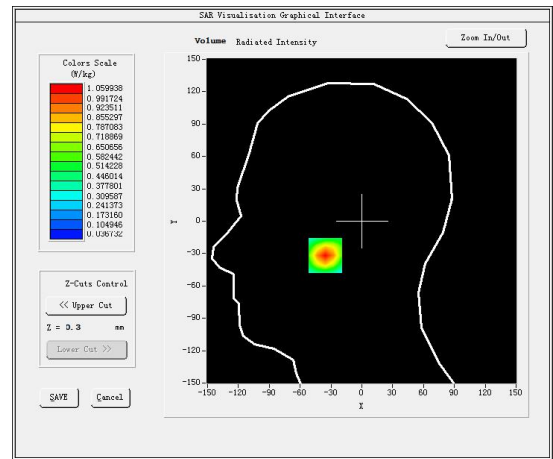
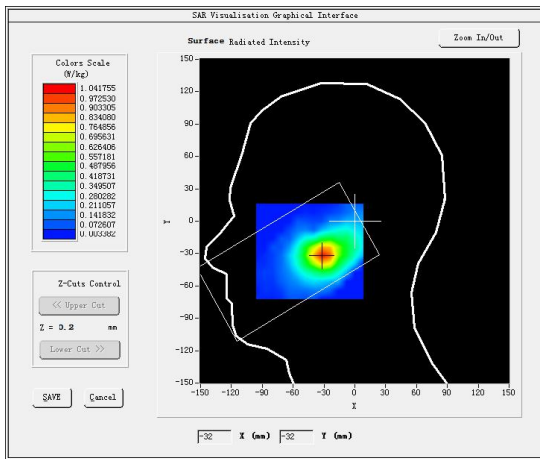
Test Mode:WCDMA Band II,Middle channel(Head Left Cheek)

Product Description: Smart phone

Model: SMOOTH 5.0

Test Date: December 10, 2020

Medium(liquid type)	HSL 1900
Frequency (MHz)	1880.0000
Relative permittivity (real part)	40.22
Conductivity (S/m)	1.38
E-Field Probe	SN 31/17 EPGO324
Crest Factor	1.0
Conversion Factor	1.86
Sensor	4mm
Area Scan	dx=8mm dy=8mm
Zoom Scan	5x5x7,dx=8mm dy=8mm dz=5mm
Variation (%)	-1.250000
SAR 10g (W/Kg)	0.528268
SAR 1g (W/Kg)	0.700068
<b>SURFACE SAR</b>	<b>VOLUME SAR</b>



#8

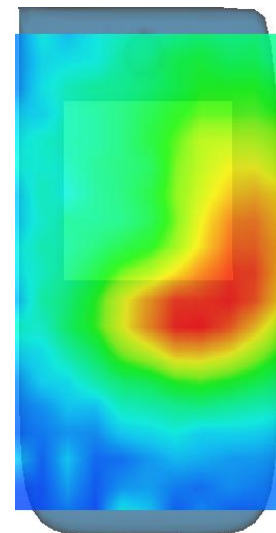
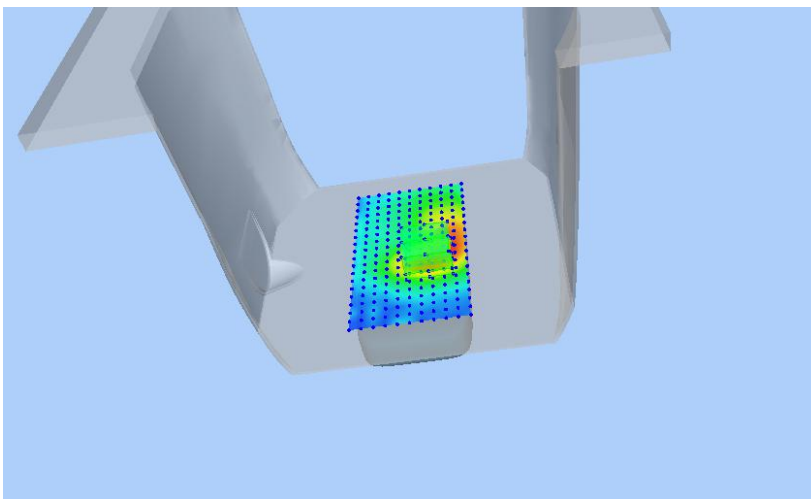
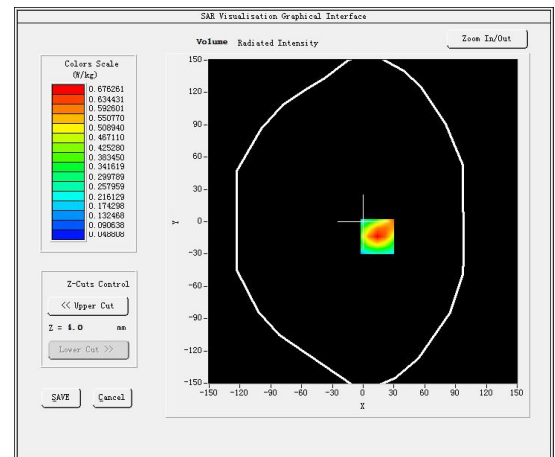
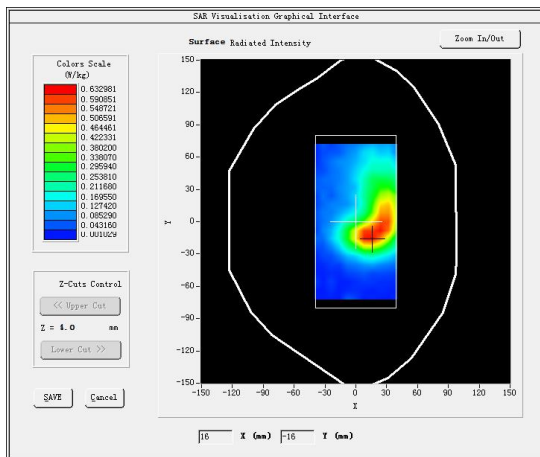
Test Mode: Hotspot WCDMA Band II, Middle channel (Body Rear Side)

Product Description: Smart phone

Model: SMOOTH 5.0

Test Date: December 10, 2020

Medium (liquid type)	MSL 1900
Frequency (MHz)	1880.0000
Relative permittivity (real part)	40.45
Conductivity (S/m)	1.37
E-Field Probe	SN 31/17 EPGO324
Crest Factor	1.0
Conversion Factor	1.86
Sensor	4mm
Area Scan	dx=8mm dy=8mm
Zoom Scan	5x5x7, dx=8mm dy=8mm dz=5mm
Variation (%)	-0.150000
SAR 10g (W/Kg)	0.361267
SAR 1g (W/Kg)	0.637273
<b>SURFACE SAR</b>	<b>VOLUME SAR</b>



#9

Test Mode: LTE Band 4, 1RB,Low channel(Head Left Cheek)

Product Description: Smart phone

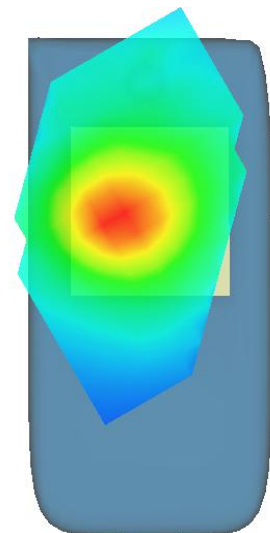
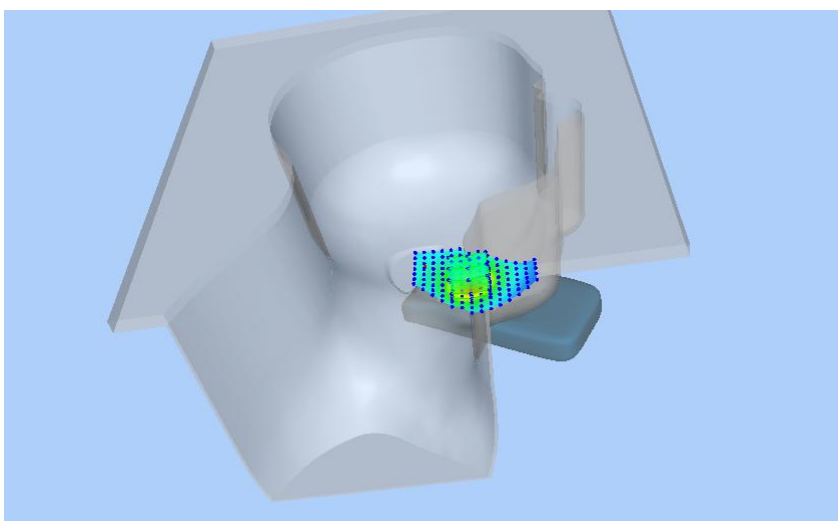
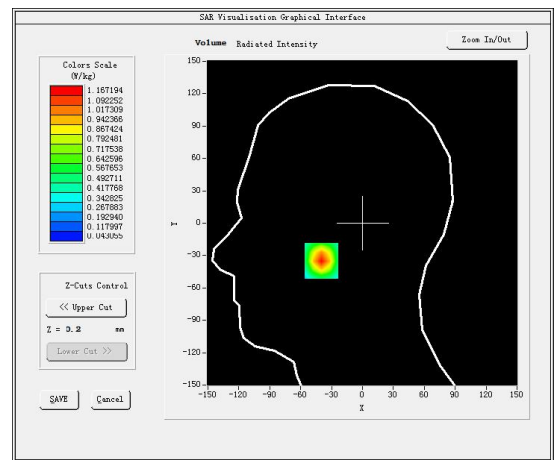
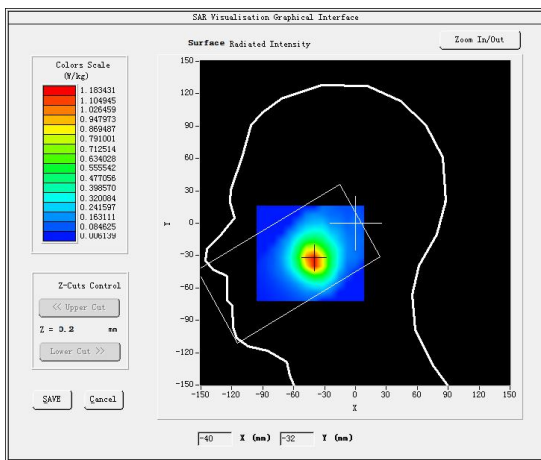
Model: SMOOTH 5.0

Test Date: November 30, 2020

Medium(liquid type)	MSL_1800
Frequency (MHz)	1732.5000
Relative permittivity (real part)	52.92
Conductivity (S/m)	1.50
E-Field Probe	SN 31/17 EPGO324
Crest Factor	1.0
Conversion Factor	1.68
Sensor	4mm
Area Scan	dx=8mm dy=8mm
Zoom Scan	5x5x7,dx=8mm dy=8mm dz=5mm
Variation (%)	0.190000
SAR 10g (W/Kg)	0.566890
SAR 1g (W/Kg)	0.750246

**SURFACE SAR**

**VOLUME SAR**



#10

Test Mode: Hotspot LTE Band 4, 1RB, Low channel(Body Rear Side)

Product Description: Smart phone

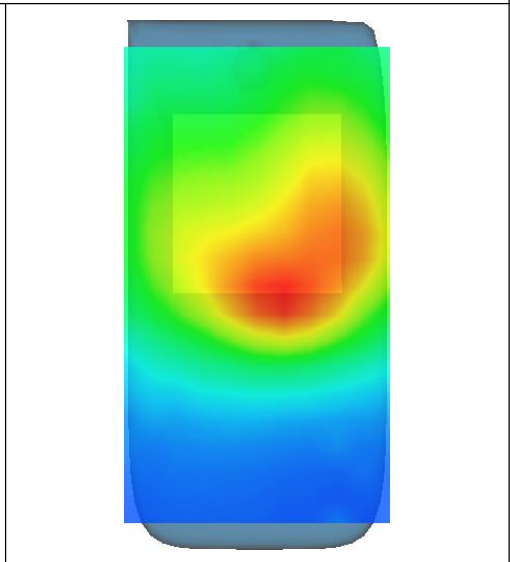
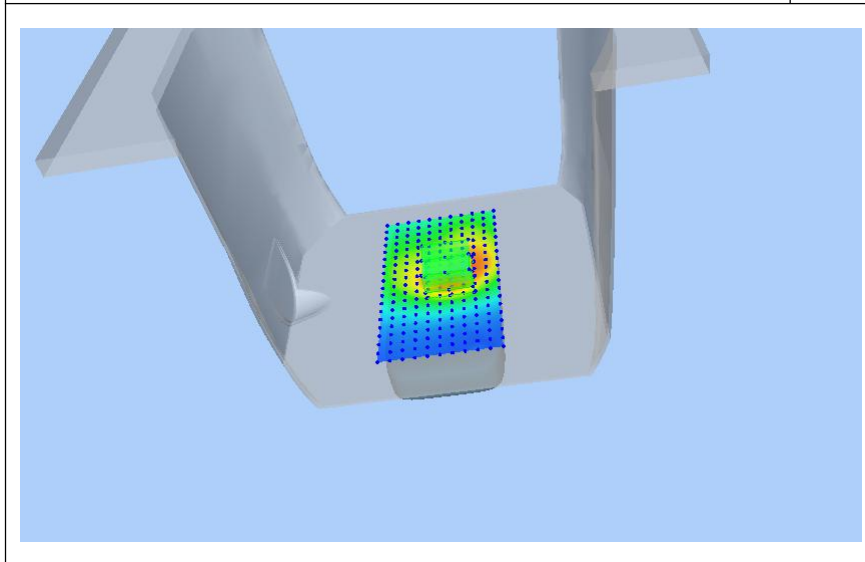
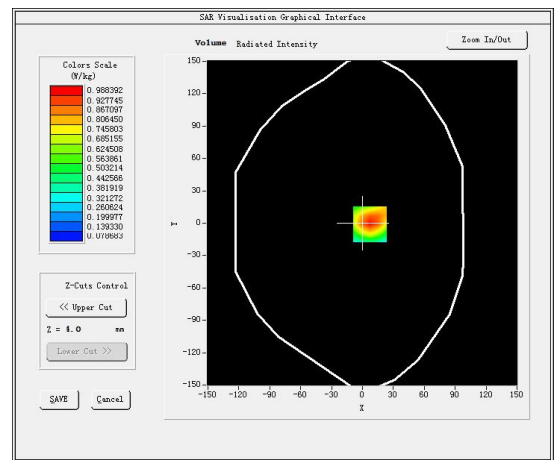
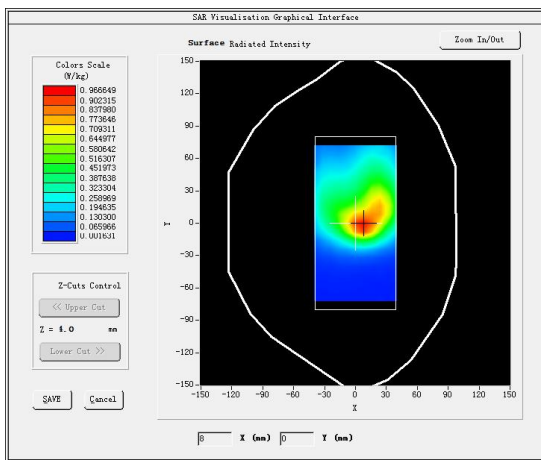
Model: SMOOTH 5.0

Test Date: November 30, 2020

Medium(liquid type)	MSL_1800
Frequency (MHz)	1732.5000
Relative permittivity (real part)	52.92
Conductivity (S/m)	1.50
E-Field Probe	SN 31/17 EPGO324
Crest Factor	1.0
Conversion Factor	1.68
Sensor	4mm
Area Scan	dx=8mm dy=8mm
Zoom Scan	5x5x7,dx=8mm dy=8mm dz=5mm
Variation (%)	-0.950000
SAR 10g (W/Kg)	0.550069
SAR 1g (W/Kg)	0.721478

**SURFACE SAR**

**VOLUME SAR**



#11

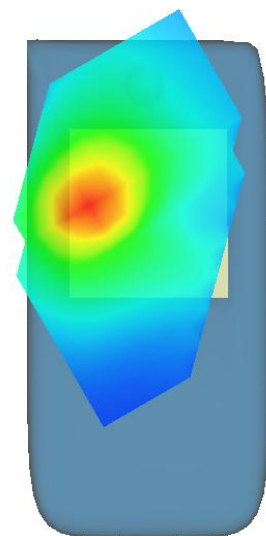
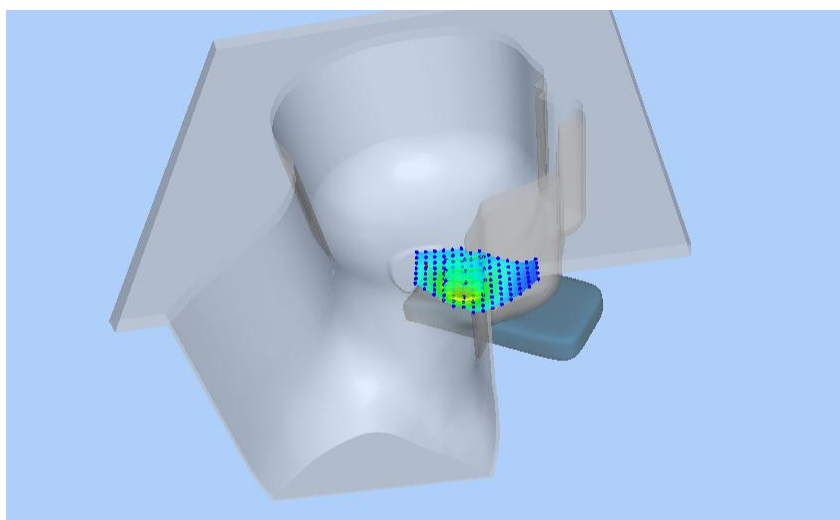
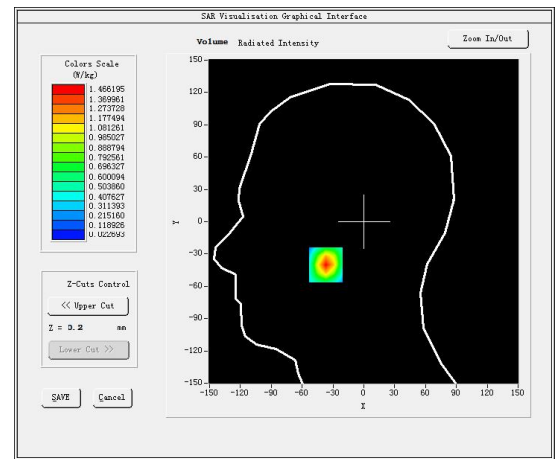
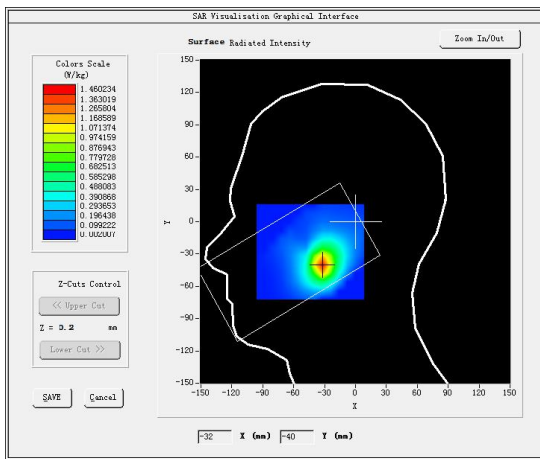
Test Mode: LTE Band 7, 1RB, Middle channel(Head Left Cheek)

Product Description: Smart phone

Model: SMOOTH 5.0

Test Date: December 31, 2020

Medium(liquid type)	HSL 2600
Frequency (MHz)	2535.0000
Relative permittivity (real part)	39.62
Conductivity (S/m)	1.93
E-Field Probe	SN 31/17 EPGO324
Crest Factor	1.0
Conversion Factor	1.89
Sensor	4mm
Area Scan	dx=8mm dy=8mm
Zoom Scan	5x5x7,dx=8mm dy=8mm dz=5mm
Variation (%)	0.220000
SAR 10g (W/Kg)	0.545260
SAR 1g (W/Kg)	0.721482
<b>SURFACE SAR</b>	<b>VOLUME SAR</b>



#12

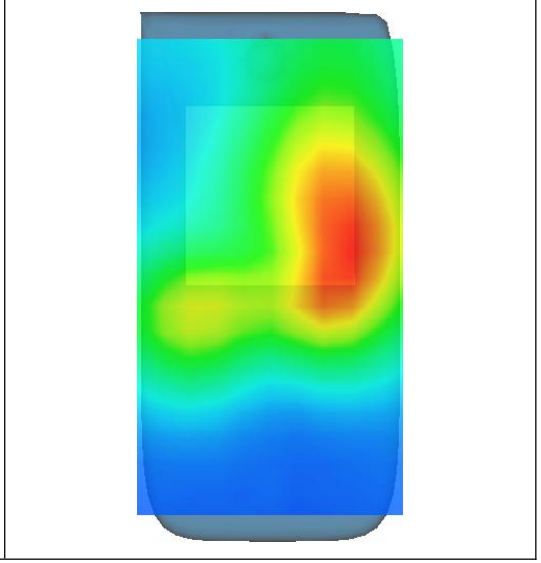
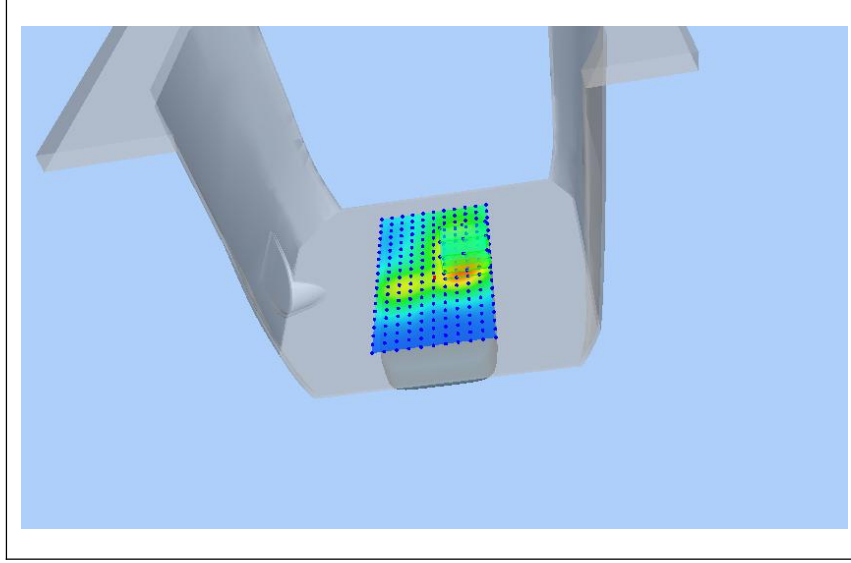
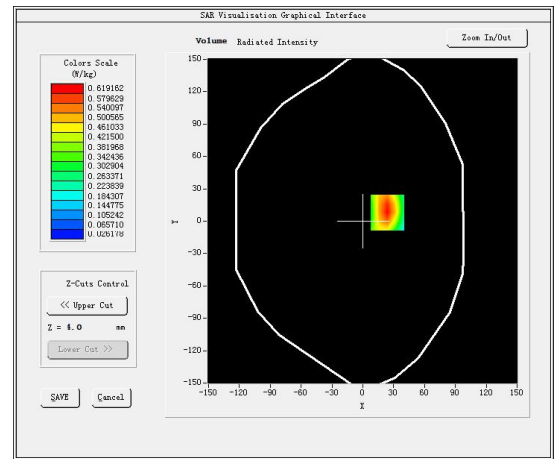
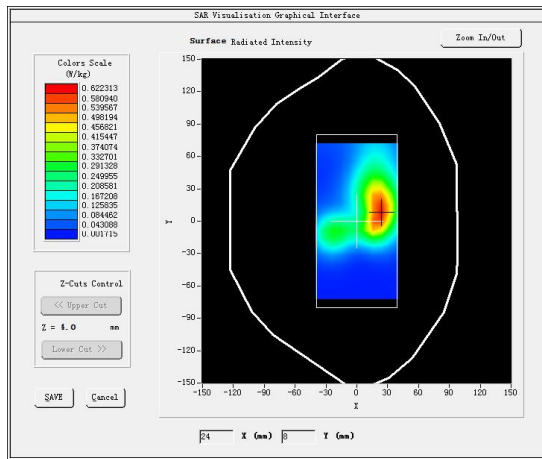
Test Mode: Hotspot LTE Band 7, 1RB, Middle channel(Body Rear Side)

Product Description: Smart phone

Model: SMOOTH 5.0

Test Date: December 31, 2020

Medium(liquid type)	MSL 2600
Frequency (MHz)	2535.0000
Relative permittivity (real part)	39.49
Conductivity (S/m)	1.92
E-Field Probe	SN 31/17 EPGO324
Crest Factor	1.0
Conversion Factor	1.89
Sensor	4mm
Area Scan	dx=8mm dy=8mm
Zoom Scan	5x5x7,dx=8mm dy=8mm dz=5mm
Variation (%)	-1.140000
SAR 10g (W/Kg)	0.316624
SAR 1g (W/Kg)	0.583668
<b>SURFACE SAR</b>	<b>VOLUME SAR</b>





#13

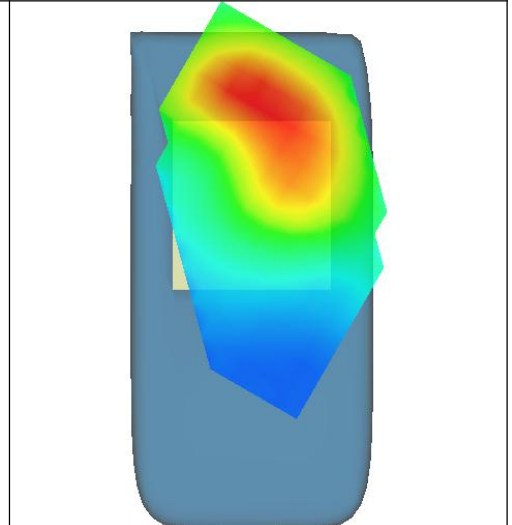
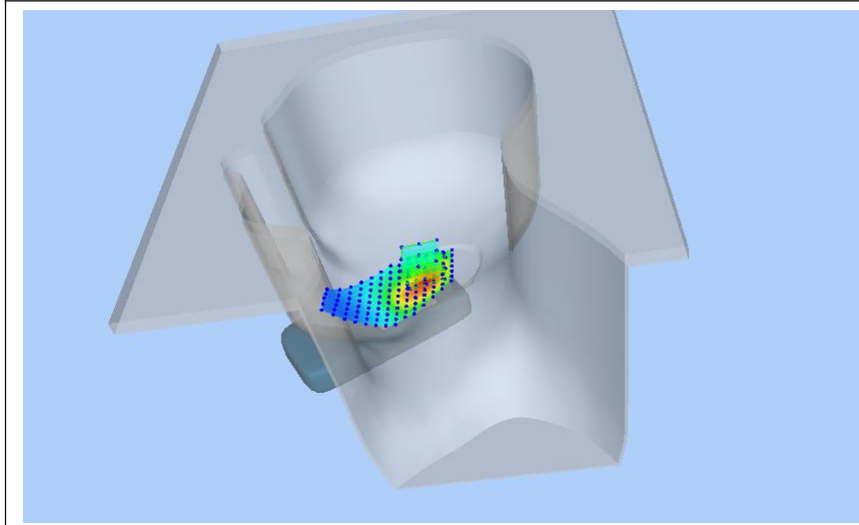
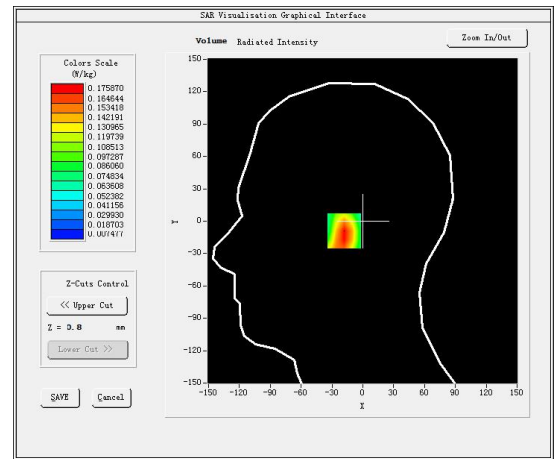
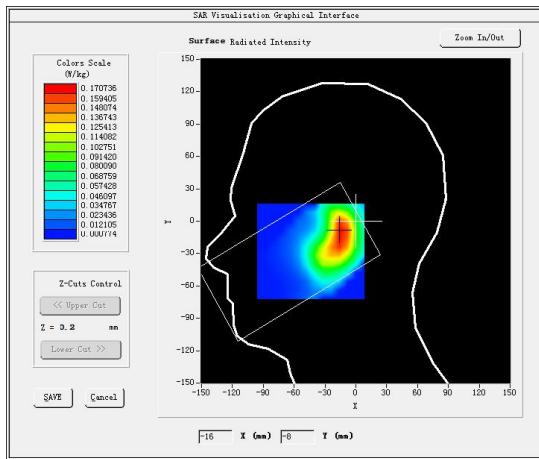
Test Mode:802.11b(WiFi2.4G), Middle channel (Head Right Cheek)

Product Description: Smart phone

Model: SMOOTH 5.0

Test Date: December 22, 2020

Medium(liquid type)	HSL 2450
Frequency (MHz)	2412.0000
Relative permittivity (real part)	39.67
Conductivity (S/m)	1.81
E-Field Probe	SN 31/17 EPGO324
Crest Factor	1.0
Conversion Factor	1.91
Sensor	4mm
Area Scan	dx=8mm dy=8mm
Zoom Scan	5x5x7,dx=8mm dy=8mm dz=5mm
Variation (%)	0.920000
SAR 10g (W/Kg)	0.088318
SAR 1g (W/Kg)	0.167744
<b>SURFACE SAR</b>	<b>VOLUME SAR</b>



#14

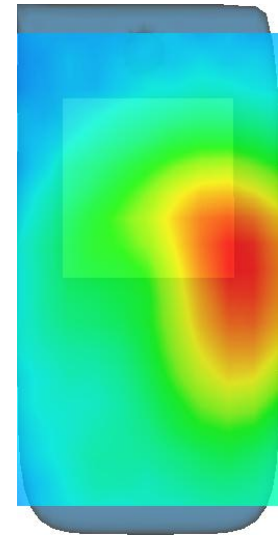
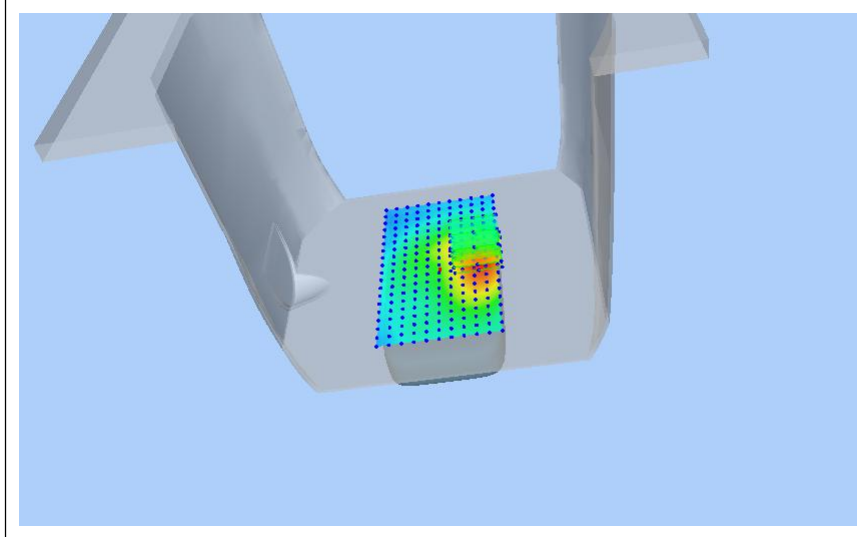
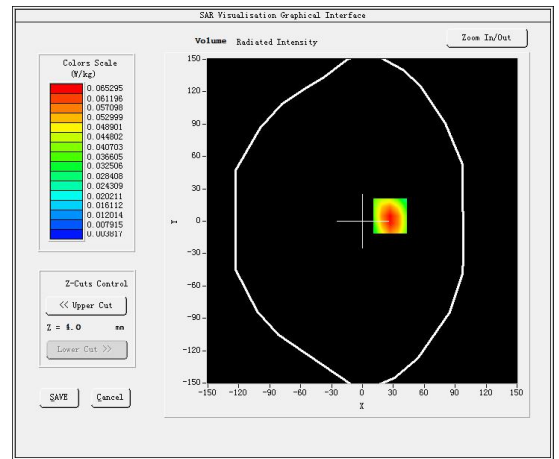
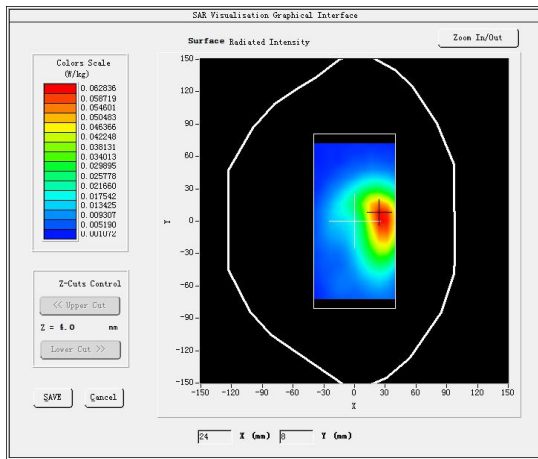
Test Mode: Hotspot 802.11b(WiFi2.4G), Middle channel (Body Rear Side)

Product Description: Smart phone

Model: SMOOTH 5.0

Test Date: December 22, 2020

Medium(liquid type)	MSL 2450
Frequency (MHz)	2412.0000
Relative permittivity (real part)	38.92
Conductivity (S/m)	1.83
E-Field Probe	SN 31/17 EPGO324
Crest Factor	1.0
Conversion Factor	1.91
Sensor	4mm
Area Scan	dx=8mm dy=8mm
Zoom Scan	5x5x7,dx=8mm dy=8mm dz=5mm
Variation (%)	2.330000
SAR 10g (W/Kg)	0.035426
SAR 1g (W/Kg)	0.062083
<b>SURFACE SAR</b>	<b>VOLUME SAR</b>



## 5. ALIBRATION CERTIFICATES

### 5.1 Probe-EPGO324 Calibration Certificate



## COMOSAR E-Field Probe Calibration Report

Ref : ACR.281.2.18.SATU.A

**SHENZHEN LCS COMPLIANCE TESTING  
LABORATORY LTD.**  
1F., XINGYUAN INDUSTRIAL PARK, TONGDA ROAD,  
BAO'AN BLVD  
BAO'AN DISTRICT, SHENZHEN, GUANGDONG, CHINA  
**MVG COMOSAR DOSIMETRIC E-FIELD PROBE**  
SERIAL NO.: SN 31/17 EPGO324

Calibrated at MVG US  
2105 Barrett Park Dr. - Kennesaw, GA 30144



**Calibration Date: 10/07/2020**

*Summary:*

This document presents the method and results from an accredited COMOSAR Dosimetric E-Field Probe calibration performed in MVG USA using the CALISAR / CALIBAIR test bench, for use with a COMOSAR system only. All calibration results are traceable to national metrology institutions.



COMOSAR E-FIELD PROBE CALIBRATION REPORT

Ref: ACR.281.2.18.SATU.A

	<i>Name</i>	<i>Function</i>	<i>Date</i>	<i>Signature</i>
<i>Prepared by :</i>	Jérôme LUC	Product Manager	10/7/2020	<i>JS</i>
<i>Checked by :</i>	Jérôme LUC	Product Manager	10/7/2020	<i>JS</i>
<i>Approved by :</i>	Kim RUTKOWSKI	Quality Manager	10/7/2020	<i>Kim Rutkowski</i>

	<i>Customer Name</i>
<i>Distribution :</i>	Shenzhen LCS Compliance Testing Laboratory Ltd.

<i>Issue</i>	<i>Date</i>	<i>Modifications</i>
A	10/7/2020	Initial release

*This document shall not be reproduced, except in full or in part, without the written approval of MVG.  
The information contained herein is to be used only for the purpose for which it is submitted and is not to be released in whole or part without written approval of MVG.*





## COMOSAR E-FIELD PROBE CALIBRATION REPORT

Ref: ACR.281.2.18.SATU.A

## TABLE OF CONTENTS

1	Device Under Test .....	4
2	Product Description .....	4
2.1	General Information .....	4
3	Measurement Method .....	4
3.1	Linearity .....	4
3.2	Sensitivity .....	5
3.3	Lower Detection Limit .....	5
3.4	Isotropy .....	5
3.5	Boundary Effect .....	5
4	Measurement Uncertainty .....	5
5	Calibration Measurement Results .....	6
5.1	Sensitivity in air .....	6
5.2	Linearity .....	7
5.3	Sensitivity in liquid .....	7
5.4	Isotropy .....	8
6	List of Equipment .....	10

Page: 3/10

*This document shall not be reproduced, except in full or in part, without the written approval of MVG.  
The information contained herein is to be used only for the purpose for which it is submitted and is not to be released in whole or part without written approval of MVG.*



## COMOSAR E-FIELD PROBE CALIBRATION REPORT

Ref: ACR.281.2.18.SATU.A

## 1 DEVICE UNDER TEST

Device Under Test	
Device Type	COMOSAR DOSIMETRIC E FIELD PROBE
Manufacturer	MVG
Model	SSE2
Serial Number	SN 31/17 EPGO324
Product Condition (new / used)	New
Frequency Range of Probe	0.15 GHz-6GHz
Resistance of Three Dipoles at Connector	Dipole 1: R1=0.189 MΩ Dipole 2: R2=0.203 MΩ Dipole 3: R3=0.218 MΩ

A yearly calibration interval is recommended.

## 2 PRODUCT DESCRIPTION

### 2.1 GENERAL INFORMATION

MVG's COMOSAR E field Probes are built in accordance to the IEEE 1528, OET 65 Bulletin C and CEI/IEC 62209 standards.



**Figure 1** – MVG COMOSAR Dosimetric E field Dipole

Probe Length	330 mm
Length of Individual Dipoles	2 mm
Maximum external diameter	8 mm
Probe Tip External Diameter	2.5 mm
Distance between dipoles / probe extremity	1 mm

## 3 MEASUREMENT METHOD

The IEEE 1528, OET 65 Bulletin C, CENELEC EN50361 and CEI/IEC 62209 standards provide recommended practices for the probe calibrations, including the performance characteristics of interest and methods by which to assess their affect. All calibrations / measurements performed meet the fore mentioned standards.

### 3.1 LINEARITY

The evaluation of the linearity was done in free space using the waveguide, performing a power sweep to cover the SAR range 0.01W/kg to 100W/kg.

Page: 4/10

*This document shall not be reproduced, except in full or in part, without the written approval of MVG.  
The information contained herein is to be used only for the purpose for which it is submitted and is not to be released in whole or part without written approval of MVG.*