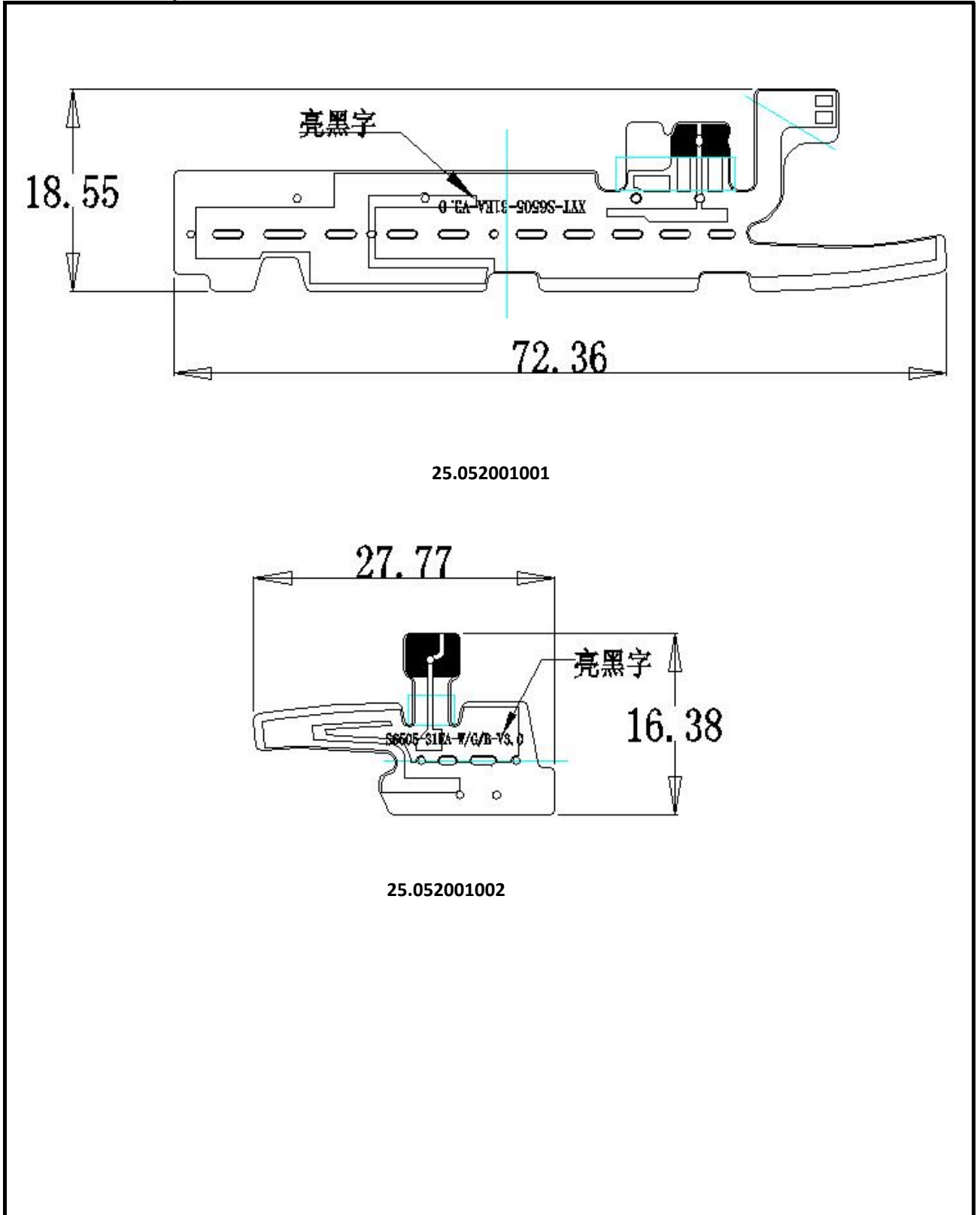


Antenna specification

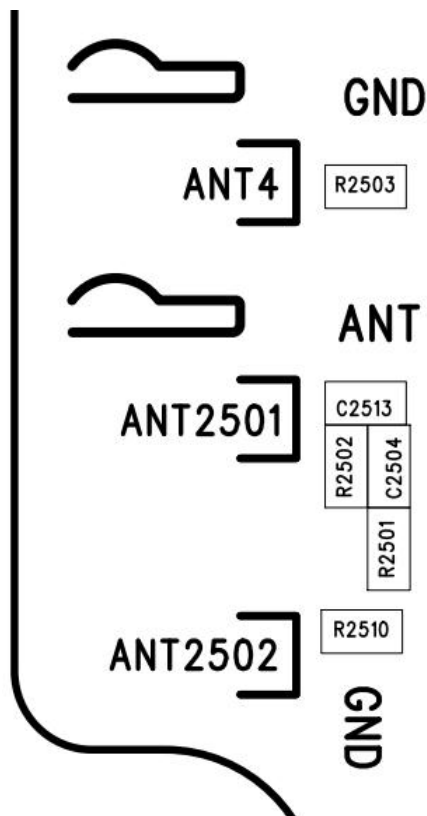
2D Product blueprint (DWG)



项目调试简介:

日期: 2022/10/28

机型	S6510						
板型	整版						
天线情况		频段		天线材料	天线形式	设计区域	小板匹配有改动
	主天线	2G	B2/B4/ B5/B8	FPC	PIFA	手机底部	
		3G	B1/B2/ B5/B8				
		4G					
	分集天线	4G	有			手机顶部	
	其他天线	BT/WI FI	2.45G HZ			手机顶部	右边三合一天线
GPS		1.5754 2GHZ	手机顶部				
样机状态	样机			环境处理	有		



C2513	不下料
C2504	不下料
R2502	0欧电阻
R2501	0欧电阻
R2503	0欧电阻
R2510	0欧电阻

Laboratory test results

Band	Free space test			
2G				
	Channel	1	38	124
GSM900	Gain	0.2	0.2	0.2
	TRP	32.87	32.52	31.81
	TIS	-103.46	-103.56	-104.18
	Channel	512	698	885
DCS1800	Gain	0.2	0.2	0.2
	TRP	31.12	32.16	32.75
	TIS	-106.33	-105.77	-106.23
	Channel	128	190	251
GSM850	Gain	0.2	0.2	0.21
	TRP	31.65	31.87	32.34
	TIS	-105.36	-104.92	-104.05
	Channel	512	660	810
PCS1900	Gain	0.2	0.2	0.2
	TRP	32.34	33.08	33.02
	TIS	-104.5	-103.56	-104.17
3G	Channel	10562	10700	10838
B1	Gain	0.2	0.2	0.2
	TRP	26.33	25.53	25.78
	TIS	-105.5	-105.19	-105.57
	Channel	9662	9800	9938
B2	Gain	0.2	0.2	0.2
	TRP	23.95	24.49	24.97
	TIS	-103.37	-104	-103.38
	Channel	4132	4185	4233
B5	Gain	0.2	0.2	0.2
	TRP	21.19	21.03	21.32
	TIS	-105.51	-104.03	-105.08
	Channel	2712	2788	2863
B8	Gain	0.2	0.2	0.2
	TRP	22.49	22.85	22.99
	TIS	-103.87	-104.82	-103.89
WIFI	Channel	1	7	13
	Gain	0	0	0
	TIS	-80.87	-80.46	-80.65
	Channel	0	39	78
BT	Gain	0	0	0
	TIS	-80.35	-80.64	-80.29

CN

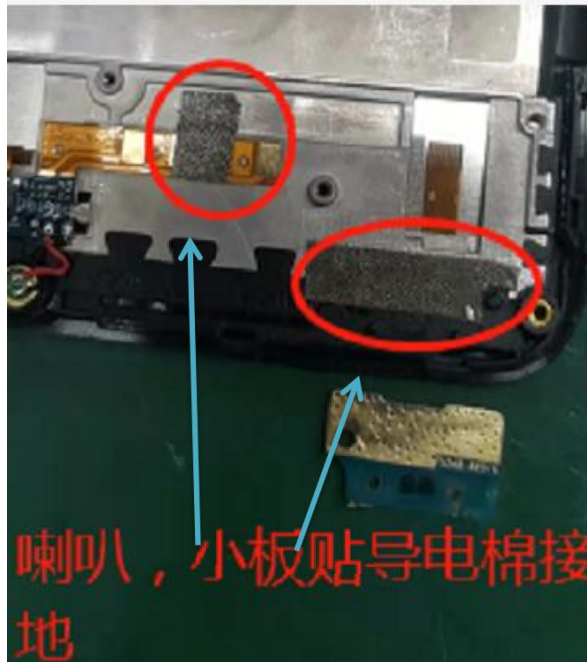
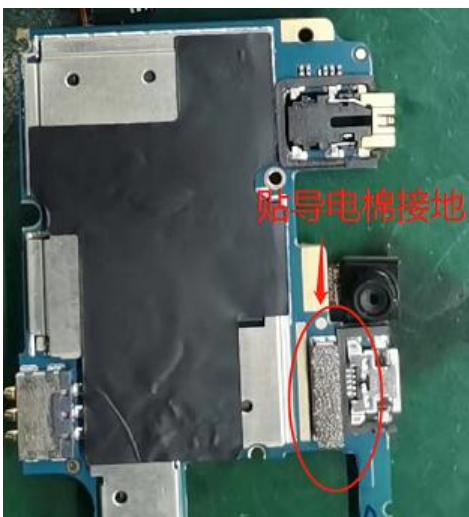
TIS

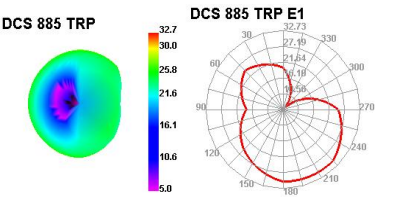
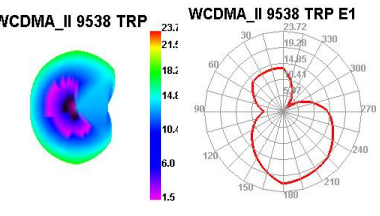
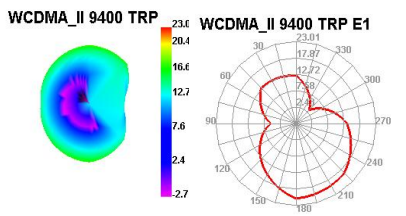
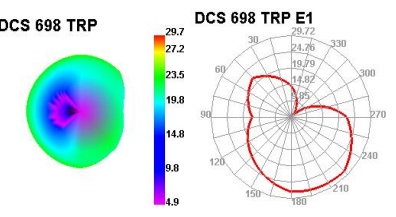
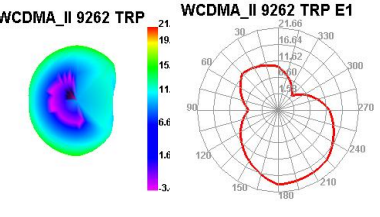
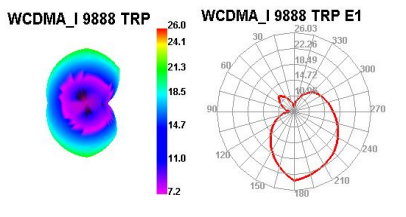
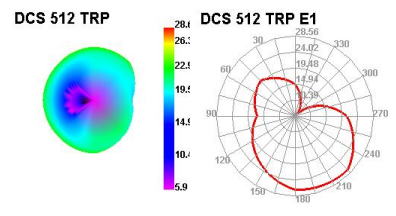
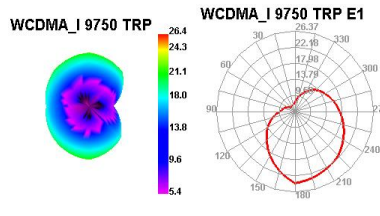
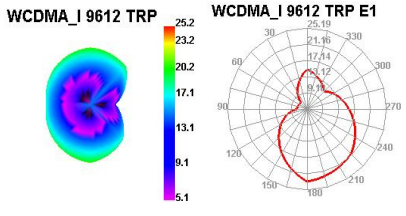
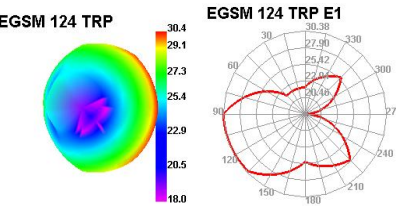
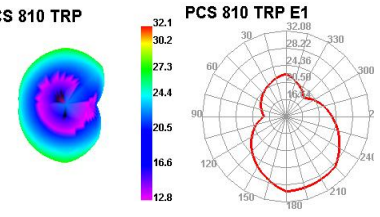
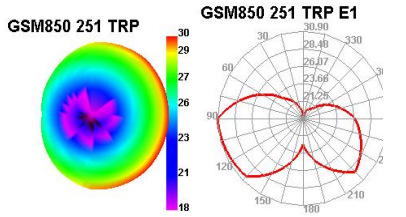
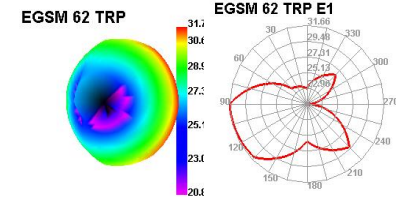
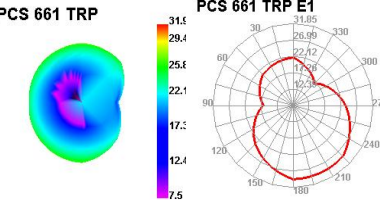
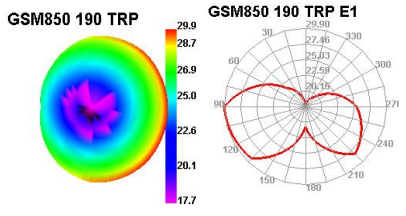
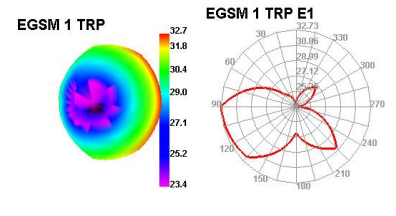
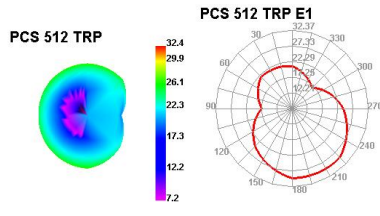
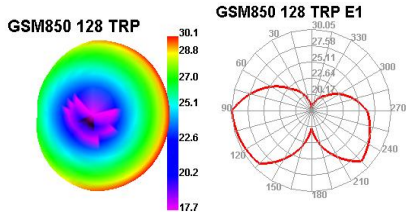
GPS			
	36.76	-138	

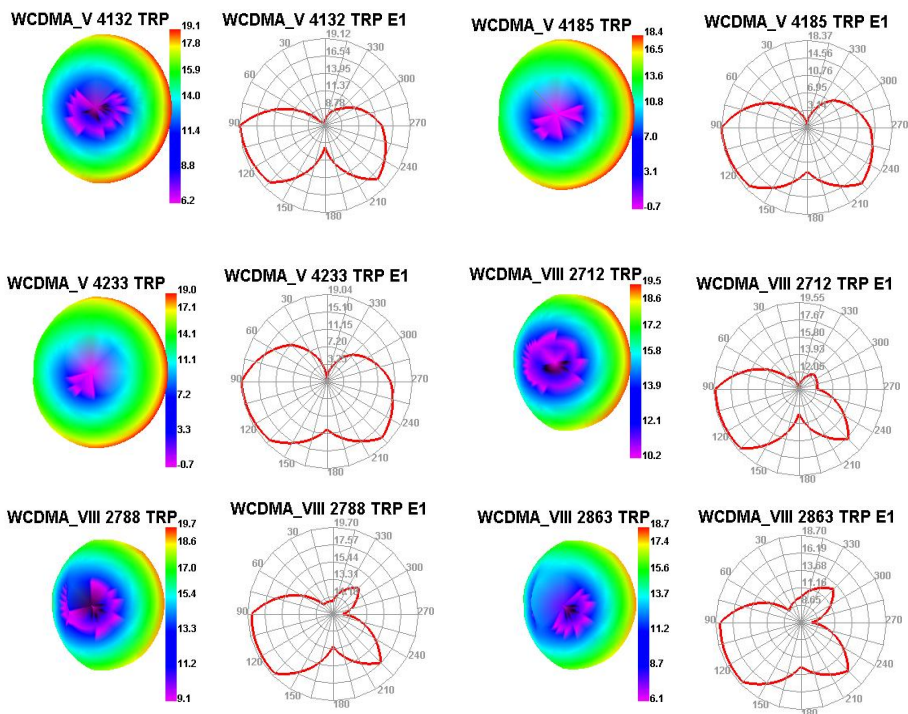
Effect Picture :



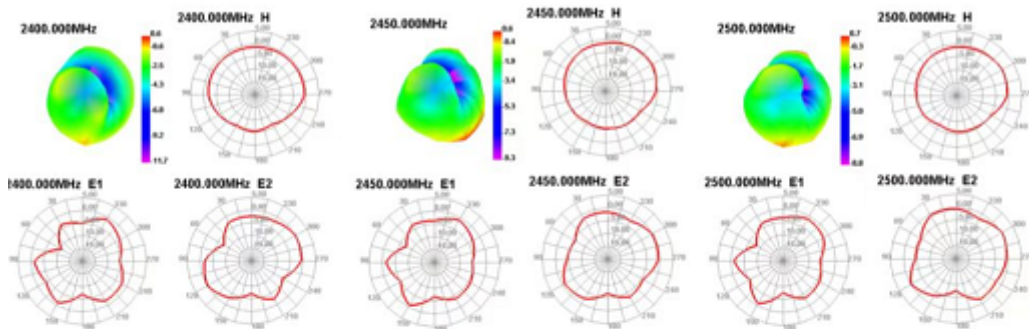
Antenna environment treatment:







BT / WIFI



Xinyuantong Electronic Technology (Shenzhen) Co., LTD

CPK Report

客户	天锐祥通讯设备有限公司		Vendor(供应商)		信原通电子科技	
产品名称	S6510		Inspected(确认者)		梁坤荣	
Tool Number(模号)			Inches/MM(英寸/毫米)		mm	
Cavity(穴号)			材质名称		FPC	
Revision(版本)	A/0		Date(日期)		2022.10.28	
	主天线		三合一天线			
n. Designator(尺寸序号)						
Nominal(公称尺寸)	72.36	18.55	27.77	16.38		
+ Tolerance(正公差)	0.10	0.10	0.10	0.10	0.10	0.10
- Tolerance(负公差)	-0.10	-0.10	-0.10	-0.10	-0.10	-0.10
Upper Limit(规格上限)	72.46	18.65	27.87	16.48	0.10	0.10
Lower Limit(规格下限)	72.26	18.45	27.67	16.28	-0.10	-0.10
1	72.340	18.530	27.750	16.360	(0.020)	(0.020)
2	72.410	18.600	27.820	16.430	0.050	0.050
3	72.350	18.540	27.760	16.370	(0.010)	(0.010)
4	72.380	18.570	27.790	16.400	0.020	0.020
5	72.320	18.510	27.730	16.340	(0.040)	(0.040)
6	72.350	18.540	27.760	16.370	(0.010)	(0.010)
7	72.330	18.520	27.740	16.350	(0.030)	(0.030)
8	72.410	18.600	27.820	16.430	0.050	0.050
9	72.380	18.570	27.790	16.400	0.020	0.020
10	72.340	18.530	27.750	16.360	(0.020)	(0.020)
11	72.340	18.530	27.750	16.360	(0.020)	(0.020)
12	72.390	18.580	27.800	16.410	0.030	0.030
13	72.440	18.630	27.850	16.460	0.080	0.080
14	72.290	18.480	27.700	16.310	(0.070)	(0.070)
15	72.350	18.540	27.760	16.370	(0.010)	(0.010)
16	72.370	18.560	27.780	16.390	0.010	0.010
17	72.310	18.500	27.720	16.330	(0.050)	(0.050)
18	72.400	18.590	27.810	16.420	0.040	0.040
19	72.370	18.560	27.780	16.390	0.010	0.010
20	72.390	18.580	27.800	16.410	0.030	0.030
21	72.400	18.590	27.810	16.420	0.040	0.040
22	72.380	18.570	27.790	16.400	0.020	0.020
23	72.340	18.530	27.750	16.360	(0.020)	(0.020)
24	72.390	18.580	27.800	16.410	0.030	0.030
25	72.390	18.580	27.800	16.410	0.030	0.030
26	72.340	18.530	27.750	16.360	(0.020)	(0.020)
27	72.310	18.500	27.720	16.330	(0.050)	(0.050)
28	72.390	18.580	27.800	16.410	0.030	0.030
29	72.350	18.540	27.760	16.370	(0.010)	(0.010)
30	72.380	18.570	27.790	16.400	0.020	0.020
31	72.340	18.530	27.750	16.360	(0.020)	(0.020)
32	72.380	18.570	27.790	16.400	0.020	0.020
33	72.330	18.520	27.740	16.350	(0.030)	(0.030)
34	72.340	18.530	27.750	16.360	(0.020)	(0.020)
35	72.390	18.580	27.800	16.410	0.030	0.030
MAX.	72.44	18.63	27.85	16.46	0.08	0.08
MIN.	72.29	18.48	27.70	16.31	-0.07	-0.07
AVERAGE	72.36	18.55	27.77	16.38	0.00	0.00
STDEV	0.03	0.03	0.03	0.03	0.03	0.03
CP	0.99	0.99	0.99	0.99	0.99	0.99
Cpk	0.96	0.96	0.96	0.96	0.96	0.96
TOOLING(测量工具)	二次元	二次元				

审核：梁坤荣

制表：张磊

日期：2022.10.28