



SIEMIC, INC.

Accessing global markets

Title: EMC Test Report for Mobile phone
Main Model: Q50 BESTE
Serial Model: N/A
To: FCC Part 15 Subpart B Class B: 2012, ANSI C63.4:2009

Report No.: 13050034-FCC-E
Issue Date: September 16, 2013
Page: 23 of 35
www.siemec.com.cn

Annex B.ii. Photograph 2: EUT Internal Photo



Cover Off - Top View 2



Cover Off - Top View 2



SIEMIC, INC.

Accessing global markets

Title: EMC Test Report for Mobile phone
Main Model: Q50 BESTE
Serial Model: N/A
To: FCC Part 15 Subpart B Class B: 2012 , ANSI C63.4:2009

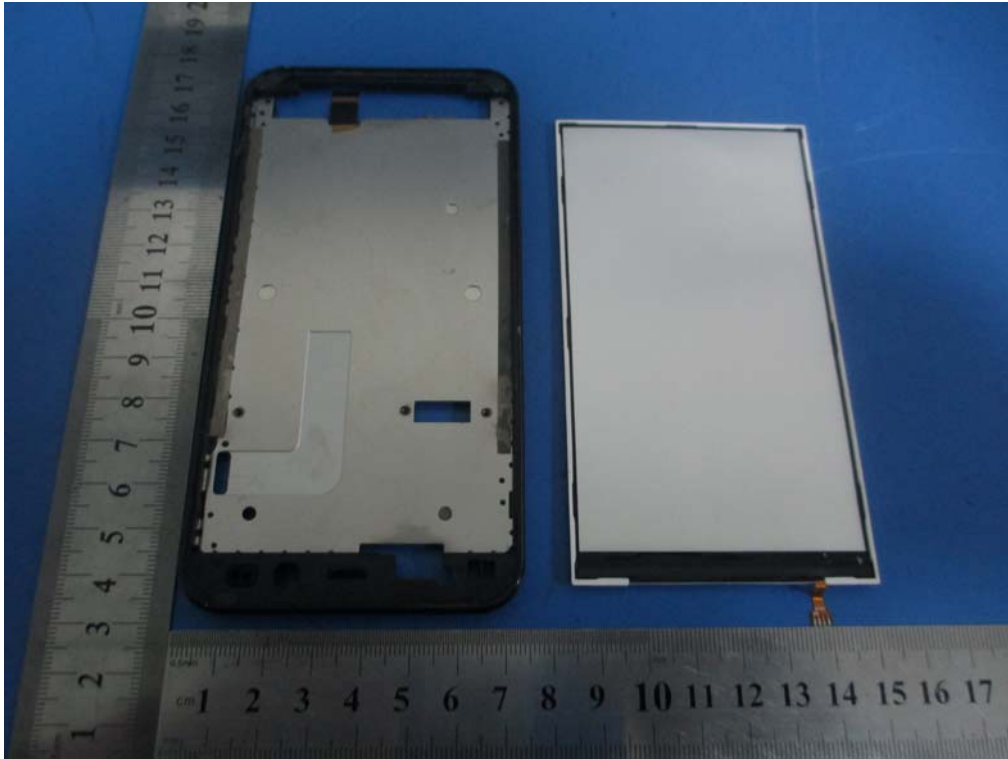
Report No.: 13050034-FCC-E
Issue Date: September 16, 2013
Page: 24 of 35
www.siemec.com.cn



Battery - Top View



Battery - Bottom View



LCD - Top View



LCD - Bottom View

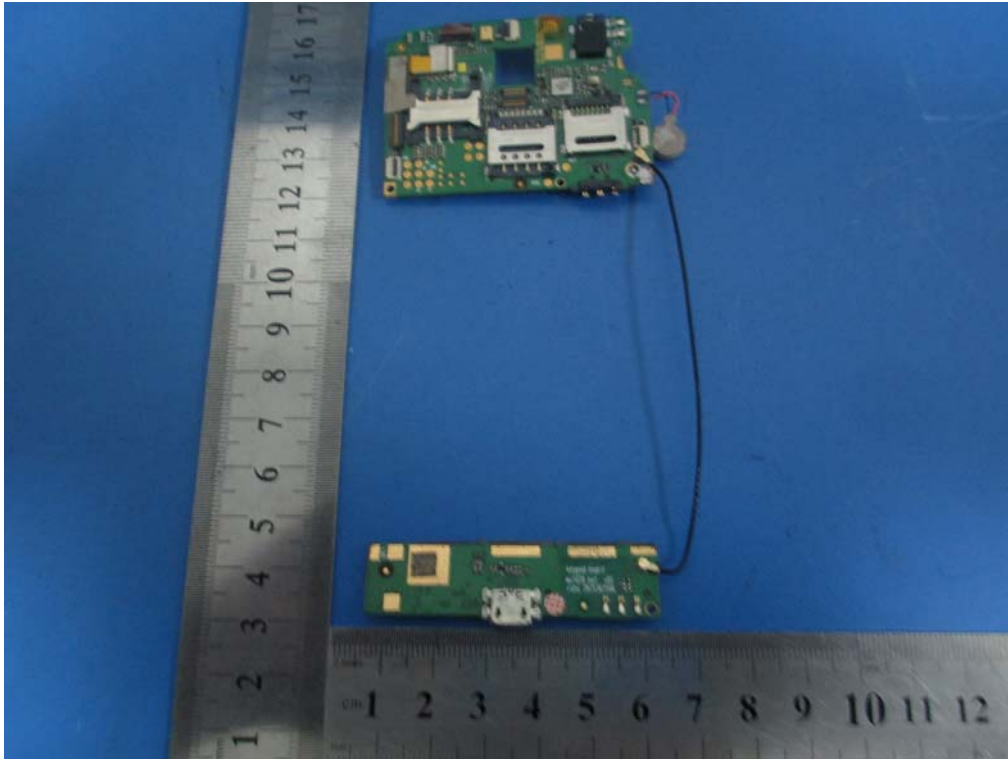


SIEMIC, INC.

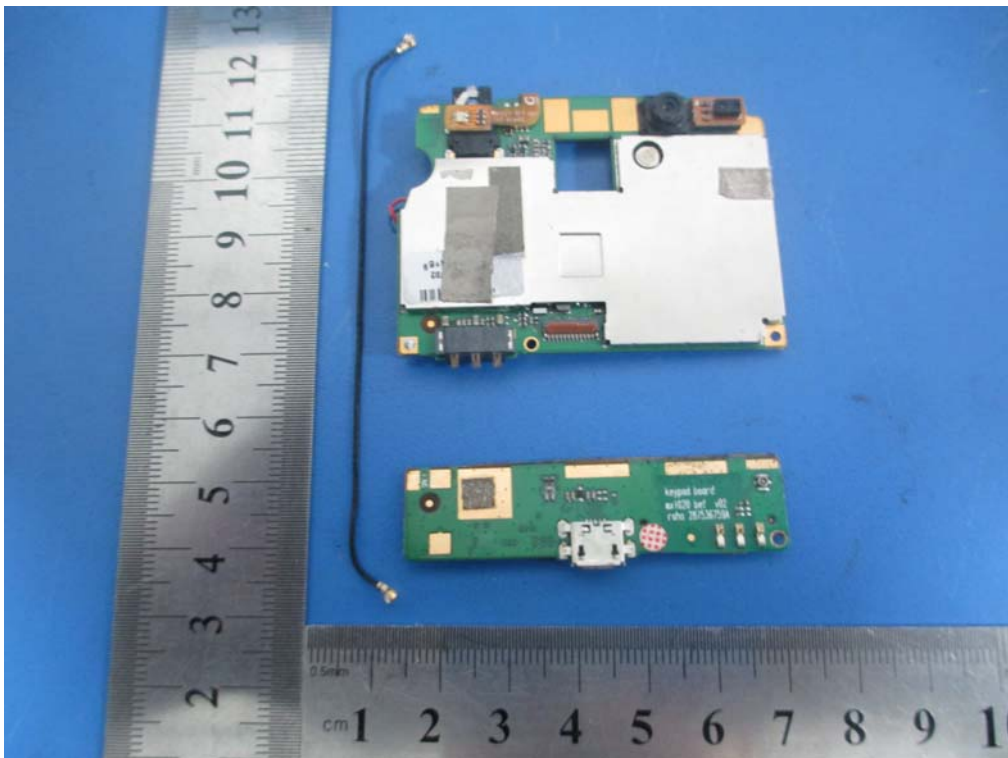
Accessing global markets

Title: EMC Test Report for Mobile phone
Main Model: Q50 BESTE
Serial Model: N/A
To: FCC Part 15 Subpart B Class B: 2012 , ANSI C63.4:2009

Report No.: 13050034-FCC-E
Issue Date: September 16, 2013
Page: 26 of 35
www.siemic.com.cn



EUT PCB - Top View



EUT PCB - Bottom View



SIEMIC, INC.

Accessing global markets

Title: EMC Test Report for Mobile phone
Main Model: Q50 BESTE
Serial Model: N/A
To: FCC Part 15 Subpart B Class B: 2012 , ANSI C63.4:2009

Report No.: 13050034-FCC-E
Issue Date: September 16, 2013
Page: 27 of 35
www.siemic.com.cn



EUT PCB Without Shielding - Top View



Bluetooth
/WIFI
Antenna

GSM/
WCDMA
Antenna

Antenna – Top View