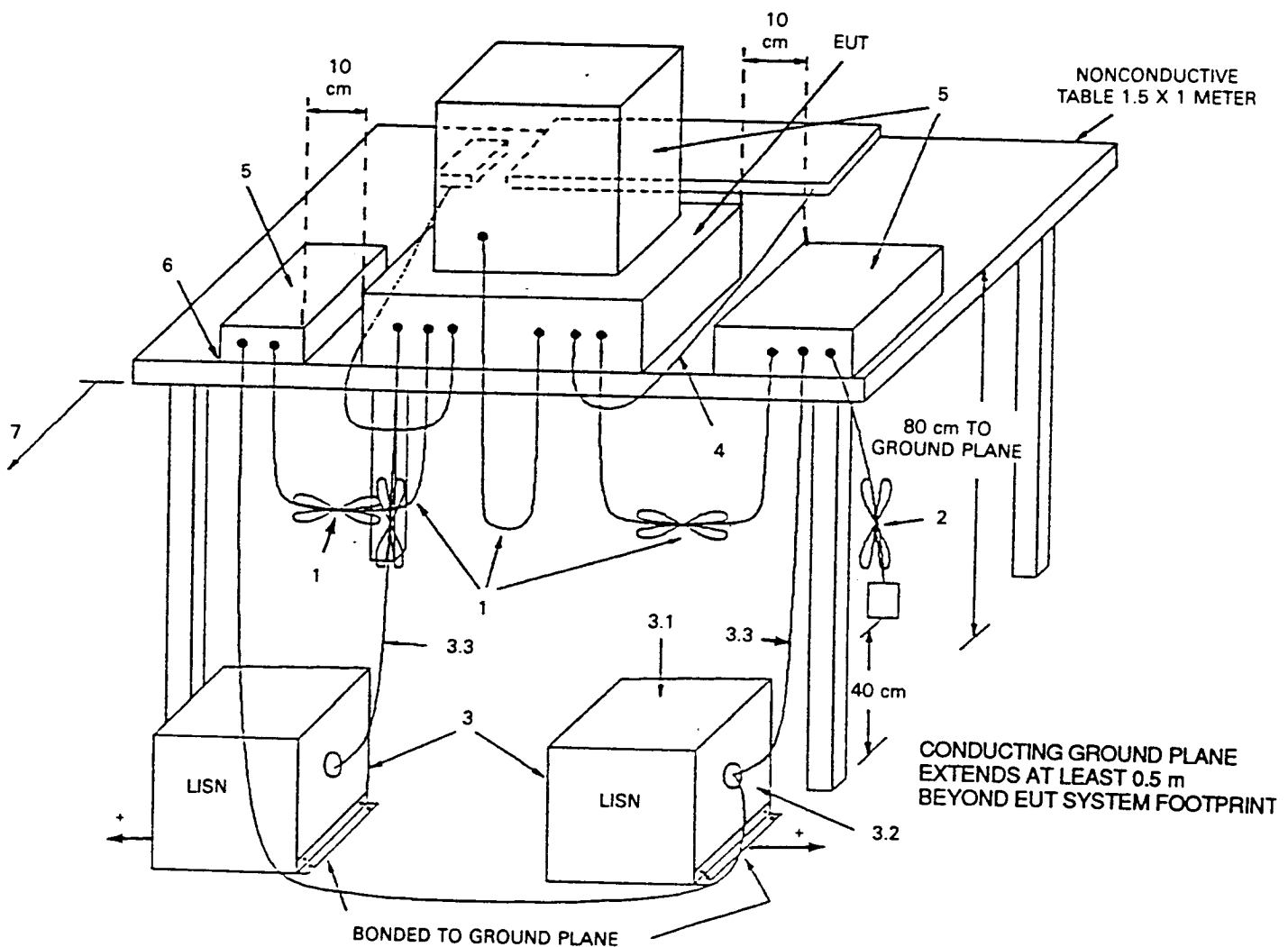


# TEST SET UP DIAGRAM FOR AC CONDUCTED LINE TESTING MODEL 27958XXX-A

ELECTRICAL AND ELECTRONIC EQUIPMENT IN THE RANGE OF 9 kHz TO 40 GHz

ANSI  
C63.4-1992



†LISNs may have to be moved to the side to meet 3.3 below.

## LEGEND:

1. Interconnecting cables that hang closer than 40 cm to the ground plane shall be folded back and forth forming a bundle 30 to 40 cm long, hanging approximately in the middle between ground plane and table.
2. I/O cables that are connected to a peripheral shall be bundled in center. The end of the cable may be terminated if required using correct terminating impedance. The total length shall not exceed 1 m.
3. EUT connected to one LISN. Unused LISN connectors shall be terminated in 50  $\Omega$ . LISN can be placed on top of, or immediately beneath, ground plane.
  - 3.1 All other equipment powered from second LISN.
  - 3.2 Multiple outlet strip can be used for multiple power cords of non-EUT equipment.
  - 3.3 LISN at least 80 cm from nearest part of EUT chassis.
4. Cables of hand-operated devices, such as keyboards, mouses, etc., have to be placed as close as possible to the host.
5. Non-EUT components being tested.
6. Rear of EUT, including peripherals, shall be all aligned and flush with rear of tabletop.
7. Rear of tabletop shall be 40 cm removed from a vertical conducting plane that is bonded to the floor ground plane (see 5.2).

**Fig 9(a)**  
**Test Configuration**  
**Tabletop Equipment Conducted Emissions**

FCC ID: G9H2-7958A  
Marstech Report No. 22389D  
EXHIBIT D(4)