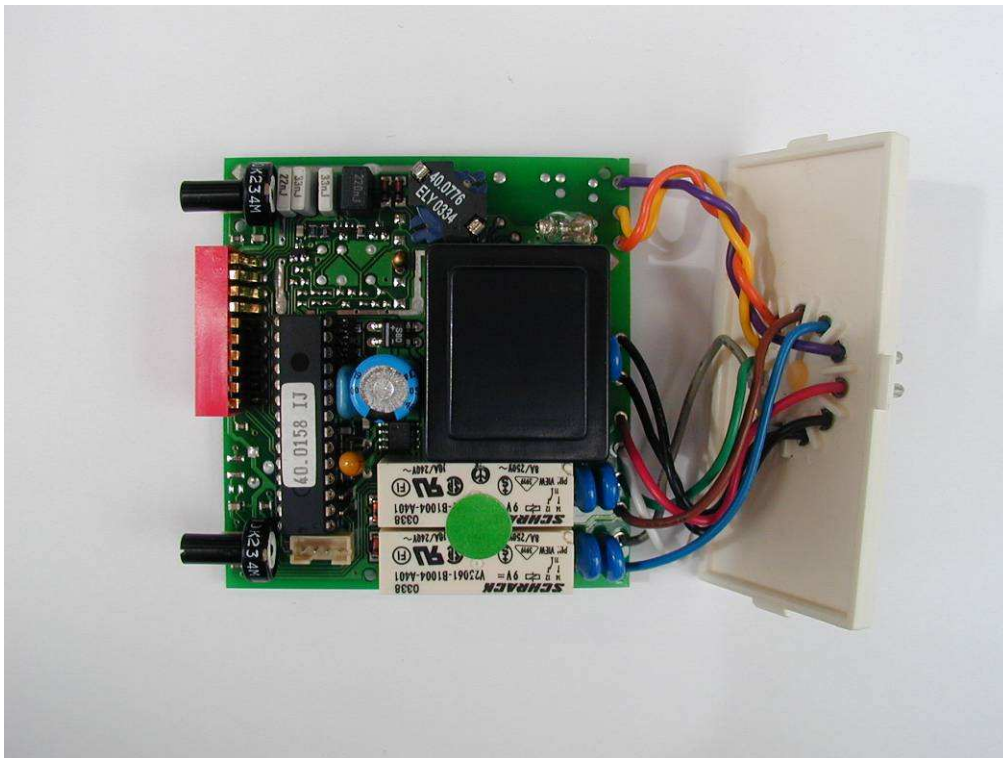


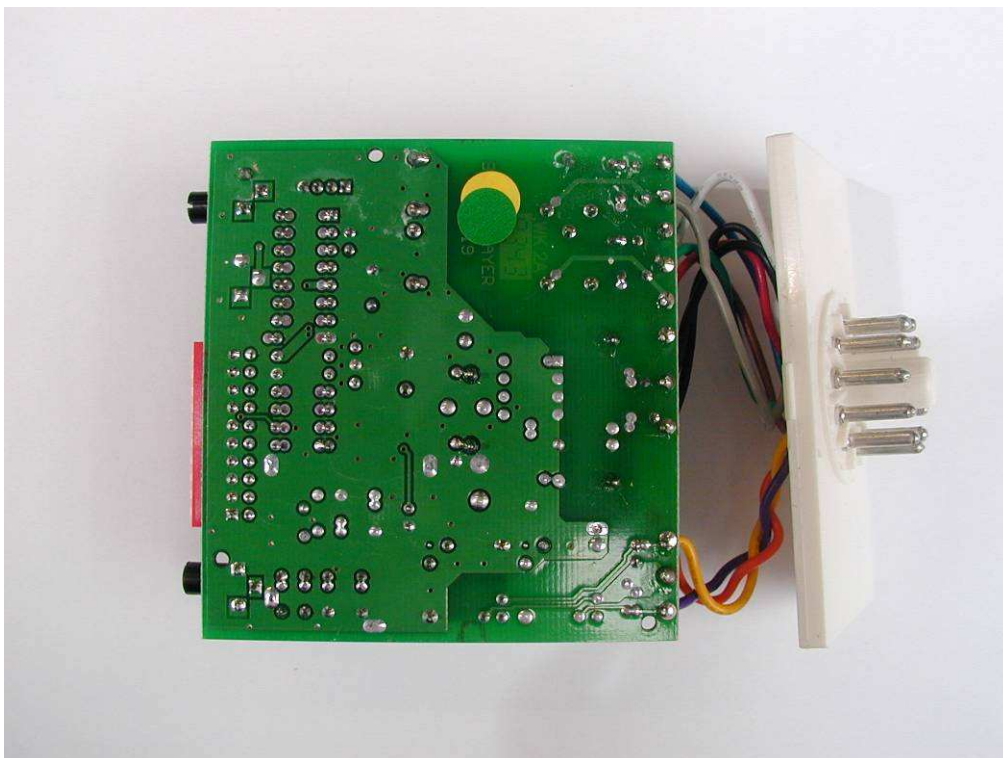
Single loop – 12-24V (Top Layer)



Single loop – 12-24V (Bottom Layer)

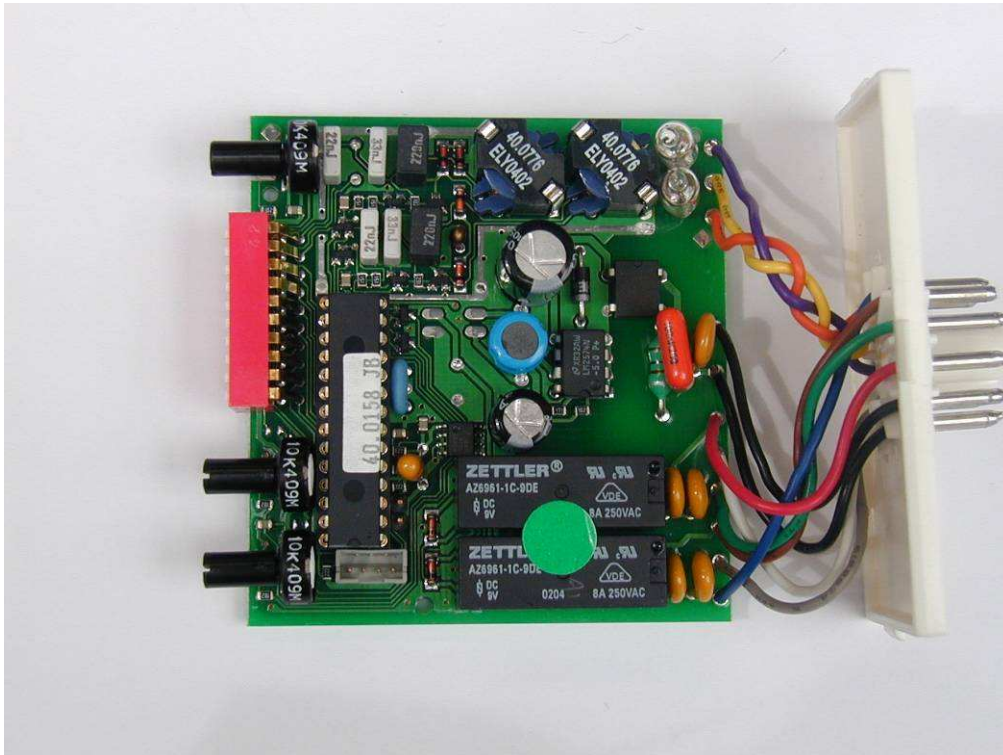


Single loop – 115 or 230 V (Top Layer)

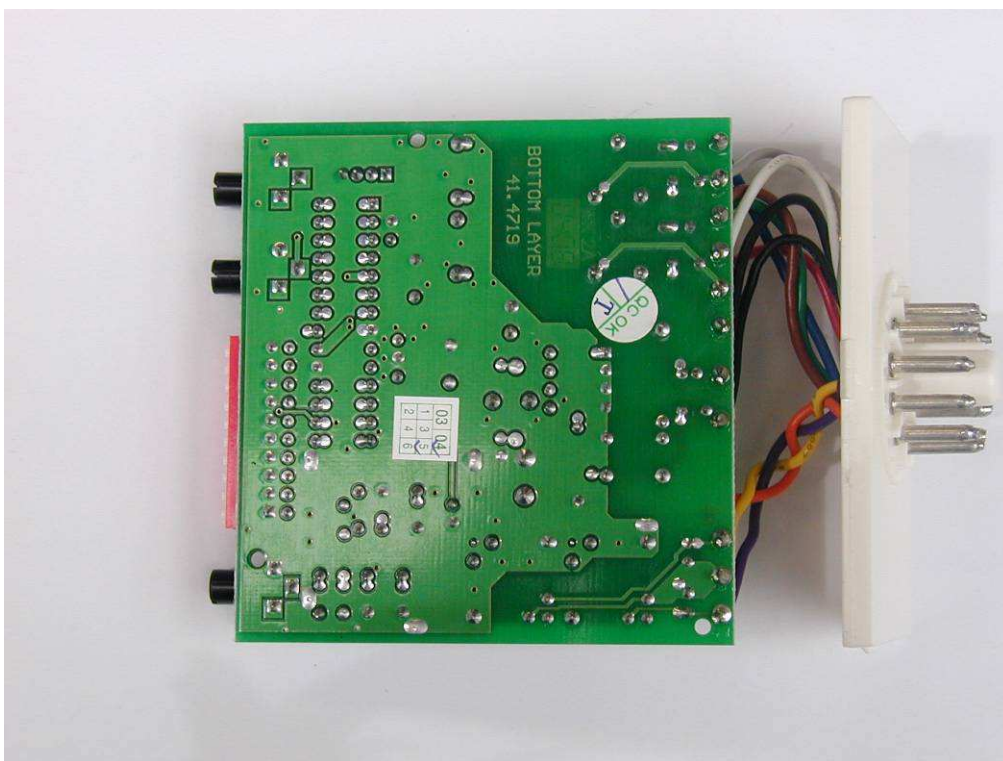


Single loop – 115 or 230 V (Bottom Layer)

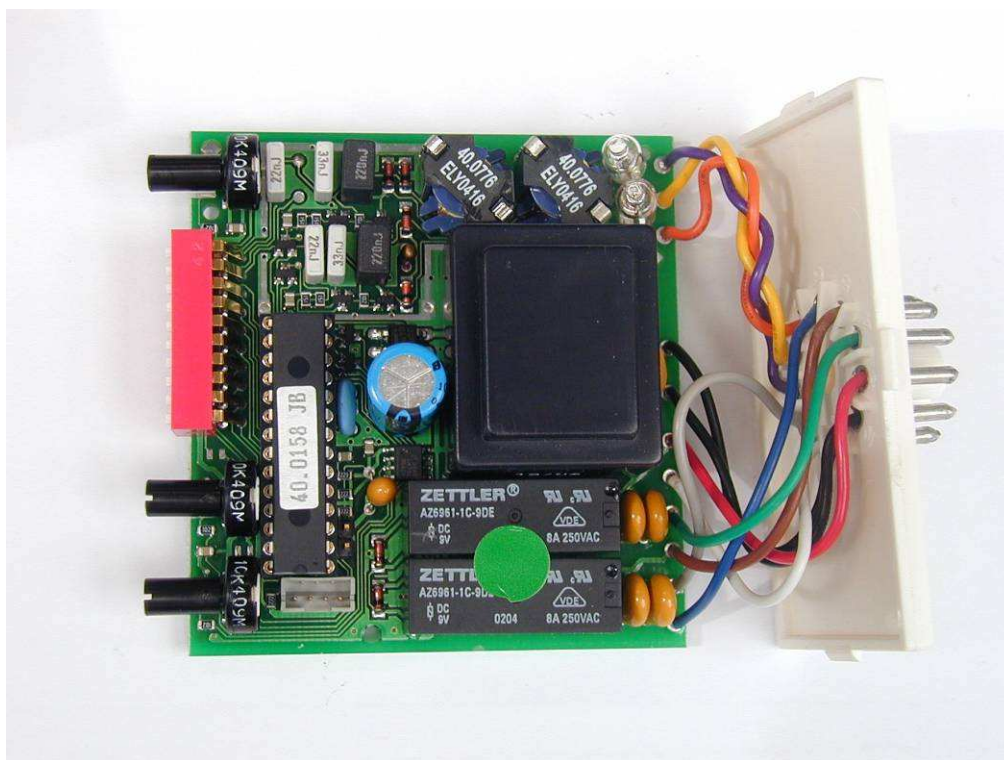




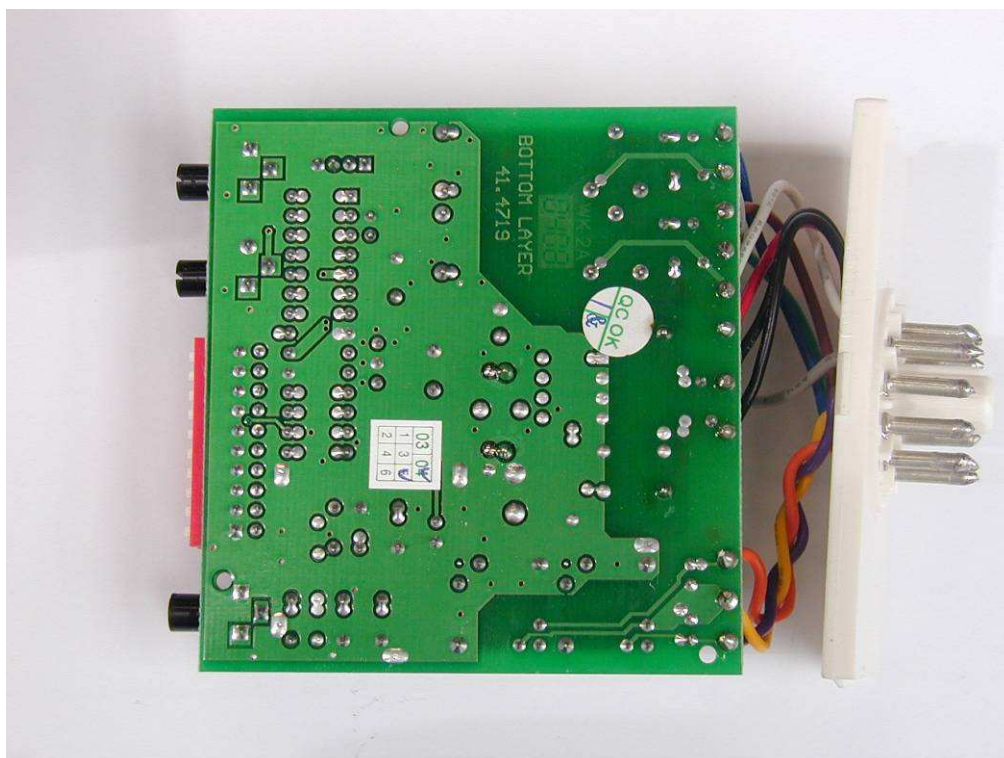
Dual loop – 12-24V (Top Layer)



Dual loop - 12-24V (Bottom Layer)

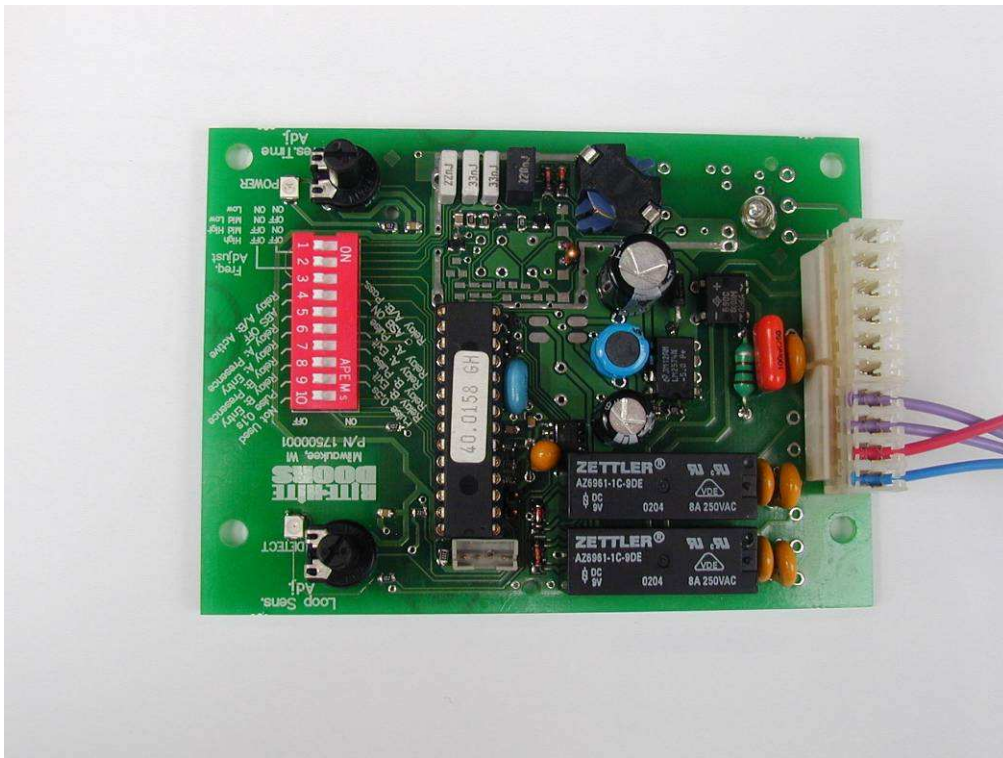


Dual loop – 115 or 230 V (Top Layer)

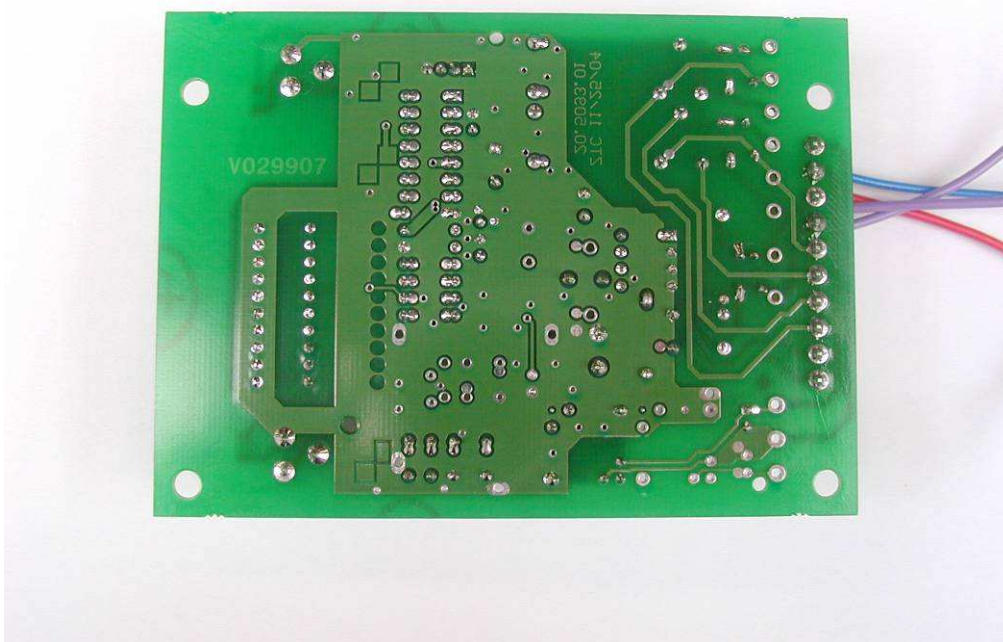


Dual loop – 115 or 230V (Bottom Layer)





Rite-Hite 12-24V (Top Layer)



Rite-Hite 12-24V (Bottom Layer)