



BOTTOM ISOMETRIC VIEW

ANTENNA SUPPORT
(pn 41.4234 or 40.0777)



TOP ISOMETRIC VIEW

TRANSCEIVER
(pn 41.4296 or 41.4297)
FCC LABEL
PLACEMENT

Due to small size of EUT, the compliance statement will be placed in manual.



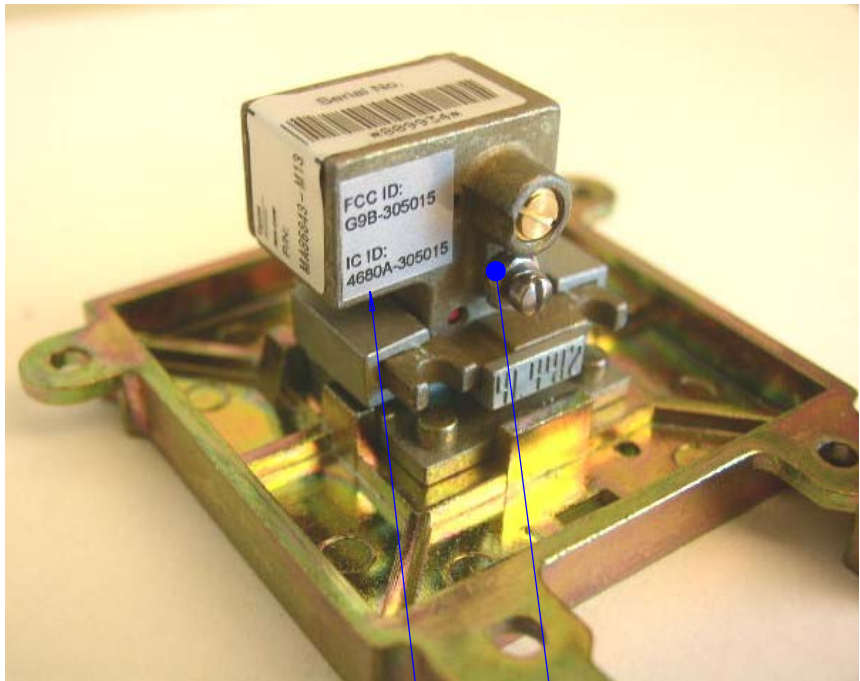
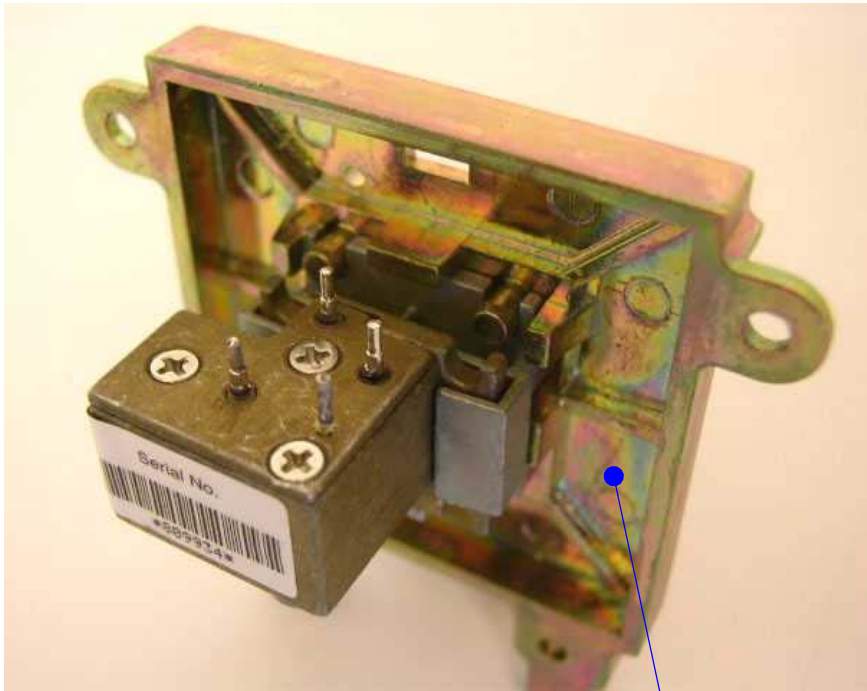
FRONT VIEW
(INCLUDING BONE FILTER)



B.E.A., Inc.
100 Enterprise Drive Pittsburgh, PA 15275
PH: (412) 249-4100 FAX: (412) 249-4101
www.beasensors.com

**TITLE: TRANSCEIVER WITH
SMALL ANTENNA SUPPORT**

SIZE	DWG NO	FILE OF:	DRAWN BY:
A	41.4234 or 40.0777	KJG	KJG
SCALE	DATE:	SHEET	
	22 SEP 2004	1 OF 1	

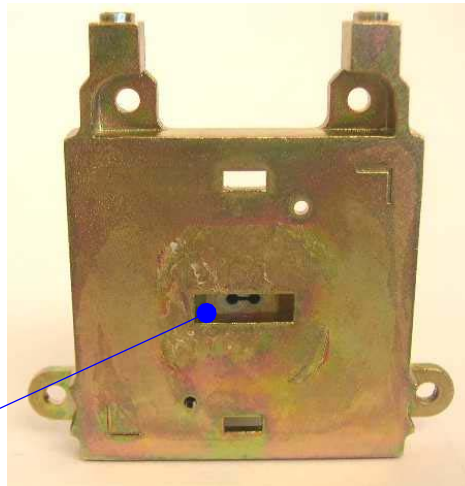


BOTTOM ISOMETRIC VIEW

TOP ISOMETRIC VIEW

LARGE SUPPORT
(pn 41.4698)

TRANSCEIVER
(pn 41.4297)
FCC LABEL
PLACEMENT



BONE FILTER
(pn 41.4412)

FRONT VIEW
(SHOWING BONE FILTER)



B.E.A., Inc.
100 Enterprise Drive Pittsburgh, PA 15275
PH: (412) 249-4100 FAX: (412) 249-4101
www.beasensors.com

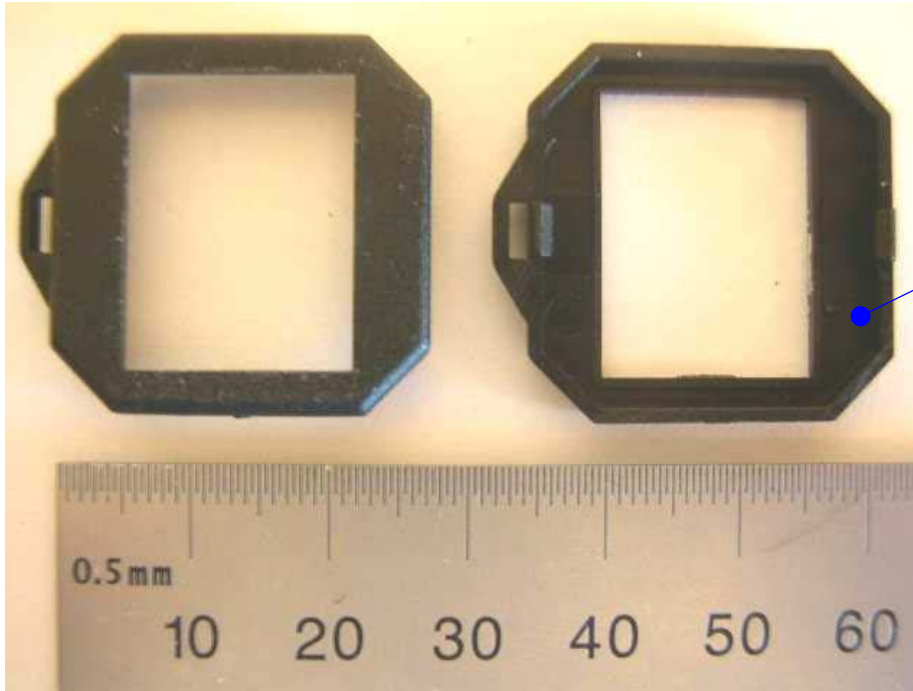
**TITLE: TRANSCEIVER WITH
LARGE ANTENNA SUPPORT**

SIZE	DWG NO	FILE OF:	DRAWN BY:
A		KJG	KJG
SCALE	DATE: 22 SEP 2004		SHEET 1 OF 1



FRONT

BACK



ANTENNA CLIP
(pn 41.4236)



B.E.A., Inc.
100 Enterprise Drive Pittsburgh, PA 15275
PH: (412) 249-4100 FAX: (412) 249-4101
www.beasensors.com

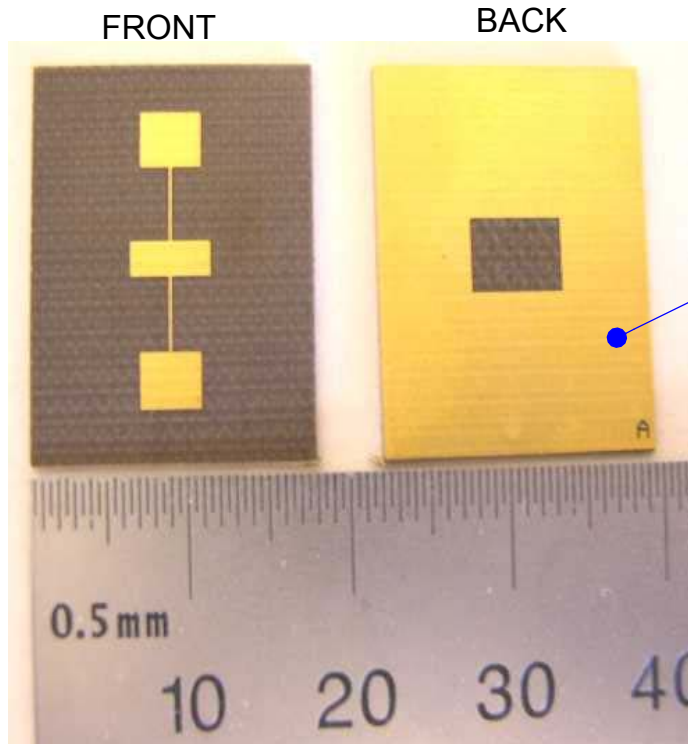
TITLE: ANTENNA CLIP

REVISION TABLE

No.	Description	Date
01		

Dimension in mm	Dimensional Tolerances									
	< 0.5 to 3	> 3 to 6	> 6 to 30	> 30 to 120	> 120 to 400	> 400 to 1000	> 1000 to 2000	> 2000 to 4000	> 4000 to 8000	> 8000 to 12000
Tolerance	± 0.1	± 0.1	± 0.2	± 0.3	± 0.5	± 0.8	± 1.2	± 2	± 3	± 4
Angle	Angular Tolerance									
	... 10	> 10 to 50	> 50 to 120	> 120 to 400						
Tolerance	± 1°	± 30'	± 20'	± 10'						

SIZE A	DWG NO 41.4236	FILE OF: KJG	DRAWN BY: KJG
SCALE	DATE: 22 SEP 2004		SHEET 1 OF 1



1X3 ANTENNA
(pn 41.4285)

REVISION TABLE

No.	Description	Date
01		

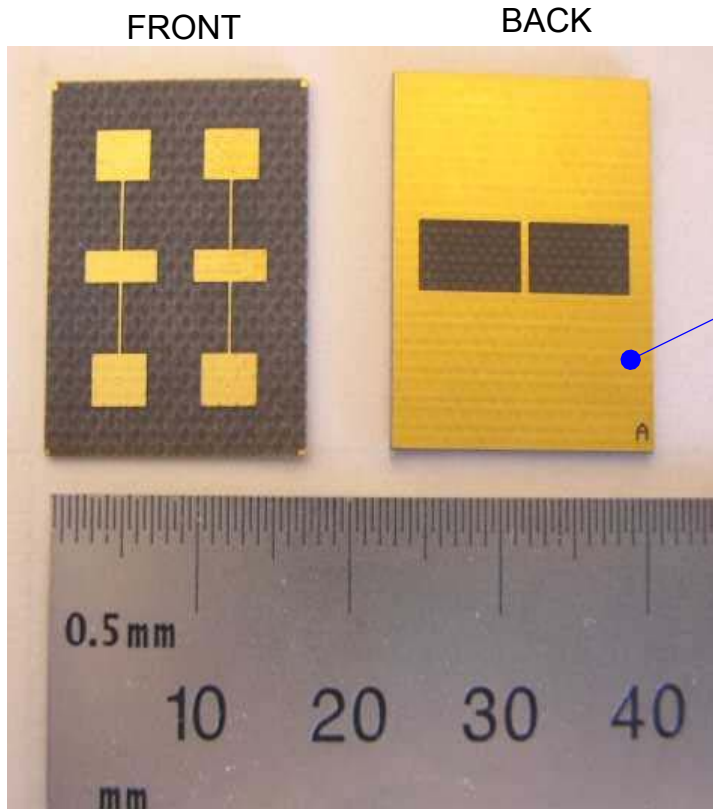
Dimension in mm	Dimensional Tolerances									
	< 0.5 to 3	> 3 to 6	> 6 to 30	> 30 to 120	> 120 to 400	> 400 to 1000	> 1000 to 2000	> 2000 to 4000	> 4000 to 8000	> 8000 to 12000
Tolerance	± 0.1	± 0.1	± 0.2	± 0.3	± 0.5	± 0.8	± 1.2	± 2	± 3	± 4
Angle	Angular Tolerance									
	... 10	> 10 to 50	> 50 to 120	> 120 to 400						
Tolerance	± 1°	± 30'	± 20'	± 10'						



B.E.A., Inc.
100 Enterprise Drive Pittsburgh, PA 15275
PH: (412) 249-4100 FAX: (412) 249-4101
www.beasensors.com

TITLE: 1X3 ANTENNA

SIZE A	DWG NO 41.4285	FILE OF: KJG	DRAWN BY: KJG
SCALE	DATE: 22 SEP 2004		SHEET 1 OF 1



2X3 ANTENNA
(pn 41.4284)

REVISION TABLE

No.	Description	Date
01		

Dimension in mm	Dimensional Tolerances									
	< 0.5 to 3	> 3 to 6	> 6 to 30	> 30 to 120	> 120 to 400	> 400 to 1000	> 1000 to 2000	> 2000 to 4000	> 4000 to 8000	> 8000 to 12000
Tolerance	± 0.1	± 0.1	± 0.2	± 0.3	± 0.5	± 0.8	± 1.2	± 2	± 3	± 4
Angle	Angular Tolerance									
	... 10	> 10 to 50	> 50 to 120	> 120 to 400						
Tolerance	± 1°	± 30'	± 20'	± 10'						



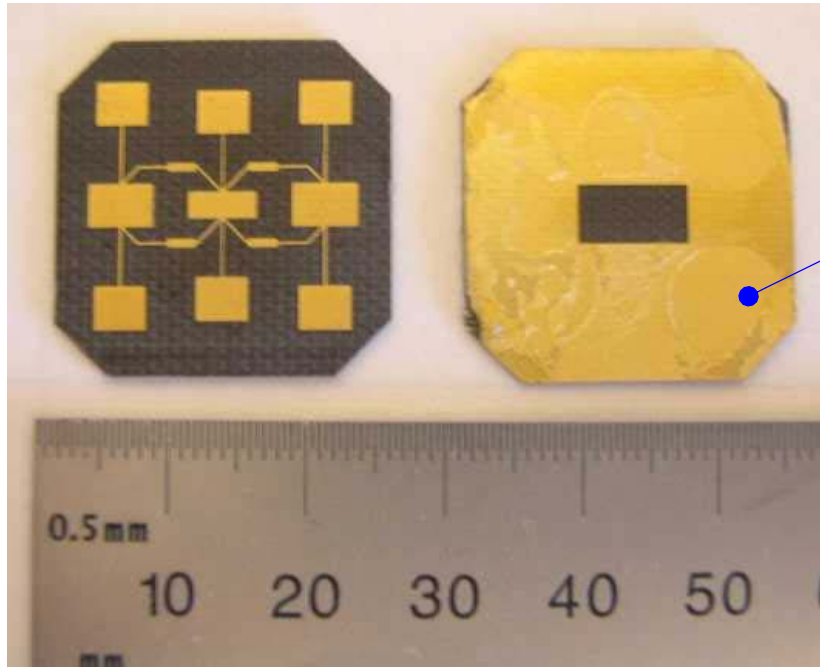
B.E.A., Inc.
100 Enterprise Drive Pittsburgh, PA 15275
PH: (412) 249-4100 FAX: (412) 249-4101
www.beasensors.com

TITLE: 2X3 ANTENNA

SIZE A	DWG NO 41.4284	FILE OF: KJG	DRAWN BY: KJG
SCALE	DATE: 22 SEP 2004		SHEET 1 OF 1

FRONT

BACK



3X3 ANTENNA
(pn 41.4771)

REVISION TABLE

No.	Description	Date
01		

Dimension in mm	Dimensional Tolerances									
	< 0.5 to 3	> 3 to 6	> 6 to 30	> 30 to 120	> 120 to 400	> 400 to 1000	> 1000 to 2000	> 2000 to 4000	> 4000 to 8000	> 8000 to 12000
Tolerance	± 0.1	± 0.1	± 0.2	± 0.3	± 0.5	± 0.8	± 1.2	± 2	± 3	± 4
Angle	Angular Tolerance									
	... 10	> 10 to 50	> 50 to 120	> 120 to 400						
Tolerance	± 1°	± 30'	± 20'	± 10'						



B.E.A., Inc.
100 Enterprise Drive Pittsburgh, PA 15275
PH: (412) 249-4100 FAX: (412) 249-4101
www.beasensors.com

TITLE: 3X3 ANTENNA

SIZE A	DWG NO 41.4771	FILE OF: KJG	DRAWN BY: KJG
SCALE	DATE: 22 SEP 2004		SHEET 1 OF 1