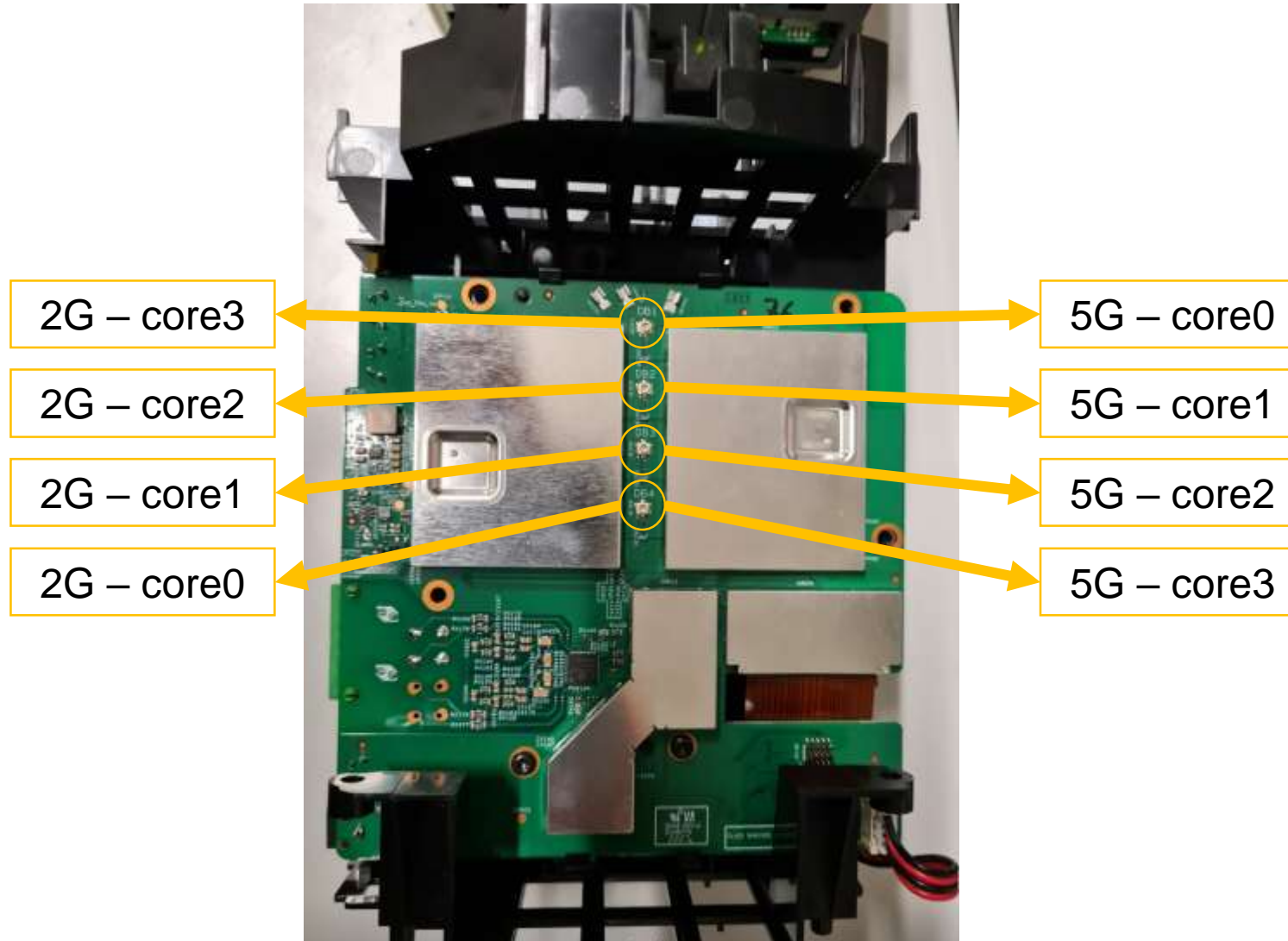
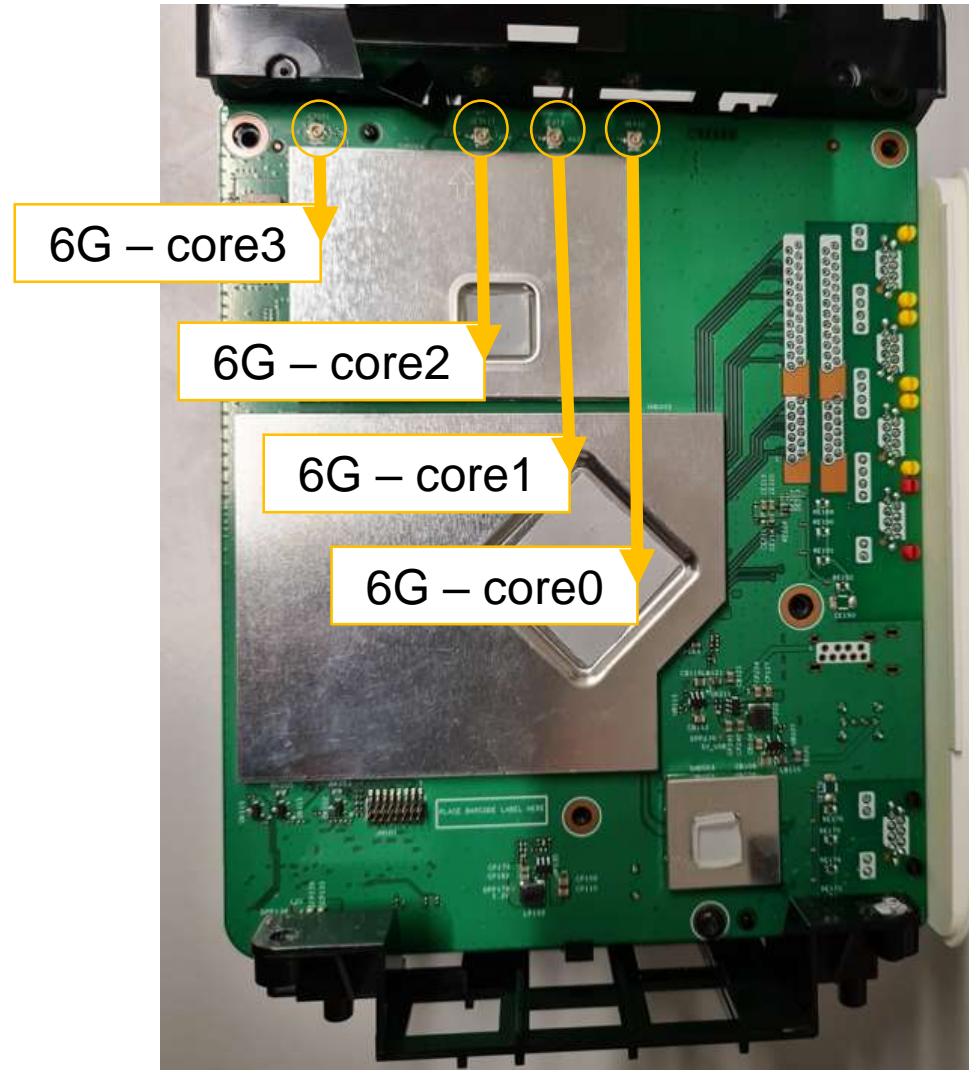


EWM322T/EWA322T – ANTENNA

2G – 5G chipsets RF connectors

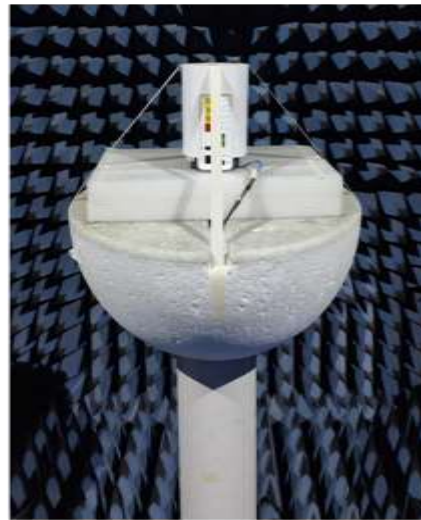


6G chipset RF connectors



Antenna test environment for the dual-band antennas

- The dual-band antennas are tested in a full anechoic chamber (MVG/SG24) with the VNA Keysight/ E5071C

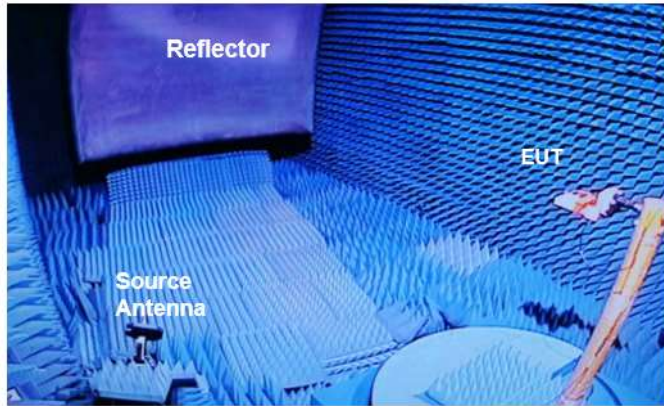


Satimo SG24	name of commercial test software
	spm1.3.1 and satenv 2.0.1.5 build12

Device	Type/Mode	Serial	Manufacturer	Cal. Date	Cal. due Date
SG24	Standard	SG24	MVG	11/15/2021	11/14/2022
Turn Table	N/A	-	MVG	N/A	N/A
Power Supply Unit	CASTLE 3K(6G)	190916-26590068	SANTAK	N/A	N/A
Active Switching Unit	N/A	MODU-009-A-0120	MVG	N/A	N/A
Control Unit SG24	N/A	MODU-022-A-0032	MVG	N/A	N/A
Amplification Unit	N/A	MODU-020-B-0005	MVG	N/A	N/A
Cable 8m - 400MHz to 6GHz	SUCOFLEX 106	SN 81469 /6	MVG	11/15/2021	11/14/2022
Temperature & Humidity	deli	-	deli	N/A	N/A
ENA Series Network Analyzer	E5071C	MY46523087	KeySight	11/24/2021	11/23/2022

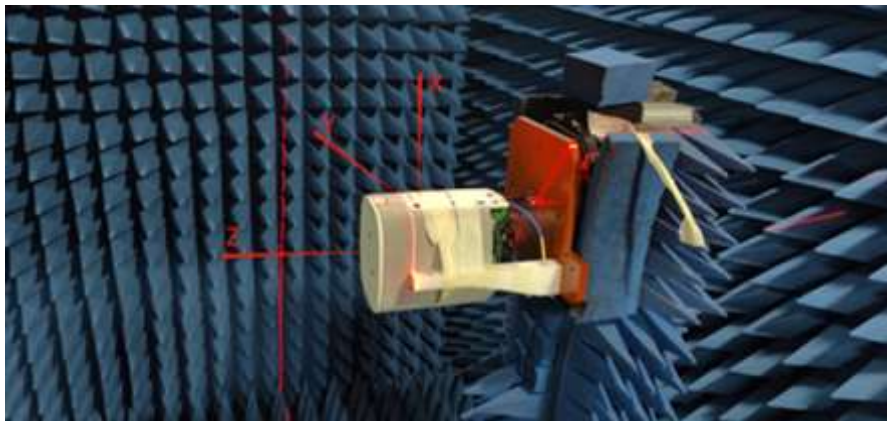
Antenna test environment for the 6GHz antennas

- The 6GHz antennas are tested in a full anechoic chamber (EMT-RCR120) with the VNA Keysight/ N5225B



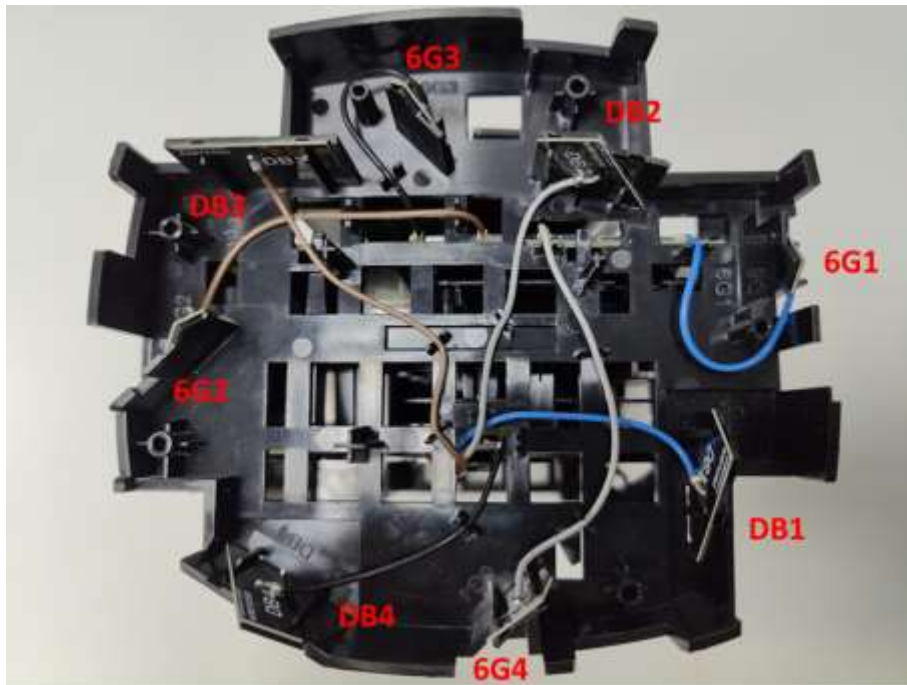
EMT-RCR120 Compact Antenna Test Range(CATR)	name of commercial test software
	EMT Far-Field Antenna Measurement System

Device	Type/Mode	Serial	Manufacturer	Cal.Date	Cal.Due Date
EMT-RCR120	Standard	EMT-RCR120	EM-Testing	10/26/2021	10/25/2022
Three-dimensional rotary table and its control system	Dongtintech	DT001201911104	EM-Testing	N/A	N/A
PNA Network Analyzer	N5225B	MY58422424	KeySight	6/23/2022	6/23/2023
Reflective surface system	RCR120	-	EM-Testing	N/A	N/A
Feeders and their control systems	EMT4000	-	EM-Testing	N/A	N/A
Power Supply Unit	CASTLE 3K(6G)	190929-35470033	SANTAK	N/A	N/A
Cable 4m - 5GHz to 50GHz	JB360	-	Jun You	10/26/2021	10/25/2022
Temperature & Humidity	deli	-	deli	N/A	N/A



Antenna test setup

- Antennas are tested after a full calibration of the chamber (including the testing cable insertion loss)
- Antennas are tested in LUXSHARE-ICT (Address : No.158 Jinchang Road, Jinxi Town, Suzhou, Jiangsu province, China)
- Antennas are tested by Xucheng. Hu (xucheng.hu@luxshare-ict.com)
- Antennas are tested in August 2022



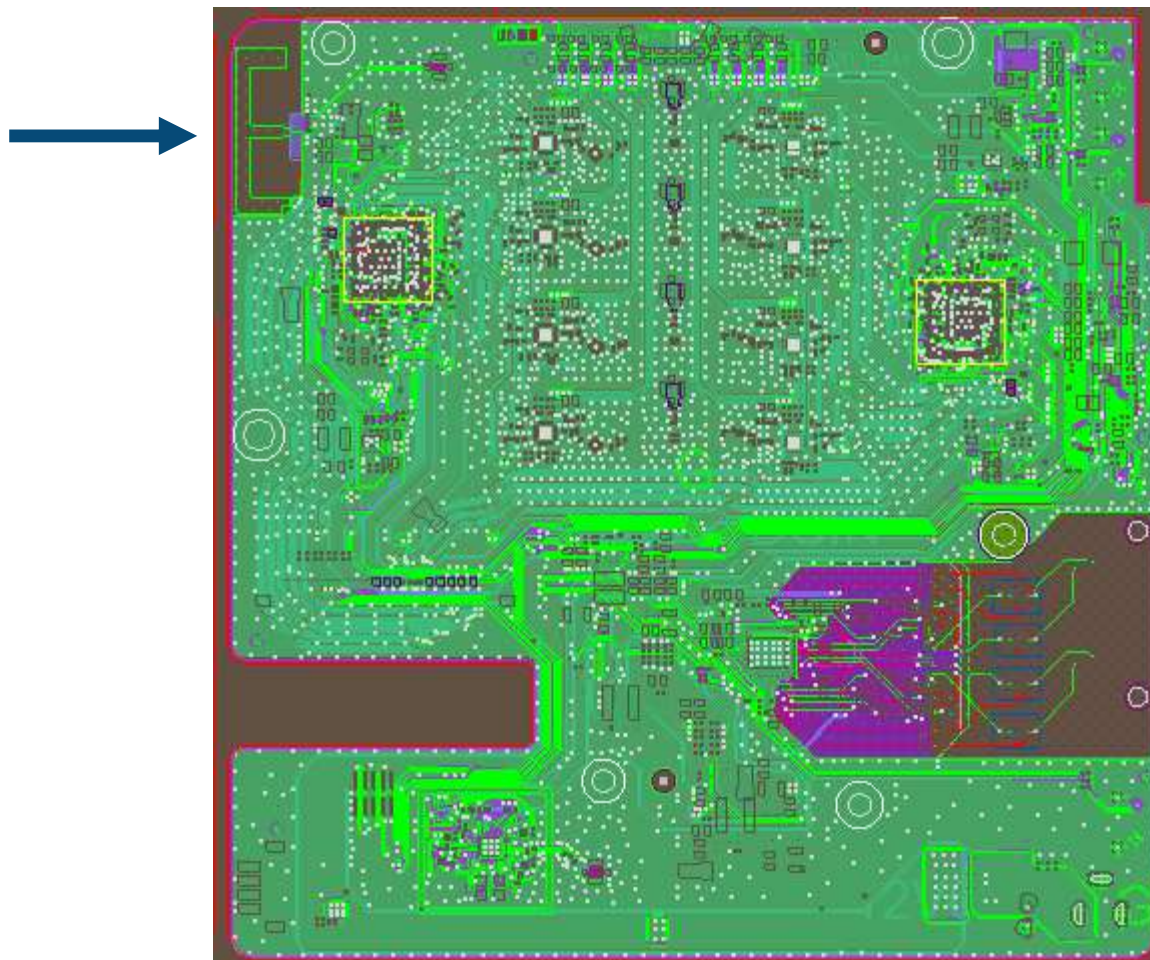
Antenna location



Testing cable

BLE Antenna

The BLE antenna is printed on the Wi-Fi board and is PIFA (printed inverted F antenna) type



MERCI

