

## APPENDIX E: LABEL AND LABEL LOCATION

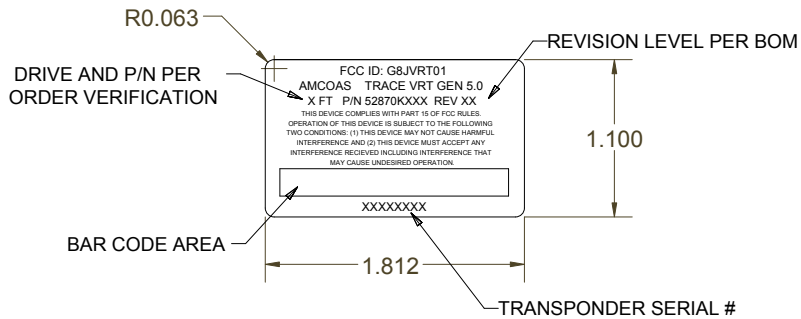


**PHOTOGRAPH 1: LOCATION OF LABEL ON DEVICE**

Please refer to the following page for the label sample.



REV	DESCRIPTION	DATE
A	INITIAL RELEASE	1/15/02
B	CHANGED MODEL TO TRACE VRT. ADDED P/N AND REV.	8/06/02



MATERIAL: WEATHER RESISTANT POLYIMIDE (KAPTON)  
 ADHESIVE: PERMANENT ACRYLIC  
 COLORS: BLACK COPY WITH A WHITE BACKGROUND  
 OEM P/N: BRADY THT-43-457-10, TYCO SA207-T2K-S OR  
 PERMACEL 45075

OLD DWG # N.A.	DRAWING RELEASE ECN #:	DRAWN smurray	12/12/2001	A MCO AUTOMATED SYSTEMS, LLC 107 ERSKINE LANE SCOTT DEPOT, WV 25560 TEL: 304 757-3388 FAX: 304 757-3388	
TOLERANCES-UNLESS OTHERWISE SPECIFIED INCHES ANGLES .X .1 .XX .02" .XXX .005" SURFACES w min		CHECKED		TITLE LABEL, FCC, S/N, GAS, GEN 5	
THIS DOCUMENT IS THE PROPERTY OF THE AUTOMATED SYSTEMS BUSINESS UNIT, AND ITS SUBSTANCE IS CONFIDENTIAL AND PROPRIETARY. THE CONTENTS HEREOF SHALL NOT BE PUBLISHED OR DISCLOSED TO OUTSIDE PARTIES OR USED FOR THEIR BENEFIT WITHOUT THE WRITTEN AUTHORIZATION OF AUTOMATED SYSTEMS BUSINESS UNIT.		QA		SIZE A	MATERIAL SEE NOTES
		MFG		DWG NO 52870P015	REV
		APPROVED		SCALE	SHEET OF

