

## APPENDIX E: LABEL AND LABEL LOCATION

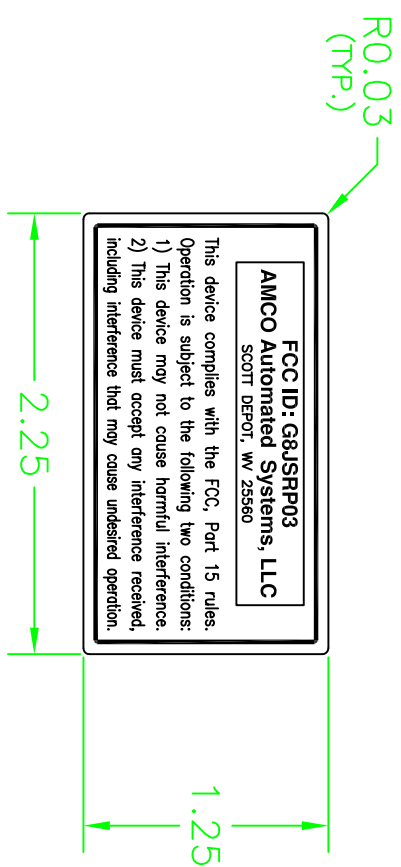


**PHOTOGRAPH 2: LOCATION OF LABEL ON DEVICE**

Please refer to the following page for the FCC ID label sample.

NOTE: LIGHT-GRAY BACKGROUND WITH BLACK LETTERING

REVISIONS		
REV	COMMENTS	DATE
1	CHANGED SRP FCC ID # FROM G8J5SRP02	XX-XXX-XX



MATERIAL: ADHESIVE BACKED WEATHER RESISTANT POLYESTER,  
 MATTE SILVER POLYESTER WITH 1 MIL CLEAR OVERLAM.

6						OLD DWG #	INTERPRET PER ANSI Y14.5
5						N.A.	& STD PE-1000
4						TOLERANCES-UNLESS OTHERWISE SPECIFIED	
3						INCHES	ANGLES: 1°
2						.XX±	MILLIMETERS
1	PP	XXX	XXX	XX-XXX-XX		.XXX±	.02"
						.XXX±	.010"
REV	DFT	ENGR	CHKR	ECN #	DATE	SURFACES	
DRAWING REVISIONS							
DWG. RELEASE ECN #: 634							
<p>THIS DOCUMENT IS THE PROPERTY OF AMCO AUTOMATED SYSTEMS, AND ITS SUBSTANCE IS CONFIDENTIAL AND PROPRIETARY. THE CONTENTS HEREOF SHALL NOT BE PUBLISHED OR DISCLOSED TO OUTSIDE PARTIES OR USED FOR THEIR BENEFIT WITHOUT THE WRITTEN AUTHORIZATION OF AMCO AUTOMATED SYSTEMS.</p>							
<p>107 ERSKINE LANE SCOTT DEPOT, WV 25560          TEL: 304 757-3300 FAX: 304 757-3388</p>				<p>TITLE: LABEL, FCC, SRP</p> <p>PROJECT: SHORT RANGE PROGRAMMER</p>			
DRFT: PP		10-APR-00		DRAWING NUMBER		52806P025	
ENGR: DJ		11-APR-00		SCALE: NTS		SHEET: 1 OF 1	
CHKR: DA		11-APR-00		SIZE: A			

**PRELIMINARY**