

REVISIONS		
REV	COMMENTS	DATE
0	RELEASE FOR PRODUCTION ECN 1164	11-07-07
1	ADD INDUSTRY CANADA ID PER ECN 1184	11-20-07
2	INDUSTRY CANADA ID CHANGED FROM 3599 TO 4557C. ADD FCC ID G8JHHI04 and IC 4557C-HHI04 TO LABEL PER ECN 1189	12-19-07
3	PRODUCT FAMILY CODE CHANGED TO MANUFACTURING LOCATION CODE. CHANGED PRINTER TYPE AND INK RIBBON. ADDED NEW FCC LOGO PER ECN 1193	01-07-08

- A - USE PERMANENT BLACK INK AS RECOMMENDED BY THE LABEL STOCK VENDOR. CENTER THE 23-CHARACTER CODE 128 BARCODE. BARCODE SHOULD HAVE SHARP BLACK LINES AND CLEAN WHITE SPACES. USE A MINIMUM HEIGHT OF .140". THE BARCODE SHALL BE THE PRODUCT 10-CHARACTER STYLE NUMBER WITH ITS 2-DIGIT REVISION FOLLOWED BY THE 1-DIGIT REPAIR NUMBER, FOLLOWED BY THE 10-CHARACTER SERIAL NUMBER. CENTER THE EQUIVALENT ALPHA-NUMERIC CHARACTERS WITH A MINIMUM HEIGHT OF .080" BELOW THE BARCODE. ADD A SPACE FOLLOWING THE 2-DIGIT REVISION AND ANOTHER SPACE FOLLOWING THE 1-DIGIT REPAIR NUMBER.
- B - ONCE A SERIAL NUMBER IS PRINTED ONTO A LABEL IT SHALL NOT BE DUPLICATED. LABELS THAT ARE DAMAGED DURING PLACEMENT SHALL BE REPLACED USING A NEW LABEL WITH A NEW SERIAL NUMBER.

**3** C - FOR EACH PRODUCT FAMILY, AT THE BEGINNING OF A NEW MANUFACTURING WEEK, THE SERIALIZED PORTION OF THE SERIAL NUMBER SHALL START AT THE BEGINNING OF THE ASSIGNED RANGE. PRODUCT FAMILY IS DEFINED AS THE FIRST 7 DIGITS OF THE ASSEMBLY DRAWING NUMBER.

D - MANUFACTURING WEEK 01 STARTS ON THE FIRST SUNDAY OF A NEW YEAR. THE START OF THE NEW MANUFACTURING YEAR ALSO STARTS ON THE FIRST SUNDAY OF THE NEW YEAR.

**3** E - DELETED

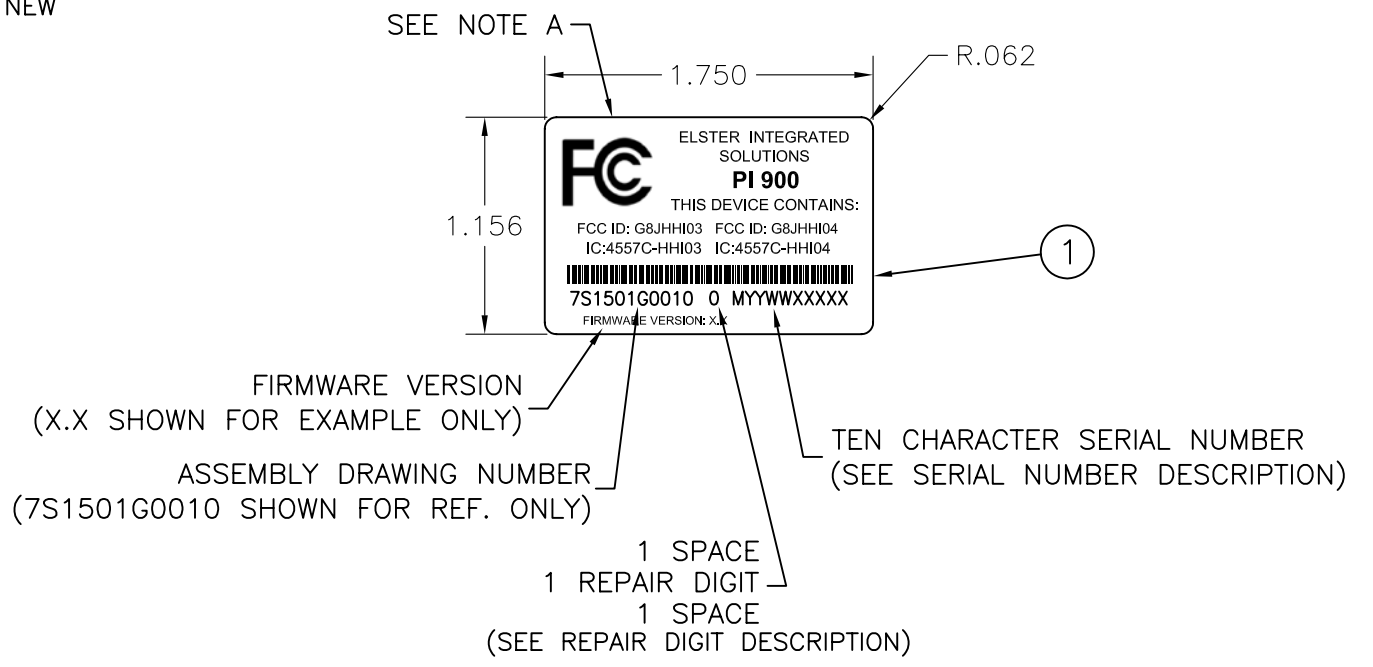
F - REPAIR DIGIT DESCRIPTION:  
 NEW PRODUCTION = 0  
 FOR FIRST REPAIR, DUPLICATE THE LABEL EXCEPT CHANGE REPAIR DIGIT TO 1.  
 FOR SECOND REPAIR, DUPLICATE THE LABEL EXCEPT CHANGE REPAIR DIGIT TO 2.  
 FOR THIRD REPAIR, DUPLICATE THE LABEL EXCEPT CHANGE THE REPAIR DIGIT TO 3.

**3** G - SERIAL NUMBER DESCRIPTION  
MYWWXXXXX  
 M = MANUFACTURING LOCATION  
 YY = PRODUCTION YEAR  
 WW = PRODUCTION WEEK  
 XXXXX


MANUFACTURING LOCATION

- M = 0 NOT ASSIGNED
- M = 1 DYNALAB - REYNOLDSBURG, OHIO
- M = 2 PLEXUS - JUAREZ, MEXICO
- M = 3 CREATION TECHNOLOGIES - LEXINGTON, KENTUCKY
- M = 4 NOT ASSIGNED
- M = 5 NOT ASSIGNED
- M = 6 NOT ASSIGNED
- M = 7 NOT ASSIGNED
- M = 8 NOT ASSIGNED
- M = 9 NOT ASSIGNED
- M = A NOT ASSIGNED
- M = B NOT ASSIGNED
- M = C NOT ASSIGNED
- M = D NOT ASSIGNED
- M = E NOT ASSIGNED
- M = F NOT ASSIGNED

H - WEEKLY SERIAL NUMBER RANGE ASSIGNMENTS:  
 00001-99,999



**3** MATERIAL:  
 1. LABEL STOCK IDENTCO 1.75 x 1.1563 - TT700 EIS P/N 7S1521 H001  
 INK RIBBON BOUGHT FROM RELIZON Re Order # 1A4718H02/87908 3.27" X 1476'  
 TO BE PRINTED ON ZEBRA 110xi III Plus PRINTER

OLD DWG # N.A.	INTERPRET PER ANSI Y14.5 & STD PE-1000	 <b>ELSTER INTEGRATED SOLUTIONS</b> 208 SOUTH ROGERS LANE RALEIGH, NC 27610 TEL: 919 250-5700 FAX: 919 250-5439											
TOLERANCES--UNLESS OTHERWISE SPECIFIED <table border="0"> <tr> <td><u>INCHES</u></td> <td><u>ANGLES± 1°</u></td> <td><u>MILLIMETERS</u></td> </tr> <tr> <td>.X±</td> <td></td> <td>X.±</td> </tr> <tr> <td>.XX± .02"</td> <td></td> <td>X.X±</td> </tr> <tr> <td>.XXX± .005"</td> <td></td> <td>X.XX±</td> </tr> </table>			<u>INCHES</u>	<u>ANGLES± 1°</u>	<u>MILLIMETERS</u>	.X±		X.±	.XX± .02"		X.X±	.XXX± .005"	
<u>INCHES</u>	<u>ANGLES± 1°</u>	<u>MILLIMETERS</u>											
.X±		X.±											
.XX± .02"		X.X±											
.XXX± .005"		X.XX±											
SURFACES ✓ min		TITLE: LABEL, FCC, PI 900 EXTERIOR											
SURFACES ✓ min		PROJECT: PI 900											
THIS DOCUMENT IS THE PROPERTY OF ELSTER INTEGRATED SOLUTIONS, AND ITS SUBSTANCE IS CONFIDENTIAL AND PROPRIETARY. THE CONTENTS HEREOF SHALL NOT BE PUBLISHED OR DISCLOSED TO OUTSIDE PARTIES OR USED FOR THEIR BENEFIT WITHOUT THE WRITTEN AUTHORIZATION OF ELSTER INTEGRATED SOLUTIONS		DRFT: ST 03-29-07											
		ENGR: JC 11-07-07											
		<b>DRAWING NUMBER</b> 1B12304 H01											
		SCALE: NTS SHEET: 1 OF 1											