



Internal Photos

EUT Name: PI 900

EUT Model: PI 900 C2PC

FCC ID: G8JHHI03

IC ID: 4557C-HHI03

FCC Title 47, Part 15, SubpartC, RSS-210 Issue 8, ANSI C63.4:2009

Prepared for:

John Holt
Elster Solutions, LLC
208 South Rogers Lane
Raleigh, NC 27610 USA
Tel: 919-250-5557
Fax: 919-250-5486

Prepared by:

TUV Rheinland of North America
762 Park Avenue
Youngsville, NC 27596
Tel: (919) 554-3668
Fax: (919) 554-3542
<http://www.tuv.com/>

Report/Issue Date: 12 January 2012

Report Number: Supplement to 31152935.001 Rev A - Internal Photos

Internal Photos:

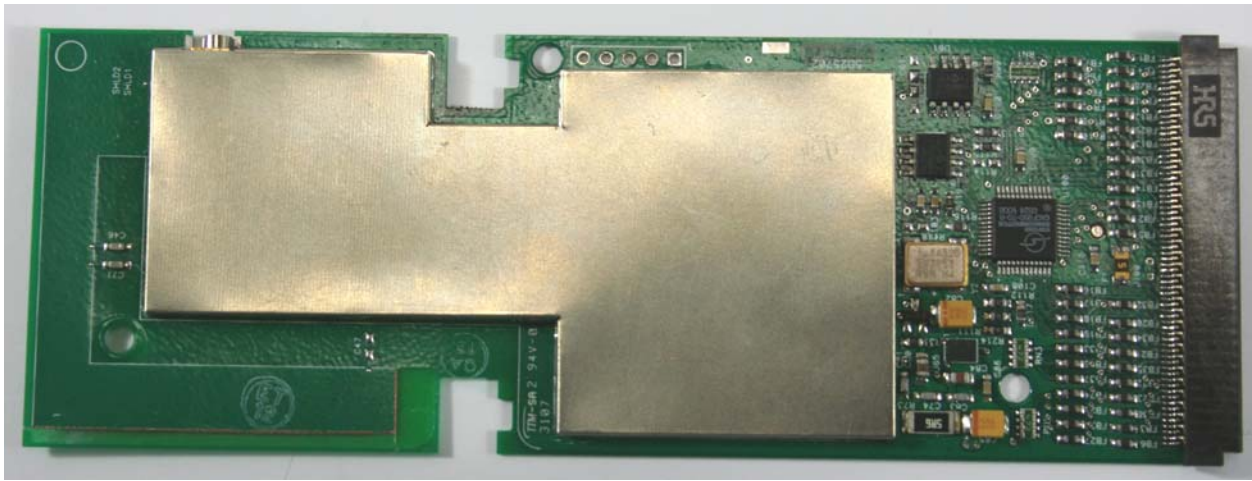
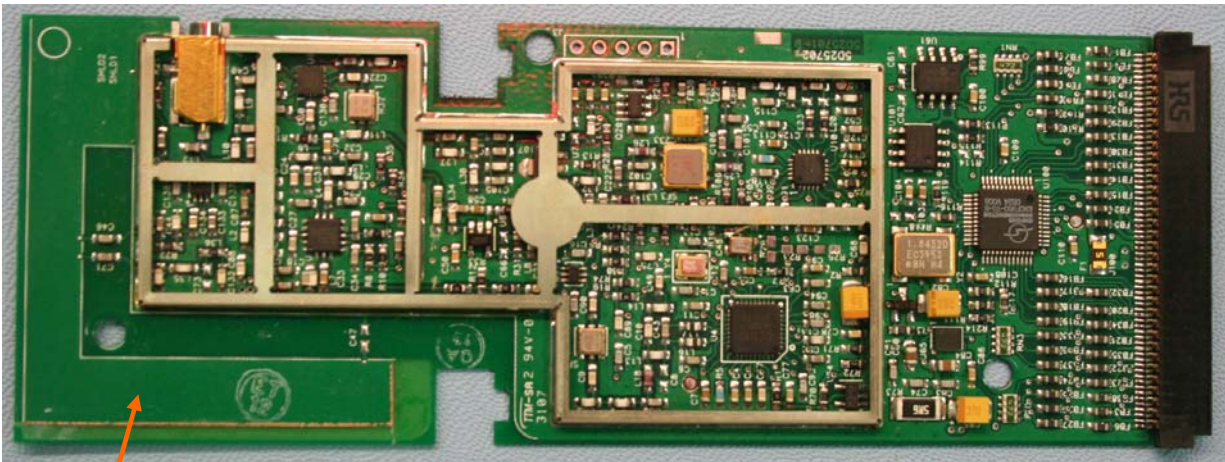


Figure 1: Top View of PCB with Shield.



Antenna

Figure 2: Top View of PCB.

Note: the PCB antenna is bypassed, and a coax is soldered to the RF output directly to and inverted – SMA antenna connector.



Figure 3: the PCMCIA assembly – exploded view.



Figure 4: Top of assembly with label.