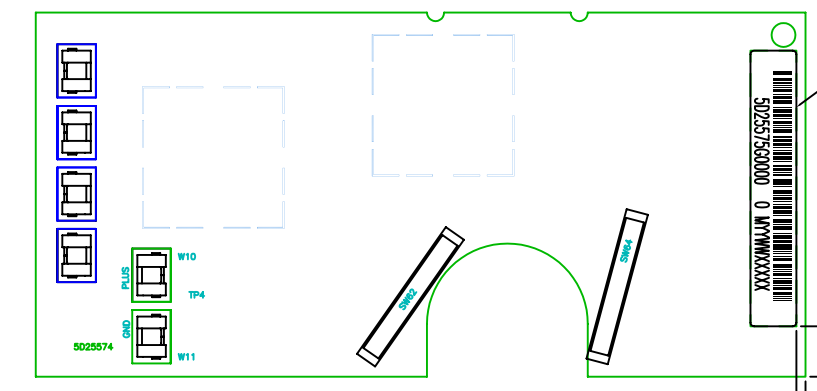


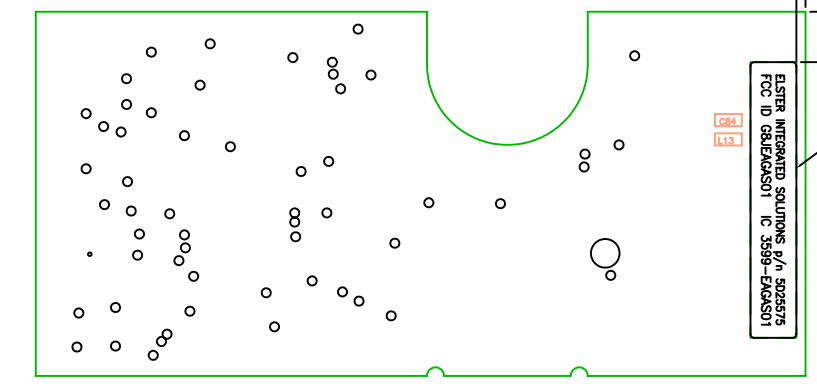
| REVISIONS | | |
|-----------|---------------------------------|----------|
| REV | COMMENTS | DATE |
| A | EP 6 PRELIMINARY | 10-16-07 |
| B | EP 7 PRELIMINARY ECN 1173 | 10-24-07 |
| 0 | RELEASE FOR PRODUCTION ECN 1181 | 11-16-07 |
| 01 | ADD FCC ID LABEL PER ECN 1185 | 12-05-07 |

LABEL PLACEMENT



4075B04H16
S/N LABEL
MARK PER DWG 1B12181H01

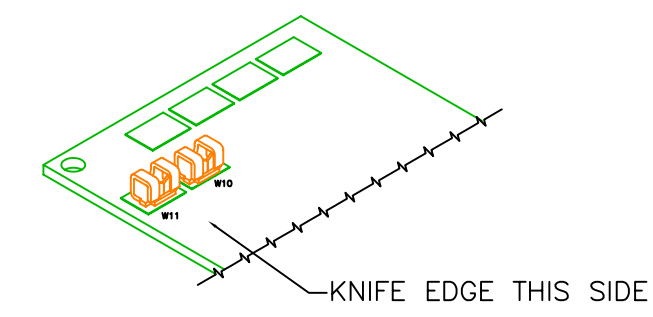
COMPONENT SIDE



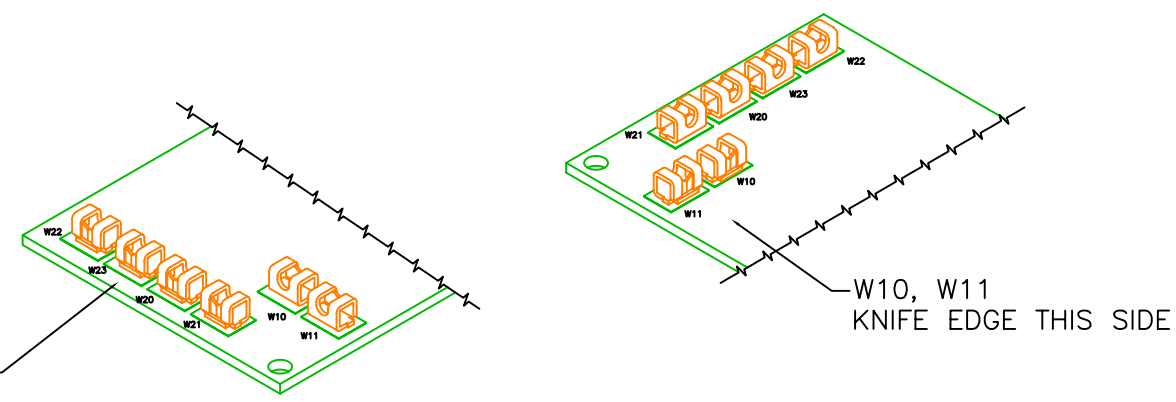
4075B04H16
FCC ID LABEL
MARK PER DWG 7S1050H001

SOLDER SIDE

IDC ORIENTATION
5D25575 G01 Residential

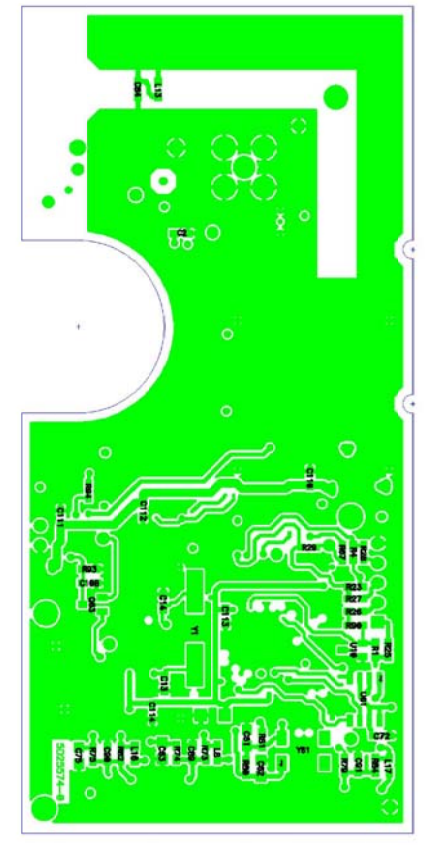


IDC ORIENTATION
5D25575 G02 Standalone



W20, W21, W22, W23
KNIFE EDGE THIS SIDE

3-A1222222
EA GAS MODULE
SOLDER SIDE
15-OCT-07



5D25574-E
EA GAS MODULE
ELSTER INTEGRATED SOLUTIONS
201 S ROGERS LANE
RALEIGH, N.C. 27610
15-OCT-07
COMPONENT SIDE

| | | |
|---|--|--|
| OLD DWG # | INTERPRET PER ANSI Y14.5 & STD FE-1000 | ELSTER INTEGRATED SOLUTIONS 201 S ROGERS LANE RALEIGH, NC 27610 TEL: 919 250-5700 FAX: 919 250-5409 |
| TOLERANCES-UNLESS OTHERWISE SPECIFIED | DIMENSIONS IN MILLIMETERS X.X .02" X.XX .005" X.XXX .008" | |
| SURFACES ✓ min | | TITLE: PCBA, EA GAS MODULE PROJECT: EA GAS PARTS PLACEMENT DRFT: ST 09-28-07 DRAWING NUMBER ENGR: SB 11-15-07 5D25575 CHK: |
| <small>THIS DOCUMENT IS THE PROPERTY OF ELSTER INTEGRATED SOLUTIONS AND ITS SUBSTANCE IS CONFIDENTIAL AND PROPRIETARY. THE CONTENTS HEREOF SHALL NOT BE PUBLISHED OR DISCLOSED TO OUTSIDE PARTIES OR USED FOR THEIR BENEFIT WITHOUT THE WRITTEN AUTHORIZATION OF ELSTER INTEGRATED SOLUTIONS.</small> | | SCALE: NTS SHEET: 1 OF 1 |